

Mc MAHON INDUSTRIAL PARK No. 2

PLAT No. 1

LOT 2 OF BLOCK 9 IN

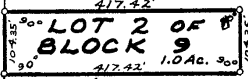
NW 1/4 OF SE 1/4 OF SEC. 24, T. 2N, R. 7E., B.H.M.

PENNINGTON COUNTY

SOUTH DAKOTA

APRIL 1967

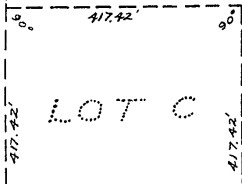
SCALE 1" = 200'



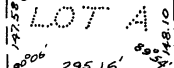
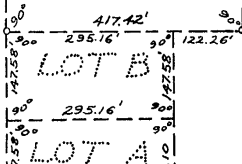
NW 1/4 OF SE 1/4

1/4 SECTION LINE

1/4 SECTION LINE  
E OF COUNTY ROAD



SW 1/4 OF SE 1/4



SECTION LINE SEC. 24  
COUNTY ROAD SEC. 25

SOUTH 1/4 SEC.  
COR. OF SEC. 24

NW 1/4 OF NE 1/4  
SEC. 25-2N-7E

1  
2  
3  
4  
5  
6  
7  
8  
9  
10  
11  
12  
13  
14  
15  
16  
17  
18  
19  
20  
21  
22  
23  
24  
25  
26  
27  
28  
29  
30  
31  
32  
33  
34  
35  
36  
37  
38  
39  
40  
41  
42  
43  
44  
45  
46  
47  
48  
49  
50  
51  
52  
53  
54  
55  
56  
57  
58  
59  
60  
61  
62  
63  
64  
65  
66  
67  
68  
69  
70  
71  
72  
73  
74  
75  
76  
77  
78  
79  
80  
81  
82  
83  
84  
85  
86  
87  
88  
89  
90  
91  
92  
93  
94  
95  
96  
97  
98  
99  
100

BLIC,  
THE  
ED  
HE

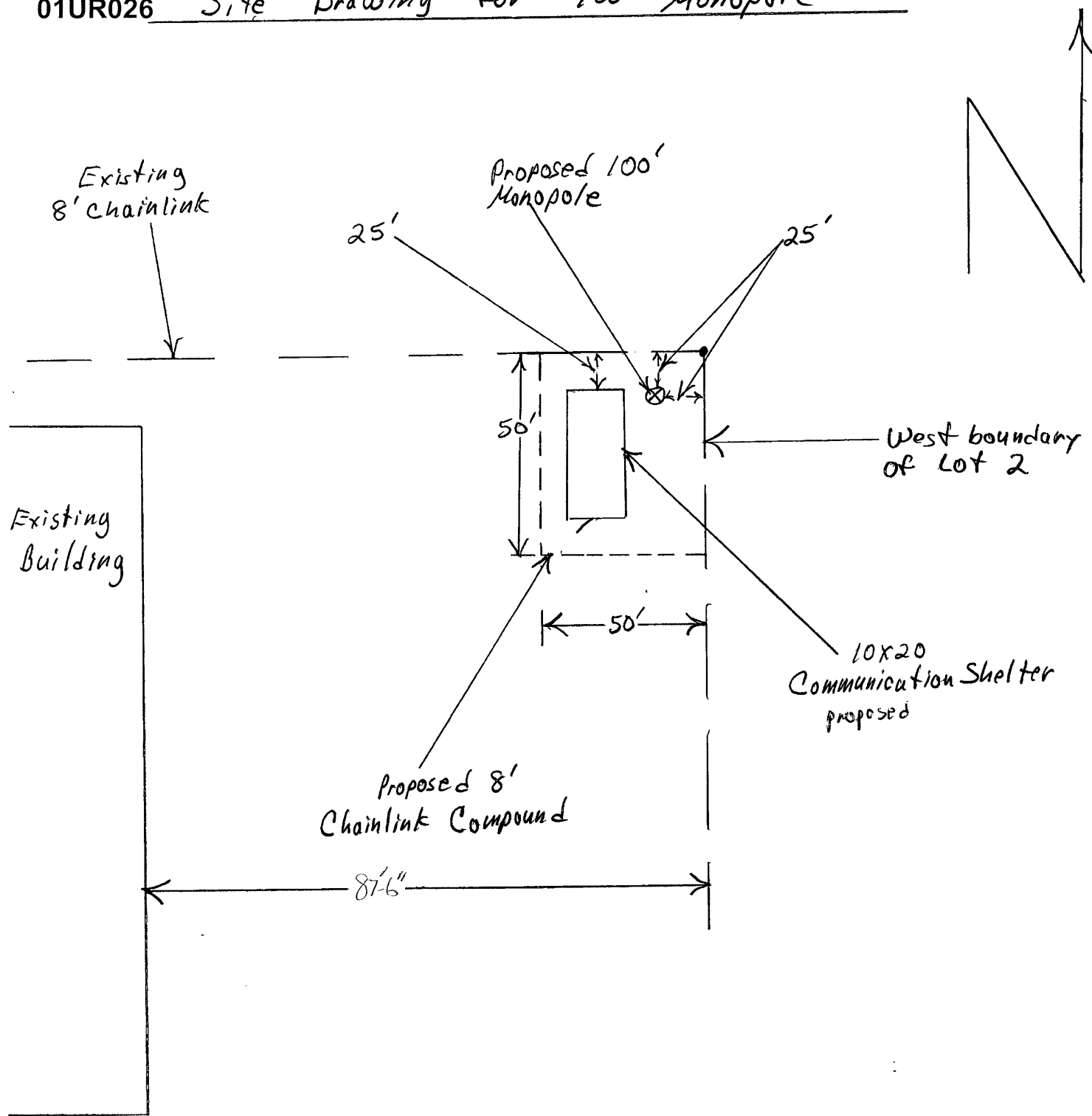
2  
EY  
ED

10,  
1E

173

NESS  
67

01UR026 Site Drawing for 100' Monopole



Drawn by M+K Consulting

\* Not to Scale