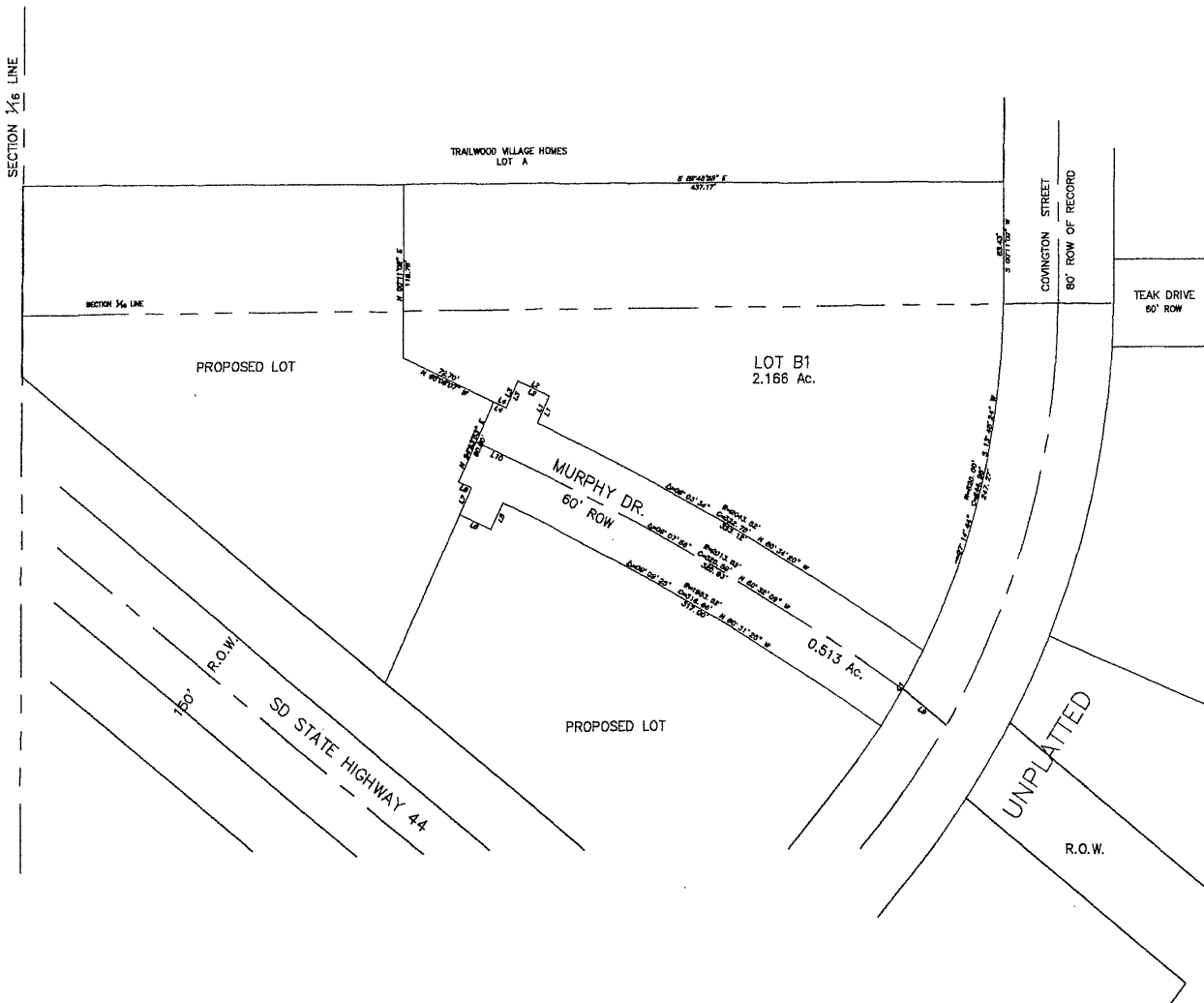


01PL032

PLAT OF LOT B1 OF TRAILWOOD VILLAGE

(FORMERLY A PORTION OF TRACT T OF TRAILWOOD VILLAGE)
LOCATED IN THE E 1/2 OF THE SW 1/4 OF SECTION 10, T1N, R8E, B.H.M.
PENNINGTON COUNTY, SOUTH DAKOTA



LINE	BEARING	DISTANCE
L1	N 24°53'53" E	20.00
L2	N 65°06'07" W	25.00
L3	S 24°53'53" W	20.00
L4	N 65°06'07" W	10.00
L5	S 24°53'53" W	20.00
L6	N 65°06'07" W	25.00
L7	N 24°53'53" E	20.00
L8	N 65°06'07" W	10.00
L9	N 51°26'30" W	40.35
L10	N 65°06'07" W	35.00

CURVE	ARC	DELTA	RADIUS	CHORD LENGTH	CHORD BEARING
C1	60.13	06°37'32"	520.00	60.10	S 30°44'32" W

APRIL 27, 2001