

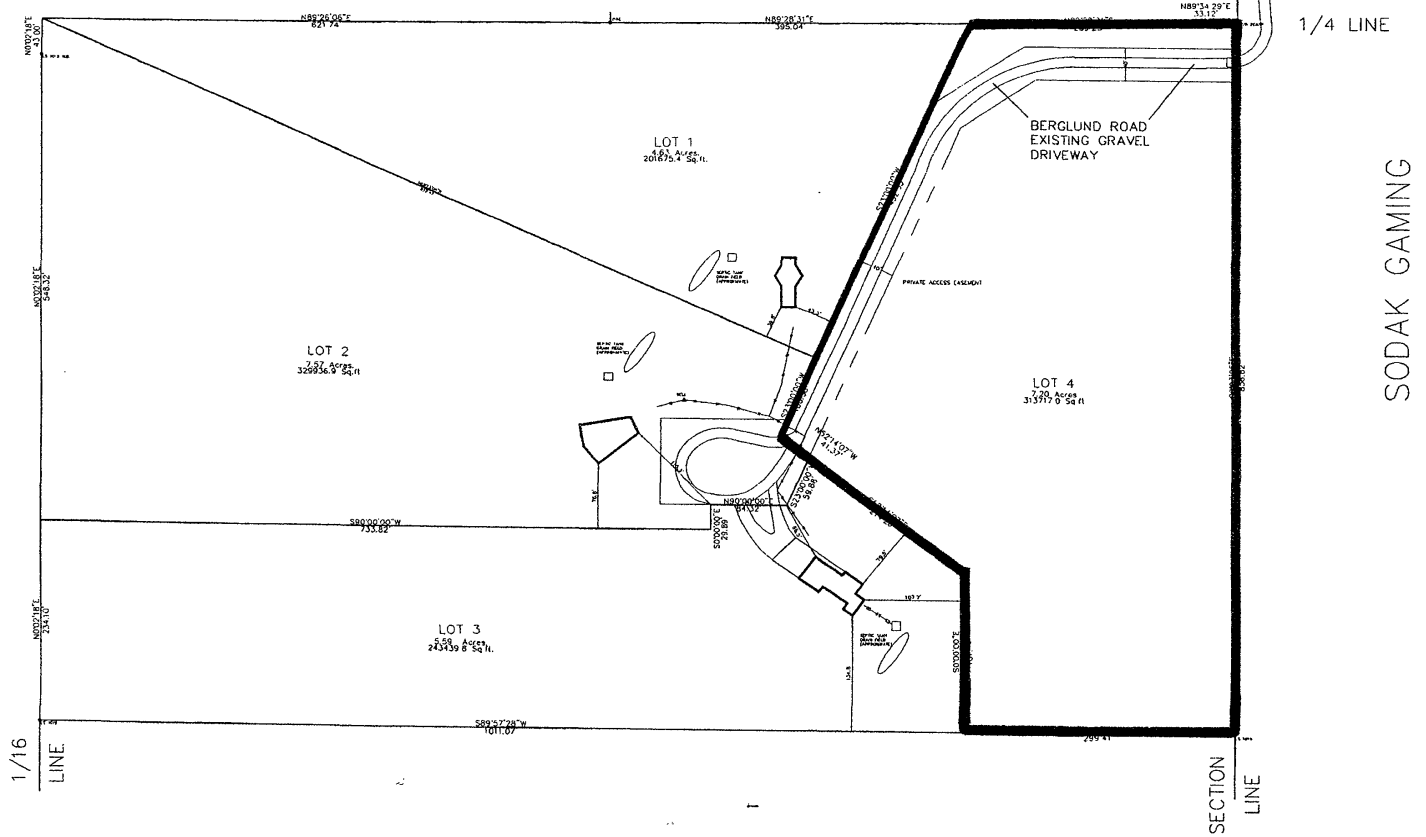
01PL047



1" = 60'
(UNRECORDED)



TRACT 1
KOVARIK SUBDIVISION



LAYOUT PLAT OF LOTS 1-4 OF SQUIRRELLY ACRES LOCATED IN NE1/4 SE 1/4 OF SECTION 22 T1N, R7E, BHM RAPID CITY, PENNINGTON COUNTY, SOUTH DAKOTA	CHECKED BY: WF DRAWN BY: BF	DATE: 5/21/07 FISK LAND SURVEYING AND CONSULTING ENGINEERS, INC.	PROJECT NO. 00-12-02 1030 MAIN STREET, P.O. BOX 3154 RAPID CITY, SOUTH DAKOTA 57109 (605) 346-1538 FAX (605) 341-1112
	REVISIONS:	CHECKED BY: WF	DATE: 5/21/07