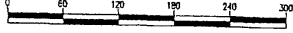


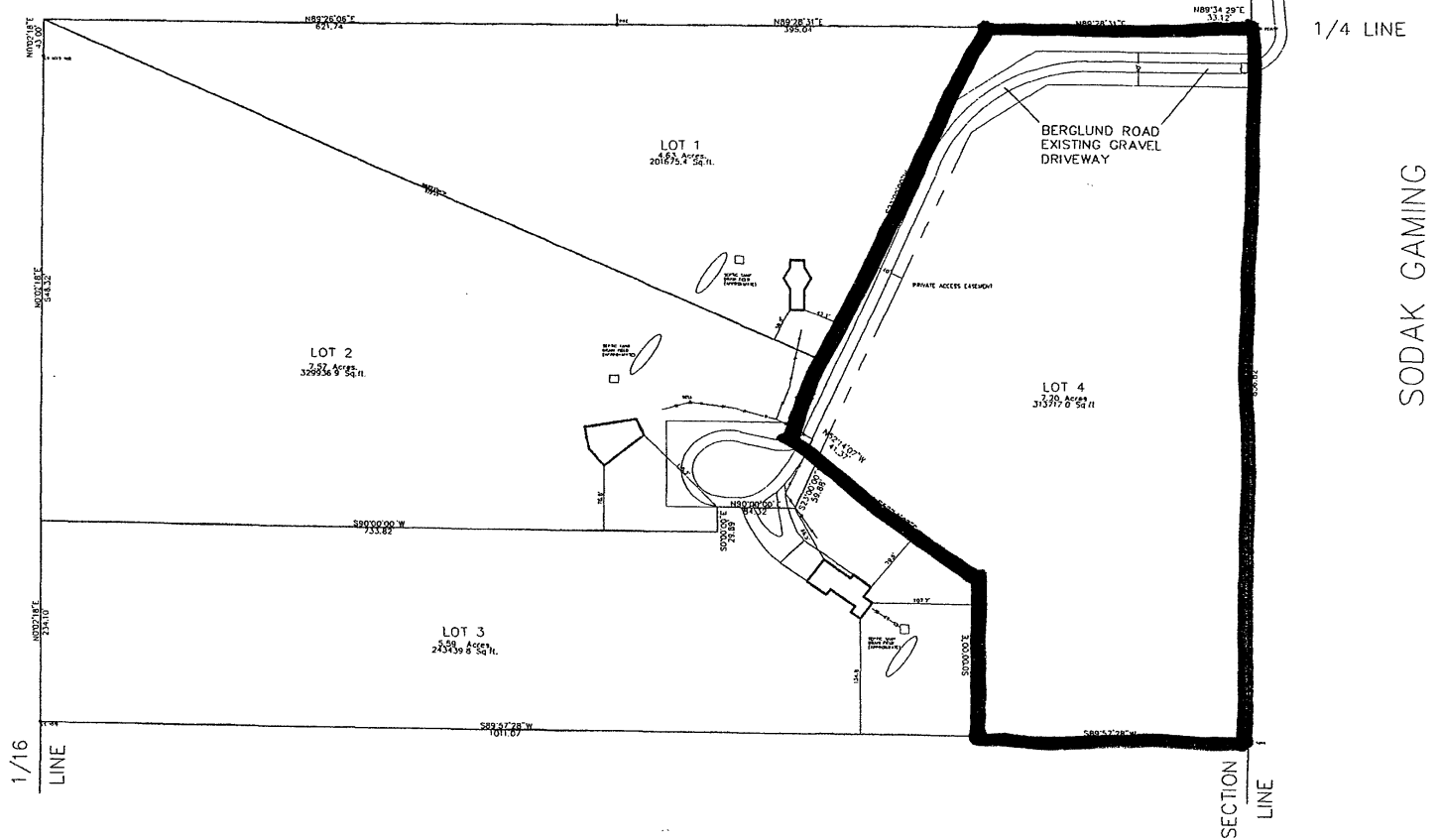


1" = 60'

(AS REDUCED)



TRACT 1  
KOVARIK SUBDIVISION



LAYOUT PLAT OF LOTS 1-4 OF SQUIRRELLY ACRES  
 LOCATED IN NE 1/4 SE 1/4 OF SECTION 22 T1N, R7E, BHM  
 RAPID CITY, PENNINGTON COUNTY, SOUTH DAKOTA

PREPARED BY: BF  
 DRAWN BY: BF

REVISIONS  
 DATE: 5/10/01 CHECKED BY: WF

PROJECT NO: 00-12-02  
 1030 MAIN STREET, P.O. BOX 2151  
 RAPID CITY, SOUTH DAKOTA 57709  
 (605) 342-1538 FAX (605) 341-1112

FSK LAND SURVEYING  
 AND CONSULTING ENGINEERS, INC.