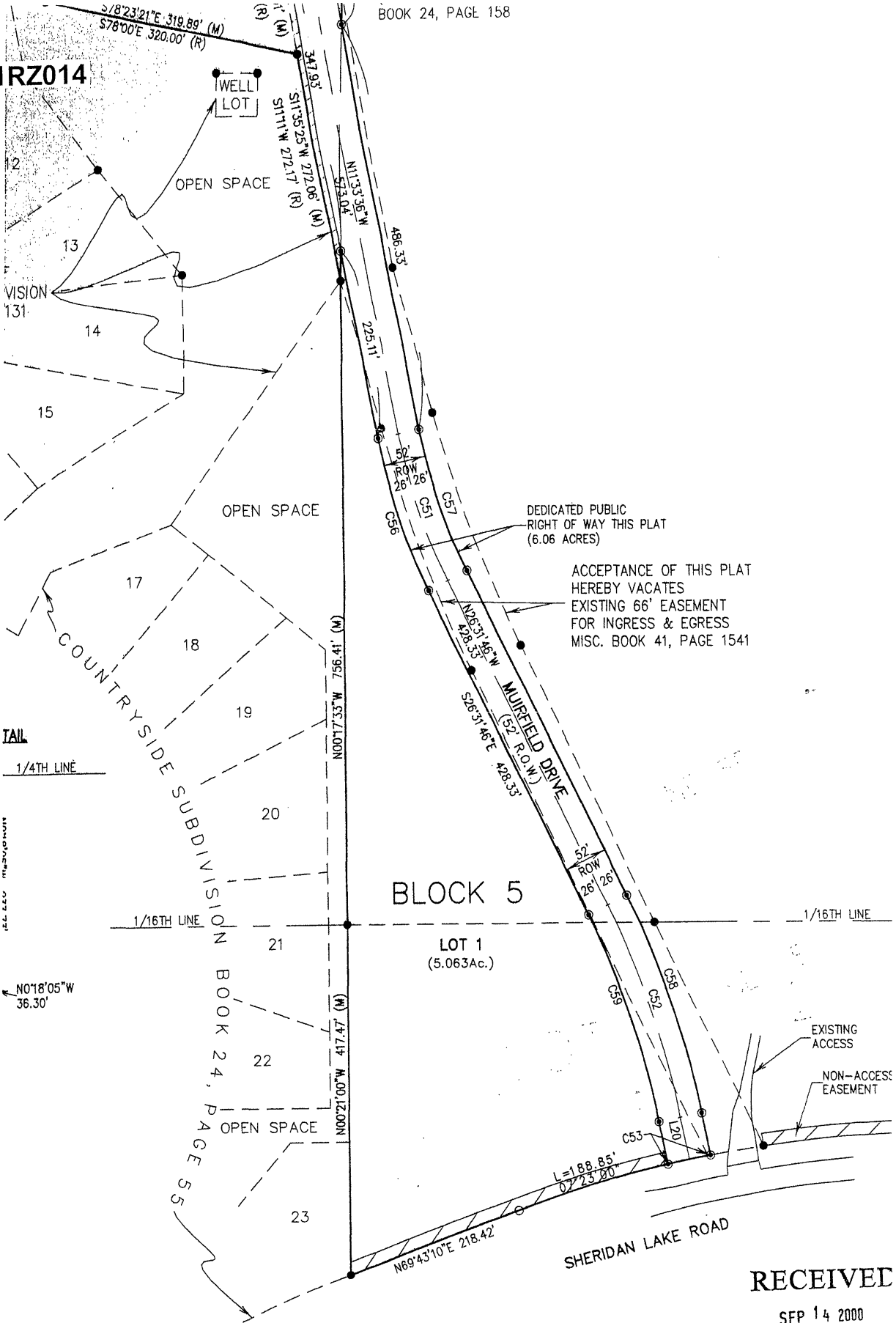


01RZ014



DEDICATED PUBLIC RIGHT OF WAY THIS PLAT (6.06 ACRES)

ACCEPTANCE OF THIS PLAT HEREBY VACATES EXISTING 66' EASEMENT FOR INGRESS & EGRESS MISC. BOOK 41, PAGE 1541

BLOCK 5

LOT 1 (5.063Ac.)

RECEIVED

SEP 14 2000
Rapid City
Planning Department