

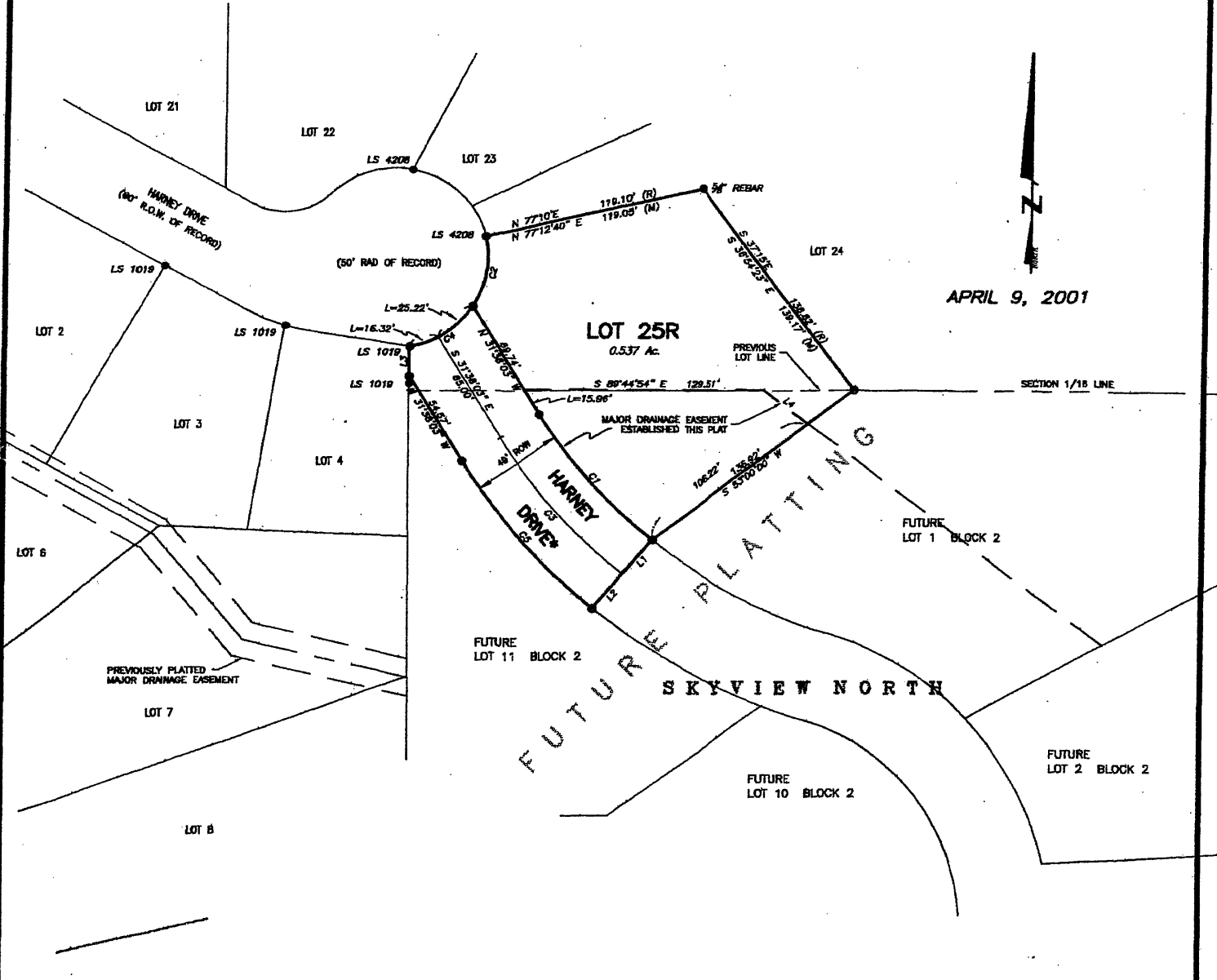
01PL027

PLAT OF  
**LOT 25R-1 OF BLOCK 1  
MINNEWASTA SUBDIVISION**

(FORMERLY LOT 25R OF BLOCK 1 OF MINNEWASTA SUBDIVISION)

LOCATED IN THE NE1 OF THE SE1 OF SECTION 10, T1N, R7E, BHM  
RAPID CITY, PENNINGTON COUNTY, SOUTH DAKOTA

ACCEPTANCE OF THIS PLAT HEREBY VACATES THE PLAT OF LOT 25R OF BLOCK 1 OF MINNEWASTA SUBDIVISION, AND  
THE AREA DEDICATED AS RIGHT OF WAY, AS SHOWN IN PLAT BOOK 30 ON PAGE 8 IN THE OFFICE OF THE  
PENNINGTON COUNTY REGISTER OF DEEDS



**PRELIMINARY**