

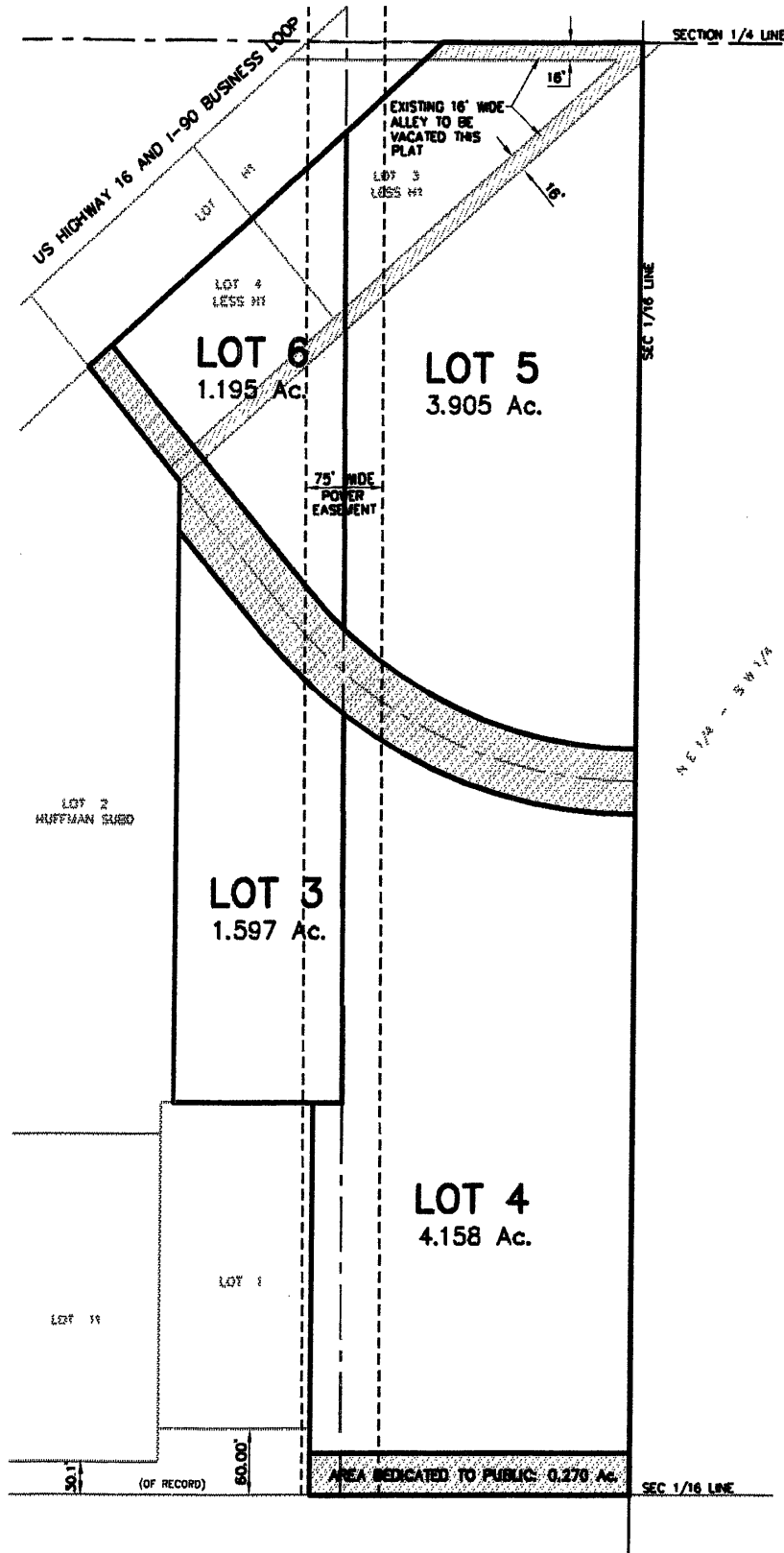
LAYOUT PLAT OF
LOTS 3, 4, 5, & 6

00PL126

OF HUFFMAN SUBDIVISION

(formerly Lots 3 & 4 of the NW1/4 of the SW1/4 of Section 32 less Lot H1 of Lots 3, 4, 5 & 6 of the NW1/4 of the SW1/4 Section 32,
and the unplatted portion of the NW1/4 of the SW1/4 of Section 32 and the existing 16' wide alley)

LOCATED IN THE NW1/4 OF THE SW1/4
SECTION 32, T2N, R8E, BHM
RAPID CITY, PENNINGTON COUNTY, SOUTH DAKOTA



DECEMBER 8, 2000
N.T.S.



Renner & Sperlich Engineering Co.

616 Sixth St. • Rapid City, SD 57701 • 605/342-1191
FAX: 605/342-1405 • E-MAIL: X19FIAT@AOL.COM