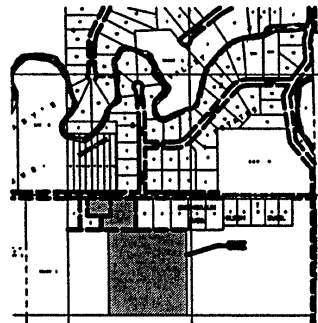
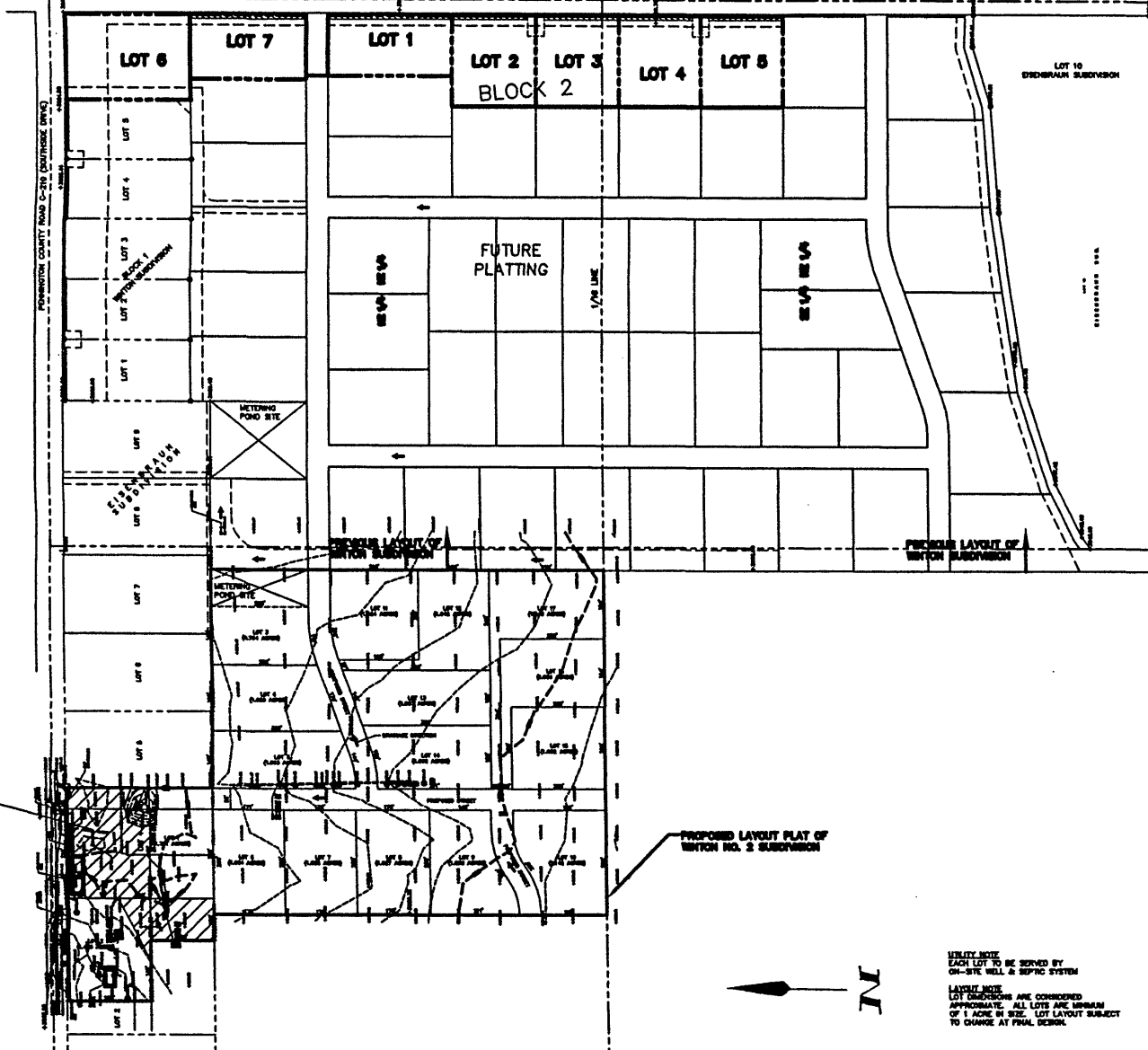
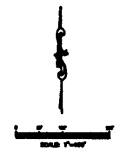


00SV022

PENNINGTON COUNTY ROAD L-210 (ANDERSON ROAD)



NEIGHBORHOOD MAP
SCALE 1" = 200'



UTILITY NOTE
EACH LOT TO BE SERVED BY
ON-SITE WELL & SEPTIC SYSTEM

LAYOUT NOTE
LOT DIMENSIONS ARE CONSIDERED
APPROXIMATE. ALL LOTS ARE MINIMUM
OF 1 ACRE IN SIZE. LOT LAYOUT SUBJECT
TO CHANGE AT FINAL DESIGN.

Prepared by	
Checked by	
Drawn by	
Date	
Scale	
Sheet No.	
Total Sheets	

PROPOSED LAYOUT PLAN
WINTON NUMBER 2 SUBDIVISION
 RAPID CITY, SOUTH DAKOTA

Revision / Date	
Sheet Number	1
Total Sheets	1



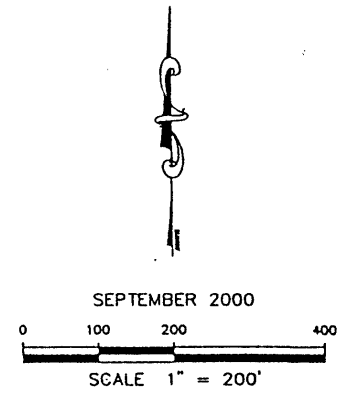
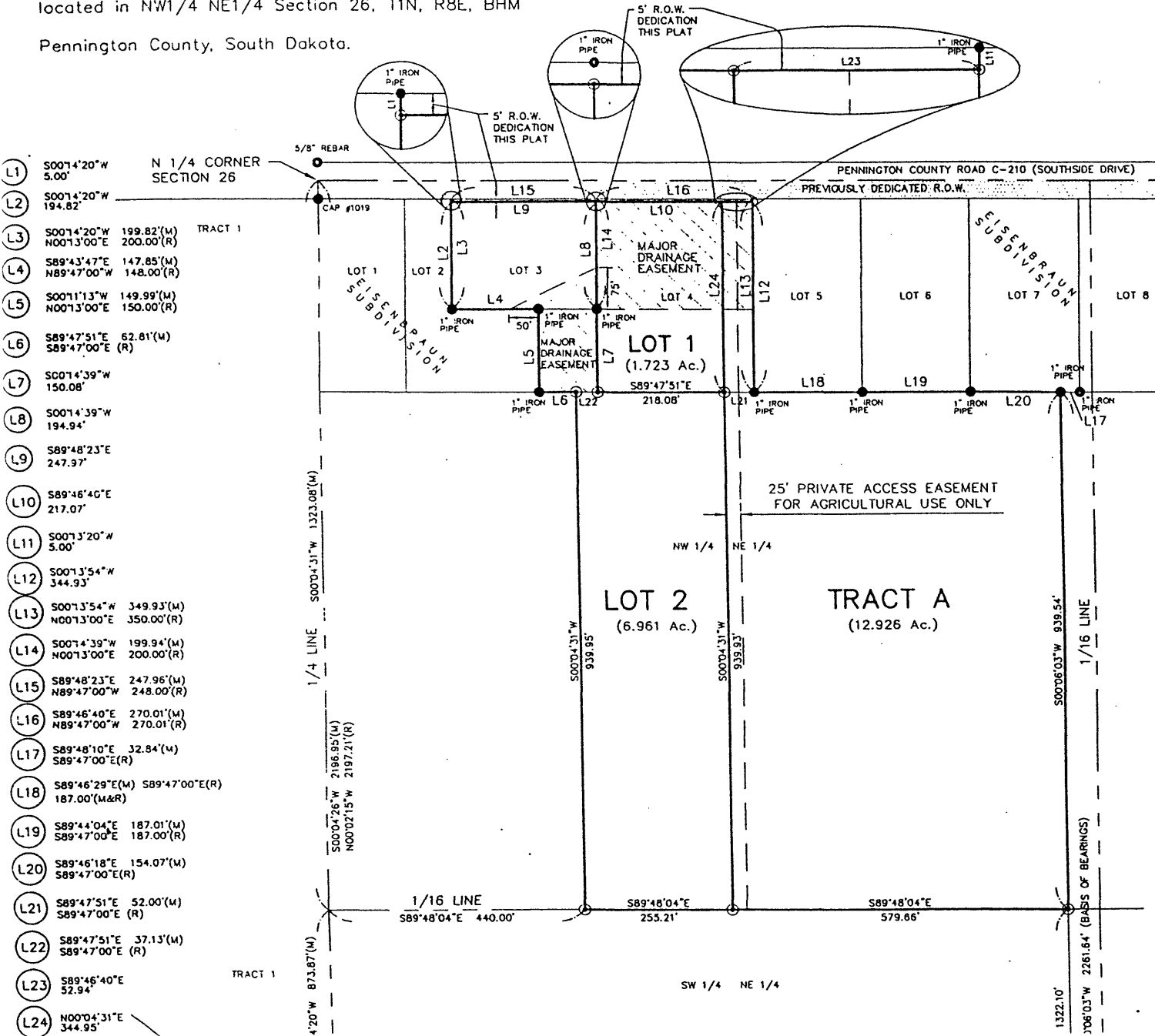
F.M.G., Inc.
 PROFESSIONAL ENGINEERS
 1000 14TH STREET, RAPID CITY, SD 57701

Plat of Lots 1, 2, and Tract A of Winton Subdivision #2 and Dedicated Right-Of-Way
Formerly Lots 3 and 4 of Eisenbraun Subdivision and Unplatted

located in NW1/4 NE1/4 Section 26, T1N, R8E, BHM

Pennington County, South Dakota.

Prepared by:
FMG Engineering
3700 Sturgis Road
Rapid City, SD 57702
605/342-4105



- L1 S00°14'20"W 5.00'
- L2 S00°14'20"W 194.82'
- L3 S00°14'20"W 199.82'(M)
N00°13'00"E 200.00'(R)
- L4 S89°43'47"E 147.85'(M)
N89°47'00"W 148.00'(R)
- L5 S00°11'13"W 149.99'(M)
N00°13'00"E 150.00'(R)
- L6 S89°47'51"E 62.81'(M)
S89°47'00"E (R)
- L7 S00°14'39"W 150.08'
- L8 S00°14'39"W 194.94'
- L9 S89°48'23"E 247.97'
- L10 S89°46'40"E 217.07'
- L11 S00°13'20"W 5.00'
- L12 S00°13'54"W 344.93'
- L13 S00°13'54"W 349.93'(M)
N00°13'00"E 350.00'(R)
- L14 S00°14'39"W 199.94'(M)
N00°13'00"E 200.00'(R)
- L15 S89°48'23"E 247.96'(M)
N89°47'00"W 248.00'(R)
- L16 S89°46'40"E 270.01'(M)
N89°47'00"W 270.01'(R)
- L17 S89°48'10"E 32.84'(M)
S89°47'00"E(R)
- L18 S89°46'29"E(M) S89°47'00"E(R)
187.00'(M&R)
- L19 S89°44'04"E 187.01'(M)
S89°47'00"E 187.00'(R)
- L20 S89°46'18"E 154.07'(M)
S89°47'00"E(R)
- L21 S89°47'51"E 52.00'(M)
S89°47'00"E (R)
- L22 S89°47'51"E 37.13'(M)
S89°47'00"E (R)
- L23 S89°46'40"E 52.94'
- L24 N00°04'31"E 344.95'