

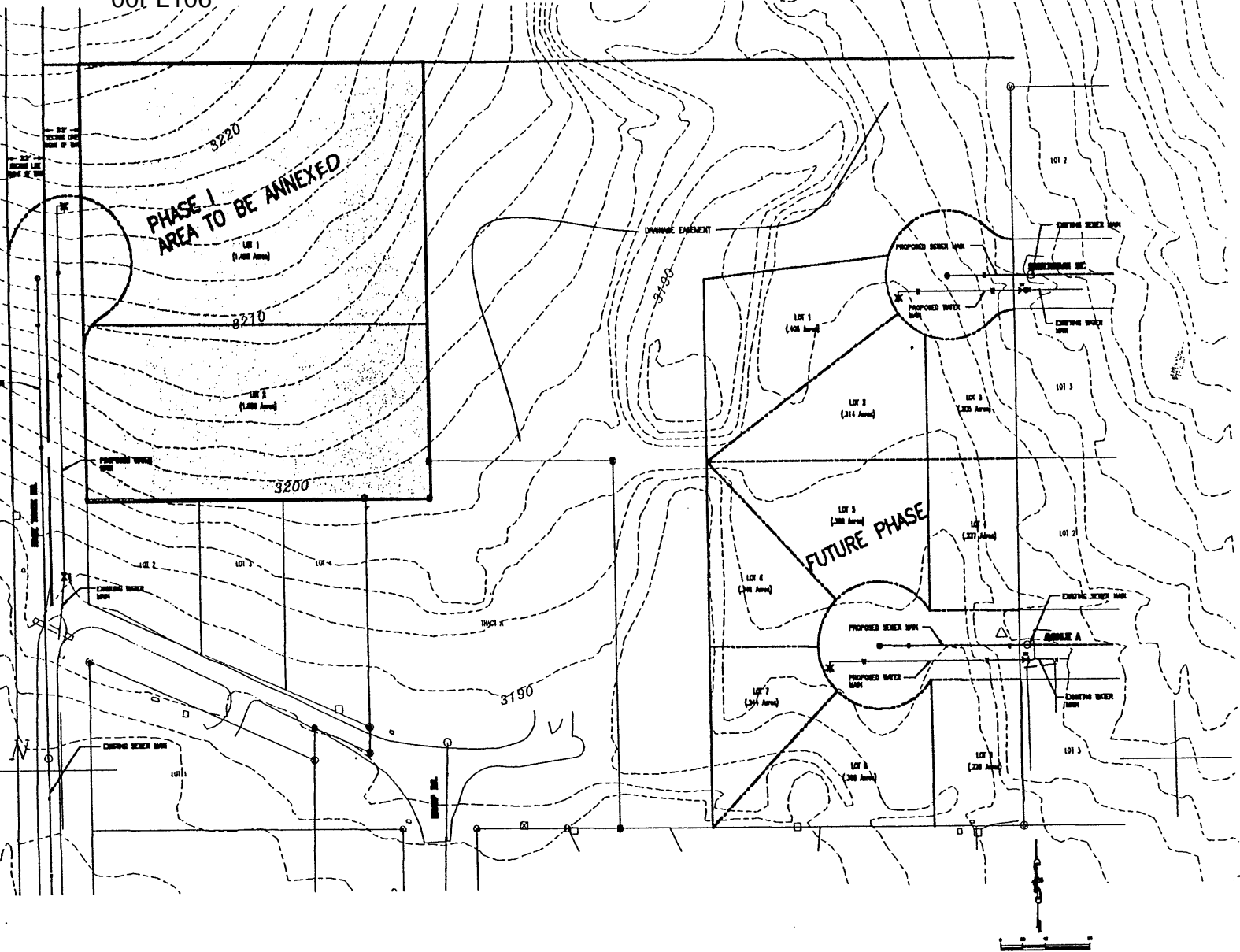
00PL106

PHASE I
AREA TO BE ANNEXED

FUTURE PHASE

16,000 N

10



D.D.I.
DEAN DESIGN INTERNATIONAL, INC.
 PROFESSIONAL STRUCTURAL & CIVIL ENGINEERING CONSULTANTS
 100 SOUTH 14TH STREET, SUITE 101, RAPID CITY, SD 57701
 P.O. BOX 1001, RAPID CITY, SD 57701
 TEL: 605.342.1001 FAX: 605.342.1002

PROJECT #	00PL106
DATE	10/10/10
DESIGNER	DAVID M. DEAN
CHECKED	DAVID M. DEAN
DATE	10/10/10
SCALE	AS SHOWN

OPTION "B"
PRELIMINARY LAYOUT
NEFF SUBDIVISION
RAPID CITY, SD

SHEET
 1
 OF
 1