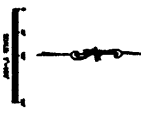
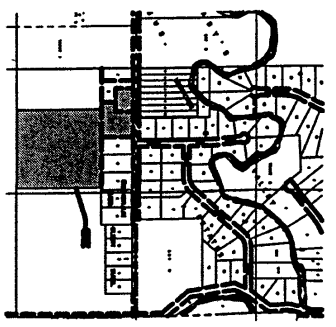


PROPOSED LAYOUT PLAT OF WINTON NO. 2 SUBDIVISION

THESE LOTS ARE SUBJECT TO THE WINTON NO. 2 SUBDIVISION. THE LOTS ARE NOT TO BE CONSIDERED AS A TRACT IN WHOLE OR IN PART. THE LOTS ARE SUBJECT TO CHANGE AT FINAL CLOSURE.



PROPOSED LAYOUT PLAT
WINTON NUMBER 2 SUBDIVISION
 RAPID CITY, SOUTH DAKOTA

F M G, Inc.
 5758 Georgia Road
 Rapid City, SD 57705-0917
 (605) 348-4100 FAX (605) 348-4883

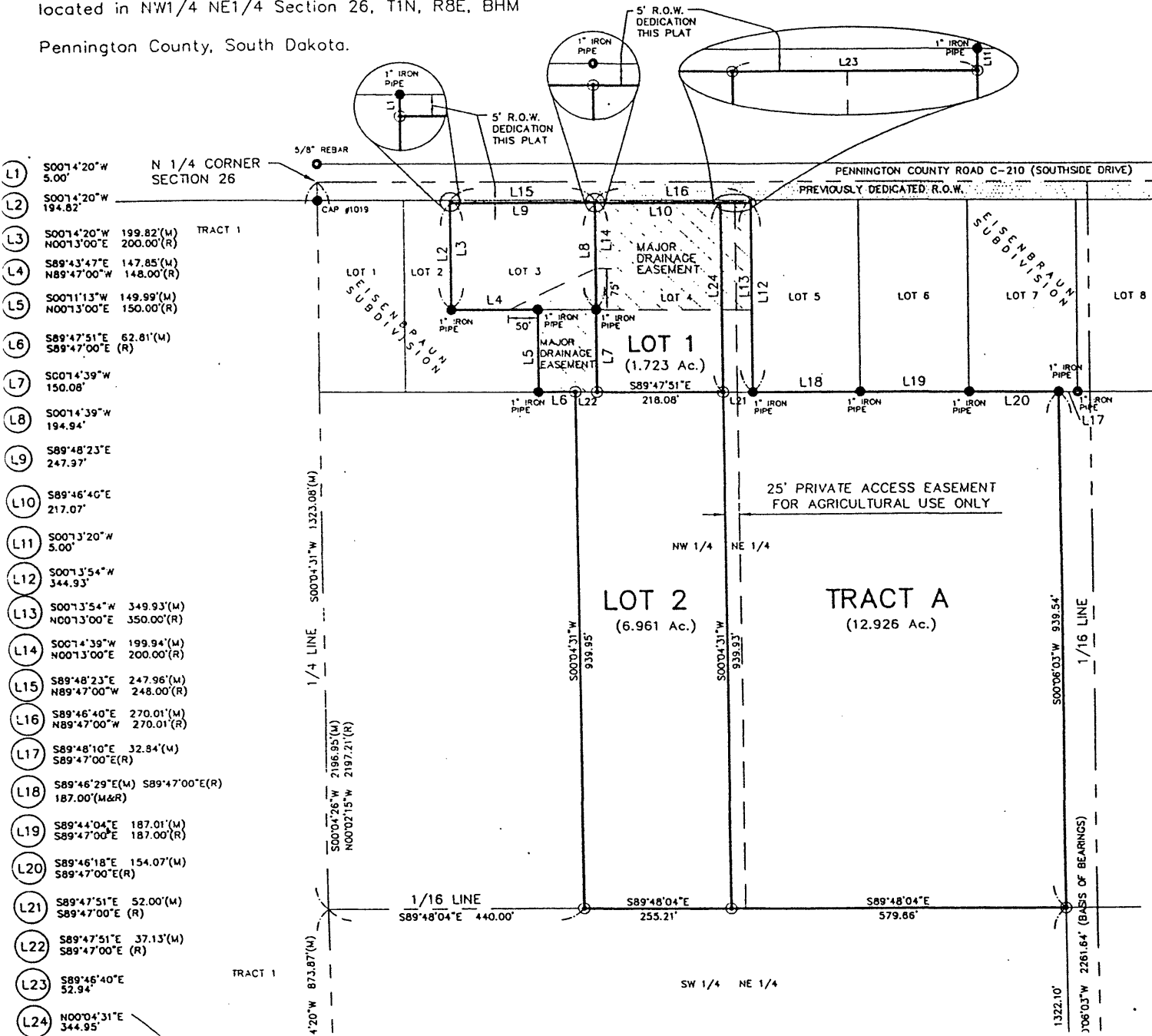
Scale	1" = 100'
North Arrow	As Shown
Lot Area	As Shown
Area / Acre	As Shown
Sheet Number	1
Total Sheets	1

Plat of Lots 1, 2, and Tract A of Winton Subdivision #2 and Dedicated Right-Of-Way
Formerly Lots 3 and 4 of Eisenbraun Subdivision and Unplatted

located in NW1/4 NE1/4 Section 26, T1N, R8E, BHM

Pennington County, South Dakota.

Prepared by:
FMG Engineering
3700 Sturgis Road
Rapid City, SD 57702
605/342-4105



- (L1) S0074°20'W 5.00'
- (L2) S0074°20'W 194.82'
- (L3) S0074°20'W 199.82'(M)
N0071°3'00"E 200.00'(R)
- (L4) S89°43'47"E 147.85'(M)
N89°47'00"W 148.00'(R)
- (L5) S0071°13'W 149.99'(M)
N0071°3'00"E 150.00'(R)
- (L6) S89°47'51"E 62.81'(M)
S89°47'00"E (R)
- (L7) S0074°39'W 150.08'
- (L8) S0074°39'W 194.94'
- (L9) S89°48'23"E 247.97'
- (L10) S89°46'40"E 217.07'
- (L11) S0073°20'W 5.00'
- (L12) S0073°54'W 344.93'
- (L13) S0073°54'W 349.93'(M)
N0071°3'00"E 350.00'(R)
- (L14) S0074°39'W 199.94'(M)
N0071°3'00"E 200.00'(R)
- (L15) S89°48'23"E 247.96'(M)
N89°47'00"W 248.00'(R)
- (L16) S89°46'40"E 270.01'(M)
N89°47'00"W 270.01'(R)
- (L17) S89°48'10"E 32.84'(M)
S89°47'00"E(R)
- (L18) S89°46'29"E(M) S89°47'00"E(R)
187.00'(M&R)
- (L19) S89°44'04"E 187.01'(M)
S89°47'00"E 187.00'(R)
- (L20) S89°46'18"E 154.07'(M)
S89°47'00"E(R)
- (L21) S89°47'51"E 52.00'(M)
S89°47'00"E (R)
- (L22) S89°47'51"E 37.13'(M)
S89°47'00"E (R)
- (L23) S89°46'40"E 52.94'
- (L24) N0070°4'31"E 344.95'

