



View looking into site



Sixth street



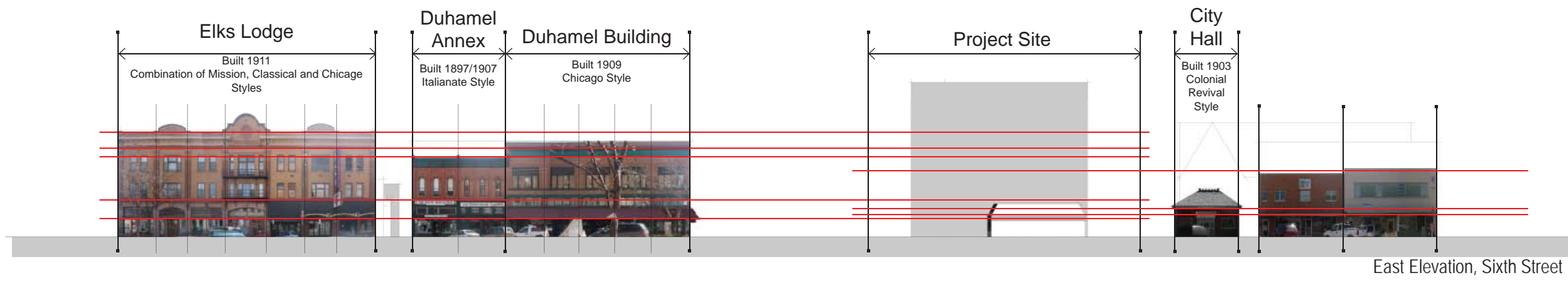
Sixth street

ST. Joseph Street



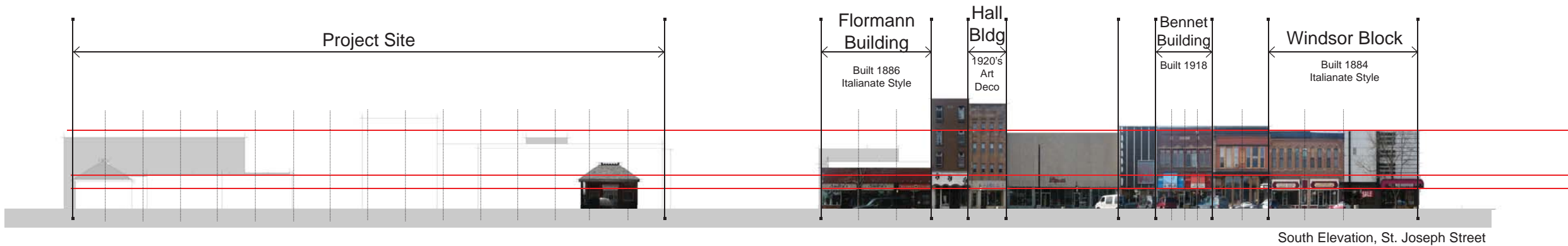
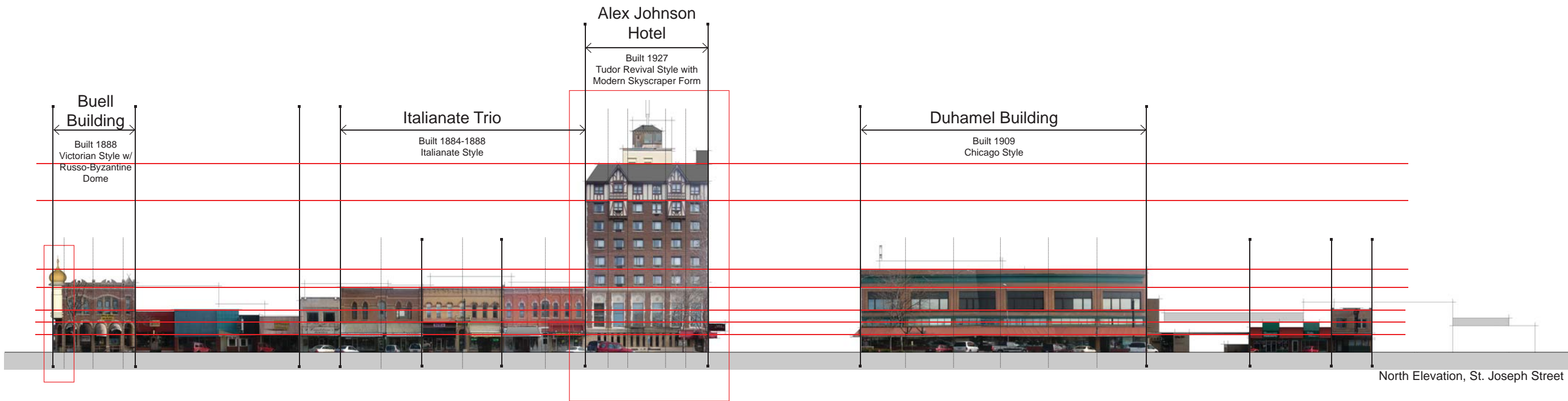
Sixth street

View looking from site



Downtown architecture exhibits a variety of architectural styles and expressions. Each of these buildings by their style represent the era they were built in.

Downtown Rapid city thus has always been represented by an architecture that is - of its time and of its place

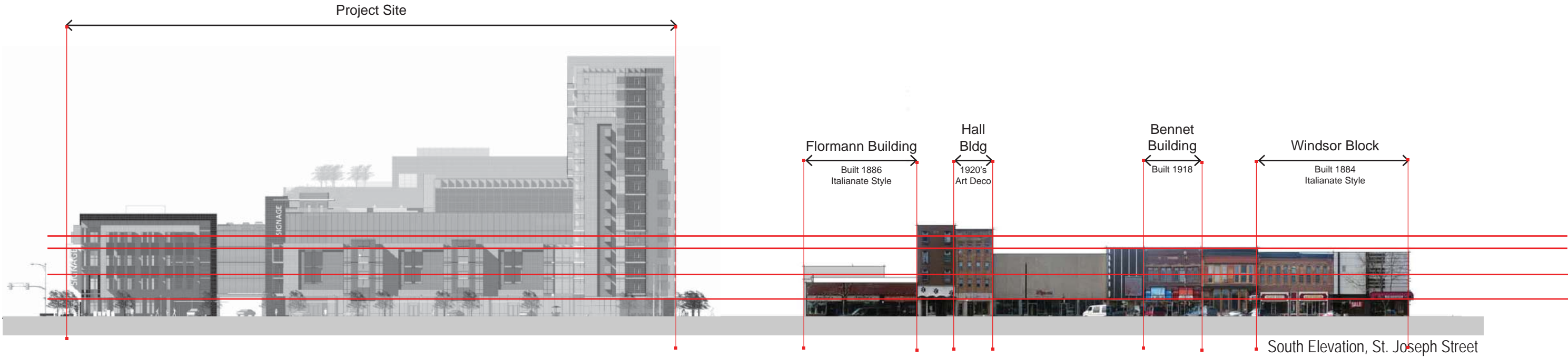


Existing elevations



Continuous uniform building Heights  
Continuous retail canopy line  
Continuous cornice line

The proposed massing builds upon the existing building lines that exist in downtown further reinforcing the character of the Historic District



President's Plaza



KEYNOTE LEGEND	
KEYNOTE	DESCRIPTION
100	BUILDING EXPANSION JOINT
101	STAINLESS STEEL CABLE
102	PROPERTY LINE
103	GATE
104	LINE ABOVE
105	NOT IN CONTRACT (TYP)
106	TRASH CHUTE
107	RECYCLING CHUTE
200	BRICK #1: MODULAR VENEER STACK BOND
201	BRICK #2: MODULAR VENEER STACK BOND
202	BRICK #3: MODULAR VENEER STACK BOND
203	STAINLESS STEEL METAL FABRIC ON 4X4 TUBE STEEL FRAMING 5FT O.C. MAX.

KEYNOTE LEGEND	
KEYNOTE	DESCRIPTION
204	METAL INFILL PANEL IN ALUM FRAMING
205	GRANITE PANELS TO MATCH BRICK #3 COLOR
206	ALUMINUM WINDOW-WALL WITH INSULATED GLASS AND SPANDREL WITH OPERABLE WINDOWS
207	ALUMINUM CURTAIN-WALL WITH INSULATED GLASS AND SPANDREL
208	ALUMINUM STOREFRONT FRAME "PUNCHED" WINDOWS WITH EXTENDED MULLION COVER
209	ALUMINUM FRAMED NANAWALL
210	PAINTED STEEL TUBE RAILING (INTERIOR EGRESS STAIR)

KEYNOTE LEGEND	
KEYNOTE	DESCRIPTION
212	1/2" TEMPERED GLASS GUARDRAIL WITH STAINLESS STEEL RAIL CAP
213	METAL TRIM AT EDGE OF EXPOSED CONCRETE SLAB
214	ALUMINUM FRAMED SKYLIGHT
215	METAL CLAD CANOPY
216	CMU - STACK BOND
217	METAL COLUMN COVER
218	METAL PARAPET CAP AT BRICK VENEER WALL
219	SIGNAGE - N.I.C.
220	ALUMINUM DOOR WITH GLASS INSET



1 BUILDING ELEVATION - NORTH  
1/32" = 1'-0"

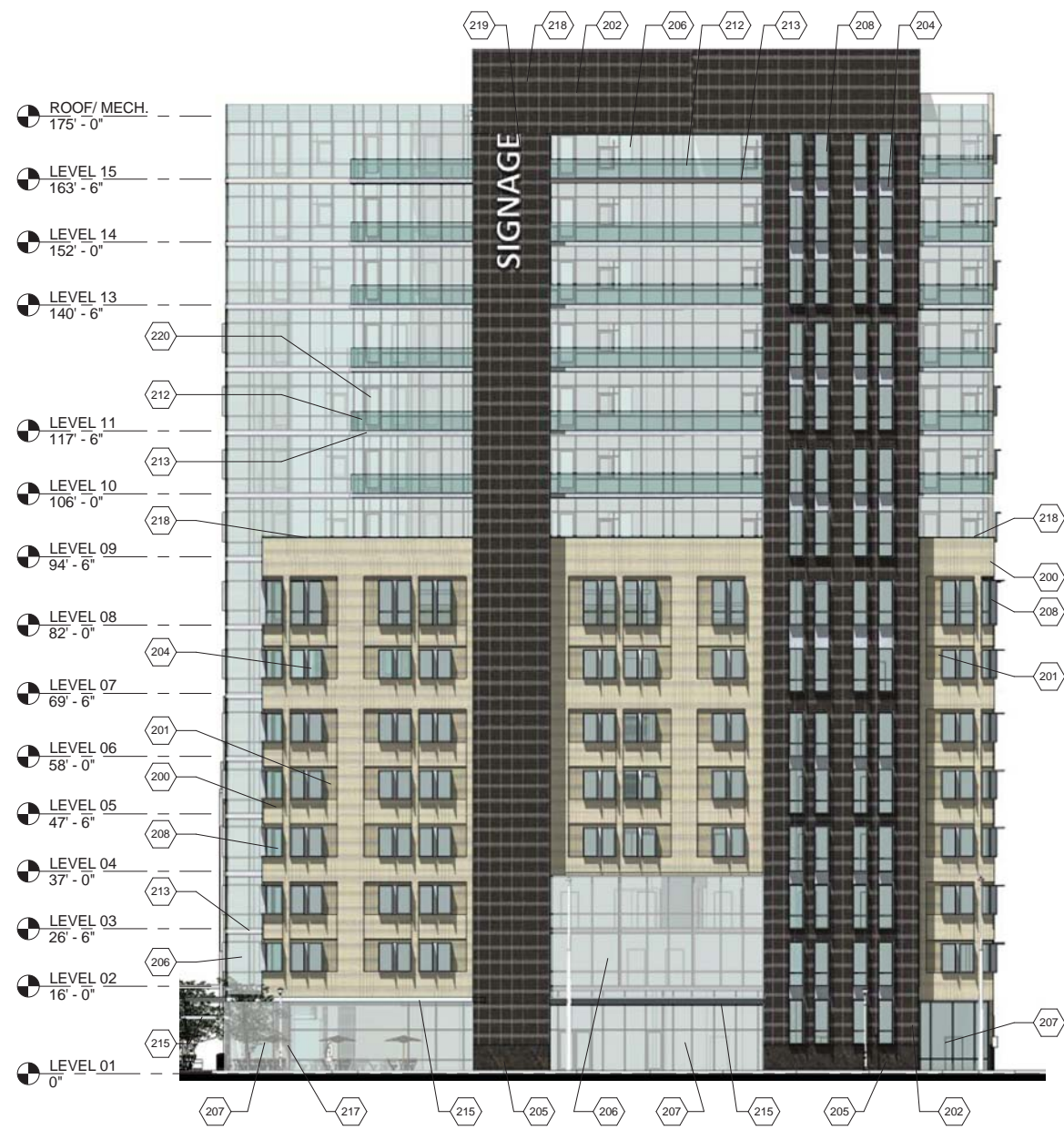
President's Plaza



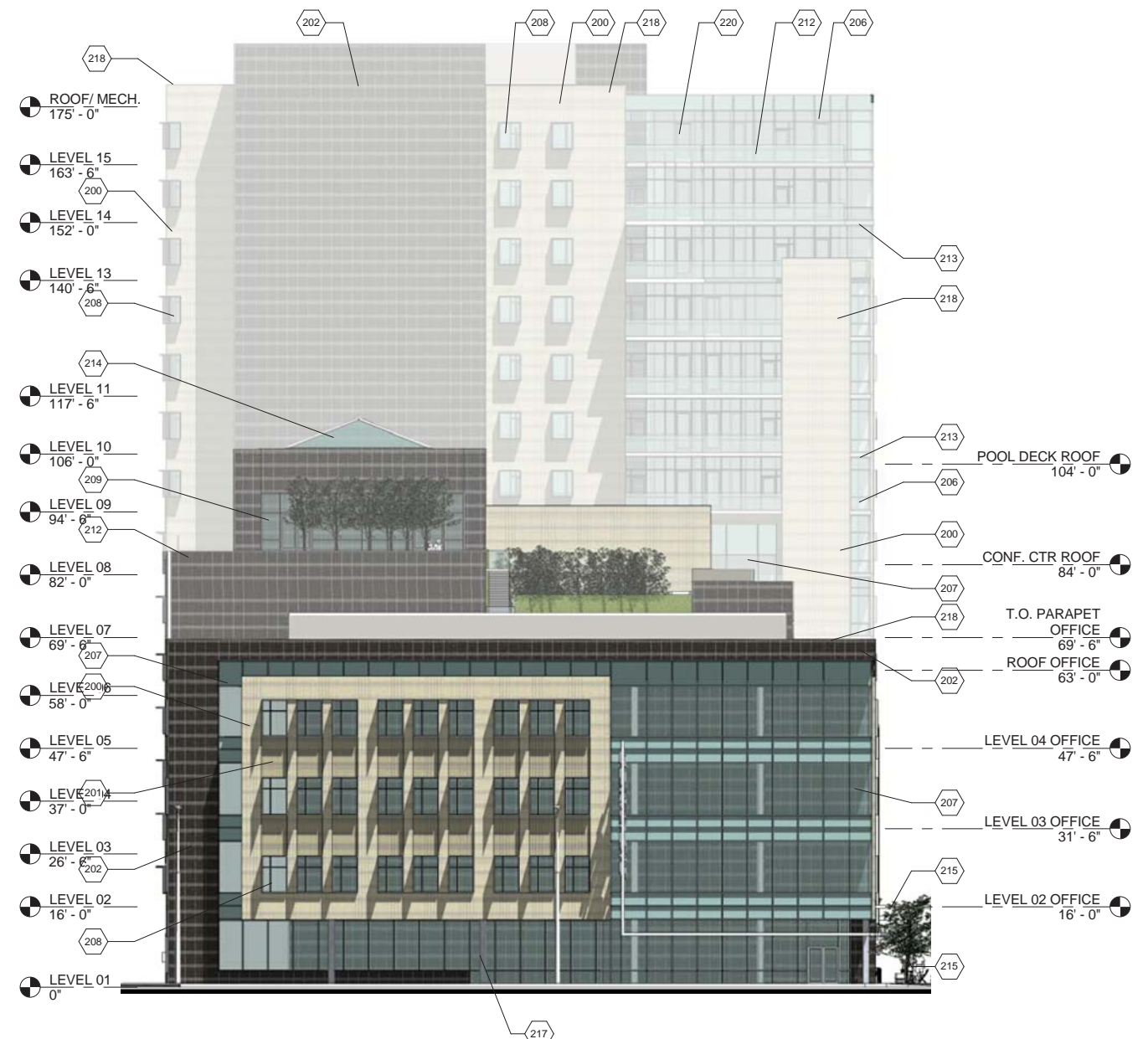
KEYNOTE LEGEND	
KEYNOTE	DESCRIPTION
100	BUILDING EXPANSION JOINT
101	STAINLESS STEEL CABLE
102	PROPERTY LINE
103	GATE
104	LINE ABOVE
105	NOT IN CONTRACT (TYP)
106	TRASH CHUTE
107	RECYCLING CHUTE
200	BRICK #1: MODULAR VENEER STACK BOND
201	BRICK #2: MODULAR VENEER STACK BOND
202	BRICK #3: MODULAR VENEER STACK BOND
203	STAINLESS STEEL METAL FABRIC ON 4X4 TUBE STEEL FRAMING 5FT O.C. MAX.

KEYNOTE LEGEND	
KEYNOTE	DESCRIPTION
204	METAL INFILL PANEL IN ALUM FRAMING
205	GRANITE PANELS TO MATCH BRICK #3 COLOR
206	ALUMINUM WINDOW-WALL WITH INSULATED GLASS AND SPANDREL WITH OPERABLE WINDOWS
207	ALUMINUM CURTAIN-WALL WITH INSULATED GLASS AND SPANDREL
208	ALUMINUM STOREFRONT FRAME "PUNCHED" WINDOWS WITH EXTENDED MULLION COVER
209	ALUMINUM FRAMED NANAWALL
210	PAINTED STEEL TUBE RAILING (INTERIOR EGRESS STAIR)

KEYNOTE LEGEND	
KEYNOTE	DESCRIPTION
212	1/2" TEMPERED GLASS GUARDRAIL WITH STAINLESS STEEL RAIL CAP
213	METAL TRIM AT EDGE OF EXPOSED CONCRETE SLAB
214	ALUMINUM FRAMED SKYLIGHT
215	METAL CLAD CANOPY
216	CMU - STACK BOND
217	METAL COLUMN COVER
218	METAL PARAPET CAP AT BRICK VENEER WALL
219	SIGNAGE - N.I.C.
220	ALUMINUM DOOR WITH GLASS INSET



2 BUILDING ELEVATION - WEST  
1/32" = 1'-0"



1 BUILDING ELEVATION - EAST  
1/32" = 1'-0"

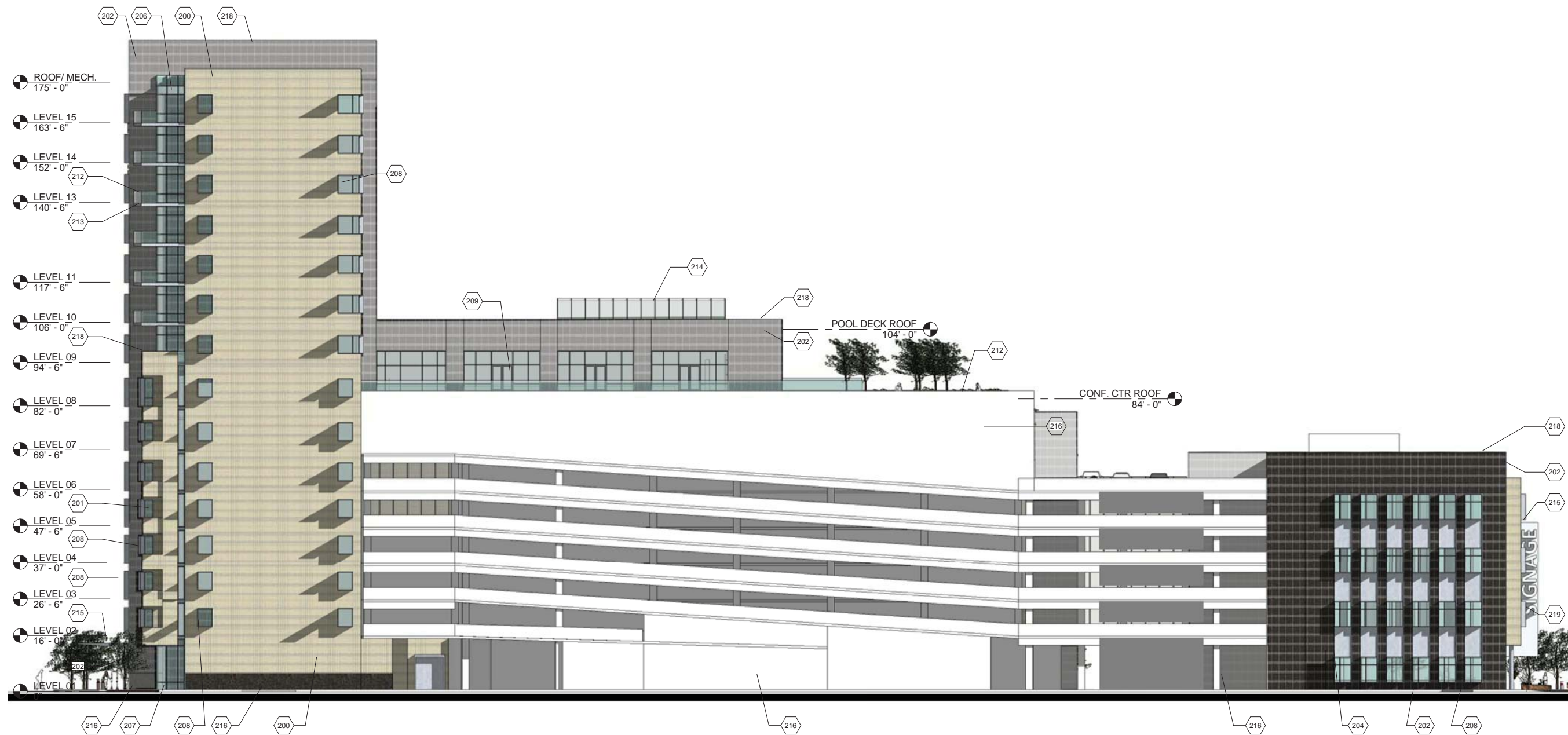
President's Plaza



KEYNOTE LEGEND	
KEYNOTE	DESCRIPTION
100	BUILDING EXPANSION JOINT
101	STAINLESS STEEL CABLE
102	PROPERTY LINE
103	GATE
104	LINE ABOVE
105	NOT IN CONTRACT (TYP)
106	TRASH CHUTE
107	RECYCLING CHUTE
200	BRICK #1: MODULAR VENEER STACK BOND
201	BRICK #2: MODULAR VENEER STACK BOND
202	BRICK #3: MODULAR VENEER STACK BOND
203	STAINLESS STEEL METAL FABRIC ON 4X4 TUBE STEEL FRAMING 5FT O.C. MAX.

KEYNOTE LEGEND	
KEYNOTE	DESCRIPTION
204	METAL INFILL PANEL IN ALUM FRAMING
205	GRANITE PANELS TO MATCH BRICK #3 COLOR
206	ALUMINUM WINDOW-WALL WITH INSULATED GLASS AND SPANDREL WITH OPERABLE WINDOWS
207	ALUMINUM CURTAIN-WALL WITH INSULATED GLASS AND SPANDREL
208	ALUMINUM STOREFRONT FRAME "PUNCHED" WINDOWS WITH EXTENDED MULLION COVER
209	ALUMINUM FRAMED NANAWALL
210	PAINTED STEEL TUBE RAILING (INTERIOR EGRESS STAIR)

KEYNOTE LEGEND	
KEYNOTE	DESCRIPTION
212	1/2" TEMPERED GLASS GUARDRAIL WITH STAINLESS STEEL RAIL CAP
213	METAL TRIM AT EDGE OF EXPOSED CONCRETE SLAB
214	ALUMINUM FRAMED SKYLIGHT
215	METAL CLAD CANOPY
216	CMU - STACK BOND
217	METAL COLUMN COVER
218	METAL PARAPET CAP AT BRICK VENEER WALL
219	SIGNAGE - N.I.C.
220	ALUMINUM DOOR WITH GLASS INSET

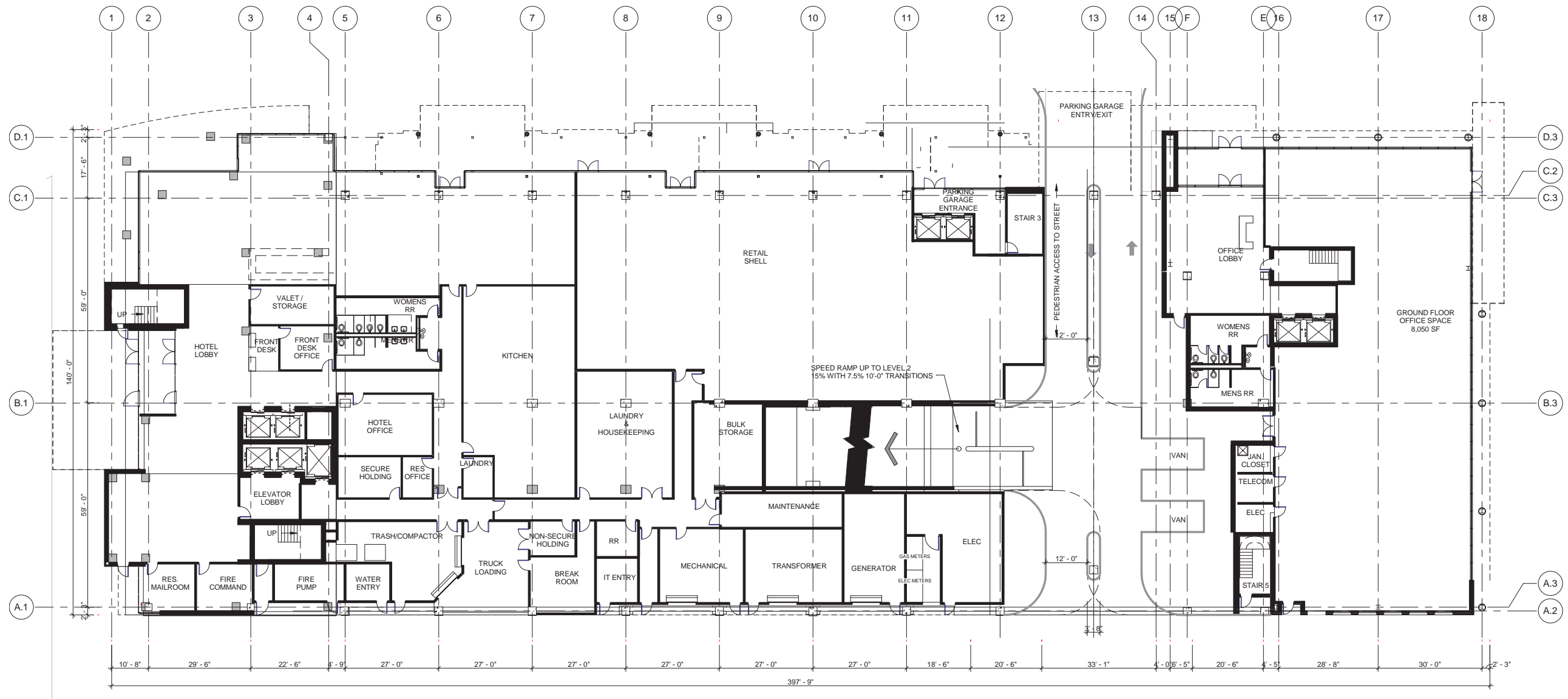


1 BUILDING ELEVATION - SOUTH  
1/32" = 1'-0"

President's Plaza

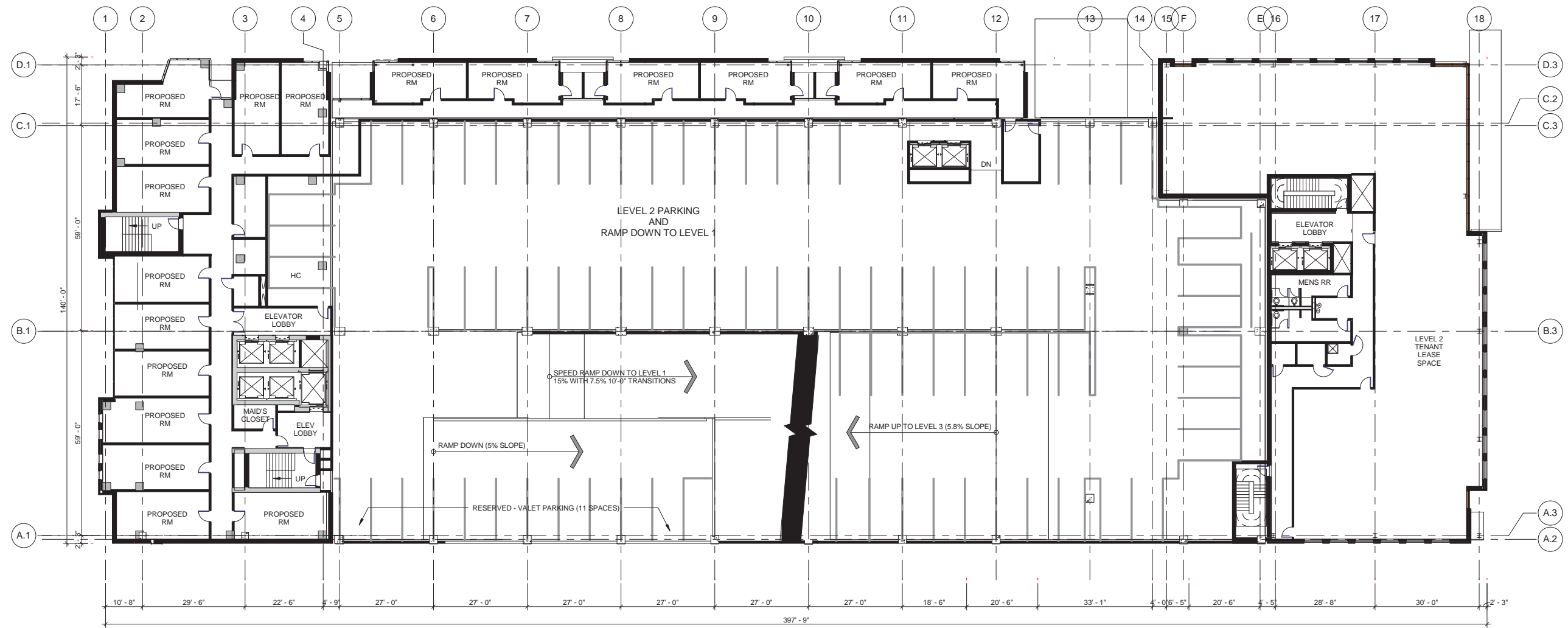




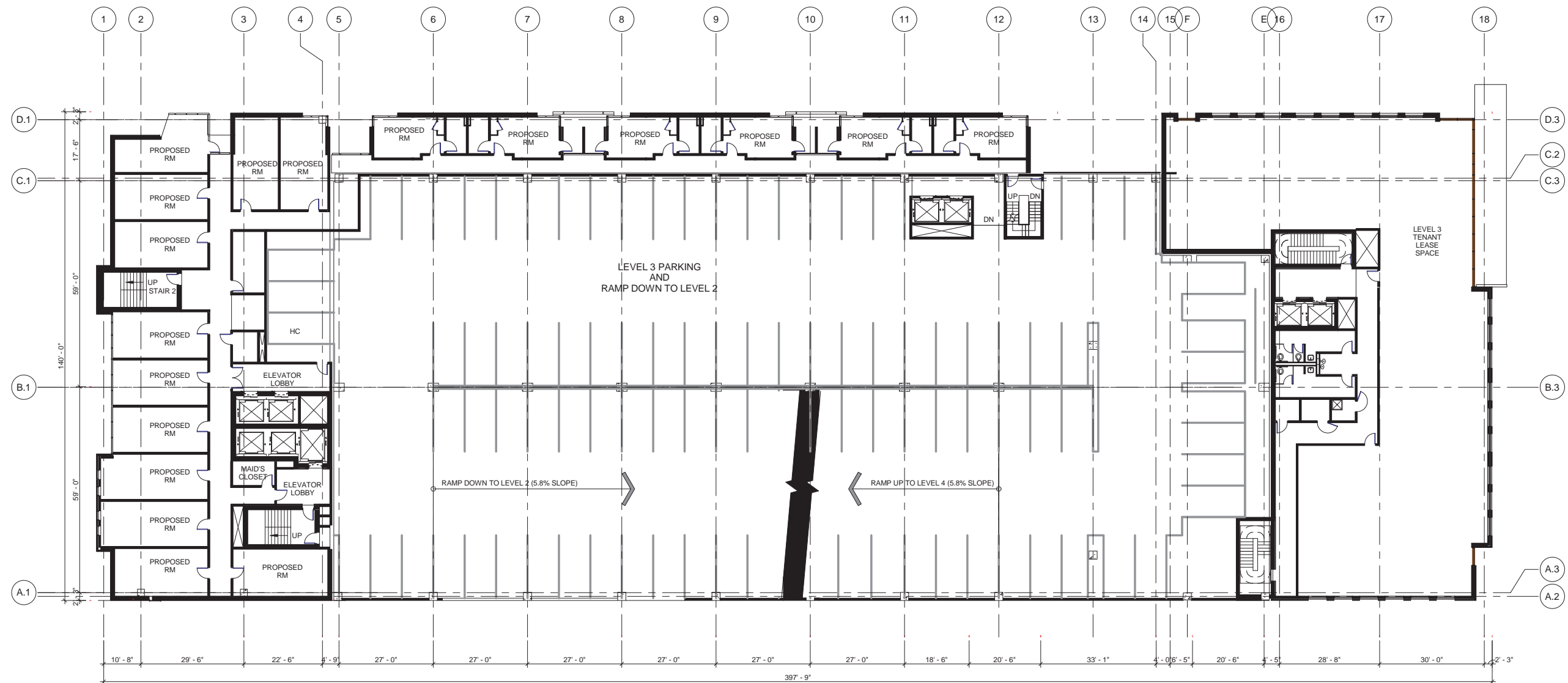


1 FIRST FLOOR PLAN  
1/32" = 1'-0"

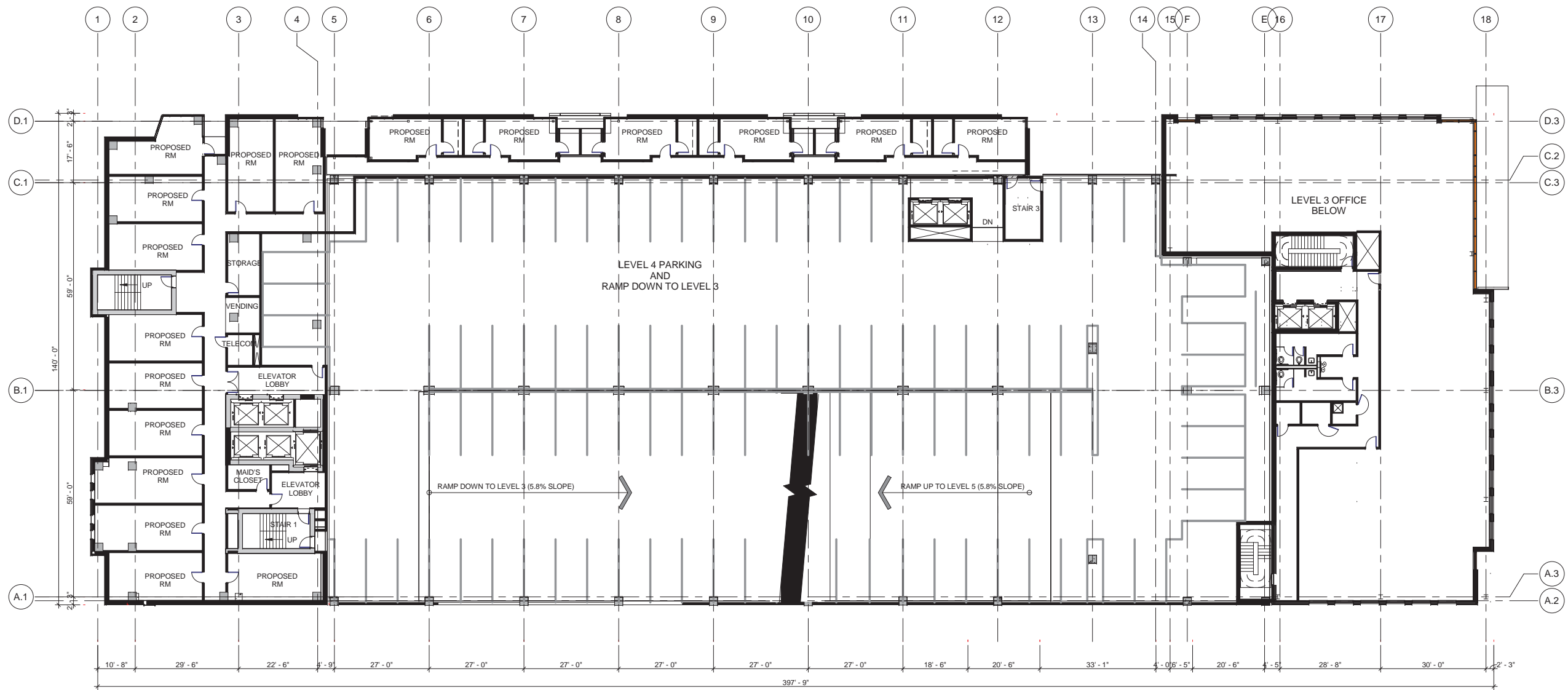




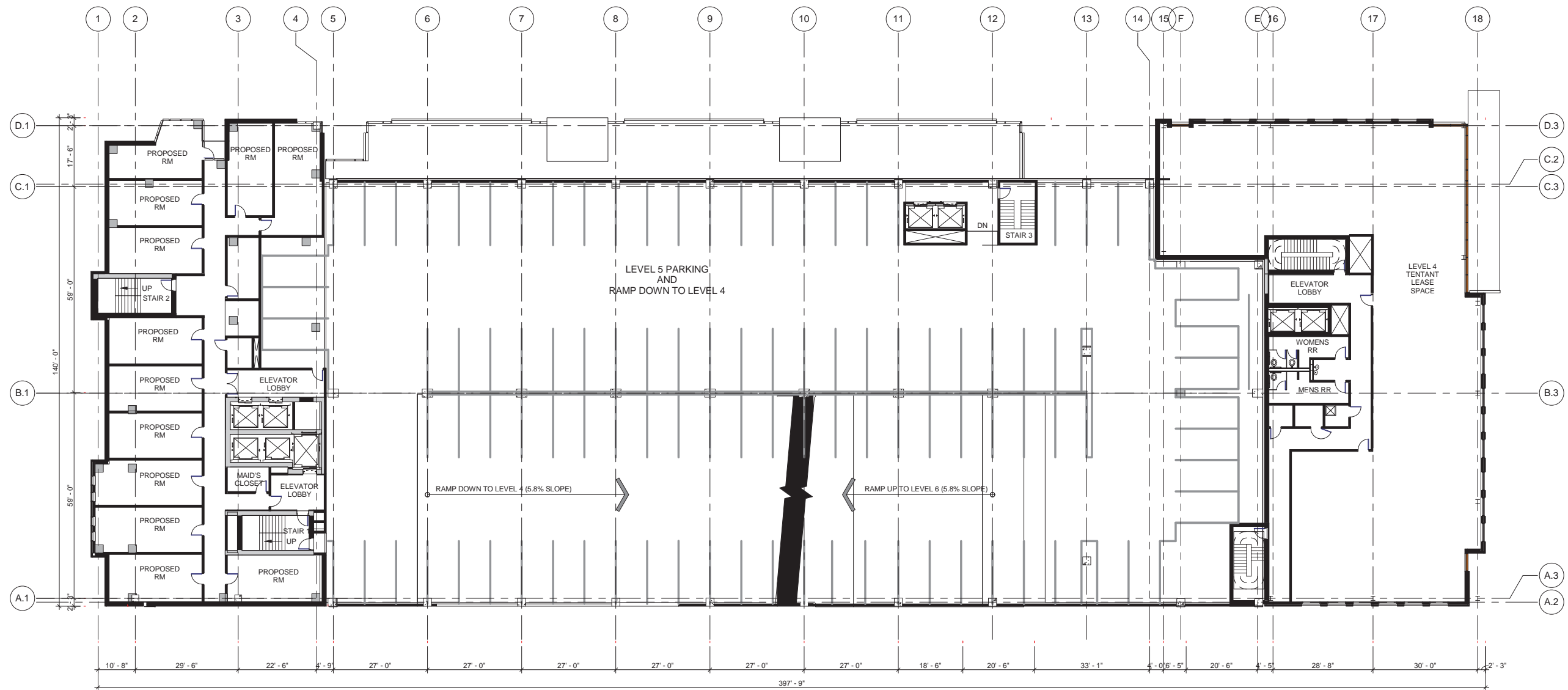
1 SECOND FLOOR PLAN  
1/32" = 1'-0"



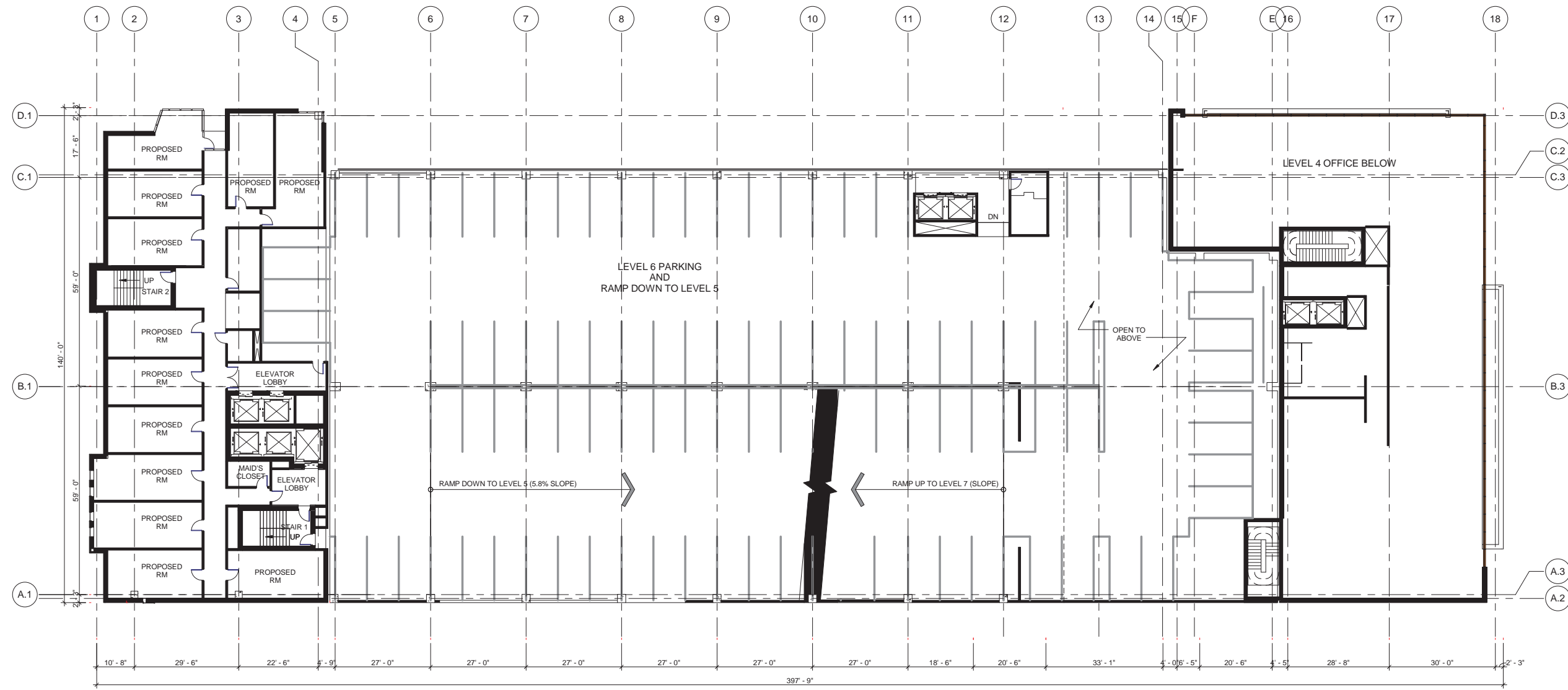
1 THIRD FLOOR PLAN  
1/32" = 1'-0"



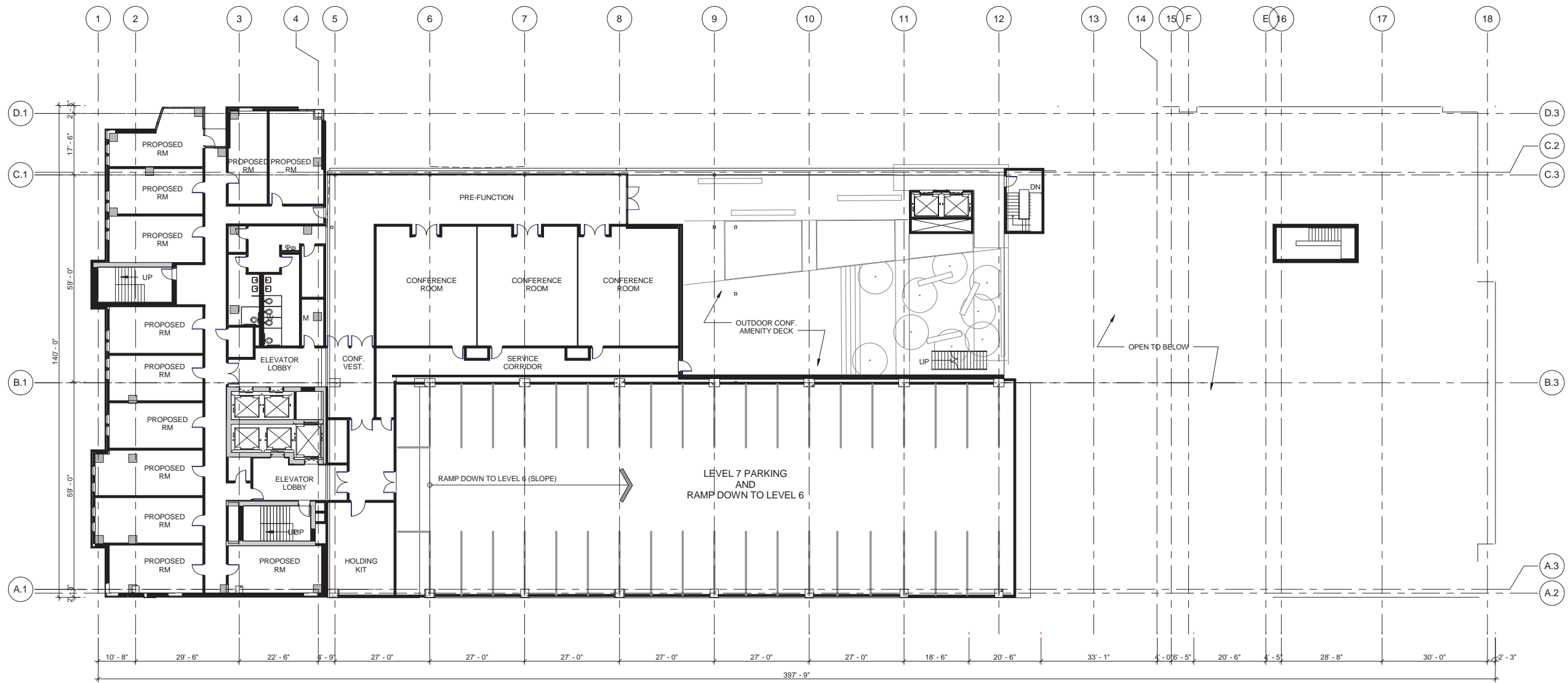
1 FOURTH FLOOR PLAN  
1/32" = 1'-0"



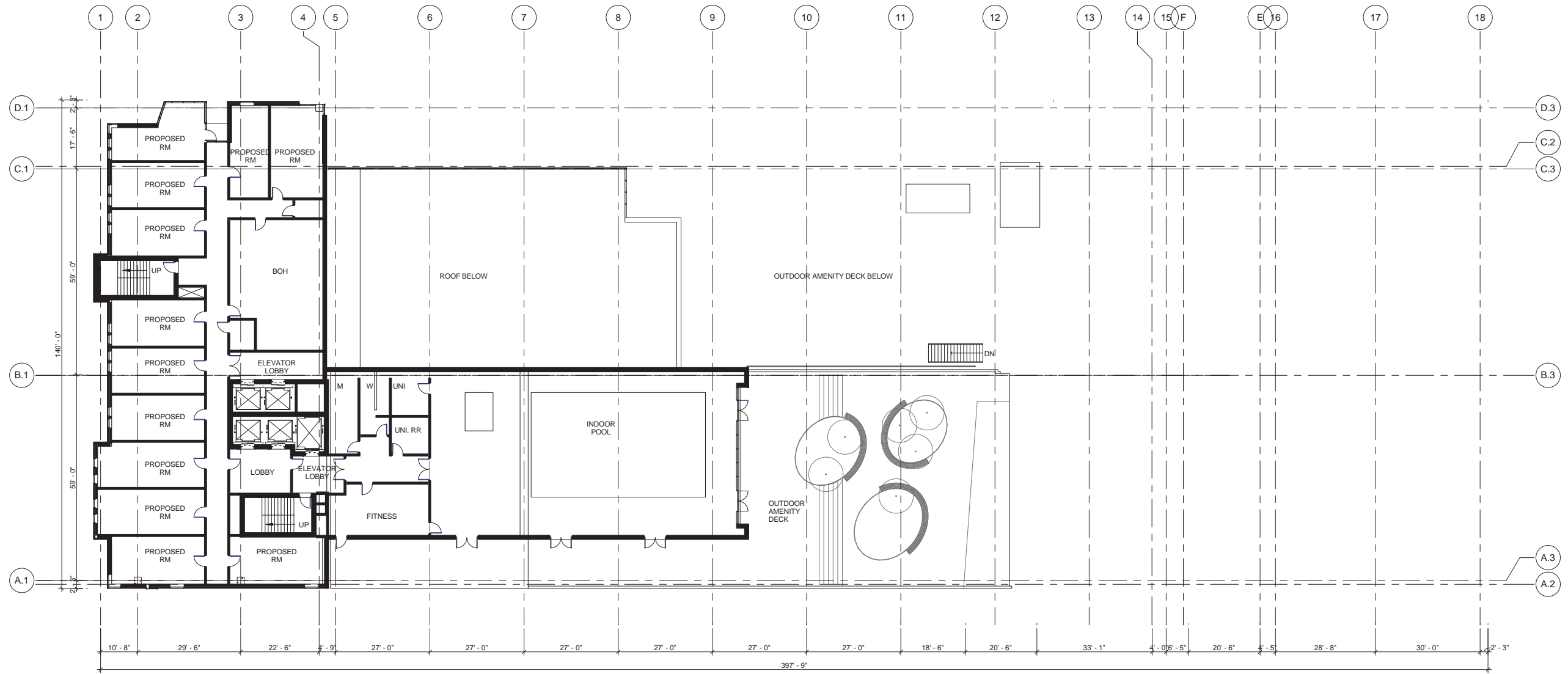
1 FIFTH FLOOR PLAN  
1/32" = 1'-0"



1 SIXTH FLOOR PLAN  
1/32" = 1'-0"

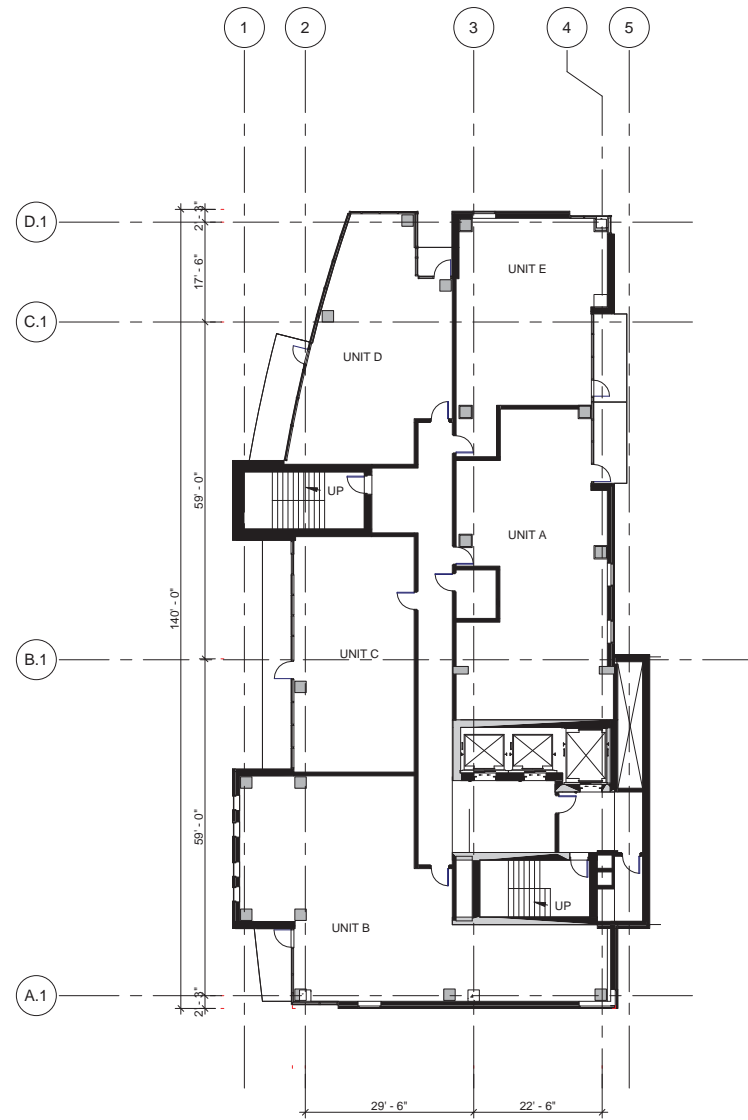


1 SEVENTH FLOOR PLAN  
1/32" = 1'-0"

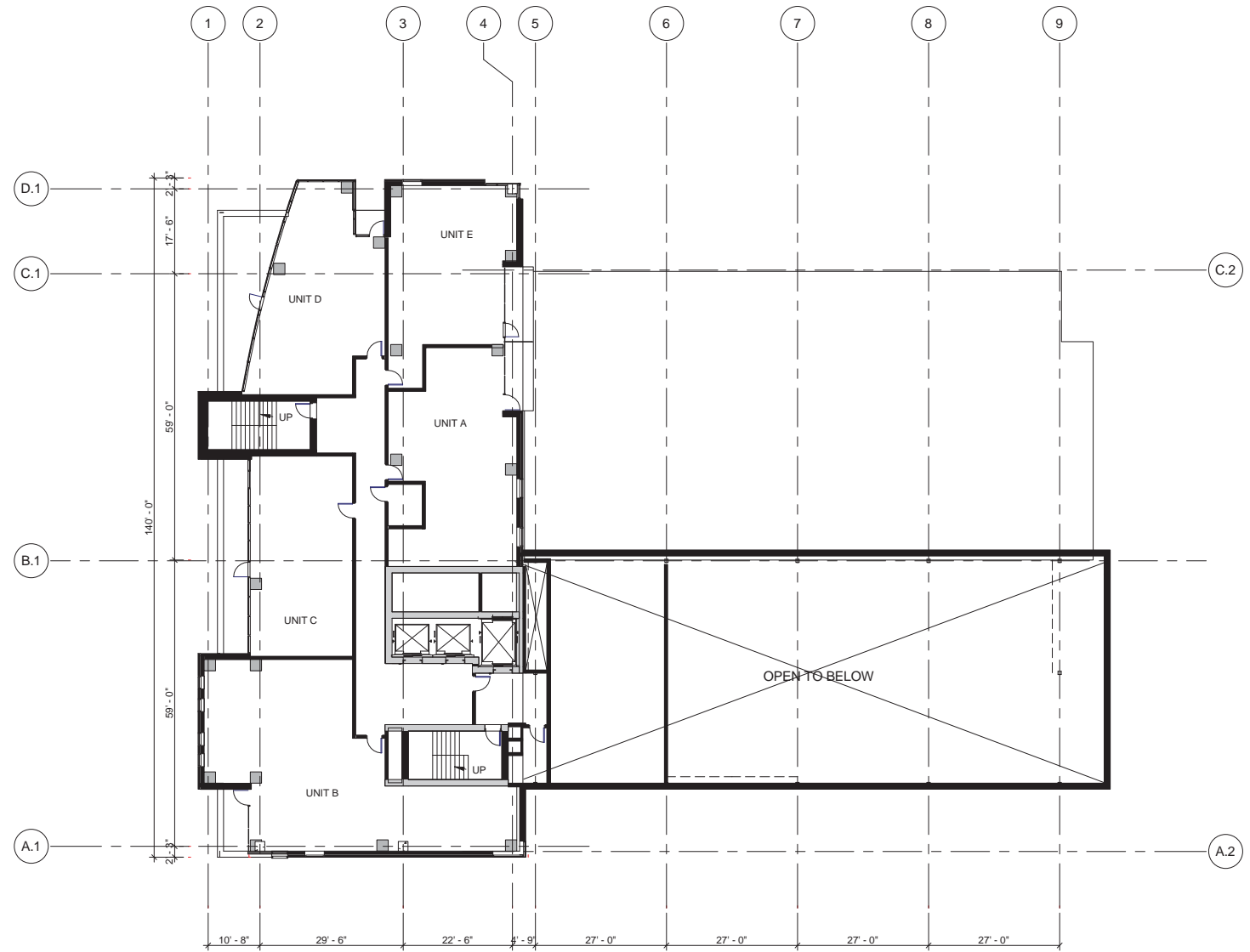


1 EIGHTH FLOOR PLAN  
1/32" = 1'-0"

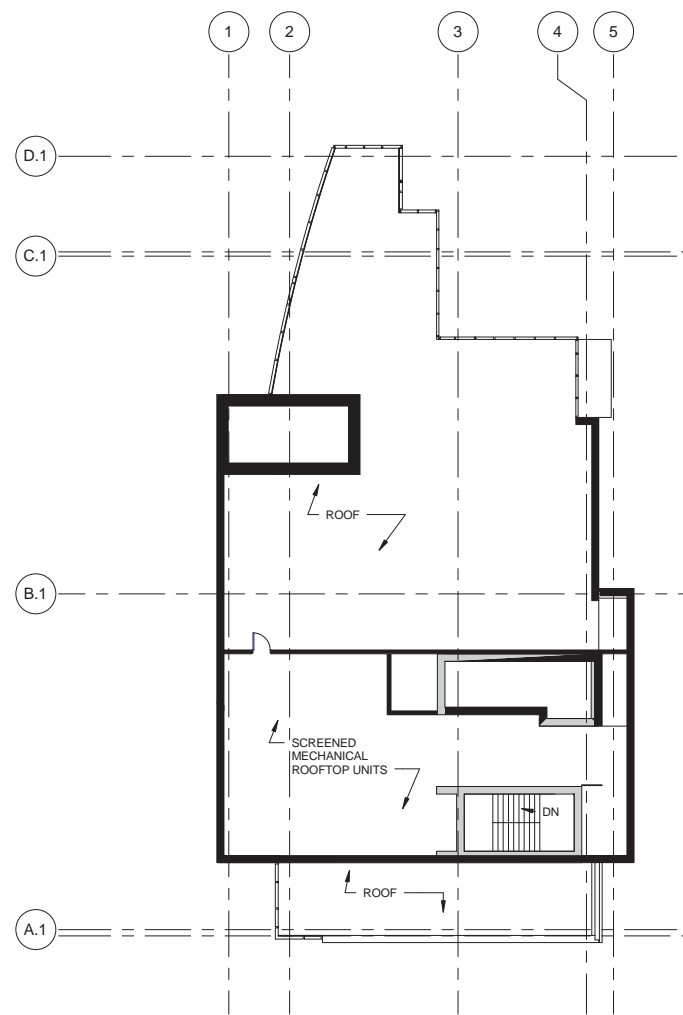




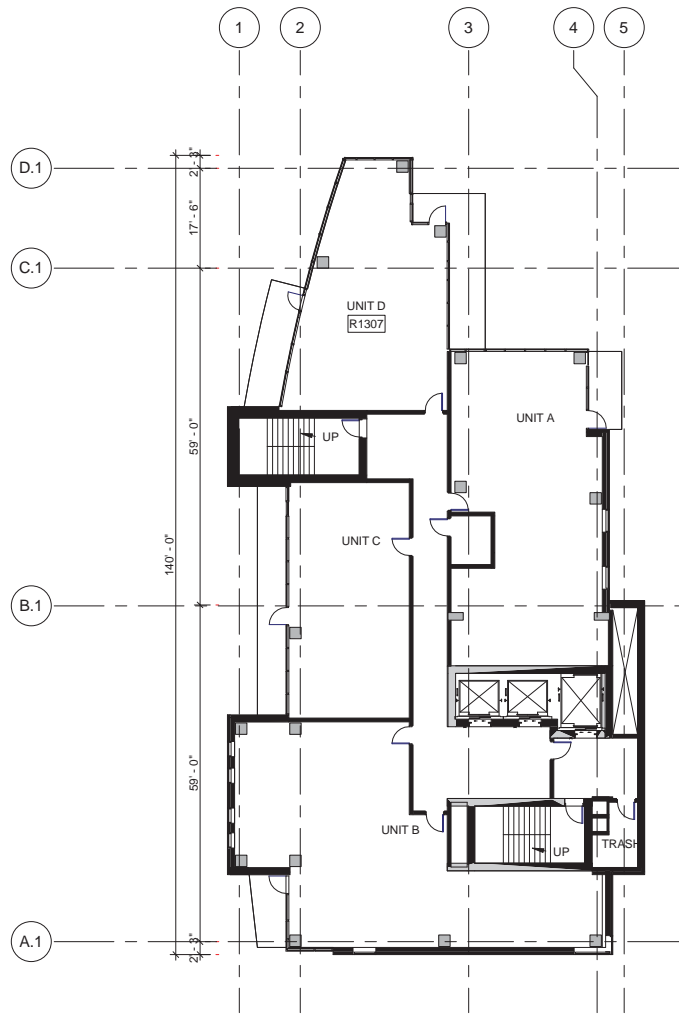
2 TENTH FLOOR PLAN (TYP 10, 11&12)  
1/132" = 1'-0"



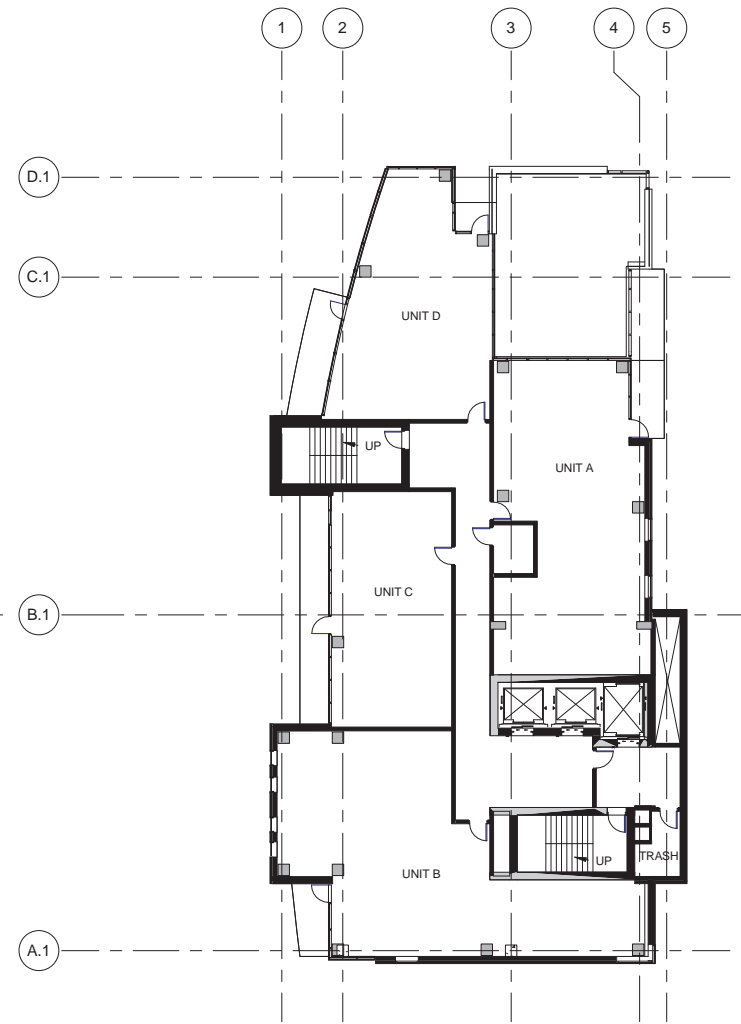
1 NINTH FLOOR PLAN  
1/32" = 1'-0"



3 MECH ROOF PLAN  
1/32" = 1'-0"



2 FOURTEENTH FLOOR PLAN (TYP 14 & 15)  
1/32" = 1'-0"



1 THIRTEENTH FLOOR PLAN  
1/32" = 1'-0"