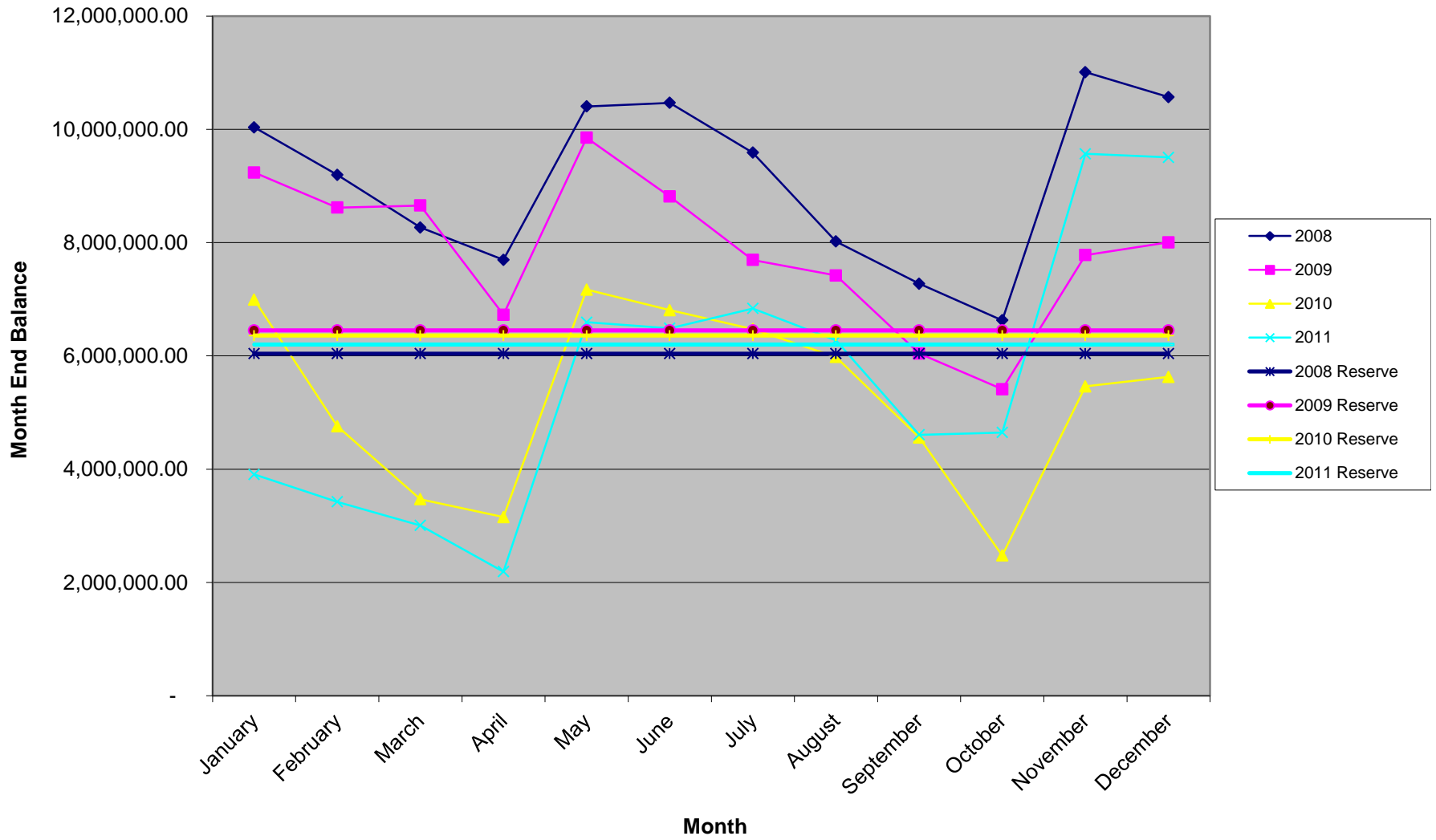
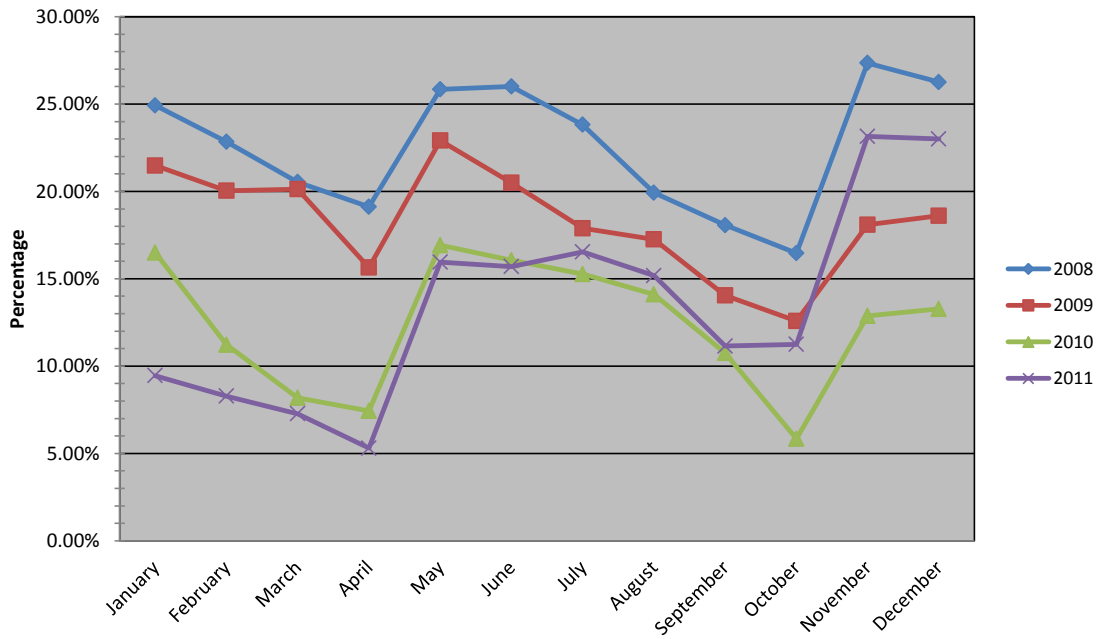


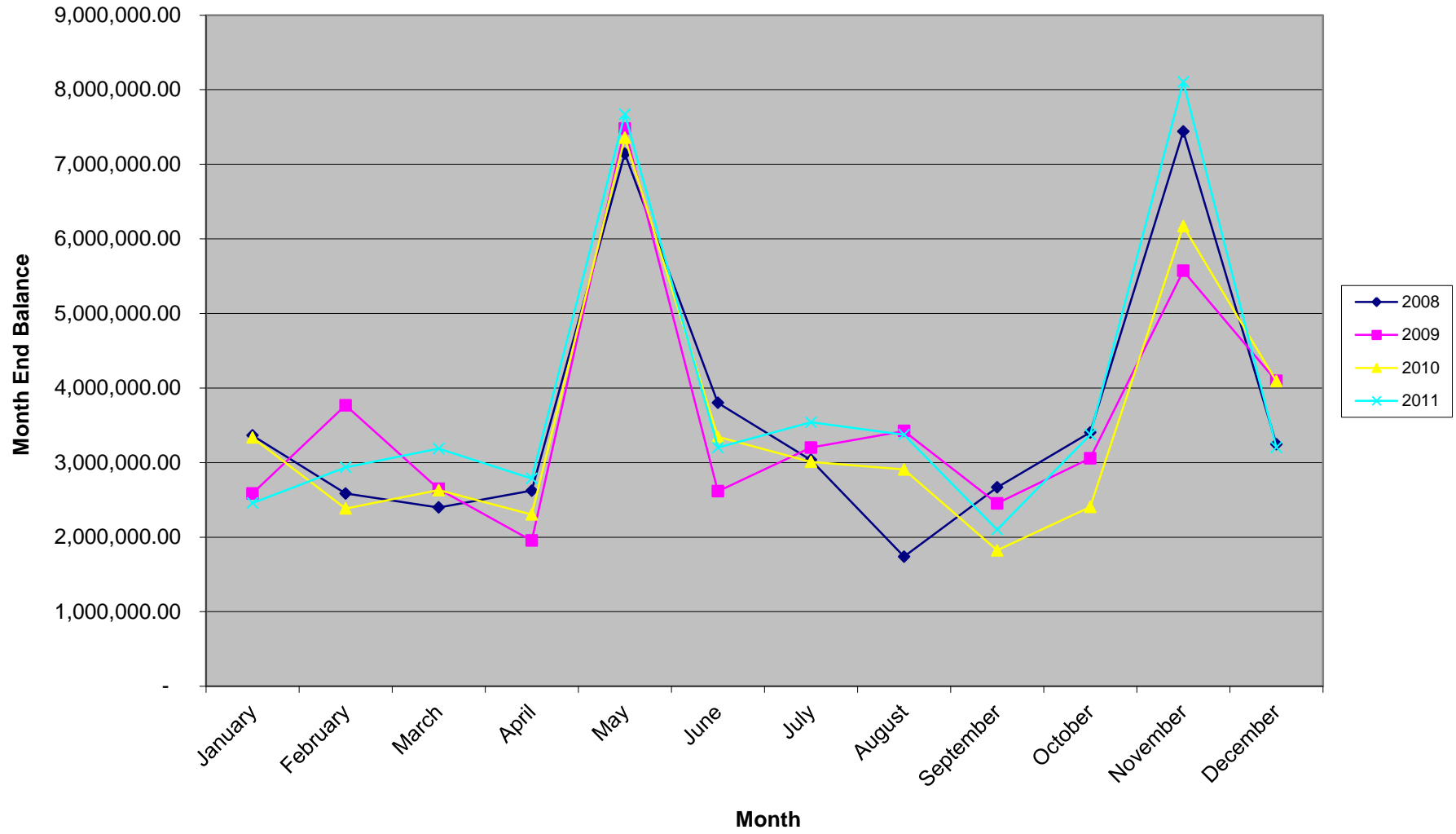
General Fund Cash



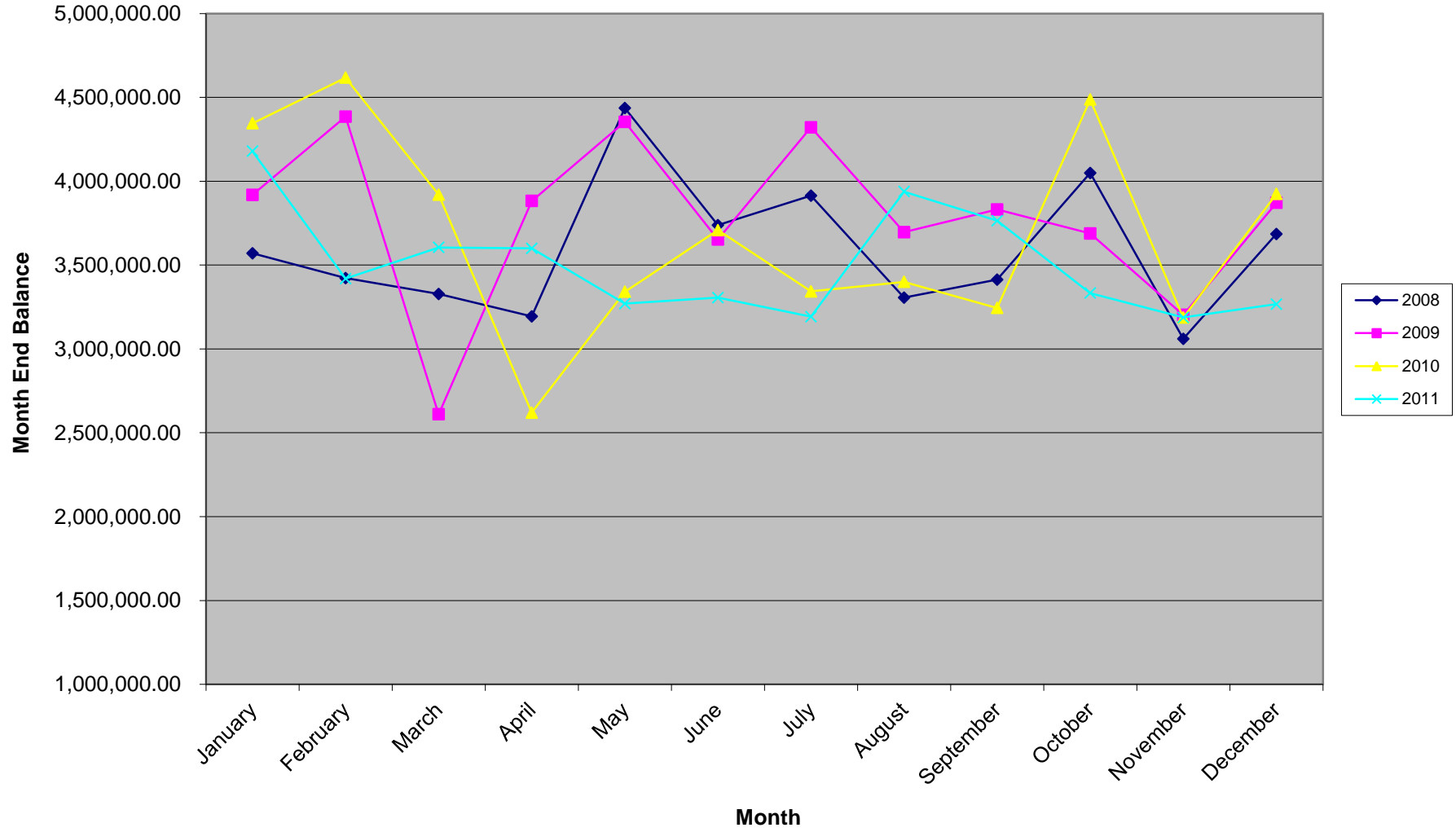
General Fund Cash as a Percent of Estimated Revenues



General Fund Received



General Fund Disbursed



City of Rapid City
 General Fund
 Cash Comparison - Unaudited

	2008	%	2009	%	2010	%	2011	%
January	10,033,131.30	24.92%	9,235,906.42	21.48%	6,993,288.44	16.50%	3,907,062.60	9.45%
February	9,196,152.41	22.84%	8,617,970.64	20.04%	4,759,591.40	11.23%	3,423,488.97	8.28%
March	8,266,243.28	20.53%	8,654,485.28	20.13%	3,469,831.70	8.18%	3,006,266.70	7.27%
April	7,695,897.47	19.12%	6,726,764.77	15.64%	3,153,993.61	7.44%	2,192,243.45	5.30%
May	10,403,469.65	25.84%	9,850,350.77	22.91%	7,170,888.58	16.91%	6,593,537.25	15.96%
June	10,466,675.09	26.00%	8,813,333.72	20.50%	6,806,278.74	16.05%	6,488,207.85	15.70%
July	9,587,036.07	23.82%	7,693,636.10	17.89%	6,473,997.23	15.27%	6,836,104.33	16.54%
August	8,019,825.72	19.92%	7,420,084.65	17.26%	5,980,598.32	14.11%	6,272,219.07	15.18%
September	7,273,511.81	18.07%	6,042,013.85	14.05%	4,559,397.65	10.75%	4,607,846.56	11.15%
October	6,628,092.44	16.47%	5,412,110.33	12.59%	2,477,723.37	5.84%	4,648,239.03	11.25%
November	11,008,822.17	27.35%	7,779,577.30	18.09%	5,461,345.27	12.88%	9,566,813.05	23.15%
December	10,569,863.97	26.26%	8,002,767.91	18.61%	5,629,014.28	13.28%	9,504,548.52	23.00%

	2008 Reserve	Estimated Rev	2009 Reserve	Estimated Rev	2010 Reserve	Estimated Rev	2011 Reserve	Estimated Rev
January	6,038,326.00	40,255,507.00	6,449,874.00	42,999,160.00	6,359,234.00	42,394,893.00	6,198,822.00	41,325,480.00
February	6,038,326.00	40,255,507.00	6,449,874.00	42,999,160.00	6,359,234.00	42,394,893.00	6,198,822.00	41,325,480.00
March	6,038,326.00	40,255,507.00	6,449,874.00	42,999,160.00	6,359,234.00	42,394,893.00	6,198,822.00	41,325,480.00
April	6,038,326.00	40,255,507.00	6,449,874.00	42,999,160.00	6,359,234.00	42,394,893.00	6,198,822.00	41,325,480.00
May	6,038,326.00	40,255,507.00	6,449,874.00	42,999,160.00	6,359,234.00	42,394,893.00	6,198,822.00	41,325,480.00
June	6,038,326.00	40,255,507.00	6,449,874.00	42,999,160.00	6,359,234.00	42,394,893.00	6,198,822.00	41,325,480.00
July	6,038,326.00	40,255,507.00	6,449,874.00	42,999,160.00	6,359,234.00	42,394,893.00	6,198,822.00	41,325,480.00
August	6,038,326.00	40,255,507.00	6,449,874.00	42,999,160.00	6,359,234.00	42,394,893.00	6,198,822.00	41,325,480.00
September	6,038,326.00	40,255,507.00	6,449,874.00	42,999,160.00	6,359,234.00	42,394,893.00	6,198,822.00	41,325,480.00
October	6,038,326.00	40,255,507.00	6,449,874.00	42,999,160.00	6,359,234.00	42,394,893.00	6,198,822.00	41,325,480.00
November	6,038,326.00	40,255,507.00	6,449,874.00	42,999,160.00	6,359,234.00	42,394,893.00	6,198,822.00	41,325,480.00
December	6,038,326.00	40,255,507.00	6,449,874.00	42,999,160.00	6,359,234.00	42,394,893.00	6,198,822.00	41,325,480.00

City of Rapid City
General Fund
Received and Transferred In - Unaudited

	2008	2009	2010	2011
January	3,363,209.53	2,584,788.57	3,335,314.64	2,456,872.42
February	2,585,013.33	3,766,853.80	2,383,512.43	2,935,985.93
March	2,397,911.65	2,646,614.24	2,630,509.32	3,187,558.76
April	2,623,716.72	1,954,132.06	2,303,932.76	2,785,904.46
May	7,143,754.35	7,476,980.14	7,357,513.38	7,671,391.85
June	3,801,369.66	2,615,598.66	3,343,754.71	3,200,407.15
July	3,033,920.29	3,201,019.73	3,010,445.92	3,540,377.15
August	1,738,407.63	3,422,381.74	2,906,798.26	3,374,156.95
September	2,666,910.91	2,452,882.22	1,822,910.44	2,099,801.38
October	3,403,929.81	3,058,234.88	2,405,217.49	3,373,576.82
November	7,440,601.22	5,570,175.55	6,170,215.00	8,106,510.37
December	3,246,067.41	4,094,387.98	4,091,789.92	3,204,509.34

City of Rapid City
 General Fund
 Disbursed and Transferred Out - Unaudited

	2008	2009	2010	2011
January	3,569,723.85	3,918,746.12	4,344,794.11	4,178,824.10
February	3,421,992.22	4,384,789.58	4,617,209.47	3,419,559.56
March	3,327,820.78	2,610,099.60	3,920,269.02	3,604,781.03
April	3,194,062.53	3,881,852.57	2,619,770.85	3,599,927.71
May	4,436,182.17	4,353,394.14	3,340,618.41	3,270,098.05
June	3,738,164.22	3,652,615.71	3,708,364.55	3,305,736.55
July	3,913,559.31	4,320,717.35	3,342,727.43	3,192,480.67
August	3,305,617.98	3,695,933.19	3,400,197.17	3,938,042.21
September	3,413,224.82	3,830,953.02	3,244,111.11	3,764,173.89
October	4,049,349.18	3,688,138.40	4,486,891.77	3,333,184.35
November	3,059,871.49	3,202,708.58	3,186,593.10	3,187,936.35
December	3,685,025.61	3,871,197.37	3,924,120.91	3,266,773.87
Check				
January	-	-	-	-
February	-	-	-	-
March	-	-	-	-
April	-	-	-	-
May	-	-	-	-
June	-	-	-	-
July	-	-	-	-
August	-	-	-	-
September	-	-	-	-
October	-	-	-	-
November	-	-	-	-
December	-	-	-	-