



# **RapidTRIP 2035 - The Long Range Transportation Plan for the Rapid City Area**

## **MAP APPENDIX**

Figure 3-2: Residential Growth (2000 to 2008)

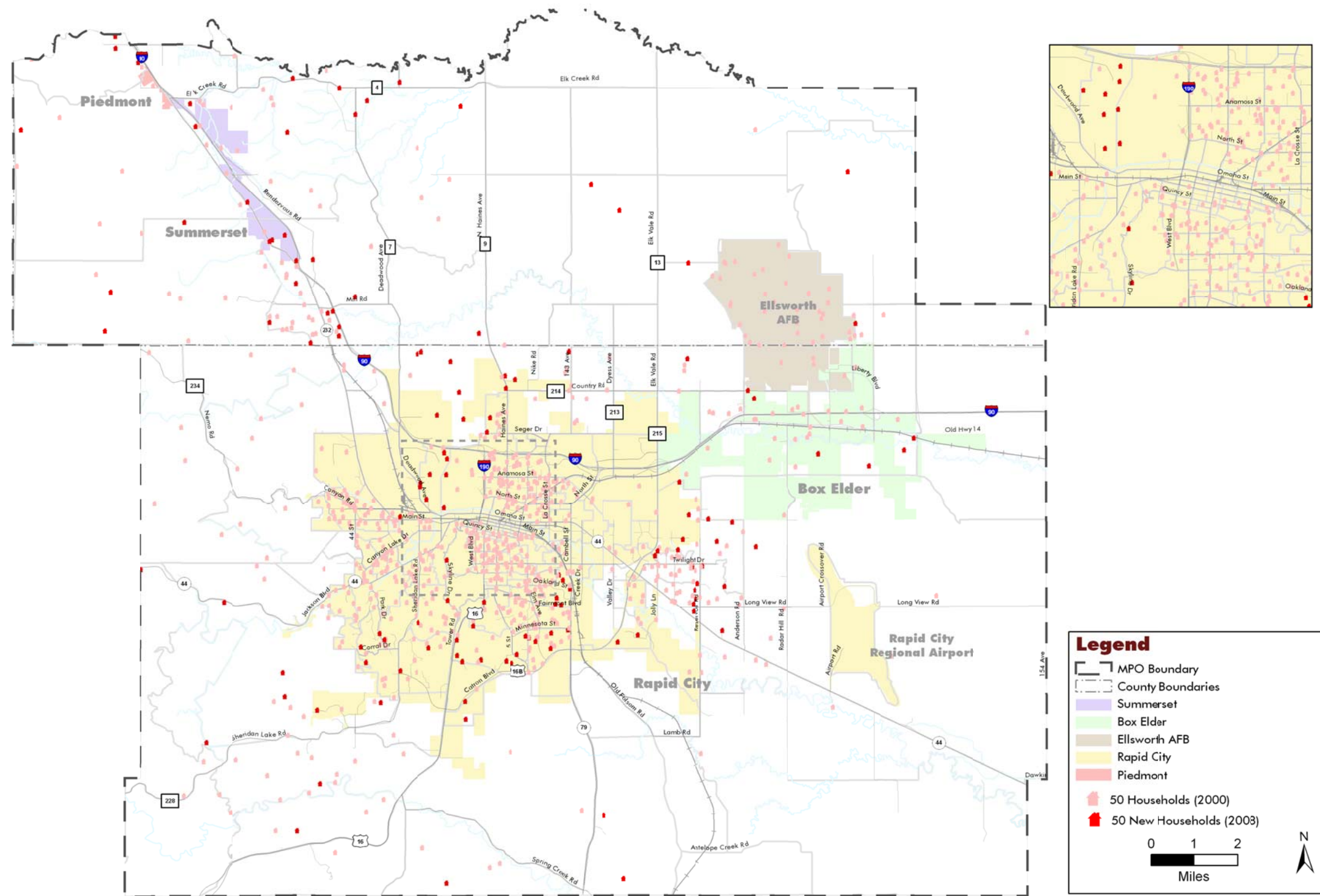


Figure 3-3: Residential Growth (2008 to 2035)

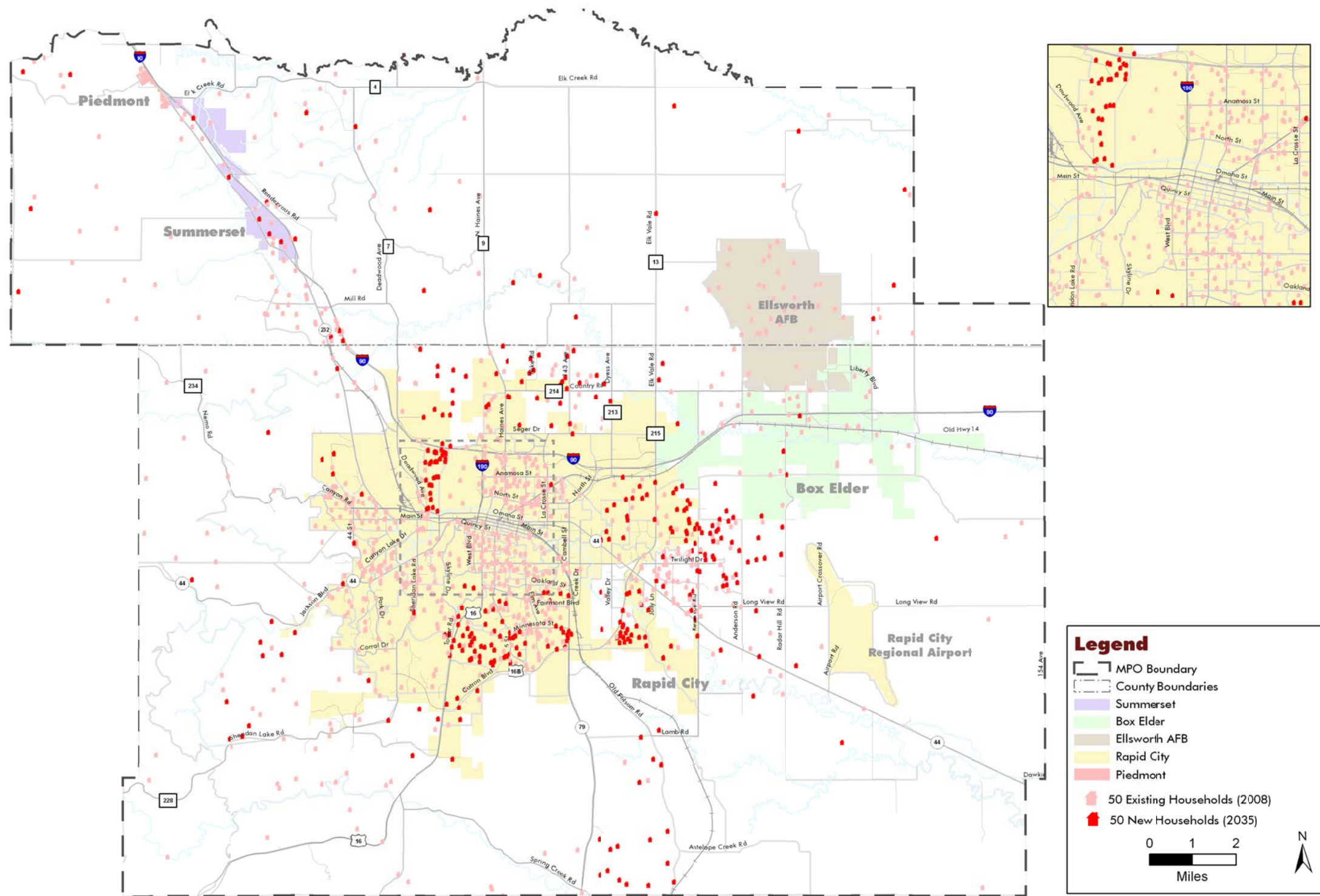


Figure 3-5: Retail Employment Growth

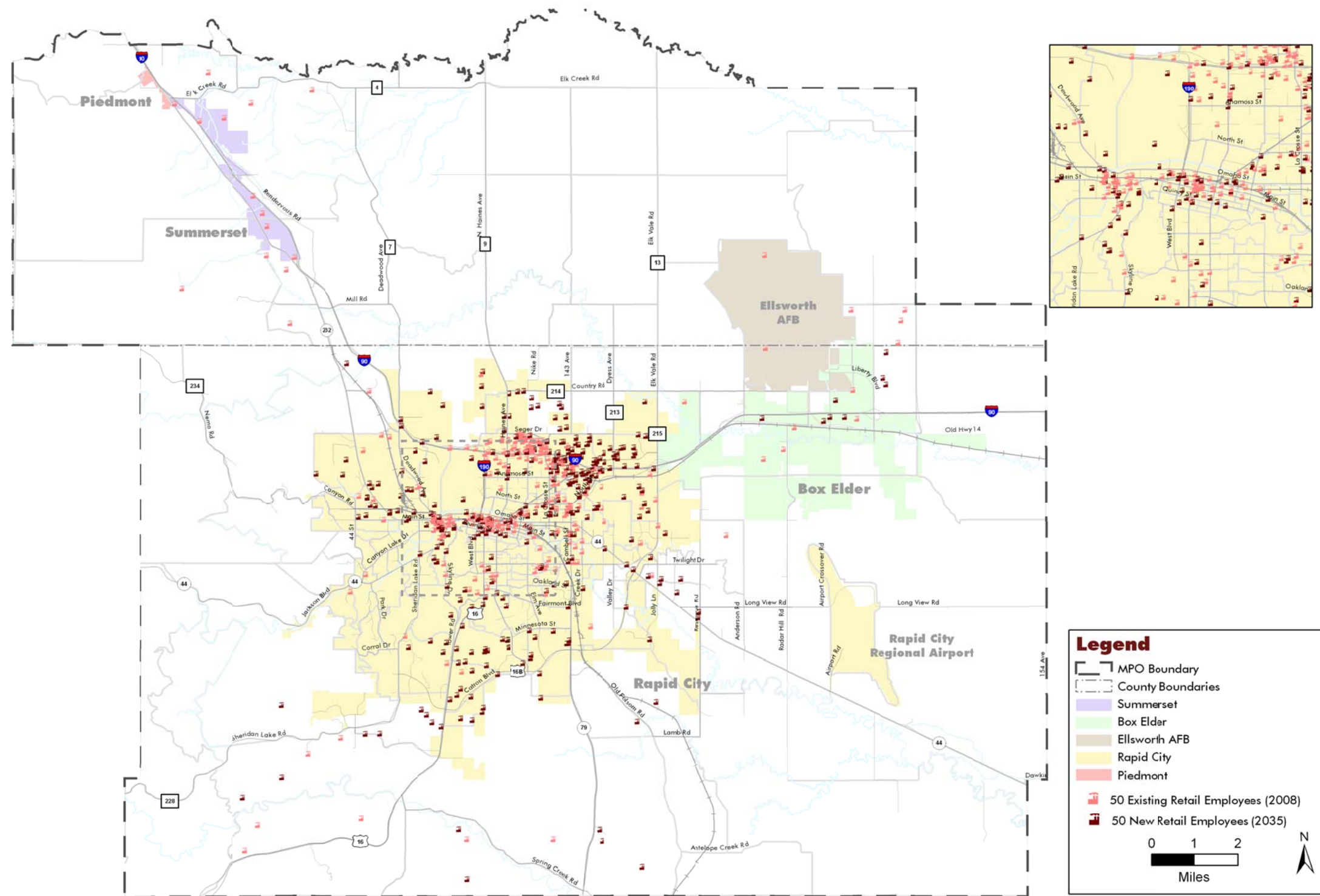


Figure 3-6: Office/Service Employment Growth

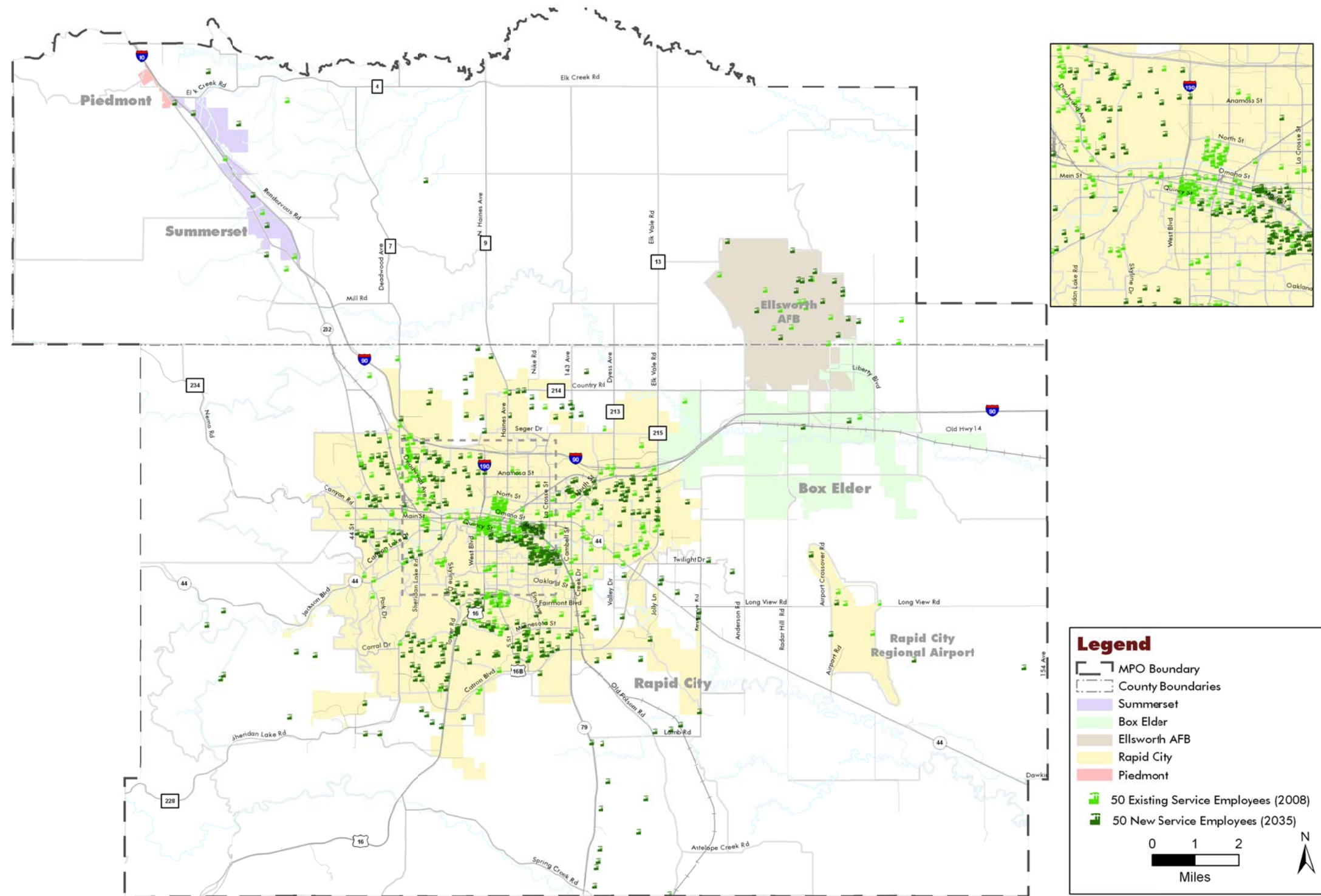


Figure 3-7: Industrial Employment Growth

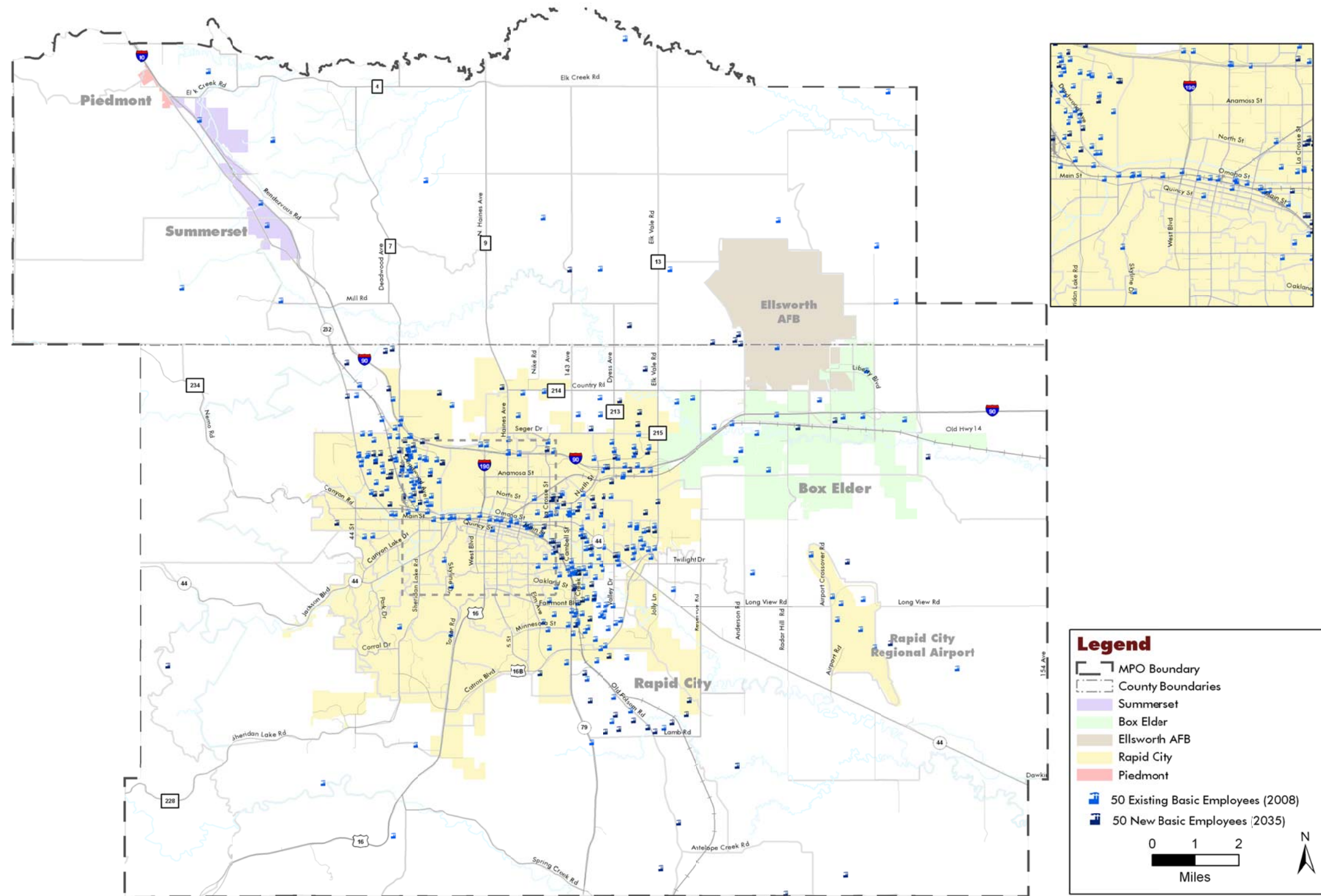


Figure 3-8: Public Sector Employment Growth

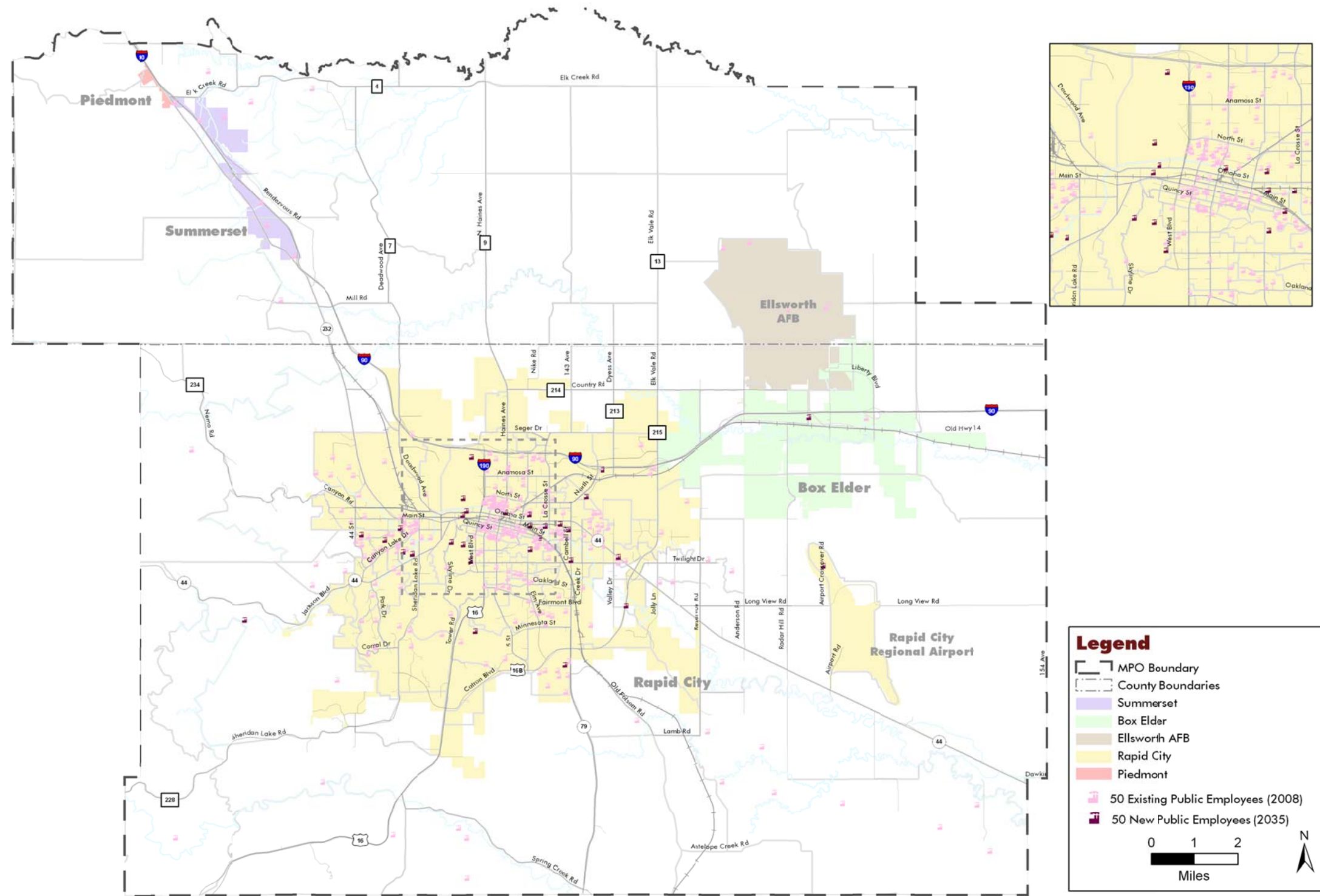


Figure 5-2: Bicycle Network Alternatives

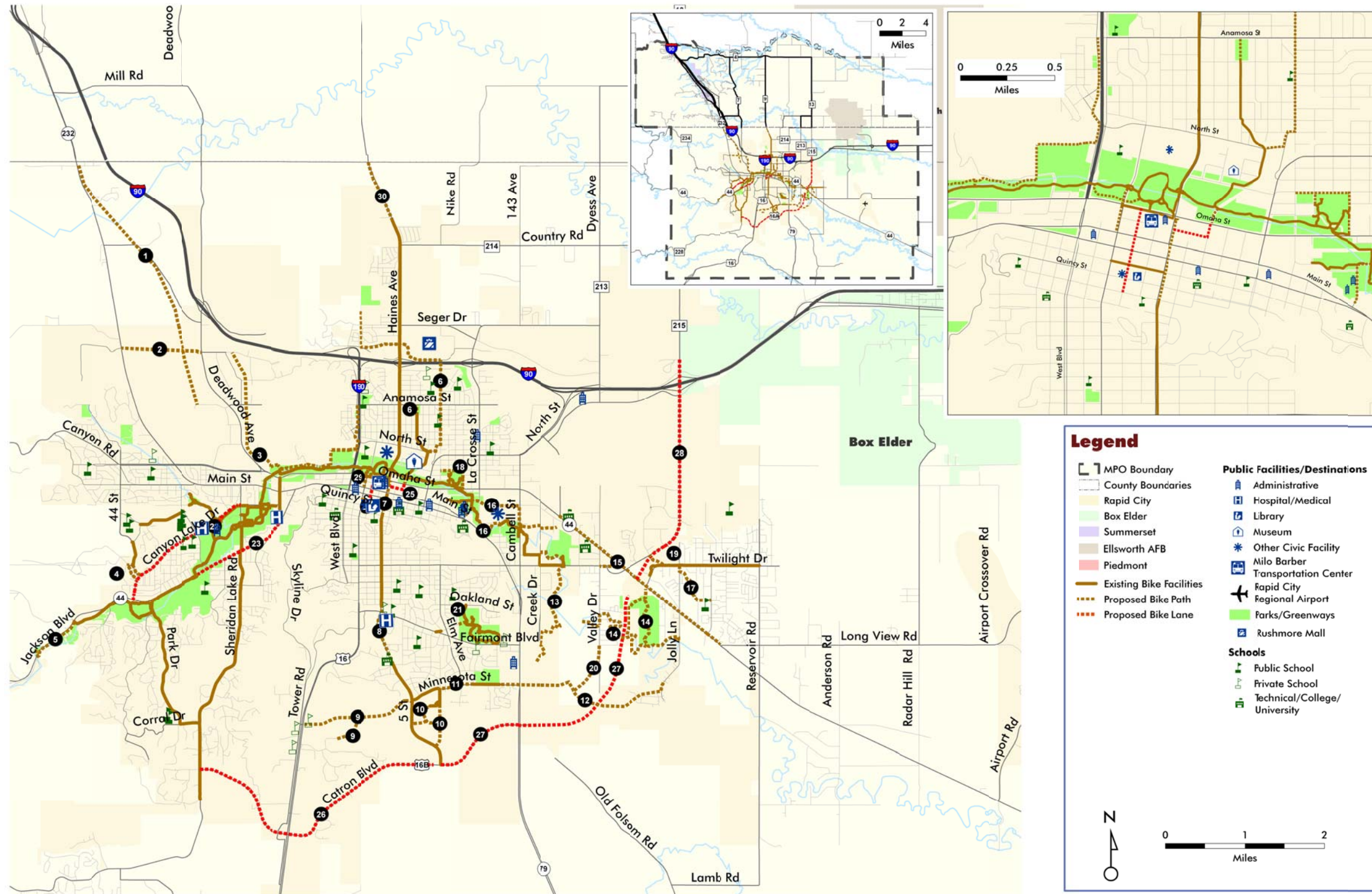




Figure 5-3: Financially-Constrained Non-Motorized Plan

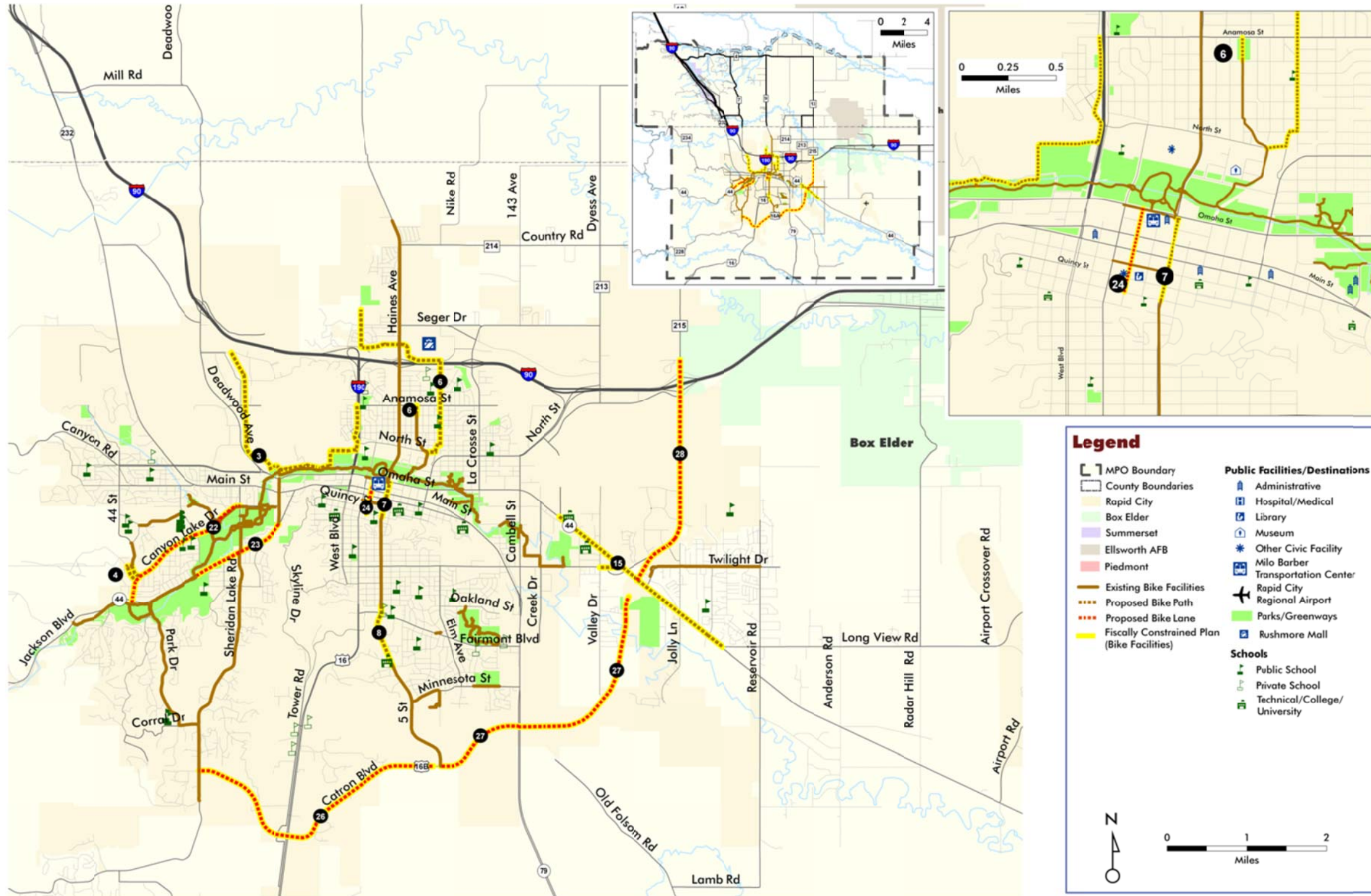


Figure 7-2: Existing and Committed Roadway Network

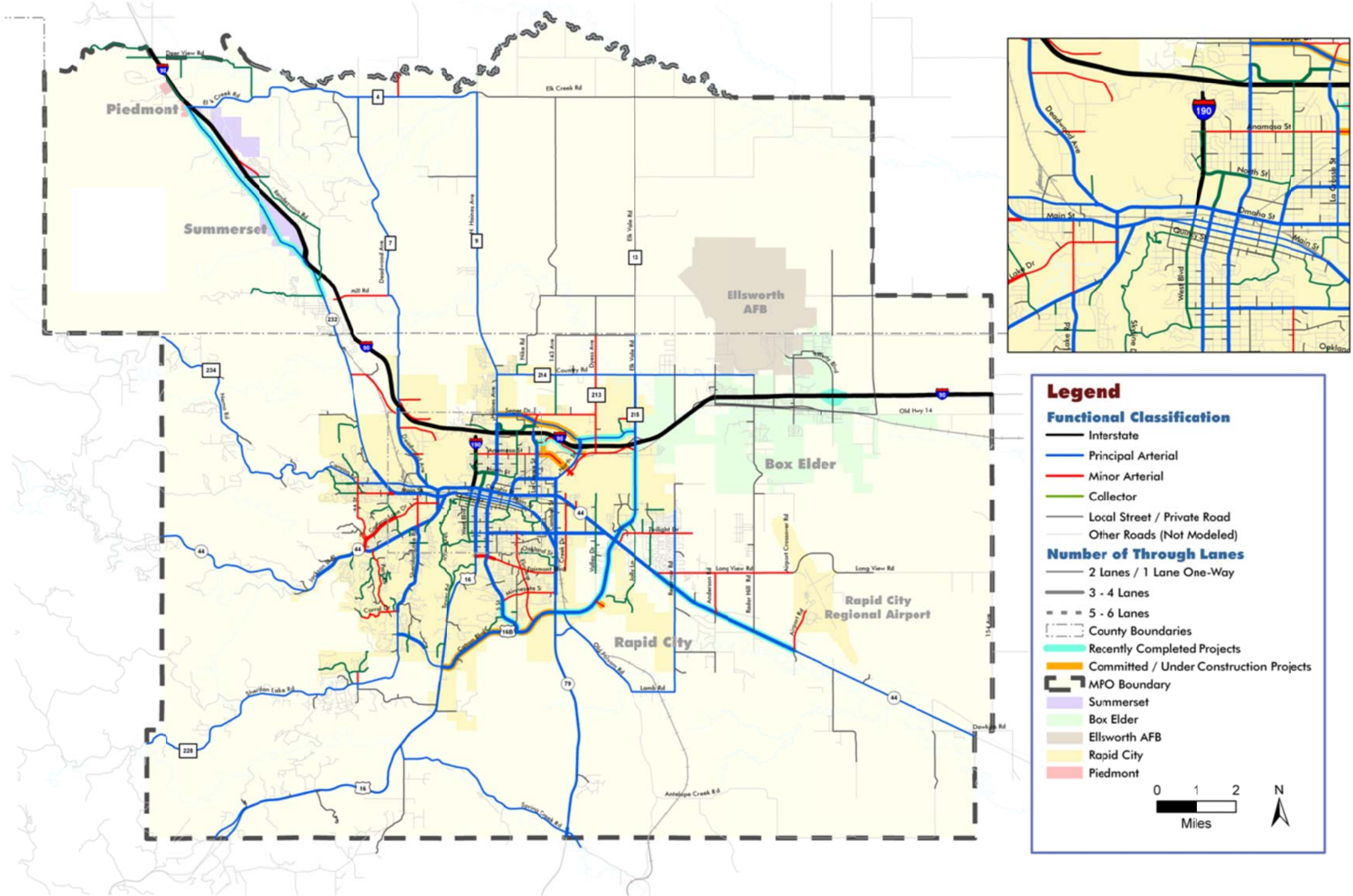


Figure 7-4: Roadway Alternatives

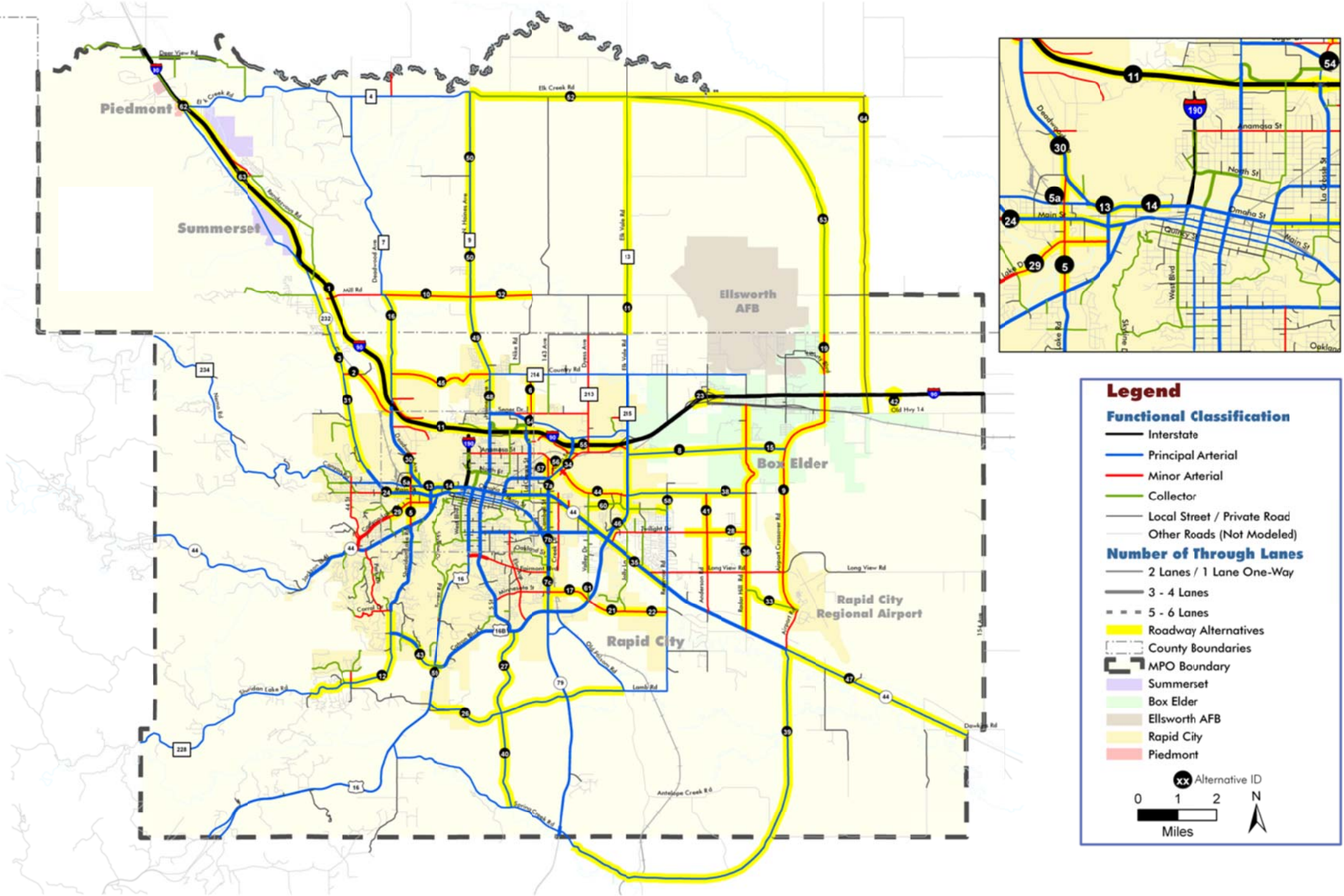


Figure 7-5: Recommended Financially Constrained Roadway Plan

