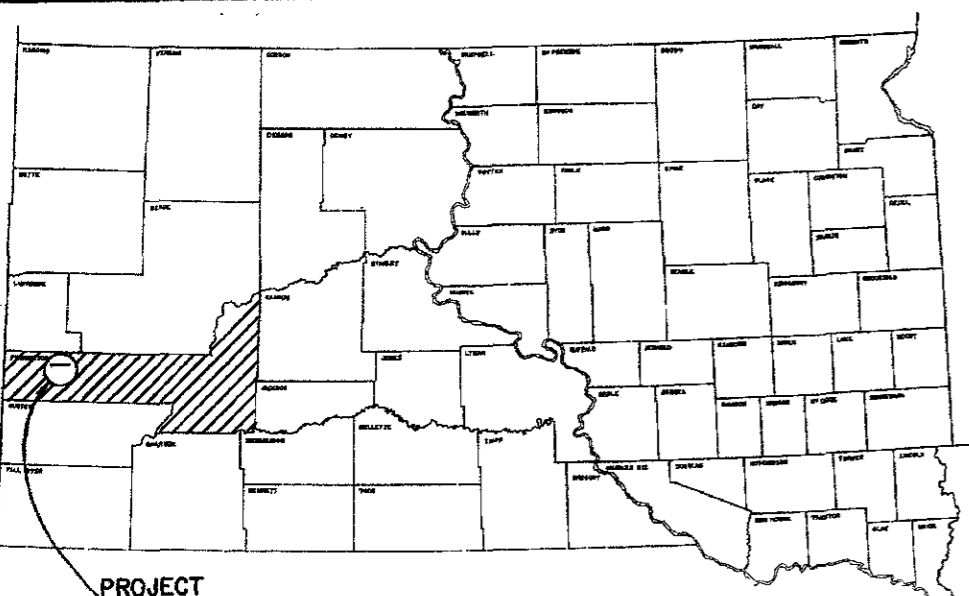


STATE OF SOUTH DAKOTA  
DEPARTMENT OF HIGHWAYS

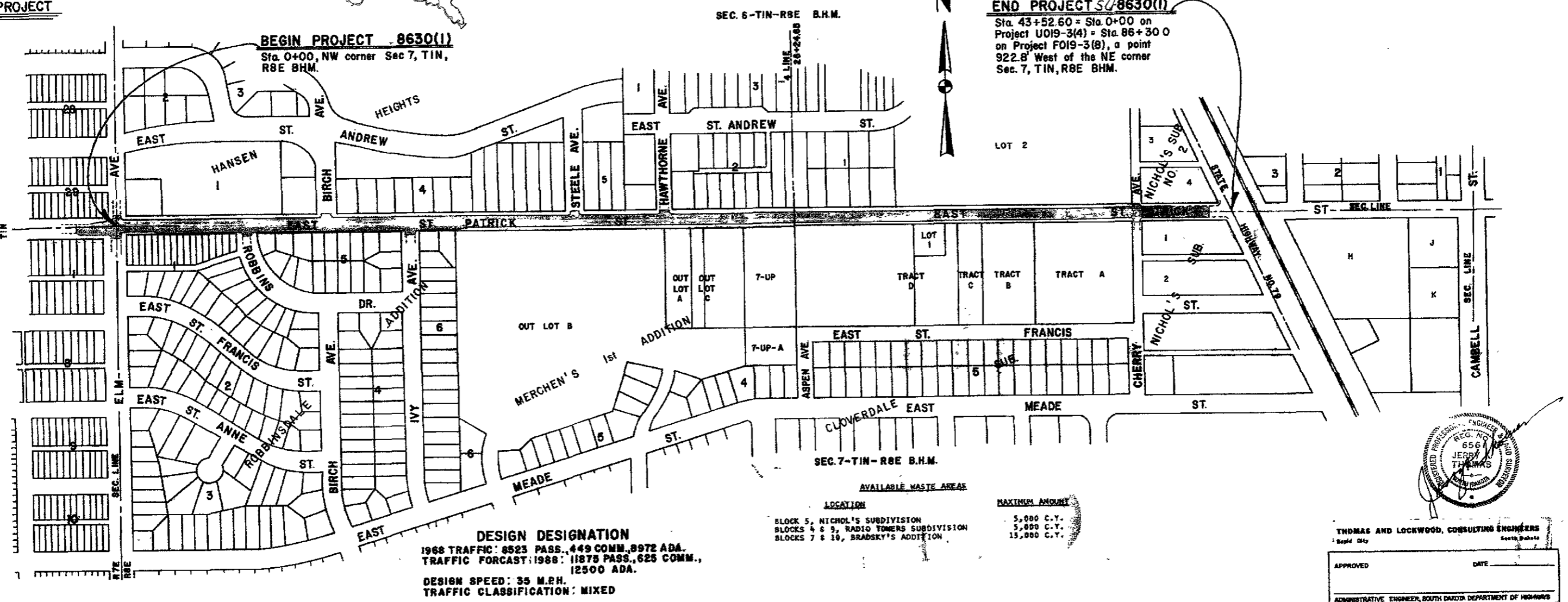
PLANS FOR PROPOSED  
**FEDERAL AID PROJECT  
NO. SU8630(1)**  
FEDERAL AID SECONDARY ROUTE NO. 863  
**PENNINGTON COUNTY**

INDEX OF SHEETS

SHEET NO. 1	TITLE SHEET
SHEET NO. 2	ESTIMATE OF QUANTITIES - GRADING AND SURFACING
SHEET NO. 3	GENERAL NOTES - RATES OF MATERIALS
SHEET NO. 4	PIPE SUMMARY AND ESTIMATE OF PIPE QUANTITIES
SHEET NO. 5	TYPICAL SECTIONS
SHEET NO. 6 - 14 INCL.	PLAN-PROFILES
SHEET NO. 15 - 16 INCL.	STORM SEWER OUTFALL LINE - ELM AVENUE
SHEET NO. 17	STORM SEWER OUTFALL LINE - CHERRY AVENUE AND HIGHWAY 79
SHEET NO. 18	STRIPING AND TRAFFIC SIGN LAYOUT
SHEET NO. 19	APPROACH PAVEMENT AND GUTTER DETAILS, MANHOLE DETAILS, TYPE B INLET DETAILS
SHEET NO. 20	DETAILS OF SPECIAL DROP INLET - STA. 38+29
SHEET NO. 21	DETAILS OF TYPE "D" SPECIAL DROP INLETS
SHEET NO. 22 - 28 INCL.	STANDARD DRAWINGS
SHEET NO. 29 - 30 INCL.	CONSTRUCTION SIGNING
SHEET NO. 31 - 59 INCL.	CROSS SECTIONS

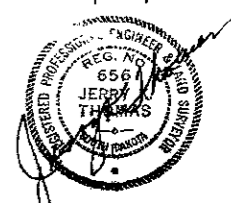


PROJECT



**DESIGN DESIGNATION**  
1968 TRAFFIC: 8523 PASS., 449 COMM., 8972 ADA.  
TRAFFIC FORECAST: 1988: 11875 PASS., 625 COMM., 12500 ADA.  
DESIGN SPEED: 35 M.P.H.  
TRAFFIC CLASSIFICATION: MIXED

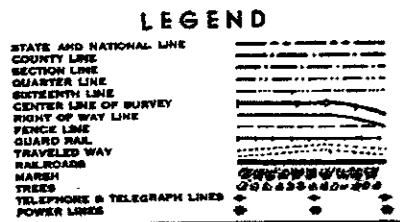
AVAILABLE WASTE AREAS	LOCATION	MAXIMUM AMOUNT
	BLOCK 5, NICHOL'S SUBDIVISION	5,000 C.Y.
	BLOCKS 4 & 9, RADIO TONERS SUBDIVISION	5,000 C.Y.
	BLOCKS 7 & 10, BRADSKY'S ADDITION	15,000 C.Y.



THOMAS AND LOCKWOOD, CONSULTING ENGINEERS  
1014 10th St. Rapid City, S.D. 57701

APPROVED	DATE
ADMINISTRATIVE ENGINEER, SOUTH DAKOTA DEPARTMENT OF HIGHWAYS	

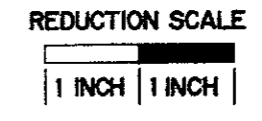
U.S. DEPT. OF TRANSPORTATION FEDERAL HIGHWAY ADMIN. Bureau of Public Roads	
Approved	Date
DIVISION ENGINEER	



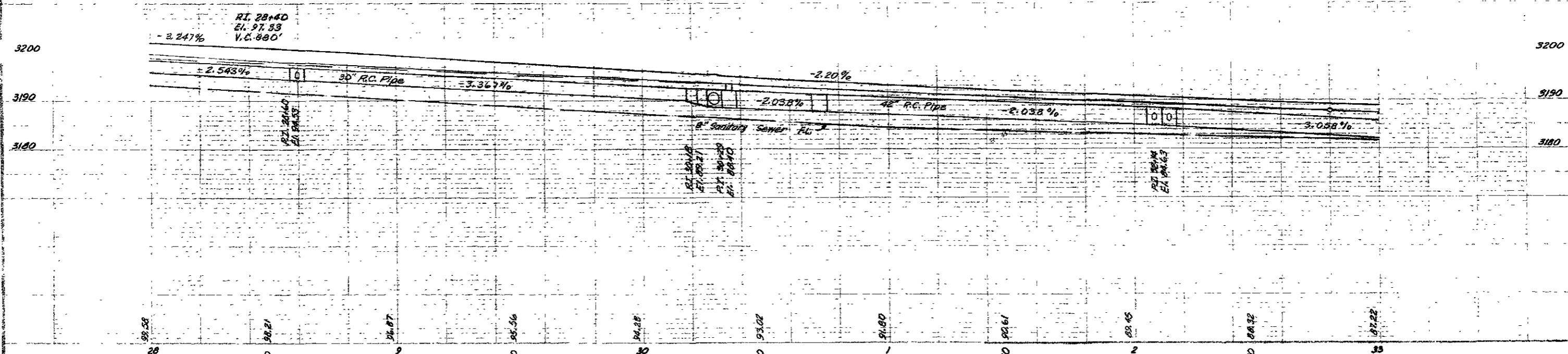
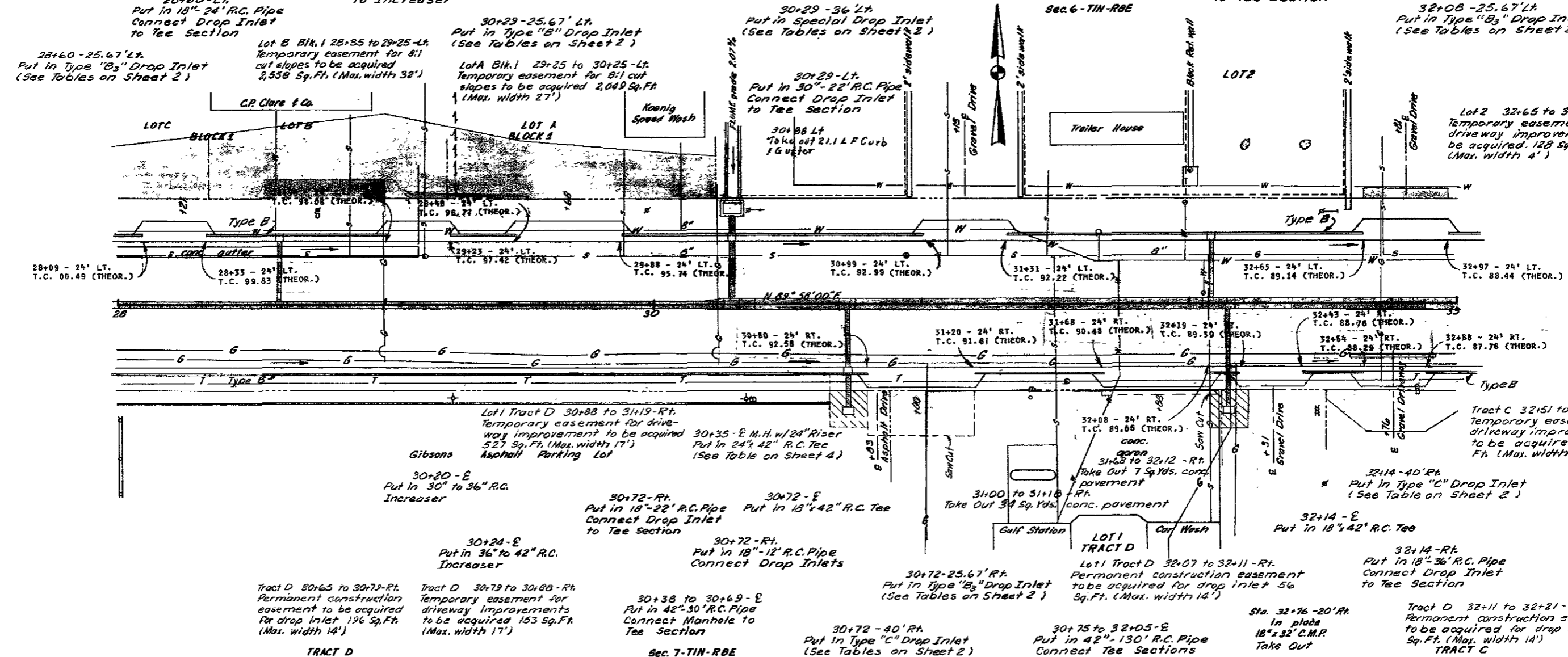
**SCALES**

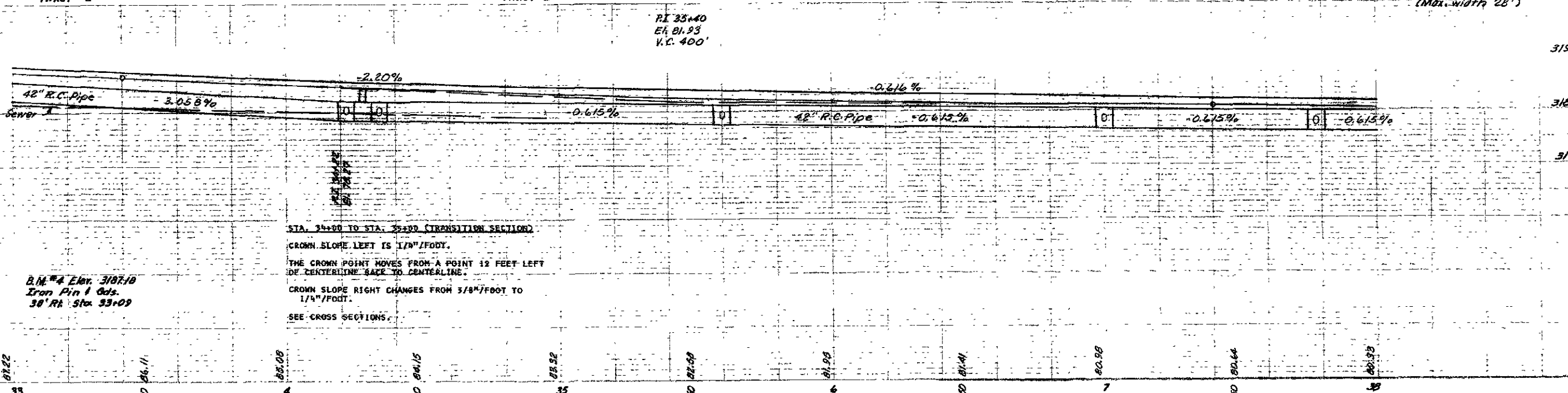
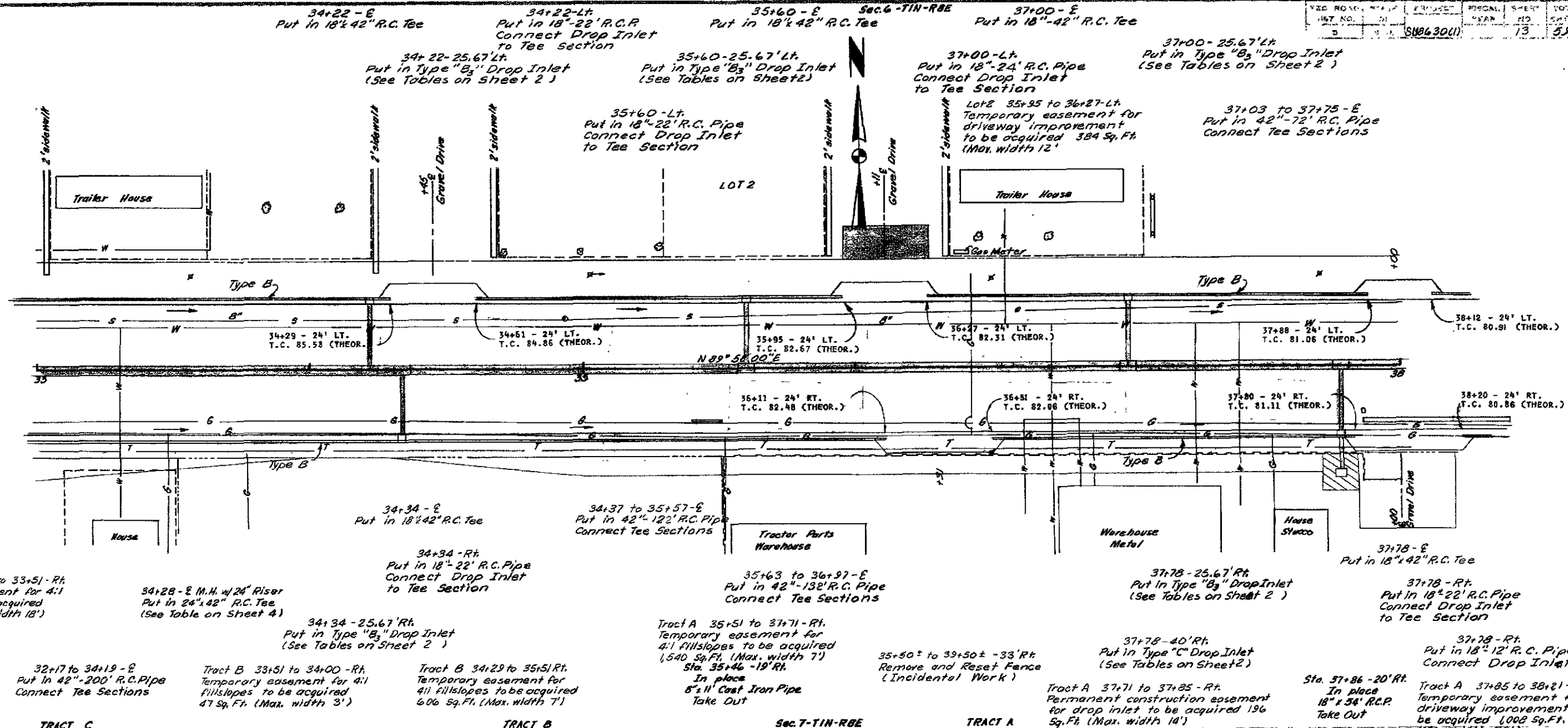
LAYOUT	1 INCH = 200 FT.
PLAN	1 INCH = 80 FT.
PROFILE	HORIZONTAL 1 INCH = 20 FT.
	VERTICAL 1 INCH = 10 FT.
CROSS SECTIONS	HORIZONTAL 1 INCH = 10 FT.
	VERTICAL 1 INCH = 5 FT.

GROSS LENGTH	4,352.60 FEET	0.824 MILES
LENGTH OF EXCEPTIONS	— FEET	— MILES
NET LENGTH	4,352.60 FEET	0.824 MILES
LENGTH OF GRADING	4,352.60 FEET	0.824 MILES
LENGTH OF BRIDGES	— FEET	— MILES

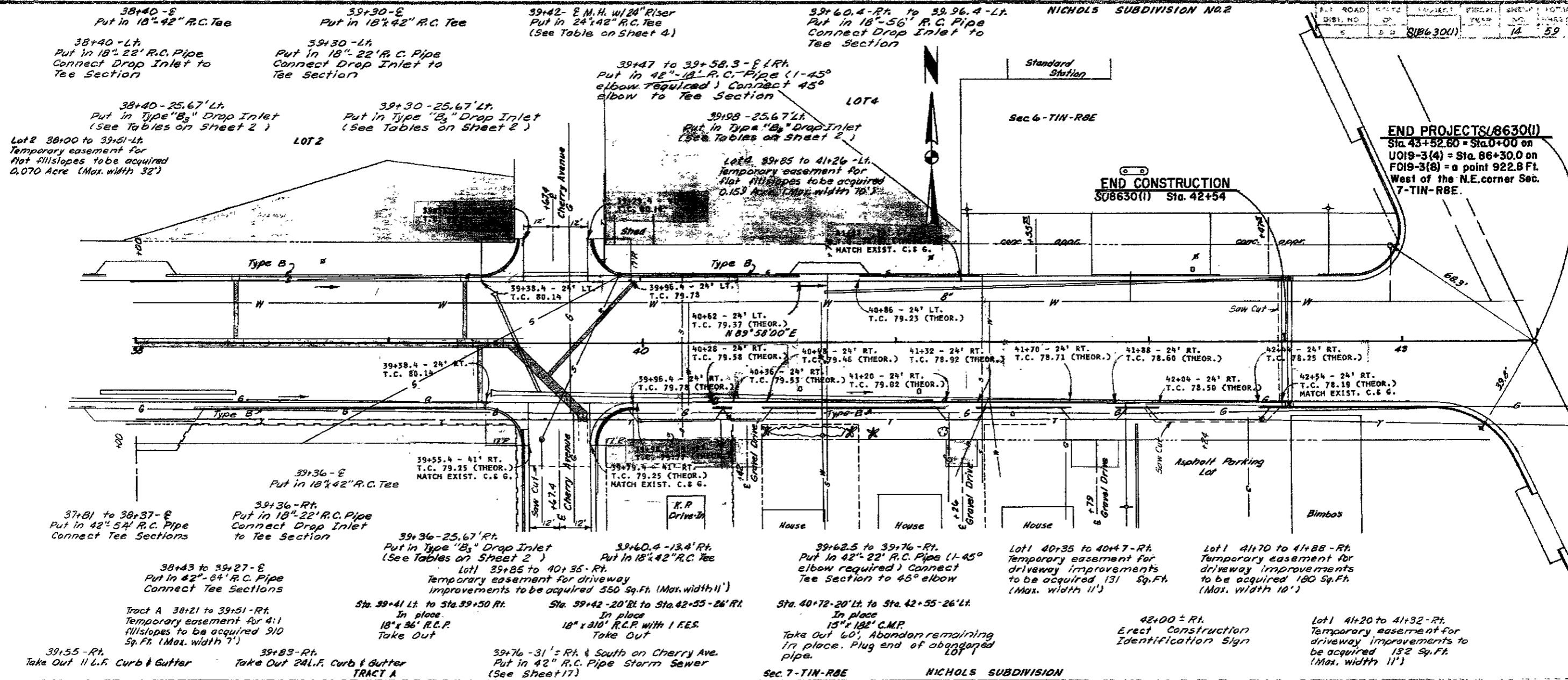


PER ROAD	SEAL	TOTAL
12	5.9	





NICHOLS SUBDIVISION NO.2



**END PROJECTS (8630(I))**  
 Sta. 43+52.80 = Sta. 0+00 on  
 UO19-3(4) = Sta. 86+30.0 on  
 FO19-3(8) = a point 922.8 Ft.  
 West of the N.E. corner Sec.  
 7-TIN-RBE.

**END CONSTRUCTION**  
 S08630(I) Sta. 42+54

Lot 2 38+00 to 39+51-Lt.  
 Temporary easement for  
 flat fill/slopes to be acquired  
 0.070 Acre (Max. width 32')

LOT 2

39+98 - 25.67' Lt.  
 Put in Type "B3" Drop Inlet  
 (See Tables on Sheet 2)

Lot 1 39+85 to 41+26 - Lt.  
 Temporary easement for  
 flat fill/slopes to be acquired  
 0.153 Acre (Max. width 18')

Sec 6-TIN-RBE

**END CONSTRUCTION**  
 S08630(I) Sta. 42+54

37+81 to 38+37-E  
 Put in 42" 54' R.C. Pipe  
 Connect Tee Sections

39+36-Rt.  
 Put in 18" 22' R.C. Pipe  
 Connect Drop Inlet  
 to Tee Section

39+36-25.67' Rt.  
 Put in Type "B3" Drop Inlet  
 (See Tables on Sheet 2)

39+60.4-13.4' Rt.  
 Put in 18" 42" R.C. Tee

39+62.5 to 39+76-Rt.  
 Put in 42" 22' R.C. Pipe (1-45°  
 elbow required) Connect  
 Tee Section to 45° elbow

Lot 1 40+35 to 40+47-Rt.  
 Temporary easement for  
 driveway improvements  
 to be acquired 131 Sq.Ft.  
 (Max. width 11')

Lot 1 41+70 to 41+88-Rt.  
 Temporary easement for  
 driveway improvements  
 to be acquired 180 Sq.Ft.  
 (Max. width 10')

38+43 to 39+27-E  
 Put in 42" 64' R.C. Pipe  
 Connect Tee Sections

Tract A 38+21 to 39+51-Rt.  
 Temporary easement for 4:1  
 fill/slopes to be acquired 910  
 Sq.Ft. (Max. width 7')

Sta. 39+41 Lt. to Sta. 39+50 Rt.  
 In place  
 18" x 36' R.C.P.  
 Take Out

Sta. 39+42 - 20' Rt. to Sta. 42+55 - 26' Rt.  
 In place  
 18" x 310' R.C.P. with 1 F.E.S.  
 Take Out

Sta. 40+72 - 20' Lt. to Sta. 42+55 - 26' Lt.  
 In place  
 15" x 182' C.M.P.  
 Take Out 60', Abandon remaining  
 in place. Plug end of abandoned  
 pipe.

42+00 ± Rt.  
 Erect Construction  
 Identification Sign

Lot 1 41+20 to 41+32-Rt.  
 Temporary easement for  
 driveway improvements  
 to be acquired 132 Sq.Ft.  
 (Max. width 11')

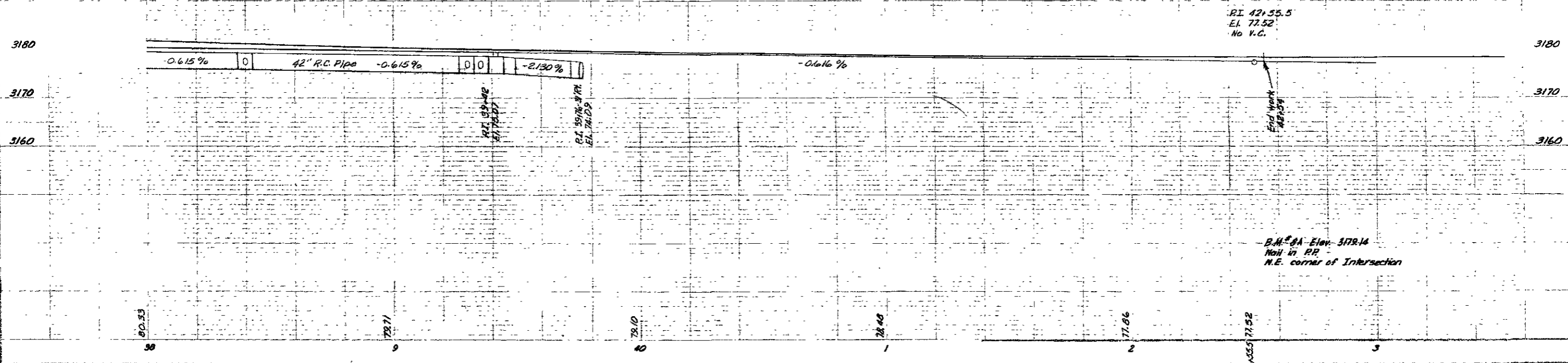
39+55-Rt.  
 Take Out 11 L.F. Curb & Gutter

39+83-Rt.  
 Take Out 24 L.F. Curb & Gutter  
 TRACT A

39+76 - 31' ± Rt. & South on Cherry Ave.  
 Put in 42" R.C. Pipe Storm Sewer  
 (See Sheet 17)

Sec. 7-TIN-RBE

NICHOLS SUBDIVISION



RI 42+55.5  
 El. 77.52  
 No V.C.

B.M. 8A Elev. 3179.14  
 Nail in RR  
 N.E. corner of Intersection