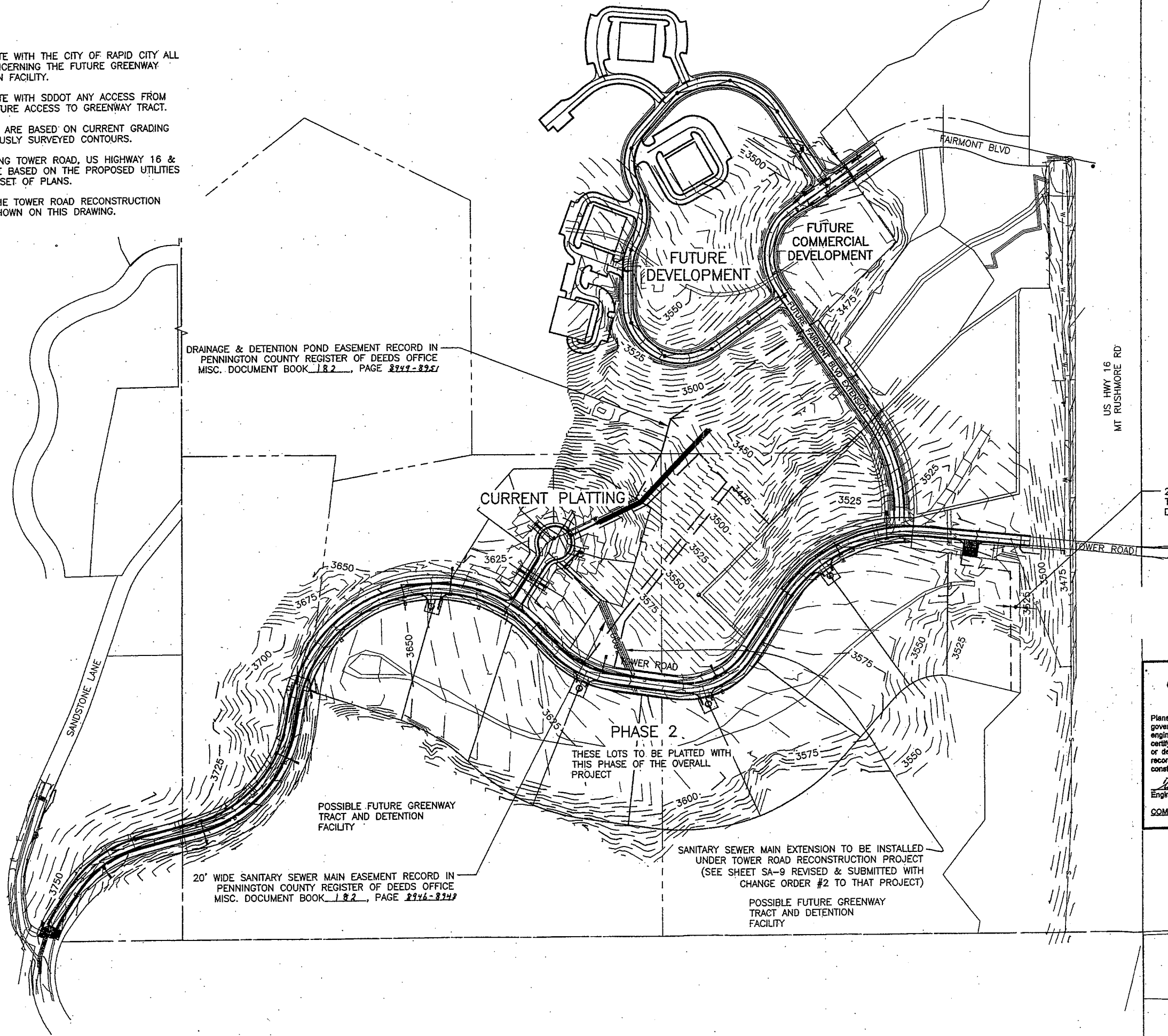


NOTES

1. OWNER TO COORDINATE WITH THE CITY OF RAPID CITY ALL FUTURE OPTIONS CONCERNING THE FUTURE GREENWAY TRACT AND DETENTION FACILITY.
2. OWNER TO COORDINATE WITH SDDOT ANY ACCESS FROM HIGHWAY 16 FOR FUTURE ACCESS TO GREENWAY TRACT.
3. CONTOUR ELEVATIONS ARE BASED ON CURRENT GRADING PROJECT AND PREVIOUSLY SURVEYED CONTOURS.
4. UTILITIES SHOWN ALONG TOWER ROAD, US HIGHWAY 16 & SANDSTONE LANE ARE BASED ON THE PROPOSED UTILITIES INCLUDED WITH THIS SET OF PLANS.
5. SITE GRADING FOR THE TOWER ROAD RECONSTRUCTION PROJECT ARE NOT SHOWN ON THIS DRAWING.



DRAINAGE & DETENTION POND EASEMENT RECORD IN PENNINGTON COUNTY REGISTER OF DEEDS OFFICE MISC. DOCUMENT BOOK 182, PAGE 2749-2757

20' WIDE SANITARY SEWER MAIN EASEMENT RECORD IN PENNINGTON COUNTY REGISTER OF DEEDS OFFICE MISC. DOCUMENT BOOK 182, PAGE 2746-2747

PHASE 2
THESE LOTS TO BE PLATTED WITH THIS PHASE OF THE OVERALL PROJECT

SANITARY SEWER MAIN EXTENSION TO BE INSTALLED UNDER TOWER ROAD RECONSTRUCTION PROJECT (SEE SHEET SA-9 REVISED & SUBMITTED WITH CHANGE ORDER #2 TO THAT PROJECT)

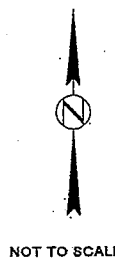
POSSIBLE FUTURE GREENWAY TRACT AND DETENTION FACILITY

CITY OF RAPID CITY
GROWTH MANAGEMENT DEPT.
DEVELOPMENT SERVICES

Plans are reviewed for general conformance with applicable governmental regulations, stipulations, design criteria and engineering standards. The City of Rapid City does not certify the suitability, adequacy or completeness of the plans or design, which are the responsibility of the engineer of record. All necessary permits shall be obtained prior to construction of the proposed public improvements.

Engineering Reviewer: *[Signature]* Date: 9-20-08
COMMENTS: DEV 08-930

REVISIONS



517 7th street rapid city sd 57701
ph: 605.342.9470 fax: 605.342.2377
www.4front.biz
ARCHITECTURE | ENGINEERING
GIS | SURVEYING



TOWER COURT
TOWER RD RECONSTRUCTION PROJECT
RAPID CITY, SOUTH DAKOTA

JOB NUMBER: 07.1373.001
DATE: 08/25/08

MASTER PLAN
SHEET C1.05