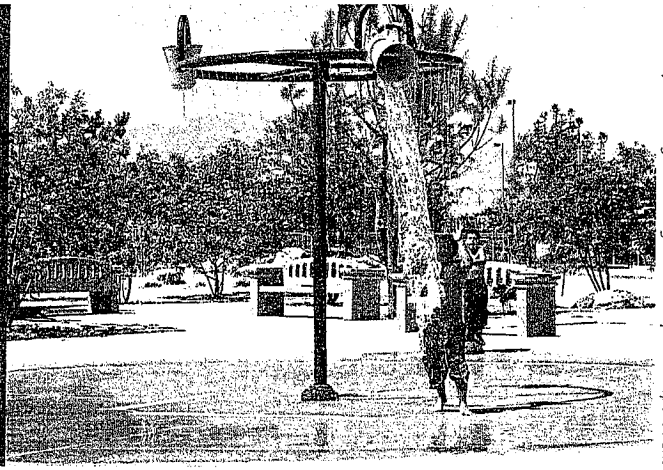


"ATTENDING THE CONFERENCE DEFINITELY
MAKES ME A BETTER PLANNER."

—Past conference attendee

MONDAY



© City of Las Vegas Planning and Development Department

MONDAY, APRIL 28

Opening Keynote (S700)

Monday, 8:30–10:15 a.m.

See page 47. **CM | 1**

Mandatory Training for Planning Commissioners (S404)

Monday, 10:30 a.m.–12:30 p.m.

Six states now have laws requiring planning officials to be trained. Why were the laws passed? Planners will learn about the legal and training requirements, which topics must be covered and which are optional, who can do the training, and if programs need to be certified. *Sponsor: Zoning Practice.* **CM | 2**

Essential Media Training for Planners (S674)

Monday, 10:30 a.m.–12:30 p.m.

When the media calls, are you prepared? Seasoned media pros give you the skills you need for interviews so that you or your boss stay on message. Different mock interview situations are demonstrated including policy controversies. Learn how APA's communications plan can help. **CM | 2**

The Job of the Planning Commissioner (S100)

Monday, 10:30 a.m.–noon

You've been appointed to the commission. Now what? Learn the duties and responsibilities of the planning commission and the zoning board of appeals. You need to prepare for meetings, so find out what to expect from your staff. Learn to read ordinances, understand the law, and where to turn for more training. Participate in public meetings that are responsible, fair, and legal.

BETTMAN SYMPOSIUM

A Conversation with Richard Babcock (S403)

Monday, 10:30–11:45 a.m.

Land-use lawyer Richard Babcock's contribution to the planning profession was his ability to think outside of the box. Experience Babcock's nonsense, irreverent observations about zoning and the land-use approval process—in his own words—in a video recorded more than 25 years ago, and hear from today's planning attorneys as they assess his contribution.

Tourism, Leisure, and Entertainment Track

Las Vegas is an American entertainment capital. How have tourism, leisure activities, and entertainment come together to form this city? You'll look at the phenomena of gambling and entertainment, but also examine how other communities are responding to leisure, tourism, and entertainment economies. Who provides the labor and how are laborers' needs accommodated? How is the economy sustained in a world where tastes in entertainment and leisure activities change rapidly?

Tapping Psychogeography to Support Planning Efforts (S417)

Monday, 10:30–11:45 a.m.
See page 15.

Gaming and Dollars for Cities (S424)

Monday, 1:00–2:15 p.m.
See page 15.

Competition for the Entertainment Visitor (S436)

Monday, 2:30–3:45 p.m.
See page 17.

Resort Hotel Development (S460)

Monday, 4:00–5:15 p.m.
See page 20.

Cultural Tourism in Alaska Native Communities (S468)

Tuesday, 9:30–10:45 a.m.
See page 22.

Gaming and the City (S490)

Tuesday, 11:00 a.m.–12:15 p.m.
See page 25.

British Casinos and Urban Regeneration (S506)

Tuesday, 1:30–2:45 p.m.
See page 26.

The Future of Urban Entertainment Districts (S543)

Tuesday, 3:00–4:15 p.m.
See page 31.

Betting on Redevelopment (S569)

Wednesday, 9:00–10:15 a.m.
See page 34.

Sex Businesses and Social Equity (S642)

Wednesday, 4:00–5:15 p.m.
See page 42.

Brownfields Redevelopment and Long-Term Stewardship (S405)

Monday, 10:30–11:45 a.m.

EPA has used roughly \$1.2 billion to assess, clean up, and support brownfield redevelopment over 10 years. Examine the roles of government agencies and other organizations in ensuring the health and safety of tenants, neighbors, and the environment on sites where reuse is restricted due to capped contamination or groundwater treatment. **CM | 1.25**

Form-Based Codes for Small Towns (S406)

Monday, 10:30–11:45 a.m.

Small towns have unique challenges for planning and coding. The process for creating a Form-Based Code can help planners protect existing assets while accommodating growth. Learn to document your small town to understand which assets are worth keeping while establishing a framework for future growth. **CM | 1.25**

Human Connections to Nature, Civic Engagement, and Household Choices (S407)

Monday, 10:30–11:45 a.m.

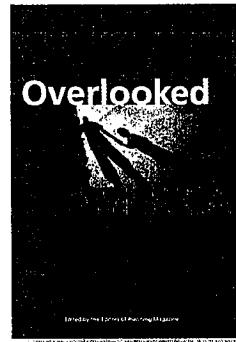
Find out how the public is greening communities from *JAPA* research: "Towards a Biophilic Urbanism," "Fostering Green Communities through Civic Engagement," "Information Into Action: Local Land Conservation Responses to Statewide Science-Based Biodiversity Information Outreach," "A Reality Check for Environmental Governance: Regulatory Promise, Inertia, and Conflict in the San Francisco Bay Area," and "Explaining the Geographic Distribution of Household Solar Energy Use in the United States." *Sponsor: Journal of the American Planning Association.* **CM | 1.25**

LOOK CLOSER

Overlooked America

Discover at-need populations hidden in plain sight.

*Available at
APA's Planningbooks.com*



Overlooked America (S596)

Monday, 10:30–11:45 a.m.

Planning magazine's *Overlooked America* project looks at social issues directly related to planning, from homelessness, rural poverty, and immigration to chronic unemployment and sex offender residency restrictions. *Sponsor: APA Planners Press.* **CM | 1.25**

Planning New Towns in the Desert (S412)

Monday, 10:30–11:45 a.m.

Designing new towns in a desert climate poses challenges for implementing sustainability principles. Explore these issues through two case studies of planning efforts in new desert communities. Panelists will discuss how a new desert town can implement smart growth principles while responding to its natural context. **CM | 1.25**

Planning for Green Infrastructure (S413)

Monday, 10:30–11:45 a.m.

Explore how Atlanta's Project Greenspace is creating an integrated green infrastructure system. Access, equity, and opportunity are key goals inspiring the acquisition, protection, and management of land resources to meet citizens' needs. Learn about strategies that empower the city and its partners to grow, manage, and build capacity for green infrastructure. **CM | 1.25**

Integrating Health into the Planning Process (S408)

Monday, 10:30–11:45 a.m.

Gain crucial insights on incorporating health into the planning process. Decisions made about the planned environment impact a wide range of public health concerns. Hear about collaborative tools that planners can use at the local level to develop healthy communities. **CM | 1.25**

Modal Choice in Transportation Decision Making (S409)

Monday, 10:30–11:45 a.m.

Gain a general understanding of the relationship between travel modes, the built environment, and travel behavior. Evaluate the elements relating to the performance of transportation modes and discover a generalized framework to prioritize transportation funding in cities and towns. **CM | 1.25**

Paying for Growth: An Overview (S410)

Monday, 10:30–11:45 a.m.

After many years of debate and the evolution of complex models of assessment, communities and regions are still challenged to find the best means to pay for their growth. This overview lays out the major approaches to financing growth and how these schemes and tools have worked over time. This session sets the framework for the track. **CM | 1.25**

Conservation Planning in the West (S414)

Monday, 10:30–11:45 a.m.

Open spaces in the West are increasingly threatened by population growth, resource extraction, and intense development. Robust and straightforward implementation strategies are needed to make landscape-scale conservation planning more commonplace and proactive. Join experts to discuss the next steps needed to address the conservation planning implementation crisis. **CM | 1.25**

Reconfiguring the Suburbs for Survival (S415)

Monday, 10:30–11:45 a.m.

Suburban versus urban is not a zero sum game. Both can survive and prosper, but only if unsustainable conventional suburban development—physically disconnected, car-dependent, nondiverse, and with low-efficiency infrastructure—is reconfigured over time into places "worth caring about." **CM | 1.25**

Reinventing Planning in Los Angeles (S416)

Monday, 10:30–11:45 a.m.

Los Angeles city and county have hired planning directors to increase the visibility and effectiveness of planning. Gain an overview of what went wrong with planning and development patterns in L.A. and contrast it with the administrative, managerial, and operational strategies and tactics being used to increase productivity and performance. **CM | 1.25**

Tapping Psychogeography to Support Planning Efforts (S417)

Monday, 10:30–11:45 a.m.

Psychogeography—which studies the interrelationships between people, place, and emotion—offers rich territory for planners wanting to influence behavior to support a plan and invest in community. Learn the importance of a constituency's emotional connections to place. Use these insights to motivate them to actions that support planning and economic development objectives. **CM | 1.25**

Proper Decision Making by Public Officials (S101)

Monday, 1:00–2:15 p.m.

Discover why adherence to procedural due process requirements helps ensure a fair and efficient hearing. Whether you're a planning commission member, elected official, or staff member who participates in hearings on land-use decisions, this session will train you to conduct a proper hearing.

Achieving Advocacy Success Through Coalitions (S418)

Monday, 1:00–2:15 p.m.

Working with a coalition of advocates can greatly increase the chances of successfully putting into place policies that have a positive impact in our communities. Learn to successfully work with like-minded partners in the private, nonprofit, and government sectors to achieve common policy goals. **CM | 1.25**

Addressing the Rising Tide of Foreclosures (S419)

Monday, 1:00–2:15 p.m.

Rust Belt cities have been dealing with the problems caused by high numbers of foreclosures and abandoned and vacant properties for years. Explore how these strategies can be adapted to assist other cities in the wake of the subprime lending debacle. Discuss foreclosure prevention, early warning information systems, land-banking, and redevelopment. **CM | 1.25**

Alternative Urban Forms and Environmental Impacts (S420)

Monday, 1:00–2:15 p.m.

Learn about the relationship between urban form and the environment in *JAPA* research: "New Evidence on the Relationship between Urban Form, Environmentalism and Residential and Transportation Energy Consumption," "Water Use Along an Urban to Suburban Gradient: Implications for Managing Natural Resources in a Rapidly Urbanizing World," "Urban Density: Water Quality Friend or Foe?" "Effects of High and Low Density Development Patterns on Hydrologic Conditions in a Watershed," "Think Bigger: Can Clustered Development Reduce Landscape Fragmentation and Habitat Loss?" and "Green Metropolis: Hype or Hope for Urban Development?" *Sponsor: Journal of the American Planning Association. CM | 1.25*

Attracting the Creative Class with Infrastructure (S421)

Monday, 1:00–2:15 p.m.

Although Houston and Atlanta are widely derided as sprawling, unappealing metropolitan regions, both cities continue to enjoy explosive economic growth. These cities have made massive investments in infrastructure while appealing to "creative" populations. Discover how Houston's METRORail system and Atlanta's Beltline project improve transportation while promoting the "street-level culture." **CM | 1.25**

BETTMAN SYMPOSIUM

Climate Change and the Law (S422)

Monday, 1:00–2:15 p.m.

California is a leader in climate change laws, serving as an early role model for the rest of the country. The climate change guru in the state's attorney general's office shares California's experience and explains why the planning profession plays a critical role in changing global warming status quo. **CM | 1.25**

Creating Sustainable Mixed Use Projects (S423)

Monday, 1:00–2:15 p.m.

Join experienced planning directors as they discuss which tools are best for turning plans for mixed use into reality, how to overcome public resistance, how to address roadblocks to mixed use projects, the role of private-public partnerships, the influence of successful mixed use projects on shaping future growth, and lessons learned. **CM | 1.25**

Gaming and Dollars for Cities (S424)

Monday, 1:00–2:15 p.m.

How does the gaming industry affect a city's economy and fiscal capacity? Learn how cities leverage these impacts for their economic development, and the unique planning challenges the gaming industry creates. Panelists include experts from industry, academia, and cities where gaming is an important economic sector, from Las Vegas to tribal territories. *Sponsor: Economic Development Division. CM | 1.25*

Regional Agencies in Multistate Environments (S425)

Monday, 1:00–2:15 p.m.

Regional planning organizations that work in a multistate environment have unique challenges in fulfilling their missions. Examine how planning organizations in three western states have succeeded in carrying out their responsibilities while being responsive to potentially conflicting interests at the local, state, and federal level. **CM | 1.25**

Impact Fees and Exactions (S426)

Monday, 1:00–2:15 p.m.

Impact fees and ad hoc development exactions are a means of financing public facilities necessitated by new development. What is the legal authority to impose legislatively adopted fees and exactions and how can they be used together? Examine the legal implications and pitfalls. Explore recent innovations and techniques for merging the use of impact fees and exactions. **CM | 1.25**

LEED for Neighborhood Development Pilot Projects (S427)

Monday, 1:00–2:15 p.m.

The LEED for Neighborhood Development rating system is being piloted with a group of real-life projects. Focus on two case studies of certified projects. Hear how smart growth, new urbanism, and green design principles overlap or contradict each other, and the relevance of these principles to planners. **CM | 1.25**

Making Infill Policies Work (S428)

Monday, 1:00–2:15 p.m.

Jurisdictions are revising land-use policies to encourage infill development, often to protect open space. These policies may be created with little understanding of the geographical and economic realities driving development patterns. Hear how GIS techniques and economic analysis tools are shaping infill policies and TDR programs. **CM | 1.25**

Parking as an Incentive for Commercial Revitalization (S429)

Monday, 1:00–2:15 p.m.

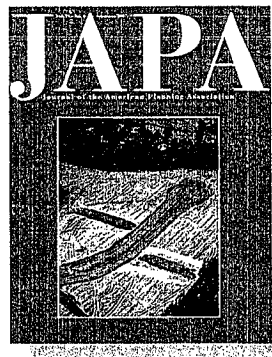
Find out how Los Angeles is facilitating revitalization of a pedestrian-scaled neighborhood through innovative parking solutions. This pilot program employs underutilized parking spaces in an inventive system of "parking credits." By encouraging efficient parking strategies, this program transforms declining commercial areas into vibrant, pedestrian-serving main streets. **CM | 1.25**

BIG IDEAS

JAPA

Big ideas in planning for more than 70 years

Subscribe at www.planning.org/japa.



Partnerships and Structure for Training Planning Officials (S430)

Monday, 1:00–2:15 p.m.

Most training programs for officials are done by partnership groups. Find out how universities partner with other organizations. Explore the role each plays. Do universities provide a statewide system that planners can tap into? How are these programs funded and how long-lived are they? **CM | 1.25**

Quality Input, Dramatic Results (S431)

Monday, 1:00–2:15 p.m.

This session will prepare you to successfully facilitate your next public workshop. Join professionals in workshop facilitation and planners who have led successful community planning workshops. Learn to give your workshops more energy, creative input, and better documentation. **CM | 1.25**

Transforming Landfill to Landscape (S432)

Monday, 1:00–2:15 p.m.

Learn how New York City's government is embracing the planning process integral to turning Fresh Kills Landfill, one of the world's largest landfills, into a 2,200-acre park. Hear about the challenges of interagency coordination, design, and phasing around ongoing landfill closure, and environmental review. **CM | 1.25**

The Role of Comprehensive and Other Plans (S102)

Monday, 2:30–3:45 p.m.

All planning is based on the plan. Learn about the role and composition of the comprehensive plan. State requirements vary from place to place, so find out what the legal foundation is for various plans. In addition, you need to know about special area or district plans and special topic plans. Local plans should coordinate with regional ones and work in tandem with federal agency plans. Finally, learn how plans are implemented. **CM | 1.25**

A Healthy Perspective on Transportation (S433)

Monday, 2:30–3:45 p.m.

How do you create an efficient and health-promoting transportation system? Who should be at the table to answer this question? Join a city planning director, a consultant, a public health official, and university researchers as they illustrate unique tools and approaches to creating context-sensitive transportation solutions that support community health. **CM | 1.25**

Bargaining for Development: Development and Annexation Agreements (S434)

Monday, 2:30–3:45 p.m.

Hear an overview of the major problems faced by government and landowners solved by the development agreement. Learn the benefits of providing government control over development and the ability to impose land development conditions (exactions, dedications, and impact fees) that might otherwise not be legally authorized. Examine a checklist of issues and provisions that can be addressed in the agreement. **CM | 1.25**

BETTMAN SYMPOSIUM

Private Property Rights, Today and Tomorrow (S435)

Monday, 2:30–3:45 p.m.

There's a conflict between the private landowner's right to develop property and the role of government when regulations decrease property values. Are there deeper, broader undercurrents that could lead to a much different understanding of private property ownership? This provocative discussion between researchers and authors Eric Freyfogle and Harvey Jacobs reframes the debate in new ways. **CM | 1.25**

Habits of Effective Planners (S437)

Monday, 2:30–3:45 p.m.

Eying a position in mid-level or senior management? Considering a move to private consulting? The key to a successful career is finding your zone. Hear perspectives from practicing consultants, seasoned planners, and public agency leaders on how to keep your career on track. **CM | 1.25**

Competition for the Entertainment Visitor (S436)

Monday, 2:30–3:45 p.m.

Explore the challenges planners in entertainment-oriented communities face. Consultants working on critical projects in Atlantic City and Orlando will discuss their experiences and lessons learned, and provide planning strategies for better-balanced development and strategies that could be adopted in other places. **CM | 1.25**

Inner City Regeneration, Shrinking Cities, and Greening of Existing Urban Development (S438)

Monday, 2:30–3:45 p.m.

Cities are evolving, and researchers explore the phenomena in *JAPA* papers: "When You Can't Build Your Way Out of the Problem: Evaluating Greenhouse Gas Reduction Programs for Suburban Activity Centers," "Sustainable Urban Land Management: An International Planning and Policy Perspective," "A Green Infrastructure Strategy to Right Size America's Shrinking Cities," "The Role of Urban Agriculture in Enhancing Green Communities: Experiences from Portland, Oregon and Vancouver, British Columbia," "Strategic Effectiveness of Farmland Preservation for Managing Urban Growth," and "Low Impact Development Integration with Smart Growth Principles." *Sponsor: Journal of the American Planning Association.*
CM | 1.25

Integrating Clean Energy into Planning (S439)

Monday, 2:30–3:45 p.m.

Local governments across the country have taken up the challenge to reduce greenhouse gas emissions and replace fossil fuels with clean energy. Consider ways in which climate change and energy can become part of community planning processes and smart growth discussions. **CM | 1.25**

Making Density Work (S440)

Monday, 2:30–3:45 p.m.

Density is central to creating mixed income neighborhoods, vital main streets, and smaller carbon footprints. Learn to take advantage of strengthening urban markets to make density more financially feasible. Examine emerging higher density planning and design concepts that expand housing and mobility choices, support mixed use, and enhance the sustainability benefits of development. **CM | 1.25**

Market-Tested Zoning Tools for Mixed Use (S441)

Monday, 2:30–3:45 p.m.

Learn how Dallas and Prince George's County, Maryland, are amending development codes to encourage mixed use, walkable neighborhoods. Hear about their experiences crafting targeted amendments to existing development codes to make desirable mixed use developments easier. Explore innovative techniques to test the efficacy of zoning tools on hypothetical developments in real contexts. **CM | 1.25**

Build your own conference to gain the skills employers are looking for, get ready for the AICP exam, focus on a planning specialty, or network with peers from around the country. Highlighted here are the activities created exclusively for new professionals.

A CONFERENCE FOR NEW PROFESSIONALS

SESSION

The New Generation of Planners (S496)

Tuesday, 11:00 a.m.–12:15 p.m.

See page 25.

FACILITATED DISCUSSIONS

Climbing the Career Ladder (S802)

Monday, 4:00–5:15 p.m.

See page 67.

Starting Your Own Firm (S806)

Tuesday, 4:30–5:45 p.m.

See page 67.

SAMPLE SCHEDULE ONLINE

Wondering how to make the most of the conference? Go to www.planning.org/nationalconference to see the conference schedule we've designed especially for new professionals. Or use the tools to design your own.

A SPECIAL LOW RATE

We strive to keep the conference affordable for new professionals. If you're an APA new professional member, you'll pay one of the lowest registration fees. (Please note: You cannot join APA as a new professional member. Student members who have maintained their membership for three consecutive years are invited to become new professional members as part of APA's Five-Year Early Career Program.)

Omaha by Design (S442)

Monday, 2:30–3:45 p.m.

Omaha, Nebraska, has added an urban design element covering the whole city to its master plan. Learn how the city, in order to implement this urban design plan, created a comprehensive series of zoning and subdivision amendments that received unanimous city council support. **CM | 1.25**

Regional Design in the Puget Sound Region (S443)

Monday, 2:30–3:45 p.m.

Learn how a group of volunteers developed design tools to address cross-boundary infrastructure and ecological systems, protect treasured landscapes, translate large scale growth patterns into desirable models, and enhance regional identity. **CM | 1.25**

Supersized Master Planned Communities (S444)

Monday, 2:30–3:45 p.m.

Explore the role of local government in creating cities on the fringe, from long-range planning and securing public amenities through subdivision processing and providing municipal services. **CM | 1.25**

Start Planning for 2100 (S445)

Monday, 2:30–3:45 p.m.

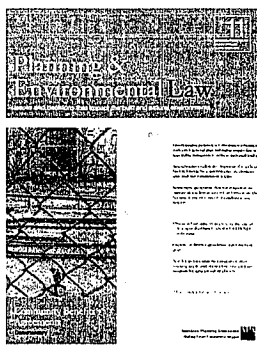
Global warming, water, and energy depletion—sustainable development does little to address the immense problems of the next 100 years. A one-meter rise in sea level will have devastating effects. Panelists suggest strategies that need to be implemented today. **CM | 1.25**

KNOW THE LAW

Planning & Environmental Law

Judicial decisions and legislation that affect your work

Subscribe at www.planning.org/pel.



Will They Come If You Build It? (S446)

Monday, 2:30–3:45 p.m.

Can you forecast the indirect land-use impacts of a transportation project so that its anticipated relief is credible? Do pitched battles over supposed benefits of highways paralyze your agency? Authors of a new report show how to select the best approach. **CM | 1.25**

Partnerships for Training Between Organizations (S447)

Monday, 2:30–3:45 p.m.

Many APA chapters want to train planning commissioners and have joined ranks with state agencies and allied associations to create ongoing partnerships. Learn more about the end results for training. **CM | 1.25**

A Bioclimatic Systems Approach to Development (S448)

Monday, 4:00–5:15 p.m.

Learn how the City of Desert Hot Springs, California, has taken a bioclimatic systems approach—working with the environment to save water, energy, and scarce or fragile natural resources—to integrated land planning, architecture, landscape architecture, and lighting. Hear critiques of the case study and discuss pragmatic implementation tools. **CM | 1.25**

BETTMAN SYMPOSIUM

APA in the Courts (S449)

Monday, 4:00–5:15 p.m.

APA continues to be a strong voice for the planning profession in state and federal courts. Get the annual update on the most important cases in which APA has filed amicus briefs during the past year, along with the arguments APA made and the courts' decisions. **CM | 1.25**

Congestion Pricing (S450)

Monday, 4:00–5:15 p.m.

Access and circulation fees can reduce congestion, improve travel times and average speeds, reduce pollution, enhance traffic efficiency, and be an important source of revenue. Learn how congestion pricing has worked around the world, and where it is proposed in the United States. *Sponsor: Transportation Planning Division.* **CM | 1.25**

Technology as a Tool for Planning (S461)

Monday, 4:00–5:15 p.m.

Learn to use information technology to identify the issues and impacts relevant to your community and turn them into strengths and opportunities in this information society. **CM | 1.25**

Creating Curriculum (S451)

Monday, 4:00–5:15 p.m.

How do you create a training curriculum for planning commissioners and officials? What absolutely needs to be covered and what can be optional? Learn about efforts to create standardized curriculum and explore various medium of delivery. What works well and leads to blind alleys? **CM | 1.25**

Energy Planning (S452)

Monday, 4:00–5:15 p.m.

As planners begin to address climate change they must also be ready to engage in energy planning. Learn about three different municipal approaches to energy planning: a stand-alone community plan; a plan that connects energy use with land use; and an energy plan within the context of a comprehensive plan. *Sponsor: Environment, Natural Resources, and Energy Division.* **CM | 1.25**

Gunnison-Style Transfer of Development Rights (S453)

Monday, 4:00–5:15 p.m.

Gunnison County, Colorado, has developed a new form of TDR, removing roadblocks that keep communities from adopting traditional programs. This innovation requires developers to apply a percentage of the value generated by subdivision approval toward preservation. Find out if Gunnison-style TDR could work for you. **CM | 1.25**

Measuring City Performance and Quality of Life (S454)

Monday, 4:00–5:15 p.m.

Explore a World Bank initiative to develop indicators that measure city performance and quality of life in a standardized format across the globe. The Internet-based system allows cross-city comparisons and third-party verification, and enables cities to share best practices and to learn from each other. **CM | 1.25**

New Urbanist Development in the Sprawling Desert (S455)

Monday, 4:00–5:15 p.m.

How well are desert communities reflecting the principles and goals of new urbanism? How is the market responding given the slowdown in housing sales? Experiences from the development community and local jurisdictions in Phoenix will provide an understanding of how neotraditional communities are faring in the fast-growing desert southwest. **CM | 1.25**

Overcoming Obstacles to Metropolitan Downtown Revitalization (S456)

Monday, 4:00–5:15 p.m.

What do you do when your urban core, the center of your bustling city, is lackluster? Learn how downtown Los Angeles has used relaxed standards and zoning incentives to revamp public and private design to court investment. Discover how planners have coaxed affordable housing from developers. **CM | 1.25**

Planning Directors in the Hot Seat (S457)

Monday, 4:00–5:15 p.m.

Planning directors in the Las Vegas region have a special role in addressing community challenges and opportunities. Hear from some of the area's most innovative planning directors as they focus on their successes and failures and the practical issues facing them. *Sponsors: American Planning Association and Lincoln Institute of Land Policy.* **CM | 1.25**

Plans and Policies for Advancing Green Communities (S458)

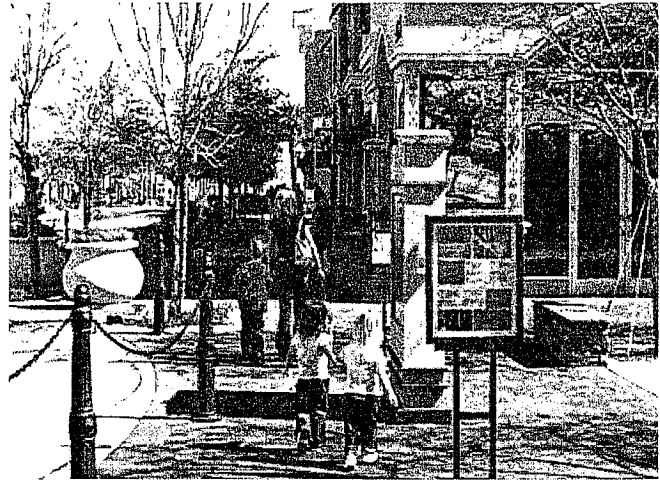
Monday, 4:00–5:15 p.m.

Hear current research on climate change and sustainability from JAPA papers: "State and Municipal Climate Change Plans: The First Generation," "How Can Electric Utilities Increase Sales of Renewable Energy: Insights into Austin Energy's GreenChoice Program?" "Water-Sensitive Planning: Towards a New Transdisciplinary Field," "Policy Indicator for Green Communities," "Green Building Rating Systems: Uses, Abuses, and a Modest Call for Change," and "The Prognosis for 'Green Sanitary Sewers in Urban Areas.'" *Sponsor: Journal of the American Planning Association.* **CM | 1.25**

Regional Visioning's Yesterday, Today, and Tomorrow (S459)

Monday, 4:00–5:15 p.m.

This marks the 10th anniversary of Envision Utah, one of the country's first comprehensive regional visioning efforts. Discover the evolution of regional visioning around the country and discuss the reasons for success. Understand the impacts, what could have been done better, and what strategies hold promise for the future. **CM | 1.25**



© City of Las Vegas Planning and Development Department

Partnerships and

Intergovernmental Relations Track

How have communities worked with their neighbors to address issues of water, land management and use, and differing systems of governance? Explore innovations in partnerships, regional planning, and cross-jurisdiction relations.

Achieving Advocacy Success Through Coalitions (S418)

Monday, 1:00–2:15 p.m.
See page 15.

Four Mile Run Restoration Master Plan (S488)

Tuesday, 11:00 a.m.–12:15 p.m.
See page 25.

Ways for Regional Governments to Target Investments (S547)

Tuesday, 3:00–4:15 p.m.
See page 31.

Metropolitan Urban Development in Mexico (S614)

Wednesday, 2:30–3:45 p.m.
See page 40.

Public-Private Partnerships for Big Box Retail (S657)

Thursday, 8:00–9:15 a.m.
See page 45.

Build your own conference to see how the theories you learn in the classroom are applied in the field, investigate specialties, and network with working professionals and potential employers.

A CONFERENCE FOR STUDENTS

WELCOME

First-Timers Orientation (S401)

Sunday, 2:00–3:00 p.m.
See page 9.

First-Timers Mixer (S673)

Sunday, 2:00–3:00 p.m.
See page 9.

NETWORKING

Student Reception (P003)

Sunday, 7:00–10:00 p.m.

Don't forget to pack your lederhosen. This year's student reception will be in the biergarten of the Hofbrauhaus Las Vegas, a faithful recreation of the famous Hofbrauhaus in Munich. Sample an authentic German meal and some authentic German beer (brewed with a recipe handed down from Wilhelm V, the Duke of Bavaria, 400 years ago). Admission includes one meal ticket and one drink ticket. You must be 21 to attend. No refunds or exchanges after March 27.

Student Exchange and Student Representative Council (SRC) Meeting (X024)

Monday, 4:00–6:30 p.m.

All students are invited. Join students from around the country to pose your questions, exchange ideas, and vote for your 2008–09 regional leader.

FACILITATED DISCUSSIONS

A Career in Advocacy (S800)

Monday, 1:00–2:15 p.m.
See page 67.

A Career in Community Development or Neighborhood Planning (S808)

Wednesday, 9:00–10:15 a.m.
See page 67.

Planning High Growth Areas (S812)

Wednesday, 2:30–3:45 p.m.
See page 67.

MOBILE WORKSHOP

Journey from Student to Planning Professional (W033)

Tuesday, 9:00 a.m.–noon
See page 62.

SESSION

Professional Development: What You Can Do Now! (S507)

Tuesday, 1:30–2:45 p.m.
See page 26.

STUDENT HOSPITALITY SUITE

Stop by the hospitality suite to meet with other students or just take a break. Facilitated discussions for students will also be held in the suite.

JOB CONNECTION

Be sure to visit the conference website to learn about interviewing for jobs at the conference. You need to prepare ahead of time to participate in this program, so visit the website at www.planning.org/national-conference for complete instructions. Job Connection is located in the Planning Expo, which is open Sunday through Wednesday.

WE'LL REIMBURSE YOU!

We try to keep the conference affordable for students. If you're an APA student member and have registered for the conference, you'll pay the lowest possible registration fee. And, if you volunteer to work at the conference, we'll reimburse you \$100—the exact amount of the early registration fee for student members. Deadline: March 11. **Volunteer spots are limited, so sign up early.** Details at: www.planning.org/nationalconference.

Resort Hotel Development (S460)

Monday, 4:00–5:15 p.m.

Unincorporated Clark County is home to the world-renowned Las Vegas Strip. New development in the resort corridor continues at a rapid pace. To maintain levels of service, Clark County conditions large projects with development agreements. Learn how planning staff streamlines the process by collaborative agency review and negotiates the development agreement. **CM | 1.25**

Turning Around a Dysfunctional Planning Office (S462)

Monday, 4:00–5:15 p.m.

This real-life scenario from Atlanta demonstrates how to transform a dysfunctional planning office into an efficient, well-respected one. Using testimonials from employees and stories of management struggles, delve into the issues of problem employees, modifying processes, and maintaining and improving employee morale. Take home strategies and solutions applicable to any size office. **CM | 1.25**

Workforce or Mandatory Housing (S463)

Monday, 4:00–5:15 p.m.

Central to the issue of paying for growth is the provision of adequate affordable housing. Should developers be provided with incentives or should they be required to provide affordable housing? Learn about the legal foundation for these programs and which approach works best in what circumstance. How common are these programs? **CM | 1.25**



"YEAR-IN AND YEAR-OUT, APA HAS ONE OF THE BEST PUBLIC-SECTOR CONFERENCES AROUND."

—Past conference attendee

TUESDAY

Health and Communities Track

Planning is increasingly embracing partnerships with health professionals in addressing a wide range of health issues. The connection between how we plan and our nation's health has been vigorously studied over the past six years. Sessions address what we have learned from these studies and how creating physically active and universally accessible communities contributes to the health and welfare of all residents.

Integrating Health into the Planning Process (S408)

Monday, 10:30–11:45 a.m.
See page 14.

Food System Planning and Healthy Communities (S470)

Tuesday, 11:00 a.m.–12:15 p.m.
See page 24.

Community Design in an Aging Society (S509)

Tuesday, 1:30–2:45 p.m.
See page 26.

The 21st Century Community (S583)

Wednesday, 9:00–10:15 a.m.
See page 36.

Offsetting a Lack of Grocery Chain Access (S595)

Wednesday, 10:30–11:45 a.m.
See page 38.

Aging in Place (S628)

Wednesday, 2:30–3:45 p.m.
See page 41.

Built Environments for Active Living Abroad (S627)

Wednesday, 4:00–5:15 p.m.
See page 41.

Health Issues in the General Plan (S651)

Thursday, 8:00–9:15 a.m.
See page 45.

TUESDAY, APRIL 29

Policy Keynote (S701)

Tuesday, 8:15–9:15 a.m.

See page 47. **CM | 1.25**

Ethics for Planning Commissions and Officials (S103)

Tuesday, 9:30–10:45 a.m.

Ethical decision making is the bedrock of public trust and credibility. Find out what the required standards are in your community and examine how some communities use advisory standards. No matter how large or small your community, the planning commission should be guided by administrative procedures. This session will include presentations, scenarios, and discussion.

America at One Billion (S464)

Tuesday, 9:30–10:45 a.m.

The United States is changing rapidly as its population grows and new residents establish new lives. Every planner needs to know where we are headed. You will learn from two leading researchers about population trends and their impact on planning. **CM | 1.25**

Are Your Environmental Ordinances Working? (S465)

(S465)

Tuesday, 9:30–10:45 a.m.

Years or decades after adopting environmental regulations, how do you determine if they are being successfully implemented? Clark County started a Mitigation Monitoring Program aimed at evaluating mitigation success instead of permit compliance. The results lead to ongoing process improvements, increased accountability, and adaptive management techniques which are locally relevant. **CM | 1.25**

Build a Local Government GIS (S466)

Tuesday, 9:30–10:45 a.m.

Limited budgets do not preclude GIS programs. Hear economical options for hardware including plotters and GPS units. Explore essential and desirable software options. Find sources for fundamental data layers available for free and learn ways to create other critical layers at minimal cost. Start and grow your own program. **CM | 1.25**

Cross-Media Citizen Engagement (S467)

Tuesday, 9:30–10:45 a.m.

Planners are being offered a growing range of communication channels to involve citizens in visioning and scenario-building efforts. Explore the strengths and limitations of various tools and frameworks and experiences of how traditional and new ways of citizen participation can fit together and strengthen public processes.

CM | 1.25

Cultural Tourism in Alaska Native Communities (S468)

Tuesday, 9:30–10:45 a.m.

Examine three models of cultural tourism development in remote areas of Alaska. Featuring predominantly Alaska Native populations and transitional economies, these regions are working to develop culturally appropriate tourism. Learn how indigenous communities are dictating the style and character of their development and adapting tourism strategies to fit traditional lifestyles and values.

CM | 1.25

Agency Planning for Federal Lands (S469)

Tuesday, 9:30–10:45 a.m.

Federal planners manage lands, natural and cultural resources, and implement land-use policies that affect all Americans. Hear representatives of federal agencies that plan for and manage federal lands explain the often competing interests for these lands, and how planners try to balance uses and priorities for the public benefit. *Sponsor: Federal Planning Division.*

CM | 1.25

From Competition to Construction (S471)

Tuesday, 9:30–10:45 a.m.

Learn how to improve the design quality of infill lots in established neighborhoods. Examine how Portland, Oregon, used a design competition as a springboard to make architecturally compelling, permit-ready plans available to the public.

CM | 1.25

Latino USA: Reshaping American Suburbs (S472)

Tuesday, 9:30–10:45 a.m.

“Hispanization” of the American suburbs is providing new challenges and opportunities for neighborhood and transportation planners. Demographic changes also create new opportunities for innovation while balancing neighborhood safety and community character. Examine national trends and best practices while reviewing ordinances and neighborhood plans responding to this kind of demographic transformation.

Sponsor: Latinos and Planning Division. **CM | 1.25**

Leadership (S473)

Tuesday, 9:30–10:45 a.m.

Explore ways to develop the leadership skills required to successfully advocate for ideas that may be ethically and professionally right, but politically unpopular—and still remain effective. Join a panel of Fellows of the American Institute of Certified Planners as it engages the audience in a discussion about planning leadership.

CM | 1.25

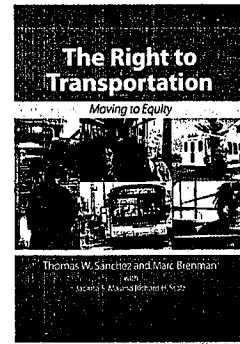
EQUITY

The Right to Transportation

Foster fair transportation.

Available at

APA's Planningbooks.com



Planning for Family-Friendly Cities (S474)

Tuesday, 9:30–10:45 a.m.

How can planners strengthen social and physical infrastructure to create family-friendly cities? Explore answers to this question and others during an interactive panel discussion. Hear the results of an APA survey benchmarking current practice, and learn about best practices from planners at the forefront of the family-friendly cities movement.

CM | 1.25

The Right to Transportation (S475)

Tuesday, 9:30–10:45 a.m.

Disadvantaged groups—people living in poverty, racial minorities, the physically disabled—often have a hard time getting where they need to go. Learn about the causes and consequences of inequity in transportation and find out how planners can help communities move to equity.

CM | 1.25

Planning for Urban and Community Forestry (S476)

Tuesday, 9:30–10:45 a.m.

Discover what APA has learned about how to make a difference in advancing urban forestry. Topics include management practices that promote green infrastructure, successful practices to support urban forestry, how allied professions and planners can best support each other, and the challenges and opportunities that lie ahead in implementing solutions.

CM | 1.25

Redeveloping the Brownest of the Brownfields (S477)

Tuesday, 9:30–10:45 a.m.

Local communities have the largest stake in identifying appropriate cleanup measures for superfund and brownfield sites, particularly as the EPA promotes redevelopment as a long-term remedy. Yet local planners often are excluded from the process. Learn the importance of early and active planner involvement.

CM | 1.25

Revitalizing New Cassel (S478)

Tuesday, 9:30–10:45 a.m.

The New Cassel, New York, story is that of the convergence of preparation, cooperation, and opportunity—the best of government, nonprofit, community, and the private sector focused on revitalizing a one-mile stretch in one of the oldest African American communities on Long Island. **CM | 1.25**

Sustainable Transportation (S479)

Tuesday, 9:30–10:45 a.m.

Las Vegas Valley governments are working to link people, jobs, and entertainment venues across the region. Explore innovative land-use strategies intended to promote the implementation of a visionary regional fixed guideway system. Panelists will present an overview of transportation and land-use planning efforts in their communities. **CM | 1.25**

Two Responses to Climate Change (S480)

Tuesday, 9:30–10:45 a.m.

Examine multiple approaches for addressing climate change: reducing greenhouse gas emissions through mitigation, and planning for the effects of climate change through adaptive planning. Discuss alternatives for integration so your local government is able to fully address the issue of climate change in a coordinated, comprehensive manner. **CM | 1.25**

Current and Future Urbanization in India (S481)

Tuesday, 9:30–10:45 a.m.

India, which is 30 percent urbanized, is changing fast. The country's cities may need to accommodate 300 million new residents by 2050. Hear why top-down planning and bureaucracies have so far failed to respond to this flood of new residents and explore emerging ways to provide housing, employment, and services. **CM | 1.25**

Lessons from Modern Large-Scale Development (S501)

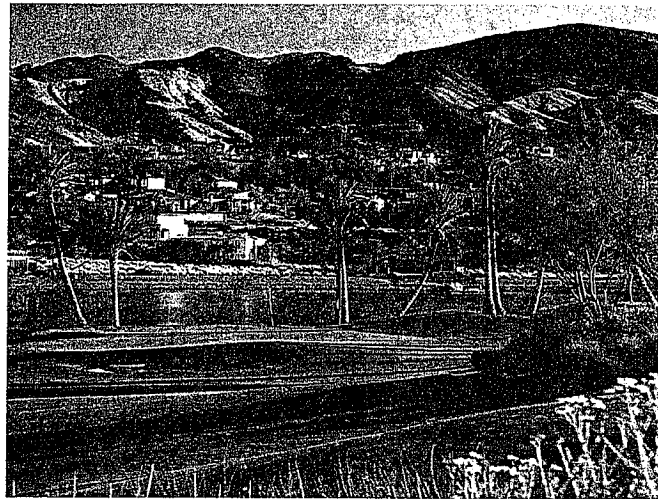
Tuesday, 9:30–10:45 a.m.

Developers across the country are building larger residential and mixed use developments. Learn about the challenges of large-scale development and community responses to using planned unit development regulations, and examine how planned developments can overuse flexible planning—or pair it with techniques like form-based codes. *Sponsor: Planning and Law Division.* **CM | 1.25**

Using Zoning to Create a Vibrant Downtown (S482)

Tuesday, 9:30–10:45 a.m.

Zoning regulations can be a powerful tool to create a balanced mix of land uses downtown. Local governments recognize zoning as a vital component in creating and maintaining a vibrant and sustainable downtown. Explore these emerging methods, using case studies that illuminate what works, what may not, and why. **CM | 1.25**



© City of Las Vegas Planning and Development Department

Master Planned Communities Track

Innovative master planned communities are a major factor in the growth of suburban communities across the county. Explore how they are designed to integrate retail and employment centers. Hear how these developments respond to the market as well as to the environment. Sessions discuss how planning guidelines and review standards are changing in response to these large projects. From housing issues to the larger domain of planning, learn what's new and what's working.

Supersized Master Planned Communities (S444)

Monday, 2:30–3:45 p.m.
See page 18.

New Urbanist Development in the Sprawling Desert (S455)

Monday, 4:00–5:15 p.m.
See page 19.

Lessons from Modern Large-Scale Development (S501)

Tuesday, 9:30–10:45 a.m.
See page 23.

Master Plans for Tomorrow (S495)

Tuesday, 11:00 a.m.–12:15 p.m.
See page 25.

Florida Master Planning (S512)

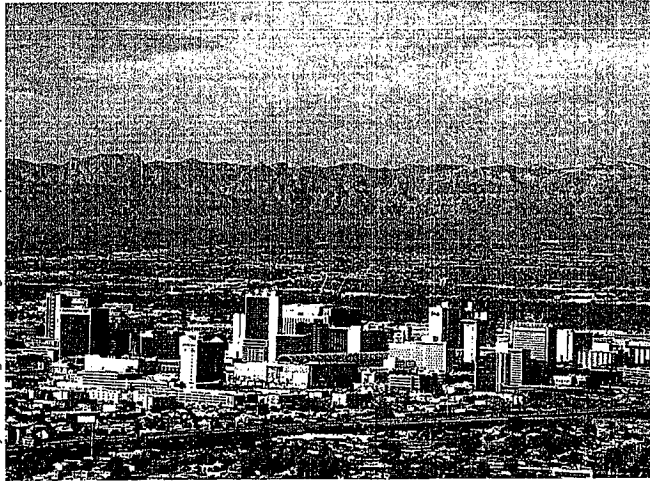
Tuesday, 1:30–2:45 p.m.
See page 27.

New Urbanism vs. True Urbanism (S536)

Tuesday, 3:00–4:15 p.m.
See page 30.

The Spring Mountain Master Planned Community (S602)

Wednesday, 10:30–11:45 a.m.
See page 38.



Paying for Growth Track

Are communities staying ahead of the curve or just playing catch-up when it comes to growth? This track examines common funding tools such as impact and development agreements and tax break subsidies for development. Look deeper into policy issues such as setting limits on the use of scarce resources. Address a critical question—is there an absolute limit to growth?

TRAINING WORKSHOP

Fiscal Impact Assessment (S017)

Sunday, 1:00–5:00 p.m.
See page 55.

Paying for Growth: An Overview (S410)

Monday, 10:30–11:45 a.m.
See page 14.

Impact Fees and Exactions (S426)

Monday, 1:00–2:15 p.m.
See page 15.

Bargaining for Development: Development and Annexation Agreements (S434)

Monday, 2:30–3:45 p.m.
See page 16.

Workforce or Mandatory Housing (S463)

Monday, 4:00–5:15 p.m.
See page 20.

Fiscal Assessment (S487)

Tuesday, 11:00 a.m.–12:15 p.m.
See page 24.

Comparative Costs of Sprawl (S528)

Tuesday, 3:00–4:15 p.m.
See page 29.

Paying as You Grow in Houston (S578)

Wednesday, 9:00–10:15 a.m.
See page 35.

Evolution of a Landmark Growth Policy (S589)

Wednesday, 10:30–11:45 a.m.
See page 37.

Open Mike: Is Growth Ever Free? (S615)

Wednesday, 2:30–3:45 p.m.
See page 40.

PLANNING COMMISSIONER AND APPOINTED OFFICIAL SESSION

From Soup to Nuts: Paying for Growth (S105)

Wednesday, 4:00–5:15 p.m.
See page 41

Volunteer-Written County Plans (S483)

Tuesday, 9:30–10:45 a.m.

Fostering volunteer participation in writing county plans is budget-conscious and stakeholder-friendly. Discover how dedicated volunteers, with staff guidance and review, produced community, policy, and watershed county plans in Williamson Valley, Arizona; White Pine County, Nevada; and Boone County, Missouri.

Sponsor: Small Town and Rural Planning Division. CM | 1.25

Developing a Context-Sensitive Code for Denver (S486)

Tuesday, 11:00 a.m.–12:15 p.m.

Hear how the City and County of Denver are in the midst of implementing a sweeping system of form-related zoning codes and standards that combines area typologies and building types into development patterns that are compatible with infill and redevelopment, but still protect community character. **CM | 1.25**

Fiscal Assessment (S487)

Tuesday, 11:00 a.m.–12:15 p.m.

Sound fiscal assessment is necessary for any community addressing the issue of paying for growth. But how do you develop capital and operating fiscal assessments that are thorough and address both current and future growth? Hear the latest research and assess the standard models. **CM | 1.25**

Food System Planning and Healthy Communities (S470)

Tuesday, 11:00 a.m.–12:15 p.m.

Discover strategies for designing and planning neighborhoods, destinations, and routes that promote healthy eating. View projects from around the country that have used community and regional food planning to build healthier communities. Hear the results of an APA member survey regarding involvement in promoting healthy eating through community and regional food planning. **CM | 1.25**

ISRAEL STOLLMAN ETHICS SYMPOSIUM

Ethics in Planning (S484)

Tuesday, 11:00 a.m.–12:30 p.m.

Hear the AICP Ethics Officer, Executive Director and CEO Paul Farmer, FAICP, and two other panelists discuss issues surrounding ethical behavior in planning practice. Panelists will engage the audience in ethics scenarios as encountered on the job. *Sponsor: American Institute of Certified Planners. CM | 1.5*

Building Communities That Matter to All (S485)

Tuesday, 11:00 a.m.–12:15 p.m.

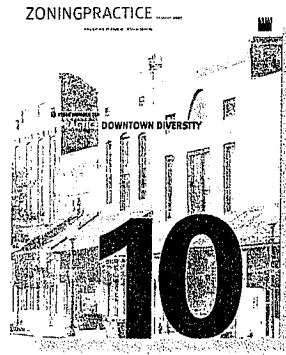
Harness the energies and capture the ideas of people of all ages to produce plans that shape communities that matter. Create policy-making opportunities that reflect community needs. Gain inspiration from the ways that communities are using Community Youth Mapping and Youth Master Plans to improve the well-being of children and families. *Sponsor: ResourcesZine. CM | 1.25*

SMART PRACTICE

Zoning Practice

The ultimate zoning reference

Subscribe at www.planning.org/zoningpractice.



Four Mile Run Restoration Master Plan (S488)

Tuesday, 11:00 a.m.–12:15 p.m.

Over the last several years, two Virginia jurisdictions jointly developed a plan to transform a degraded stream corridor into a green urban waterfront. Examine how this collaboration turned an ugly divide, which neither Arlington County nor the City of Alexandria wanted, into a shared amenity.

CM | 1.25

GIS in Development Review (S489)

Tuesday, 11:00 a.m.–12:15 p.m.

Three case studies demonstrate how a GIS-based tracking and approval management system for the development review process can create tangible improvements during times of increasing regulations and decreasing staff and resources. A streamlined and significantly more accurate review process that uses strategic management and partnerships can make a difference. **CM | 1.25**

Gaming and the City (S490)

Tuesday, 11:00 a.m.–12:15 p.m.

View the role of gaming in Las Vegas and other cities from a planner's perspective and consider the questions: What are the economic, cultural, and social impacts of casino gambling? What techniques—zoning provisions, urban design regulations, sign controls—do planners in casino locales find most useful? *Sponsor: Planning.*

CM | 1.25

Gender Pay Gap: Discrimination or Choice? (S491)

Tuesday, 11:00 a.m.–12:15 p.m.

Although women have made major advances during the past 30 years, there's still a big pay gap between the sexes. Women tend to choose careers that are good for their lives; men tend to choose jobs for higher income. Explore why 25 percent of the pay gap still cannot be explained. *Sponsor: Planning and Women Division.*

CM | 1.25

How Sick is Your Zoning Ordinance? (S492)

Tuesday, 11:00 a.m.–12:15 p.m.

Learn how to diagnose a "sick" zoning ordinance and determine a proper course of treatment. Zoning experts will outline the symptoms—poor organization, common regulatory problem areas, frequently used but outdated zoning techniques, legal issues related to land-use law, and specific zoning actions that are telltale signs of trouble. **CM | 1.25**

It's a Desert Out There (S493)

Tuesday, 11:00 a.m.–12:15 p.m.

The desert Southwest has emerged as the fastest growing region in the country. Hear how the Southern Nevada Water Authority Water Resource Plan, adopted in 1991 and updated in 2006, addresses acquisition, consumption, and conservation of water resources to accommodate phenomenal growth. **CM | 1.25**

Job Enhancement Strategies (S494)

Tuesday, 11:00 a.m.–12:15 p.m.

Happy in your current job? Or stuck in a career dead end? Can your job be made to better fit your long-range career objectives? Let experienced managers and directors provide you with strategies to get more satisfaction from your job and find ways to change your current job situation. **CM | 1.25**

Master Plans for Tomorrow (S495)

Tuesday, 11:00 a.m.–12:15 p.m.

Fast-growing and maturing communities are both planning for infill and small-area development. Design and compatibility with the surrounding community are critical. Learn how the nation's leading planning departments and urban designers are changing their master plan processes and documents to inform form-based zoning and respond to changes in the market. **CM | 1.25**

The New Generation of Planners (S496)

Tuesday, 11:00 a.m.–12:15 p.m.

Hear a report of the Young Planners Group, appointed by APA President Bob Hunter, FAICP. Presenters discuss how the newest generation of planners is different than their baby boomer managers in work approaches and career goals. Discuss young planners' needs and how they wish to contribute to the American Planning Association.

Planning in Developing Countries (S497)

Tuesday, 11:00 a.m.–12:15 p.m.

According to the UN, nearly two-thirds of the world's population will live in cities by 2050. Most growth will occur in developing countries. Can urban planners influence the direction of growth? Case studies from Karachi, Pakistan; Kigali, Rwanda; and Beijing, China, will form the basis for considering the major issues cities in developing countries face. **CM | 1.25**

Private-Sector Leadership in Brownfields Reuse Planning (S498)

Tuesday, 11:00 a.m.–12:15 p.m.

Because owners of brownfields sites are primarily interested in avoiding liability, they are rarely players in the reuse planning of their properties. Explore the rare cases where corporations take responsibility for reuse planning and consider, from lessons learned, ways to confront less altruistic property owners. **CM | 1.25**

Regulating Signs in the Digital Age (S499)

Tuesday, 11:00 a.m.–12:15 p.m.

Learn about sign regulation challenges, including familiar and emerging problems. Examine the framework that courts would likely use to evaluate the legality of attempts to respond to such problems with regulations, and learn how such regulations can be both effective and constitutional. **CM | 1.25**

Retail Merchandising in Historic Downtowns (S500)

Tuesday, 11:00 a.m.–12:15 p.m.

Big box retail has emptied many downtowns, reducing them to a messy collection of hobby stores, cheap restaurants, and ground floor offices. Learn how one downtown master plan extended the look and feel of the historic district and created mini-retail environments to reconnect and reposition a faltering retail market. **CM | 1.25**

Trying for Balance in Rural Development (S502)

Tuesday, 11:00 a.m.–12:15 p.m.

In coastal South Carolina five years ago, with intense development pressure on the doorstep, local leaders collaborated on a smart growth initiative to control and focus impending growth. Learn about this initiative, which ceded zoning and planning authority to various municipalities and set in place detailed development requirements and required annexation. **CM | 1.25**

Understanding the Science of Climate Change (S503)

Tuesday, 11:00 a.m.–12:15 p.m.

Effective climate change planning and decision making require an understanding of the scientific basis for climate change. Explore the science of climate change from the perspectives of urban and rural area planners. Hear about key scientific concepts and issues as well as climate change resources. **CM | 1.25**

Urban Design and Transportation Planning in L.A. (S504)

Tuesday, 11:00 a.m.–12:15 p.m.

Learn how Los Angeles linked 11 neighborhoods along the Arroyo Seco parkway through the development of a comprehensive urban design master plan. Observe how the plan responds to multimodal transportation needs and opportunities and links the parkway with Metro Gold Line stations and other L.A. destinations. **CM | 1.25**

AICP SYMPOSIUM

Placemaking (S505)

Tuesday, 1:30–2:45 p.m.

APA's Great Places in America Program this year recognizes places of exceptional character and quality that also incorporate environmentally sensitive and sustainable planning approaches. Examine the elements of great places, and how planning in the Southwest can simultaneously encourage place creation and conservation. *Sponsor: American Institute of Certified Planners.* **CM | 1.25**

British Casinos and Urban Regeneration (S506)

Tuesday, 1:30–2:45 p.m.

Develop an understanding of the British approach to casino development and its relationship to urban regeneration. Explore the flaws and failure of the process to date. Examine the impacts of the new Gambling Act and identify the planning, economic, and political issues that have hindered the implementation of this approach. **CM | 1.25**

Professional Development: What You Can Do Now! (S507)

Tuesday, 1:30–2:45 p.m.

Learn how to plan for your future and remain on the cutting edge of planning. Find out what AICP certification is all about and how you can start preparing for certification now. Meet with a recently certified planner, planning faculty, and other practicing planners. Learn how to start building professional credentials today. *Sponsor: Student Representatives Council.*

Cities Big and Small: Planning Perspectives (S508)

Tuesday, 1:30–2:45 p.m.

Planning directors face different challenges depending on a city's size and location. Learn from different planning agencies how much influence geography and size have on managing a planning agency, and about the general management challenges, struggles, and successes of being a GLBT manager for a city planning agency. *Sponsor: Gays and Lesbians in Planning Division.* **CM | 1.25**

Community Design in an Aging Society (S509)

Tuesday, 1:30–2:45 p.m.

Communities must ensure that older adults are able to stay healthy and engaged. Using national and local travel data and a case study, panelists show how the built environment and transportation services tailored to the needs of seniors can improve the health and livability of a community for all its residents. **CM | 1.25**

Comprehensive Planning for National Wildlife Refuges (S510)

Tuesday, 1:30–2:45 p.m.

All national wildlife refuges must have comprehensive conservation plans by 2012. The U.S. Fish and Wildlife Service has over 200 plans yet to complete. Examine diverse examples from refuges from Las Vegas to Cape Cod, discover what has and has not worked, and uncover ideas to improve productivity. **CM | 1.25**

Contrasts in Growth Management (S511)

Tuesday, 1:30–2:45 p.m.

Compare the Florida and Georgia Development of Regional Impact programs. Get an overview of the DRI program in both states, and hear the developer's comparison of the programs and lessons learned. **CM | 1.25**

Florida Master Planning (S512)

Tuesday, 1:30–2:45 p.m.

Evaluate the challenges of designing new communities from rural agriculture into thriving communities. Focus on four Florida examples and explore the challenges, including farmland and environmental preservation and creating functional and vibrant communities while planning for the physical and social infrastructure. **CM | 1.25**

Fresh Design Ideas for the New Metropolis (S513)

Tuesday, 1:30–2:45 p.m.

Contemplate emerging urban design ideas that embrace the immense changes evident in the form of the 21st century American city, especially the reality of extensive, loose landscape interwoven with highways, fields, industrial areas, and large-scale uses. Consider large-scale reclamation projects and small-scale restoration projects that incorporate both landscape and building. **CM | 1.25**

Build your own conference to learn about the latest ideas and hear what's working in communities around the country. Go online to see a complete itinerary for directors. Listed here are the activities and sessions designed exclusively for you.

A CONFERENCE FOR PLANNING DIRECTORS AND MANAGERS

NETWORKING

Planning Directors Breakfast (P006)

Tuesday, 6:45–8:00 a.m.
See page 68.

TRAINING WORKSHOP

New Directors Institute (W301)

Sunday, 7:30 a.m.–5:30 p.m.
See page 53.

SESSIONS

Reinventing Planning in Los Angeles (S416)

Monday, 10:30–11:45 a.m.
See page 14.

Planning Directors in the Hot Seat (S457)

Monday, 4:00–5:15 p.m.
See page 19.

Rethinking Planning and Climate Change (S559)

Tuesday, 4:30–5:45 p.m.
See page 33.

Incorporating Urban Design into Planning (S591)

Wednesday, 10:30–11:45 a.m.
See page 37.

Reflections on Climate Change and Big City Planning (S638)

Wednesday, 4:00–5:15 p.m.
See page 42.

FACILITATED DISCUSSIONS

Town-Gown Relationships (S801)

Monday, 2:30–3:45 p.m.
See page 67.

Planning and the Media (S804)

Tuesday, 1:30–2:45 p.m.
See page 67.

Discussion TBA (S811)

Wednesday, 2:30–3:45 p.m.

Discussion TBA (S815)

Thursday, 8:00–9:15 a.m.

PLANNING DIRECTOR HOSPITALITY SUITE

Stop by the hospitality suite to meet with other directors or just take a break. Facilitated discussions for directors and managers will also be held in the suite.

FOR YOUR STAFF

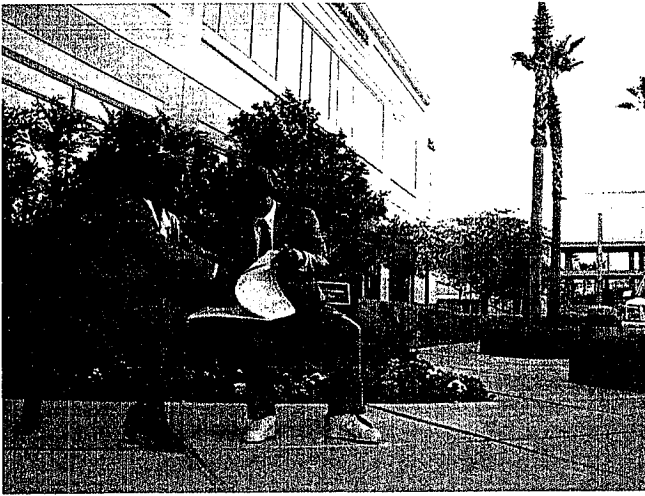
Your new planners will benefit from skill-building sessions, GIS instruction, tips on working with commissions, and AICP exam preparation. Your veteran planners can take advantage of advanced training, information on trends to watch, and opportunities to earn credits to maintain their AICP certification. The whole staff will get updates on current issues such as green planning and planning and public health.

FOR YOUR COMMISSIONERS

New commissioners will benefit from workshops that introduce them to the roles and responsibilities of the commission. Those who've been around a while will want to attend sessions on running efficient meetings or dealing with hostile audiences. There is also a workshop on variances, special uses, and board of adjustment procedures.

Register 10 or more commissioners or officials and save 10 percent! Call APA Customer Service at 312-334-1250 for details.

Photo courtesy of Greg Toth



Local Host Committee Track

Over one million people live in the greater Las Vegas region. Find out how planning builds community, addresses environmental issues, and makes this community fun for visitors and home for residents.

Conservation Planning in the West (S414)

Monday, 10:30–11:45 a.m.
See page 14.

Regional Agencies in Multistate Environments (S425)

Monday, 1:00–2:15 p.m.
See page 15.

Supersized Master Planned Communities (S444)

Monday, 2:30–3:45 p.m.
See page 18.

Resort Hotel Development (S460)

Monday, 4:00–5:15 p.m.
See page 20.

It's a Desert Out There (S493)

Tuesday, 11:00 a.m.–12:15 p.m.
See page 25.

Saving Nevada's Oldest Church (S521)

Tuesday, 1:30–2:45 p.m.
See page 29.

Aviation Infrastructure Development in Utah and Nevada (S526)

Tuesday, 3:00–4:15 p.m.
See page 29.

Public Investment in the Arts (S558)

Tuesday, 4:30–5:45 p.m.
See page 32.

Merging Municipal and County Planning (S576)

Wednesday, 9:00–10:15 a.m.
See page 35.

Mixed Use Infill Development in Las Vegas (S593)

Wednesday, 10:30–11:45 a.m.
See page 37.

Trails in the Urban Context (S645)

Wednesday, 4:00–5:15 p.m.
See page 43.

Signage as a Cultural Amenity in Las Vegas (S656)

Thursday, 8:00–9:15 a.m.
See page 45.

How Bad Leaders Spoil Good Planning (S514)

Tuesday, 1:30–2:45 p.m.

A successful urban planner must be a good leader, yet far too many professionals cannot lead. Get a firsthand look at how poor leaders and managers create declining staff morale and less committed workers. Even worse, they can prevent planners from producing new ideas and solving important problems. *Sponsor: Planning and Women Division.* **CM | 1.25**

Making Energy a Primary Issue (S515)

Tuesday, 1:30–2:45 p.m.

New Hampshire is in the spotlight every four years during the presidential primaries. An issue in 2008 is energy and climate protection. Hear how three planners have made energy planning a priority at the local level—between presidential elections—through their roles as development reviewers, facilitators, organizers, go-getters, and educators. **CM | 1.25**

Making Inclusionary Zoning Work (S516)

Tuesday, 1:30–2:45 p.m.

Everyone wants affordable housing, but achieving it through inclusionary zoning presents formidable planning, economic, legal, and political challenges. Beginning with the question of whether affordable housing should be mandated or encouraged through zoning incentives, panelists will discuss the issues and challenges in developing and implementing effective inclusionary zoning programs. **CM | 1.25**

Maryland's Role in Directing Land Use (S517)

Tuesday, 1:30–2:45 p.m.

Join expert academics, an experienced consultant, and the top planning official in the State of Maryland as they discuss the land-use and related impacts of state-level policies across the country, and how a scenario-planning exercise in Maryland is incrementally trying to address some of the issues. **CM | 1.25**

Planning and Election Year Political Influence (S518)

Tuesday, 1:30–2:45 p.m.

Explore how election season provides an important opportunity for planners to influence policy makers and create momentum for change. As the 2008 elections approach, learn techniques for influencing candidates, impacting elections, and collaborating with transition teams. Find out the 10 most important things planners can do before and after Election Day. **CM | 1.25**

Planning for Street Markets and Street Merchants (S519)

Tuesday, 1:30–2:45 p.m.

Markets create economic activity and a sense of place, and serve agendas beyond financial transactions. Examine how markets can help communities reconstruct their food systems by involving a greater diversity of participants. Learn about requirements for market regulation. Discover how design, infrastructure, security, and transportation influence market success. **CM | 1.25**

Pre-Disaster Planning for Post-Disaster Recovery (S520)

Tuesday, 1:30–2:45 p.m.

Examine the methods used in preparing a community-based plan to guide short- and long-term recovery following potential disaster events. Consider recent case studies and share the lessons learned. Discuss obstacles to overcome in developing local policies and procedures for long-term redevelopment in advance of destructive disaster events.

CM | 1.25

Saving Nevada's Oldest Church (S521)

Tuesday, 1:30–2:45 p.m.

First Presbyterian Church, Nevada's oldest, was constructed in 1896 and described as a unique example of unusual style and type structure. Despite ties to Mark Twain and many contributions to the Carson City Historic District, this important building was in need of repair. Learn how multiple jurisdictions came together in this preservation effort. **CM | 1.25**

Racial and Social Justice in Planning (S522)

Tuesday, 1:30–2:45 p.m.

In 2003, the City of Seattle introduced the Race and Social Justice Initiative. Examine how the Department of Transportation developed a work plan that included department-wide diversity training and goals for delivering services more equitably, engaging minority communities in planning, recruiting more minority staff, and eliminating institutional racism. *Sponsor: Planning and the Black Community Division.* **CM | 1.25**

TOD Strategies for a City and a Developer (S524)

Tuesday, 1:30–2:45 p.m.

Examine the inconsistencies between design standards germane to a TOD and existing zoning regulations and street design standards in Austin, Texas. Explore the challenges of the Station Area TOD project, which are not unique to Austin. Discover the expertise needed to overcome the design, development, and regulatory issues to successfully implement TOD.

CM | 1.25

The Virtual Staff Report (S525)

Tuesday, 1:30–2:45 p.m.

So much of planning is about geography, and Google Earth can make GIS accessible to everyone. Learn how planners can illustrate plans and proposals in 3D, allowing stakeholders and decision makers to view proposals online and in hearings. Discover why Durango, Colorado, is exploring this new technology. **CM | 1.25**

Aviation Infrastructure Development in Utah and Nevada (S526)

Tuesday, 3:00–4:15 p.m.

Population growth in southern Utah and Nevada has created a need for better airports and aviation service. Learn how three proposed airports in small, medium, and large cities are being planned and how their experiences can be applied to your local projects. **CM | 1.25**

Brownfield Redevelopment in Downtown Missoula (S527)

Tuesday, 3:00–4:15 p.m.

Learn how brownfield revitalization in Missoula, Montana, incorporated adaptive reuse, environmental clean up, expansion of a riverfront park system, and urban mixed use development in the center of this Rocky Mountain regional hub. Engaging an innovative public and private funding partnership, the project has great significance for other sites. **CM | 1.25**

Comparative Costs of Sprawl (S528)

Tuesday, 3:00–4:15 p.m.

Do growth controls have the savings they claim to? New research has examined the fundamental question—has growth been controlled and along with it, the costs? Hear about the types of studies undertaken and what they concluded.

CM | 1.25

Sustainable Development for Desert Climates (S523)

Tuesday, 3:00–4:15 p.m.

How do planners, designers, and developers respond to an extreme climate with environmentally sensitive, resource-efficient, and community-oriented development that leverages the natural abundance of the desert? Hear three perspectives—planner, designer, and developer—and discover how they foster more sustainable development. **CM | 1.25**

Contested Streets: Breaking NYC Gridlock (S529)

Tuesday, 3:00–4:15 p.m.

View this new documentary film on the history of New York City street life. New York streets of today are contrasted with London, Paris, and Copenhagen. The film was commissioned by Transportation Alternatives.

Showcasing Good Planning in Your Community (S530)

Tuesday, 3:00–4:15 p.m.

Awards programs reward and showcase great examples of local planning and design. Learn how your agency can plan and host a community design awards event to increase the visibility of good planning and encourage others to learn and imitate. Take home practical how-to information and a useful toolbox. **CM | 1.25**

Diversity Forum (S531)

Tuesday, 3:00–4:15 p.m.

Join this discussion of the American Planning Association's programs to increase diversity in planning. All attendees are welcome to attend. Bring your ideas and offer your insights.

Hazard Mitigation in Comprehensive Plans (S532)

Tuesday, 3:00–4:15 p.m.

Most hazards are mitigated through land-use activities. Common sense directs that hazards are best addressed within comprehensive plans. Learn ways to bring together emergency managers, planners, and other officials to reduce risks from natural hazards. Consider state and local approaches to integrating hazard mitigation into local planning processes. **CM | 1.25**

Innovative Community Participation (S533)

Tuesday, 3:00–4:15 p.m.

Foster greater (and easier) public participation in the land-use decision-making process. Use technology to reach new audiences, partner with community colleges, create a community identity for the planning board, and build picture-based tools for non-native speakers. Planners from three communities share innovative outreach, technology-based programs, and a community outreach toolkit. **CM | 1.25**

Meeting Affordable Housing Needs (S534)

Tuesday, 3:00–4:15 p.m.

Conversion of vacant and abandoned properties into tax-producing spaces that serve the community requires creative approaches to land acquisition. Land banking may overcome many obstacles to municipal land acquisition, but is limited by current legislation. Explore land banking legislation and techniques and examine their implementation in large metropolitan and small-town settings. **CM | 1.25**

New Directions for Parks and Open Spaces (S535)

Tuesday, 3:00–4:15 p.m.

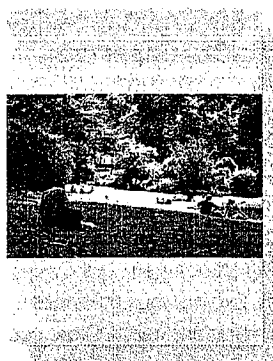
Hear the latest thinking on how communities should plan for current and future park and open space needs, moving away from recreation programming and toward green infrastructure. Speakers wrote the new PAS Report, *From Recreation to Re-creation: New Directions in Parks and Open Space System Planning*. **CM | 1.25**

CONNECT

From Recreation to Re-Creation

Comprehensive planning for parks

Available at [APA's Planningbooks.com](http://APA'sPlanningbooks.com)



New Urbanism vs. True Urbanism (S536)

Tuesday, 3:00–4:15 p.m.

What is the new urbanist ideal and how feasible is this model for developers to employ? Hear two perspectives on new urbanism as a land development model. Examine the history, principles, applicability, and future of the movement, looking at its limitations and liabilities as well as its strengths and potential. **CM | 1.25**

The Politics of Property Fairness (S537)

Tuesday, 3:00–4:15 p.m.

Get the latest developments in the property fairness debate, including results from Oregon's Measure 49 campaign, and outline what's ahead for the 2008 election. Learn how to reframe the discussion and influence the debate. Find out how to increase your advocacy influence and get tips for dealing with local disputes. **CM | 1.25**

Regional Revitalization for Environmental Improvement (S538)

Tuesday, 3:00–4:15 p.m.

Discover the tools, techniques, and lessons learned in the process of creating a new regional plan for the Lake Tahoe Basin. The plan focuses on revitalizing the urban areas in the basin for environmental improvements, using tools such as environmental performance zones, regional transect-based planning, and form-based codes. **CM | 1.25**

Renewable Energy Planning in Northern Mexico (S539)

Tuesday, 3:00–4:15 p.m.

Energy planning in Mexico is moving beyond fossil fuels to renewable energies. While energy reform remains pending, regional efforts have advanced wind- and solar-energy studies that soon could become operational. Learn about a binational, public-private initiative in renewable energy planning to support regional development in northern Mexico. **CM | 1.25**

Saving the World through Zoning (S540)

Tuesday, 3:00–4:15 p.m.

Building on last year's session introducing the sustainable code concept, this session presents the Rocky Mountain Land Use Institute's innovative Model Sustainable Development Code and explores how local governments across the country are implementing sustainable concepts in their zoning and land-use regulations. **CM | 1.25**

Solving Congestion and Improving Mobility (S541)

Tuesday, 3:00–4:15 p.m.

Mobility is critical to regional economic development and sustainability. Most regions face increasing traffic congestion and reduced regional mobility. Given current regional development patterns, planners must reconsider ways to accommodate customized, automobile-oriented travel and whether mass transit is an effective policy strategy for addressing regional mobility goals. **CM | 1.25**

Taming Teardowns (S542)

Tuesday, 3:00–4:15 p.m.

The demolition of older housing through teardowns and replacement with oversized, new homes—commonly referred to as McMansions—presents an increasing threat to communities nationwide. Learn about the environmental, economic, and social impacts of teardowns, as well as successful strategies for addressing this destructive practice. **CM | 1.25**

The Future of Urban Entertainment Districts

(S543)

Tuesday, 3:00–4:15 p.m.

What is the future of American urban entertainment? Learn how the next generation of high-intensity entertainment districts, from Los Angeles to New York, are blending the lines between public and private spaces and using urban design, signage, and an unceasing merging of uses to achieve a "sense of place." **CM | 1.25**

Three Perspectives on Enhancing Development Review

(S544)

Tuesday, 3:00–4:15 p.m.

Local governments are pressed to meet demands for timely, thorough, and predictable development services. Varying budgets, size, and growth rate among jurisdictions counsels against a "one-size-fits-all" approach to improving development review. Examine process-related and technology-oriented enhancements from the perspectives of a metropolitan county, edge city, and small town. **CM | 1.25**

Tools to Increase Understanding Land-Use Regulations

(S545)

Tuesday, 3:00–4:15 p.m.

Examine the most cutting-edge tools and techniques used by local governments to help educate citizens, developers, and government officials about the community's land-use regulations. Take home effective communication strategies composed of web-based codes, user guides, interactive applications, and other techniques for making development regulations more accessible and understandable. **CM | 1.25**

Trends in Alternative Water Supply Development

(S546)

Tuesday, 3:00–4:15 p.m.

Cheaper traditional sources of water are diminishing and the adverse effects of overutilization of natural water resources on the environment are becoming more apparent. Learn how communities are linking water supply and growth management planning and developing more alternative sources of water to meet future population demands. **CM | 1.25**

Ways for Regional Governments to Target Investments

(S547)

Tuesday, 3:00–4:15 p.m.

Regional agencies are using federal transportation dollars to promote smart growth in communities. These investments are fundamental to combating sprawl and its negative impacts on quality of life. Examine how regional federal transportation programs are reinvesting in communities and neighborhoods to promote smart growth through inter-jurisdictional cooperation and collaboration. **CM | 1.25**

Advances in Sustainable Tourism

(S548)

Tuesday, 4:30–5:45 p.m.

"Ecotourism," "LEED-certified," "green hotel," "environmentally friendly," and "sustainable tourism" are some of the words increasingly being used in the tourism industry. How are governments, the recreation industry, resort developers, and hoteliers making advances toward achieving sustainability? What can communities do to implement principles of sustainability in planning resort towns? *Sponsor: Resort and Tourism Division.* **CM | 1.25**

Airports and Sustainable Development Practices

(S549)

Tuesday, 4:30–5:45 p.m.

Airports large and small are incorporating sustainable development practices into expansion and retrofit projects. Learn about the sustainable development practices being pursued at the Philadelphia International Airport and other airports around the country. Look at challenges and obstacles faced by many of these airports, and consider what the future holds. *Sponsor: Environment, Natural Resources, and Energy Division.* **CM | 1.25**

California Regional Blueprint Planning

(S550)

Tuesday, 4:30–5:45 p.m.

Learn about the innovative approach to aligning state and regional planning being used by metropolitan planning organizations in California. "Regional blueprint plans" address the important connections between regional transportation and land-use planning as well as climate change, sensitive lands conservation, goods movement, and affordable housing. *Sponsor: Regional and Intergovernmental Planning Division.* **CM | 1.25**

Could We Build Rome Today?

(S551)

Tuesday, 4:30–5:45 p.m.

Building new towns takes innovative planners and developers, creative codes, political will, and community support. Transforming existing codes for mixed use, compact, and walkable communities can happen. Case studies from Florida, Virginia, and other locations illustrate how development can happen, even though we could not build Rome again if we tried. *Sponsor: New Urbanism Division.* **CM | 1.25**

County Leadership for Regional Collaboration

(S552)

Tuesday, 4:30–5:45 p.m.

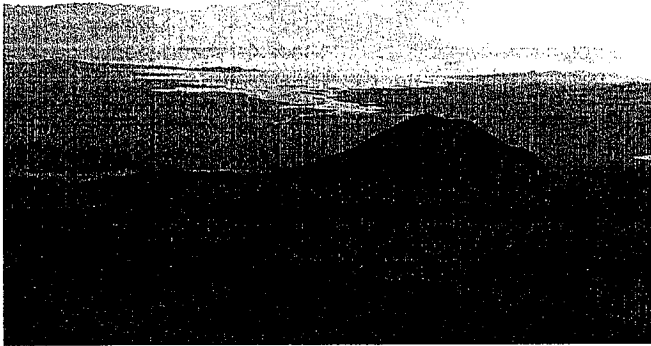
Counties, municipalities, and regional agencies are increasingly collaborating to address interjurisdictional planning issues. Explore the processes used in successful regional collaborative initiatives that range from countywide regional plans to small-scale subarea plans, and address issues such as growth management, land use, economic development, public facilities, and transportation infrastructure. *Sponsor: County Planning Division.* **CM | 1.25**

Current Trends in Future Analysis

(S553)

Tuesday, 4:30–5:45 p.m.

Advancements in technology and modeling research have increased using futures analysis for development of public growth, water resources, open space, hazards, and land use policy. In this session, examine emerging trends in futures analysis and modeling including uncertainty and risk, integrating urban and environmental models, goal optimization, and strategic analysis. *Sponsor: Technology Division.* **CM | 1.25**



Training Planning Commissioners and Officials Track

Explore all aspects of training planning commissioners. From ethics to economic development, find out how training is financed and constantly kept relevant.

Legal Foundation of the Planning Commission: Discussion of the Techniques of Training (S008)

Sunday, 9:00 a.m.–noon
See page 54.

Mandatory Training for Planning Commissioners (S404)

Monday, 10:30 a.m.–12:30 p.m.
See page 13.

Partnerships and Structure for Training Planning Officials (S430)

Monday, 1:00–2:15 p.m.
See page 16.

Partnerships for Training Between Organizations (S447)

Monday, 2:30–3:45 p.m.
See page 18.

Creating Curriculum (S451)

Monday, 4:00–5:15 p.m.
See page 18.

Teaching Urban Design to Officials (S561)

Tuesday, 4:30–5:45 p.m.
See page 33.

Emerging Issues in Indigenous Planning (S554)

Tuesday, 4:30–5:45 p.m.

Indigenous planners and those serving indigenous communities present examples from current work experiences that illustrate new and emerging issues facing these communities. Topics include public-private partnerships to develop critical infrastructure, tribal environmental management programs, indigenous education and language programs, reestablishing indigenous food systems, economic development, technology, and cultural tourism. *Sponsor: Indigenous Planning Division.* **CM | 1.25**

Federal Planning Initiatives in the DOD (S555)

Tuesday, 4:30–5:45 p.m.

Representatives of the Army, Navy, Air Force, and Coast Guard discuss the range of planning activities the Department of Defense is involved in on a daily basis. Learn about the facility, environmental, infrastructure, training, and encroachment issues they face, and planning objectives that are unique to ensuring mission readiness. *Sponsor: Federal Planning Division.* **CM | 1.25**

Lessons from Germany's Green Communities (S556)

Tuesday, 4:30–5:45 p.m.

European green communities and their planners have a lot to share with their North American counterparts about applying sustainable development concepts, from solar initiatives to zero energy programs. Hear from a number of the leading green communities in Germany at this information-filled session. *Sponsor: International Division.* **CM | 1.25**

Planning for Change in Rural Communities (S557)

Tuesday, 4:30–5:45 p.m.

Gain unique insight into the issues surrounding new urbanism in a rural context. This case study of Harrison County, Mississippi, examines the tools that are helping empower citizens to make decisions about how to most effectively manage growth and change while preserving the county's scenic and rural character. *Sponsor: Small Town and Rural Planning Division.* **CM | 1.25**

Public Investment in the Arts (S558)

Tuesday, 4:30–5:45 p.m.

Learn how modest public investment in the arts results in enhanced community identity, branding, quality of life, and economic vitality. Explore two case studies that used the arts to attract residents and visitors back into the downtown core and improved neighborhood streetscape vitality. **CM | 1.25**

Rethinking Planning and Climate Change (S559)

(S559)

Tuesday, 4:30–5:45 p.m.

Planners must be bold in helping cities develop ways to address climate change and rethink how they do business. Planners can restructure their organizations, hire staff with alternative types of expertise, and revise missions. Hear how the planning directors of Portland, Oregon, and Seattle have taken on this challenge. *Sponsor: City Planning and Management Division.* **CM | 1.25**

Small Planning Firm—Large Consulting Firm (S560)

Tuesday, 4:30–5:45 p.m.

Learn how to leverage the capabilities of your small planning firm by teaming with large consulting firms. Develop the skills necessary to identify large firms with an interest similar to your planning firm and better understand their motives for teaming. Gain insight in negotiating a strong position for profit and earnings. *Sponsor: Private Practice Division.* **CM | 1.25**

Teaching Urban Design to Officials (S561)

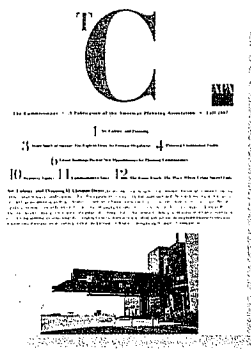
Tuesday, 4:30–5:45 p.m.

These training programs reach a broad range of officials to teach them the fundamentals of good urban design. You'll learn about the curriculum, techniques, and outcome of programs that took a lesson from the National Endowment for the Arts Mayors' Institute on City Design. See how these broad regional efforts are working in Florida and Georgia. **CM | 1.25**

INFORMED

The Commissioner
Informed is effective.

Subscribe at
[www.planning.org/
thecommissioner](http://www.planning.org/thecommissioner).



Contested Space: Latinos and Public Spaces (S562)

Tuesday, 4:30–5:45 p.m.

Learn how Latinos are reclaiming public spaces to build a sense of community in this timely discussion of inclusive design practices. Issues surrounding access to these spaces are not exclusive to the Latino condition, but as population increases, their participation in community decisions are pivotal in planning for parks and recreation. *Sponsor: Latinos and Planning Division.* **CM | 1.25**

Industrial Lands Debate: Protect or Reuse? (S563)

Tuesday, 4:30–5:45 p.m.

In cities where the land is scarce, commercial developers are eager to use lower cost industrial lands for residential and commercial uses. Some economic developers say this could threaten a city's economic health. Others say that urban economies can grow with less industrial land. How can planners reconcile these opinions? *Sponsor: Economic Development Division.* **CM | 1.25**

Next Generation Statewide Affordable Housing (S564)

Tuesday, 4:30–5:45 p.m.

Hear speakers representing Massachusetts, Chicago, Wake County in North Carolina, and the Center for Housing Policy in Washington discuss their experiences with the new generation of affordable housing policy and regulation, its current impact, and the future policy changes to create more affordable housing throughout the states. *Sponsor: Housing and Community Development Division.* **CM | 1.25**

Urban Designers as Social Planners (S565)

Tuesday, 4:30–5:45 p.m.

Examine the challenges of two communities where physical planning is at odds with social concerns. In the redevelopment of Columbia, Maryland, the social implications of planning were openly discussed during its inception. In Leesburg, Virginia, the innovative use of urban design both preserves and reinvigorates the historic town. *Sponsor: Urban Design and Preservation Division.* **CM | 1.25**

Wireless Communications Infrastructure and the Law (S566)

Tuesday, 4:30–5:45 p.m.

Engage in lively discussion as a panel of industry, public, and consulting attorneys address current conflict in the wireless infrastructure siting sector. Learn about common elements that trigger federal preemption of local land-use controls and conflict trends across the nation, and the control fallacies related to each. *Sponsor: Planning and Law Division.* **CM | 1.25**

You CAN Get There From Here! (S567)

Tuesday, 4:30–5:45 p.m.

Retrofitting roadways for pedestrians and bicyclists is a critical component of community livability and congestion management. This session uses illustrations of successful projects and examples of best practices to help local government officials learn critical techniques and planning processes to accommodate these important transportation modes. *Sponsor: Transportation Planning Division.* **CM | 1.25**

Photo courtesy Las Vegas Redevelopment Agency/Douglas



"I NEVER IMAGINED HOW IMPORTANT IT WOULD BE TO ATTEND AN APA NATIONAL CONFERENCE UNTIL I WAS THERE EXPERIENCING IT."

-Past conference attendee

WEDNESDAY

Brownfield Revitalization

The term "brownfield" was coined 15 years ago. What has happened since? Sessions explore how brownfields are accessed for redevelopment, the types of projects undertaken, and the success of various techniques for sustained development. Has planning been as central to these projects as it should be? How have planners supported these efforts and leveraged greater gains through planning? Assess how brownfields have been integrated into regional and community economic development and planning.

Brownfields Redevelopment and Long-Term Stewardship (S405)

Monday, 10:30–11:45 a.m.
See page 14.

Transforming Landfill to Landscape (S432)

Monday, 1:00–2:15 p.m.
See page 16.

Redeveloping the Brownest of the Brownfields (S477)

Tuesday, 9:30–10:45 a.m.
See page 22.

Private-Sector Leadership in Brownfields Reuse Planning (S498)

Tuesday, 11:00 a.m.–12:15 p.m.
See page 26.

Brownfield Redevelopment in Downtown Missoula (S527)

Tuesday, 3:00–4:15 p.m.
See page 29.

Creating School Sites in New Jersey (S649)

Thursday, 8:00–9:15 a.m.
See page 45.

FACILITATED DISCUSSIONS

Connecting Planners, Brownfields, and the Community (S813)

Wednesday, 4:00–5:15 p.m.
See page 67.

WEDNESDAY, APRIL 30

World Planning Keynote

Wednesday, 7:45–8:45 a.m.

See page 47. **CM | 1**

Social Equity Planning for Planning Commissioners (S104)

Wednesday, 9:00–10:15 a.m.

Many planning commissioners feel they have become "development processing commissioners" in the search for growth. Explore an alternative paradigm within a broader context that emphasizes social equity planning linked to policies, the comprehensive plan, and the capital budget.

Environment and Sustainability in Transit Evaluation (S411)

Wednesday, 9:00–10:15 a.m.

Many planners believe the act of being forced into monetary cost-benefit analysis biases any evaluation process against protection of the environment. Yet there are methods that can address lack of certainty in costs or benefits. Learn a few and how to incorporate them into the evaluation process. **CM | 1.25**

An Evolution Toward Airport Cities (S568)

Wednesday, 9:00–10:15 a.m.

Is it possible to develop airport properties using strategies other than those that encourage traditional aviation-supporting industrial uses? Join airport developers for an interactive discussion and discover how the development philosophy of airports is broadening the understood definition of aviation-supporting uses. Hear their vision for airport cities in North America. **CM | 1.25**

Betting on Redevelopment (S569)

Wednesday, 9:00–10:15 a.m.

Casino gaming has transformed the Mississippi Gulf Coast from a family vacation locale to the third-largest gaming resort destination. Potential gaming sites have increased following Hurricane Katrina due to a law allowing on-land gaming. Learn about site plan review for gaming projects, adjacent land-use impacts, and tax revenue generation. **CM | 1.25**

Box City and Youth Outreach (S570)

Wednesday, 9:00–10:15 a.m.

For 14 years Las Vegas has used the Box City program to educate and inform the public. Box City is a popular youth engagement program that can expand to do more. Learn how it has created professional networks and how effectively it has involved the community in local planning. **CM | 1.25**

Bridging the Educator-Practitioner Gap (S571)

Wednesday, 9:00–10:15 a.m.

Greater collaboration between educators and practitioners produce more effective planners. Find out how the Planning Accreditation Board and its sponsoring organizations are improving the assessment of planning school performance, to increase the diversity of planning school faculties and to provide experienced planners with better access to continuing education. **CM | 1.25**

Climate Change in the Interior West (S572)

Wednesday, 9:00–10:15 a.m.

Increased drought, wildfire, heat waves, and flooding will result from climate change in the west. Decreasing greenhouse gas emissions is critical, but so is adaptation. Hear what science tells us about climate change in the region. What are appropriate adaptation strategies? Are there conflicts or synergies between mitigation and adaptation? **CM | 1.25**

Compassion-Based Code Enforcement (S573)

Wednesday, 9:00–10:15 a.m.

Get the tools necessary to partner with the faith community to address code violations at homes where traditional enforcement would not be appropriate. Learn to set up a "Beautiful Day" event with the faith community when volunteers resolve violations at the homes of low-income, elderly, and disabled residents. **CM | 1.25**

Gentrification from Gay to Straight (S574)

Wednesday, 9:00–10:15 a.m.

Explore the cyclical nature of gentrification and learn how, in the past 40 years, historically gay neighborhoods have changed from low income to gay and lesbian to urbane and trendy. This session focuses on the demographic trend affecting large gay neighborhoods in San Francisco, Chicago, Washington, and New York. *Sponsor: Gays and Lesbians in Planning Division.* **CM | 1.25**

Global Planners Network Discussion (S575)

Wednesday, 9:00–10:15 a.m.

Launched in 2005 prior to the 2006 World Urban Forum in Vancouver, GPN has grown to almost 20 planning organizations representing planning throughout the world.

Merging Municipal and County Planning (S576)

Wednesday, 9:00–10:15 a.m.

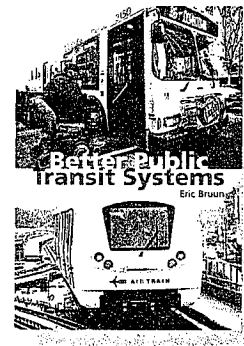
Join this panel discussion with three different groups attempting to merge municipal and county planning services. Learn how to evaluate the merits of merging services, understand complex issues involved, and determine which services are most appropriate for a merger. **CM | 1.25**

GET MOVING

Better Public Transit Systems

Define transit goals and analyze alternatives.

Available at
APA's Planningbooks.com



Controlling Large Houses (S577)

Wednesday, 9:00–10:15 a.m.

Examine the limitation of house sizes with particular attention to the link between comprehensive plans and land-use regulations. Consider general trends and specific municipal and county approaches. **CM | 1.25**

Paying as You Grow in Houston (S578)

Wednesday, 9:00–10:15 a.m.

Has the Houston region figured out a better way to pay for growth? Hundreds of municipal utility districts finance community infrastructure. A major freeway system expansion will be largely toll-financed. The economy is booming, yet housing is available and affordable. What's the down side? Explore Houston's "pay as you grow" experience. **CM | 1.25**

Public Art in Public Space (S580)

Wednesday, 9:00–10:15 a.m.

Learn about the components of successful public art. Hear from an artist and public art planner and the public art manager of Americans for the Arts as they discuss contemporary public art and successful master planning processes. The Public Art Network's tools and resources will enable you to create successful public art in your community. **CM | 1.25**

School-Community Partnerships and SmartGrowth (S581)

Wednesday, 9:00–10:15 a.m.

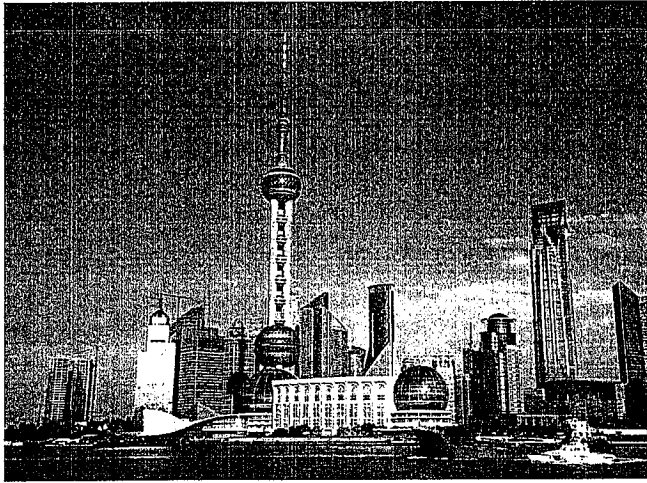
As schools age, planners are presented with an opportunity to respond to changing urban demographics to better link schools with communities. Join a team of professionals and discuss how partnerships, cross-collaboration, and the principles of smart growth can improve not only schools, but communities as well. **CM | 1.25**

Small and Rural Area Transit Operations (S582)

Wednesday, 9:00–10:15 a.m.

Learn how this particular method for forecasting transit ridership in rural areas sets the stage for the founding of a transit agency. Examine Bozeman, Montana's experience and how transit agencies can become involved with the MPO in small urban regions. **CM | 1.25**

© Loic Bernard/istockphotos



China Program Events in Las Vegas

For information on these programs and instructions for registration visit www.planning.org/apainchina

China Night Dinner

Tuesday

Join our Chinese delegates from Zhenjiang and other Chinese cities and alumni of APA's China Study Tour and workshops for an evening of toasts and good Chinese cuisine. Renew acquaintances and meet new friends interested in planning in China. To register for this event, visit the webpage listed above. **| \$60 (registration separate from conference registration)**

Planning in China: Innovations and Challenges (S597)

Wednesday, 10:30–11:45 a.m.

See page 38.

Planning in China Workshop (W302)

Thursday, 9:00 a.m.–noon

Learn about APA cooperation with U.S. and Chinese governments and common issues, including climate change and disaster mitigation, among planners in both countries. Practitioners from both countries will discuss differing approaches to strategic planning and urbanization. Participate in a roundtable on the challenges of urbanization and lively discussion of your questions. This cost of this workshop is included with registration, but space is limited.

The 21st Century Community (S583)

Wednesday, 9:00–10:15 a.m.

Explore universal design, visitability, and active living as key initiatives for addressing today's housing and neighborhood design challenges. Recognizing and drawing attention to these strategies will enable planners, public officials, builders, consumers, and advocates to better prepare for the future's aging population and create a more ideal 21st century community. **CM | 1.25**

The Indianapolis Cultural Trail (S584)

Wednesday, 9:00–10:15 a.m.

A first-of-its-kind public-private initiative, the cultural trail connects the arts and cultural districts within Indianapolis and outlying areas. Examine the trail's multimodal connections, economic development, arts and tourism enhancement, pedestrian orientation, and public-private partnership creation. **CM | 1.25**

The Louisiana Speaks Regional Plan (S585)

Wednesday, 9:00–10:15 a.m.

This critical assessment of the Louisiana Speaks Regional Plan—the State of Louisiana's strategy to guide recovery and future growth in areas affected by hurricanes Katrina and Rita—draws upon the experiences of the lead public and private planners. Hear about the plan's implications for post-disaster planning practice. **CM | 1.25**

Transforming Metropolitan Planning (S586)

Wednesday, 9:00–10:15 a.m.

The central Puget Sound region in Washington has updated its integrated growth, economic, and transportation vision. Learn about the transformation of metropolitan planning to establish collaborative processes for addressing complex environmental systems, climate change, compact development, health and physical activity, urban design, multimodal transportation, and planning for future generations. *Sponsor: Regional and Intergovernmental Planning Division.* **CM | 1.25**

The Transit/Tourism Connection (S587)

Wednesday, 9:00–10:15 a.m.

By understanding the relationship between transit and tourism, communities can implement strategies to leverage and improve upon existing transit systems to boost tourism, at the same time boosting the economy and creating a more sustainable community. Learn how communities can cultivate the unique assets of place that attract tourists. *Sponsor: Resort and Tourism Division.* **CM | 1.25**

Community Applications of Parcel Data Systems (S588)

Wednesday, 10:30–11:45 a.m.

GIS and Internet technology allow communities to develop web-based property information systems that make data available to agency staff, community development practitioners, and the public. Uncover the state of the art in systems development and innovative planning applications including affordable housing preservation, neighborhood revitalization, and vacant land reclamation. **CM | 1.25**

Evolution of a Landmark Growth Policy (S589)

Wednesday, 10:30–11:45 a.m.

See how changes in the landmark growth management policy in Montgomery County, Maryland, represent a substantial evolution of the mechanisms by which the county recaptures the marginal costs of new development. Among the challenges of proposed changes is the perceived impact on affordable housing in a high-cost housing area. **CM | 1.25**

From Gray Streets to Green Streets (S590)

Wednesday, 10:30–11:45 a.m.

Examine urban design and public space possibilities inherent within city street systems. Hear about the Green Streets master planning process in Omaha and a plan to convert an Oklahoma freeway into a Grand Boulevard. Gain practical tools to evaluate the street design environment and potential of individual cities. **CM | 1.25**

Incorporating Urban Design into Planning (S591)

Wednesday, 10:30–11:45 a.m.

Recent movements such as smart growth, new urbanism, and livable communities have enabled urban design to be a more mainstream part of local public planning. Through an actively moderated discussion, this session will explore the very best current practices for the integration of urban design in local public planning. *Sponsors: Urban Design and Preservation Division and City Planning and Management Division.* **CM | 1.25**

Maintaining Rural Character in Fast-Growing Alaska (S592)

Wednesday, 10:30–11:45 a.m.

Many Alaskan communities struggle to grow without compromising their rural character. Explore three case studies and learn a new approach to planning in these communities. Learn challenges and successes as well as innovative policies and tools applied through the planning process. **CM | 1.25**

Mixed Use Infill Development in Las Vegas (S593)

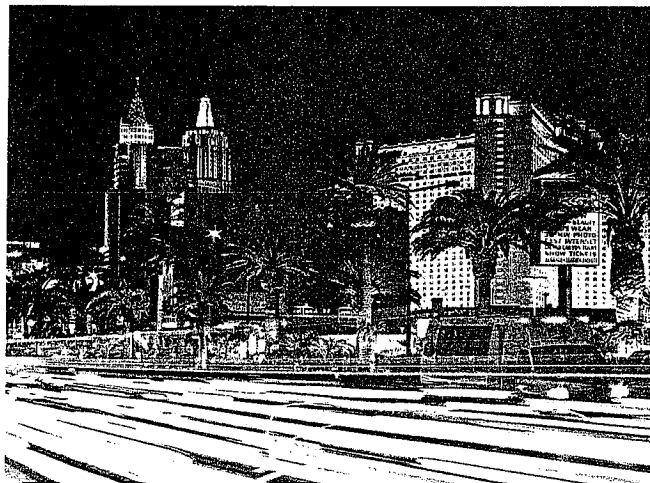
Wednesday, 10:30–11:45 a.m.

See how large-scale infill developments are changing the perception of sprawl in Las Vegas and bringing people back to the urban core. Discuss the CityCenter development project, which will put residents and commercial uses right in the heart of the Las Vegas Strip, and the 61-acre Union Park development in downtown Las Vegas. **CM | 1.25**

New Generation of Planning Support Tools (S594)

Wednesday, 10:30–11:45 a.m.

Enhancements in web, 3D, and GIS technologies may aid decision making in the planning process through the use of simulations, sketch planning, and other planning support systems. Explore the potential application and role of sketch planning and a new generation of tools in the context of modern planning practice. **CM | 1.25**



Energy Planning Track

Energy conservation and renewable energy production are at the top of list of strategies to reduce climate change. What have we learned about planning for energy and what challenges remain? Explore how planning is becoming involved in alternate sources of energy production. From the personal to the global perspective, find out how to tackle this important issue.

Integrating Clean Energy into Planning (S439)

Monday, 2:30–3:45 p.m.
See page 14.

Energy Planning (S452)
Monday, 4:00–5:15 p.m.
See page 18.

Making Energy a Primary Issue (S515)
Tuesday, 1:30–2:45 p.m.
See page 28.

Renewable Energy Planning in Northern Mexico (S539)
Tuesday, 3:00–4:15 p.m.
See page 30.

Rebuilding Coastal Communities with Clean Energy (S598)
Wednesday, 10:30–11:45 a.m.
See page 38.

Carbon Footprint Reduction through Design (S607)

Wednesday, 2:30–3:45 p.m.
See page 39.

Responding to Peak Oil and Energy Uncertainty (S639)
Wednesday, 4:00–5:15 p.m.
See page 42.

The New Neighborhood Utilities (S658)
Thursday, 8:00–9:15 a.m.
See page 45.

Permitting and Standards for Wind Power (S665)
Thursday, 9:30–10:45 a.m.
See page 46.

Offsetting a Lack of Grocery Chain Access (S595)

Wednesday, 10:30–11:45 a.m.

Learn the extent to which urban low- to moderate-income neighborhoods lack access to grocery chains, fair prices, and quality products. Examine why “bodega” grocers in Philadelphia improved products and services, and see how GIS systems can identify and quantify areas being underserved. **CM | 1.25**

Planning in China: Innovations and Challenges (S597)

Wednesday, 10:30–11:45 a.m.

Hear an update on the general issues and conditions of planning in China. Case studies include Zhenjiang, a city that updated and expanded garden city concepts; another focuses on a collaboration with the landscape management system. Explore APA’s collaboration with the Tulane program and the Shanghai Academy of Social Sciences. **CM | 1.25**

Rebuilding Coastal Communities with Clean Energy (S598)

Wednesday, 10:30–11:45 a.m.

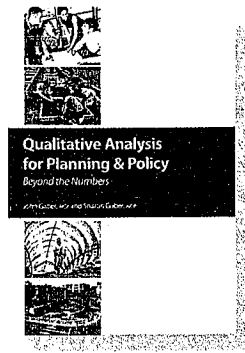
Consider approaches to promoting regional energy awareness and solutions as an important component to disaster recovery. Efforts toward infusing and institutionalizing renewable energy and energy-efficient technologies into long-term redevelopment of the Mississippi Gulf Coast are presented as a case study for replication in other communities. **CM | 1.25**

ANALYZE

Qualitative Analysis for Planning & Policy

Techniques to reveal the big picture

Available at [APA's Planningbooks.com](http://APA'sPlanningbooks.com)



Reinventing Indiana’s Entire Lake Michigan Shoreline (S599)

Wednesday, 10:30–11:45 a.m.

The Marquette Plan envisions a new future for Indiana’s Lake Michigan shoreline as it evolves from its industrial past into a future that balances industry, economic development, and the environment. Hear how stakeholders, unaccustomed to working together, identified principles and projects now being implemented and leveraged additional reinvestment capital and support. **CM | 1.25**

Revitalization of the Historic Small City (S600)

Wednesday, 10:30–11:45 a.m.

The redevelopment plan for this 150-acre brownfield in an auto-oriented Wyoming district successfully applies principles of smart growth and historical urban form to the community building process. Explore Casper’s smart growth strategy in a conservative land-use environment as well as challenges in land acquisition, public participation, jurisdictional support, and implementation. **CM | 1.25**

Sustainable Water Resource Management (S601)

Wednesday, 10:30–11:45 a.m.

Explore the challenges of sustainable water resource management in the growing 495/MetroWest Corridor in Boston. Discover innovative water management techniques that address stormwater, water supply, and wastewater issues. Case studies address low impact development, water reuse, and seasonal peak water demand, focusing on successful implementation, challenges, and obstacles. **CM | 1.25**

The Spring Mountain Master Planned Community (S602)

Wednesday, 10:30–11:45 a.m.

Discover Spring Mountain, a master planned community north of Reno that will cover 6,105 acres and include two million square feet of nonresidential development and 12,000 housing units. It has generated much political interest as it introduced cutting-edge concepts to northern Nevada, including internal trip-capture monitoring and mitigation and sustainability practices. **CM | 1.25**

Qualitative Analysis for Planning and Policy (S579)

Wednesday, 10:30–11:45 a.m.

Numbers don’t always tell the whole story. Qualitative analysis, which yields data in words and images, can fill in details crucial to understanding a project or policy. Learn how to use field research, photography, focus groups, content analysis, and meta-analysis to develop compelling data for a variety of planning issues. Find out how to integrate these methods with more traditional quantitative research. **CM | 1.25**

The Ultimate Model Smart Growth Code (S603)

Wednesday, 10:30–11:45 a.m.

Communities revising their zoning ordinances ask smart growth advocates, “What’s the best code to use?” Examine the relevance and importance for determining a distinct and suitable answer. EPA researchers discuss the process and findings of this unique and potentially controversial endeavor. **CM | 1.25**

Urban-Rural Links in Agricultural Preservation (S604)

Wednesday, 10:30–11:45 a.m.

Agricultural preservation means saving the farm, not just farmland. Hear why sustaining viable farm economies in Putnam County, New York, the Central Valley in California, and Montgomery County, Maryland, is inseparable from preserving farmland and working landscapes. Make key stops—from farm to urban core, from urban edge to agricultural hinterland—and explore the issue of food systems security along the way. **CM | 1.25**

Why Can't Everyone Ride the Bus? (S605)

Wednesday, 10:30–11:45 a.m.

School transportation and transportation systems for seniors and the disabled have long existed as separate entities with specific vehicle specifications. The lack of compatible fleets is an extreme barrier to transportation coordination. Learn from a national award-winning rural system administrator how to successfully overcome these legal and regulatory barriers. **CM | 1.25**

Yesterday's Suburban Corridor, Today's Main Street (S606)

Wednesday, 10:30–11:45 a.m.

Fighting the negative impacts of development and institutional growth, neighborhoods lose opportunities to define benefits and minimize costs. Learn how the Clifton Community Partnership is transforming automobile-dominated arterials into sustainable, pedestrian-friendly main streets with expanded housing and transportation options. **CM | 1.25**

Awards Luncheon (P004)

Wednesday, noon–2:30 p.m.

See page 68 for details.

Carbon Footprint Reduction Through Design (S607)

Wednesday, 2:30–3:45 p.m.

Neighborhood design can influence energy consumption and the carbon dioxide emissions that cause global climate change. By integrating building and site design, transportation, and utility infrastructure a neighborhood can dramatically reduce its carbon footprint. Review national examples that illustrate how design strategies can support nonmotorized transportation and reduce energy consumption. **CM | 1.25**

Creative and Inclusive Planning Alternatives (S608)

Wednesday, 2:30–3:45 p.m.

Examine best practice case studies where anti-immigrant ordinances, proposed against Latino communities, were defeated or avoided. See how this resulted in more inclusive and creative solutions that bridge the economic, cultural, and political gaps between how the Hispanic immigrant "problem" is perceived by the governing group and the Latino communities. **CM | 1.25**

Federal Changes Influencing TOD/JD (S609)

Wednesday, 2:30–3:45 p.m.

Get the federal perspective on transit-oriented development and joint development. Find out what's eligible for funding, how the procurement process works, ways to leverage dollars, and how to develop partnerships. Learn how changes to SAFETEA-LU and the FTA's guidelines might affect TOD and JD projects of all sizes. **CM | 1.25**

Green Community Indicators, Diagnostic Methods, and Programs (S610)

Wednesday, 2:30–3:45 p.m.

A variety of approaches can guide communities in their effort to become greener. From LEED-ND, to the National Association of Counties sustainability indicator program, to simple checklists, communities are figuring out where they stand. This session looks at the pros and cons of different approaches and offers a look at APA's tools and techniques. **CM | 1.25**



Green Communities in the Desert Track

Can communities in desert locations develop environmental sustainability? Learn about innovative approaches to conservation and resource protection. Look forward to see how climate change will affect vast regions of America served by western water. Learn what is being done today to sustain the environment and accommodate the demand for growth.

Planning New Towns in the Desert (S412)

Monday, 10:30–11:45 a.m.
See page 14.

A Bioclimatic Systems Approach to Development (S448)

Monday, 4:00–5:15 p.m.
See page 18.

AICP Symposium: Placemaking (S505)

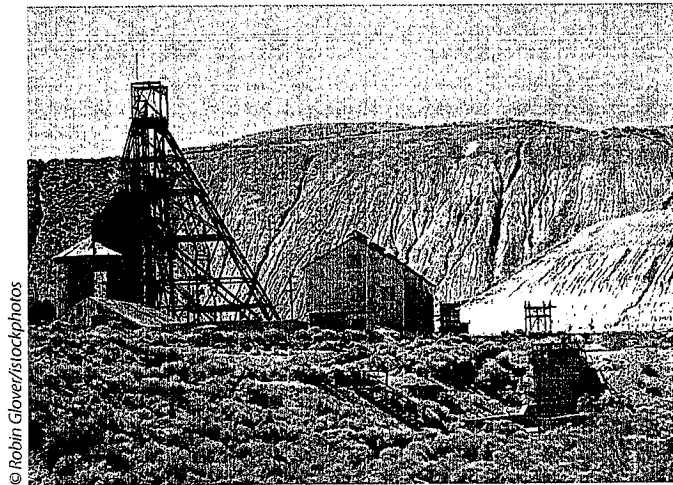
Tuesday, 1:30–2:45 p.m.
See page 26.

Sustainable Development for Desert Climates (S523)

Tuesday, 3:00–4:15 p.m.
See page 29.

Climate Change in the Interior West (S572)

Wednesday, 9:00–10:15 a.m.
See page 35.



© Robin Glover/istockphotos

Small Town and Rural Planning Track

Focus on the unique challenges of small towns and rural areas, whether it's rapid growth or a changing economy. Sessions address planning coordination, allocation of planning resources, economic opportunities, and how nonurban places maintain character.

Form-Based Codes for Small Towns (S406)

Monday, 10:30–11:45 a.m.
See page 14.

Technology as a Tool for Planning (S461)

Monday, 4:00–5:15 p.m.
See page 18.

Trying for Balance in Rural Development (S502)

Tuesday, 11:00 a.m.–12:15 p.m.
See page 26.

Small and Rural Area Transit Operations (S582)

Wednesday, 9:00–10:15 a.m.
See page 35.

Maintaining Rural Character in Fast-Growing Alaska (S592)

Wednesday, 10:30–11:45 a.m.
See page 37.

Tools for Building Sustainable Communities (S624)

Wednesday, 2:30–3:45 p.m.
See page 41.

RPOs and Rural Transportation Planning (S637)

Wednesday, 4:00–5:15 p.m.
See page 42.

Making Things Happen in Small Towns (S655)

Thursday, 8:00–9:15 a.m.
See page 45.

Rural Land Stewardship (S622)

Thursday, 9:30–10:45 a.m.
See page 45.

Improving Walkability Through Safety (S611)

Wednesday, 2:30–3:45 p.m.

As the U.S. population ages, improving mobility for residents has become a priority. Examine how rising gas prices and a desire for more livable neighborhoods are adding pressure to improve walkability for all. Hear from experts about how pedestrian safety action plans can improve walking conditions. **CM | 1.25**

Indian Creek Revitalization Project (S612)

Wednesday, 2:30–3:45 p.m.

Caldwell, Idaho, is making waves renovating its central business district and redeveloping a dilapidated neighborhood built over a covered creek. Learn how to expose a closed watershed and use it as an amenity, utilize smart growth principles, incorporate LEED building standards, and create eye-catching streetscape designs in your central business district. **CM | 1.25**

Integrating Hazard Reduction Into Sustainability Strategies (S613)

Wednesday, 2:30–3:45 p.m.

Explore the experiences of two cities—St. George City, Utah, and Seattle—that used science-based criteria to implement safe growth and sustainability goals. The jurisdictions reduced flood and landslide losses by incorporating hazard information into planning and development processes. Learn how GIS integrated and communicated hazard information. **CM | 1.25**

Metropolitan Urban Development in Mexico (S614)

Wednesday, 2:30–3:45 p.m.

Mexico is characterized by economic and social concentration in its fast-growing metropolitan areas. Hear from the state and metropolitan authority of the second-largest Mexican city (3.8 million inhabitants) as it presents its experiences in the intergovernmental coordination of the metropolitan plan of Monterrey. **CM | 1.25**

Open Mike: Is Growth Ever Free? (S615)

Wednesday, 2:30–3:45 p.m.

Questions concerning paying for growth will be posed to the panel. Following a concise panel response to the question, the audience is invited to respond with its insights, experiences, and opinions. This fast-paced discussion will allow the presenters and the audience to engage over this critical issue. **CM | 1.25**

Planning Shared Campuses (S616)

Wednesday, 2:30–3:45 p.m.

Identify issues and discuss successful solutions related to shared campuses and joint-use facilities through an examination of North Idaho's Center for Higher Education in Coeur d'Alene. Explore strategies for handling institutional politics and marketing joint facilities to decision makers and donors. Consider the planning, design, and facilitation involved in the process. **CM | 1.25**

Strategies for Combating Encroachment (S617)

Wednesday, 2:30–3:45 p.m.

Learn from the experiences of military representatives and community planners in the forefront of encroachment planning efforts at Ft. Benning, Georgia, NAS Oceana in Virginia, and Nellis AFB in Nevada. Join panelists as they discuss lessons learned, challenges in moving forward, and successful methods for working together in the land-use arena. **CM | 1.25**

Providing Affordable Housing in Resort Communities (S618)

Wednesday, 2:30–3:45 p.m.

Skyrocketing housing prices are no longer confined to cities like New York City, San Francisco, and Washington, D.C. Fast-growing resort communities are facing a crisis in housing affordability as well. Discover how affordable housing is provided in selected foreign markets and explore ways to increase affordable housing opportunities in the U.S. **CM | 1.25**

Recruiting and Retaining Planners of Color (S619)

Wednesday, 2:30–3:45 p.m.

Discover the value of increasing diversity in the planning profession and the approaches under way through APA since the diversity summit in 2004. Learn strategies to increase the pipeline of minority-race individuals entering college and university planning programs and to enhance recruitment and retention efforts in planning offices. *Sponsor: Planning and the Black Community Division.* **CM | 1.25**

Regulating Sex in the County (S620)

Wednesday, 2:30–3:45 p.m.

Many sex businesses are located in unincorporated areas. Learn how to effectively regulate sex businesses in your county or city using techniques for revising zoning and licensing ordinances, and obtain a checklist for avoiding regulatory pitfalls. *Sponsor: County Planning Division.* **CM | 1.25**

Responding to Chronic Land-Use Disputes (S621)

Wednesday, 2:30–3:45 p.m.

Land-use disputes are chronic and inevitable. Hear the latest research from the Public Policy Institute and the Consensus Building Institute on how states and communities moved beyond the ad hoc, case-by-case use of negotiation, mediation, and other collaborative methods to create programs or systems to prevent and resolve such disputes. Review best practices. **CM | 1.25**

Site Development Review on Native Lands (S623)

Wednesday, 2:30–3:45 p.m.

Learn to bridge community needs, identify tribal priorities, and preserve tribal and cultural resources and assets through a tribal-specific site development review process. Site planning in pueblos is a unique circumstance requiring special techniques. This process must be a germane match with current forms of tribal self-governance and other political factors. **CM | 1.25**

Tools for Building Sustainable Communities (S624)

Wednesday, 2:30–3:45 p.m.

The Green Valley Institute and the Borderlands Project are promoting sustainable growth patterns in rural New England. Hear about the groups' unique educational and collaborative approaches, including the use of charrettes, the promotion of innovative conservation and development techniques, and use of web-based tools to facilitate natural resource-based planning. **CM | 1.25**

Trends in Historic/Adaptive Reuse (S625)

Wednesday, 2:30–3:45 p.m.

Huge demographic shifts are expected to continue the resurgence in historical and cultural preservation, especially given its ability to maintain a sense of place and perspective. Examine the incentives and tools that can be used to redevelop and rehabilitate aging housing and commercial/industrial stock to reenergize neighborhoods in cities large and small. **CM | 1.25**

Aging in Place (S628)

Wednesday, 2:30–3:45 p.m.

The aging of America is impacting individuals, households, and communities. Discover how we can effectively plan for this change in order to promote the benefits of an aging society while limiting the consequences. Designing and redesigning our homes and communities is essential so all can benefit. **CM | 1.25**

New Zoning Techniques Using GIS (S626)

Wednesday, 2:30–3:45 p.m.

Since Baltimore's zoning code was written in 1971, new regulatory techniques evolved to eliminate obsolete and unwanted code provisions. Learn how GIS is used to diagnose the old code and create spatial data that shows how new zoning techniques (i.e. form-based codes) could achieve policy objectives. *Sponsor: Technology Division.* **CM | 1.25**

PLANNING COMMISSIONER AND APPOINTED OFFICIAL SESSION

From Soup to Nuts: Paying for Growth (S105)

Wednesday, 4:00–5:15 p.m.

There is considerable awareness regarding the impact of new growth on the provision of infrastructure and adequate levels of service. However, there is considerable debate regarding whether growth pays for itself. Examine the fiscal equation of land uses and their impact on revenues, capital costs, and operating expenses.

Built Environments for Active Living Abroad (S627)

Wednesday, 4:00–5:15 p.m.

Learn about Australia's Healthy Spaces and Places: National Planning Guidelines as well as programs in other countries that promote built environments for active living. These projects address how the built environment can keep health care affordable, address wellness and obesity, and encourage healthy aging by promoting active living for all ages and fostering social capital and sense of community. **CM | 1.25**

Applying Technology to Prioritize Redevelopment (S629)

Wednesday, 4:00–5:15 p.m.

Local governments nationwide are plagued by vacant properties that are not only eyesores but may pose environmental and economic liabilities. To improve these sites, local governments should know what (including location) made them seemingly undevelopable. View demonstrations of technologies to develop an inventory of vacant sites and prioritize them for redevelopment. **CM | 1.25**

Development Solutions in Karst Regions (S630)

Wednesday, 4:00–5:15 p.m.

Karst, the most environmentally sensitive type of landscape, typically contains sinkholes, springs, underground streams, and caves. Land development presents unique challenges in karst terrain and education is key to a successful land-use planning process. Discover how communities, planners, developers, and karst specialists jointly find solutions when karst and development coincide. **CM | 1.25**

Enhancing Sustainability in Smart Growth Developments (S631)

Wednesday, 4:00–5:15 p.m.

Explore opportunities for new urbanist and smart growth developments to improve sustainability at the ground level by incorporating creative landscape principles that mitigate, on-site, the impacts from the resulting urbanization. Leave the session with tangible take-home messages that can better inform planning and design decisions at all levels. **CM | 1.25**

Establishing Megaregional Transportation Priorities (S632)

Wednesday, 4:00–5:15 p.m.

Explore the current status of transportation infrastructure, and learn how to implement innovative planning strategies for the future. Take a look at how communities are planning for future population growth. Review potential regional strategies and how megaregions can provide a scale at which to establish transportation priorities. **CM | 1.25**

Farming and Endangered Species (S633)

Wednesday, 4:00–5:15 p.m.

Explore the development of the San Diego County Farming Program Plan, a government/nonprofit collaboration to conserve agriculture and protect endangered species in an urban region. Learn how to compatibly address these and related planning issues, as well as how to effectively engage the public and stakeholders in developing broad-based solutions. **CM | 1.25**

Is a Form-Based Code Right for Your Community? (S634)

Wednesday, 4:00–5:15 p.m.

Form-based codes (FBC) are gaining popularity as a way of implementing principles of smart growth. But some planners are frustrated by a disparity of enabling legislation or blending with the local regulatory framework. Learn FBC fundamentals and how planners are dealing with their adoption and administration. *Sponsor: New Urbanism Division.* **CM | 1.25**

How to Protect Local Character (S635)

Wednesday, 4:00–5:15 p.m.

Whether big city or small town, our communities are made up of a collection of individual residential neighborhoods. Hear case studies from North Carolina and Texas. How can we save local character and meet the needs of minority populations? **CM | 1.25**

Indigenous Planning 101 (S636)

Wednesday, 4:00–5:15 p.m.

Explore the origin, history, and application of indigenous planning principles. Hear from practitioners about emerging trends and new legal, political, and economic approaches to indigenous community development. *Sponsor: Indigenous Planning Division.* **CM | 1.25**

RPOs and Rural Transportation Planning (S637)

Wednesday, 4:00–5:15 p.m.

The use of regional rural transportation planning has increased since the 1990s. Learn how three rural planning organizations in South Carolina, Utah, and Wisconsin are collaborating with regional partners and contracting with state agencies to provide quality planning. **CM | 1.25**

Reflections on Climate Change and Big City Planning (S638)

Wednesday, 4:00–5:15 p.m.

Hear big city planning directors respond to a climate change expert and discuss how their city's planning programs are meeting greenhouse gas and energy challenges. *Sponsors: American Planning Association, Lincoln Institute of Land Policy, and Harvard Graduate School of Design.* **CM | 1.25**

Responding to Peak Oil and Energy Uncertainty (S639)

Wednesday, 4:00–5:15 p.m.

Peak oil—the high point and subsequent decline of world oil production—and global warming pose unprecedented planning and governance challenges. Explore what the changing energy and climate context of the 21st century means for local governments and what some cities are already doing in response. **CM | 1.25**

Rethinking Sign Regulations (S640)

Wednesday, 4:00–5:15 p.m.

Sign regulations should not be arbitrary. They must fit the context and take into account the science of sign visibility and its effect on traffic safety. Hear practicing planners and sign industry representatives discuss these issues. **CM | 1.25**

Revitalization Through Affordable Housing Preservation (S641)

Wednesday, 4:00–5:15 p.m.

Many apartment complexes of the past were built without regard to amenities or livability. Learn how affordable housing can be rescued and revived through cooperation with civic leaders, major structural improvements, and specific tactics that address the neighborhood's broader socioeconomic needs. **CM | 1.25**

Sex Businesses and Social Equity (S642)

Wednesday, 4:00–5:15 p.m.

Planning intersects with sex businesses over the issue of location. With the increase in sex workers, is it time to raise this as an issue of social equity in planning? Are there other dimensions that planners and communities should be considering? **CM | 1.25**

TOD Planning in Transit-Lite Nevada Communities (S643)

Wednesday, 4:00–5:15 p.m.

Despite limited or early-stage transit systems, Nevada communities are incorporating transit-oriented development in their planning. Focus on how to build elements of TOD into your community's plans and regulations. Learn how communities implementing TOD across Nevada are addressing market and other challenges in order to benefit from future rapid transit. **CM | 1.25**

Lingle: The Other Fifth Amendment Opinion (S644)

Wednesday, 4:00–5:15 p.m.

The U.S. Supreme Court issued two fifth amendment opinions in 2005. Although often overshadowed by *Kelo v. New London*, *Lingle v. Chevron USA Inc.* has the potential to significantly impact regulatory takings litigation. This session illustrates why every community and planner should be familiar with *Lingle*. **CM | 1.25**

Trails in the Urban Context (S645)

Wednesday, 4:00–5:15 p.m.

The Las Vegas Wash Park acquisitions are a multiagency and nonprofit collaborative effort to provide trailside neighborhood parks in older, underserved neighborhoods in Las Vegas. Learn how these parks provide neighborhood recreation and access to a 20-mile regionally significant trail that transects the Las Vegas valley. **CM | 1.25**

Build your own conference to get a handle on the roles and responsibilities of the commission or to pick up tips on improving board operations. Go online to create an electronic version of the complete conference schedule for officials.

A CONFERENCE FOR PLANNING COMMISSIONERS AND OTHER OFFICIALS

WELCOME

First-Timers Orientation (S401)

Sunday, 2:00–3:00 p.m.
See page 9.

First-Timers Mixer (S673)

Sunday, 3:00–3:30 p.m.
See page 9.

BREAKFAST

Planning Commissioner and Appointed Official Breakfast (P005)

Tuesday, 6:45–8:00 a.m.
See page 68.

TRAINING WORKSHOPS

Legal Foundation of the Planning Commission (S008)

Sunday, 10:00 a.m.–noon
See page 54.

Variances, Special Uses, and Board of Adjustment Operations (S026)

Sunday, 1:00–4:00 p.m.
See page 55.

SESSIONS

The Job of the Planning Commissioner (S100)

Monday, 10:30 a.m.–noon
See page 13.

Proper Decision Making by Public Officials (S101)

Monday, 1:00–2:15 p.m.
See page 15.

The Role of Comprehensive and Other Plans (S102)

Monday, 2:30–3:45 p.m.
See page 16.

Ethics for Planning Commissions and Officials (S103)

Tuesday, 9:30–10:45 a.m.
See page 21.

Social Equity Planning for Planning Commissioners (S104)

Wednesday, 9:00–10:15 a.m.
See page 34.

PLANNING COMMISSIONER AND APPOINTED OFFICIAL SESSION

From Soup to Nuts: Paying for Growth (S105)

Wednesday, 4:00–5:15 p.m.
See page 41.

Politics and the Planning Commission (S106)

Thursday, 8:00–9:15 a.m.
See page 44.

MOBILE WORKSHOP

Mock Las Vegas Planning Commission Meeting (W041)

Tuesday, 11:15 a.m.–2:15 p.m.
See page 63.

FACILITATED DISCUSSIONS

Hot Topics for Small Towns and Rural Areas (S805)

Tuesday, 3:00–4:15 p.m.
See page 67.

Working with the Media (S807)

Tuesday, 4:30–5:45 p.m.
See page 67.

The Constitution and Performance of the Planning Commission (S809)

Wednesday, 10:30–11:45 a.m.
See page 67.

Hot Topics for Large Cities and Urban Areas (S810)

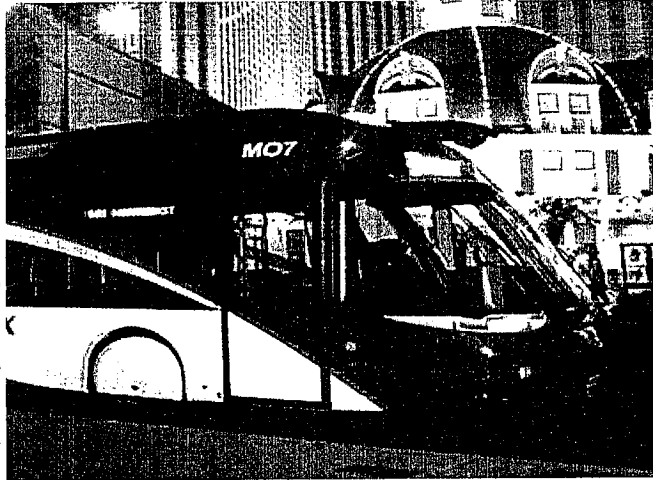
Wednesday, 2:30–3:45 p.m.
See page 67.

Hot Topics for Suburban Communities (S814)

Thursday, 9:30–10:45 a.m.
See page 67.

HOSPITALITY SUITE

Stop by the hospitality suite to meet with other officials. Facilitated discussions for planning commissioners and appointed officials will also be held in the suite.



"IT'S GREAT TO HEAR WHAT'S WORKING FOR OTHERS."

—Past conference attendee

THURSDAY

Transportation for

Tomorrow's Population Track

Today's communities are faced with an aging population and aging transportation infrastructure. In this context, new alternatives to automotive transportation are regularly part of transportation agendas. How are communities taking advantage of this open climate of transportation innovation and reconsideration to plan carefully for future populations? Sessions focus on innovative plans, regional strategies, surprising successes, and proven approaches for forward-looking transportation planning.

Modal Choice in Transportation Decision Making (S409)

Monday, 10:30–11:45 a.m.
See page 14.

Sustainable Transportation (S479)

Tuesday, 9:30–10:45 a.m.
See page 23.

Urban Design and Transportation Planning in L.A. (S504)

Tuesday, 11:00 a.m.–12:15 p.m.
See page 26.

Solving Congestion and Improving Mobility (S541)

Tuesday, 3:00–4:15 p.m.
See page 30.

The Indianapolis Cultural Trail (S584)

Wednesday, 9:00–10:15 a.m.
See page 36.

Why Can't Everyone Ride the Bus? (S605)

Wednesday, 10:30–11:45 a.m.
See page 39.

Improving Walkability through Safety (S611)

Wednesday, 2:30–3:45 p.m.
See page 40.

Establishing Megaregional Transportation Priorities (S632)

Wednesday, 4:00–5:15 p.m.
See page 42.

Transforming Major Urban Thoroughfares (S660)

Thursday, 9:30–10:45 a.m.
See page 45.

THURSDAY, MAY 1

Politics and the Planning Commission (S106)

Thursday, 8:00–9:15 a.m.

Learn how the planning commission interacts with the governing body. Panelists discuss how planning commissioners and planners may move into political positions of authority and spread good planning. Whether you are looking for ways to respond appropriately to political pressure or are considering running for office and becoming politically active, you can gain tips, insights, and strategy in this session.

The Lighter Side of Planning Challenges (S646)

Thursday, 8:00–9:15 a.m.

It's a tough world out there for planners! Whether dealing with the public, elected officials, citizen committees, or colleagues, planners often take it on the chin. Explore how to cope with the realities of our challenging profession by taking a look at its absurdities, foibles, and opportunities for making a difference.

CM | 1.25

Assessing Housing Needs Using GIS (S647)

Thursday, 8:00–9:15 a.m.

Learn about a redevelopment strategy to improve living conditions and discourage blight in a rapidly growing Southern California community. Hear how Lancaster used GIS technology and public and private datasets to complete a Housing Needs Assessment for key redevelopment areas and provided better analysis and decision support to city leaders. **CM | 1.25**

Community Planning Tools for Wildfire Safety (S648)

Thursday, 8:00–9:15 a.m.

The 2007 California fires are over, yet growth continues in the nation's wild and rural areas, putting homes and neighborhoods at risk. Learn to design safer communities using Firewise principles. Learn about design standards for fire protection in rural areas. Receive guidance for building wildfire safety into subdivision design and maintenance. **CM | 1.25**

Creating School Sites in New Jersey (S649)

Thursday, 8:00–9:15 a.m.

Creating sites for new schools in older cities is a massive project in property redevelopment. Questions of social and environmental justice arise when officials are faced with condemning homes or former factory sites. **CM | 1.25**

Sweden's Approach to Eco-Municipalities (S650)

Thursday, 8:00–9:15 a.m.

Sweden is one of the most socially responsible nations in the global economy. Learn how Sweden went about developing sustainable eco-municipalities and the challenges and accomplishments working with citizens, businesses, municipalities, organizations, and communities. *Sponsor: International Division.* **CM | 1.25**

Health Issues in the General Plan (S651)

Thursday, 8:00–9:15 a.m.

Learn how to engage a culturally diverse community in health care discussions and use the results as an element in the planning process. Assess three approaches and see how they were modified. **CM | 1.25**

Historic Preservation in Carson City (S652)

Thursday, 8:00–9:15 a.m.

For 25 years, Carson City, Nevada's historic preservation ordinance has promoted community values and the public's health, safety, and general welfare by preserving, maintaining, and protecting districts, sites, buildings, and objects of significant historical, archaeological, and cultural interest. Discuss the Historic Resources Commission's role in achieving these objectives. **CM | 1.25**

Integrating Planning and Ecosystem Science (S653)

Thursday, 8:00–9:15 a.m.

Explore the environmental limitations of commonly used smart growth tools based on experiences in Pearl River County, Mississippi. Identify form-based method enhancements to better integrate natural resources with land planning. Hear from community leaders and planning experts regarding important lessons gained from this innovative ecosystem-based approach to smart growth. **CM | 1.25**

Linking Development to Water Resources (S654)

Thursday, 8:00–9:15 a.m.

New planning initiatives throughout the nation focus on the links between development and water resources—specifically drinking water and wastewater. Discover innovative approaches to balancing development needs and water resources. Maryland's Water Resources Element, the Central Nevada Water Resources Authority, and examples from other Western states are discussed. **CM | 1.25**

Making Things Happen in Small Towns (S655)

Thursday, 8:00–9:15 a.m.

The Small Town Planning Handbook promotes an economic development theory to get things happening in small towns. Learn about the six ingredients for successful economic development. Photos and anecdotes illustrate how they have been implemented in Australia, New Zealand, and the U.S. **CM | 1.25**

Signage as a Cultural Amenity in Las Vegas (S656)

Thursday, 8:00–9:15 a.m.

Las Vegas, world famous for its over-the-top neon signage, has a rich history of allowing elaborate neon signs that are synonymous with the city itself. With Las Vegas Boulevard designated as a scenic byway, learn how signage overlay districts and sign preservation efforts contribute to this cultural resource and attraction. **CM | 1.25**

Public-Private Partnerships for Big Box Retail (S657)

Thursday, 8:00–9:15 a.m.

Collaboration between governmental agencies and private firms can be a win-win situation for both the jurisdiction and the firm. Using design guidelines and green techniques to achieve the best design possible enables both parties to meet their design objectives while meeting citizen expectations. **CM | 1.25**

The New Neighborhood Utilities (S658)

Thursday, 8:00–9:15 a.m.

A new trend is emerging—neighborhood-scale energy utilities. Learn about a combined heat and power wastewater plant in Minneapolis and a sewage heat recovery utility in Vancouver. Discover how creating this new type of utility can help meet greenhouse gas reduction goals. **CM | 1.25**

Transportation in Urban Design (S659)

Thursday, 8:00–9:15 a.m.

Traffic is both a measure of success and a cause of failure for great urban spaces. When transportation issues are not addressed effectively in the design process, urban design is often relegated to median landscaping treatments. Leave armed with fundamental insights into traffic engineering that will allow for more integrated design solutions. **CM | 1.25**

Rural Land Stewardship (S622)

Thursday, 8:00–9:15 a.m.

Explore Florida's Rural Land Stewardship Program and its implementation in the form of new sustainable communities. Learn this innovative approach to protecting agricultural and natural resource lands and directing smart growth to less sensitive, more suitable locations. Environmental and economic benefits and current statewide applications are illustrated. **CM | 1.25**

Transforming Major Urban Thoroughfares (S660)

Thursday, 9:30–10:45 a.m.

Context Sensitive Solutions in Designing Major Urban Thoroughfares for Walkable Communities demonstrates how to design context-sensitive urban arterials. Hear the authors present the new recommended practice and the step-by-step mechanics of developing great context-sensitive streets for your community. **CM | 1.25**

Influencing Recovery and Rebuilding (S661)

Thursday, 9:30–10:45 a.m.

Can planners really influence the need for communities to recover and rebuild from disasters? A growing number of studies in the aftermath of the North Dakota floods prove the answer to be affirmative. Hear different viewpoints, examine best cases, walk away with implementation tools, and decide for yourself. **CM | 1.25**

Creative Infrastructure Planning and Funding Techniques (S662)

Thursday, 9:30–10:45 a.m.

Public jurisdictions and private utilities must plan cooperatively to provide adequate funding to accommodate strategic growth. Hear how changing demographic patterns will place added stress on aging infrastructure, necessitating active public involvement and private investments. **CM | 1.25**

Effective Planning Partnerships in Mississippi (S663)

Thursday, 9:30–10:45 a.m.

Learn how intergovernmental and collaborative partnerships drive economic development and community revitalization in Mississippi. Case studies provide examples of how planners use regional and local opportunities to improve quality of life. Hear how these projects in both economic centers and distressed neighborhoods resulted in successful joint ventures and positive community impacts. **CM | 1.25**

Green Area Ratio Site Sustainability Metric (S664)

Thursday, 9:30–10:45 a.m.

Developed for Berlin, Germany, the Green Area Ratio (GAR) is being implemented in the U.S. As a performance standard, GAR establishes the minimum percentage of each property—greening targets—that must be dedicated to green infrastructure. Hear a critical assessment of the GAR policy instrument and its U.S. implementation. **CM | 1.25**

Permitting and Standards for Wind Power (S665)

Thursday, 9:30–10:45 a.m.

Small-scale wind turbines can generate substantial energy in moderate winds. New models can be mounted on rooftops, light poles, and even in backyards. As energy prices and environmental concern drive interest in alternative energy, where can wind turbines fit in urban environments, and what standards are needed to ensure compatibility? **CM | 1.25**

Streamlining Transportation Decision Making (S666)

Thursday, 9:30–10:45 a.m.

Better transportation decision making depends on goal-oriented, robust and integrated transportation planning, and project development processes. Learn from the Federal Highway Administration and the EPA how the Planning and Environment Linkages umbrella approach streamlines project development and environmental review by encouraging an integrated systems perspective that supports community goals. Learn about regulations, tools, and processes that sustain PEL. **CM | 1.25**

TODs in Los Angeles (S667)

Thursday, 9:30–10:45 a.m.

Targeted transit improvements are often credited with creating compact, mixed use districts. What often is missed is how government agencies must weigh the social benefits and costs—the balance between quality of life enhancements that accompany TODs with preservation and production of affordable housing within them. **CM | 1.25**

The ABCs of RFPs and RFQs (S668)

Thursday, 9:30–10:45 a.m.

What's the difference between an RFP and an RFQ? When do public agencies use them? How should consultants evaluate when to respond—or not? Session presenters will share the secrets to excellent RFPs and RFQs and tell “war stories” based on their years of in-depth experience. Sponsor: Private Practice Division. **CM | 1.25**

Urban Metabolism and Sustainable Development (S669)

Thursday, 9:30–10:45 a.m.

Explore variations of sustainable development—managing the built environment to reduce environmental, financial, and social impacts. The first examines a standard for rating green buildings; the second, a systems-modeling approach used in New Orleans for understanding and managing the “urban metabolism” of an entire city. **CM | 1.25**

Using Collective Data to Allocate Resources (S670)

Thursday, 9:30–10:45 a.m.

Las Vegas has created local partnerships with law enforcement and interlocal agencies to create a shared central repository of data on crime, demographics, and calls for service. Learn how the data are used to identify areas of concern, allocate appropriate resources, and measure the outcomes of public initiatives. **CM | 1.25**

Working with Freight in Urban Environments (S671)

Thursday, 9:30–10:45 a.m.

Planning for freight is challenging. Identifying and working with key stakeholders and understanding the needs and importance of freight are key steps to smoother deliveries. Hear how planners from urban areas are working with the freight industry, incorporating freight into future plans, and addressing today's needs. **CM | 1.25**

Closing Keynote (S703)

Thursday, 11:00 a.m.–12:30 p.m.

See page 47. **CM | 1**

A bold vision, a fresh look. Keynote addresses shake you out of the workaday routine. Kick off the conference with the executive director of UN-HABITAT; end it with a look at a seminal planning book. In between get new perspectives on policy and world planning.

KEYNOTES

OPENING KEYNOTE

Monday, 8:30-10:15 a.m.

ANNA TIBAIJUKA | Urban Planning and Sustainable Urban Development: Issues for American Planners (S700)

Anna Tibaijuka is the first African woman elected by the UN General Assembly to serve as under-secretary-general and executive director of a United Nations program. A Tanzanian national, she was educated at the Swedish University of Agricultural Science in Uppsala.

As the executive director of UN-HABITAT she is credited with promoting water, sanitation, and slum upgrading and in placing urban poverty high on the global development agenda. She served as a member of the Commission for Africa and is currently a member of the World Health Organization Commission on the Social Determinants of Health and the Commission on the Legal Empowerment of the Poor. She is the winner of several awards, including honorary doctorate degrees conferred by the University of McGill in Canada, University College London, and Herriot Watt in Scotland. She is a foreign member of the Royal Swedish Academy of Agriculture and Forestry and the International Center for Tropical Agriculture.

She founded the Tanzanian National Women's Council to promote women's economic and social rights, and the Barbro Johansson Girls' Education Trust, which advocates for quality education for poor girls in Tanzania and Africa.

She supports planning and challenges planners. She and APA's Executive Director, Paul Farmer, were co-presenters of the keynote address at the 2007 Royal Town Planning Institute's Annual Convention in London. She is credited with placing planning issues at the center of the 2006 World Urban Forum in Vancouver.

POLICY KEYNOTE

Tuesday, 8:15-9:15 a.m.

JACK DANGERMOND | Creating Our Future—The Geographic Approach (S701)

WORLD PLANNING KEYNOTE

Wednesday, 7:45-8:45 a.m.

ROBERT HUNTER, FAICP; JANET O'NEILL; BLAKE HUDEMA; SHI HEPING | Global Planning, Local Results (S702)

How can global partnerships help planners achieve real results at home? Hear from the Royal Town Planning Institute's incoming president, Janet O'Neill, the Canadian Institute of Planners president, Blake Hudema, and APA President Robert Hunter, FAICP, who have partnered to create the Global Planners Network. Then find out how the New Garden City concept is helping China meet the challenges of urbanization from Shi Heping, party secretary of Zhenjiang, who is working with APA to promote the concept in Chinese cities.

CLOSING KEYNOTE

Thursday, 11:00 a.m.-12:30 p.m.

PAUL GOLDBERGER | Learning Anew from Las Vegas (S703)

Paul Goldberger, architectural critic for *The New Yorker* and author of the Pulitzer prize-winning book *Up From Zero*, leads a discussion on lessons learned from the contemporary entertainment city. Goldberger is also the Joseph Urban Professor of Design and Architecture at The New School in New York City. The starting point for the presentation is Denise Scott Brown's and Robert Venturi's seminal work on the American city, *Learning from Las Vegas*. Goldberger looks back at the revelations of the 1977 book and measures them against the city of today. Hear what he has to say about where the American city may be headed.

A Data Model for Concurrency Management (S328)

Using a data model created for the Florida Department of Community Affairs, this poster examines how local governments can benefit by using the versatile resources of GIS to manage concurrency.

A Master Plan for Public Safety (S301)

Examine how the Public Safety Facilities Master Plan for Prince George's County, Maryland, addresses new police, fire, and emergency medical facilities and services needed to keep this growing community safe.

An Economic Atlas for Indiana (S302)

Improve your understanding of regional economic indicators and using, interpreting, and applying data from GIS mapping in this discussion of the economic atlas for Indiana developed at Purdue University.

Capacity Building for Metropolitan Transportation Decision Makers (S303)

How can experts educate decision makers on complex transportation issues? Florida's Metropolitan Planning Advisory Council shares successful techniques used in its comprehensive transportation policy and planning training program for elected officials.

Coding for Sustainability Using LEED Standards (S304)

Learn the criteria, methods, and language for creating form-based codes that incorporate LEED standards and promote new urban design for construction that is more compact, efficient, economical, and environmentally sustainable.

Context-Sensitive Design for Community Roadways (S305)

In historic Franklin, Tennessee, improving the Mack Hatcher Parkway involved more than safety and mobility. See how visionary stakeholders used context-sensitive design for a roadway that drives community character.

Corridor Management Plan Demonstration (S306)

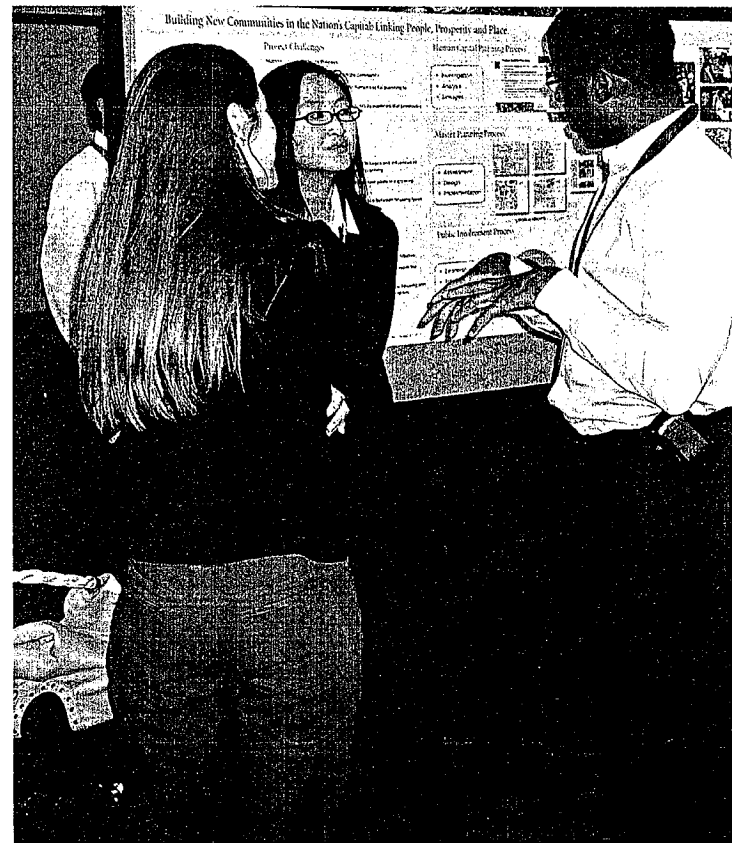
Examine how the California DOT incorporated state-of-the-art operational analysis into a traditional planning process to develop phased and integrated corridor management designed to improve congested urban roadways.

Creating a Champion Corridor in Southeast Michigan (S307)

Consider a study of the Southeast Michigan transit corridor between Detroit and Ann Arbor that paves the way for a transit network offering significant growth opportunities in industry, business, and tourism.

Engaging Community Stakeholders in Brownfield Redevelopment (S308)

Brownfields are opportunities, not liabilities. Learn to engage CDCs and other community-based stakeholders in creating strategies for brownfield redevelopment projects.



Hazard Mitigation in Native Alaskan Communities (S309)

Examine innovative approaches for creating hazard mitigation plans in native Alaskan communities where underdeveloped resources and infrastructure, subsistence lifestyle, and severe weather pose challenges in avoiding or minimizing future disasters.

Identifying Suitable Growth Potential (S310)

Discover how a suitability study helped Pflugerville, Texas, a city with a growing population but no room for commercial development, evaluate whether a new commercial corridor offered appropriate growth potential.

Implementing Infill (S311)

Charlottesville, Virginia, planners tackled infill redevelopment in the city's 2001 comprehensive plan. Now they share their valuable experience on how to promote infill and avoid mistakes.

Innovative Solutions for Fiscal Sustainability (S312)

The bridge collapse in Minneapolis. The steam pipe explosion in New York. How can municipalities afford to maintain their infrastructure? Innovative strategies from three U.S. cities offer new solutions for old problems.

Living Wall Noise Barriers (S313)

Green design highway noise barriers have both aesthetic and ecological advantages. Learn how planners in Farmington Hills, Michigan, are using study results to plan the first living wall along a U.S. city highway.

Posters encapsulate new research and successful projects in graphic presentations. Get a look at what colleagues around the country are working on and see how students are bringing fresh ideas to the field. Posters are on display throughout the conference, Monday–Wednesday, in the exhibit hall.

Stop by the Planning Expo to see the posters and talk with their creators Tuesday from noon to 2:30 p.m.

© Edward Savaria, Jr.

POSTERS

Local Transit Funding: Strategies for Success (S314)

Not all public transportation projects qualify for federal funding. This poster provides a comprehensive look at projects that both succeeded and failed to secure local transit funding, and recommends strategies and methodologies for successful local funding measures.

Mapping Projected Impacts of Climate Changes (S315)

Examining an area pressured by suburban sprawl, this poster focuses on how climate change may impact land-use policies in Prince George's County, Maryland.

Neighborhood Leadership Institute: Pilot Your City (S316)

See how 30 citizens participating in the Neighborhood Leadership Institute's Pilot Your City program in Charlottesville, Virginia, initiated projects that continue to benefit their community.

Park-and-Ride Planning Strategies (S317)

See how the city of Ann Arbor, Michigan, is taking its popular park-and-ride program to a new level of service to meet the transit demands of a growing population.

Planning, Public Participation, and Practice (S318)

Bridging the gap between theory and practice, this poster uses the Discursive Standards Criteria as a model to help planners encourage and manage public participation in community-based environmental planning.

Preservation and Prosperity: Historic Rehabilitation Tax Credits (S319)

Historic preservation is good for the economy! An analysis of Virginia's historic rehabilitation tax credit program details how investing in effective preservation policies pays off for the community, region, and state.

Purposeful Planning for Military Base Closures (S320)

When large military bases close, local communities change dramatically. See the planning techniques and funding opportunities that two communities employed to prosper after base realignment and closure.

Revitalizing and Developing the Anacostia Waterfront (S321)

Learn about the Anacostia Waterfront of Washington, D.C., and discover how collaborative, interdisciplinary planning initiatives support the goals of developing a clean and active waterfront while providing a sustainable transportation infrastructure.

Toll Roads and the NEPA Process (S322)

See how the National Environmental Protection Act process evaluates the impact of toll roads on natural and urban environments, using the proposed expansion of the Austin, Texas, toll road network as an example.

Policies and Regulations for Transportation Corridor Management (S323)

Investigate how corridor management advances transportation and growth management goals. Examine regulatory best practices and resources for developing effective ordinances.

Using GPS Data to Reduce Travel (S324)

Investigate how GPS data can assist urban planners, transportation professionals, and public officials in identifying land-use and roadway features that most effectively reduce automobile driving.

Visualizing High-Rise Developments with 3-D Models (S325)

Experience how GIS technology enables planners in Las Vegas to use interactive three-dimensional models of proposed high-rise developments to identify environmental impacts and resolve problems before development happens.

Who's Working Where? (S326)

Discover how the Prince George's County (Maryland) Planning Department uses data collection and analysis tools to learn about where residents work and how jobs impact quality of life and economic growth.

You're Invited! Neighborhood Design Day (S327)

How do you engage the public in planning? Charlottesville, Virginia, created Neighborhood Design Day, inviting citizens to participate with planners and giving them tools to impact their neighborhood's future.

STUDENT POSTERS

A Bumper Crop of Opportunities for Sustainability (S350)

Explore a proposed urban food system that examines the environmental, social, and economic elements that planners must address to influence cities to move toward equitable, ecologically responsible sustainability.

A Look at Housing in Rural Mississippi (S351)

Examine the plight of the people of rural Mississippi and explore how to identify and maximize resources for providing affordable and special needs housing to families in poor communities.

A Strategic Plan for GABA (S352)

See how a group of students experienced participatory planning as they helped the Greater Arizona Bicycling Association (GABA) develop a new strategic plan for achieving their goals and identifying growth opportunities.

Adaptive Mechanisms for Communities Under Siege (S353)

Using Palestinian communities in Jerusalem as examples, investigate how communities in conflict collide with traditional zoning patterns to create temporary urban functions in order to fulfill basic needs.

Alternate Modes of Mobility in Tobago (S354)

Traffic turmoil is not limited to cities. Explore some alternatives for the island of Tobago, where transit troubles are exacerbated by environmental issues, narrow roads, increasing tourism, and excessive vehicles.

Cohousing Among American Families Today (S355)

See basic concepts of cohousing design and how cohousing can bridge the generation gap, support a lifestyle that encourages social interaction, promote sharing of amenities, and decrease negative environmental impacts.

Communicative Planning in Revitalization Efforts (S356)

Using East Gainesville, Florida, as a model, this poster investigates the interactions between grassroots community development organizations and government agencies focused on revitalizing areas previously ignored by the planning process.

Cows in the Cul-de-Sac (S357)

Hear the case for a "public policy toolbox" of higher yield alternatives that can help governments, farmers, and the public collaborate to rebuild local food networks and sustain agricultural land uses.

Drawing People Back In: Downtown Revitalization (S358)

Zero in on innovative strategies for revitalizing downtown communities by comparing policies and programs used to draw residents, businesses, recreation, and tourism back downtown in eight mid-size U.S. cities.

Faith-Based Community Development (S359)

Policy makers have begun looking to faith-based organizations to play a greater role in strengthening communities. This poster examines the impact of faith-based community development in Huntsville, Alabama.

Farish Street District: Up From Decline (S360)

Explore the history of the Farish Street Historic District in Jackson, Mississippi, the factors that led to its decline, and possible strategies for revitalizing this once economically thriving black community.

Highway Development and Land-Use Change (S361)

What's the link between highways and land use? A study in Madison County, Alabama, investigates how major transportation routes affect conversion of undeveloped land to developed land and offers strategies for planners.

Home Maintenance Training for Low-Income Home Owners (S362)

Low-income home ownership is increasing, but a lack of funds causes home owners to defer many needed repairs. Examine the critical need to provide the basic skills they need to maintain their homes.

Housing Availability and Affordability: An Analysis (S363)

Analyze recent trends in housing availability and affordability and the impact of the Department of Defense's recent Base Realignment and Closure in Huntsville, Alabama, one of the South's fastest growing cities.

Infill Feasibility Study in Costa Mesa, California (S364)

Examine a site-by-site analysis of infill parcels in Costa Mesa, California, to better understand commercial and housing development alternatives in areas with a high concentration of vacant infill sites.

Integrating Sustainability from the Ground Up (S365)

Energy conservation and a healthy environment cannot be achieved through green design alone. See recommendations for comprehensive, sustainable industry standards that can be applied from acquisition and planning through design and construction.

Latino Urban Design Using Form-Based Codes (S366)

Investigate how using form-based codes can assist the urban Latino community in Huntington Park, California, strengthen and grow while showcasing the city's diversity and culture.

Measuring Success in Mixed Income Housing (S367)

Learn whether the demand for affordable housing, expectations for diversity, requirements for market-rate and subsidized housing, and sustainability goals are being met by mixed income communities.

Measuring Urban Green in Chicago's Trees (S368)

Learn how, based on survey results, Chicago's trees save the city nearly \$19 million a year, while reducing stormwater runoff and air pollutants.

New Uses for Aging Airports (S369)

A new international airport will soon replace the aging Berlin-Tempelhof airport. Get a close look at the airport reuse case studies from Europe and North America that planners are reviewing for Berlin.

Participatory Land Evaluation Using ALES (S370)

See how researchers worked with the Ministry of Agriculture and farmers in Dominica, West Indies, to understand agricultural land-use issues and construct an Automated Land Evaluation Systems (ALES) model.

Pedestrian Connections to Public Space (S371)

Downtown Los Angeles is experiencing an urban renaissance. Learn how planners and public agencies are strategizing to create more accessible, well-connected, and vibrant pedestrian-oriented public spaces.

Permanent Supportive Housing: Services for Stability (S372)

See how permanent supportive housing can link the homeless with appropriate services and provide stability. Examine how developments in Louisville, Kentucky, work and investigate unique incentives for encouraging this approach elsewhere.

Planning for Senior Population Growth (S373)

There's a mismatch between low- and moderate-income seniors and available affordable housing and services. Discover how local jurisdictions can address this need and how to use spatial analysis techniques to effectively allocate federal funding.

Proactive Land Use Versus Outdated Land Tenure (S374)

Based on a 10-week field research study in Veracruz, Mexico, explore the complex challenges faced by fast-growing but poor urban communities with outdated land tenure regimes.

Public Involvement in Honeycutt Creek Greenway (S375)

Public involvement is the engine that moves the plan from the shelf to the street. Learn how the community of Raleigh, North Carolina, is helping planners with the Honeycutt Creek Greenway.

Sprawl, Density, and the Urban Environment (S376)

Investigate how infill development can be an alternative to sprawl, allowing cities to use existing infrastructure more efficiently and create more vibrant, compact, and sustainable urban environments.

The Gold Line and Boyle Heights (S377)

In 2009, the Boyle Heights neighborhood of Los Angeles will get new transit service. Explore how transit-oriented development, open space, streetscape, bicycle lanes, and other issues may affect this historic community.

Urban and Nonurban Gang Prevention Tactics (S378)

Based on case studies in Trenton, Atlantic City, and Newark, New Jersey, this poster compares youth gang activities and how public officials in urban and nonurban communities develop prevention tactics.



RTPI

mediation of space · making of place

THE PLANNING CONVENTION

Changing World: Changing Place

9–11 July 2008, London

Join more than 700 delegates at the United Kingdom's premier planning event to learn from international experts about planning delivery and practice in a world of ever-increasing change.

www.theplanningconvention.co.uk

Urbanization and Health: The Negative Consequences (S379)

Living in a city could be bad for your health. Examine whether there is a correlation between urbanization, health, and poverty and how to determine a population's health and nutritional status.

Using the Past to Shape the Future (S380)

Graduate students in planning and architecture collaborated in an international workshop. See how they tackled urban redevelopment challenges and creating plans for shaping the future while preserving the past in historic Ravenna, Italy.

Wireless Telecommunications Planning (S381)

See how the telecommunications master plan for Rock Creek National Park provides a delicate balance to protect the visual landscape from excessive towers while maximizing available wireless service potential to enhance public safety.

New Directors Institute (W301)

Sunday, 7:30 a.m.–5:30 p.m.

Launched in 2005, the New Directors Institute provides planning directors with a full day of intensive training and professional reflection. The institute is specifically designed for first-time directors as well as more experienced directors who have moved into a new position with different challenges and opportunities.

**CM | 9 | \$495; \$295
conference registrants**

AICP Community Planning Workshop (W300)

Sunday, 8:00 a.m.–4:30 p.m.

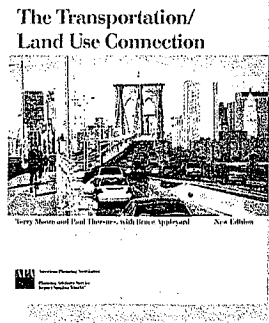
Give back to the Las Vegas community by joining planners from across the country. This pro bono collaborative planning activity focuses on West Las Vegas, centrally located within the Las Vegas Valley and immediately northwest of downtown Las Vegas. Since the 1930s, West Las Vegas was commonly referred to as the Westside and was home to a large African American population. It has experienced disinvestments in property, a high rate of absentee landlords, poverty, little economic development, and an inability to sustain growth within the area while surrounding areas, including downtown Las Vegas, have tremendous growth, revitalization, and multibillion-dollar projects. The workshop provides an opportunity for participants to brainstorm with community stakeholders to create policies and strategies related to redevelopment and revitalization while preserving the history of the community. Topics include growth, land use, housing, culture and historic preservation, and community services. | **\$25**

INTEGRATE

*The Transportation/
Land Use Connection*

Tools to bring transportation and land use together

Available at
APA's Planningbooks.com



Economic Development for Planning Practitioners (S001)

Sunday, 9:00 a.m.–5:00 p.m.

Acquire new strategies for economic development in this session, which focuses on understanding the economy and the tools and strategies of economic development. Gain an understanding of the competitive position of your local economy as well as elements such as workforce development, recruitment, and retention. Learn how to answer common questions and leverage public-private partnerships. *Sponsor: American Institute of Certified Planners and Economic Development Division.* **CM | 7**

Integrating Health and Planning (S002)

Sunday, 9:00 a.m.–5:00 p.m.

Engage in facilitated discussions, small group work, and problem-solving sessions to learn how to better integrate public health issues into the land-use and transportation planning process. Participants will practice analyzing the built environment, the planning process, and land-use and community design policies from the point of view of health professionals. *Sponsor: Centers for Disease Control and Prevention.* **CM | 7**

Integrating Transportation and Land-Use Planning (S003)

Sunday, 9:00 a.m.–5:00 p.m.

Consider how land use and transportation inevitably interrelate. Learn the physics and economics of urban transportation systems and what causes congestion, and discover which policies are most useful in addressing the effects of transportation on land use and vice versa. Explore strategies for gaining political traction to influence solutions to land-use and transportation problems. *Sponsor: American Institute of Certified Planners.* **CM | 9**

Negotiation Skills for Planners (S004)

Sunday, 9:00 a.m.–4:00 p.m.

Master the critical skills of negotiation. Through exercises, presentations, and discussions, discover your personal "default" negotiation strategies. Consider alternative strategies and approaches. Develop crucial analytical, strategic, and practical implementation skills. Learn to assess strategic choices and avoid common conceptual traps, and discover techniques for implementing a collaborative problem-solving approach and negotiating power. *Sponsor: American Institute of Certified Planners.* **CM | 9**

Building and Leading Groups (S005)

Sunday, 9:00 a.m.–noon

How well urban planners work together can mean the difference between an outstanding plan created on schedule or a mediocre plan submitted late and over budget. This workshop helps planners learn successful strategies using Bruce Tuckman's "Models for Group Development." Training includes open discussion, exercises, and active listening techniques designed to improve group dynamics. **CM | 3**

Effective Local Government Conservation Programs (S006)

Sunday, 9:00 a.m.–noon

Explore the key policies and procedures necessary to create an efficient program including formulating and evaluating public acquisition efforts based on conservation plans. Examine the role of partners such as land trusts in creating and operating successful programs and learn what determines a good public acquisition/conservation program. Hear about essential best practices from the Trust for Public Land. *Sponsor: American Institute of Certified Planners.* **CM | 3**

Historic Preservation (S007)

Sunday, 9:00 a.m.–noon

Explore the leading edge of historic preservation planning. Examine how communities assess and conserve post-war "recent past" properties. What is preservation's role in green building and sustainability? How can communities increase densities in established city neighborhoods? Learn how cities are addressing these issues and outline a Preservation Action Plan for your community. *Sponsor: American Institute of Certified Planners.* **CM | 3**

Legal Foundation of the Planning Commission (S008)

Sunday, 9:00 a.m.–noon

The first part of this workshop is for officials and the last part is for trainers. Both audiences are invited to attend the complete workshop. Learn the basics of planning law. Find out how enabling legislation varies from state to state. Explore the legal decision-making authority of the commission and find out what legal challenges are most common in planning. Presenters explain how the commission should work with staff and legal council. Finally, examine the fundamentals of open meetings law and ethics. The last hour of the workshop is devoted to a discussion of how planning law is taught at the state and local level. **CM | 1.5**

Management Skills for Planners (S009)

Sunday, 9:00 a.m.–noon

Effective planners master management. Here is your chance to start developing this skill set. Learn how to supervise and motivate staff and increase productivity. Find out how to develop programs, create effective work plans, and take the next step in time management. Gain insights into your local political dynamics and how to develop strategies. *Sponsor: American Institute of Certified Planners.* **CM | 3**

Planning for a Disaster-Resistant Community (S010)

Sunday, 9:00 a.m.–noon

Hurricanes Katrina and Rita demonstrated the devastation natural hazards have on local economies, development, land use, infrastructure, populations, and cultural resources. In this interactive training workshop learn how to use risk assessment in hazard mitigation planning, mainstream mitigation into planning and development, bring stakeholders into the process, and encourage leaders to take timely, effective action. *Sponsor: American Institute of Certified Planners.* **CM | 5**

Site Planning (S011)

Sunday, 9:00 a.m.–noon

The secrets to site design revealed in three hours! Conquer your fear of drawing and join in a real-world experience in physical planning and design. Learn core principles using the physical design tool kit including base maps, graphical notation, design sketches, and presentation to professional peers. Gain a greater sense of design and how to influence plans through three-dimensional thinking. No design experience necessary. *Sponsors: American Institute of Certified Planners and Urban Design and Preservation Division.*

Speak the Language of Success (S012)

Sunday, 9:00 a.m.–noon

This fast-moving, participatory seminar allows participants to acquire strategic communication techniques that will equip them to effectively deal with city councils, internal staff, and the public. Subjects include how to organize listening sessions, build relationships, and motivate and persuade others. *Sponsor: American Institute of Certified Planners.* **CM | 3**

Turning Traffic Upside Down (S013)

Sunday, 9:00 a.m.–noon

Tempers flare when traffic issues come up in community meetings. Conversations often stall on the topics of intersection congestion and traffic lights, and exclude meaningful discussion of real planning issues. In this workshop, planning and engineering practitioners help participants turn traffic upside down by crafting effective strategies for communicating transportation information in the context of overall planning concerns. *Sponsor: American Institute of Certified Planners.* **CM | 3**

Winning Political and Community Support for Your Project (S014)

Sunday, 9:00 a.m.–noon

Great plans and projects often collapse in the face of NIMBY opposition and the reluctance of officials to make controversial decisions. Gain practical how-to tools to put together your own outreach and lobbying plans. Participants learn to assess politicians' decision-making styles and communication preferences, to avoid or manage hostile audiences, to minimize community resistance, and to turn pro-project attitudes into pro-project action. *Sponsor: American Institute of Certified Planners.* **CM | 3**

Community Planning in Semiarid Regions (S015)

Sunday, 9:00 a.m.–noon

Water supplies are a critical issue for growing communities in the semiarid southwest desert. How can communities such as Clark County and the City of Las Vegas balance the demands of growth with the constraints of limited water supplies? Using southern Nevada as a case study, hear about current and projected water issues and learn to prepare a water budget—a useful tool in any community. *Sponsor: American Institute of Certified Planners.* **CM | 3**

How Large is Your Carbon Footprint? (S022)

Sunday, 9:00 a.m.–noon.

Energy and climate change are critical issues facing today's communities. Communities that want to reduce energy dependence and greenhouse gas emissions need to understand and manage energy consumption and environmental impact. Discover how to locate, collect, and analyze data to calculate your community's carbon footprint and to plan for greater sustainability. *Sponsor: American Institute of Certified Planners.* **CM | 3**

Charrettes for Planning (S016)

Sunday, 1:00–5:00 p.m.

The Dynamic Planning framework is an accelerated collaborative planning process using charrettes. Learn how to set up a charrette studio and how to incorporate tools, techniques, measures, schedules, and public meeting planning and development standards into projects. *Sponsor: American Institute of Certified Planners.* **CM | 4**

Fiscal Impact Assessment (S017)

Sunday, 1:00–5:00 p.m.

Engage in hands-on activities and discussion based on real-world examples to learn the techniques of fiscal impact studies and how growth and land-use decisions affect a community's fiscal condition. Topics cover trends land-use decisions, understanding revenue structure and service provision, infrastructure financing, and how to review a fiscal impact study. **CM | 4**

Neighborhood Analysis, Visioning, and Planning for Action (S018)

Sunday, 1:00–5:00 p.m.

Effective neighborhood revitalization plans require clear goals and measurable objectives. Learn to prepare a neighborhood analysis strategy and explore participation techniques. Gain insight into organizing and participating in visioning exercises. Walk away understanding the language of neighborhood revitalization and the skills to implement the plan. *Sponsors: American Institute of Certified Planners and Housing and Community Development Division.* **CM | 4**

Project Management for Planners (S019)

Sunday, 1:00–5:00 p.m.

Learn the five-phased process for managing projects: initiating, planning, executing, controlling, and closing. Through dialogue, participation, and application in the real world, you will learn about project scope statements, stakeholders, work breakdown structure, cost estimating, communications, and risk. Learn the lessons of successful project managers and how to manage team transitions. *Sponsor: American Institute of Certified Planners.* **CM | 4**

Effective Site Plan Review (S020)

Sunday, 1:00–5:00 p.m.

Learn site plan review from the perspectives of the reviewer and plan preparer. Because site plan reviews vary locally, presenters address general similarities and differences, from the initial steps of completeness determination through technical review. Learn how to conduct preapplication meetings, develop and use checklists, and write review memos. Gain insight into the relationship of the review to the context of the community and how it supports larger goals. Includes an exercise with actual site plans. *Sponsor: American Institute of Certified Planners.* **CM | 4**

AICP Examination Preparation (S400)

Sunday, 1:00–5:00 p.m.

Prepare for the AICP exam with the help of chapter professional development officers who offer tips and focused training in exam format, content, and topic areas. Presenters will provide an overview of AICP certification, exam eligibility, recent exam analysis statistics, and the Certification Maintenance Program, covering what you need to successfully complete this computer-based exam. *Sponsors: American Institute of Certified Planners.*

Effective Presentations (S021)

Sunday, 1:00–4:00 p.m.

Learn creative concepts to make the audience remember your message and you. In a fast-moving, participatory seminar, learn to deliver difficult messages to indifferent audiences, and use successful techniques to create taut, attention-keeping content, using intelligent visual aids, understanding and controlling body language, giving controlled answers, and influencing others. *Sponsor: American Institute of Certified Planners.* **CM | 3**

Instruction Manual for Advanced Regulatory Drafting (S023)

Sunday, 1:00–4:00 p.m.

Experience the process of drafting, editing, and sharing regulations to reflect complex problem solving and innovative regulatory techniques. Learn best practices, code basics, and how to draft legally defensible regulations. Examine design-based regulation, fees and funding, and how to make a regulatory document function. Discover how to test compliance after code adoption. *Sponsor: American Institute of Certified Planners.* **CM | 3**

Managing Floodplain Development (S024)

Sunday, 1:00–4:00 p.m.

Increase your understanding of managing floodplains and enforcing NFIP flood damage prevention ordinances in this workshop designed for planners who don't work with these issues on a daily basis. Learn about flood protection in arid western states and how to address problems through local floodplain management policies. *Sponsor: American Institute of Certified Planners.* **CM | 3**

New Urbanism and the Comprehensive Plan (S025)

Sunday, 1:00–4:00 p.m.

Learn about the principles in the Charter for the New Urbanism. Explore the multiple challenges associated with maps, text, and community processes as planners try to create a new urbanist comprehensive plan. Work on a small-group exercise addressing one aspect of the comprehensive planning challenge. *Sponsor: American Institute of Certified Planners.* **CM | 3**

Variances, Special Uses, and Board of Adjustment Operations (S026)

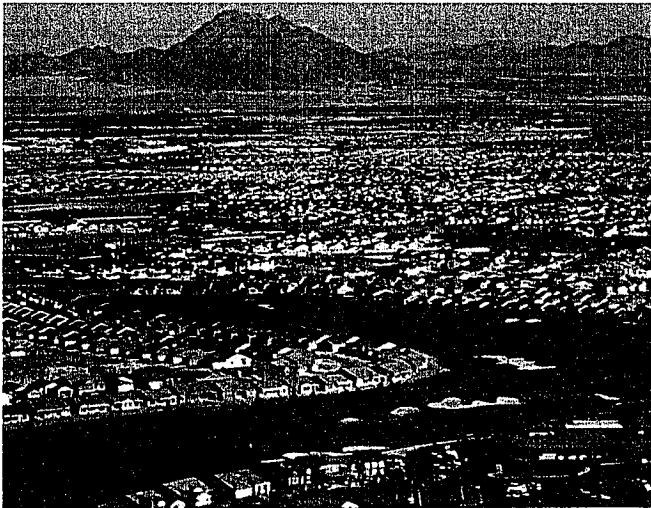
Sunday, 1:00–4:00 p.m.

This special workshop for planning commissioners and public officials covers substantive and procedural planning issues. Using role-playing you develop an understanding of variances, special and conditional uses, board of adjustment operations, and decision making. There will be plenty of time for questions and answers.

Conference Speaker Support (S402)

Sunday, 3:45–4:30 p.m.

All speakers and moderators are invited to learn how to load your presentation and manage the audiovisual equipment, microphones, and lights in the session rooms. Find out where to go to get help, how to use the speaker preview room, and gain tips for conducting a polished, professional presentation.



"A USEFUL, HANDS-ON APPROACH
GREAT INSTRUCTORS!"

—Past conference attendee

GIS WORKSHOPS

Preparing and Delivering Geo-Enabled Content for Citizen Participation (W200)

Sunday, 8:30 a.m.—noon

Using GIS and Limehouse Software, planners, managers, and analysts can now easily produce and share active textual and geospatial information with collaborators, citizens, and stakeholders via the web. In this workshop, you will learn how to create documents with geographic visualizations of policy extents and gather feedback, create surveys, associate geographic locations, and process results by geographic location.

CM | 3.5 | \$25

Zoning Case Management Using GIS (W201)

Sunday, 1:30–5:00 p.m.

Explore how GIS is used for managing zoning applications in a typical planning office. Using a zoning case management system, this session will cover the entire case cycle, from identifying parcels to automated merging of data to generating notification documents. Become familiar with GIS decision-support tools to justify and defend zoning decisions.

Prerequisite: Basic Windows skills. **CM | 3.5 | \$25**

Introduction to GIS for Planners (W202/W204)

Monday, 8:30 a.m.—noon

Tuesday, 8:30 a.m.—noon

What is GIS and how can it facilitate the planning process? Explore GIS concepts by working through a series of planning-specific exercises using ArcGIS. The focus is on understanding GIS concepts and technology in planning. Suitable for planning directors, senior managers, and those interested in geospatial technologies. Prerequisite: Basic Windows skills. **| \$25**

Planning Analysis Using GIS (W203/W205)

Monday, 1:30–5:00 p.m.

Tuesday, 1:30–5:00 p.m.

Explore how planners can use GIS tools to carry out familiar planning tasks using ArcGIS. Learn to perform pertinent spatial analyses to make better, more consistent decisions in the planning process. Become familiar with the latest 2D and 3D GIS technologies. Suitable for planners who work with GIS, supervise GIS staff, or implement GIS technologies. Prerequisites: Introduction to GIS for Planners or basic ArcView skills.

CM | 3.5 | \$25

How to Set Up a GIS Program (W206)

Wednesday, 2:30–4:30 p.m.

The goal of this forum is to provide planners with ideas and techniques for the development and management of successful GIS programs in their organizations. Designed to generate creative thinking among attendees about how they apply GIS within their own organizations, it offers valuable information about GIS planning, management, and implementation. Speakers will discuss their experiences in implementing GIS at planning agencies. Note: This is not a hands-on workshop. It is free, but registration is required. **CM | 2**

NEW THIS YEAR: TALK TO PRESENTERS AND TRY OUT THE SOFTWARE IN A 25-MINUTE Q & A FOLLOWING EACH TECHNOLOGY SHOWCASE PRESENTATION.

TECHNOLOGY SHOWCASE



GIS Visualization for Sustainable Redevelopment Plans (S200)

Monday, 10:30–11:30 a.m.

Learn how to display sustainable built environment alternatives including green buildings and plazas, bike paths, and stormwater management features. Explore how to create photo-realistic three dimensional scenes in a GIS environment using ArcGIS, SketchUp, and CommunityViz and use them to analyze and compare alternative sustainable design scenarios. **CM | 1**

Prioritize Transportation Projects with GIS (S201)

Monday, 1:00–2:00 p.m.

In response to financial constraints and a desire for efficiency, one agency uses GIS to prioritize transportation projects and pedestrian improvements. Criteria include safety, impacts on constrained communities, freight movement, congestion, transit usage, and walking distance to key destinations. Explore the essential and dynamic role GIS analysis plays in transportation planning. **CM | 1**

Developing a Geocentric Planning Information System (S205)

Monday, 2:30–3:30 p.m.

This session will explore the idea of developing a "Planning Information System" founded on a geographic approach. A centralized, departmental GIS can house many applications such as community awareness, analysis and modeling, information management, and organizational awareness designed to improve and streamline planning processes. **CM | 1**

Greenprinting GIS for Setting Local Planning Priorities (S206)

Monday, 4:00–5:00 p.m.

Communities across the country are coming together to address water quality, park and open space priorities, and land conservation as part of their overall local and regional planning efforts. Greenprinting is a unique modeling process and framework developed by the Trust for Public Land and validated in over 40 communities. **CM | 1**

Develop a Regional Green Infrastructure Network (S202)

Tuesday, 9:30–10:30 a.m.

GIS-based analysis can produce a green infrastructure network that highlights the existing natural resource base and opportunities to enhance network connectivity. Explore the analytic process and discover ways to integrate stakeholder input in the modeling effort. **CM | 1**

Electronic Plan Reviews (S203)

Tuesday, 11:00 a.m.–noon

The Maricopa County (Arizona) Planning and Development Department uses an electronic review process for building plans, rezoning applications, subdivision plats, and comprehensive plan amendments. Learn to improve document tracking, facilitate exchanges of redlined and edited text documents and maps, and improve record keeping and data retrieval. **CM | 1**

Software Every Planner Needs (S207)

Tuesday, 1:30–2:30 p.m.

With an increasing focus today on visualization, conducting analysis processes critical to a planning department can sometimes be overlooked. Explore GIS software packages and methods that every planning department should own. **CM | 1**

Building an Enterprise Carbon Footprint Management Information System (S208)

Tuesday, 3:00–4:00 p.m.

GIS is used in Carbon Footprint Management for site suitability analysis and visualization. The capacity of GIS as a collaborative 4D enterprise organization, storage, and analysis tool is underutilized. Learn to develop a data model, discuss enterprise scalability, explore integrating existing tools, and use Model Builder applications to develop a carbon management information system. **CM | 1**

Digital Urban Design Decision Making (S204)

Wednesday, 10:30–11:30 a.m.

One university created a digital 3D model as a decision support tool that enables city staff, commissions, and the public to visualize development proposals, including the contentious topic of building height. Explore the potential of 3D tools and digital analysis and find out what data is required. **CM | 1**

Map Courtesy of City of Las Vegas



KICK OFF THE CONFERENCE WITH A TOUR OF THE CITY. GO BEYOND THE STRIP TO SEE THE REAL LAS VEGAS: HISTORIC SITES, GROWING NEIGHBORHOODS, AND MORE.

ORIENTATION TOURS

MONDAY, APRIL 28

01 Park Planning in Las Vegas (W001)

Monday, 9:00 a.m.–5:00 p.m.

With 5,000 new residents monthly, the City of Las Vegas must provide recreational space to accommodate new and existing residents. See how the city uses the Southern Nevada Public Lands Management Act to provide new and improved parks in both newly developed and mature neighborhoods. Transportation: Motorcoach, walking. Includes lunch.

CM | 6 | \$97 ✈

02 Valley of Fire State Park (W002)

Monday, 9:00 a.m.–5:00 p.m.

Visit the red sandstone formations that inspired the creation of Nevada's first and largest state park in 1935. Examine the importance of large-scale regional preservation and recreation planning on a site that contains 3,000-year-old Indian petroglyphs. The park also is a popular setting for commercials and films, including *Star Trek Generations*. Transportation: Motorcoach, walking. Includes lunch. **CM | 3.5 | \$83**

03 Cutting-Edge Technology, Tools, and Techniques (W003)

Monday, 11:00 a.m.–5:00 p.m.

New technology and tools assist planners in identifying, analyzing, and demonstrating the implications of planning decisions. Local planning departments will show how they use these tools and techniques to enhance policy, plan, and project evaluation, and to illustrate what the impacts of the proposal should or could be. Transportation: Public, walking. Includes lunch. **CM | 4 | \$55**

04 Changing Community Image with Destination Resorts (W004)

Monday, 11:00 a.m.–3:30 p.m.

Solstice Resort, a multimillion-dollar casino resort and mixed use development, is under construction in the City of Mesquite. Hear about challenges the city faced in integrating resort, hotel, and casino elements with traditional retail tenants, applying new urbanism concepts to a casino, and gaining regulatory approvals to incorporate a gaming property into a commercial master plan. Transportation: Motorcoach, walking. **CM | 3.5 | \$57**

Las Vegas: Beyond the Glitz

Visitors to Las Vegas rarely see beyond the casinos and neon lights of the Strip. Discover the other side of what this entertainment mecca has to offer by visiting its residential neighborhoods, commercial districts, and natural areas. View historic sites such as the Las Vegas Springs Preserve and the Mormon Fort and see the original downtown Las Vegas town site that was platted in 1905 along the tracks of the Union Pacific Railroad. Visit the suburban communities of Henderson and North Las Vegas, and witness the evolution of master planned communities such as Summerlin and Green Valley Ranch that have accounted for much of the growth in the Las Vegas Valley. **CM | 2 | \$49**

Sunday, 9:00 a.m.–noon. (P300)

Sunday, 1:30–4:30 p.m. (P301)

Monday, 9:00 a.m.–noon. (P302)

Monday, 1:30–4:30 p.m. (P303)



05 Creating a Regional Park at Craig Ranch (W005)

Monday, 11:00 a.m.–2:00 p.m.
 Tour this historic 132-acre golf course and hear how fairways and water features will be redesigned for recreation, including walking paths, picnic areas, an amphitheater, aquatic center, and dog park. Learn how citizen involvement in the planning process helped preserve more than 70 percent of the existing mature trees. Transportation: Motorcoach, walking. **CM | 2 | \$49**

06 Desert Conservation in Urbanizing Areas (W006)

Monday, 11:00 a.m.–2:00 p.m.
 Urbanization in the Las Vegas Valley has consumed thousands of acres of desert. Remnants of the natural landscape have been preserved as open space, a reminder of the environment that “used to be.” A conservation transfer agreement between local and federal agencies and developers may signal a new era in desert conservation. Transportation: Motorcoach, walking. **CM | 2 | \$53**

07 Mixed Use in Suburbia (W007)

Monday, 11:00 a.m.–1:30 p.m.
 Explore the District at Green Valley Ranch, one of the most innovative and successful mixed use projects in Nevada. The planners and developers of the project will share their insights into what transpired to create this award winning community. Transportation: Motorcoach, walking. **CM | 2 | \$44**

08 Lewis Street Corridor (W008)

Monday, 11:00 a.m.–2:00 p.m.
 Visit an award-winning, three-block pedestrian corridor that features an active civic plaza, poet’s bridge, and several pieces of public art. The \$2.98 million corridor, opened in May 2005, links the new Federal Court House with the new Regional Justice Center and Detention Center in downtown Las Vegas. Transportation: Motorcoach, walking. **CM | 1.5 | \$45**

09 Cultural Corridor Tour (W009)

Monday, 11:30 a.m.–4:30 p.m.
 Visit the Cultural Corridor, home to one of the most important urban clusters of cultural and educational facilities in the Las Vegas Valley. With four museums, a library, a cultural center, and a convention facility, this Las Vegas Boulevard neighborhood emerged over a decade ago as an important downtown cultural district. Transportation: Motorcoach, walking. **CM | 3 | \$62**

10 Diversity in the Desert (W010)

Monday, 11:30 a.m.–3:30 p.m.
 Explore the historic African American Westside neighborhood and its pioneering beginnings, civil rights struggles, economic decline, and revitalization. Learn about the social, cultural, economic, and religious influences and contributions of African Americans in Las Vegas. Visit historic landmarks, Walker African-American Museum, West Las Vegas Arts Center, commercial districts, new developments, and community institutions. Transportation: Motorcoach, walking. Includes lunch. **CM | 3 | \$66**

11 Paiute Nation’s Snow Mountain Resort (W011)

Monday, 11:30 a.m.–3:30 p.m.
 The Paiute Nation has developed a burgeoning golf resort in the northwest Las Vegas area. On-site guides will present the history, successes, and challenges associated with this development. The Snow Mountain Resort is located on the edge of an explosive growth area near Las Vegas. Transportation: Motorcoach, walking. **CM | 2.5 | \$63**

12 The Green Building Tour (W012)

Monday, 11:30 a.m.–3:30 p.m.
 Green building has invaded Las Vegas with projects of various designs. Visit an animal shelter, corporate center, and net-zero home, each meeting LEED Building Certifications. Tour the CityCenter project on the Strip, which also hopes to attain LEED certification. Transportation: Motorcoach, walking. **CM | 3 | \$65**

13 Lorenzi Park’s Past and Future (W013)

Monday, noon–3:00 p.m.
 Tour this 60-acre park in the central Las Vegas Valley, originally purchased for farming in 1911. Following the discovery of a productive well and two fishing lakes, a pool and resort buildings opened to the public in 1926. Learn about a planned \$26 million refurbishment through the Southern Nevada Public Lands Management Act. Transportation: Motorcoach, walking. **CM | 2 | \$45**

14 Solo and Big-Firm Planning Practitioners (W014)

Monday, noon–3:00 p.m.
 Think we don’t do planning in Vegas? Think again! Join us on a tour of small, medium, and large firms—PBS&J, RAFI, and LAS Consulting—offering planning services. See the exciting things they’re doing. Transportation: Motorcoach, walking. *Sponsor: Private Practice Division.* **| \$40**

15 Urban Design for a Fantasy Environment (W015)

Monday, noon–3:00 p.m.
 The Las Vegas strip is renowned for its glitz. Underlying the diversity of its ersatz environments—everything from medieval castles to Egyptian pyramids—urban design principles are invisibly at work. Learn how these principles contribute to the Strip’s success as a tourist destination and the ultimate example of “placemaking.” Transportation: Public, walking. **CM | 3 | \$41**

16 Innovative Transit Applications (W016)

Monday, noon–2:00 p.m.
 Hop aboard the “Deuce on the Strip” outside the conference hotel and view the glitz and glamour from the second floor of this double-decker bus. The Deuce will stop at the Downtown Transit Center, where participants will board the Ace, the longest Bus Rapid Transit system in the nation. Transportation: Public, walking. **CM | 1 | \$35**

17 Wireless Las Vegas (W017)

Monday, 12:30–4:30 p.m.

Visit wireless infrastructure facilities as industry professionals provide information and context for public planners to help them become more familiar with wireless communications land use, operation, impacts, and public benefits. From towers to stealth, in-building and DAS, you'll visit a wide range of wireless facilities (hard hats required). Transportation: Motorcoach, walking.

CM | 3.5 | \$61

18 Dozens of Acres for Development in Downtown (W018)

Monday, 1:00–5:00 p.m.

Visit the recently obtained 110-acre Union Pacific Railroad site that is being redeveloped with sustainability in mind. Learn why developers chose downtown Las Vegas as the site for two world center markets and the effects they will have on the southern Nevada economy. Transportation: Motorcoach, walking. **CM | 2.5 | \$54**

19 Gay and Lesbian Community Organizations (W019)

Monday, 1:00–5:00 p.m.

Hear from two local organizations serving the GLBT communities. Visit the Gay & Lesbian Community Center of Southern Nevada and learn about programs dedicated to health and wellness. Then find out how Golden Rainbow and local entertainers developed an affordable housing project for people living with HIV/AIDS. Transportation: Motorcoach, walking. **CM | 3 | \$53**

20 Historic U.S. Courthouse and Post Office (W020)

Monday, 1:00–3:00 p.m.

Discover the history of the Las Vegas downtown post office and courthouse, its significance as a civic landmark, and the plans for future use as a museum and gallery. Learn how the city is working to preserve it as a part of the extensive rehabilitation construction process. Transportation: Motorcoach, walking. **CM | 1.5 | \$45**

TUESDAY, APRIL 29

21 River Mountain Loop Trail (W021)

Tuesday, 7:30 a.m.–12:30 p.m.

Ride the River Mountain Loop Trail, a 35-mile path integrated into the urban fabric that encourages activity for neighborhood residents and expands the use of low-maintenance native plantings. See panoramic views of Lake Mead and the Las Vegas Valley. Transportation: Motorcoach, walking, bicycle. **CM | 3 | \$95**

22 Sloan Canyon National Conservation Area Hiking Tour (W022)

Tuesday, 7:30 a.m.–12:30 p.m.

Experience the magnificent Sloan Canyon NCA during this physically intense, one-mile hiking and rock-scaling tour. The 48,000-acre area, which includes washes, wildlife, and cultural resources, will change perceptions about the Las Vegas Valley. Learn about public lands management, growth issues, resource protection and management, and the "desert edge." Transportation: Motorcoach, intensive hiking. Includes lunch. **CM | 3 | \$90**

23 Pahrump Valley Tour (W023)

Tuesday, 8:00 a.m.–4:00 p.m.

Travel over the scenic 6,000-foot-high Spring Mountains to Pahrump and learn about its transition from country town to bedroom community. About 18,000 housing units have been approved here; its options for the future include remaining a bedroom community or becoming a balanced community whose natural amenities provide a unique identity. Transportation: Motorcoach, walking. Includes lunch. **CM | 4 | \$81**

24 Valleywide Historic Driving Tour (W024)

Tuesday, 8:00 a.m.–4:00 p.m.

Gain an understanding of the events—including World War II and construction of the Hoover Dam—that created growth and shaped the Las Vegas Valley. Tour several downtown historic sites then visit West Las Vegas, Tule Springs Ranch, Kiel Ranch, Boulder City, and Henderson. Transportation: Motorcoach, walking. Includes lunch. **CM | 4 | \$85**

25 Red Rock Canyon (W025)

Tuesday, 8:00 a.m.–2:00 p.m.

Red Rock Canyon, a national recreation area, is one of the most picturesque spots in Southern Nevada. A true oasis in the desert, Red Rock offers visitors a respite from the bright lights and big city of Las Vegas. Transportation: Motorcoach, walking, bicycle. Includes lunch. **CM | 4 | \$95**

26 Creating a New Town in the Desert (W026)

Tuesday, 8:15 a.m.–2:15 p.m.

Observe the birth of Coyote Springs, a new town 55 miles north of Las Vegas. Spanning Clark and Lincoln counties, this 67 square-mile master planned development will serve as a bedroom community with 159,000 dwelling units at build out. Transportation: Motorcoach, walking. Includes lunch. **CM | 3 | \$75**

27 Yucca Mountain (W027)

Tuesday, 8:15 a.m.–2:15 p.m.

The federal government has sought a geologic resting place for 70,000 metric tons of high-level radioactive waste and spent nuclear fuel for over 20 years. Visit Yucca Mountain in Nye County, Nevada, designated by the U.S. Congress in 2002 to be the nation's first such repository. Transportation: Motorcoach, walking. Includes lunch. **CM | 4 | \$40**

28 A Homeless Plan that Works (W028)

Tuesday, 8:30 a.m.–12:30 p.m.

Learn how Las Vegas is addressing homelessness through its comprehensive Homeless City 10-Year Plan. Observe the seamless client services developed through coordination among local businesses, nonprofit organizations, and government agencies, and review the planning document. Tour facilities dedicated to ex-offenders, veterans, males, females, youth, and families. Transportation: Motorcoach, walking. **CM | 3.5 | \$56**

29 Community Development Block Grant Project Tour (W029)

Tuesday, 8:30 a.m.–12:30 p.m.

Explore Las Vegas's innovative CDBG projects that have revitalized and invigorated the city's mature urban core. Visit the one-stop senior services shop housed in a former church that has been restored with historic sensitivity. Tour community and child care centers as well as a flagship 45,000 square-foot community senior center. Transportation: Motorcoach, walking. Includes lunch. **CM | 3.5 | \$68**

30 Tule Springs Tour (W030)

Tuesday, 8:30 a.m.–12:30 p.m.

Experience a true desert oasis! Once a watering hole for dinosaurs and nomadic tribes, Tule Springs remains in high demand as the largest park in the valley. Listen to a presentation about the planning process for this 2,300-acre refuge that includes historic buildings and natural springs. Transportation: Motorcoach, walking. **CM | 2 | \$58**

31 Henderson's Customer Focus (W031)

Tuesday, 8:30 a.m.–noon

Discover how the City of Henderson Development Services Center shifted the paradigm of expected service from government red tape to welcoming and customer focused. Learn about the successes and failures in implementation and how this transparent program includes guaranteed service targets as you tour the center and City Hall. Transportation: Motorcoach, walking. **CM | 2.5 | \$45**

32 Innovative Pedestrian Protection Measures (W032)

Tuesday, 9:00 a.m.–noon

Visit the sites considered most effective in preventing pedestrian accidents based on the 2007 final report of the Regional Transportation Commission of Southern Nevada and its partners. Take home a CD of the report to track the progress of the FHWA's review and recommendations. Transportation: Motorcoach, walking. **CM | 2.5 | \$48**

33 Student Workshop: Journey from Student to Planning Professional (W033)

Tuesday, 9:00 a.m.–noon

Hear the straight scoop from experts in Clark County and the City of Las Vegas about challenges, successes, and lessons learned as they discuss projects large and small. Leave your preconceived notions about education and experience requirements at the door, and mingle with planners doing what you dream of. Transportation: Motorcoach, walking. **| \$25**

34 Intelligent Transportation Systems in Planning (W034)

Tuesday, 9:00–11:00 a.m.

Visit Southern Nevada's Freeway and Arterial System of Transportation (FAST) building, one of the first truly integrated Intelligent Transportation System organizations in the country. FAST uses all available tools to improve the public's commute throughout Southern Nevada. The FAST building features a 40-monitor video wall, 4,000-square-foot control center, and media room. Transportation: Motorcoach, walking. **CM | 1 | \$41**

35 Project GREEN Habitat Restoration Walking Tour (W035)

Tuesday, 9:00–11:00 a.m.

Take a guided walking tour of the City of Henderson's Project GREEN along the Pittman Wash, which carries floodwater from the mountains to Lake Mead, the valley's principal source of drinking water. Discover why and how Project GREEN was designed to protect and restore this 2.5-mile area of natural habitat. Transportation: Motorcoach, walking. **CM | 1.5 | \$35**

36 Henderson SNPLMA Projects (W036)

Tuesday, 9:30 a.m.–3:30 p.m.

Discover how the City of Henderson, relying on the Southern Nevada Public Land Management Act (SNPLMA), has used \$200 million in grants to acquire land for and improve some 30 parks and trails. See how the city is providing recreational opportunities for a growing community with changing demographics. Transportation: Motorcoach, walking. Includes lunch. **CM | 3 | \$78**

37 Las Vegas Strip by Day (W037)

Tuesday, 9:30 a.m.–2:30 p.m.

Successful implementation of projects on the Las Vegas Strip requires careful planning and extensive coordination. Learn how design, planning, and implementation is balanced with impact mitigation and key strip corridor projects as prime examples of the county's planning process at work. Transportation: Motorcoach, walking. Includes lunch. **CM | 4.5 | \$60**

38 Redevelopment Works! (W038)

Tuesday, 9:30 a.m.–1:30 p.m.

Learn how successful redevelopment efforts in both Boulder City's and Henderson's downtowns came together through significant investments, facilitation and planning, and collaboration with the private sector. Explore best practices of how to facilitate and sustain momentum that invokes change and see how public-private partnerships offer significant impetus to redevelopment efforts. Transportation: Motorcoach, walking. **CM | 3.5 | \$57**

39 Density Meets Design (W039)

Tuesday, 9:30 a.m.–12:30 p.m.

Hear the challenges and rewards of developing Inspirada, a new urbanist community of 13,500 housing units on 2,000 acres under construction in the Las Vegas Valley. Planning principles include enhanced architectural character, pedestrian-friendly neighborhoods, and tree-lined boulevards; open spaces, schools, parks, and trails; and a 300-acre mixed use town center. Transportation: Motorcoach, walking. **CM | 2.5 | \$49**

40 Las Vegas Springs Preserve (W040)

Tuesday, 10:00 a.m.–1:30 p.m.

Explore 5,000 years of history at Springs Preserve, a 180-acre cultural and historical attraction. The preserve features museums, sustainability galleries, desert botanical gardens, theaters, and walking trails. Gain an understanding of the sustainable technologies that make Springs Preserve the largest Platinum LEED-rated commercial building in the Southwest. Transportation: Motorcoach, walking. Includes lunch. **CM | 2 | \$71**

41 Mock Las Vegas Planning Commission Meeting (W041)

Tuesday, 11:15 a.m.–2:15 p.m.

Visit the Las Vegas City Council chambers and observe a staged planning commission hearing. An interactive dialogue will take place with participants, the city attorney, and active planning commission members. Learn how large numbers of applications are processed in a fast-paced environment. This workshop is of particular interest to planning commissioners and officials. Transportation: Motorcoach, walking. Includes lunch. | **\$65**

42 Affordable Housing Options in Las Vegas (W042)

Tuesday, 1:00–5:00 p.m.

A shrinking supply of land and high development costs in Las Vegas makes providing affordable housing essential to the valley's economic vitality a challenge. Examine how the city has responded by supporting higher density rental housing in urban and suburban settings. Transportation: Motorcoach, walking. **CM | 3 | \$58**

43 Clark County Wetlands Park Tour (W043)

Tuesday, 1:00–5:00 p.m.

Explore the 130-acre nature preserve in this seven-mile strip of desert wetlands and see how conservation, flood control, and recreation needs are met. The nature preserve is a prime example of wetlands ecology, nature's unmatched water filtering and cleansing system. Learn how urban runoff interacts with plant and animal life. Transportation: Motorcoach, walking. **CM | 2.5 | \$70**

44 Las Vegas Boulevard/Strip Scenic Byway Tour (W044)

Tuesday, 2:30–6:30 p.m.

Visit the country's only two nighttime scenic byways. Explore the development history of this world-renowned entertainment road and the role neon signs played in making it one of the most famous lengths of road ever. Transportation: Motorcoach, walking. Includes dinner. **CM | 2 | \$57**

WEDNESDAY, APRIL 30

45 Amargosa Trail Urban Pathway (W045)

Wednesday, 8:00 a.m.–noon

Stroll the Amargosa Trail along the Amargosa Power Easement, which provides an urban trail corridor diagonally through the City of Henderson. This multiuse trail is landscaped with drought-tolerant plant material and can be accessed through trailheads, parks, and neighborhood access points. Transportation: Motorcoach, walking. **CM | 2 | \$54**

46 Las Vegas Paiute Indian Colony (W046)

Wednesday, 8:00 a.m.–noon

Discover how the Paiutes have maintained the tribe's cultural identity and heritage in the face of contentious issues such as water rights and the impacts of the Native American Graves Protection & Repatriation Act. What started as a small tribe on a marginal land base has become an independent economic entity. Transportation: Motorcoach, walking. **CM | 2.5 | \$69**

47 Las Vegas Wash Trail Enhancement Project (W047)

Wednesday, 8:00 a.m.–noon

Developing the Las Vegas Wash requires an interjurisdictional effort. The goal is to create a 20-mile recreational trails system that preserves and protects the Wash's natural environment. Visit sections of the Wash within the city limits and learn about the stages of interjurisdictional cooperation. Transportation: Motorcoach, walking. **CM | 3 | \$52**

48 Downtown Historic Driving Tour (W048)

Wednesday, 8:30–11:30 a.m.

Tour downtown historic sites and learn about the development of the city from initial grid to first-string suburbs. Visit historic sites and neighborhoods that best represent the events that created growth and shaped the city, including World War II and the construction of Hoover Dam. Transportation: Motorcoach, walking. **CM | 3 | \$49**

49 Flood Control Facilities as Open Space (W049)

Wednesday, 8:30–11:30 a.m.

Las Vegas is thought of as dry and hot, but the valley experiences intense rainfall and flash floods in summer. An extensive flood-control network captures stormflows and directs them around urbanized areas. Visit the flood control basins at Anthem Hills Park in Henderson that also serve as recreational open space. Transportation: Motorcoach, walking. **CM | 2.5 | \$50**

50 Downtown Redevelopment and Public Art (W051)

Wednesday, 8:30–10:30 a.m.

Visit the 18-block arts district in downtown Las Vegas. Explore the Arts Factory, which includes live-work units and the first urban lounge. Learn how the city has facilitated the development of a thriving arts scene through a one percent set-aside of the Capital Improvement Projects (CIP) funds. Transportation: Motorcoach, walking. **CM | 1.5 | \$39**

51 Hualapai West Canyon Tour (W052)

Wednesday, 9:00 a.m.–4:00 p.m.

Arizona's Hualapai tribe has done extensive tourism development along the Grand Canyon's West Rim. The newest destination, a result of tribal efforts, is a glass skywalk. Tour the \$30 million semicircular glass bottom walkway that juts outward and allows visitors to see 3,800 feet below, and learn about the Hualapai's economic development efforts. Transportation: Motorcoach, walking. Includes lunch. **CM | 3 | \$99**

52 Laughlin Riverwalk and Resort Tour (W053)

Wednesday, 9:00 a.m.–4:00 p.m.

The development of a Resort Corridor in Laughlin has accentuated the need for greater connectivity along the Colorado River. Tour a planned river walk that will connect resorts as far south as the Fort Mojave Tribal Lands, where a successful recreation and gaming resort has been developed. Transportation: Motorcoach, walking. Includes lunch. **CM | 2.5 | \$78**

53 Henderson Bird Viewing Preserve
(W054)

Wednesday, 9:00 a.m.–noon
Visit the Henderson Bird Viewing Preserve, a regional facility located on 93 acres. Its water ponds, used by the Henderson Waste Water Treatment Facility to recycle gray and waste water, make up the third largest body of water in Southern Nevada. Home to 200 bird species, the preserve offers opportunities to educate about the importance of riparian habitat. Transportation: Motorcoach, walking. **CM | 2 | \$48**

54 Walk Through Time on Fremont Street (W055)

Wednesday, 9:30–11:30 a.m.
This once dusty tent city is one of the world's largest displays of vintage neon and home to Viva Vision, the world's largest LED light screen. Examine the development and architectural evolution of Fremont Street since 1905 and how urban constraints have evolved through time to create a unique identity. Transportation: Motorcoach, walking. **CM | 1 | \$49**

55 Fremont East District Public-Private Partnership (W056)

Wednesday, 2:00–5:00 p.m.
Las Vegas is creating a new entertainment district that will include an eclectic mix of nongaming nightclubs, cocktail lounges, and entertainment hotspots in a retro Vegas atmosphere. Tour Fremont East, the result of a public-private partnership, which features relaxed alcohol restrictions, entertainment, and an enhanced streetscape. Transportation: Motorcoach, walking. **CM | 2.5 | \$55**

56 The Fremont Street Experience
(W057)

Wednesday, 2:00–5:00 p.m.
Visit the Fremont Street Experience, a world-famous, one-of-a-kind entertainment venue on a historic downtown Las Vegas street. The Fremont Street Experience, the cornerstone for the comprehensive redevelopment of downtown Las Vegas, is a private-public partnership between a private company owned by casino operators and the city. Transportation: Motorcoach, walking. **CM | 2.5 | \$55**

THURSDAY, MAY 1

57 The Latin Quarter
(W058)

Thursday, 8:00 a.m.–noon
Learn about creation of a master plan and investment strategy for this underdeveloped area. By capitalizing on transit improvements and other planned development, the city intends to transform this historic downtown into a vibrant entertainment district. Explore how the creation of a distinct brand would offer a unified downtown image. Transportation: Motorcoach, walking. **CM | 3.5 | \$45**

58 Historic Downtown Boulder City (W059)

Thursday, 8:00–11:30 a.m.
Visit the home of the Hoover Dam. Built to support construction of this significant 20th-century public works project, Boulder City remained under federal control until 1959. Stroll the historic downtown, where the city owns most of the vacant land and the citizens are determined to keep it that way. Transportation: Motorcoach, walking. **CM | 2.5 | \$55**

59 Nevada Solar One
(W060)

Thursday, 8:00–11:00 a.m.
Tour the third largest solar generation facility in the world, a 64-megawatt solar thermal power plant in the desert of Boulder City, just outside Las Vegas. Transportation: Motorcoach, walking. **CM | 2 | \$40**

60 North Fifth Street Corridor (W061)

Thursday, 8:00–11:00 a.m.
Explore the relationship between planned roadway improvements—dedicated lanes for bus rapid transit, increased capacity for automobiles and trucks, and multiuse paths for pedestrians and bicyclists—along the North Fifth Street Corridor and issues such as eminent domain, social justice, accessibility, roadway design, NIMBYism, interjurisdictional cooperation, and private property rights. Transportation: Motorcoach, walking. **CM | 2.5 | \$50**

61 Planning For Growth in Clark County (W062)

Thursday, 8:30 a.m.–noon
Learn how unincorporated Clark County, with 11 planning areas, updates two master plans annually. Take part in a case study and tour the unincorporated Town of Enterprise which, as the fastest growing planning area in the fastest growing metro area in the U.S., has gone from a population of 21,951 in 2000 to 121,502 in 2006. Transportation: Motorcoach, walking. **CM | 3 | \$50**

62 Lake Las Vegas Resort (W063)

Thursday, 8:30–11:30 a.m.
This 3,000-acre Mediterranean-themed community, which surrounds a 320-acre man-made lake, is a marvel of planning, engineering, and imagination. Tour its hillside neighborhoods, experience its world-class amenities, and learn about the environmental, zoning, and topographical hurdles that have been overcome to make it a premier resort destination. You might even spot bighorn sheep! Transportation: Motorcoach, walking. **CM | 2 | \$55**

63 Planning for Equestrian Trails in Las Vegas
(W064)

Thursday, 8:30–10:30 a.m.
Las Vegas has a number of “ranch estates” where horses are kept. The question of whether streets should be constructed to rural or urban standards in these areas has been a contentious issue. Visit some existing equestrian trails and learn how the city is trying to satisfy these area residents. Transportation: Motorcoach, walking. **CM | 1.5 | \$50**



MEET THE LOCALS. SIGHTSEEING TOURS BY VEGA TOURS WILL INTRODUCE YOU TO THE LOCAL FLORA AND FAUNA—LIKE THIS BASKING CHUCKWALLA—AND THE AREA'S TOP ATTRACTIONS. A GREAT OPTION FOR THE WHOLE FAMILY!

VEGA TOURS

The Rat Pack Tour

Vega Tour V001

Sunday, 9:00 a.m.–1:00 p.m.

Vega Tour V004

Monday, 1:00–5:00 p.m.

Walk in the footsteps of the Chairman of the Board on this tour with Babs Daitch, Frank Sinatra's former social director. Hear all the legends and scandals the Kings of Cool left behind in Vegas, while visiting their favorite hangouts. Transportation: Motorcoach, minimal walking. Snacks and beverages will be offered. | **\$30**

The Art Side of Vegas

Vega Tour V002

Sunday, 1:00–4:00 p.m.

No "Dogs Playing Poker" here. Las Vegas is home to some of the finest works of art in the world. You'll see many of them on this tour of Bellagio's Gallery of Fine Art and the Guggenheim Hermitage Museum. Transportation: Motorcoach, walking. | **\$78**

Hoover Dam and Lake Mead Cruise

Vega Tour V003

Monday, 8:30 a.m.–2:30 p.m.

Vega Tour V008

Wednesday, 8:30 a.m.–2:30 p.m.

Herbert Hoover thought the dam that bears his name was "the greatest engineering work of its character ever attempted by the hand of man." Find out what he meant on a tour of this technological marvel. Then relax over lunch on a cruise around Lake Mead. Transportation: Motorcoach, walking, cruise. Includes lunch. | **\$90**

Red Rock Canyon Tour

Vega Tour V006

Tuesday, 8:00 a.m.–2:00 p.m.

Visit one of the most fascinating ecosystems on the planet and get a taste of life in the Old West. This tour takes you to the Red Rock Canyon National Conservation Area and the Spring Mountain Ranch, once owned by eccentric millionaire Howard Hughes. Transportation: Motorcoach, walking. Includes lunch. | **\$75**

Grand Canyon Tour

Vega Tour V005

Tuesday, 7:30 a.m.–5:30 p.m.

The Grand Canyon, one of the seven natural wonders of the world, is a must-see destination. This tour will take you to the new glass-bottom Skywalk, suspended 4,000 feet above the floor of the canyon. Along the way, your guide will regale you with stories about cowboy and mining life. Transportation: Motorcoach, walking. Includes lunch. | **\$185**

Colorado River Tour

Vega Tour V007

Wednesday, 8:00 a.m.–2:00 p.m.

Sit back and relax as you float down the Colorado River. Your guide will explain the rich history of the Black Canyon and point out desert animals like osprey and bighorn sheep. We'll make several stops for photos. Transportation: Motorcoach, walking, rafting. Includes lunch. | **\$135**

Vegas: Past, Present, and Future

Vega Tour V009

Wednesday, 9:30 a.m.–3:30 p.m.

Take a trip back in time to learn about the geologic formations, desert landscapes, and ancient tribes of Nevada at the Springs Preserve. Then fast-forward to modern-day Vegas: lunch at Wolfgang Puck's Cafe, a walk down Fremont Street, and a trip to the Neon Museum. Transportation: Motorcoach, walking. Includes lunch. | **\$99**

Reserve your tour tickets with The Vega Group by mailing or faxing the form on page 79. Tickets are limited; advance reservations are required. Faxed reservations will be confirmed by fax. If you are mailing your payment and desire a confirmation, please include a self-addressed stamped envelope or provide an e-mail address.

Deadline for advance tour purchase is Thursday, March 27, 2008.

If a tour in which you are interested sells out prior to its departure time, you can add your name to the first-come, first-served waiting list at The Vega Group's tour desk in the Paris Convention Center starting one hour before the tour's departure time. If a minimum number of guests do not sign up for a tour, The Vega Group reserves the right to cancel the tour and issue a full refund.

All tours will depart from and return to the Paris Convention Center at Paris Las Vegas. All tour tickets must be picked up at The Vega Group tour desk in the Paris Convention Center at least one hour before the tour's departure time.

If you have any questions concerning any of the tours or have any special needs, please contact The Vega Group at 504-488-5222, Monday through Friday, 9:30 a.m.–5:00 p.m. (CDT) or by e-mail at apa2008@vegagroup.com.

Changes, cancellations, and requests for full refunds must be directed in writing to The Vega Group and postmarked prior to March 27, 2008. Cancellations will be assessed a \$5 processing fee per ticket. No refunds will be issued after Thursday, March 27, 2008.

NEW PROFESSIONALS

Climbing the Career Ladder (S802)

Monday, 4:00–5:15 p.m.

Ready for a career change? Experienced professionals share tips they've used to move their careers forward. Topics include volunteering for professional organizations, shifting between the public and private sectors, and entry-level internships.

Starting Your Own Firm (S806)

Tuesday, 4:30–5:45 p.m.

Want to make your own hours and be your own boss? Meet with like-minded new professionals and an experienced private practitioner to find out what is needed to start, maintain, and grow your own firm.

PLANNING COMMISSIONERS
AND APPOINTED OFFICIALS**Hot Topics for Small Towns and Rural Areas (S805)**

Tuesday, 3:00–4:15 p.m.

Small towns have unique problems. Select the topics to discuss with fellow officials. Does your commission encompass rural areas? Don't miss this discussion.

Working with the Media (S807)

Tuesday, 4:30–5:45 p.m.

Discuss your experience working with and responding to the media in your planning department. Learn about APA's Communications Plan and tips that can assist your media outreach efforts.

The Constitution and Performance of the Planning Commission (S809)

Wednesday, 10:30–11:45 a.m.

What makes for a good planning commission? Offer your insights into the make up and performance of the commission in this open forum of the APA Planning Officials Committee.

Hot Topics for Large Cities and Urban Areas (S810)

Wednesday, 2:30–3:45 p.m.

Large cities deal with both growth and decline. Share your experiences with fellow commissioners and officials on the issues facing cities and urban areas. Don't miss this discussion if you're confronted with rapid growth, neighborhood revitalization, a shrinking school population, or new economic development.

Hot Topics for Suburban Communities (S814)

Thursday, 9:30–10:45 a.m.

Some suburbs are facing unprecedented growth. Others are built out. Your community balances the needs of community building with the demands of new growth and change. Discuss these issues with fellow officials.

PLANNING DIRECTORS

Town-Gown Relationships (S801)

Monday, 2:30–3:45 p.m.

College towns offer unique opportunities and challenges for planners. This discussion provides a forum for planning directors to share their "pass" and "fail" experiences, including regulating institutional growth, addressing impact on neighborhoods, and tapping into creative economic development potential.

Planning and the Media (S804)

Tuesday, 1:30–2:45 p.m.

Take this opportunity to discuss the challenge and satisfaction of working with the media on planning stories. Learn how the APA's Communications Plans can assist your media outreach efforts.

Planning Director Facilitated Discussion (S811/S815)

Wednesday, 2:30–3:45 p.m.

Thursday, 9:30–10:45 a.m.

SPECIAL INTEREST

Food Planning Action Plan (S803)

Monday, 4:00–5:15 p.m.

The APA Food Planning Policy Guide was approved in 2007, and a PAS Memo and PAS Report are under way. Join us in developing a three-year Action Plan to advance food planning within APA, individual communities, and across the country.

Connecting Planners, Brownfields, and the Community (S813)

Wednesday, 4:00–5:15 p.m.

In this interactive discussion of the challenges and opportunities posed by brownfield redevelopments, learn about the APA's Creating Community-Based Brownfield Strategies initiative and help identify tools, case studies, and other resources that should be included in the new best practices manual.

STUDENTS

A Career in Advocacy (S800)

Monday, 1:00–2:15 p.m.

Do you want to have a direct impact on the policies that shape planning and find out what your fellow students are doing as activist planners? Join this discussion on how planners can work in advocacy at many levels and in many arenas.

A Career in Community Development or Neighborhood Planning (S808)

Wednesday, 9:00–10:15 a.m.

Planning at the grassroots level takes a special affinity for people and a special set of skills. Discuss what it takes to make a career commitment in this field and the outcomes of meaningful neighborhood planning.

Planning High Growth Areas (S812)

Wednesday, 2:30–3:45 p.m.

One of the biggest challenges facing planning is rapid growth. Growth also brings the opportunity to plan innovatively. Find out what it's like to work at the vortex. Bring your insights to the discussion.

SPECIAL EVENTS

AICP Fellows Induction Ceremony and Reception (P002)

Sunday, 6:30–9:30 p.m.

Join the AICP College of Fellows as they welcome the 2008 class of distinguished members to their ranks. Selected AICP members who have made lasting contributions to the practice and profession of planning will be elevated to Fellow at this elegant event. The ceremony, held at Bally's Las Vegas Hotel, will be followed by a catered reception. Black tie optional. Registration required. The 2008 Fellows will receive a complimentary ticket for this event. Additional tickets may be purchased for \$70. No refunds or exchanges after March 27.

Planners' Prayer Breakfast (P200)

Monday, 7:00–8:15 a.m.

Start off your conference with a time of informal fellowship and worship. Sponsored by the Christian Planners Fellowship. Includes full breakfast. | **\$47**

Opening Reception (P001)

Monday, 7:00–10:00 p.m.

How many planners does it take to have a great time? Join us at Paris Las Vegas for an evening of good food, music, and dancing. We've even invited a couple of celebrities to round out the evening. Connect with your APA colleagues and experience a memorable evening as you launch a week of planning education. A ticket is included for registrants in all categories. Additional tickets may be purchased on the registration form on page 75 for \$70. Children under the age of 12 will be admitted free.

Planning Commissioners and Appointed Officials Breakfast (P005)

Tuesday, 6:45–8:00 a.m.

Join your fellow planning officials for socializing and a presentation by Robert Lang, director of the Institute for Metropolitan Research at Virginia Tech and author of *Boomburbs: The Rise of America's Accidental Cities*. Invite your planning staff to join you and meet planning commissioners from around the country. A hot buffet breakfast is served. Registration required. No refunds or exchanges after March 27. | **\$48**

Planning Directors Breakfast (P006)

Tuesday, 6:45–8:00 a.m.

Join your fellow planning directors for socializing and discussion. Tables are identified by types of planning agencies (big city, regional) to facilitate discussion. Relax, meet your colleagues, and start the day off with this social event. A hot buffet breakfast is served. Registration required. No refunds or exchanges after March 27. | **\$48**

The Fellows of AICP Meeting (X104)

Tuesday, 11:00 a.m.–12:15 p.m.

Awards Luncheon (P004)

Wednesday, noon–2:00 p.m.

Enjoy lunch as APA and AICP present the 2008 National Awards for Planning, a multi-media celebration of the best projects, plans, and planners in the country. Awards honor planning landmarks and pioneers, journalists and students, citizens and professionals who have achieved excellence and helped to improve the quality of life in numerous communities. One ticket is included with full registration. You may purchase additional tickets on the registration form on page 75 for \$55 each.

APA and AICP Annual Meeting and Awards (X113)

Wednesday, 2:30–3:45 p.m.

Highlighting this year's annual meeting will be the announcement of the APA and AICP election results and addresses by APA President Robert Hunter, FAICP, and AICP President Graham Billingsley, AICP. The awards ceremony will include a program featuring the accomplishments of several individuals and organizations being presented with 2008 APA and AICP Planning Awards. Be sure to attend.

HOSPITALITY SUITES

Planning Commissioners and Appointed Officials Hospitality Suite

Monday through Thursday

Stop by the hospitality room at your leisure and meet other commissioners, chat about developments in your hometowns, or just relax. Facilitated discussions will be held in the suite (see page 67). All other officials are welcome.

Planning Directors Hospitality Suite

Monday through Thursday

Stop by the hospitality suite at your leisure to look at products, meet your peers, or just take a break. Facilitated discussions are scheduled throughout the conference (see page 67).

Student Hospitality Suite

Monday through Thursday

Stop by the hospitality room to meet other students and relax for a few minutes. Facilitated discussions are scheduled throughout the conference (see page 67).

DIVISION MEETINGS AND EVENTS

Most of the following division events will be held at either Paris or Bally's Las Vegas Hotels; exact locations will be listed in the final program.

Gays and Lesbians in Planning Division Reception and Dinner (X001)

Sunday, 6:30–11:30 p.m.

Event will be held off-site.

Environment, Natural Resources, and Energy Division Meeting (X002)

Monday, 6:15–8:00 a.m.

Federal Planning Division Business Meeting (X003)

Monday, 6:15–8:00 a.m.

Housing and Community Development Division Annual Business Meeting (X004)

Monday, 6:15–8:00 a.m.

Private Practice Division Annual Business Meeting (X005)

Monday, 7:00–8:00 a.m.

City Planning and Management Division Meeting and Reception (X006)

Monday, 5:30–7:00 p.m.

Economic Development Division Member Reception (X007)

Monday, 5:30–7:00 p.m.

International Division Annual Meeting (X008)

Monday, 5:30–7:00 p.m.

Latinos and Planning Division Business Meeting (X009)

Monday, 5:30–7:00 p.m.

New Urbanism Division Business Meeting (X010)

Monday, 5:30–7:00 p.m.

Technology Division Awards Ceremony and Business Meeting (X011)

Monday, 5:30–7:00 p.m.

Planning and the Black Community Division Business Meeting (X023)

Monday, 5:30–7:00 p.m.

Small Town and Rural Planning Division Annual Business Meeting (X012)

Monday, 5:30–6:30 p.m.

Planning and Law Division Networking Reception and Annual Business Meeting (X013)

Monday, 5:45–7:00 p.m.

Indigenous Planning Division Business Meeting (X014)

Monday, 6:00–7:00 p.m.

Regional and Intergovernmental Planning Division Program and Business Meeting (X015)

Tuesday, 6:15–8:00 a.m.

County Planning Division Networking Breakfast and Business Meeting (X016)

Tuesday, 6:30–8:00 a.m.

Planning and Women Division Business Meeting (X017)

Tuesday, 7:00–8:00 a.m.

Planning and the Black Community Division Scholarship Luncheon (P201)

Tuesday, 11:30 a.m.–1:30 p.m.

This luncheon supports the Robert A. Catlin and David W. Long Memorial Scholarship. Named after committed planners and long-standing Planning and the Black Community Division members, the scholarship serves to foster increased interest among African American undergraduates in urban planning as a graduate field of study and as a professional career. \$20 of the ticket price is tax-deductible. No refunds or exchanges after March 27. | **\$65**

Joint Division Reception (X018)

Tuesday, 6:00–7:30 p.m.

Attendees are welcome to attend and explore APA's topical and special interest divisions. Division members can meet and socialize with colleagues.

Urban Design and Preservation Division Reception (X019)

Tuesday, 8:00–10:00 p.m.

Reception will be held at Morelli House, 814 Bridger Ave., Las Vegas.

Transportation Planning Division Business Meeting and Reception (X020)

Wednesday, 5:30–7:30 p.m.

Gays and Lesbians in Planning Division Annual Business Meeting (X021)

Wednesday, 5:30–6:30 p.m.

Resort and Tourism Division Business Meeting and Reception (X022)

Wednesday, 5:45–7:45 p.m.

ALLIED MEETINGS AND EVENTS

Most of the following events will be held at either Paris or Bally's Las Vegas Hotels; exact locations will be listed in the final program.

Planning Accrediation Board General Meeting and School Reviews (X100)

Saturday, 8:00 a.m.–5:00 p.m.

Association of Collegiate Schools of Planning Governing Board Meeting (X101)

Saturday, 8:30 a.m.–5:00 p.m.

Planning Accrediation Board General Meeting and School Reviews (X102)

Sunday, 8:00 a.m.–5:00 p.m.

American Society of Consulting Planners (ASCP) Board Meeting (X103)

Monday, 7:00–8:15 a.m.

JAPA Editorial Advisory Board Meeting (X105)

Tuesday, 10:15–11:30 a.m.

APA Florida/Florida Planning Schools Annual Reception (X116)

Tuesday, 5:30–7:30 p.m.

California Polytechnic State University, Pomona Alumni Reception (X106)

Tuesday, 6:00 p.m.

University of Oklahoma Alumni Reception (X107)

Tuesday, 6:00–8:00 p.m.

California Polytechnic State University, San Luis Obispo Alumni Reception (X108)

Tuesday, 6:30–8:30 p.m.

Virginia Tech Alumni Reception (X109)

Tuesday, 6:30–8:30 p.m.

Combined University Alumni Reception (X110)

Tuesday, 6:30–8:00 p.m.

Complimentary to conference delegates. To include your school in the cash bar reception, e-mail dalongi@planning.org.

University of North Carolina Alumni Reception (X115)

Tuesday, 6:30–8:00 p.m.

University of Pennsylvania Alumni Reception (X112)

Tuesday, 6:30–8:00 p.m.

Illinois/UIUC/UIC Alumni Reception (X114)

Tuesday, 7:00 p.m.

University of Cincinnati/Ohio State University Combined Alumni Reception (X111)

Wednesday, 6:30–8:00 p.m.

Conference Site

Conference sessions will be held at Bally's and Paris hotels, located at 3645 and 3655 Las Vegas Blvd. The two hotels are connected (please refer to map in Final Program). All sessions (opening keynote, conference sessions, GIS sessions, registration, exhibits, awards luncheon, and closing keynote) will be held at Bally's and Paris hotels. All buses for tours and mobile workshops will depart from the Paris hotel.

Child Care

APA will provide child care (CAMP APA) for the children of registered participants for \$30 per day, regardless of the number of hours or children. Please indicate when registering for the conference if you would like to have child care. APA will contact you with more information. For more details, e-mail jkrol@planning.org. Registration deadline is March 27.

Arrangements for Persons with Disabilities

APA strives to hold meetings that are accessible to all. Tell us what accommodations you require to make your participation more enjoyable. We suggest that people with disabilities make hotel reservations at Bally's Hotel, which is attached to the Events Center. If you are in a wheelchair and plan to attend mobile workshops, please contact APA before March 27. Call Julia Krol at 312-786-6738 or e-mail jkrol@planning.org.

GENERAL INFORMATION

Conference Website

Check out www.planning.org/nationalconference for the most up to date information. If there is a discrepancy between the preliminary program and the website, the website is correct.

Registration Hours

Registration will be held in the Silver Room within the Grand Ballroom in Bally's Las Vegas. Registration hours are:
 Saturday, 1:00–5:00 p.m.
 Sunday, 7:30 a.m.–5:00 p.m.
 Monday, 7:30 a.m.–5:00 p.m.
 Tuesday, 7:30 a.m.–5:00 p.m.
 Wednesday, 7:30 a.m.–4:00 p.m.
 Thursday, 7:30–10:00 a.m.

Registration Scholarships

APA is offering 25 conference scholarships that will reduce the registration fee to \$160. To be eligible, you must be a member of APA, have not received a scholarship for the 2007 National Planning Conference, and earn less than \$35,000 a year. Download the application from the APA website (www.planning.org), or e-mail jkrol@planning.org. Applications must be submitted by January 24, 2008. Recipients will be notified by February 21.

Certification Maintenance Credits

AICP members can earn Certification Maintenance (CM) credits for many conference activities. When CM credits are available, they are noted at the end of an activity description. More information about AICP's CM program is at www.planning.org/cm.



Certification Maintenance