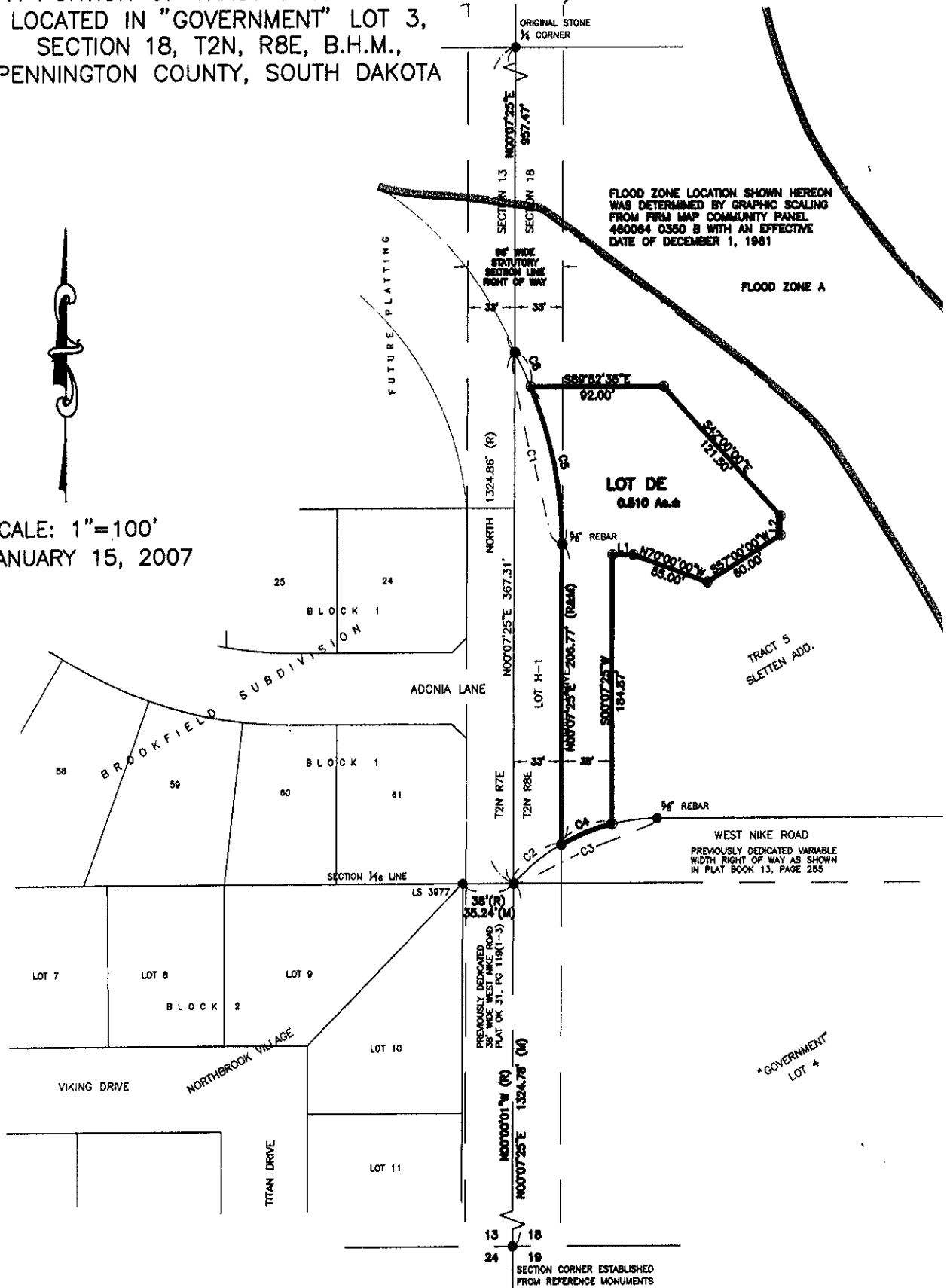


PLAT OF LOT DE OF TRACT 5, SLETTEN ADDITION

(FORMERLY A PORTION OF TRACT 5 OF SLETTEN ADDITION)
LOCATED IN "GOVERNMENT" LOT 3,
SECTION 18, T2N, R8E, B.H.M.,
PENNINGTON COUNTY, SOUTH DAKOTA

SCALE: 1"=100'
JANUARY 15, 2007



C:\DRAWINGS\13003\PHASE 2\PLATSHT-DRN-EASE.DWG, 8x11, 8/27/2007 9:57:21 AM