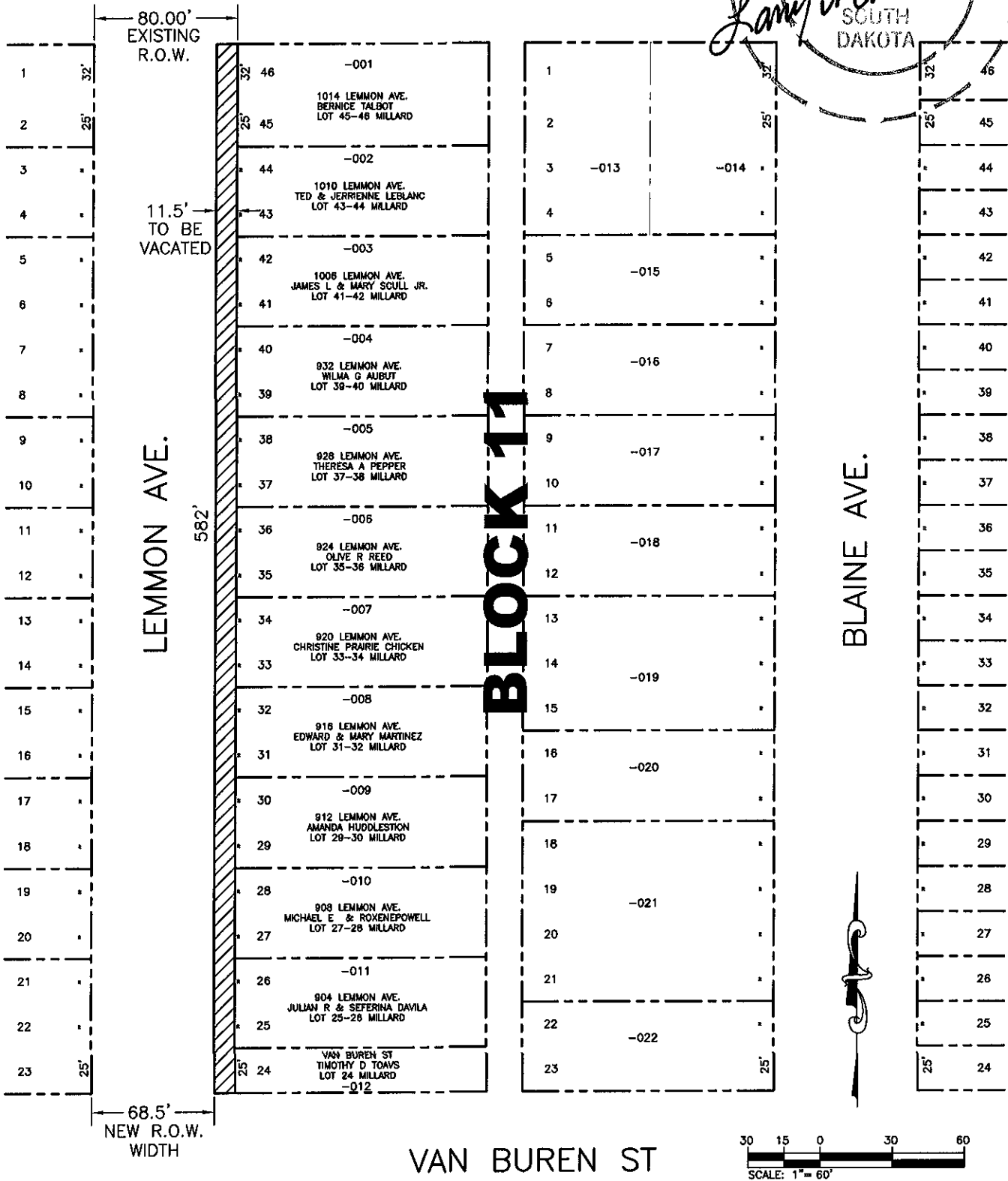
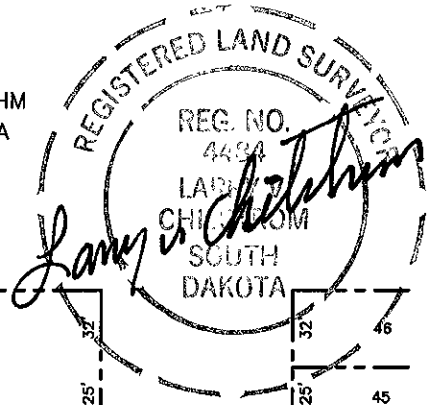


EXHIBIT "A"

PORTION OF RIGHT-OF-WAY TO BE VACATED
 IN BLOCK 11, MILLARD SUBDIVISION
 LOCATED IN THE NE1/4 SECTION 36, T2N, R7E BHM
 RAPID CITY, PENNINGTON COUNTY, SOUTH DAKOTA
COLLEGE AVE.



LEMMON AVE. RECONSTRUCTION
 PROJ. # ST06-1438 CIP # 50120