



Rapid City Police Department

300 Kansas City Street
Rapid City, South Dakota 57701-2890
605-394-4131

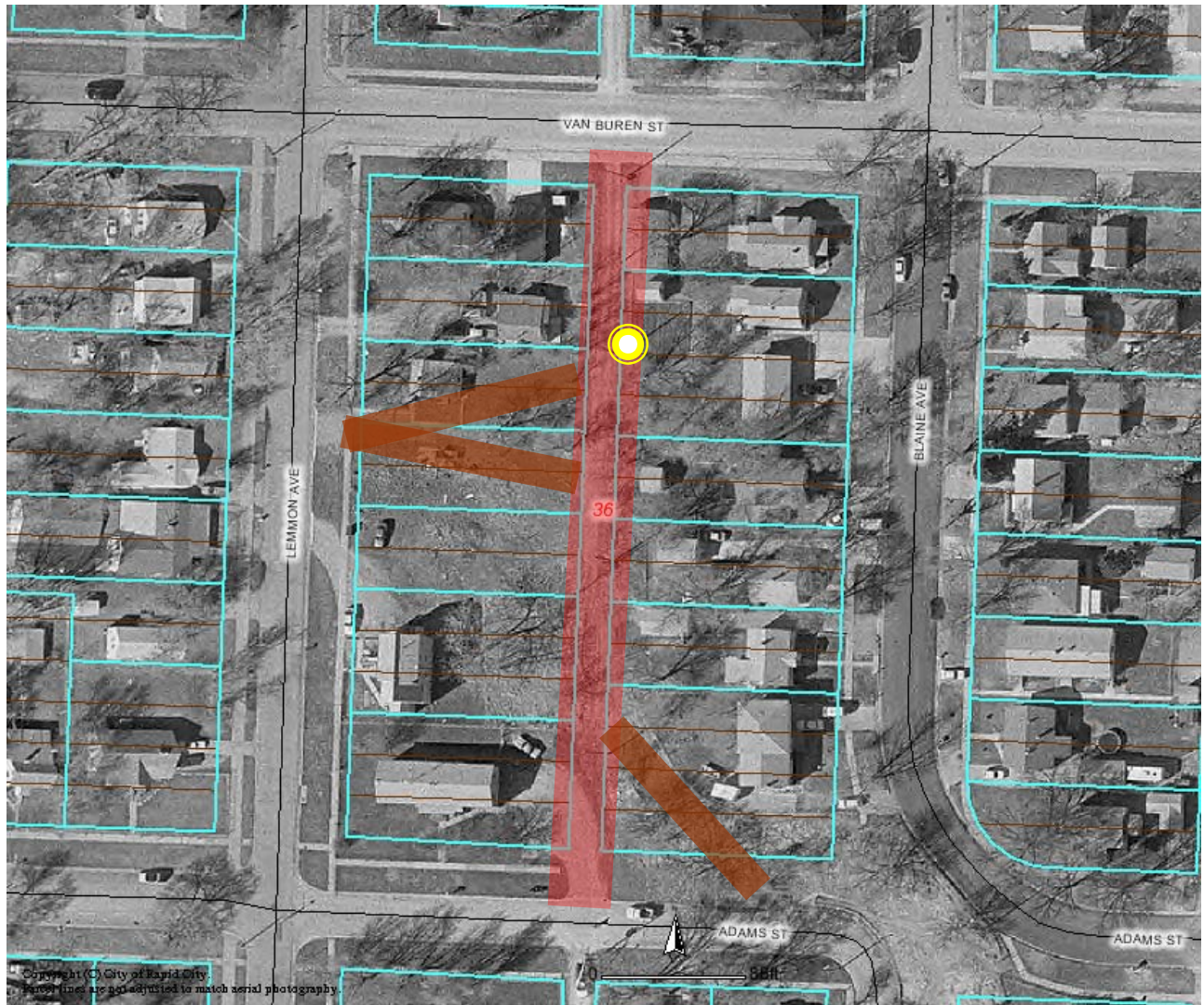
An Internationally Accredited Law Enforcement Agency
Craig Tieszen, Chief of Police Jim Shaw, Mayor






December 12, 2006

Captain Steve Allender
Rapid City Police Department

Based on your request and e-mails from the community I conducted an analysis of the alley in the 800 block between Lemmon Ave. and Blaine Ave.



-  The Alley in Question
-  Major Foot Traffic Paths Besides the Alley Itself
-  Proposed Light Location

I have also looked at the documented calls for service along both sides of this alley since July 1, 2006. The following list includes all calls for service in the 800 blocks of both Lemmon Ave. and Blaine Ave. Only the odd addresses for Blaine Ave. and the even addresses for Lemmon Ave. are adjacent to the alley.

Incident #	Call Date/Time	Dispo	Location	Incident Type
=====	=====	=====	=====	=====
2006-00300859	12/10/2006 00:30:52		800 BLAINE AVE, Rapid City	EXTRA PATROL
2006-00299662	12/06/2006 02:57:07		829 BLAINE AVE, Rapid City	EXTRA PATROL
2006-00299643	12/06/2006 01:33:40		829 BLAINE AVE, Rapid City	EXTRA PATROL
2006-00299642	12/06/2006 01:33:09		827 BLAINE AVE, Rapid City	DPP
2006-00299625	12/06/2006 00:38:04		829 BLAINE AVE, Rapid City	Traffic Stop
2006-00299541	12/05/2006 19:26:31		829 BLAINE AVE, Rapid City	Miscellaneous
2006-00299346	12/05/2006 02:33:37		800 BLAINE AVE, Rapid City	EXTRA PATROL
2006-00299336	12/05/2006 01:12:53		829 BLAINE AVE, Rapid City	EXTRA PATROL
2006-00299053	12/04/2006 03:12:41		829 BLAINE AVE, Rapid City	EXTRA PATROL
2006-00298994	12/04/2006 00:00:35		829 BLAINE AVE, Rapid City	EXTRA PATROL
2006-00296027	11/22/2006 17:11:08		810 BLAINE AVE, Rapid City	Deliver Emergency Message
2006-00295795	11/21/2006 18:15:45		829 BLAINE AVE, Rapid City	911 Hang Up
2006-00291598	11/06/2006 06:59:41		829 BLAINE AVE, Rapid City	DPP
2006-00291541	11/05/2006 21:00:32		829 BLAINE AVE, Rapid City	EXTRA PATROL
2006-00291154	11/04/2006 17:27:41		800 BLAINE AVE, Rapid City	Traffic Stop
2006-00289611	10/30/2006 07:38:25		829 BLAINE AVE, Rapid City	DPP
2006-00285832	10/17/2006 02:39:06	RESV-1	822 BLAINE AVE, Rapid City	Assault
2006-00285283	10/14/2006 22:56:43		812 BLAINE AVE, Rapid City	Suspicious Activity
2006-00281526	10/02/2006 07:45:26		808 BLAINE AVE, Rapid City	Burglary
2006-00281123	09/30/2006 18:20:22		822 BLAINE AVE, Rapid City	OTHER
2006-00281025	09/30/2006 12:15:19		822 BLAINE AVE, Rapid City	Parking Violation
2006-00278734	09/22/2006 11:51:13		802 BLAINE AVE, Rapid City	NSF
2006-00278181	09/20/2006 14:54:46		822 BLAINE AVE, Rapid City	THEFT
2006-00274973	09/09/2006 09:40:23	LEO - 1	819 BLAINE AVE, Rapid City	FOLLOW UP
2006-00274969	09/09/2006 09:13:22	LEO - 1	819 BLAINE AVE, Rapid City	FOLLOW UP
2006-00274926	09/09/2006 03:00:50	LEO - 1	811 BLAINE AVE, Rapid City	Noise Disturbance
2006-00273140	09/02/2006 23:24:44	LEO - 1	819 BLAINE AVE, Rapid City	Noise Disturbance
2006-00272283	08/31/2006 04:21:10	RPT - 1	806 BLAINE AVE, Rapid City	Rape
2006-00271463	08/27/2006 23:34:52	FIN - 2	812 BLAINE AVE, Rapid City	Suspicious Activity
2006-00267551	08/14/2006 18:50:33	LEO - 1	822 BLAINE AVE, Rapid City	Missing Person
2006-00266099	08/10/2006 10:10:46	LEO - 1	814 BLAINE AVE, Rapid City	FOLLOW UP
2006-00259826	07/21/2006 23:32:19	GPA - 1	814 BLAINE AVE, Rapid City	Noise Disturbance
2006-00255311	07/07/2006 21:47:58	GPA - 1	819 BLAINE AVE, Rapid City	Suspicious Activity
2006-00300807	12/09/2006 21:49:11	FIN - 1	800 LEMMON AVE, Rapid City	Miscellaneous
2006-00293498	11/12/2006 15:26:01	FIN - 1	828 1/2 LEMMON, Rapid City	EXTRA PATROL
2006-00293421	11/12/2006 08:37:03		828 LEMMON AVE, Rapid City	Miscellaneous
2006-00293238	11/11/2006 16:43:12		828 LEMMON AVE, Rapid City	Accident
2006-00292087	11/07/2006 22:03:24		810 LEMMON AVE 3, Rapid City	DIST
2006-00291922	11/07/2006 10:53:50		828 LEMMON AVE, Rapid City	EXTRA PATROL
2006-00291836	11/07/2006 02:10:32		828 LEMMON AVE, Rapid City	Miscellaneous
2006-00291639	11/06/2006 10:05:00		823 LEMMON AVE, Rapid City	THEFT
2006-00291584	11/06/2006 03:34:47		828 LEMMON AVE, Rapid City	FOLLOW UP
2006-00291554	11/05/2006 22:47:57		828 LEMMON AVE, Rapid City	Miscellaneous
2006-00291377	11/05/2006 07:43:16		828 LEMMON AVE, Rapid City	EXTRA PATROL
2006-00291329	11/05/2006 02:06:49		800 LEMMON AVE, Rapid City	Suspicious Activity
2006-00291105	11/04/2006 15:18:28		828 LEMMON AVE, Rapid City	FOLLOW UP
2006-00285503	10/15/2006 19:06:41		800 LEMMON AVE, Rapid City	Miscellaneous
2006-00277959	09/19/2006 17:23:05		800 LEMMON AVE, Rapid City	THEFT
2006-00276860	09/15/2006 13:57:28		821 LEMMON AVE, Rapid City	DIST

2006-00274364	09/07/2006 12:34:20	LEO - 1 825 LEMMON AVE, Rapid City	Intoxicated Subject
2006-00271120	08/26/2006 17:12:24	LEO - 1 815 LEMMON AVE, Rapid City	DPP
2006-00269464	08/21/2006 01:45:53	ADV - 1821 LEMMON AVE, Rapid City	DIST
2006-00268427	08/17/2006 18:38:28	LEO - 1 825 LEMMON AVE, Rapid City	DIST
2006-00267865	08/15/2006 21:43:52	RESV-1 830 LEMMON AVE, Rapid City	DIST
2006-00266883	08/12/2006 16:22:30	SRV - 1 821 LEMMON AVE, Rapid City	DIST
2006-00266741	08/12/2006 06:32:21	RPT - 3 829 LEMMON AVE, Rapid City	Suicide
2006-00265298	08/08/2006 08:10:45	AR - 1 828 1/2 LEMMON, Rapid City	ASSIST
2006-00265178	08/07/2006 21:22:42	GPA - 1 828 LEMMON, Rapid City	UNWANTED SUBJECT
2006-00262871	07/31/2006 20:15:58	RESV-1 830 LEMMON AVE, Rapid City	Child Abuse/Neglect
2006-00261813	07/28/2006 07:54:10	CIT - 1 800 LEMMON AVE, Rapid City	Traffic Stop
2006-00261795	07/28/2006 03:26:47	RESV-1 821 LEMMON AVE, Rapid City	DIST
2006-00261790	07/28/2006 02:42:53	RESV-1 821 LEMMON AVE, Rapid City	DIST
2006-00261502	07/27/2006 08:01:42	UNF - 1 828 1/2 LEMMON, Rapid City	UNWANTED SUBJECT
2006-00260152	07/22/2006 21:47:43	LEO - 1 829 LEMMON AVE, Rapid City	Child Abuse/Neglect
2006-00260042	07/22/2006 15:43:49	AR - 1 828 1/2 LEMMON, Rapid City	FOLLOW UP
2006-00258138	07/16/2006 20:01:33	FIN - 1 815 LEMMON AVE, Rapid City	PROP
2006-00255320	07/07/2006 22:37:18	LEO - 1 821 LEMMON AVE, Rapid City	UNWANTED SUBJECT
2006-00254414	07/05/2006 03:34:17	GPA - 2 807 LEMMON AVE, Rapid City	DIST
2006-00254204	07/04/2006 20:59:46	LEO - 1 828 1/2 LEMMON, Rapid City	Fireworks
2006-00253595	07/03/2006 03:13:08	UNF - 1 800 LEMMON AVE, Rapid City	Weapons
2006-00253003	07/01/2006 16:16:35	UNF - 1 821 LEMMON AVE, Rapid City	DIST

From the calls listed there are 3 Destruction of Private Property (DPP) or graffiti calls during this period. Two DPP calls are from 829 Blaine Ave. and one from 827 Blaine Ave. There were also, mainly due to the increase of graffiti in the area, 11 Extra Patrols conducted.

I know there is some interest in the city vacating the alley. This would allow the residents to care for the alley and even block it from vehicular traffic. I am not opposed to this course of action. It would definitely give the residents a feeling of ownership and control over the alley. They would also feel empowered to question why someone would be traveling through the alley and call the police if they deemed it to be suspicious. Be careful not to isolate the alley and create a haven where criminals traveling on foot will feel safe to commit crimes. Also remember that if the alley is totally closed to vehicular traffic the police will have a more difficult time maintaining a presence there.



I would not expect the amount of graffiti to be reduced strictly by giving control of the alley to the residents, even if it is blocked from vehicular traffic. The main concern should be the amount of foot traffic through the alley. Utilize the Crime Prevention Through Environmental Design (CPTED) strategy of Natural Access Control. This is done to deny access to areas by creating a perception of risk in offenders. It is also used to prevent public access to private areas. Examples include using landscaping to control access to graffiti-prone walls, limiting the number of entrances and exits for better control, and reducing public pathways through private areas.

Another of the main strategies of CPTED is Natural Surveillance. The normal users (the residents) need to be able to observe all activity in the alley. If the residents were able to

observe the alley the abnormal users (the people committing improper acts like graffiti) would feel there is a greater risk of being caught.



I recommend the small trees lining the alley be cut down to facilitate natural surveillance. The resident of 827 Blaine Ave. has several lilac bushes blocking his view of the alley. He admitted this gives him a buffer from having to see some of the other properties that are not well maintained. He also would not be opposed to cutting the trees and trimming his bushes so he could see what is occurring in the alley. Other residents will have a more difficult time seeing into the alley due to the

placement of outbuildings on their property. The various garages and sheds block their view. These residents will need to make a habit of walking in the alley from time to time and seeing what is going on there.

Another recommendation to enhance surveillance is lighting the alley. In this case light fixtures mounted up on one of the power poles would be the most beneficial. I looked at the conditions during the hours of darkness and most of the alley is pitch black. There is no lighting for the northern end of the alley what so ever. There is a street light on a power pole at the south end of the alley that provides light for the parking area of the apartment building, but none of this light affects the middle or north end due to the increase in elevation as one travels north.



There are areas several areas needing maintenance. I observed a boat that is sitting on the ground and construction materials stacked up. Also the dumpster at the south end of the alley that is for the apartment building has trash around it. This dumpster could be enclosed so it would not be observed. The trash that accumulates around this receptacle also needs to be picked up on a regular basis. Getting compliance from these property owners will give the area a “cared for” look and further the goals of deterring criminal activity. I would also recommend the parking area for the apartment building be fenced to prevent vehicles from driving north in the alley and up the hill.



In summary there needs to be a multi-pronged approach to resolving some of the problems that are concerning the residents adjacent to this alley.

- Continue to cover graffiti. It is a very good practice to cover this up right away. This helps to discourage repeat offenses.
- Increase natural surveillance by trimming bushes, cutting down small trees lining the alley, improving the lighting and ensuring the residents can see from their homes into the alley.
- Work the code enforcement issues to improve the looks of the neighborhood to give the impression that the residents care for their community.
- Integrate natural access control measures. Be creative in using fencing and landscaping to discourage foot traffic through the alley.
- Encourage residents to be diligent and keep a watchful eye on the alley and report any suspicious activity.
- Continue to have police officers conduct extra patrol in the area as time and resources permit.
- Residents need to be mindful that if the alley is blocked from vehicular traffic that there may come a time when the sewer line needs to be accessed.

Implementing these recommendations will improve the looks of the neighborhood and give a sense of empowerment to the residents. These feelings will improve the quality of life for those residents. This will be seen by would-be criminals and deter them from undesired behavior.

Sincerely,

WAYNE ASSCHERICK
Crime Prevention Officer