

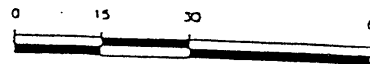


EXHIBIT 'A'

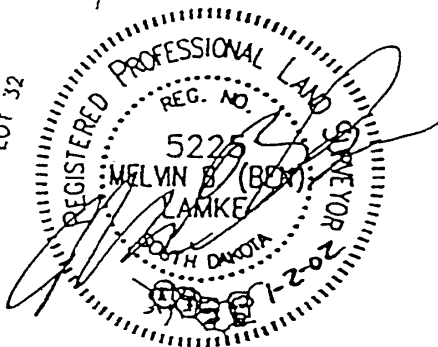
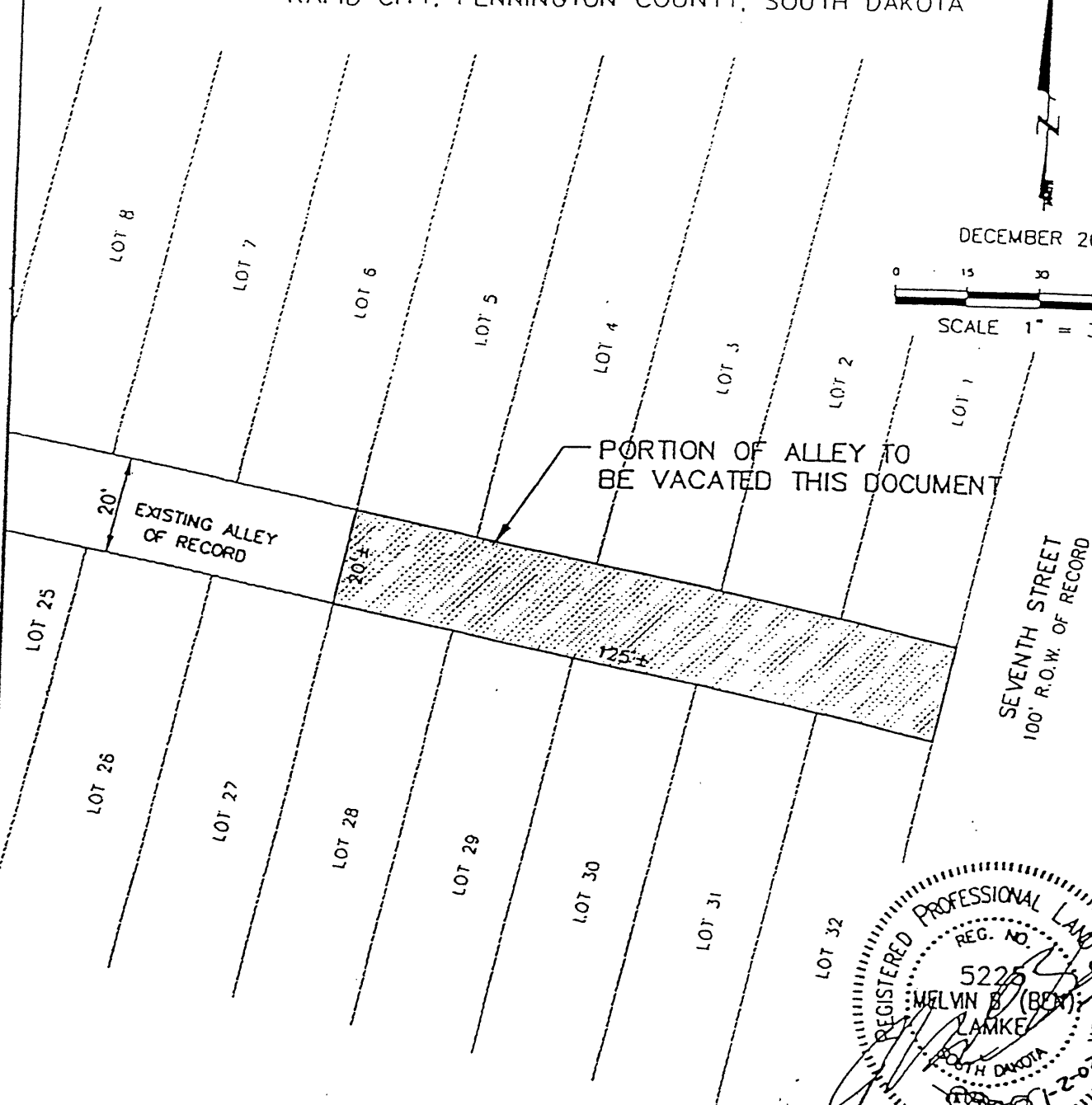
# VACATION OF THAT PORTION OF THE ALLEY ADJACENT TO LOTS 1 - 5 AND LOTS 28 - 32 OF BLOCK 103 ORIGINAL TOWN OF RAPID CITY

LOCATED IN THE NW¼ OF THE NW¼ SECTION 1, T1N, R7E, BHM  
RAPID CITY, PENNINGTON COUNTY, SOUTH DAKOTA

DECEMBER 20, 2001



SCALE 1" = 30'



Renner & Sperlich Engineering Co.

616 Sixth St. • Rapid City, SD 57701 • 605/342-1191  
FAX: 605/342-1405 • E-MAIL: RSECORAPIDNET.COM