

LF081501-12

SAMHSA FY 2001 Grant Opportunity

Grants

Application Information:**Center for Substance Abuse Treatment (CSAT)****Grants to Expand Substance Abuse Treatment Capacity in Targeted Areas of Need
Guidance for Applicants (GFA) No. PA 00-001**

The **Targeted Capacity Expansion Program** is intended to expand substance abuse treatment capacity in targeted areas for a targeted response to treatment capacity problems and/or emerging trends. This program is designed to address gaps in treatment capacity by supporting rapid and strategic responses to demands for substance abuse (including alcohol and drug) treatment services in communities with serious, emerging drug problems as well as communities with innovative solutions to unmet needs. This Program Announcement (PA) is a reissuance (with revisions) of a prior Guidance for Applicants (GFA) by the same title, "Targeted Capacity Expansion," GFA No. TI 99-002.

Status: Open**Note recurring receipt dates (depending on availability of funding):**

■ January 10

■ May 10

■ September 10

[Click here to download WordPerfect 6/7/8 file of program announcement](#)

[Click here to download Adobe Acrobat file of program announcement](#)

[GFA Part II is required; click here for more information](#)

For a printed copy of the Program Announcement (PA) call:

National Clearinghouse for Alcohol and Drug Information (NCADI) at
800-729-6686
800-487-4889 TDD

or e-mail: info@health.org

**SAMHSA**Substance Abuse and Mental
Health Services Administrationwww.samhsa.gov

This page was last updated on 23 March, 2001
SAMHSA is An Agency of the U.S. Department of Health & Human Services

Email Questions to info@samhsa.gov Click for Non-frames / text version of site
<http://www.samhsa.gov/grants/content/2001/pa-00-001.html>

7/25/01

SAMHSA RFP: Targeted Capacity Expansion Program

Program Goal: the goal of this program is to expand (or enhance) a communities ability to provide a comprehensive, integrated, creative, and community-based response to a targeted, well-documented substance abuse treatment capacity problem.

Availability of Funds: awards will range from \$100,00 to a maximum \$500,000.

Period of Support: support may be requested for a period of up to three (3) years.

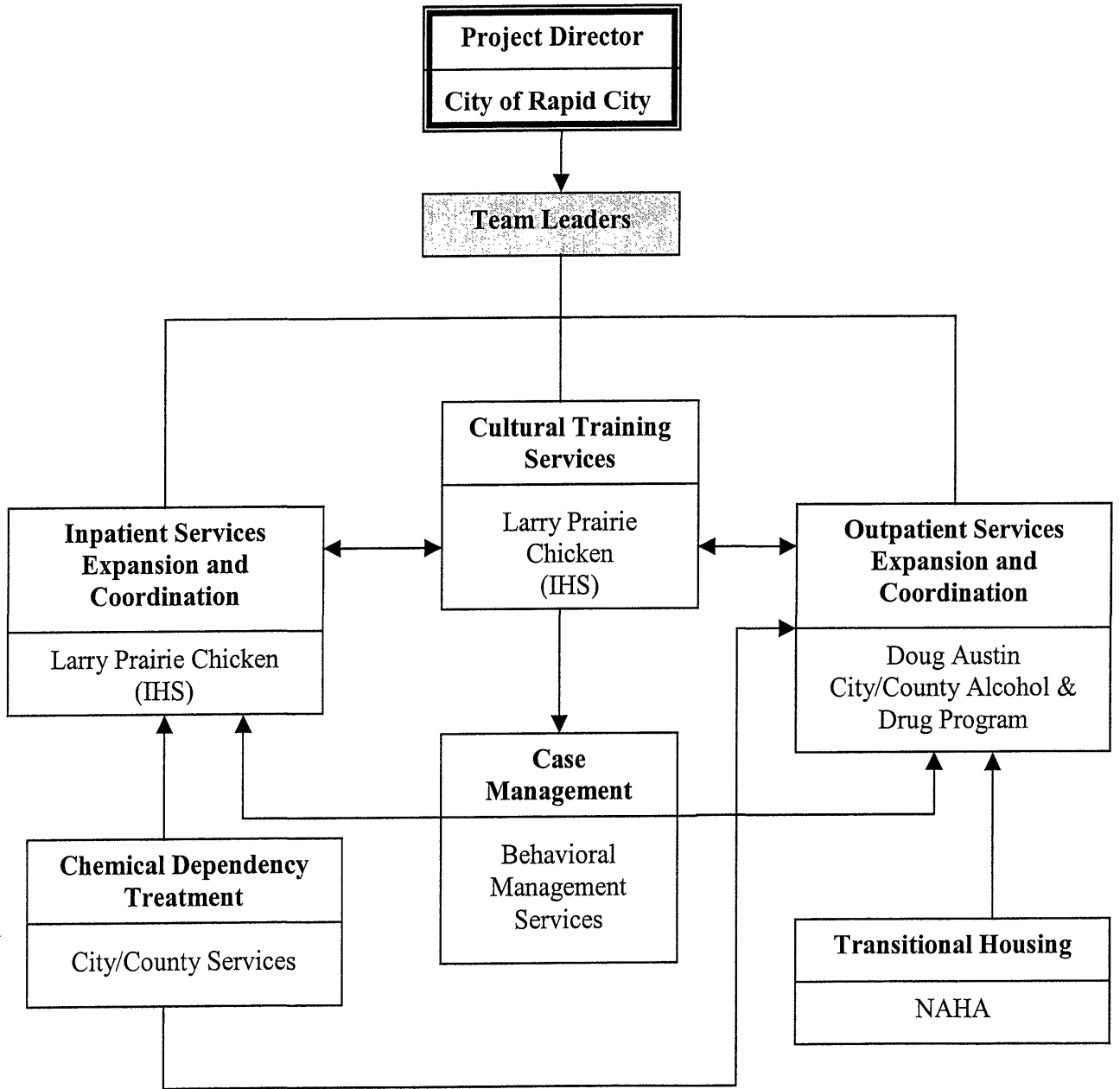
Target Population: Center of Substance Abuse Treatment CSAT has identified the target groups for this initiative as substance abusers and their families in need of substance abuse treatment as provided by residential, day, or outpatient programs.

CSAT has a substantial interest in funding projects that address a variety of concerns including, but not limited to:

- Outreach strategies to expand treatment services to under-served populations in geographic regions, such as rural and inner cities.
- Innovative practices directed at access and utilization for specific high-risk populations.
- Improvement of linkages and liaisons with other support services (e.g., outreach, transportation, child care, psychological services, housing, nutrition and diet, vocational programs, family assistance, family assistance, and legal services) to enhance client outcome or programs providing brief interventions.
- The implementation of of school-based (including colleges and universities) substance abuse screening and referral.
- The elderly and individuals with physical and emotional disabilities are often overlooked as populations with risk factors for substance abuse.

(NOTE: This is an abbreviated list, extracted from the RFP)

Organizational Structure:
Targeted Capacity Expansion Grant



Organizational Structure
Targeted Capacity Expansion Grant
Continuum of Care

Cultural training and Programs		
Case Management Services		
Inpatient	Outpatient	Transitional Housing
Chemical Dependency Treatment and Services		