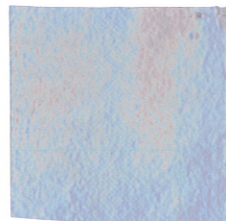


Exterior door & windows



Please review your proof to verify:

- Spelling
- Grammar
- Quantities
- Dimensions
- Colors (specify)
- Layout

If changes need to be made, please note on the proof and fax or e-mail back.

Production *will not* proceed until approved.

- APPROVED AS IS
- APPROVED WITH CHANGES
- UNAPPROVED - CHANGES NEEDED

Signature _____ Date _____

Copyright Notice ©
 This drawing and all reproductions thereof are the property of Unique Signs and may not be reproduced, published, changed or used in any way without written consent.

Customer: Canfield Business Interiors

Date: 8/4/14

Drawn by: DH

Scale: n.t.s.

Salesman: Dan Hop

Size: "h x "w

Overall Sq/Ft:

S P E C I F I C A T I O N S

Notes: Premium Vinyl graphics applied to glass, poly metal panel with vinyl logo, pipe stand-offs wit hex head mounting



118 Main St. Rapid City, SD 57701

605 343.4603 605 343.6699

Please review your proof to verify:

- Spelling
- Grammar
- Quantities
- Dimensions
- Colors (*specify*)
- Layout

If changes need to be made, please note on the proof and fax or e-mail back.

Production *will not* proceed until approved.

- APPROVED AS IS
- APPROVED WITH CHANGES
- UNAPPROVED - CHANGES NEEDED

Signature _____ Date _____



Exterior door & window

Copyright Notice ©
This drawing and all reproductions thereof are the property of Unique Signs and may not be reproduced, published, changed or used in any way without written consent.

Customer: Canfield Business Interiors

Date: 8/4/14

Drawn by: DH

Scale: n.t.s.

Salesman: Dan Hop

Size: "h x "w

Overall Sq/Ft:

S P E C I F I C A T I O N S

Notes: Premium Vinyl graphics applied to glass, poly metal panel with vinyl logo, pipe stand-offs wit hex head mounting



118 Main St. Rapid City, SD 57701

605 343.4603 605 343.6699