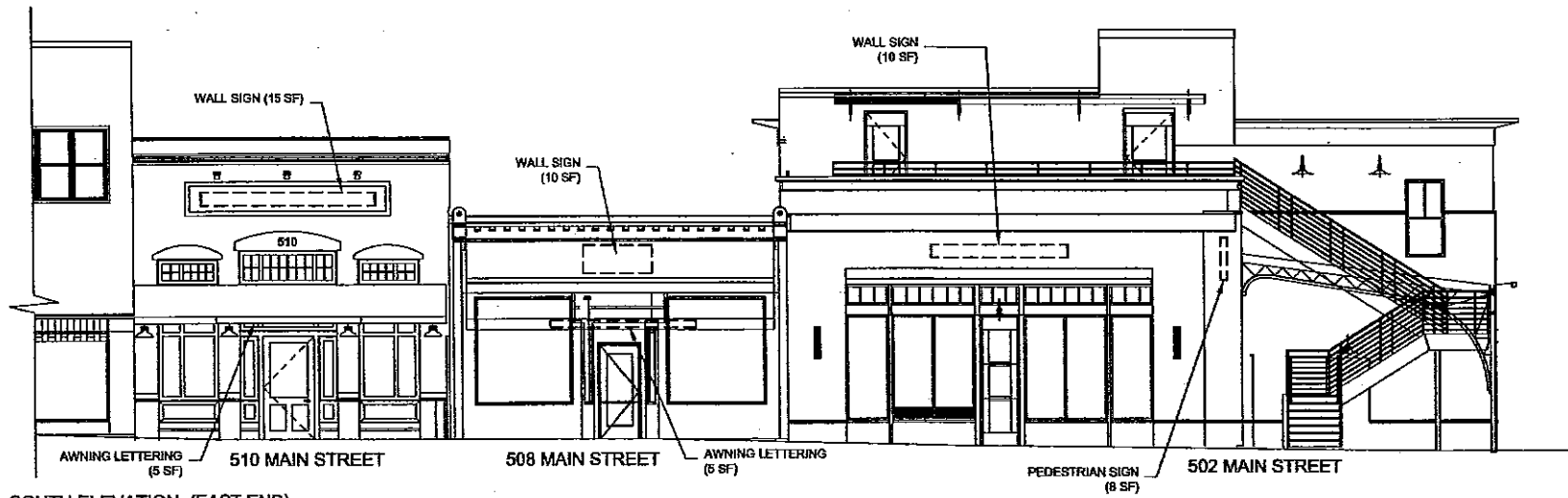
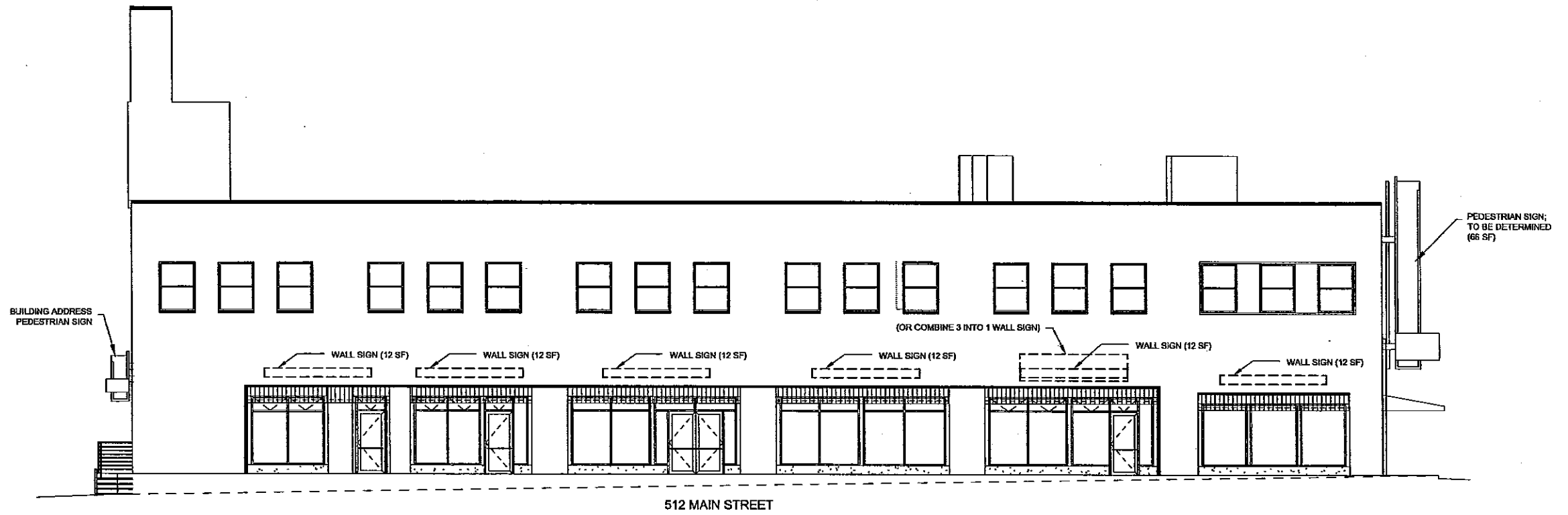


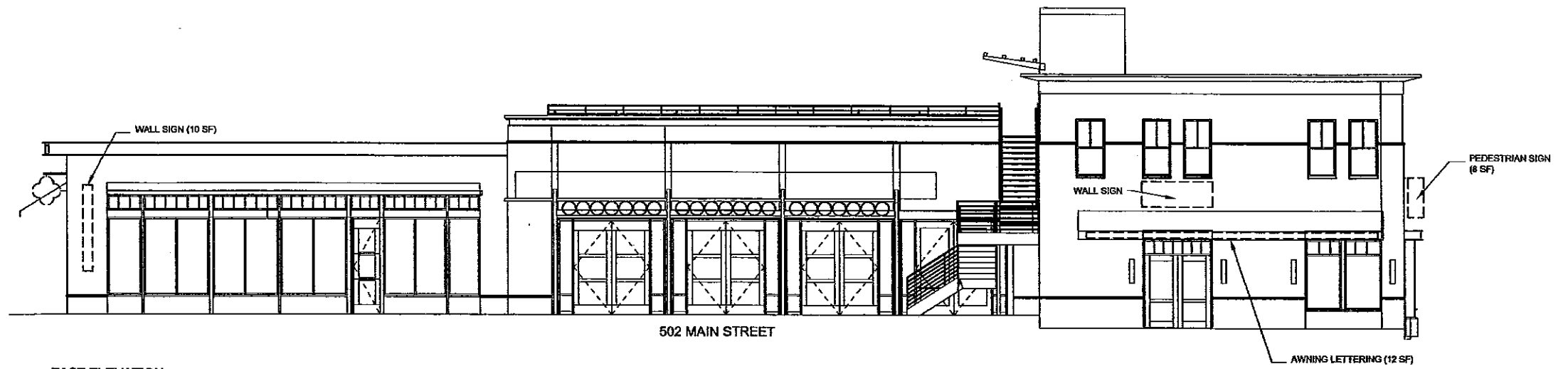
SOUTH ELEVATION (WEST END)
 3/32" = 1'-0"



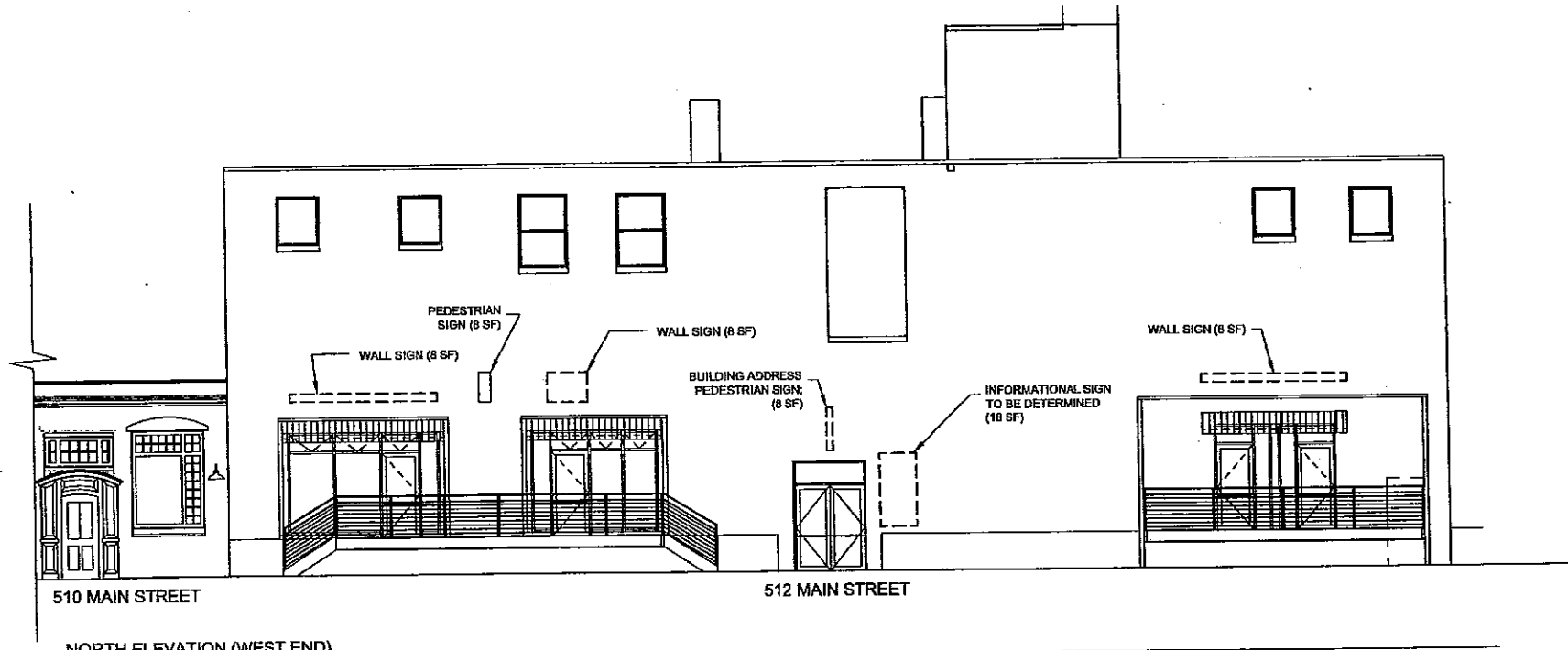
SOUTH ELEVATION (EAST END)
 3/32" = 1'-0"



WEST ELEVATION
 3/32" = 1'-0"



EAST ELEVATION
 3/32" = 1'-0"



NORTH ELEVATION (WEST END)

3/32" = 1'-0"



NORTH ELEVATION (EAST END)

3/32" = 1'-0"