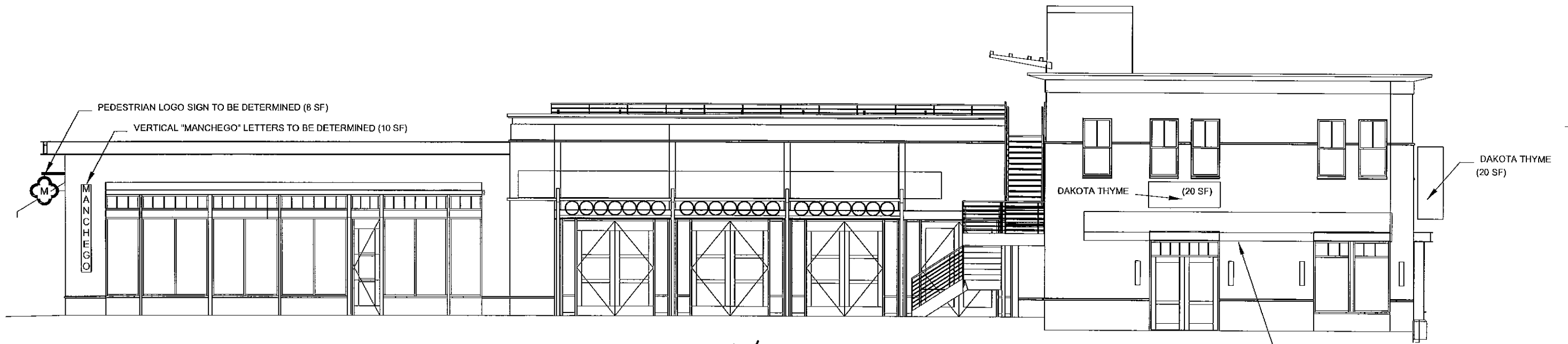




WEST ELEVATION

3/32" = 1'-0"

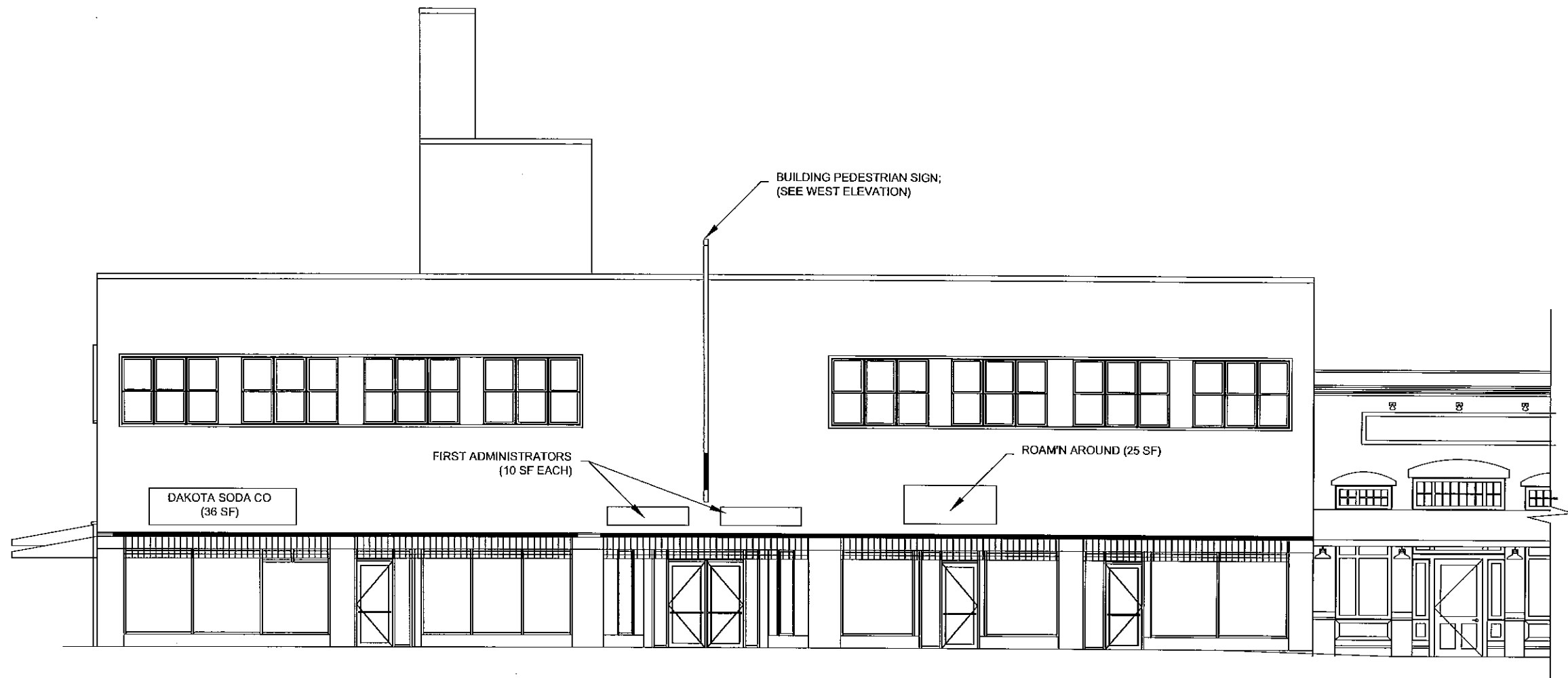


EAST ELEVATION

3/32" = 1'-0"

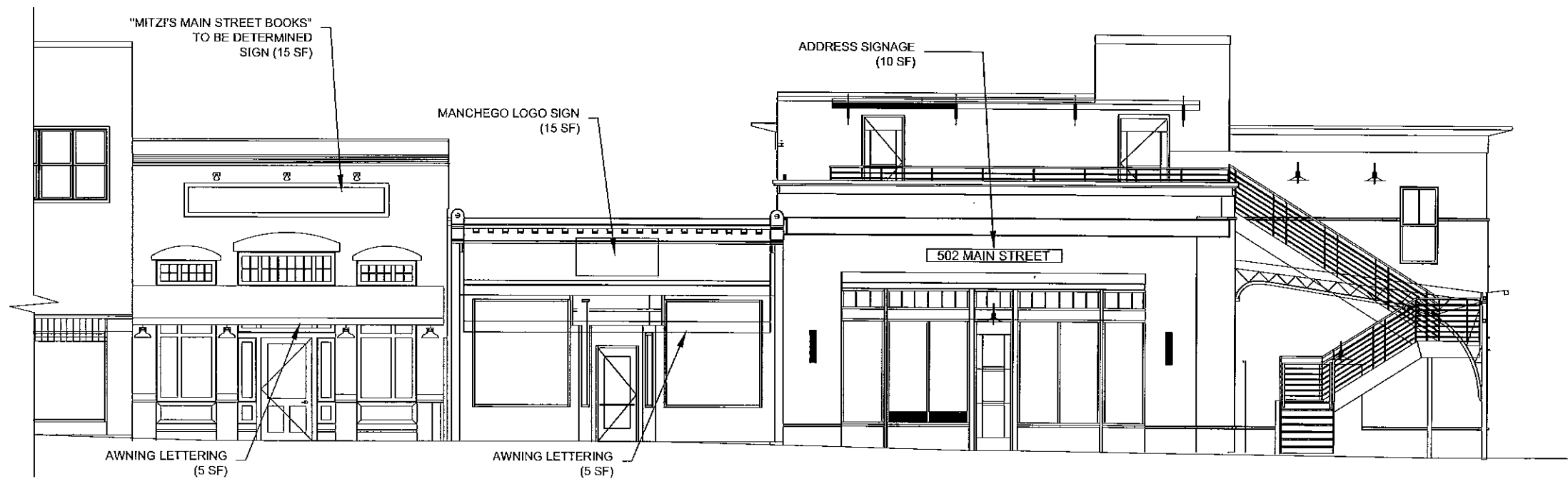
140'

6" LETTERS ON AWNING FASCIA (12 SF)



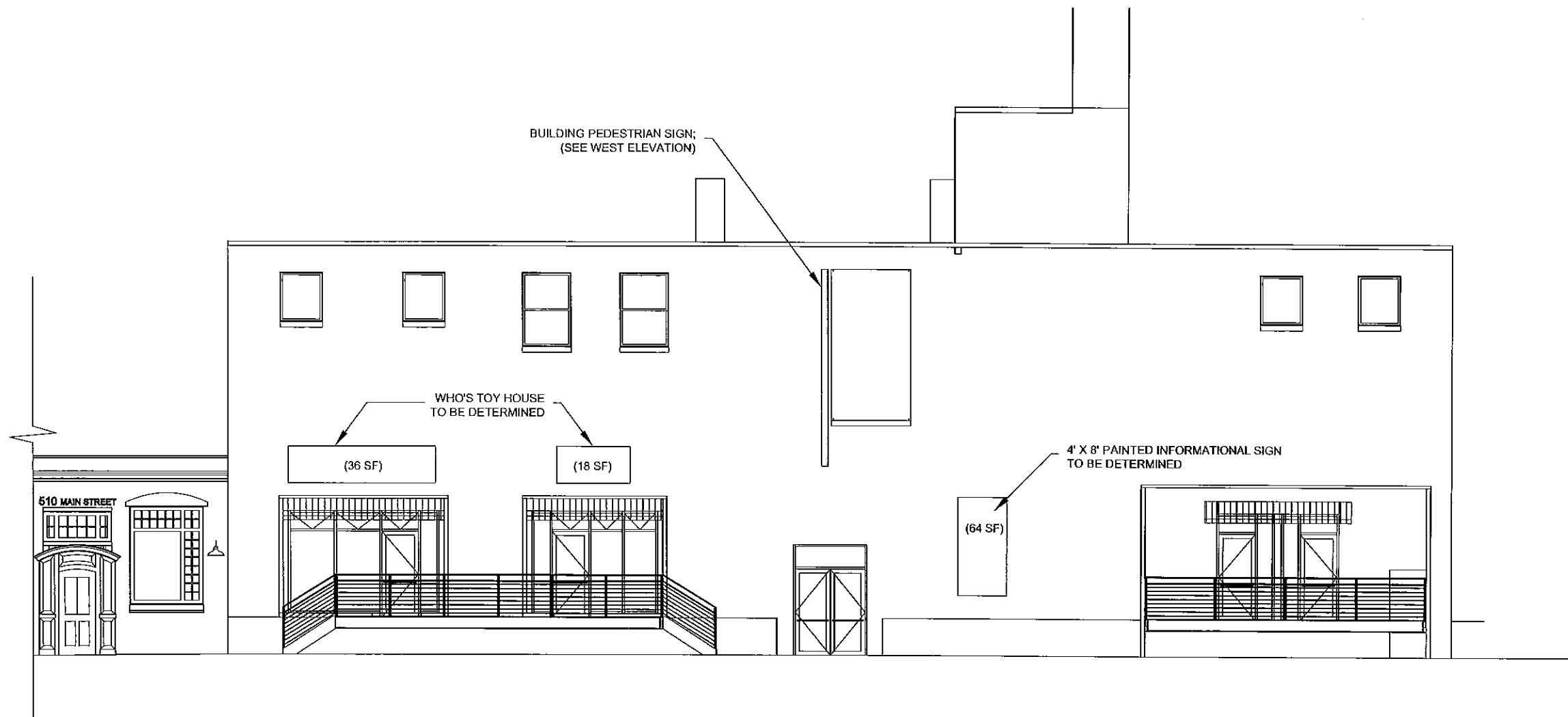
SOUTH ELEVATION (WEST END)

3/32" = 1'-0"



SOUTH ELEVATION (EAST END)

3/32" = 1'-0"



NORTH ELEVATION (WEST END)

3/32" = 1'-0"



NORTH ELEVATION (EAST END)

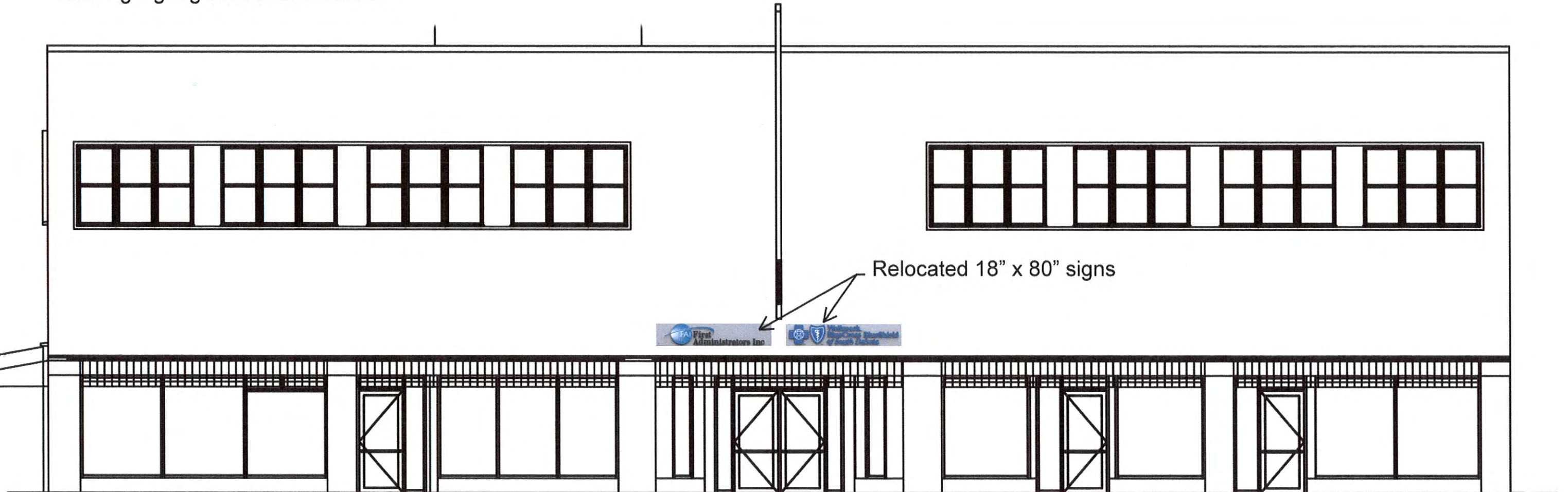
3/32" = 1'-0"

FIRST ADMINISTRATORS SIGN PROPOSAL

CHAMBERLIN ARCHITECTS



Existing signage in current location



Relocated 18" x 80" signs



Sign at existing location

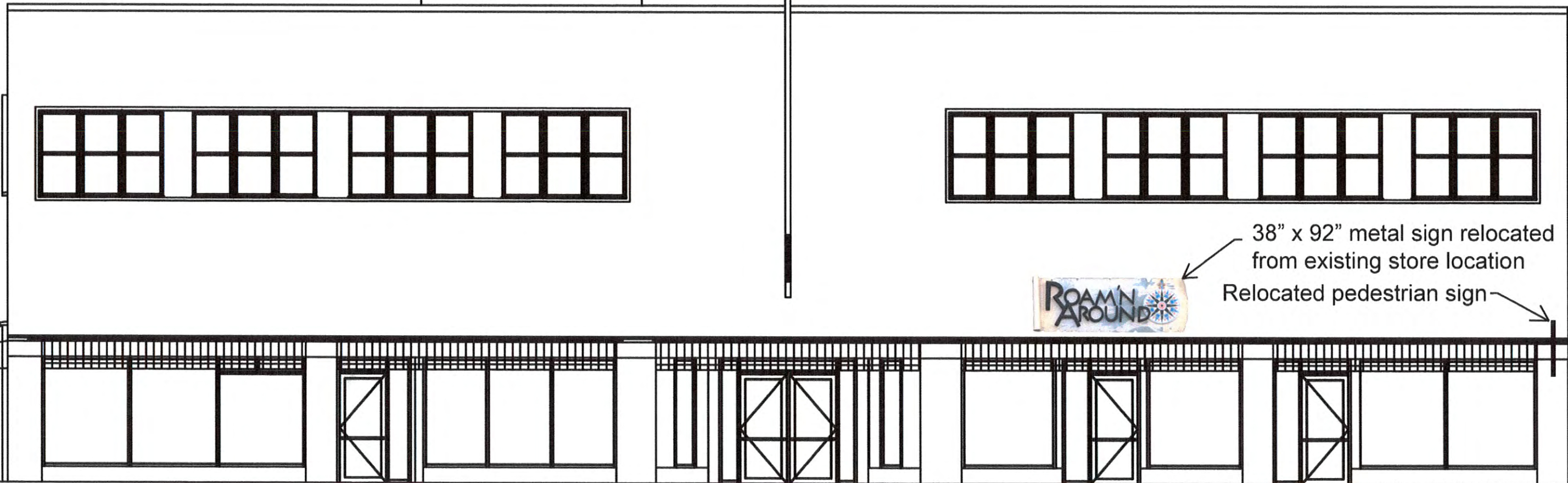


Pedestrian sign at existing location

ROAM'N AROUND SIGN PROPOSAL

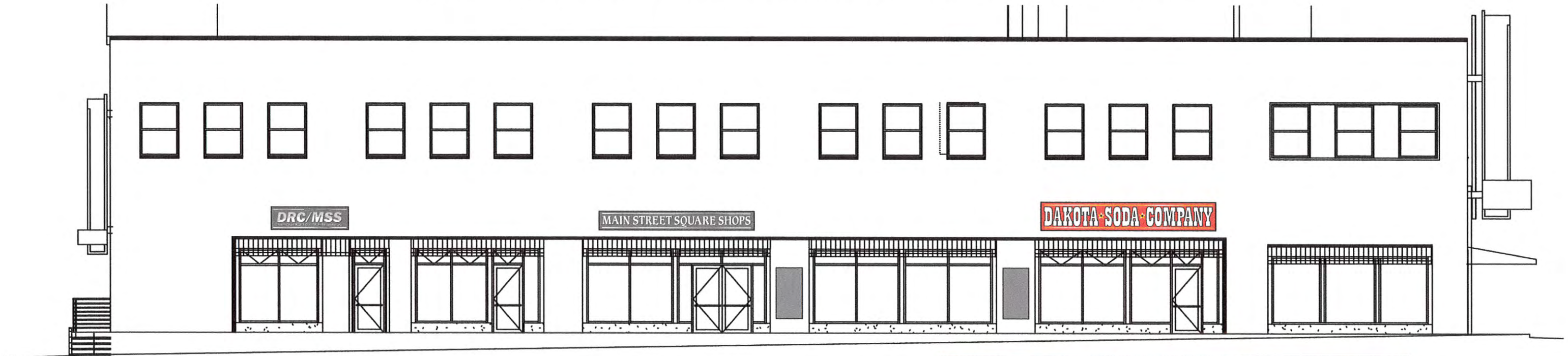
CHAMBERLIN ARCHITECTS

Window signage: 25% of window area



38" x 92" metal sign relocated from existing store location
Relocated pedestrian sign

Sign proposal for DRC/MSS, Main St. Square Shops & Dakota Soda



Sign dimensions

DRC/MSS—board 8' x 2.4' type "Offices" .892' x .229' "DRC/MSS" 6.688' x 1.043' "Destination..." 6.712' x .35'

Main Street Square Shops—board 16' x 2' type 15.215' x 1.149'

Dakota Soda Company—board 18' x 3' type 17.296' x 2.018'

Dakota Soda Company front sign—board 12' x 3' type "Food..." 8.403' x .393' "Dakota Soda Co." 11.362' x 1.386' "Est..." 3.431' x .243'

Menu boards and MSS shop directory— 2.5' x 5' to include listings of menu items and shops inside

Glass signage yet to come but to be within 25% of overall window glass

Contact Kenny Putnam with inquiries at 605-390-8804 or kenny.putnam@rap.midco.net

Sign proposal for Main Street Square building



West Signboard painted letters raised with gold leaf stripes and stars



Main Street side signboard painted letters raised with gold leaf stripes and stars

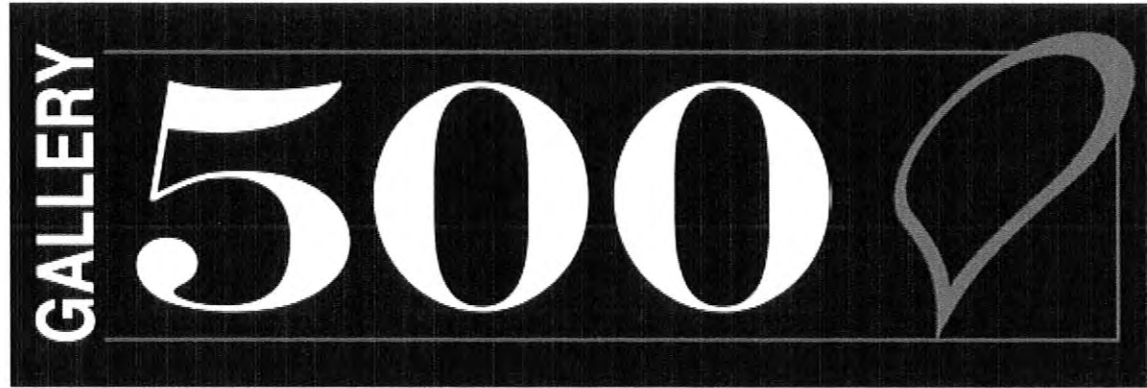
Sign dimensions

Dakota Soda Company—board 18' x 3' type 17.296' x 2.018'

Dakota Soda Company front sign—board 12' x 3' type "Food..." 8.403' x .393' "Dakota Soda Co." 11.362' x 1.386' "Est..." 3.431' x .243'

Contact Kenny Putnam at 605-390-8804

SIGN PROPOSAL for Gallery 500



Signboard: painted letters raised

Sign dimensions

Gallery 500 – board 18' x 3' - type Gallery: 6" x 2.33' / 500: 5.25' x 1.75'

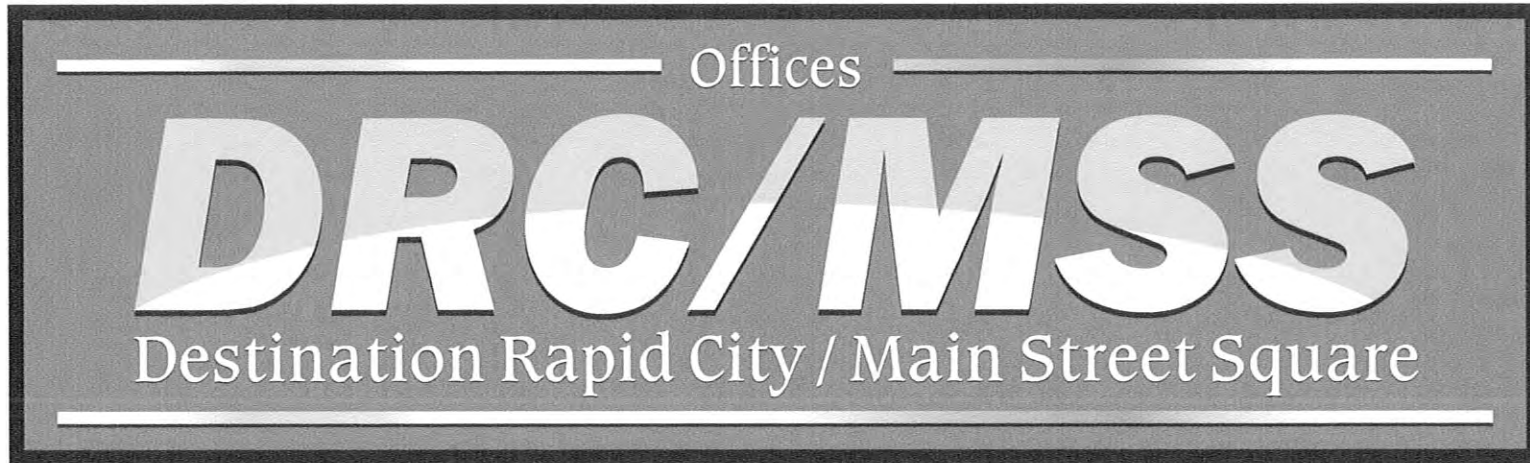
SIGN PROPOSAL for Gallery 500



Sign dimensions

Gallery 500 – board ~~18~~₁₀ x 3' - type Gallery: 6" x 2.33' / 500: 5.25' x 1.75'

Sign proposal for Main Street Square building



Option 1 Signboard painted with chrome stripes



Option 2 Aluminum board with painted letters and chrome stripes

Sign dimensions

DRC/MSS—board 8' x 2.4' type "Offices" .892' x .229' "DRC/MSS" 6.688' x 1.043' "Destination..." 6.712' x .35'
Contact Kenny Putnam at 605-390-8804



