

Hanzel Sarah

From: Dan Senftner <dan@destinationrapidcity.com>
Sent: Monday, January 12, 2015 8:27 AM
To: Hanzel Sarah
Subject: Re: No Adverse Effect to Replace Sliding Garage Door at 412 5th Street

Thank you.

Sent from my iPhone

On Jan 12, 2015, at 8:17 AM, Hanzel Sarah <Sarah.Hanzel@rcgov.org> wrote:

Hello Dan,

The SD SHPO has reviewed your proposal to replace a sliding steel door at 412 5th Street. They determined this project would not damage, destroy, or encroach upon historic property provided that the new door is white, matches the dimensions of the existing door (the opening will not be enlarged or downsized), and there are no windows. No further historic review is required. Please contact our Building Services Division to obtain any necessary building permits when you are ready to proceed with your project.

Sincerely,

Sarah Hanzel
Long Range Planner I
City of Rapid City
Community Planning & Development Services
Division of Long Range Planning
300 Sixth Street
Rapid City, SD 57701
605-394-4120
sarah.hanzel@rcgov.org

Hanzel Sarah

From: Nelson, Kate <Kate.Nelson@state.sd.us>
Sent: Monday, January 12, 2015 8:00 AM
To: Hanzel Sarah
Subject: RE: Rapid City - Determination of potential for adverse effect

Thanks, Sarah.

Provided that the new door is white, matches the dimensions of the existing door (the opening will not be enlarged or downsized), and there are no windows, then SHPO has determined this project would not damage, destroy, or encroach upon historic property, and our 11.1 review is closed.

Please let me know if you have any questions. Thanks!

Kate Nelson, Restoration Specialist
South Dakota State Historical Society
State Historic Preservation Office
900 Governors Drive
Pierre SD 57501-2217
(605) 773-6005
(605) 773-6041 (fax)
Kate.Nelson@state.sd.us

From: Hanzel Sarah [<mailto:Sarah.Hanzel@rcgov.org>]
Sent: Monday, January 12, 2015 8:42 AM
To: Nelson, Kate
Subject: RE: Rapid City - Determination of potential for adverse effect

Hi Kate,

The tenant brought in the product brochure for the Thermacore Door System 596 Series. However, they did mention that there would not be windows.. I revised the packet to include this information. Let me know if this is sufficient for photo documentation

Sarah

From: Nelson, Kate [<mailto:Kate.Nelson@state.sd.us>]
Sent: Monday, January 12, 2015 6:51 AM
To: Hanzel Sarah
Subject: RE: Rapid City - Determination of potential for adverse effect

Hi Sarah,

Yes, this is how the process works under regular 11.1 – just send us the notification form and we'll go from there!

As far as this project, can the Overhead Door folks email a photo that shows what the proposed door looks like? I looked on their website but wasn't able to find those specific product numbers.

And yes, this property was approved for a moratorium in December. They've really done a ton of work there!

Kate Nelson, Restoration Specialist
South Dakota State Historical Society
State Historic Preservation Office
900 Governors Drive
Pierre SD 57501-2217
(605) 773-6005
(605) 773-6041 (fax)
Kate.Nelson@state.sd.us

From: Hanzel Sarah [<mailto:Sarah.Hanzel@rcgov.org>]
Sent: Friday, January 09, 2015 9:53 AM
To: Nelson, Kate
Subject: Rapid City - Determination of potential for adverse effect

Kate,

The property managers at Aby's Feed and Seed (412 5th Street) would like to replace a poorly functioning sliding garage door with a roll-up garage door. Attached is a project review form with project details, an aerial photo and a photo of the existing door. I noted on the form that this property may be under consideration for the property tax moratorium, but I am not certain. Let me know if you have any questions or need more information. Thank you!

(This is a somewhat new process now that the MOU has expired, please let me know if you have any comments about how it's working)

Sarah Hanzel
Long Range Planner I
City of Rapid City
Community Planning & Development Services
Division of Long Range Planning
300 Sixth Street
Rapid City, SD 57701
605-394-4120
sarah.hanzel@rcgov.org

SDCL 1-19A-11.1 – Project Notification From

Local Government Entity Requesting Review

City of Rapid City

Contact Person for Government Entity

Name: Sarah Hanzel, Long Range Planner
Address: City of Rapid City, 300 Sixth Street, Rapid City, SD, 57701
Phone Number: 605-394-4120
Email: sarah.hanzel@rcgov.org

Project Location: 412 5th Street, Rapid City, SD

The property is

located in a listed historic district – Downtown Commercial District

Project Description:

The property owner /tenant requests a building permit to replace the existing sliding metal door (see photo) with a more functional and energy efficient modern overhead door.

The door is located on the south side of the grain mill building, inside the courtyard (see attached aerial image).

The requested door is a white, steel, roll-up insulated door with perimeter weather strip and no windows. The original opening of the garage door will not be altered.

***Note: This property may be under consideration for State Property Tax Moratorium.

Government Official's Signature: *Sarah Hanzel*

Date: 1/9/2015

Enclosures:

Aerial Map
Photographs
Other: quote from overhead door company



Legend

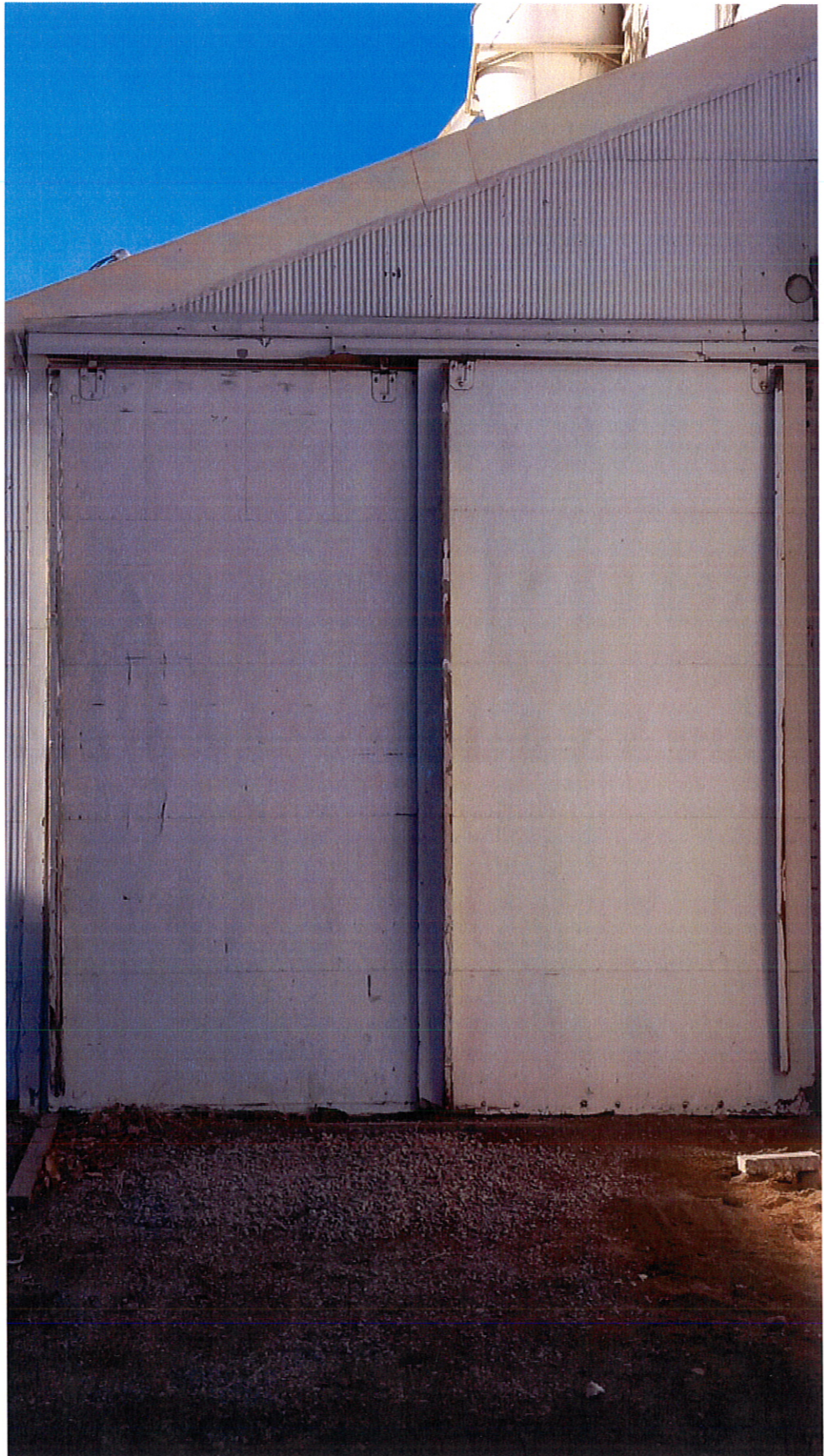
- Roads**
 - Interstate
 - US highway
 - SD highway
 - County highway
 - Main road
 - Minor arterial
 - Collector
 - Ramp
 - Paved road
 - Unpaved road
 - FS Highway
 - Driveway
 - Paved Alley
 - Unpaved Alley
 - Unimproved road
 - Trail
 - Airport Runway
 - Not yet coded
- Township/Section Lines**
 - 0
 - 7
- Tax Parcels**
- Lot Lines**
 - <Null>
 - Lot Line
 - Parcel Line
- County Line**
- Structure Type**
 - CONTRIBUTING BUILDING
 - CONTRIBUTING GARAGE
 - CONTRIBUTING SHED
 - NON-CONTRIBUTING BUILDING
 - NON-CONTRIBUTING GARAGE
 - NON-CONTRIBUTING SHED
 - NON-CONTRIBUTING STATUE
 - Historic Properties



Scale: 1: 778

Map Notes:

DISCLAIMER: This map is provided 'as is' without warranty of any representation to accuracy, timeliness, or completeness. The burden for determining accuracy, completeness, timeliness, merchantability, and fitness for or the appropriateness for use rests solely on the user. Rapid City and Pennington County make no warranties, express or implied, as to the use of the map. There are no implied warranties of merchantability or fitness for a particular purpose. The user acknowledges and accepts the limitations of the map, including the fact that the data used to create the map is dynamic and is in the constant state of maintenance, correction, and update. This documents does not represent a legal survey of the land. There are no restrictions on the distribution of printed Rapid City/Pennington County maps, other than the City of Rapid City copyright/credit notice must be legible on the print. The user agrees to recognize and honor in perpetuity the copyrights and other proprietary claims for the map(s) established or produced by the City of Rapid City or the vendors furnishing said items to the City of Rapid City.



PROPOSAL

DATE 11-26-14

PROJECT _____

Main St. Square

ARCHITECT _____

RC SP

TERMS _____

PHONE Gary Harding 381-2681

FAX _____

WE PROPOSE TO FURNISH THE FOLLOWING:

AMOUNT

Remove old sliding doors
Lower opening 12"
Install
1-11'11" x 10'9" 592 or 599 series white
steel insulated door
perimeter weather strip
inside lock

Total

~~3,100~~ 00

DATE INSTALLATION DESIRED _____

NET TOTAL

OPENINGS ARE TO BE PREPARED BY OTHERS IN ACCORDANCE WITH OUR SPECIFICATIONS.
THE ABOVE PRICE DOES NOT INCLUDE GLASS, GLAZING, PAINTING OR WIRING FOR ELECTRIC OPERATOR, UNLESS INCLUDED IN ABOVE PROPOSAL.
ABOVE PROPOSAL IS MADE FOR PROMPT ACCEPTANCE.
AGREEMENTS ARE CONTINGENT UPON STRIKES, ACCIDENTS OR OTHER CONDITIONS BEYOND OUR CONTROL.
WE CARRY MANUFACTURERS', CONTRACTORS', AND EMPLOYERS' LIABILITY AND WORKMAN'S COMPENSATION INSURANCE.

WE ACCEPT THE ABOVE PROPOSAL:

QUOTE GOOD FOR 30 DAYS

BY _____ DATE _____

OVERHEAD DOOR COMPANY OF RAPID CITY

P.O. Box 3507 • Rapid City, South Dakota 57709

(605) 343-8300 • FAX (605) 343-8158

ohdrapidcity@rushmore.com

by Mark





SERIES

596



INDUSTRY LEADING
COMMERCIAL & INDUSTRIAL SOLUTIONS



Standard Features At a Glance

Panel thickness	2" (51 mm)
R-value	17.40 (3.06 W/Msq)
U-value	.057 (.327 Msq/W)
Air infiltration:	
at 15 mph (24 kmph)	.08 cfm (2.26 Lpm)
at 25 mph (40 kmph)	.08 cfm (2.26 Lpm)
Thermal break	PVC
Exterior steel	20-gauge galvanized
Exterior surface	flush, textured
Standard springs	10,000 cycle
Sound transmission rating	Class 26
Std. maximum width	36'2" (11,024 mm)
Std. maximum height	24'1" (7,341 mm)
Exterior color	white
Interior color	white
Warranty	10-year delamination

Options

- Windload
- Thermal glazing
- Four-section pass door
- High-usage package
- Jamb weatherstrip
- Electric operator
- Chain hoist
- Posi-Tension drums
- Stop bottom fixture
- Bottom sensing edge
- Rubber header seal
- Aluminum sash section available to 24'2" (7366 mm) wide
- Tumbler keyed lock
- Exhaust ports

Exceptional Thermal Efficiency and Superior Sound Suppression

The Thermacore® 596 Series features an R-value of 17.40 (3.06 W/Msq), a U-value of .057 (.327 Msq/W), and one of the best overall air infiltration ratings in the industry – as well as a Class 26 sound transmission rating. Ideal for extra heavy-duty applications where both thermal efficiency and sound suppression are desirable, this 2" (51 mm) thick door is available in standard sizes up to 36'2" (11,024 mm) wide and 24'1" high (7,341 mm).

The 596 Series incorporates Thermacore's® steel-polyurethane-steel panel construction, which provides a thermal barrier to withstand harsh climates and demanding environmental requirements. The result is a solid, well-built door that keeps both the weather and unwanted sound at bay.

Built With the Best Technology in the Business.

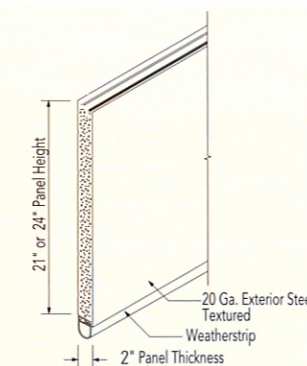
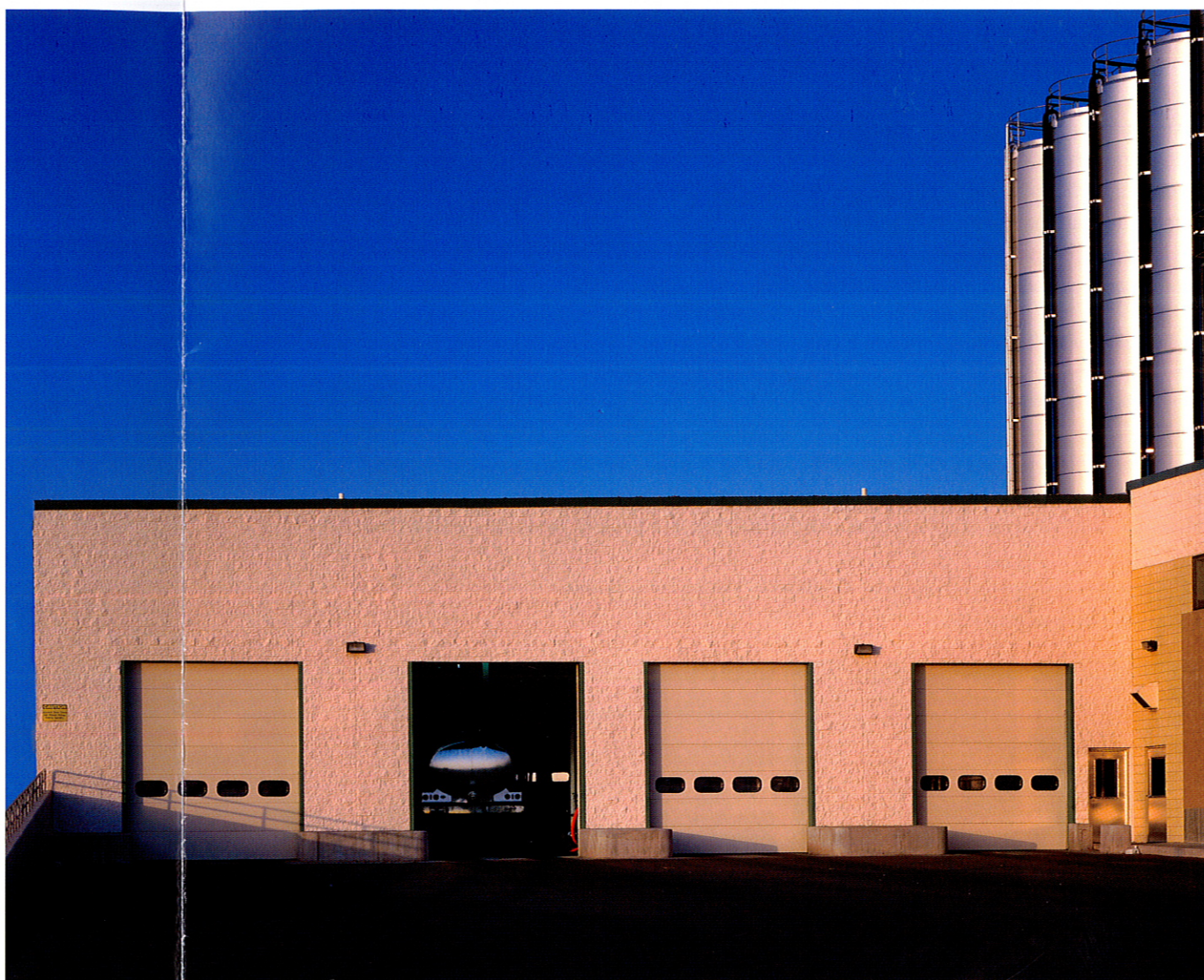
The 596 Series is manufactured using Overhead Door Corporation's proprietary, computer-controlled fabrication process. This advanced technology ensures adherence to the industry's strictest product tolerances and results in an exceptionally well-built door for outstanding thermal efficiency and long-lasting performance.

Highly Engineered for High Thermal Efficiency.

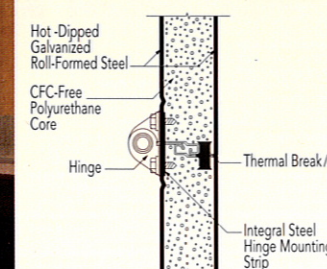
Thermacore's® CFC-free, fully encapsulated, foamed-in place panel maintains R-value performance year round — and year in and year out. Thermal breaks between internal and external skins, rubber joint seals and tight-fitting, heavy-duty fixtures minimize air infiltration and provides one of the highest thermal efficiency ratings in the industry in its class.

Strong, Lightweight, Attractive and Durable.

Thermacore® 596 doors feature 20-gauge, roll-formed, hot-dipped galvanized steel exterior panels for exceptional strength and sound suppression capabilities. Windload



Thermacore's® steel-polyurethane-steel sandwich panel construction is lightweight, incredibly strong and exceptionally efficient reflecting a level of thermal performance that is available only in Overhead Door Corporation's Thermacore® line.



Installation and Service: Overhead Door Company of Twin Falls

design available for usage in high-wind conditions. Two coats of white baked-on, polyester paint on a flush, textured exterior surface provide a handsome finish that will last for years. Our industry-leading 10-year limited warranty against delamination means that we'll stand behind the quality of our doors at the outset and for the long haul.

Superior Field Serviceability.

Thermacore's® special internal construction allows hinges to be placed anywhere along the panel's length permitting customization on the job site — for fast and precise installation, repair or retrofit.

Many Options, Better Solutions.

The Thermacore® 596 is available in sizes up to 36'2" (11,024 mm) wide and 24'1" (7,341 mm) high. A full line of electric operators ensures precise and trouble-free motor operation in a variety of mounting options (side, center or trolley). Available options include aluminum sash section up to 24'2" (7,366 mm) widths, thermal glazing, pedestrian pass door, and jamb weatherstripping. An optional high-usage package expands the 596's versatility to high-cycle conditions, with torsion springs in 25k, 50k, 75k or 100k cycles, a solid-steel shaft to reduce fatigue and deflection, and a heavy-duty 3" (76 mm) steel track for added durability.

The Original, Innovative Choice for Unequaled Quality and Service

Overhead Door Corporation pioneered the upward-acting door industry, inventing the first upward-acting door in 1921 and the first electric door operator in 1926. Today, we continue to be the industry leader through the strength of our product innovation, superior craftsmanship and outstanding customer support, underscoring a legacy of quality, expertise and integrity. That's why design and construction professionals specify Overhead Door Corporation products more often than any other brand.

The red Overhead Door Ribbon is a mark of quality that also reflects the pride we take in the people who support our products. Our family of over 450 Ribbon Distributors across the country not only share our name and logo, but also our commitment to excellence. Your Ribbon Distributor will work with you in a consultative role to ensure that product selections achieve your design and application requirements — in addition to providing expert installation, professional field service and ongoing maintenance. From project design and manufacturing to installation and service, the Overhead Door Ribbon is your guarantee of genuine quality and turnkey service excellence.

Together with our Ribbon Distributors, we offer comprehensive technical information and resource materials to support your project, including:

- Architectural Design Manual – a comprehensive guide to selecting, specifying and detailing all commercial and industrial Overhead Door products
- Sweet's Catalog for selection information about our products, and Sweet's CD and CD-CAD for convenient electronic product information, technical specifications, and details with CAD "cut-and-paste" capability
- Operation & Maintenance Manual – detailed product information, customized for your project, to ensure reliable, long-life door system operation
- Custom design and technical assistance through our Corporate Application Engineering Teams
- Visit our Architect's Corner at www.OverheadDoor.com



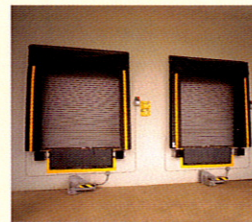
Advanced Rolling Steel Door
RapidSlat®



Thermacore® Sectional Doors



Rolling & Side Folding
Security Grilles & Closures



Rolling Service Doors



Commercial Operators

Today, Overhead Door Corporation—along with our Horton Automatics division, for automated pedestrian entrances—is recognized as the leading, single-source manufacturer of integrated door and operator systems for commercial, industrial and residential applications. With multiple manufacturing locations throughout the United States, a state-of-the-art TREQ (Testing, Reliability, Engineering, and Quality) Center for design and engineering, and a national network of authorized Ribbon Distributors, our capabilities are leading-edge and our field service and technical support second to none. Built best and backed best, Overhead Door is the industry's leading choice for quality that shows and lasts.

To talk with the Overhead Door distributor nearest you, call 1-800-929-DOOR.

Overhead Door Corporation
2501 S. State Hwy. 121 Bus., Suite 200
Lewisville, Texas 75067
1-800-929-DOOR

www.OverheadDoor.com
©2010 Overhead Door Corporation
C900-096 2M 8/10 JAR



INDUSTRY LEADING
COMMERCIAL & INDUSTRIAL SOLUTIONS

The Overhead Door Corporation family of quality commercial and industrial products includes:



A part of Sanwa Shutter Corporation

Consistent with our policy of continuing product improvement, we reserve the right to change product specifications without notice or obligation

**OVERHEAD DOOR CO.
OF RAPID CITY**
P.O. Box 3507 3110 S. Hwy. 79
Rapid City, SD 57709
(605) 343-8300