



PRODUCT DESCRIPTION

The **PremiumCoat® System** is a liquid-applied, water-based sustainable roofing and waterproofing solution for coating, recover, reroof and new roof applications. It provides a fully-adhered, adhesively attached, breathable acrylic membrane and a complete roof cover.

WARRANTY

Properly installed and inspected, the **PremiumCoat® System** qualifies for 15-year Standard warranties and 15-, 20-, and 25-year System warranties which, under proper maintenance and recoat schedules, can be extended for the life of the building.

PACKAGING & SHELF LIFE

The **PremiumCoat® System** is comprised of the following components: **PremiumCoat® FoundationCoat**, **PremiumCoat® Fabric**, and **PremiumCoat® FinishCoat**.

For packaging information, please refer to individual product Technical Data Sheets.

BASIC USES & ADVANTAGES

Basic Uses:

- Metal (historic or commercial) roof waterproofing and cooling
- Flat and low-pitched roof waterproofing, including BUR, concrete (structural or LW), EPDM, Hypalon, modified bitumen, PVC, and TPO
- Parapet wall waterproofing
- Exterior wall waterproofing
- Flashing of all types

The acrylic membrane forms a permanently flexible, highly U.V. resistant chemical resistant elastomeric compound. It is fully reinforced with a tough stitch-bonded polyester fabric which has been designed for roofing and flashing applications of all types.

PremiumCoat® is easy to apply, safe to work with, and requires no special equipment.

Advantages:

- **PremiumCoat®** is a Factory Mutual 4470 Class 1 Liquid Applied Roof Cover and meets all aspects of the International Building Code criteria as roof cover for the IBC, as well as the IgCC, and the IECC
- Uses only quality materials as certified by ASTM and ISO standards and is manufactured in QCP's ISO 9001:2008 certified factories.
- Quality assurance is further supported by regional technical field representatives, field inspections, and certified applicator training
- Ultraviolet and heat-resistant for added durability
- Highly reflective FinishCoat layers reduce heat and lower energy costs
- Excellent adhesion holds substrate in place even in hurricane force winds

HYDROSTOP

PHYSICAL PROPERTIES

PREMIUMCOAT® SYSTEM	
Wind Driven Rain	Pass 0.0 lbs weight gain [TT-C-555B/D6904]
Elongation of Membrane (40 mils DFT)	MD: 36% @ 8,000 hrs weathering CD: 41% @ 8,000 hrs weathering [ASTM D4798 (G155) and D2370]
Tensile Strength of Membrane (40 mils DFT)	MD: 65lbs/in-width @ 8,000 hrs weathering, CD: 69lbs/in-width @ 8,000 hrs weathering [ASTM D4798 (G155) and D2370]
Tensile Strength of Membrane (40 mils DFT)	2210 PSI (13,789 kPa) [ASTM D412]
Water Vapor Permeability (40 mils DFT)	3-5 perms A Class III vapor retarder [ASTM E96]
Salt Spray	No effects [ASTM B117]
Algae Resistance	Orating [ASTM G29]
Drying Time	(Touch dry) 1-4 hours at 77°F @ 40% RH
Full Cure	7 days
Solar Reflectance	(white) 79% initial, 70% aged
Thermal Emittance	(white) 0.90 initial, 0.90 aged
SRI	(white) 99 initial, 86 aged
Exterior Fire	Class A up to 4"/12" slope [ASTM E108/UL790]
Interior Fire	Class 1 [FM 4470 Calorimeter]
Wind Uplift	Concrete: 6,089 psf LWIC: 4,621 psf Polyisocyanurate (ISO): 1,189 psf Smooth BUR: 2,261 psf Granulated Cap Sheet: 1,753 psf [FM 4470/4474, TAS 114 D/J, TAS 125]
Impact/Durability	Pass [FM 4470 Foot Traffic]
Leakage	Pass a free-standing membrane [FM 4470 ASTM D7281]
Hail	Pass - Severe [FM 4470 Hail]
Weathering (40 mils DFT)	Pass, maintained over 90% tensile strength after 8,000 hours Xenon-Acr. [ASTM D4798 (G155), D2370]
Typical Service Limits	-30°F to 200°F (-37°C to 93°C)
ASTM Material Properties	Pass [ASTM D6083]
Cured Weight	0.33 lbs per ft² (56.8 ounces per m²)

For specific physical property information on PremiumCoat® FoundationCoat, Fabric, and FinishCoat components, please refer to individual product Technical Data Sheets.

PremiumCoat® System

Technical Data Sheet



Page 2 of 2

APPROVALS

ASTM D-6083	Tested and approved
California Title 24	PremiumCoat® System meets all Title 24 requirements
CRRC (Cool Roof Rating Council) coolroofs.org	PremiumCoat® FinishCoat White Initial Solar Reflectance 0.79 Initial Thermal Emittance 0.90 Initial SRI 99 Product ID 0614-0039
	PremiumCoat® FinishCoat Cotton Initial Solar Reflectance 0.71 Initial Thermal Emittance 0.90 Initial SRI 87 Product ID 0614-0040
	PremiumCoat® FinishCoat High Reflectant Plus Bright White Initial Solar Reflectance 0.92 Initial Thermal Emittance 0.86 Initial SRI 117 Product ID 0614-0042
Department of Energy, ENERGY STAR®	Approved: PremiumCoat® FinishCoat white & cotton
Factory Mutual FM4470 / 4474	Class 1 Roof Cover and Recover System over most roofing substrates. Standard for Class 1 Spread of Flame, Windstorm Pressure, Windstorm Pull, Hail Damage, Resistance to Foot Traffic, and Susceptibility to Leakage Classifications. Report J.I. 3000150 various assemblies.
Florida Dept of Codes floridabuilding.org	Acceptance # - FL6623-R1
GSA (U.S. General Services Admin)	Contract Number GS-07F-5988R Special Item Number- 563-4
Miami-Dade County NOAs miamidade.gov	10-0720.04, 11-0531.07 13-0204.15, 13-0204.16 13-0204.17, 13-0204.18
OTC (Ozone Transport Commission)	PremiumCoat® meets and exceeds the requirements for the OTC.

APPLICATION INSTRUCTIONS

Refer to QCP PremiumCoat® System specifications regarding surface preparation, cleaning, priming instructions, application information, coverage rates, and minimum membrane mil thickness required.

SUBSTRATE	SURFACE PREPARATION / PRIMING					
	BarrierGuard Slurry	CleanAct Primer	SP Primer	StableRust Primer	SureBond Primer	UniBase Primer
BUR						X
Concrete, structural	X				X	
Concrete, LW	X				X	
EPDM		X				
Hypalon						
ISO Board						
Metal				X		
APP Mod Bit						X
SBS Mod Bit						X
PVC			X			
Cover Board						
TPO			X			

General Coverage Rate & Application Information:
PremiumCoat® FoundationCoat & Fabric components: this procedure consists of one coat of **PremiumCoat® FoundationCoat ("FoundationCoat")** applied to the substrate at the rate of 50 to 80 ft²/gallon (1.2 to 2 m²/liter), **PremiumCoat® Fabric ("Fabric")** (sizes vary) laid into the wet **FoundationCoat**, and a second coat of **FoundationCoat** immediately applied over the top at the rate of 50 to 80 ft²/gallon (1.2 to 2.0 m²/liter) to saturate the **Fabric**. **FoundationCoat** is applied at a total rate of 25 to 40 ft²/gallon (.6 to 1.0 m²/liter), depending on the texture and porosity of the substrate. **FoundationCoat** should only be

applied using approved roof brushes. Rolling and/or spraying **FoundationCoat** is strictly prohibited.

Apply specified number of coats of **PremiumCoat® FinishCoat ("FinishCoat")** by brush, roller, or airless sprayer. Each **FinishCoat** shall be applied at 120-140 ft²/gal (2.95-3.43 m²/liter). Minimum milage requirements are 11.5-13.4 (292-340 microns) wet and 6.1-7.2 mils (154-182 microns) dry per coat. Allow to dry between coats. Total **FinishCoat** dry film thickness should be 12.2-14.4 mils (309-365 microns). See **PremiumCoat® System** specification for finished membrane mil thickness values.

LIMITATIONS & PRECAUTIONS

PremiumCoat® System liquid components will freeze and become unusable below 32°F (0°C). Do not ship or store unless protection from freezing is available. Do not apply if conditions will not permit complete cure before

rain, dew or freezing temperatures occur. Do not apply **PremiumCoat® System** at temperatures below 50°F (10°C), or when there is a possibility of temperatures falling below 32°F (0°C) within 2 hours of application.

SAFETY & HANDLING

For specific information regarding safe handling of this material, please refer to the Material Safety Data Sheet (MSDS).

CLEAN UP

Thoroughly rinse application equipment with clean water.

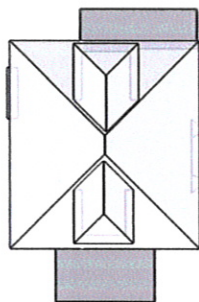
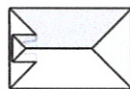


Quest Construction Products

1465 Pipefitter Street
 N Charleston, SC 29405
 855-817-3082
 www.quest-cp.com

Our products are guaranteed to meet established quality control standards, information contained in our technical data is based on laboratory and field testing, but is subject to change without prior notice. No guarantee of accuracy are given or implied, nor does Quest Construction Products assume any responsibility for coverage, performance on injuries resulting from storage, handling or use of our products. Liability, if any, is limited to product replacement or, if applicable, to the terms stated within the executed project warranty.

926 Quincy St, Rapid City, SD 57701-2608



In this 3D model, facets appear as semi-transparent to reveal overhangs.

Report Details

Report:9196028

Roof Details

Total Roof Area =2,594 sq ft
 Total Roof Facets =21
 Predominant Pitch =8/12
 Number of Stories <=1
 Total Ridges/Hips =237 ft
 Total Valleys =36 ft
 Total Rakes =5 ft
 Total Eaves =386 ft

Report Contents

Images.1
 Length Diagram.....4
 Pitch Diagram.....5
 Area Diagram.6
 Notes Diagram7
 Report Summary8
 Additional Property Information10

Contact: Sam Chandler
 Company: Weather-Tite Exteriors,LLC
 Address: 2605 Commerce Rd
 Rapid City SD 57702
 Phone: 605-939-0208

Measurements provided by www.eagleview.com

**Certified Accurate**

www.eagleview.com/Guarantee.aspx

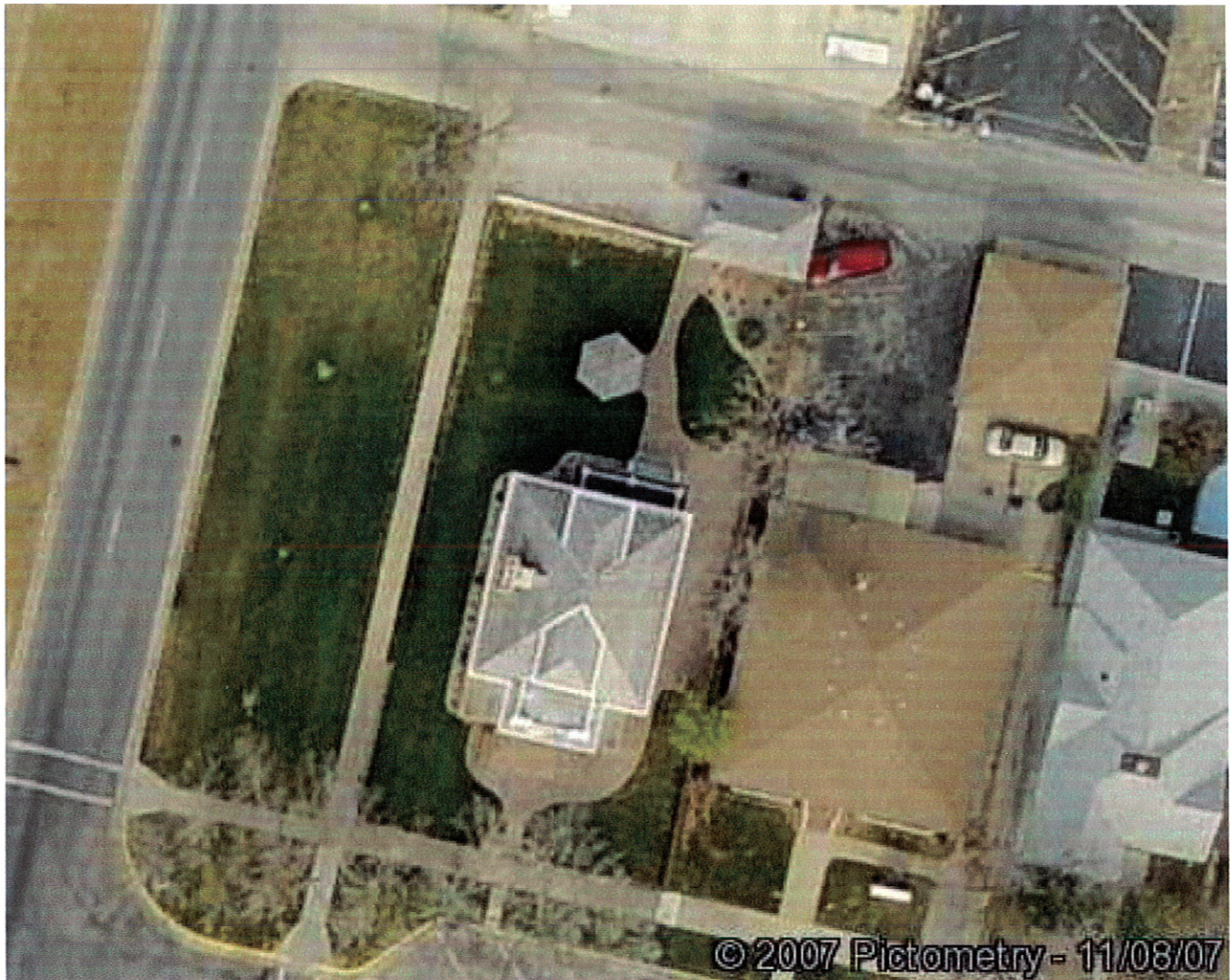
This document is provided under License by EagleView Technologies to the requestor for their Internal Use Only subject to the terms and conditions previously agreed to by the requestor when they registered for use of EagleView Technologies Services.

It remains the property of EagleView Technologies and may be reproduced and distributed only within the requestor's company. Any reproduction or distribution to anyone outside of the requestor's company without EagleView's prior written permission is strictly prohibited. All aspects and handling of this report are subject to the Terms and Conditions previously agreed to by the requestor.

Images

The following aerial images show different angles of this structure for your reference.

Top View



Report: 9196028

This document is provided under License by EagleView Technologies to the requestor for their Internal Use Only subject to the terms and conditions previously agreed to by the requestor when they registered for use of EagleView Technologies Services. It remains the property of EagleView Technologies and may be reproduced and distributed only within the requestor's company. Any reproduction or distribution to anyone outside of the requestor's company without EagleView's prior written permission is strictly prohibited. All aspects and handling of this report are subject to the Terms and Conditions previously agreed to by the requestor.

North Side



South Side



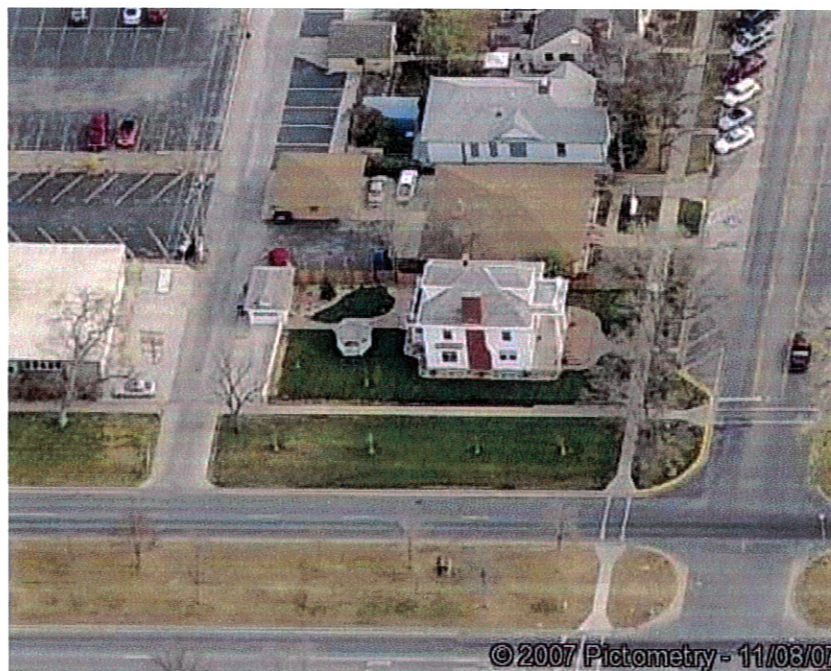
Report: 9196028

This document is provided under License by EagleView Technologies to the requestor for their Internal Use Only subject to the terms and conditions previously agreed to by the requestor when they registered for use of EagleView Technologies Services. It remains the property of EagleView Technologies and may be reproduced and distributed only within the requestor's company. Any reproduction or distribution to anyone outside of the requestor's company without EagleView's prior written permission is strictly prohibited. All aspects and handling of this report are subject to the Terms and Conditions previously agreed to by the requestor.

East Side



West Side



Report: 9196028

This document is provided under License by EagleView Technologies to the requestor for their Internal Use Only subject to the terms and conditions previously agreed to by the requestor when they registered for use of EagleView Technologies Services. It remains the property of EagleView Technologies and may be reproduced and distributed only within the requestor's company. Any reproduction or distribution to anyone outside of the requestor's company without EagleView's prior written permission is strictly prohibited. All aspects and handling of this report are subject to the Terms and Conditions previously agreed to by the requestor.