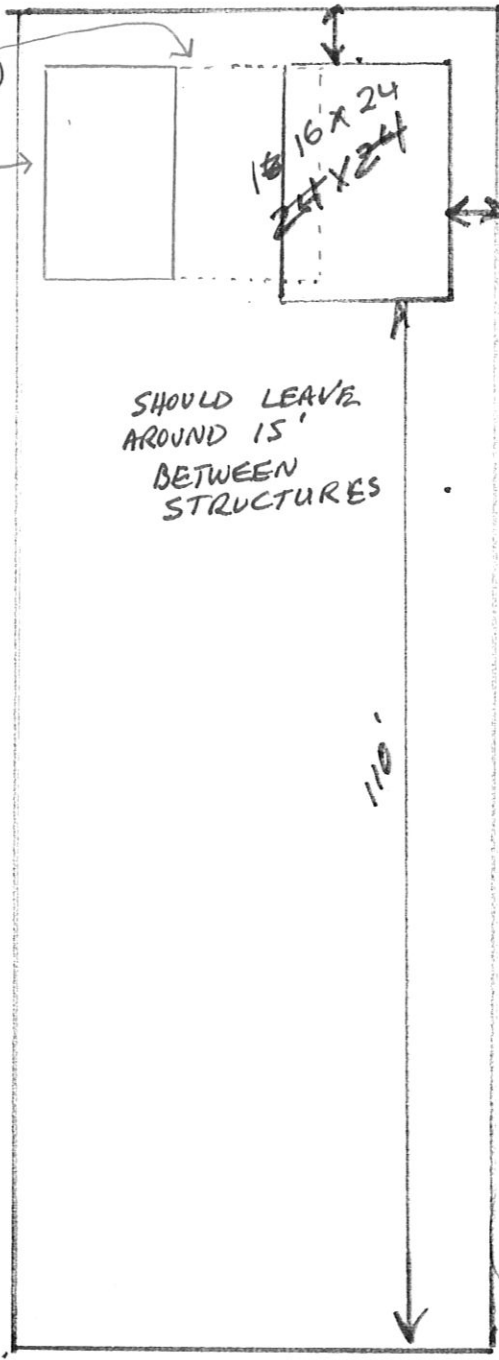


Alley 5'

CARPORT
(TO BE
REMOVED)
PRESENT
GARAGE



140

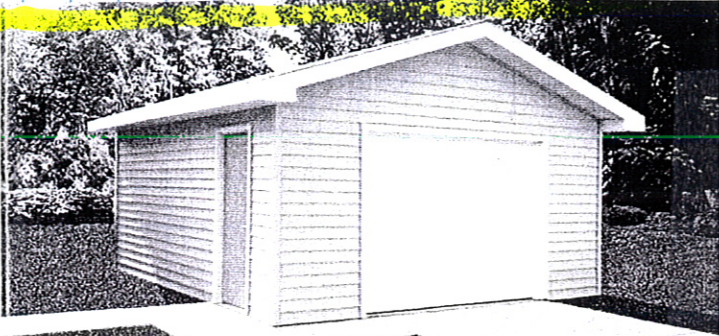
110'

H =
900 / G
884

7000
1784 25%

50

South

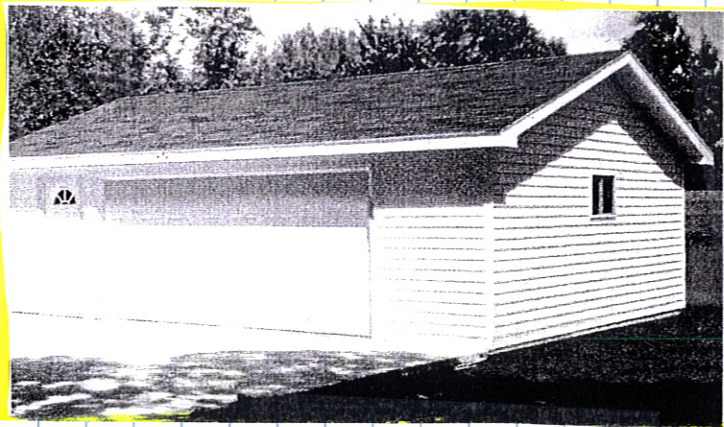


16'W x 24'L x 8'H 195-0939

- One 9' x 7' steel raised panel overhead garage door
- One pre-hung steel entry door
- 25 year Supreme® shingles
- Double 4" vinyl siding
- 24" overhang on all four sides
- Aluminum soffit and fascia

THE FRONT OF THE
NEW STRUCTURE WILL
MATCH THE PRESENT
GARAGE'S DISTANCE FROM
THE ALLEY.

THIS SIZE



THIS ROOF TYPE