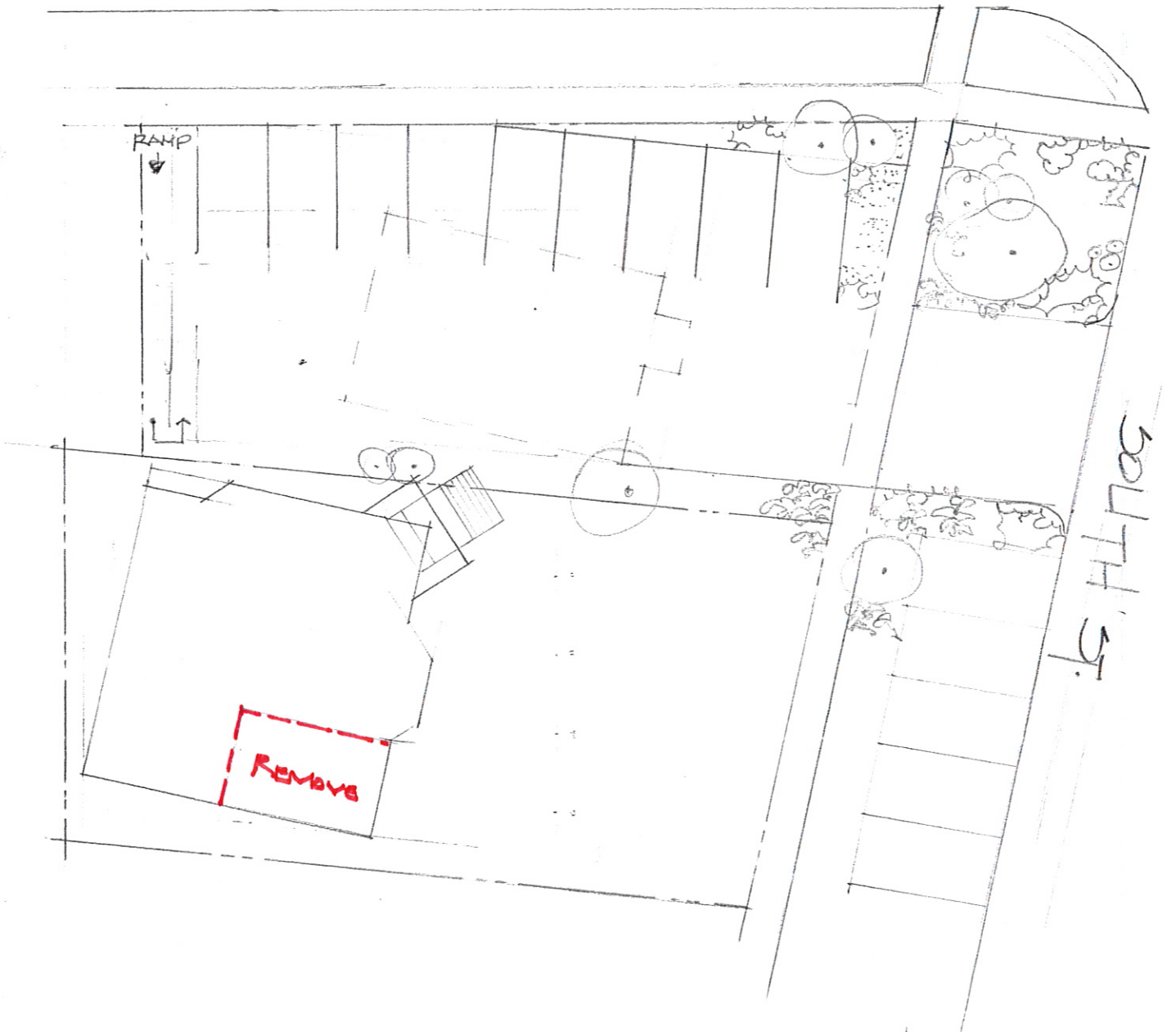


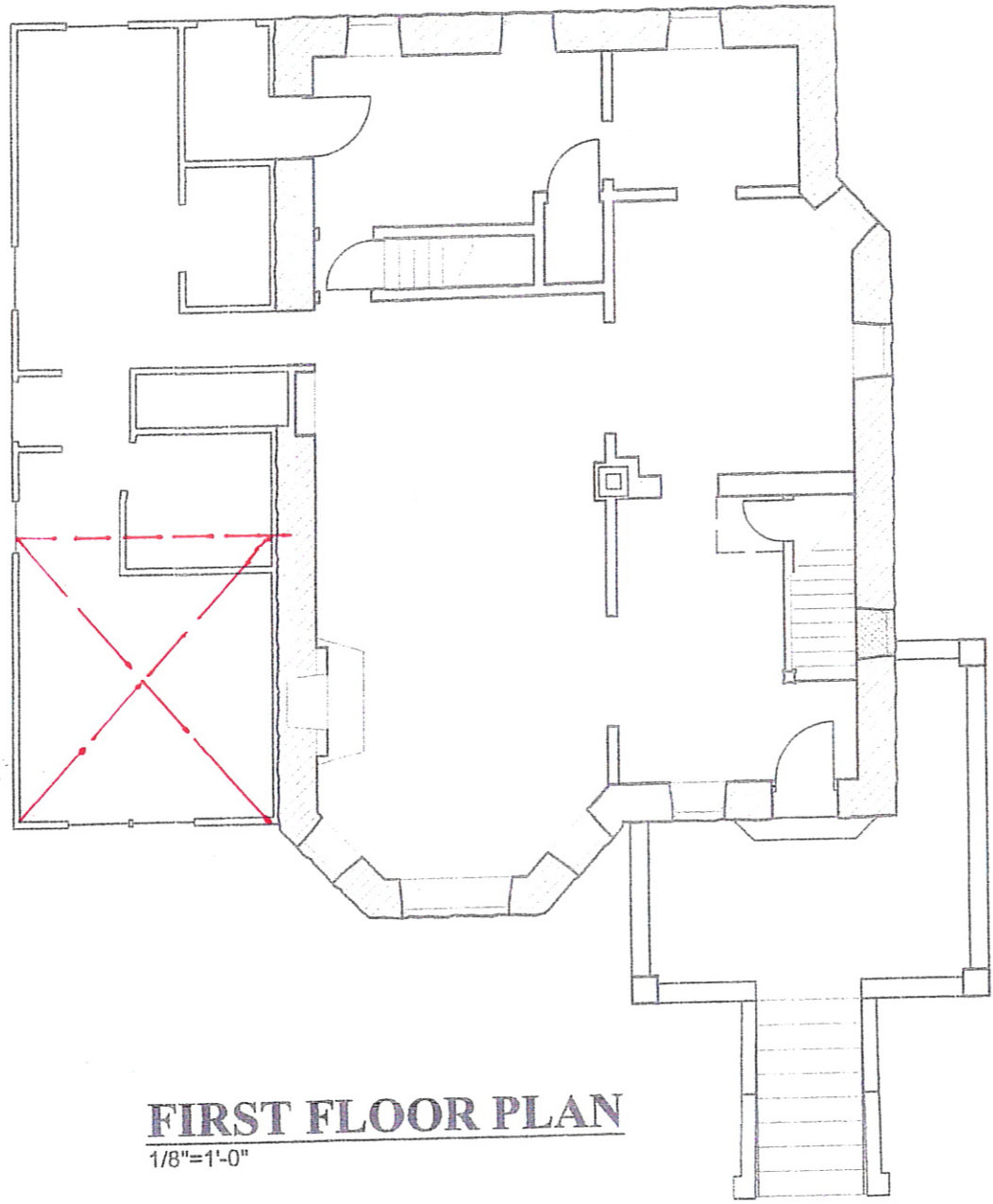
RISHMORE RD



MCGILLYCLIPPY HOUSE

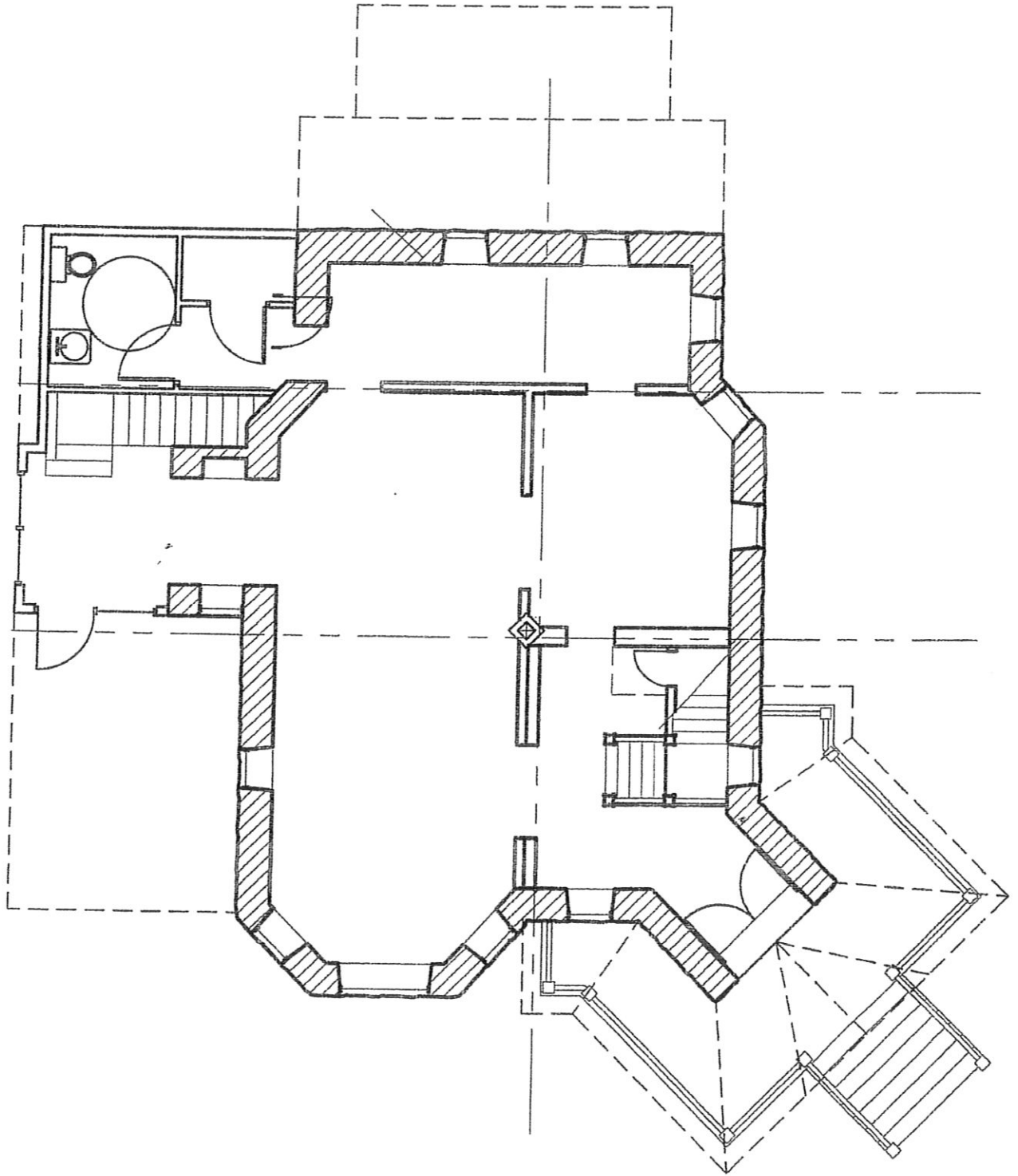


**Dave Stafford
Architecture**
809 South Street, Ste 203
Rapid City, SD 57701
p: 605.791.5001 c: 605.390.2687
e: davestafford@midconetwork.com



FIRST FLOOR PLAN
1/8"=1'-0"

McGILLYCUDDY HOUSE	DRN. BY: DAVE
	DATE: AUG. 24, 2011
BASEMENT & MAIN FLOOR PLAN	
A-1	



FIRST FLOOR

1/8"=1'-0"