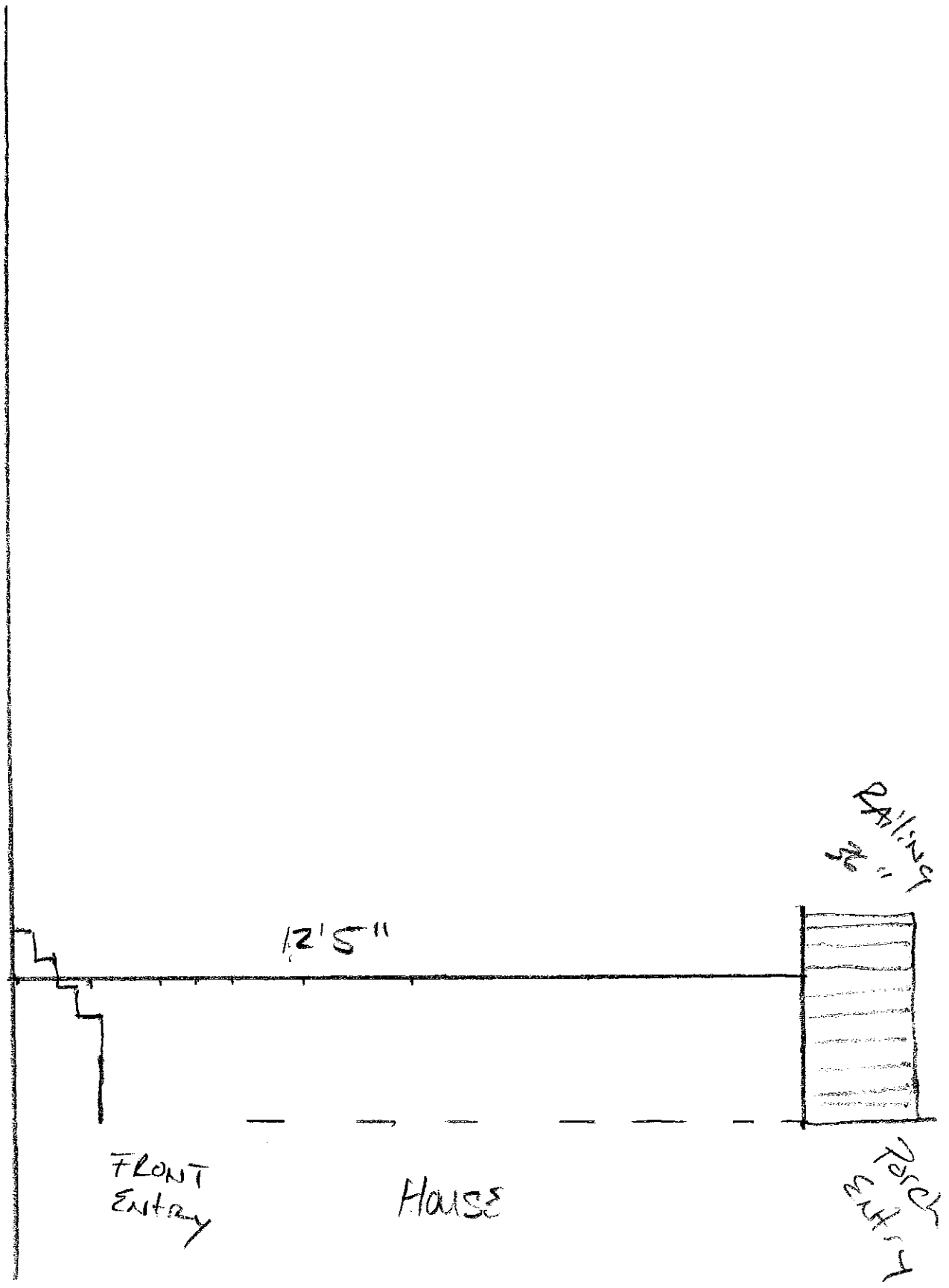


SIDEWALK

Quincy Street

SIDE VIEW



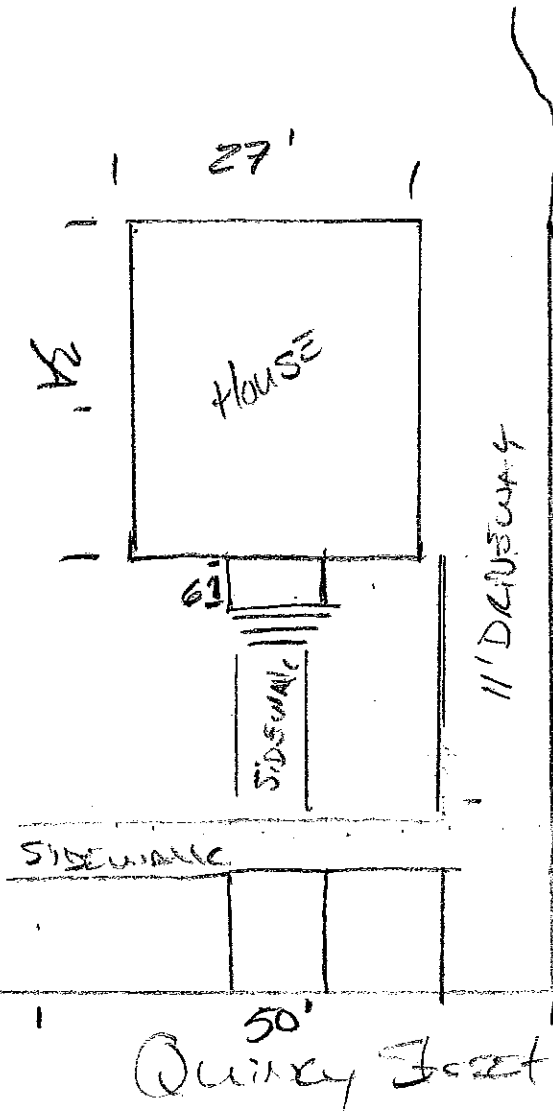
FRONT  
Entry

12'5"

House

Railing

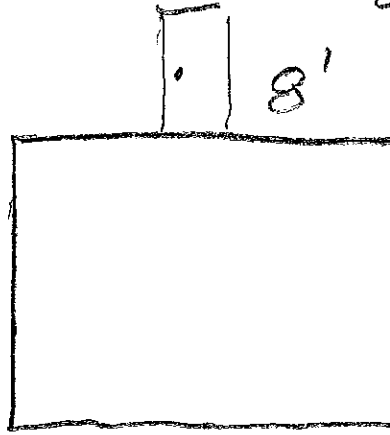
Porch



1" = 20'

24'

Second  
stage



6'

# 915 Quincy Deck

## Materials List

- 8 6' 2x6 GREEN
- 2 4x8'  $\frac{3}{4}$  GREEN
- 2 4x4 CEDAR } or equivalent
- 2 6x6 CEDAR
- SPINDLES AND RAILING
- Composite Decking material
- 1 Sheet 6' x 8' ETBM  
(synthetic roofing)