

THIS AREA IS NOT PART, OF THE BUELL BUILDG

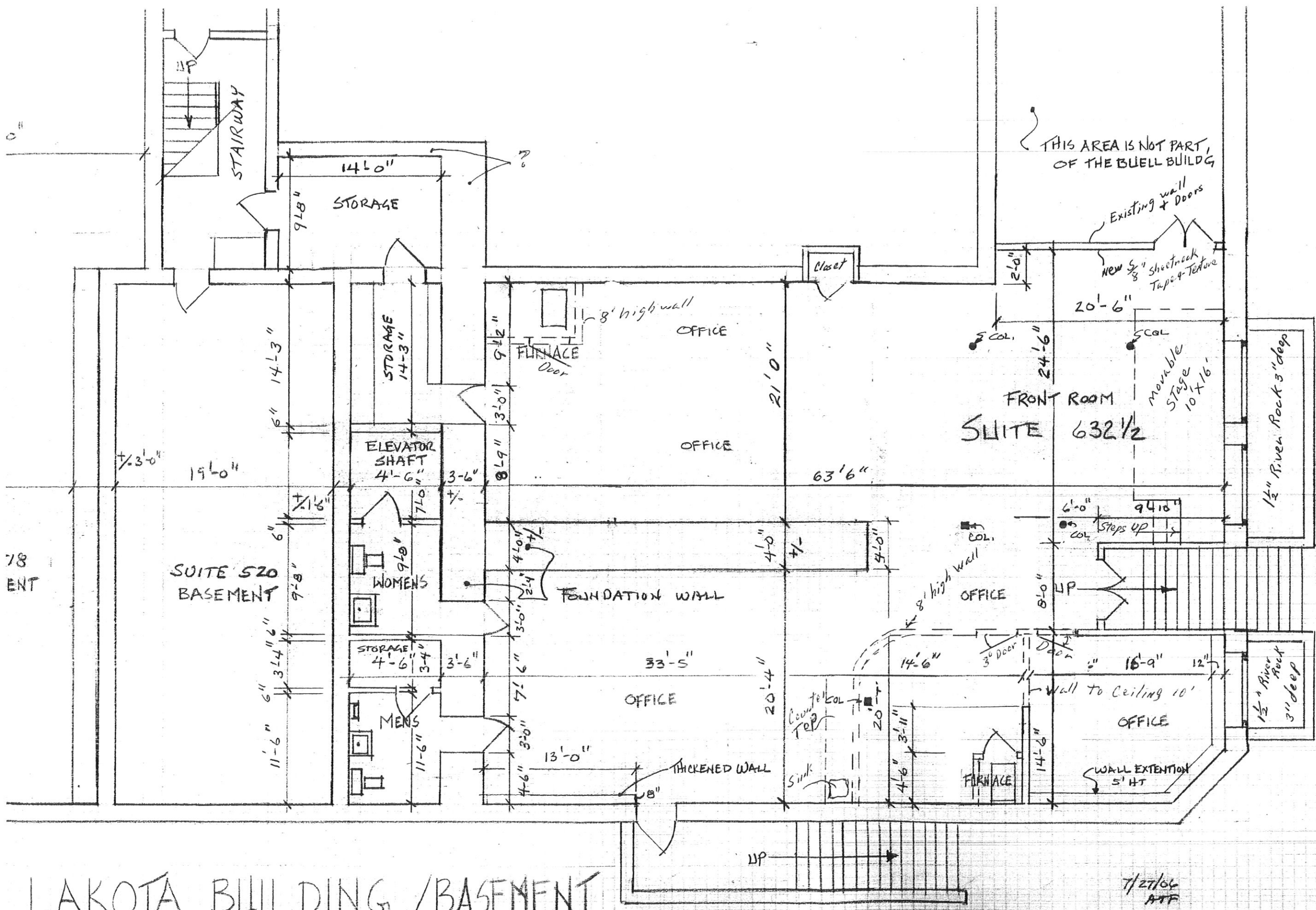
(ST. JOSEPH ST.)

Current

LAKOTA BUILDING / BASEMENT  
7TH STREET

SCALE 1/8" = 1'-0" (N.T.C.)

7/27/04  
ATF



(ST. JOSEPH ST.)

Proposed

RECEIVED

MAY 30 2013

Rapid City Community Planning & Development Services

LAKOTA BUILDING / BASEMENT  
7TH STREET

SCALE 1/8" = 1'-0" (N.T.C.)

7/27/06  
ATF