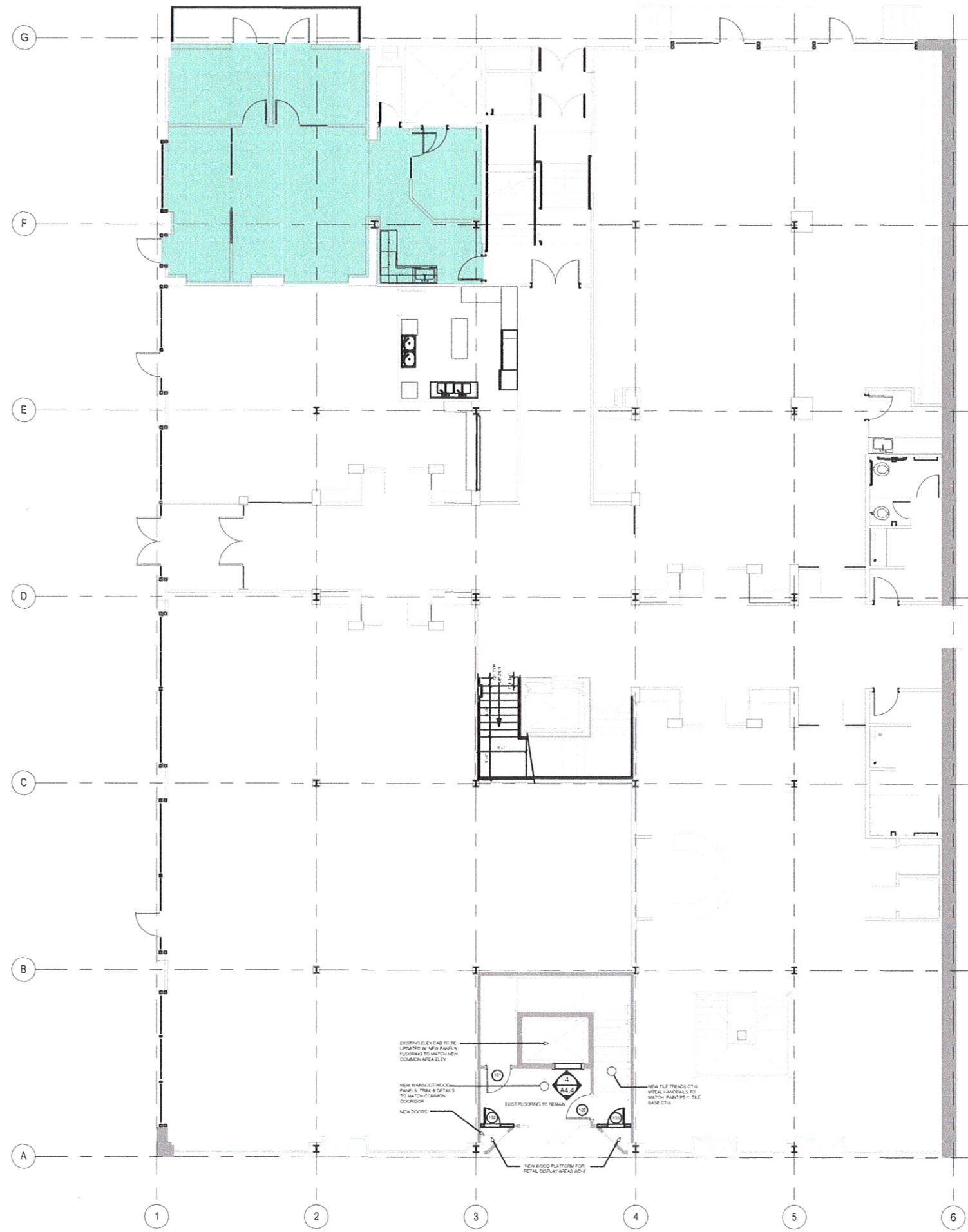


512 Main - Lower Level - New DRC/MSS Office layout

Scale 1/8" = 1'-0"

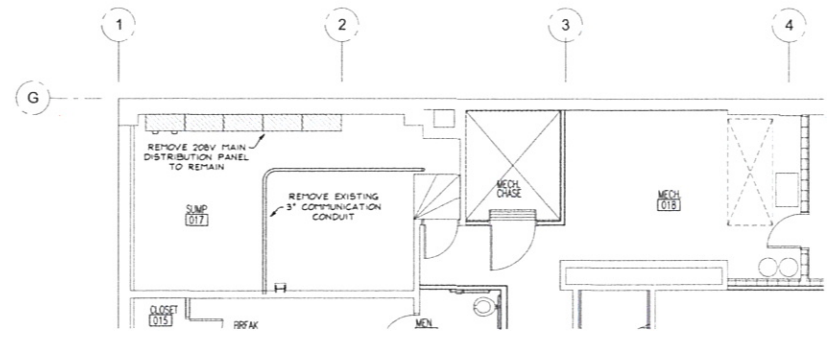
02 May 2013



1 Existing First Floor Plan
 Ax.X Scale 1/4" = 1'-0"

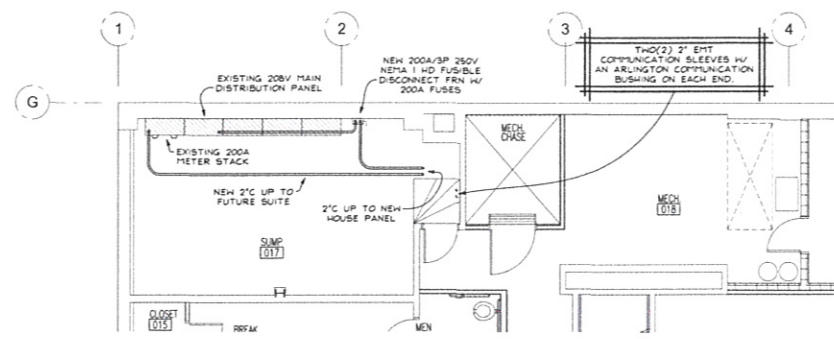
**512 Main Street
 Second Floor Renovation**
 Rapid City, SD 57701

revisions	date
	8/31/12



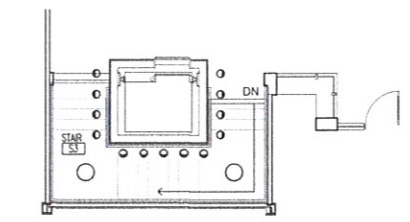
Basement Demolition Plan

SCALE: 1/8" = 1'-0"



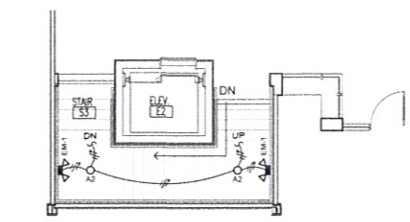
2nd Floor Panel Feeder Detail

SCALE: 1/8" = 1'-0"



Stair "S3" Demo Plan

SCALE: 1/8" = 1'-0"



Stair "S3" Lighting Plan

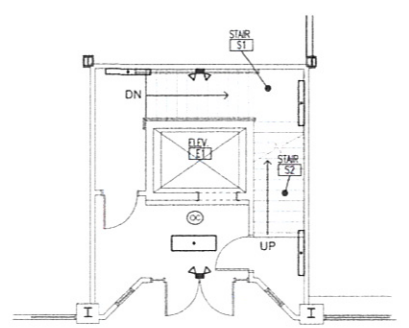
SCALE: 1/8" = 1'-0"

GENERAL DEMOLITION PLAN NOTES

1. REMOVE EXISTING LIGHT FIXTURES & SALVAGE FOR RELOCATION.

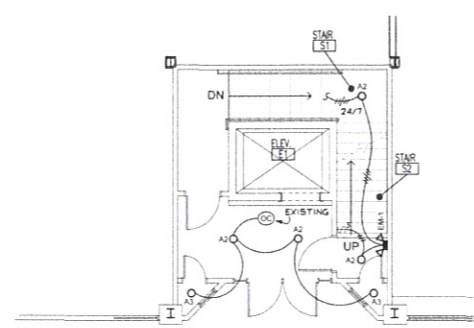
GENERAL RENOVATION PLAN NOTES

1. CONNECT LIGHTS TO EXISTING STAIRWAY LIGHTING POWER CIRCUIT.



Main Entry Demo Plan

SCALE: 1/8" = 1'-0"



Main Entry Lighting Plan

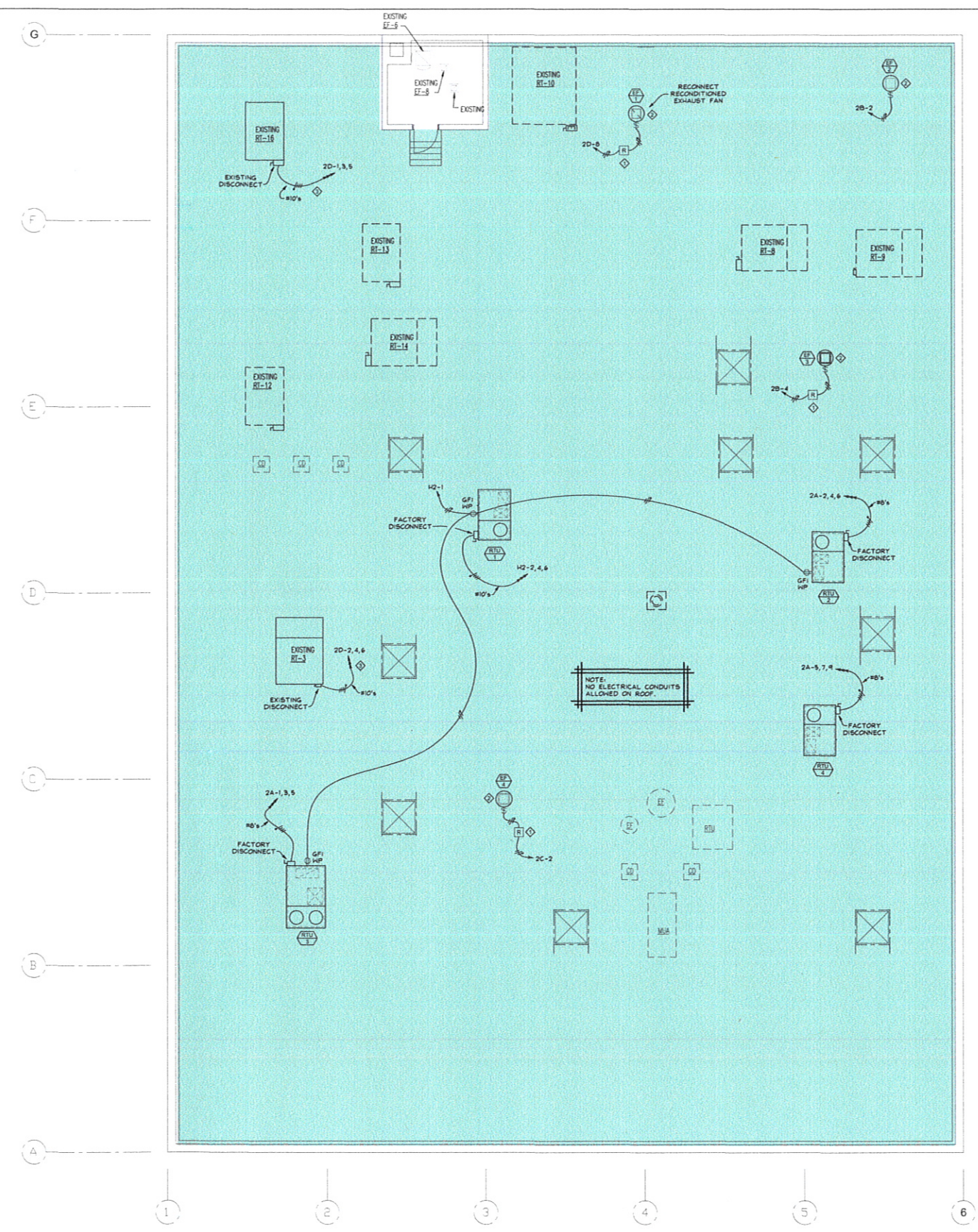
SCALE: 1/8" = 1'-0"

GENERAL DEMOLITION PLAN NOTES

1. REMOVE ALL LIGHT FIXTURES IN LOBBY & STAIRWAY TO 2ND FLOOR.

GENERAL RENOVATION PLAN NOTES

1. CONNECT LIGHTS TO EXISTING STAIRWAY LIGHTING POWER CIRCUIT.



Roof Plan Electrical Plan

SCALE: 1/8" = 1'-0"

SPECIFIC ROOF ELECTRICAL PLAN NOTES

1. PROVIDE A 120V POWER RELAY W/ A 24V AC COIL IN A NEMA 1 ENCLOSURE FOR TC INTERFACE. PROVIDE AN ENGRAVED LABEL "EXHAUST FAN TC RELAY."
2. MOUNT REMOTE FAN SPEED SWITCH, PROVIDED BY M.C. IN ACCESSIBLE LOCATION FOR EACH EXHAUST FAN. COORDINATE W/ MECHANICAL CONTRACTOR.
3. REROUTE EXISTING HVAC ROOFTOP FEEDERS TO NEW FUTURE SUITE PANEL.

ELECTRICAL DESIGN CONSULTANTS
DOUGLAS E. VALLIS PE
 OFFICE (605) 341-1250 • FAX (605) 341-1250
 2261 MINNEWASTA ROAD
 RAPID CITY, SOUTH DAKOTA 57702
 512 MAIN STREET 12-16A



DRAWN BY: SOC	CHECKED BY: DEV	APPROVED BY: DEV	DATE: 5/29/12
512 MAIN STREET SECOND FLOOR RENOVATION Rapid City, South Dakota			
JOHN W. HEY & CO. CONSULTING ENGINEER 920 QUINCY, RAPID CITY, S. DAK 57701 PHONE : (605) 342-3596			

THESE DRAWINGS AND THE DESIGNS HERE ILLUSTRATED ARE THE SOLE PROPERTY OF JOHN W. HEY & COMPANY AND MAY NOT BE REPRODUCED IN WHOLE OR IN PART WITHOUT EXPRESS WRITTEN PERMISSION. COPYRIGHT ©