

CUSTOMER AREA	182 SQ FT
RETAIL AREA	316 SQ FT
STOCK/ SUPPORT	199 SQ FT
<b>TOTAL</b>	<b>697 SQ FT</b>

**CONCEPTUAL FLOOR PLAN**  
 3/16" = 1'-0"

**REVISION 6**

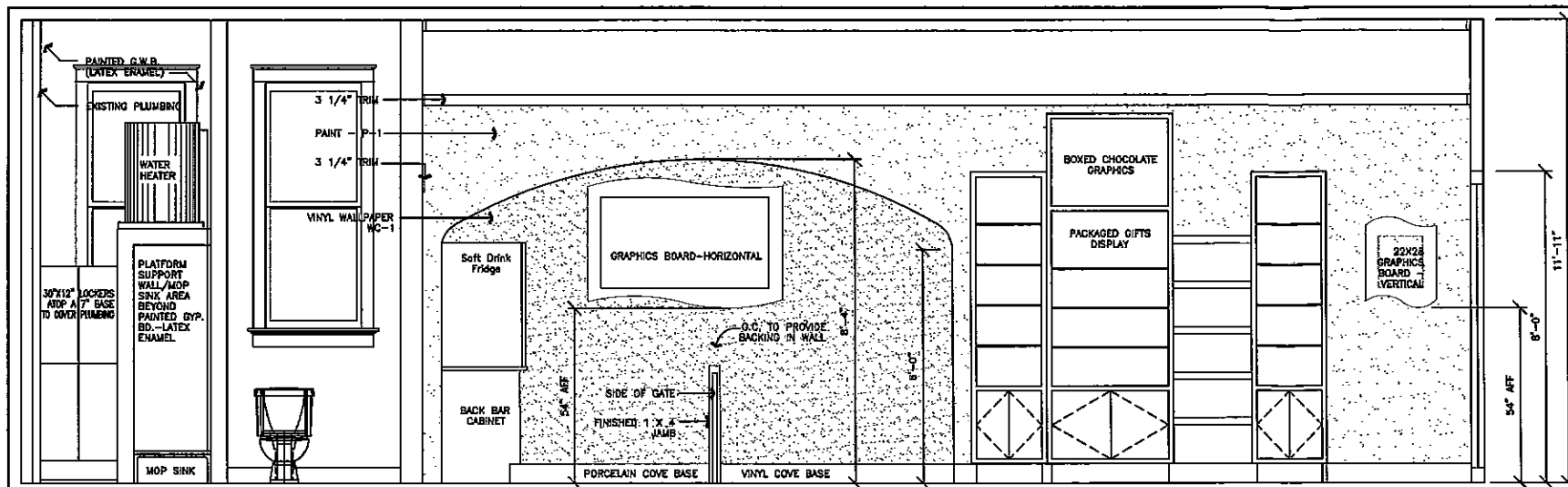
**NOTE:** THIS PRELIMINARY FLOOR PLAN WAS PREPARED WITH LIMITED INFORMATION GIVEN TO RMCF, INC. THE ARCHITECT MUST VERIFY THAT THE EXISTING CONDITIONS AND DIMENSIONS WILL ACCOMMODATE THIS FLOOR PLAN. CONTACT RMCF, INC. WITH ANY DISCREPANCIES.

Rocky Mountain Chocolate Factory  
 265 Turner Drive  
 Durango, CO 81301  
 Phone, 970-259-0554  
 Fax, 970-259-5895

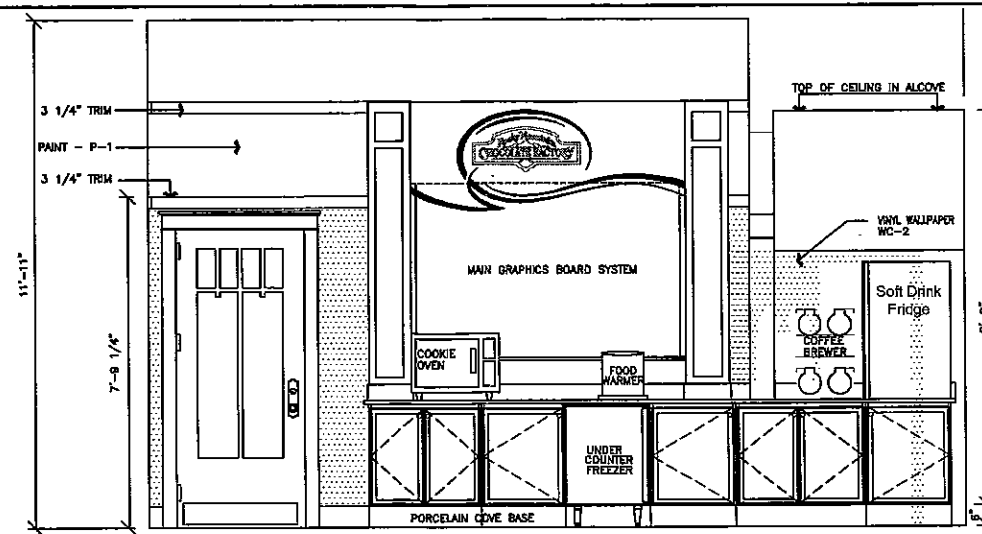
**PROJECT**  
 Rapid City SD RMCF

**DRAWN BY:** JCW  
**DATE:** 2012-10-16  
**REVISED:** 2013-01-12

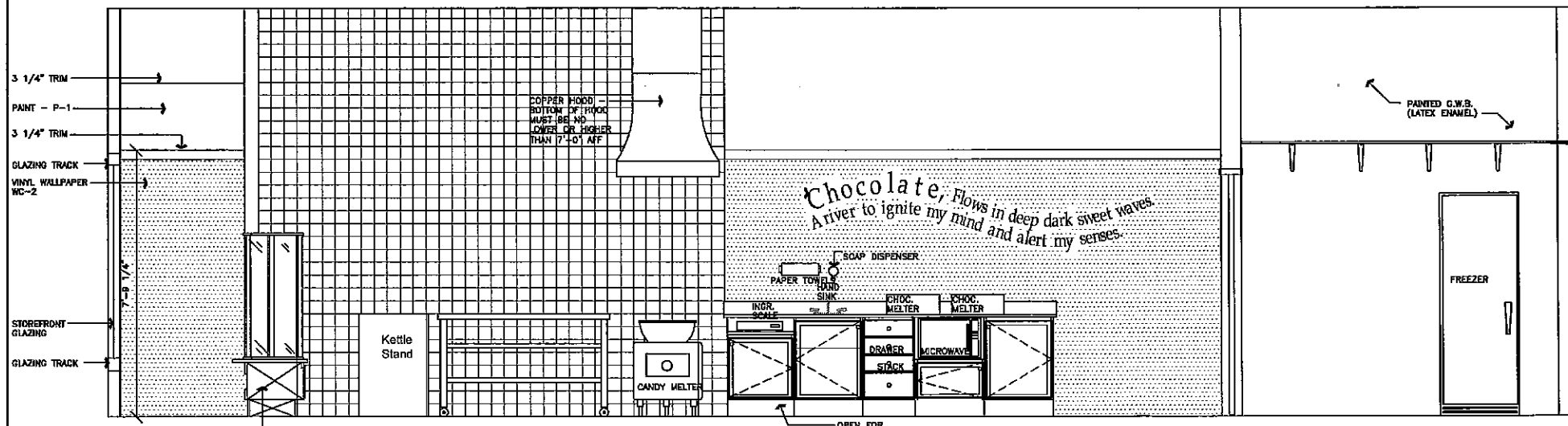
**Drawing Name**  
 RapidSD Rev6.dwg



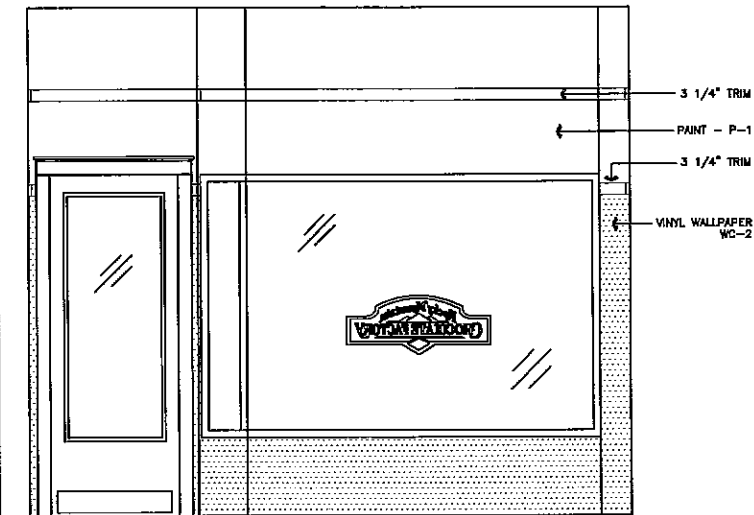
**NORTH WALL**  
SCALE 1/2" = 1'-0"



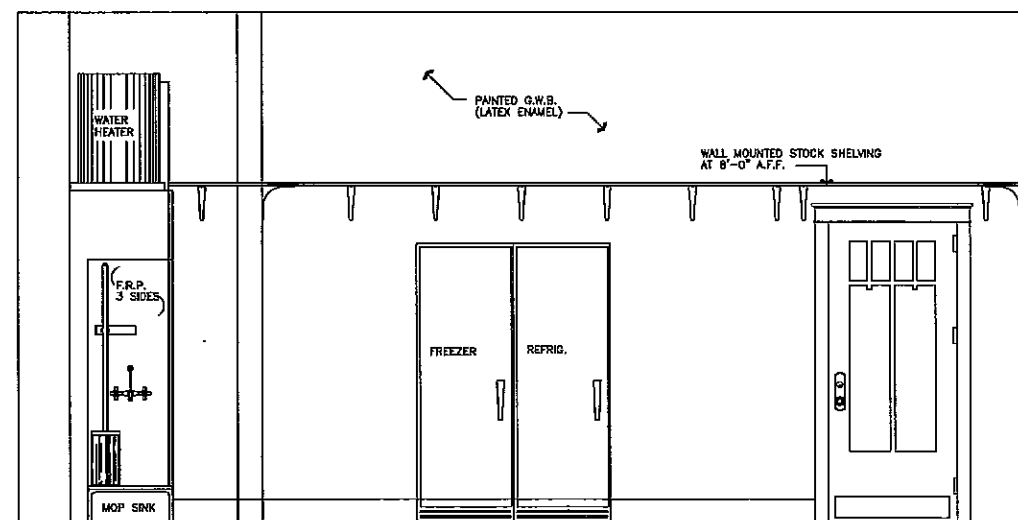
**WEST / BACK WALL**  
SCALE 1/2" = 1'-0"



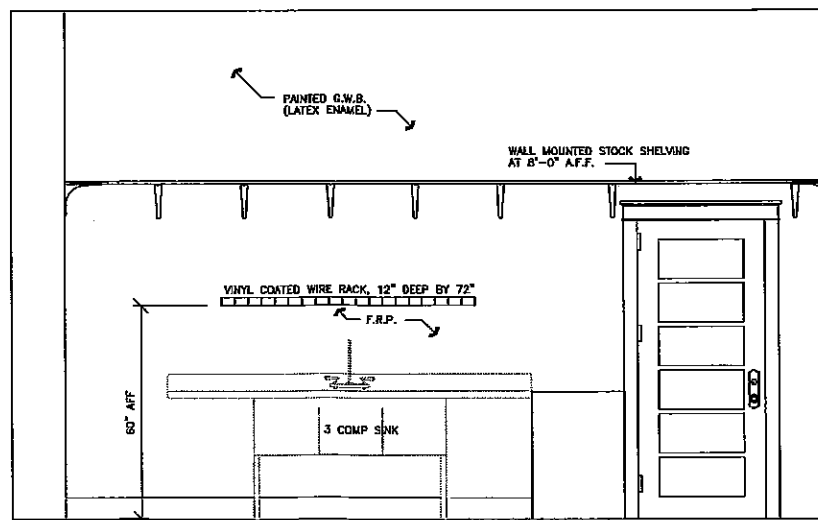
**SOUTH WALL**  
SCALE 1/2" = 1'-0"



**EAST WALL / FRONT OF STORE**  
SCALE 1/2" = 1'-0"



**EAST WALL / BACK ROOM**  
SCALE 1/2" = 1'-0"



**WEST WALL / BACK ROOM**  
SCALE 1/2" = 1'-0"

Revisions	
No.	Description



Henriksen, Inc.  
526 Saint Joseph Street, Suite A  
Rapid City, South Dakota 57701  
Phone (605) 394-0189 Fax (605) 341-9288



Interior Elevations  
Rocky Mountain Chocolate Factory  
Rapid City, SD



**Preliminary**  
Not For Construction  
**A2**  
Drawing Number