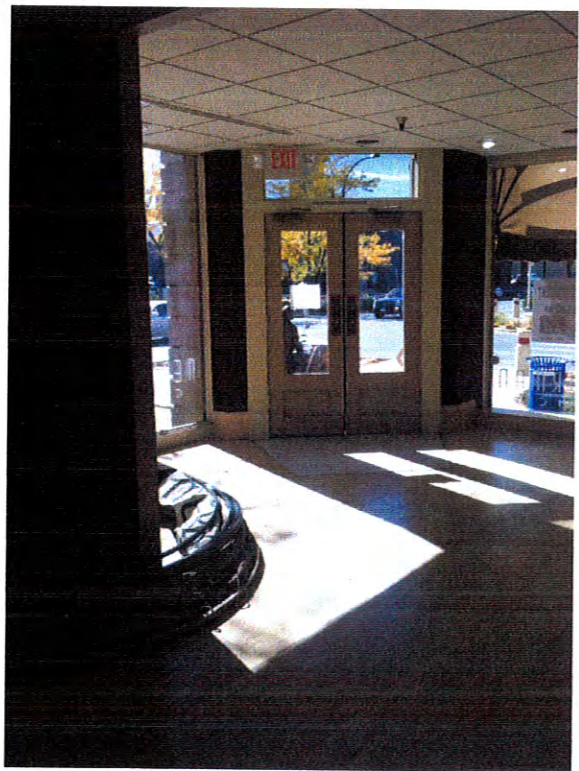
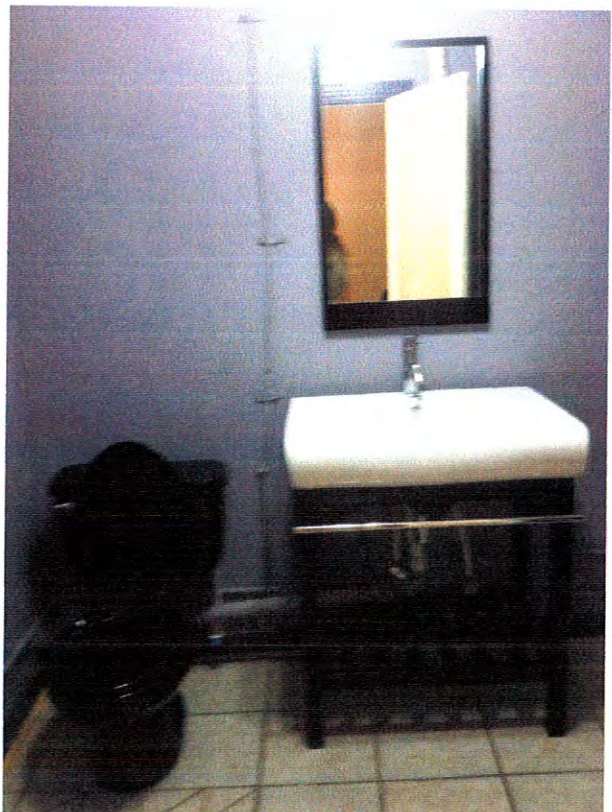


removed utility
Sink added



bathroom
ADA improvements

removed





← wall removed



Remove cabinet add utility sink

Remove



Bathroom ADA improvements

Remove





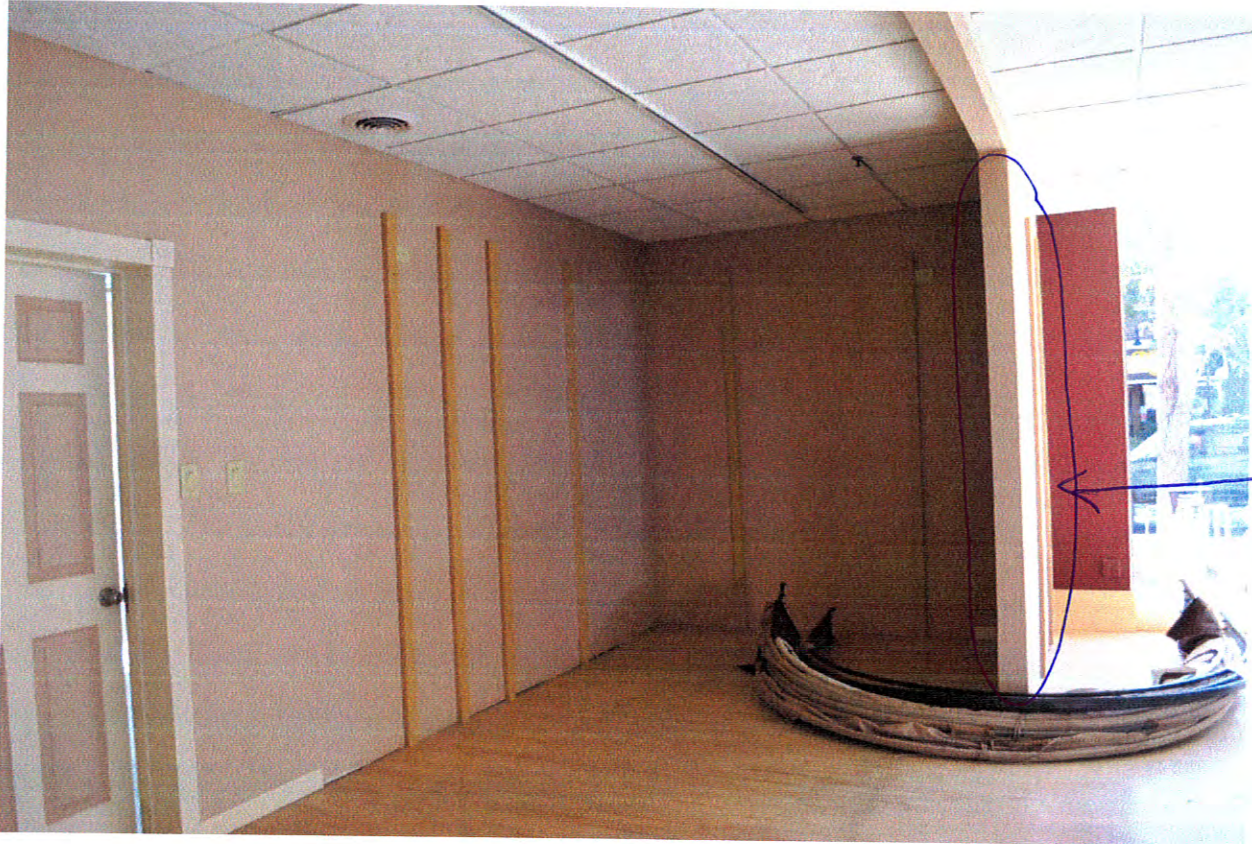
← expose Arched Windows



← remove drop ceiling



← expose Arched Windows





back
side of
above
wavel

column exposed



← door opening made wider



← removed

← ceiling removed

← all walls stay

← flooring stays



Cut out →





← improved duct work

← suspended track lighting