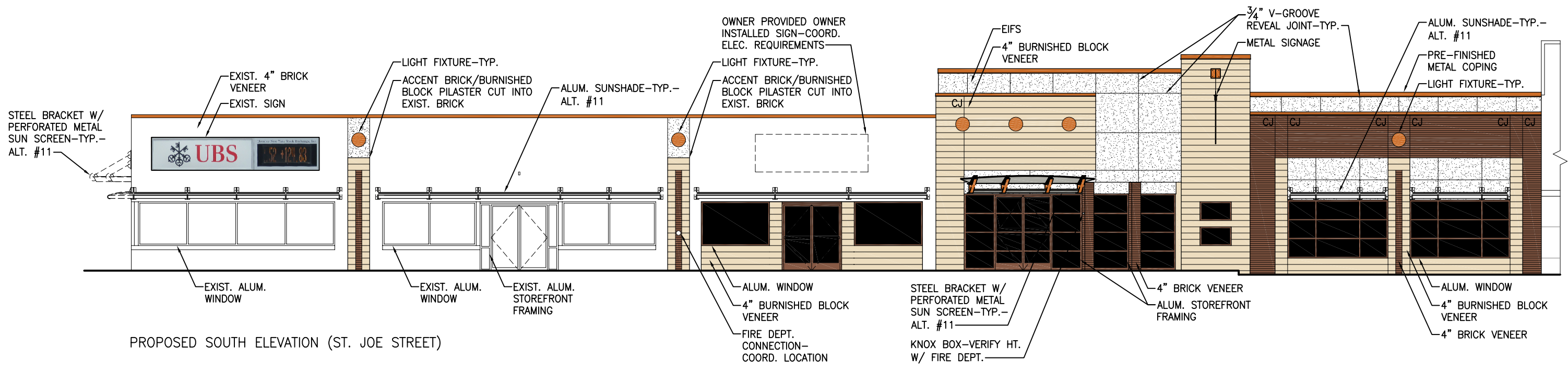


EXISTING SOUTH ELEVATION (ST. JOE STREET)



PROPOSED SOUTH ELEVATION (ST. JOE STREET)

RENOVATION TO  
**SUZIE CAPPA ART CENTER - BH WORKS**

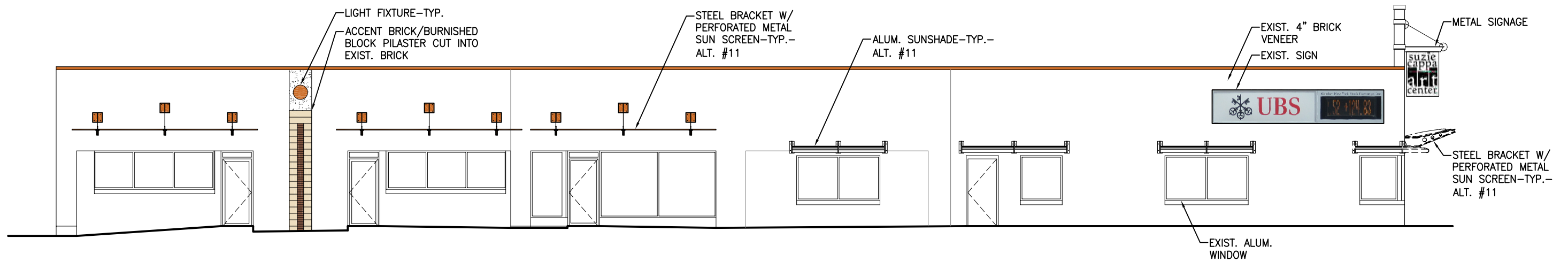
SCALE: 3/32" = 1'-0"

ISSUED 08/29/12

**UPPER DECK**  
 ARCHITECTS, INC.  
 50 MINNESOTA ST. - SUITE 1  
 RAPID CITY, SD 57701  
 PH: 605 721-0237  
 FAX: 605 721-0240



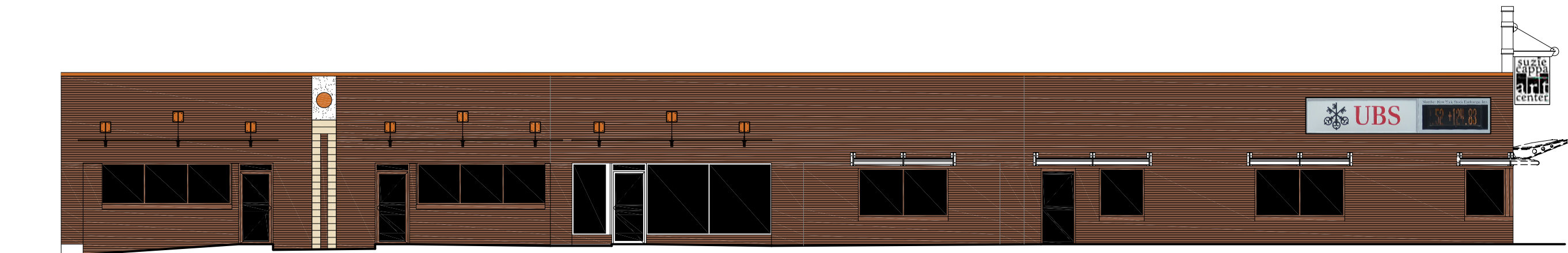
EXISTING WEST ELEVATION (MT. RUSHMORE ROAD)



PROPOSED WEST ELEVATION (MT. RUSHMORE ROAD)



PROPOSED SOUTH ELEVATION (ST. JOE STREET)



PROPOSED WEST ELEVATION (MT. RUSHMORE ROAD)

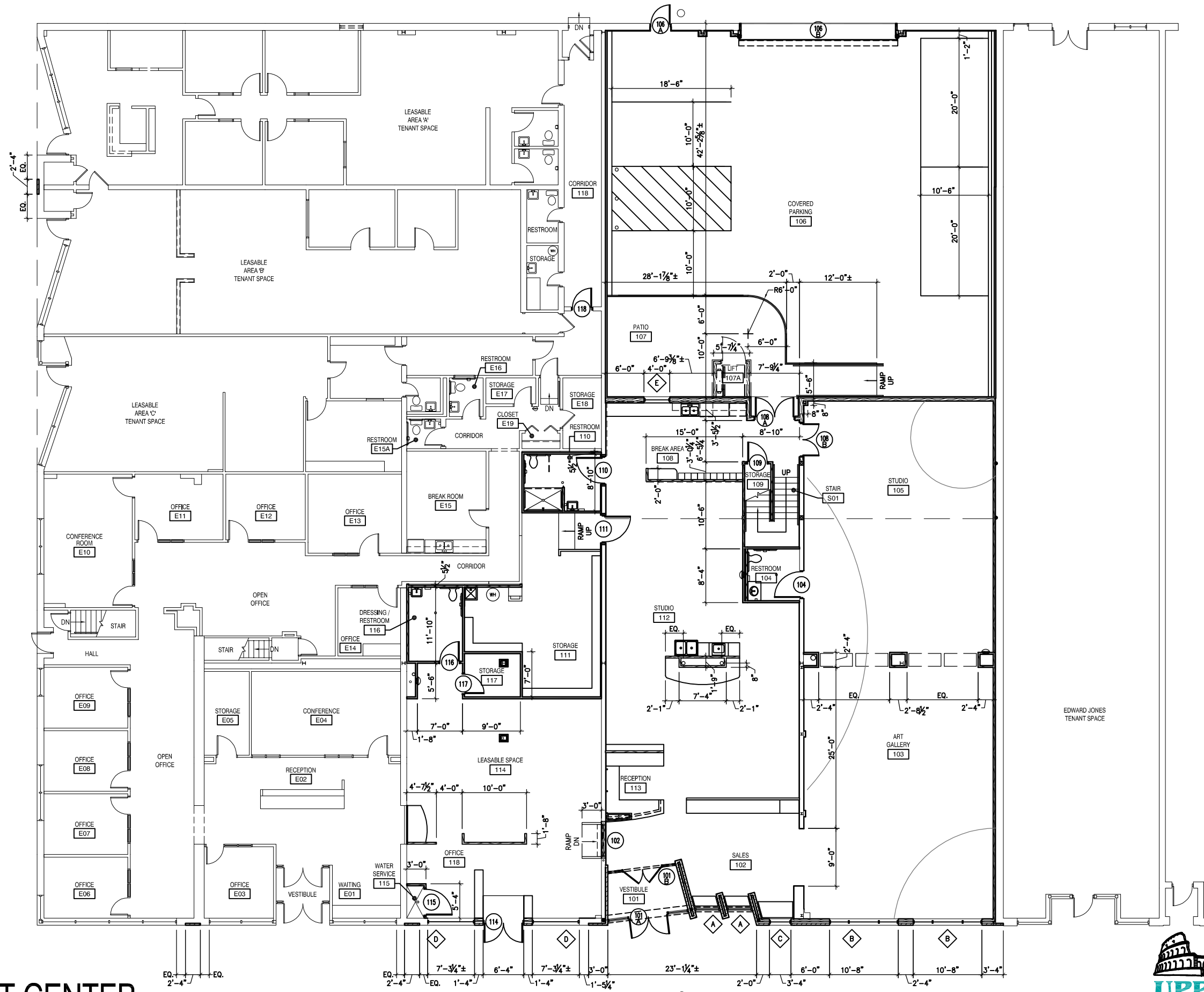
RENOVATION TO  
**SUZIE CAPPA ART CENTER - BH WORKS**

SCALE: 3/32" = 1'-0"

ISSUED 08/29/12



50 MINNESOTA ST. - SUITE 1  
 RAPID CITY, SD 57701  
 PH: 605 721-0237  
 FAX: 605 721-0240



# SUZIE CAPPA ART CENTER

SCALE: 1/16" = 1'-0"

ISSUED 08/29/12



50 MINNESOTA ST. - SUITE 1  
 RAPID CITY, SD 57701  
 PH: 605 721-0237  
 FAX: 605 721-0240