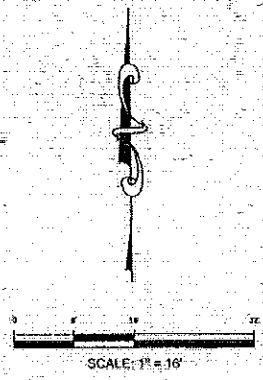


**SALA ARCHITECTS**  
 MINNEAPOLIS  
 324 E Hennepin Ave. #500  
 Minneapolis, MN 55414  
 TEL: (612) 276-3037  
 FAX: (612) 276-2001  
 STILLWATER  
 901 South Fourth Street  
 Stillwater, MN 55082  
 TEL: (651) 551-5093  
 FAX: (651) 551-7327  
 www.SALAArch.com

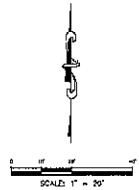
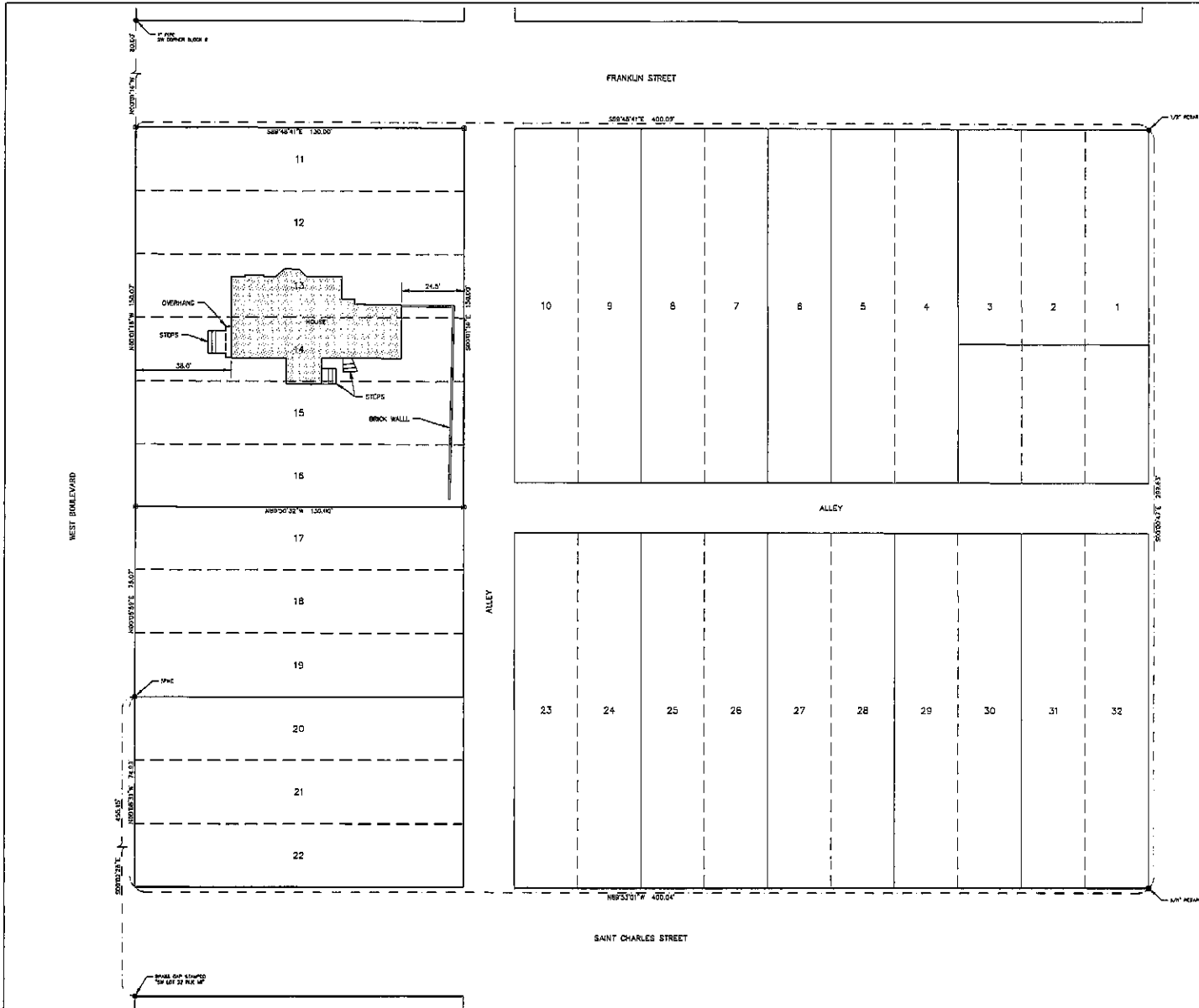


**FMG, Inc.**  
 3700 Sturgis Road  
 Rapid City, SD 57702-0317  
 (605) 342-4105 FAX (605) 342-4222  
 www.fmgengineering.com

Proposed Site Plan	Project Number: 11111
	Project Architect: Paul Ruffin
	Drawn By: TR
	Date of Issue: 05/19/07



www.fmg-inc.com



**LEGEND**

- FOUND SURVEY MONUMENT
- SET 5/8" REBAR WITH SURVEY CAP MARKED "FMS INC. LS DD 6118"

NOTE:  
SURVEY SPOTS ON HOUSE WERE TAKEN APPROXIMATELY 3' ABOVE GROUND.

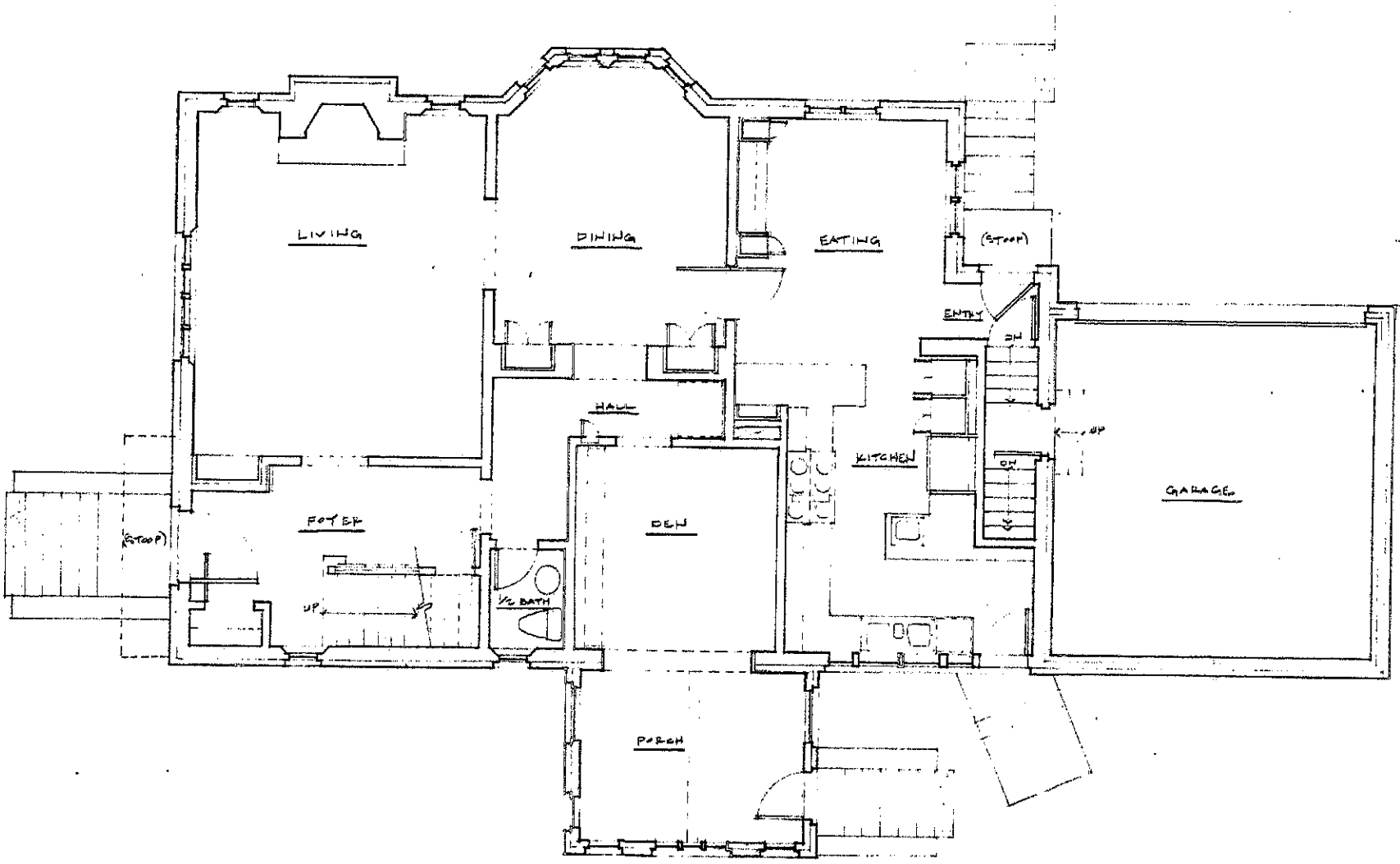
**FMG, Inc.**  
 3700 Sturgis Road  
 Rapid City, SD 57702-0317  
 (605) 342-4105 FAX (605) 342-0222  
 www.fmginc.com

**PRELIMINARY**

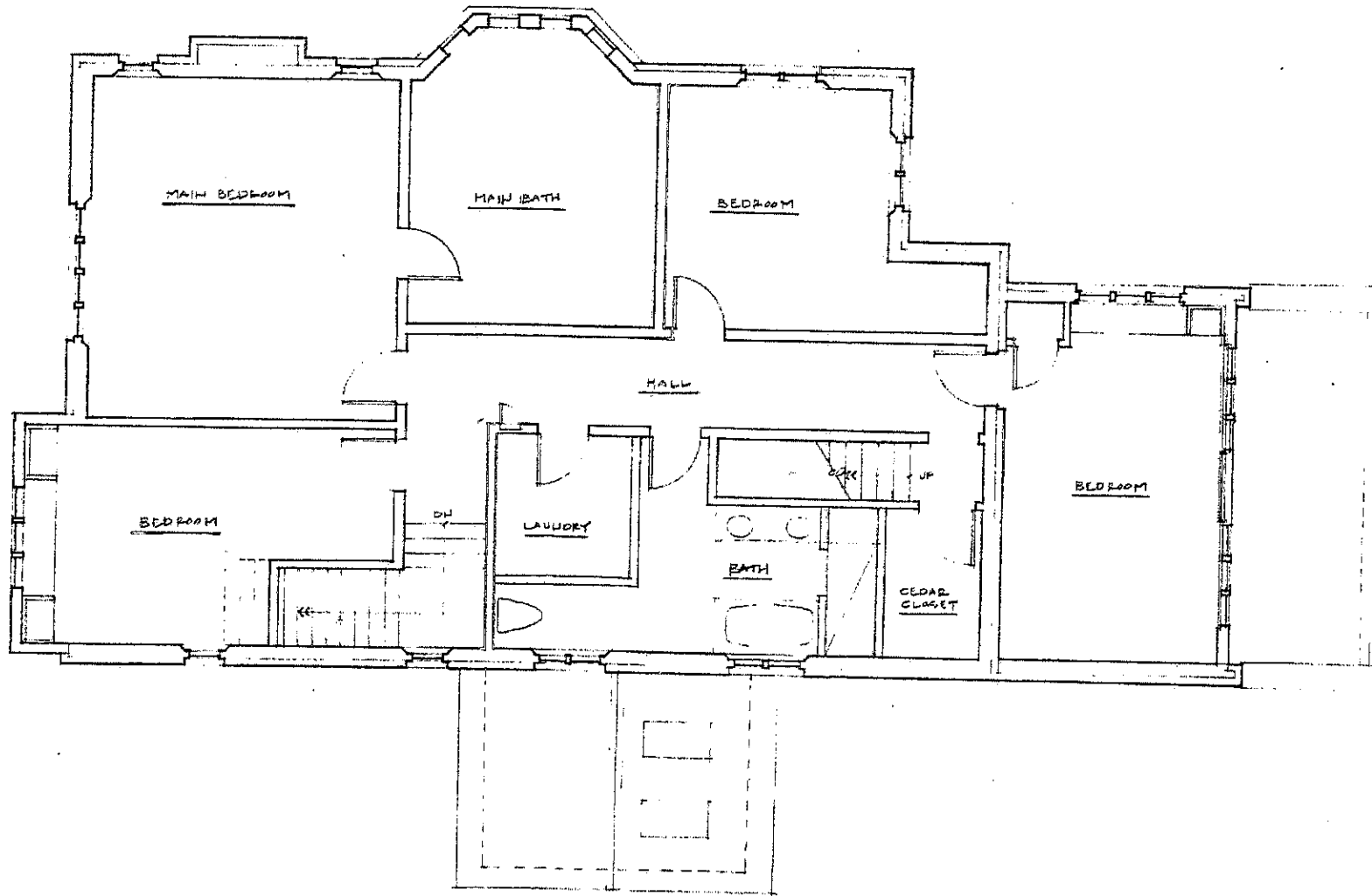
File Number:	
Location:	SE/4, SECTION 2
Town, Rty, & Sec:	
Surveyed By:	SM/SM
Date:	MAY 2012
Designed By:	KJS
Drawn By:	JST
Checked By:	JST

**LOTS 11-16 OF BLOCK 13 OF WEST BOULEVARD ADDITION RAPID CITY, SD**

Revision / Date  
 Sheet Name:  
**SITE SURVEY**  
 Sheet Number:  
**1 of 1**



MAIN LEVEL PLAN (EXISTING)  
1/4" = 1'-0"  
NORTH



1
2
 UPPER LEVEL PLAN (EXISTING)  
 1/4" = 1'-0"



MINNEAPOLIS  
 255 Hennepin Ave. 2ND  
 Minneapolis, MN 55414  
 TEL (612) 338-8817  
 FAX (612) 339-9007

STELLWATER  
 101 South Fourth Street  
 Stollwagen, MN 55082  
 TEL (612) 331-7001  
 FAX (612) 331-7177  
 www.SJLArch.com

**Tudor on West Boulevard**  
 1602 West Boulevard  
 Rapid City, SD 57702

THIS DRAWING IS A PART OF THE PROJECT AND NOT BE LOANED, REPRODUCED, COPIED, OR USED FOR ANY PURPOSE WITHOUT THE WRITTEN CONSENT OF THE ARCHITECT.

DO NOT INTERPRET DIMENSIONS BY SCALING OF THESE DRAWINGS.

VERIFY ALL DIMENSIONS AND CONDITIONS ON SITE AND CONTACT THE ARCHITECT.

Project Number:  
10111

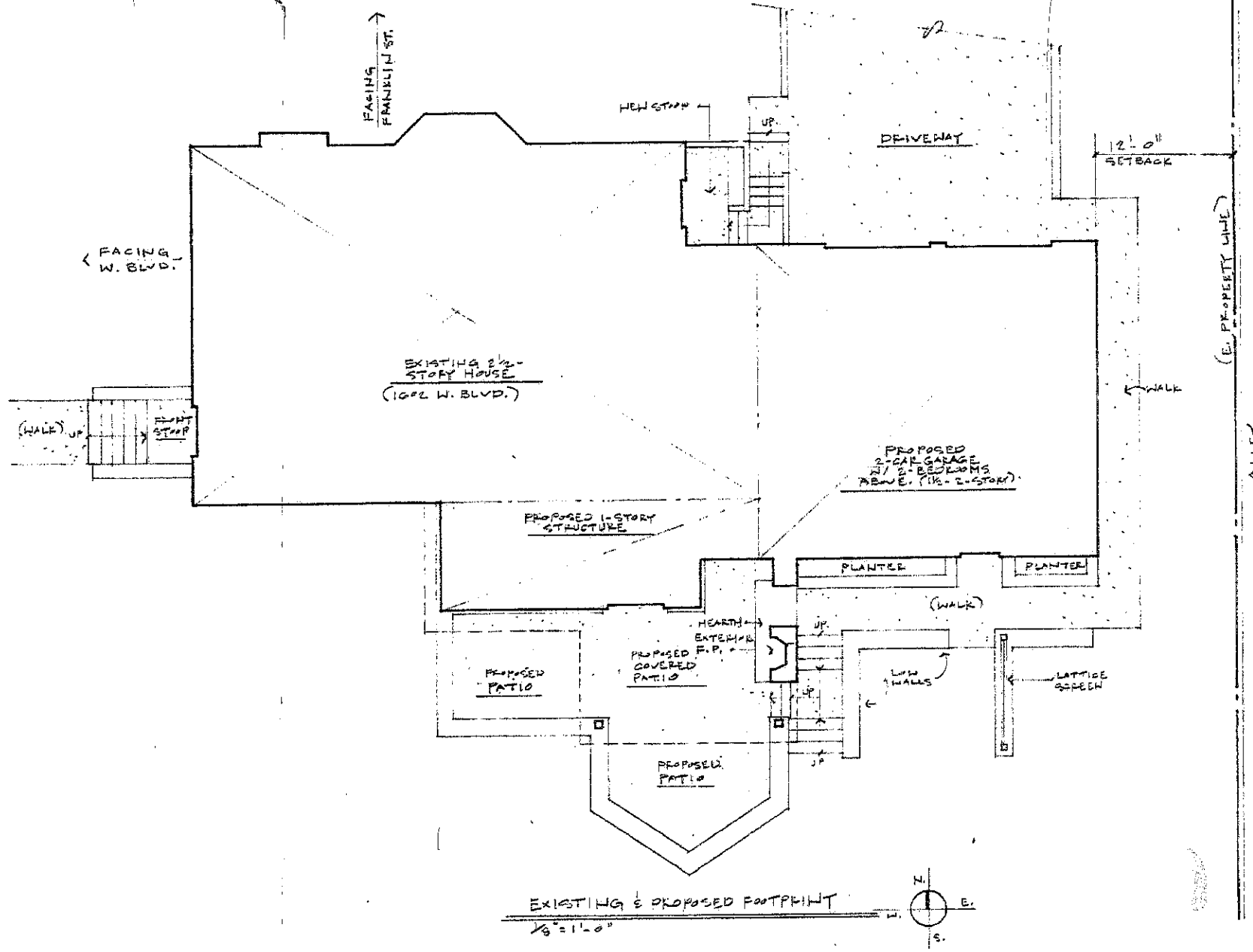
Project Architect:  
Paul Stearns

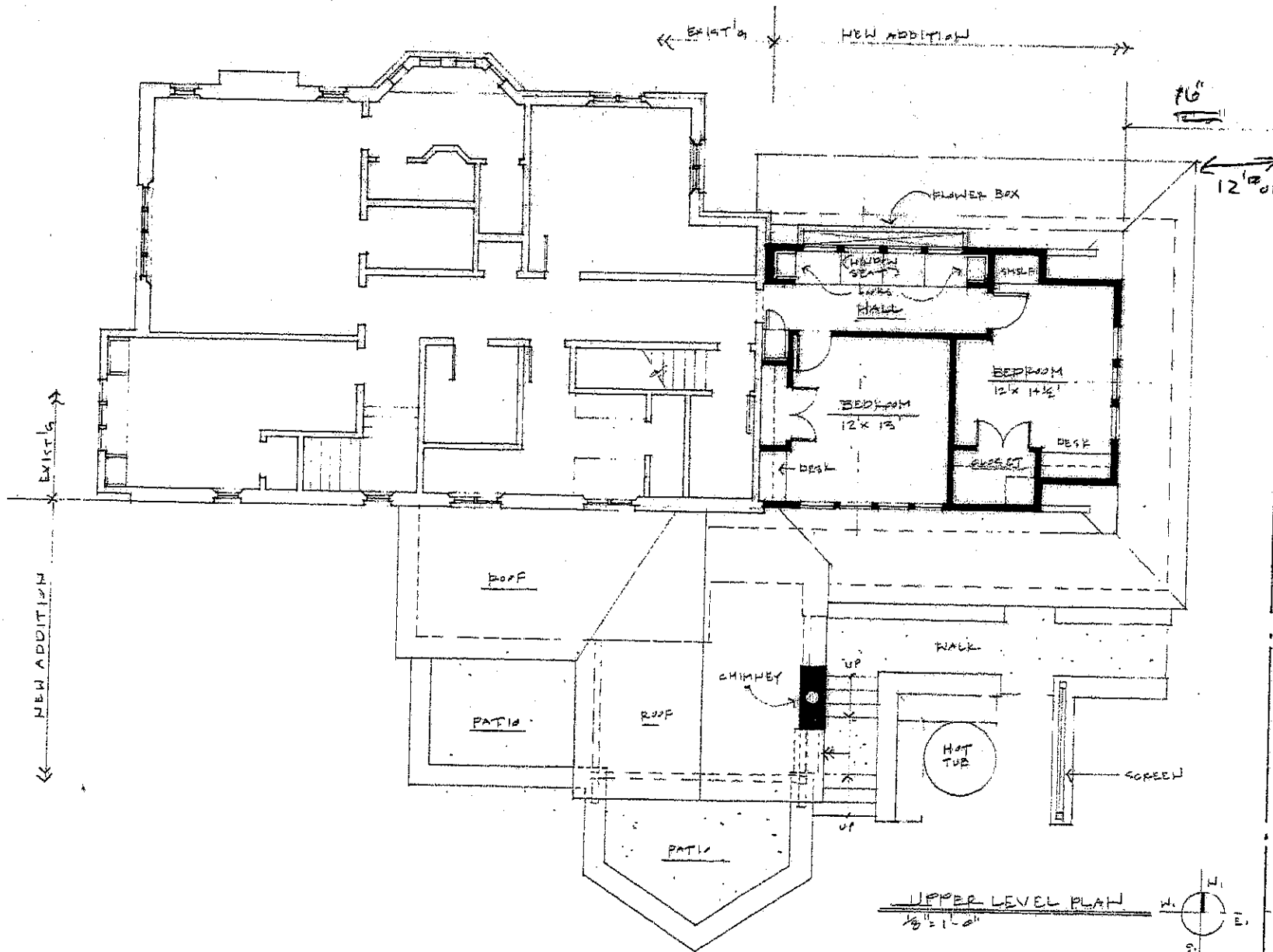
Drawn By:  
PH

Date of Issue:  
4/29/2012

H. Society  
5.24.12

Sheet No. **A1**





UPPER LEVEL PLAN  
 1/8" = 1'-0"

Architect, Inc.  
**MINNEAPOLIS**  
 324 E. Hennepin Ave. #20  
 Minneapolis, MN 55414  
 TEL: (612) 378-3037  
 FAX: (612) 378-0001

**STILLWATER**  
 904 South Fourth Street  
 Stillwater, MN 55082  
 TEL: (612) 351-0961  
 FAX: (612) 351-2397  
 www.SAAArch.com

**Tudor on West Boulevard**  
 1602 West Boulevard  
 Rapid City, SD 57702

THESE DRAWINGS ARE A CONTRACT INSTRUMENT AND ARE NOT TO BE REPRODUCED, COPIED, REPRODUCED, OR TRANSMITTED IN ANY FORM OR BY ANY MEANS, ELECTRONIC OR MECHANICAL, INCLUDING PHOTOCOPYING, RECORDING, OR BY ANY INFORMATION STORAGE AND RETRIEVAL SYSTEM.  
 DO NOT OBTAIN TIME NEEDED BY SCALING OFF THESE DRAWINGS.  
 SHOULD YOU REQUIRE ADDITIONAL DRAWINGS, PLEASE CONTACT THE ARCHITECT.

Project Number:  
 11311

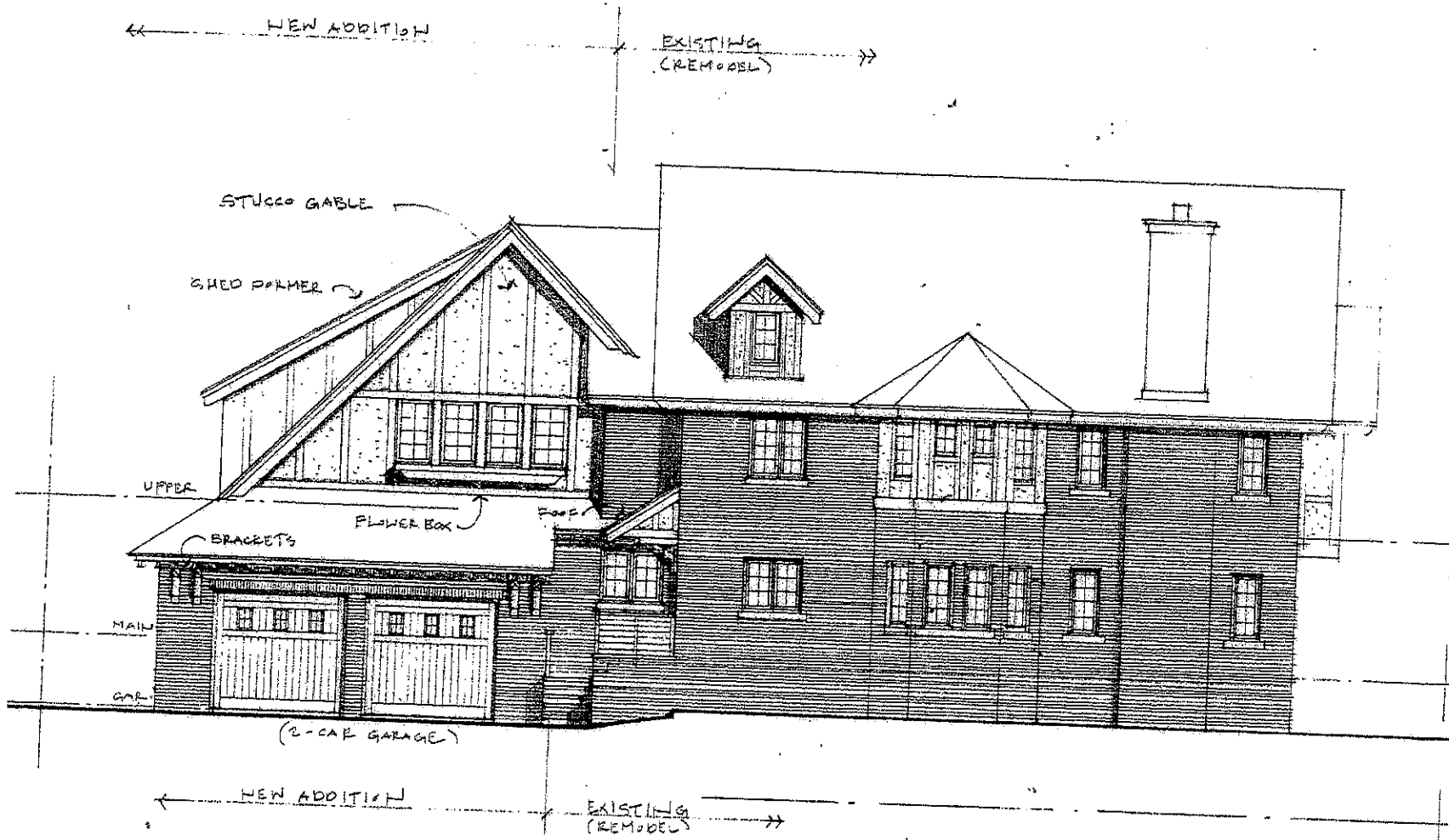
Project Architect:  
 Paul Blum

Drawn By:  
 RB

Date of Issue:  
 11/20/07

**BUILDER REVIEW**  
**SET (ESTIMATE)**  
 2-1-12

Sheet No. **A1**



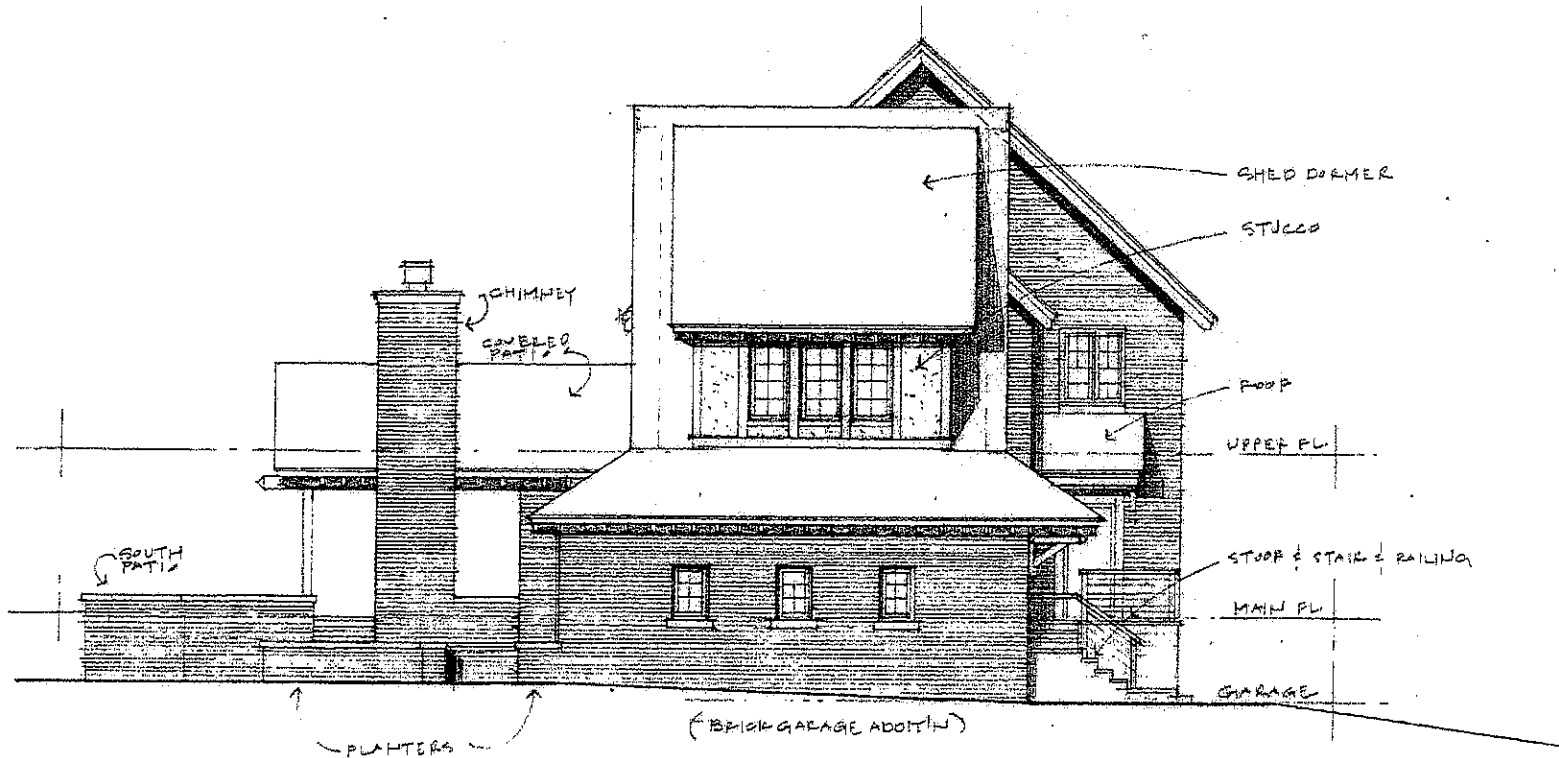
FRANKLIN ST. ELEVATION (NORTH)  
 1/8" = 1'-0"

ARCHITECT: INC.  
 MINNEAPOLIS  
 126 E. Hennepin Ave. #2  
 Minneapolis, MN 55414  
 TEL: 612.379.3637  
 FAX: 612.379.3001  
 STILLWATER  
 204 South Fourth Street  
 Stillwater, MN 55082  
 TEL: 612.351.0967  
 FAX: 612.351.0757  
 www.GALAS2.com

Tudor on West Boulevard  
 1602 West Boulevard  
 Rapid City, SD 57702

THIS DOCUMENT IS A DESIGN PRESENTATION AND NOT A CONTRACT. IT IS NOT TO BE USED FOR CONSTRUCTION. DIMENSIONS AND MATERIALS ARE APPROXIMATE UNLESS SPECIFIED OTHERWISE. DO NOT DETRIMENT DIMENSIONS BY SCALING OFF THESE DRAWINGS. MAKE ALL NECESSARY REVISIONS, CHANGES, AND CORRECTIONS AT THE ARCHITECT'S OFFICE.

Project Number: 1111  
 Project Architect: Paul Baum  
 Drawn By: PB  
 Date of Issue: 11/26/2011  
 BUILDER REVIEW SET (ESTIMATE)  
 2.1.12  
 Sheet No. A1



ALLEY (EAST) ELEVATION

1/8" = 1'-0"

Architects, Inc.  
**MINNEAPOLIS**  
 124 E. Minneapolis Ave. #20  
 Minneapolis, MN 55414  
 TEL: (612) 379-2033  
 FAX: (612) 379-0001  
**STEELEWATER**  
 304 South Fourth Street  
 Steelevater, MN 55007  
 TEL: (651) 351-8906  
 FAX: (651) 351-2192  
 www.SAL-Care.com

**Tudor on West Boulevard**  
 1602 West Boulevard  
 Rapid City, SD 57702

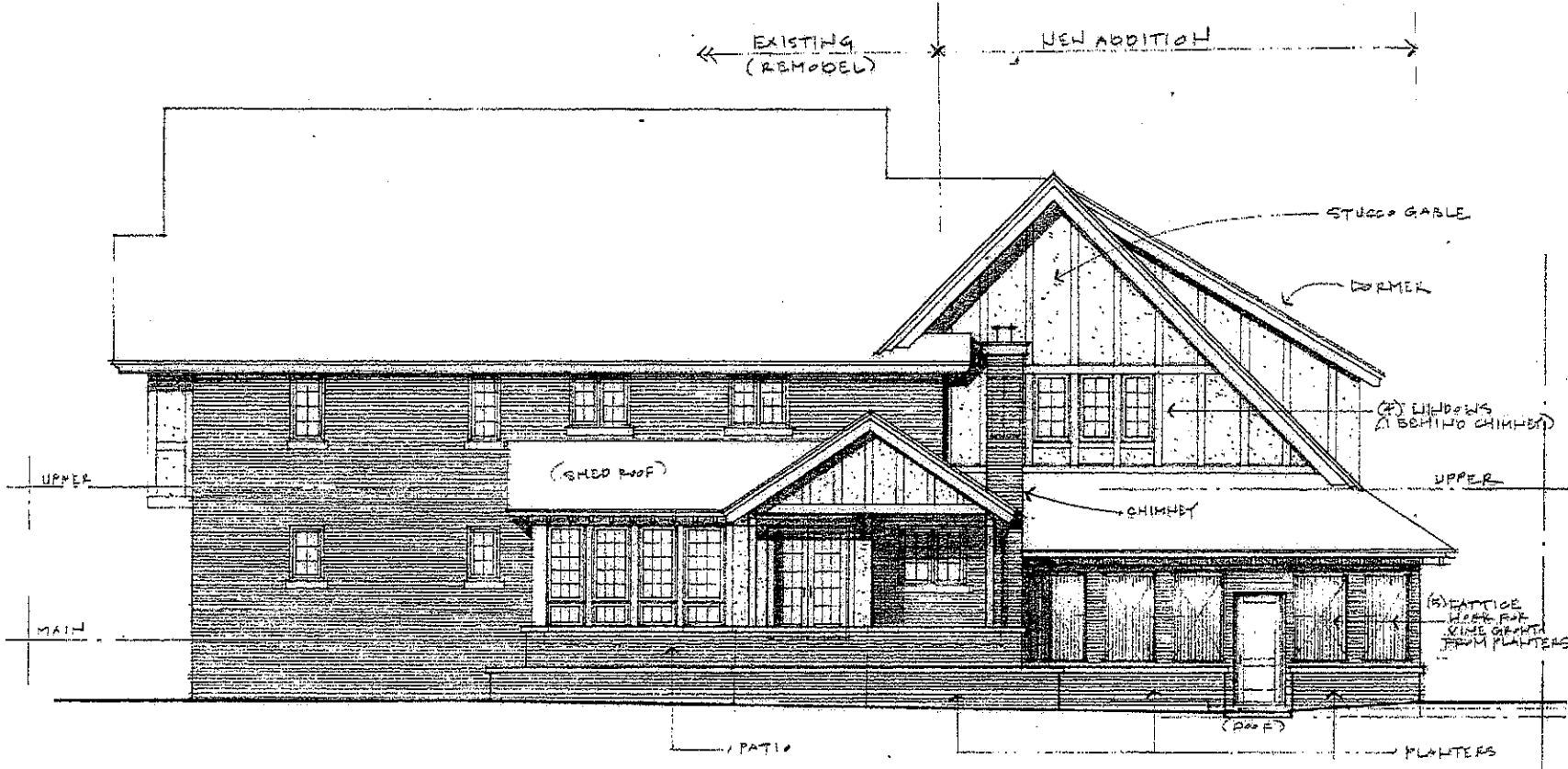
THIS DRAWING SET IS THE PROPERTY OF THE ARCHITECT AND IS NOT TO BE REPRODUCED, COPIED, OR TRANSMITTED IN ANY FORM OR BY ANY MEANS, ELECTRONIC OR MECHANICAL, INCLUDING PHOTOCOPYING, RECORDING, OR BY ANY INFORMATION STORAGE AND RETRIEVAL SYSTEM. ANY UNAUTHORIZED REPRODUCTION OR TRANSMISSION OF THIS DRAWING SET IS STRICTLY PROHIBITED. THE ARCHITECT ASSUMES NO LIABILITY FOR DAMAGES OF ANY KIND, INCLUDING CONSEQUENTIAL DAMAGES, ARISING FROM THE USE OF THIS DRAWING SET. THE ARCHITECT'S LIABILITY IS LIMITED TO THE DESIGN AND CONSTRUCTION OF THE PROJECT. THE ARCHITECT IS NOT RESPONSIBLE FOR THE ACCURACY OF ANY INFORMATION PROVIDED BY OTHERS. THE ARCHITECT'S LIABILITY IS LIMITED TO THE DESIGN AND CONSTRUCTION OF THE PROJECT. THE ARCHITECT IS NOT RESPONSIBLE FOR THE ACCURACY OF ANY INFORMATION PROVIDED BY OTHERS.

Project Number:  
13111  
 Project Architect:  
Paul Baum  
 Drawn By:  
PB  
 Date of Issue:  
11/20/11  
 BUILDER REVIEW  
 SET (ESTIMATE)  
 2-1-12

Sheet No. **A1**



**SAL**  
 ARCHITECTS, INC.  
 MINNEAPOLIS  
 1206 Hennepin Ave. #70  
 Minneapolis, MN 55414  
 TEL: (612) 375-3037  
 FAX: (612) 375-0001  
 STEELWATER  
 903 South Fourth Street  
 Steelwater, MN 55062  
 TEL: (651) 351-0867  
 FAX: (651) 351-2192  
 www.SALArch.com



BACK YARD (SOUTH) ELEVATION  
 1/8" = 1'-0"

Tudor on West Boulevard  
 1602 West Boulevard  
 Rapid City, SD 57702

THIS DOCUMENT IS A PRELIMINARY DESIGN DRAWING. IT IS NOT TO BE USED FOR CONSTRUCTION. THE ARCHITECT ASSUMES NO LIABILITY FOR ANY DAMAGE OR INJURY TO PERSONS OR PROPERTY CAUSED BY THE USE OF THIS DOCUMENT. THE ARCHITECT'S LIABILITY IS LIMITED TO THE PROFESSIONAL SERVICES PROVIDED. THE ARCHITECT IS NOT RESPONSIBLE FOR THE ACCURACY OF ANY INFORMATION PROVIDED BY OTHERS. THE ARCHITECT IS NOT RESPONSIBLE FOR THE ACCURACY OF ANY INFORMATION PROVIDED BY OTHERS.

Project Number:	1111
Project Architect:	Paul Baum
Drawn By:	PS
Date of Issue:	11/20/12
<b>BUILDER REVIEW SET (ESTIMATE)</b>	
	2.1.12
Sheet No.	A1