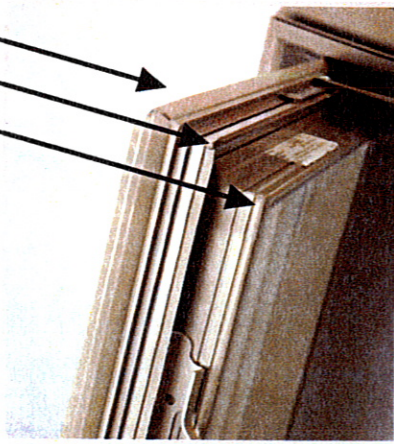


Vinylite Casement and Awning windows come in a wide range of sizes and configurations and can be complemented with geometric and radius shapes. The continuous main frame design gives these windows simple beauty for the view of a lifetime. Smooth operating hinges permit our casement windows to open a full 90 degrees allowing easy cleaning from inside your home.

FEATURES AND BENEFITS

- 3-1/4" thick main frame
- Fusion welded main frame and sash
- Continuous head and sill on multiple units up to 8' widths
- 3/4" warm-edge insulated glass standard
- 3/4" warm-edge insulated glass with Low-E and Argon available
- Easily removable screen standard
- Multi-point locking system
- 90 degree opening range of casement sash
- Egress hardware available
- Washability hardware standard on all units
- Internal grilles available
- Color coordinated hardware
- Available oak, pine, white or almond vinyl veneered extension jamba
- Custom sizing available
- Full complement of special shapes
- Limited lifetime warranty

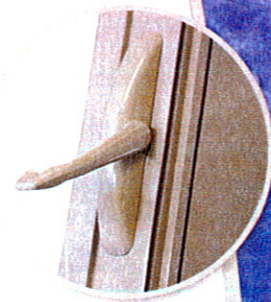
THREE SEALS
FOR MAXIMUM
EFFICIENCY



Available with EZ-Trim Brickmould!

Welded 2" trim with 1" subsill for a traditional appearance. Innovative front installation design with snap in cover. Ideal for easy window replacement.

MULTI-POINT
LOCKING
HARDWARE



FOLDING
HANDLE
ELIMINATES
INTERFERENCE
WITH BLINDS



AVAILABLE COLORS FOR
CASEMENT & AWNING WINDOWS:

○ WHITE

○ ALMOND

○ CLAY

EXTENSION JAMBS
AVAILABLE IN
A VARIETY OF
WOOD SPECIES
OR WITH A LOW
MAINTENANCE
VINYL SURFACE



CONTOURED
PROFILE FOR
TRADITIONAL
LOOK

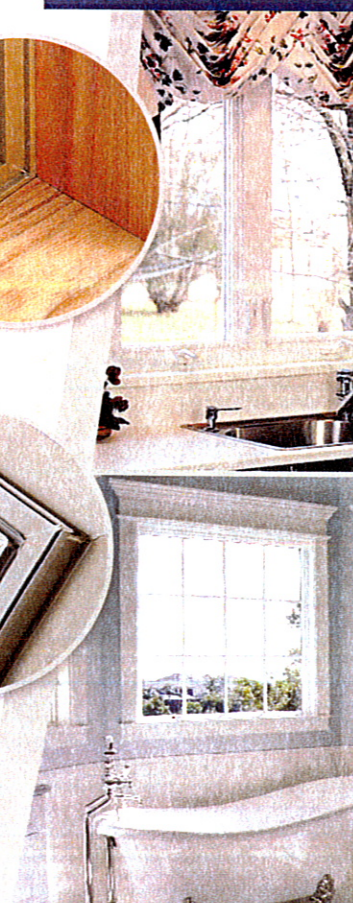


CASEMENT & AWNING WINDOWS

VINYLITE
WINDOWS

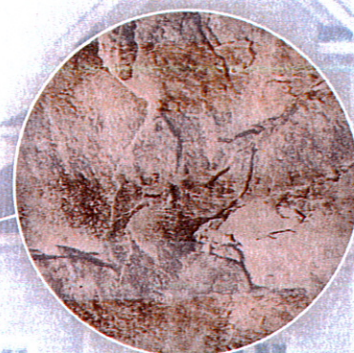
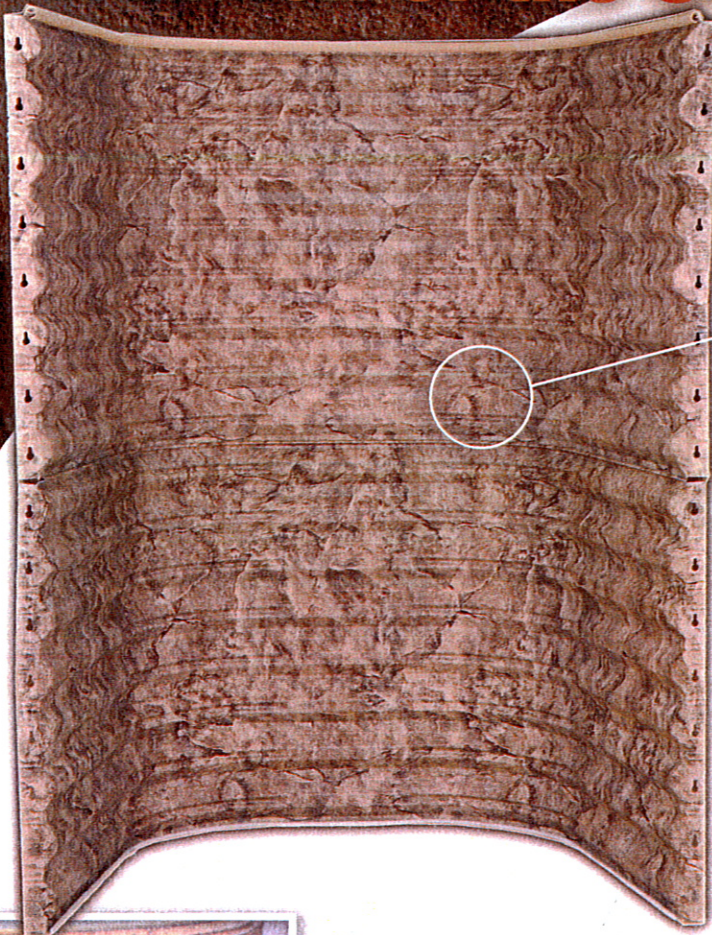


www.vinylite.com



The Look of Natural Stone Window Wells... at a Fraction of the Cost

NEW!
From Boman Kemp



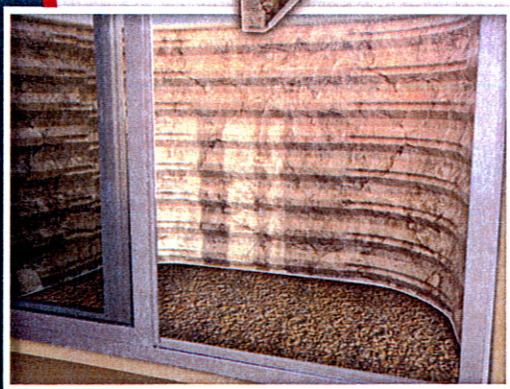
NatraStone™

A Boman Kemp Product

Patent Pending



Approved ESR# 1856



Boman Kemp, the industry leader in basement window systems, is proud to offer an alternative to expensive composite wells. Manufactured from the same 18 Gauge steel as our standard well, the NatraStone™ Window well combines beauty and strength that will please even the most discerning homeowners. Contact your local distributor today for details!



Basement Window Systems

800.733.7886 | www.boman-kemp.com



National
Association
of Homebuilders



Concrete
Foundation
Association

Come see us at these shows!



World of Concrete - Booth N253



NAHB show - Booth S10745



www.stpaulcorrugating.com

Lux-Right

"THE ORIGINAL AREAWALL"

STONEWALL

Innovative Basement
Egress Systems from
the makers of The Original
Areawall

The strength of
steel with the
look of **stacked
stone**

Available at:



GUARDIAN
BUILDING PRODUCTS
DISTRIBUTION

BLACK HAWK, SD

Sizes Available

42"W x 36"P - 48"H

50"W x 36"P - 48"H

60"W x 36"P - 48"H

Covers & ladders
also available.

For pricing contact a sales representative at:

605-787-6751 * 800-247-9663 * FAX 605-787-9799

