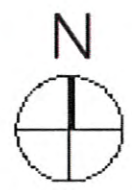


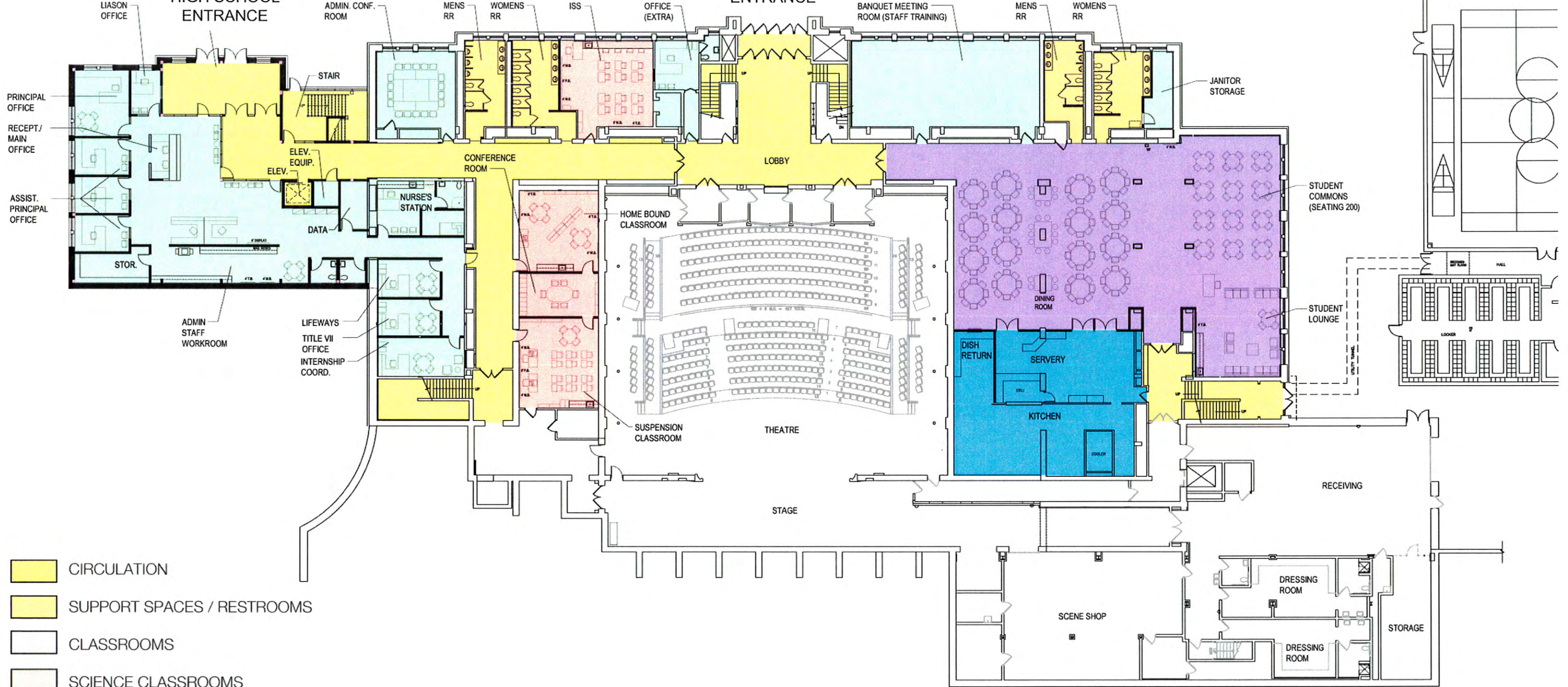
RAPID CITY HIGH SCHOOL  
 RAPID CITY, SOUTH DAKOTA  
 DECEMBER 2, 2011

SITE PLAN  
 NOT TO SCALE



PERFORMING  
ARTS  
ENTRANCE

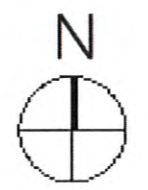
RAPID CITY  
HIGH SCHOOL  
ENTRANCE

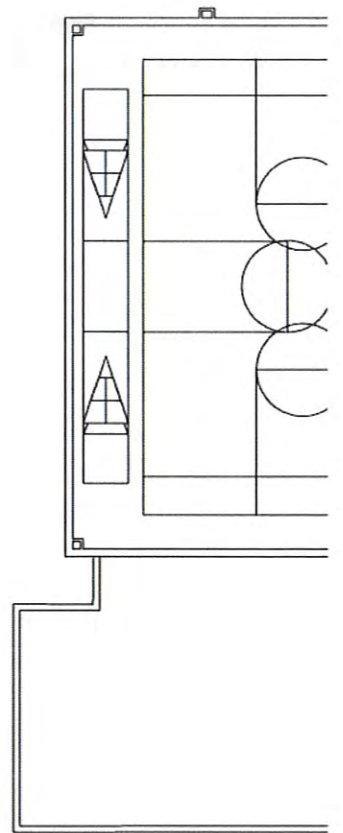
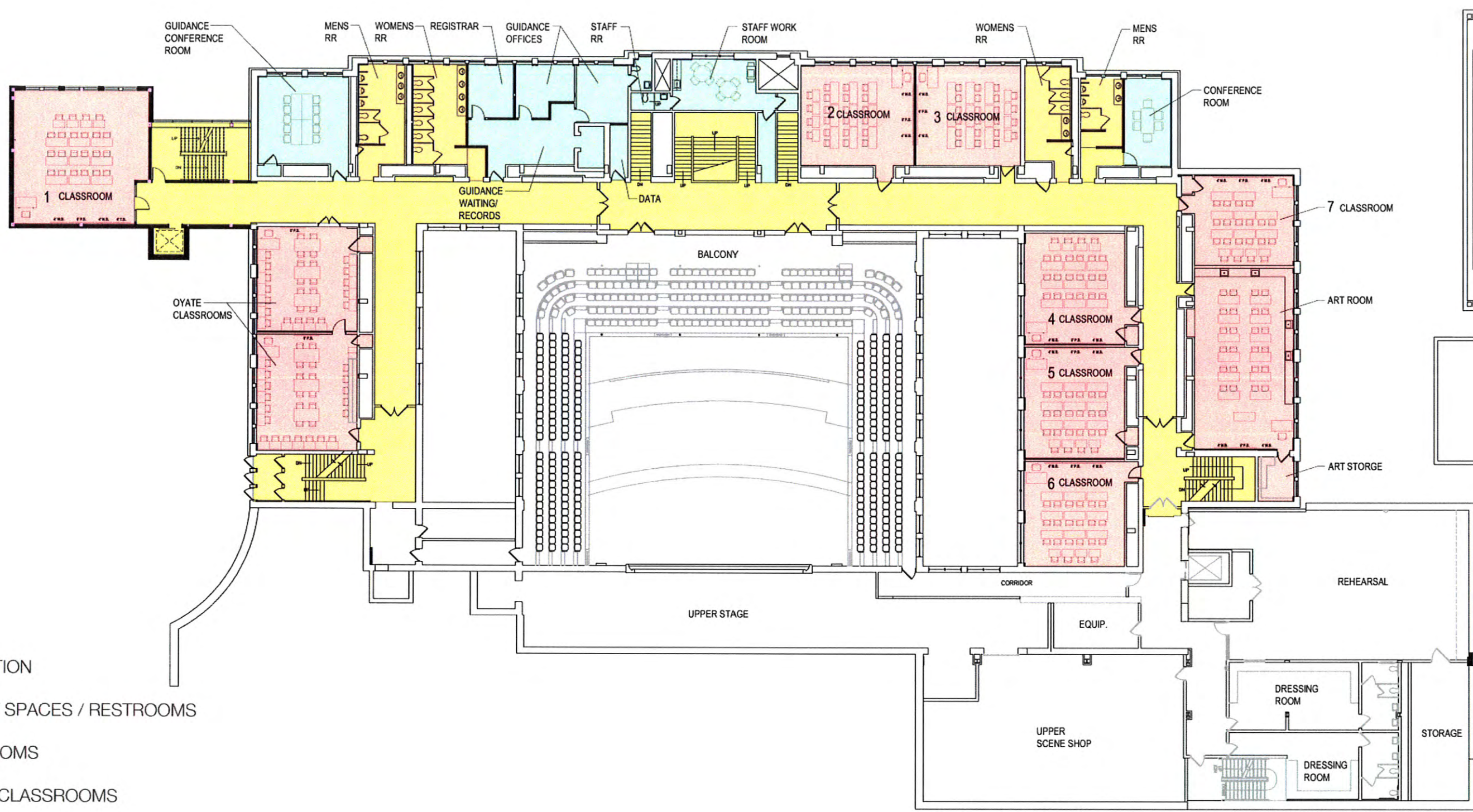


- CIRCULATION
- SUPPORT SPACES / RESTROOMS
- CLASSROOMS
- SCIENCE CLASSROOMS
- OFFICE / ADMINISTRATION
- KITCHEN / SERVERY
- STUDENT COMMONS / LOUNGE

RAPID CITY HIGH SCHOOL  
RAPID CITY, SOUTH DAKOTA  
DECEMBER 2, 2011

FIRST FLOOR PLAN  
NOT TO SCALE

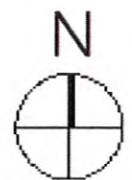


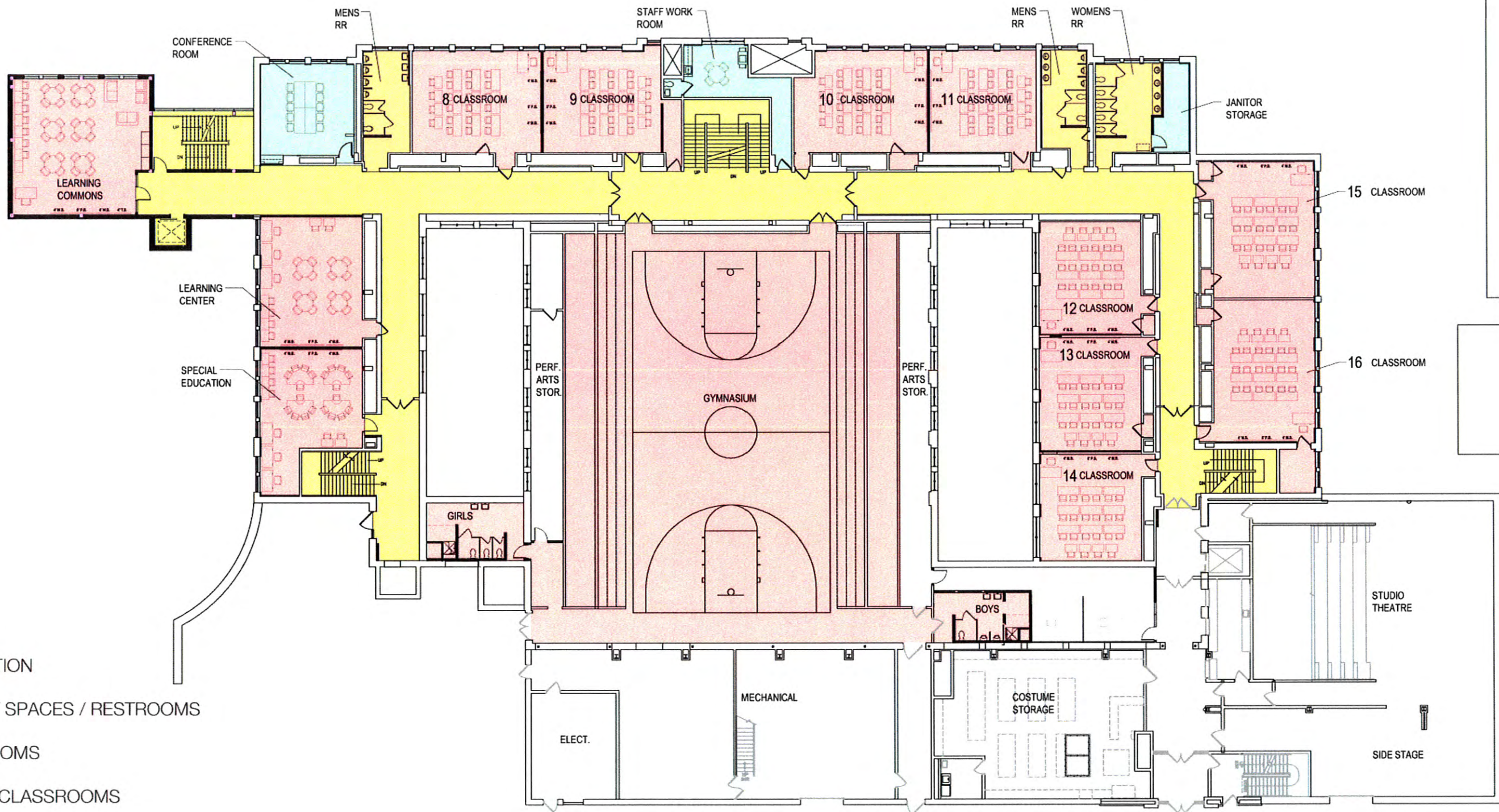


- CIRCULATION
- SUPPORT SPACES / RESTROOMS
- CLASSROOMS
- SCIENCE CLASSROOMS
- OFFICE / ADMINISTRATION
- KITCHEN / SERVERY
- STUDENT COMMONS / LOUNGE

RAPID CITY HIGH SCHOOL  
 RAPID CITY, SOUTH DAKOTA  
 DECEMBER 2, 2011

SECOND FLOOR  
 NOT TO SCALE

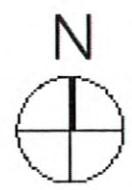


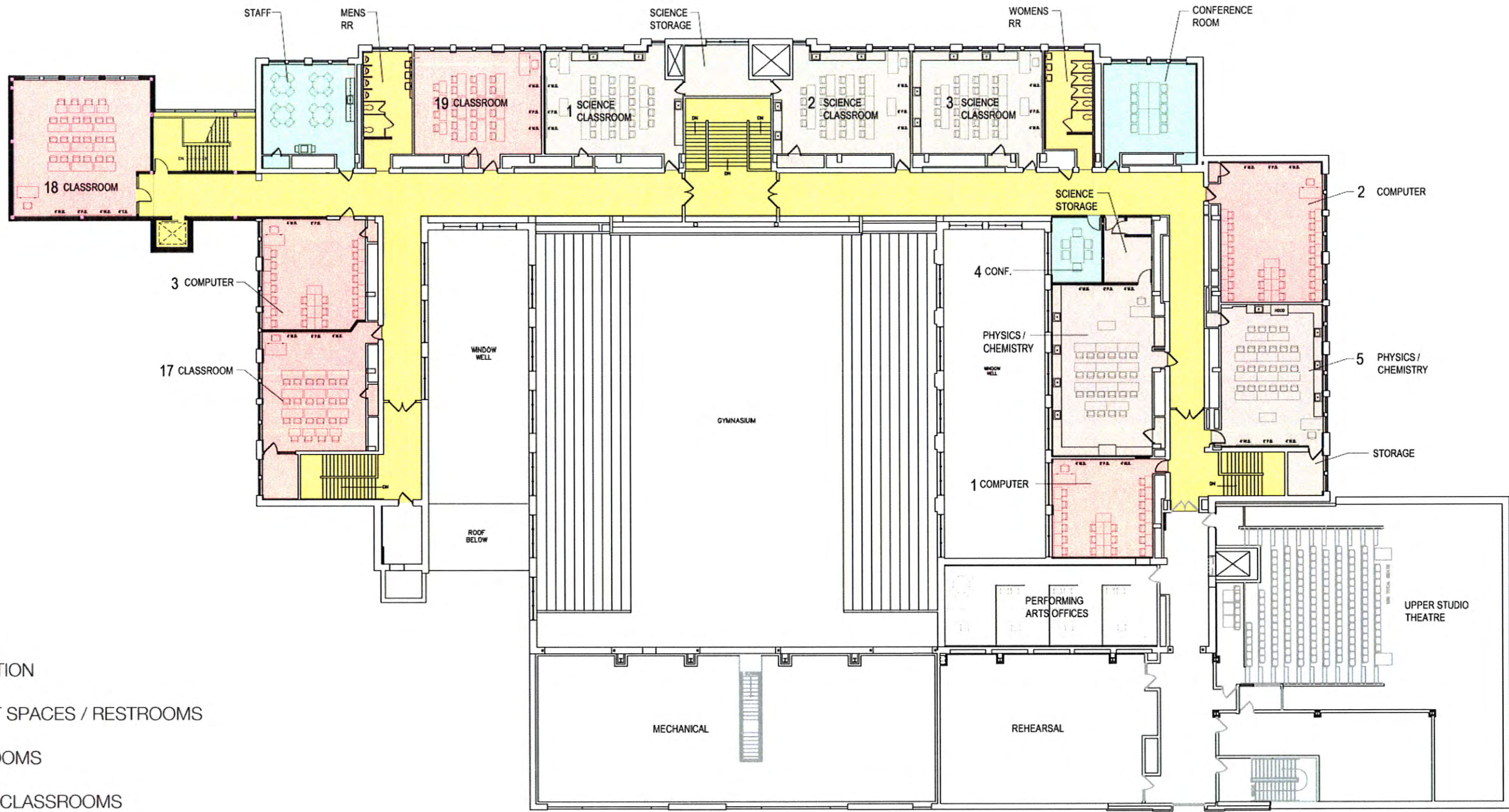


- CIRCULATION
- SUPPORT SPACES / RESTROOMS
- CLASSROOMS
- SCIENCE CLASSROOMS
- OFFICE / ADMINISTRATION
- KITCHEN / SERVERY
- STUDENT COMMONS / LOUNGE

RAPID CITY HIGH SCHOOL  
 RAPID CITY, SOUTH DAKOTA  
 DECEMBER 2, 2011

THIRD FLOOR  
 NOT TO SCALE

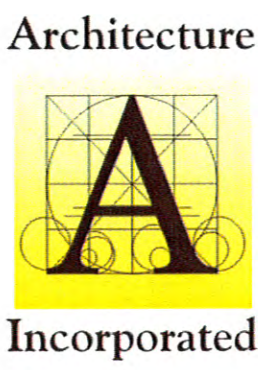
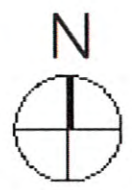




- CIRCULATION
- SUPPORT SPACES / RESTROOMS
- CLASSROOMS
- SCIENCE CLASSROOMS
- OFFICE / ADMINISTRATION
- KITCHEN / SERVERY
- STUDENT COMMONS / LOUNGE

RAPID CITY HIGH SCHOOL  
 RAPID CITY, SOUTH DAKOTA  
 DECEMBER 2, 2011

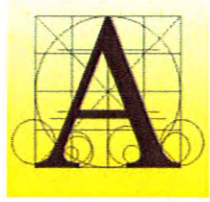
FOURTH FLOOR  
 NOT TO SCALE



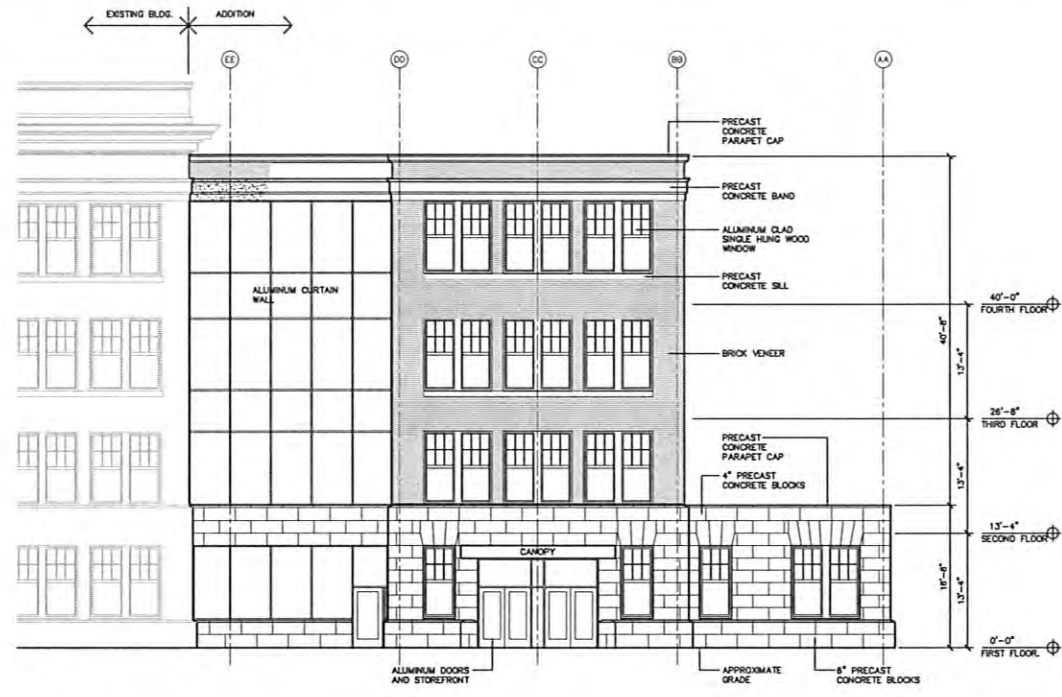


RAPID CITY HIGH SCHOOL  
RAPID CITY, SOUTH DAKOTA  
DECEMBER 2, 2011

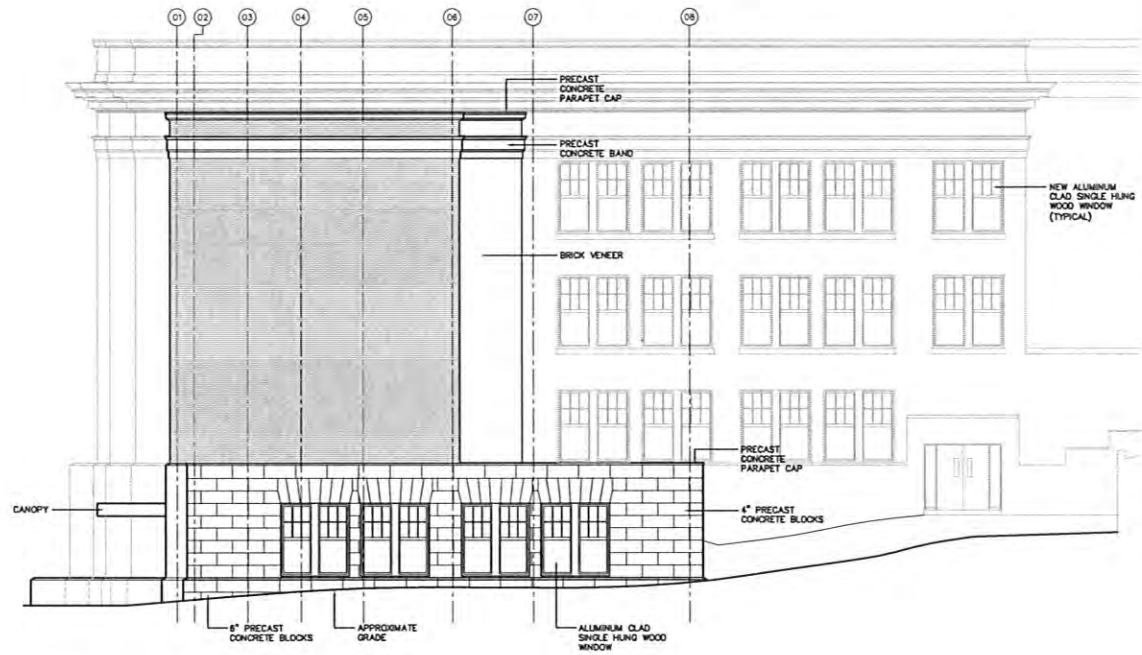
Architecture



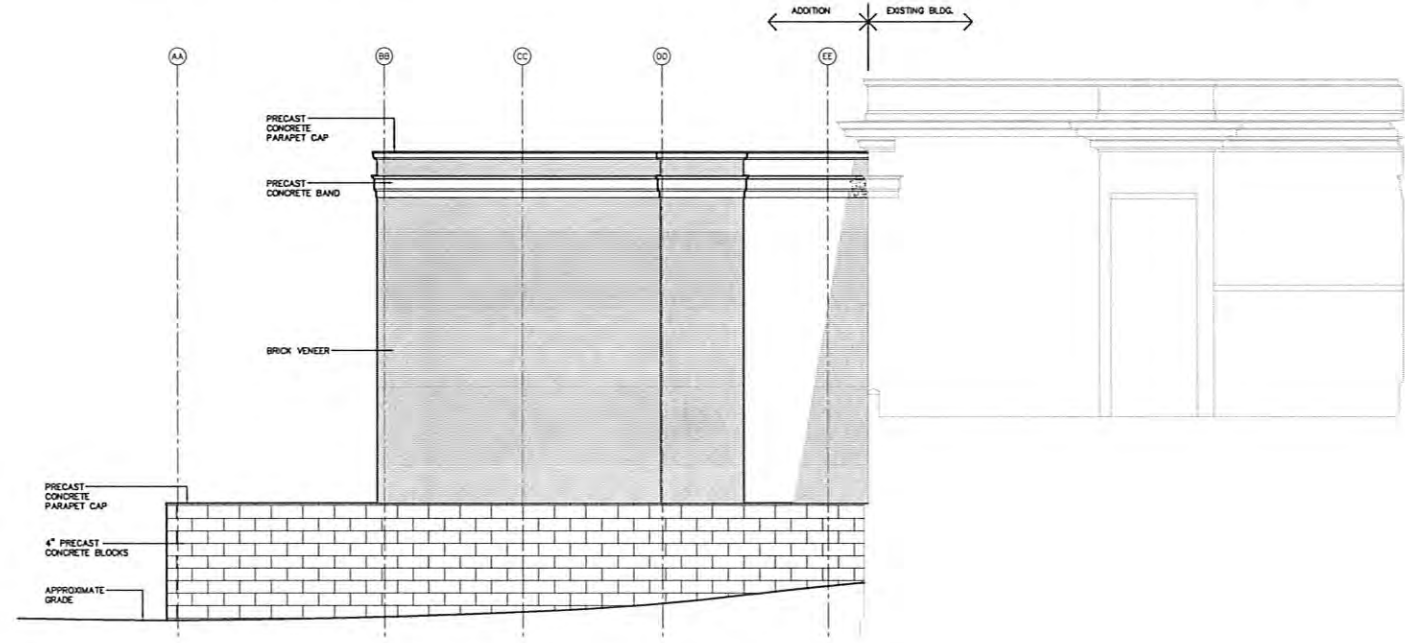
Incorporated



**A NORTH ELEVATION**  
SCALE 1/8" = 1'-0"

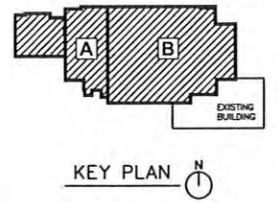


**B WEST ELEVATION**  
SCALE 1/8" = 1'-0"



**C SOUTH ELEVATION**  
SCALE 1/8" = 1'-0"

- GENERAL NOTES:**
- SEE ABBREVIATIONS LISTING ON SHEET 1.1.
  - SEE SPECIFICATIONS FOR ADDITIONAL INFORMATION.
  - GENERAL CONTRACTOR SHALL VERIFY EXISTING CONDITIONS AND DIMENSIONS AT THE JOB SITE. REPORT DISCREPANCIES TO THE ARCHITECT.
  - GENERAL CONTRACTOR IS RESPONSIBLE FOR PROTECTION OF ALL INTERIOR FINISHES AND EQUIPMENT THAT ARE TO REMAIN.
  - COORDINATE REMOVAL AND REPLACEMENT OF CONCRETE FLOOR SLABS, FLOOR COVERINGS, WALLS AND CEILINGS WITH MECHANICAL AND ELECTRICAL DRAWINGS.
  - PROVIDE DUST PROTECTION BETWEEN WORK AREAS AND THE REST OF THE BUILDING THROUGHOUT DEMOLITION AND CONSTRUCTION. GENERAL CONTRACTOR SHALL REPAIR EXISTING FINISHES AFTER REMOVAL OF DUST PARTITIONS.
  - SEE MECHANICAL AND ELECTRICAL DRAWINGS FOR ADDITIONAL INFORMATION.
  - MAINTAIN REQUIRED EGRESS PER AUTHORITIES HAVING JURISDICTION.
  - SEE DRAWING SHEET X.1 FOR WALL TYPES.
  - SEE DRAWING SHEET X.1 FOR DOOR AND FRAME TYPES, DOOR SCHEDULE.
  - SEE DRAWING SHEET X.1 FOR WINDOW TYPES.
  - SEE DRAWING SHEET X.1 FOR ENLARGED TOILET ROOM PLANS.
  - SEE DRAWING SHEET X.1 FOR FLOOR TRANSITION DETAILS.



**BUILDING ENCLOSURE**  
**5.1**

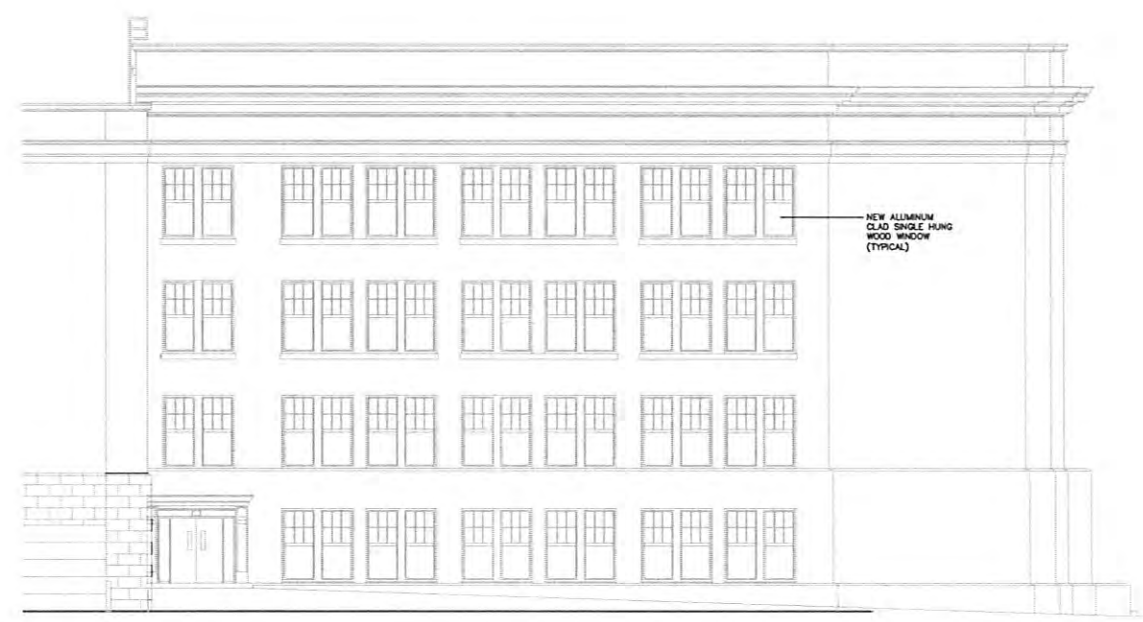
project	RAPID CITY HIGH SCHOOL REMODEL	
number	0210.2247.00	revision
date	DECEMBER 7, 2011	
drawn	DOT/KEB	checked KEB

PROGRESS PRINT  
NOT FOR CONSTRUCTION  
DECEMBER 7, 2011

**Architecture Incorporated**  
415 South Main Avenue  
P.O. Box 2140  
Sioux Falls, South Dakota 57101-2140  
phone: (605)339-1711 fax: 339-2331  
909 St Joseph Street, Suite 202  
P.O. Box 8047  
Rapid City, South Dakota 57709  
phone: (605)721-1156 fax: 721-4114

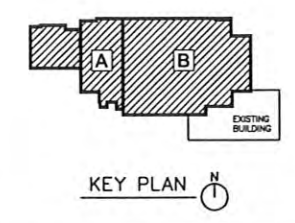


**A** NORTH ELEVATION  
SCALE 1/8" = 1'-0"



**B** EAST ELEVATION  
SCALE 1/8" = 1'-0"

- GENERAL NOTES:**
- A. SEE ABBREVIATIONS LISTING ON SHEET 1.1.
  - B. SEE SPECIFICATIONS FOR ADDITIONAL INFORMATION.
  - C. GENERAL CONTRACTOR SHALL VERIFY EXISTING CONDITIONS AND DIMENSIONS AT THE JOB SITE. REPORT DISCREPANCIES TO THE ARCHITECT.
  - D. GENERAL CONTRACTOR IS RESPONSIBLE FOR PROTECTION OF ALL INTERIOR FINISHES AND EQUIPMENT THAT ARE TO REMAIN.
  - E. COORDINATE REMOVAL AND REPLACEMENT OF CONCRETE FLOOR SLABS, FLOOR COVERINGS, WALLS AND CEILINGS WITH MECHANICAL AND ELECTRICAL DRAWINGS.
  - F. PROVIDE DUST PROTECTION BETWEEN WORK AREAS AND THE REST OF THE BUILDING THROUGHOUT DEMOLITION AND CONSTRUCTION. GENERAL CONTRACTOR SHALL REPAIR EXISTING FINISHES AFTER REMOVAL OF DUST PARTITIONS.
  - G. SEE MECHANICAL AND ELECTRICAL DRAWINGS FOR ADDITIONAL INFORMATION.
  - H. MAINTAIN REQUIRED EGRESS PER AUTHORITIES HAVING JURISDICTION.
  - I. SEE DRAWING SHEET X.1 FOR WALL TYPES.
  - J. SEE DRAWING SHEET X.1 FOR DOOR AND FRAME TYPES, DOOR SCHEDULE.
  - K. SEE DRAWING SHEET X.1 FOR WINDOW TYPES.
  - L. SEE DRAWING SHEET X.1 FOR ENLARGED TOILET ROOM PLANS.
  - M. SEE DRAWING SHEET X.1 FOR FLOOR TRANSITION DETAILS.



**BUILDING ENCLOSURE**  
**5.2**

project RAPID CITY HIGH SCHOOL REMODEL  
 number 0210.2247.10 revision \_\_\_\_\_  
 date DECEMBER 7, 2011  
 drawn DOT/KEB checked KEB

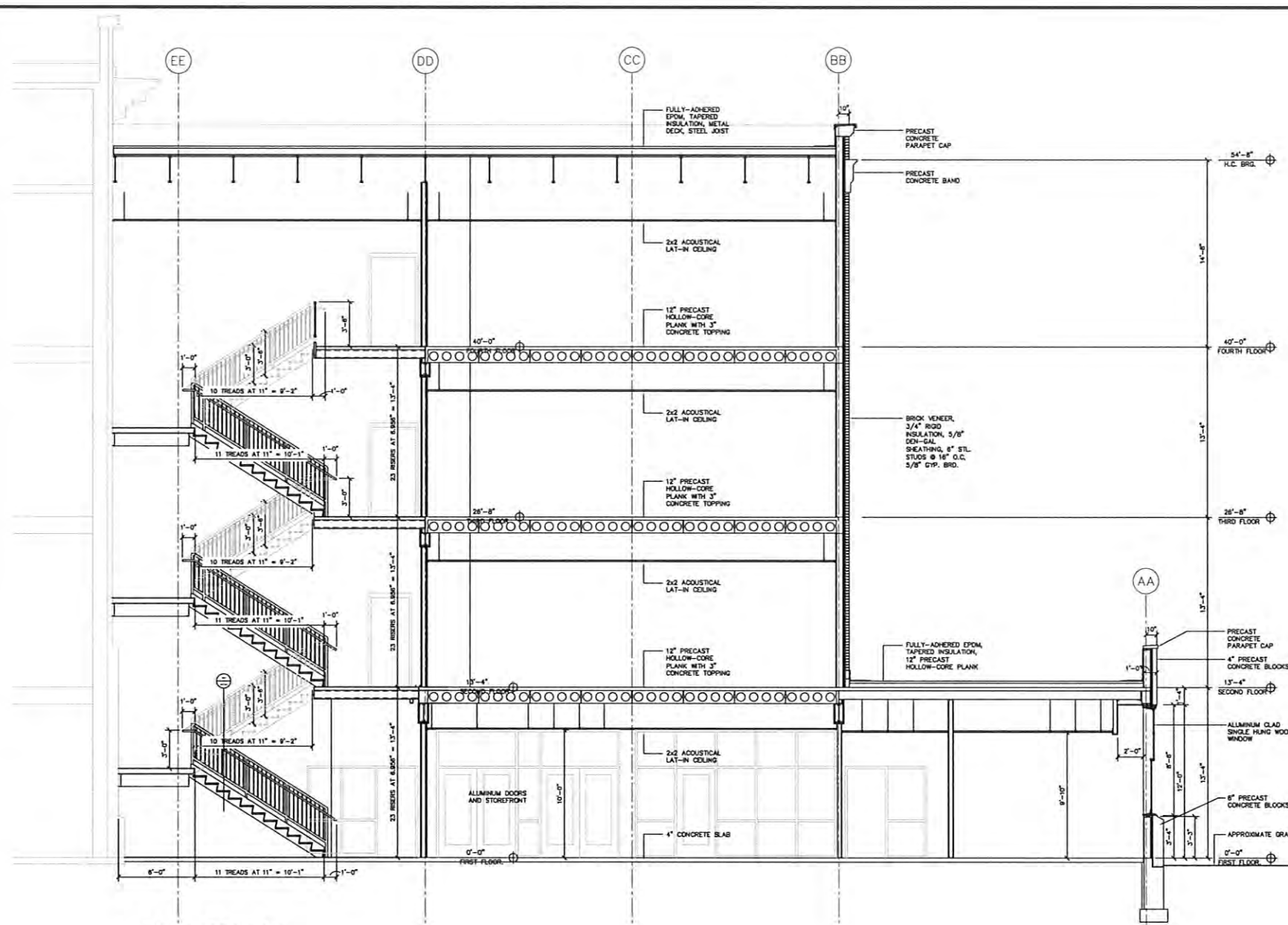
PROGRESS PRINT  
NOT FOR CONSTRUCTION  
DECEMBER 7, 2011

**Architecture Incorporated**

415 South Main Avenue  
 P.O. Box 2140  
 Sioux Falls, South Dakota 57101-2140  
 phone: (605)339-1711 fax: 339-2331

909 St Joseph Street, Suite 202  
 P.O. Box 8047  
 Rapid City, South Dakota 57709  
 phone: (605)721-1158 fax: 721-4114

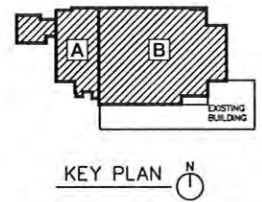




**A STAIR SECTION**  
SCALE 1/4" = 1'-0"

- GENERAL NOTES:**
- A. SEE ABBREVIATIONS LISTING ON SHEET 1.1.
  - B. SEE SPECIFICATIONS FOR ADDITIONAL INFORMATION.
  - C. GENERAL CONTRACTOR SHALL VERIFY EXISTING CONDITIONS AND DIMENSIONS AT THE JOB SITE. REPORT DISCREPANCIES TO THE ARCHITECT.
  - D. GENERAL CONTRACTOR IS RESPONSIBLE FOR PROTECTION OF ALL INTERIOR FINISHES AND EQUIPMENT THAT ARE TO REMAIN.
  - E. COORDINATE REMOVAL AND REPLACEMENT OF CONCRETE FLOOR SLABS, FLOOR COVERINGS, WALLS AND CEILINGS WITH MECHANICAL AND ELECTRICAL DRAWINGS.
  - F. PROVIDE DUST PROTECTION BETWEEN WORK AREAS AND THE REST OF THE BUILDING THROUGHOUT DEMOLITION AND CONSTRUCTION. GENERAL CONTRACTOR SHALL REPAIR EXISTING FINISHES AFTER REMOVAL OF DUST PARTITIONS.
  - G. SEE MECHANICAL AND ELECTRICAL DRAWINGS FOR ADDITIONAL INFORMATION.
  - H. MAINTAIN REQUIRED EGRESS PER AUTHORITIES HAVING JURISDICTION.
  - I. SEE DRAWING SHEET X.1 FOR WALL TYPES.
  - J. SEE DRAWING SHEET X.1 FOR DOOR AND FRAME TYPES, DOOR SCHEDULE.
  - K. SEE DRAWING SHEET X.1 FOR WINDOW TYPES.
  - L. SEE DRAWING SHEET X.1 FOR ENLARGED TOILET ROOM PLANS.
  - M. SEE DRAWING SHEET X.1 FOR FLOOR TRANSITION DETAILS.

PROGRESS PRINT  
NOT FOR CONSTRUCTION  
DECEMBER 7, 2011



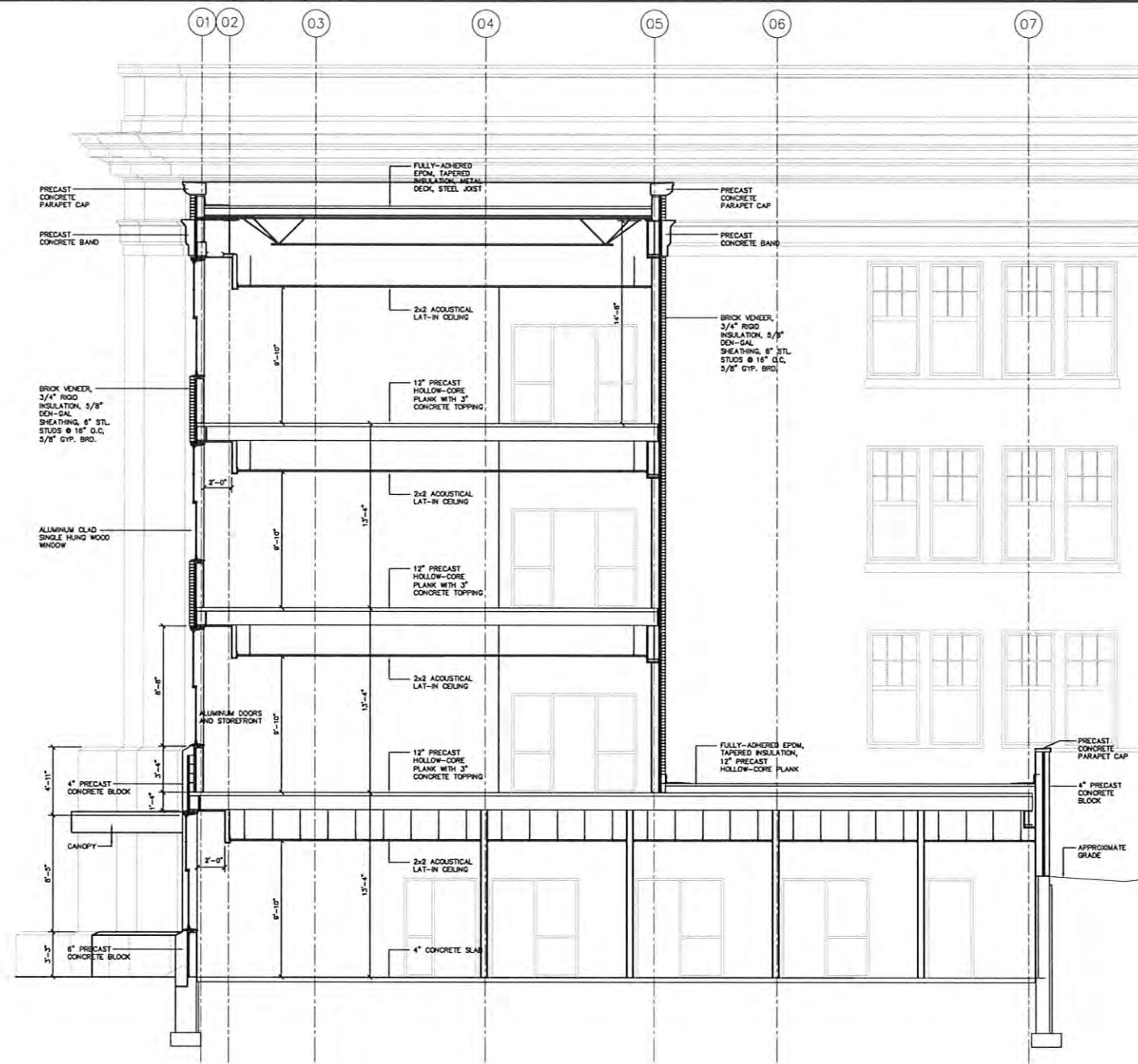
**BUILDING ENCLOSURE**  
**5.3**

project	RAPID CITY HIGH SCHOOL REMODEL	revision	
number	0210.2247.10	date	DECEMBER 7, 2011
drawn	_DOT/KSB	checked	_KSB

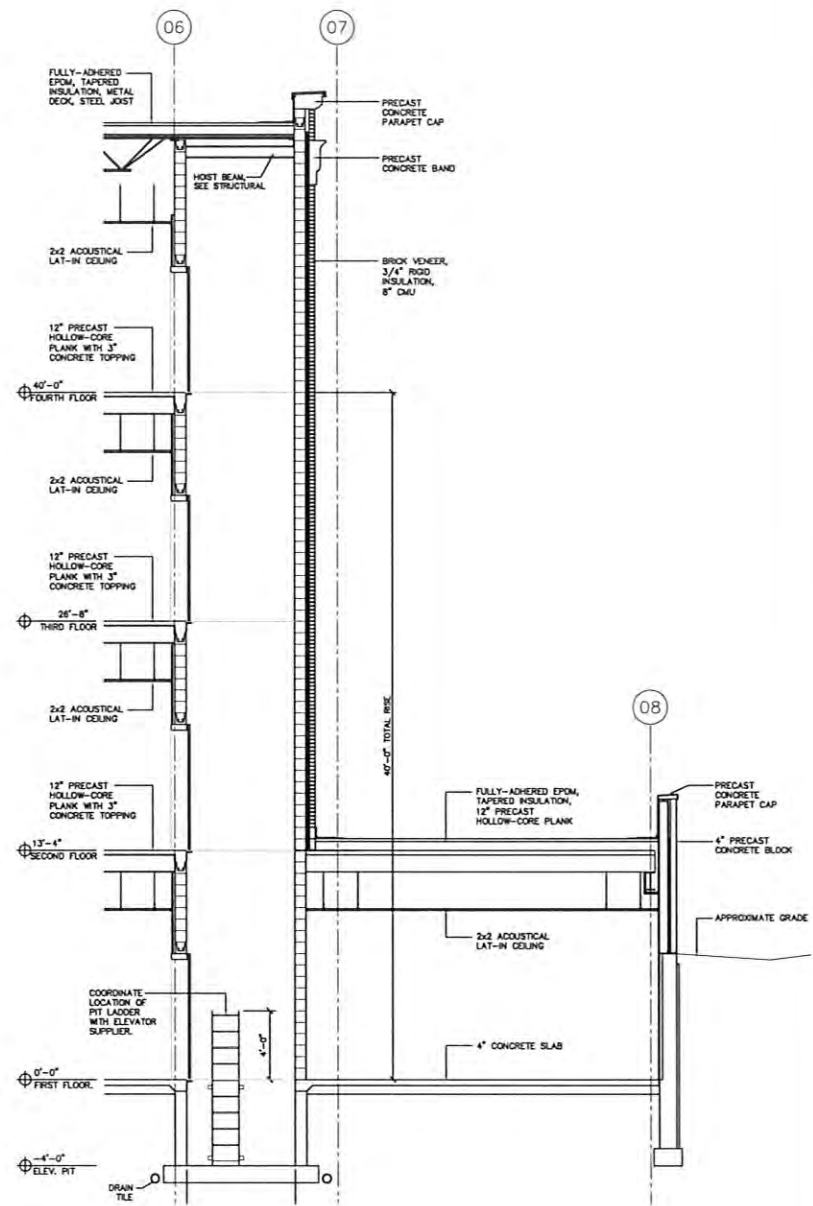
**Architecture Incorporated**

415 South Main Avenue  
P.O. Box 2140  
Sioux Falls, South Dakota 57101-2140  
phone: (605)339-1711 fax: 339-2331

909 St. Joseph Street, Suite 202  
P.O. Box 8047  
Rapid City, South Dakota 57709  
phone: (605)721-1156 fax: 721-4114



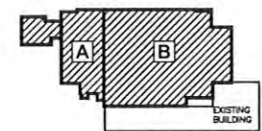
**A BUILDING SECTION**  
SCALE 1/4" = 1'-0"



**B ELEVATOR SECTION**  
SCALE 1/4" = 1'-0"

- GENERAL NOTES:**
- SEE ABBREVIATIONS LISTING ON SHEET 1.1.
  - SEE SPECIFICATIONS FOR ADDITIONAL INFORMATION.
  - GENERAL CONTRACTOR SHALL VERIFY EXISTING CONDITIONS AND DIMENSIONS AT THE JOB SITE. REPORT DISCREPANCIES TO THE ARCHITECT.
  - GENERAL CONTRACTOR IS RESPONSIBLE FOR PROTECTION OF ALL INTERIOR FINISHES AND EQUIPMENT THAT ARE TO REMAIN.
  - COORDINATE REMOVAL AND REPLACEMENT OF CONCRETE FLOOR SLABS, FLOOR COVERINGS, WALLS AND CEILINGS WITH MECHANICAL, AND ELECTRICAL DRAWINGS.
  - PROVIDE DUST PROTECTION BETWEEN WORK AREAS AND THE REST OF THE BUILDING THROUGHOUT DEMOLITION AND CONSTRUCTION. GENERAL CONTRACTOR SHALL REPAIR EXISTING FINISHES AFTER REMOVAL OF DUST PARTITIONS.
  - SEE MECHANICAL AND ELECTRICAL DRAWINGS FOR ADDITIONAL INFORMATION.
  - MAINTAIN REQUIRED EGRESS PER AUTHORITIES HAVING JURISDICTION.
  - SEE DRAWING SHEET X.1 FOR WALL TYPES.
  - SEE DRAWING SHEET X.1 FOR DOOR AND FRAME TYPES, DOOR SCHEDULE.
  - SEE DRAWING SHEET X.1 FOR WINDOW TYPES.
  - SEE DRAWING SHEET X.1 FOR ENLARGED TOILET ROOM PLANS.
  - SEE DRAWING SHEET X.1 FOR FLOOR TRANSITION DETAILS.

PROGRESS PRINT  
NOT FOR CONSTRUCTION  
DECEMBER 7, 2011



KEY PLAN

BUILDING ENCLOSURE

**5.4**

project: RAPID CITY HIGH SCHOOL REMODEL  
number: 2010.2247.10 revision: \_\_\_\_\_  
date: DECEMBER 7, 2011  
drawn: DGT/MSB checked: KCB

Architecture Incorporated

415 South Main Avenue  
P.O. Box 2140  
Sioux Falls, South Dakota 57101-2140  
phone: (605)339-1711 fax: 339-2331  
909 St Joseph Street, Suite 202  
P.O. Box 8047  
Rapid City, South Dakota 57709  
phone: (605)721-1158 fax: 721-4114

