

# FIRST FLOOR

TYPE OF CONSTRUCTION: III-B

FIRST FLOOR OCCUPANCY GROUP: 'B' (EXISTING BUILDING) AND 'M' FOR THIS TENANT SPACE  
SEPARATION REQUIRED: 0 HOURS BETWEEN 'B' AND EITHER 'M' (IBC 2006 508.3.3)

'B' OCCUPANCY (LAWYER) = 3,175 N.S.F.  
'B' OCCUPANCY (PRIVATE OFFICE) = 299 N.S.F.  
'M' OCCUPANCY (TENANT) = 1,585 N.S.F.  
TOTAL FLOOR AREA = 5,059 N.S.F. FIRST FLOOR ONLY

OCCUPANT LOAD:  
'M' OCCUPANT LOAD (TENANT) = 1,585 N.S.F./30 = 53 OCCUPANTS  
(DESIGN OCCUPANT LOAD = 49 OCCUPANTS)  
TOTAL DESIGN OCCUPANT LOAD = 49 OCCUPANTS

EGRESS WIDTH:  
OTHER: 'M' OCCUPANCY (TENANT):  $54 \times 0.15" = 8.1"$   
ACTUAL EGRESS WIDTH = 6'-0"

EXITS:  
'M' OCCUPANCY (TENANT): TWO EXITS REQUIRED

FIRE-RESISTANCE RATING REQUIREMENTS (TYPE III-B)  
STRUCTURAL FRAME = 0 HOURS  
NON-BEARING WALLS (INTERIOR) = 0 HOURS  
FLOOR CONSTRUCTION = 0 HOURS  
OPENING PROTECTION IN EXTERIOR WALLS = N/A  
(IBC SECTION 3407.1 AND WITH FIRE SUPPRESSION SYSTEM THROUGHOUT BUILDING)

CORRIDOR TRAVEL DISTANCE:  
DEAD END = LESS THAN 50'

FIRE SPRINKLER: YES

KARMA TENANT FINISH  
529 MAIN STREET  
RAPID CITY, SD 57701

Staline No. 7  
ARCHITECTS  
1000 W. 10th St.  
RAPID CITY, SD 57701  
Tel: 605.342.1111  
Fax: 605.342.1112  
www.staline.com

PROJECT NUMBER  
09-017

DATE  
AUGUST 10, 2011

DRAWN BY  
E. KLISTER

DISK ID.  
09-017\_0.10 - 0.11.dwg

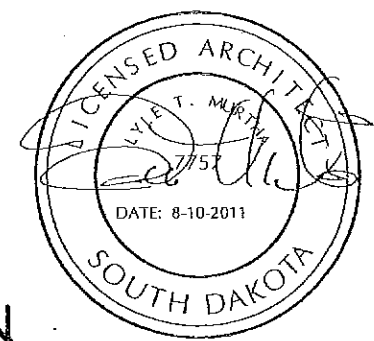
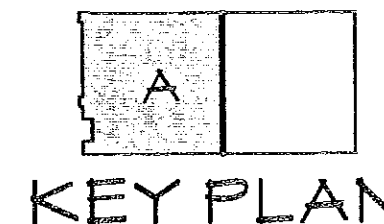
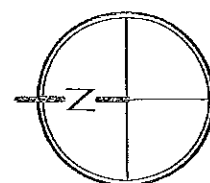
SHEET TITLE  
PARTIAL CODE REVIEW PLAN - AREA 'A'

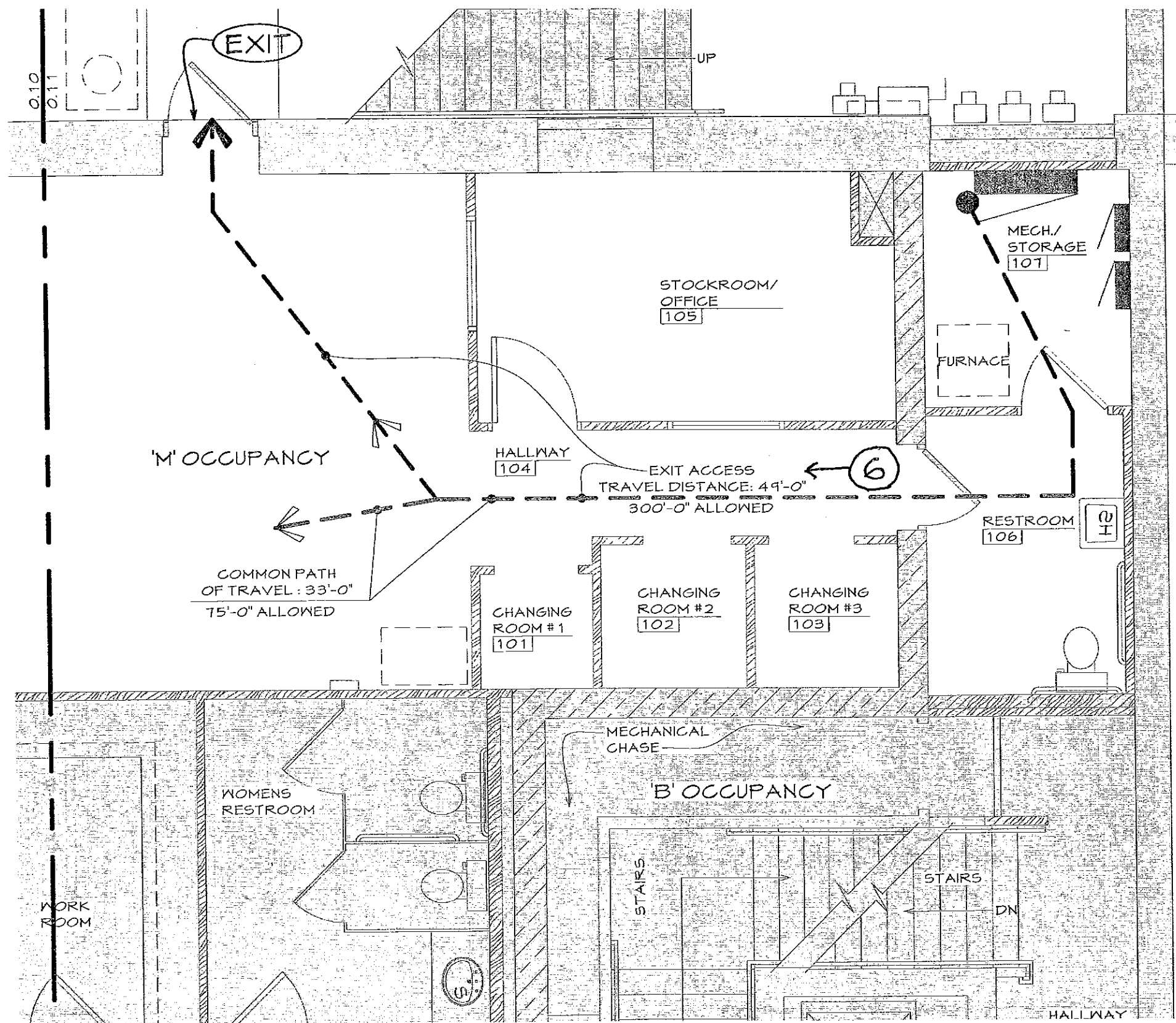
SHEET NUMBER

0.10

## PARTIAL CODE REVIEW PLAN - AREA 'A'

SCALE 1/4" = 1'-0"





# FIRST FLOOR

TYPE OF CONSTRUCTION: III-B  
 FIRST FLOOR OCCUPANCY GROUP: 'B' (EXISTING BUILDING) AND 'M' FOR THIS TENANT SPACE  
 SEPARATION REQUIRED: 0 HOURS BETWEEN 'B' AND EITHER 'M' (IBC 2006 508.3.3)

'B' OCCUPANCY (LAWYER) = 3,175 N.S.F.  
 'B' OCCUPANCY (PRIVATE OFFICE) = 299 N.S.F.  
 'M' OCCUPANCY (TENANT) = 1,585 N.S.F.  
 TOTAL FLOOR AREA = 5,059 N.S.F. FIRST FLOOR ONLY

OCCUPANT LOAD:  
 'M' OCCUPANT LOAD (TENANT) = 1,585 N.S.F./30 = 53 OCCUPANTS  
 (DESIGN OCCUPANT LOAD = 49 OCCUPANTS)  
 TOTAL DESIGN OCCUPANT LOAD = 49 OCCUPANTS

EGRESS WIDTH:  
 OTHER: 'M' OCCUPANCY (TENANT):  $54 \times 0.15 = 8.1"$   
 ACTUAL EGRESS WIDTH = 6'-0"

EXITS:  
 'M' OCCUPANCY (TENANT): TWO EXITS REQUIRED

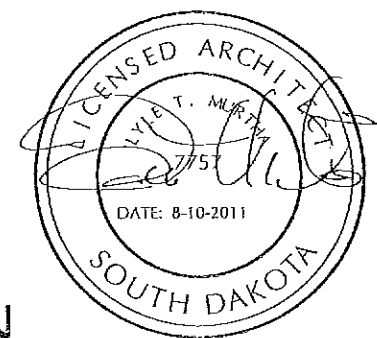
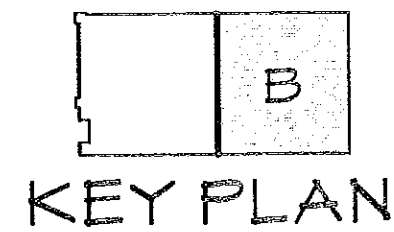
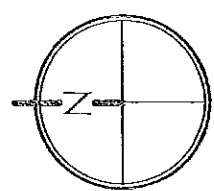
FIRE-RESISTANCE RATING REQUIREMENTS (TYPE III-B)  
 STRUCTURAL FRAME = 0 HOURS  
 NON-BEARING WALLS (INTERIOR) = 0 HOURS  
 FLOOR CONSTRUCTION = 0 HOURS  
 OPENING PROTECTION IN EXTERIOR WALLS = N/A  
 (IBC SECTION 3407.1 AND WITH FIRE SUPPRESSION SYSTEM THROUGHOUT BUILDING)

CORRIDOR TRAVEL DISTANCE:  
 DEAD END = LESS THAN 50'

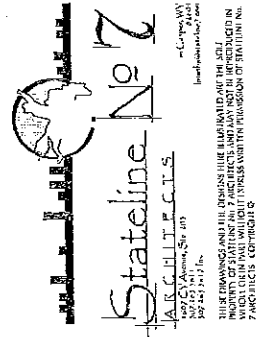
FIRE SPRINKLER: YES

## PARTIAL CODE REVIEW PLAN - AREA 'B'

SCALE 1/4" = 1'-0"



KARMA TENANT FINISH  
 529 MAIN STREET  
 RAPID CITY, SD 57701



PROJECT NUMBER  
 09-017

DATE  
 AUGUST 10, 2011

DRAWN BY  
 E. KLISTER

DISK ID.  
 09-017\_0.10-0.11.dwg

SHEET TITLE  
 PARTIAL CODE REVIEW PLAN - AREA 'B'

SHEET NUMBER

0.11