

RAPID CITY GARAGE

PERMIT SET

PROJECT TEAM

BUILDING OWNER
Stainle LLC
P.O. Box 6087, Rapid City SD 57701
(605) 343-7117

ARCHITECT OF RECORD
AcV2 architecture
116 Ninth St, Rapid City SD 57701
(605) 484-6071

KITCHEN/RESTAURANT CONSULTANT
Institutions Services, Inc.
1221 N. B Avenue
Sioux Falls SD 57104
(605) 399-3931

DRAWING INDEX

GENERAL	
G0.1	PROJECT INFO, SUMMARY OF WORK + DRAWING INDEX
ARCHITECTURAL	
A0.1	CODE ANALYSIS
A1.1	SITE PLAN
A1.2	MAIN FLOOR PLAN
A1.3	BASEMENT FLOOR PLAN
A2.1	EXTERIOR ELEVATIONS
A4.1	ENLARGED BATHROOM PLAN
A4.2	EXTERIOR EXTERIOR RAMPS + STAIRS DETAILS

PROJECT MAP

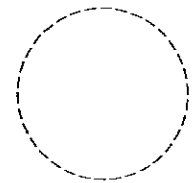


RAPID CITY GARAGE
Rapid City SD

PROJECT #1008
STATUS Permit Set

AcV2

116 Ninth Street, Rapid City SD 57701
(605) 484-6071

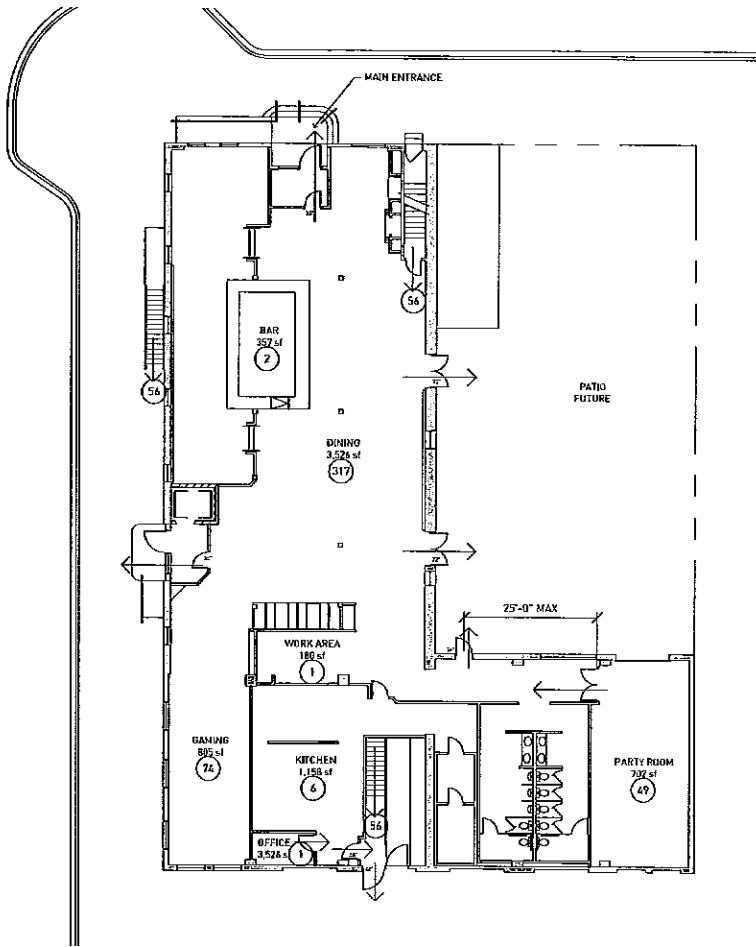


All drawings and material contained herein
© 2011 AcV2 Architecture

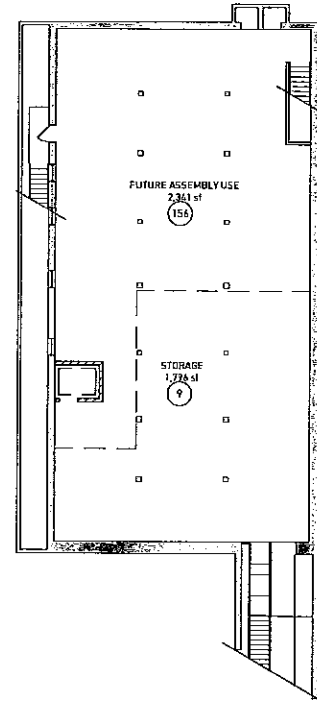
PROJECT INFO, SUMMARY OF
WORK + DRAWING INDEX

G0.1

17 March 2011



1 MAIN FLOOR: CODE EGRESS PLAN
SCALE 1/16" = 1'-0"



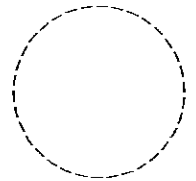
2 BASEMENT FLOOR: CODE EGRESS PLAN
SCALE 1/16" = 1'-0"

RAPID CITY GARAGE

Rapid City SD

PROJECT #1008
STATUS Permit Set

AcV2
1116 Ninth Street, Rapid City SD 57701
(605) 484-6071

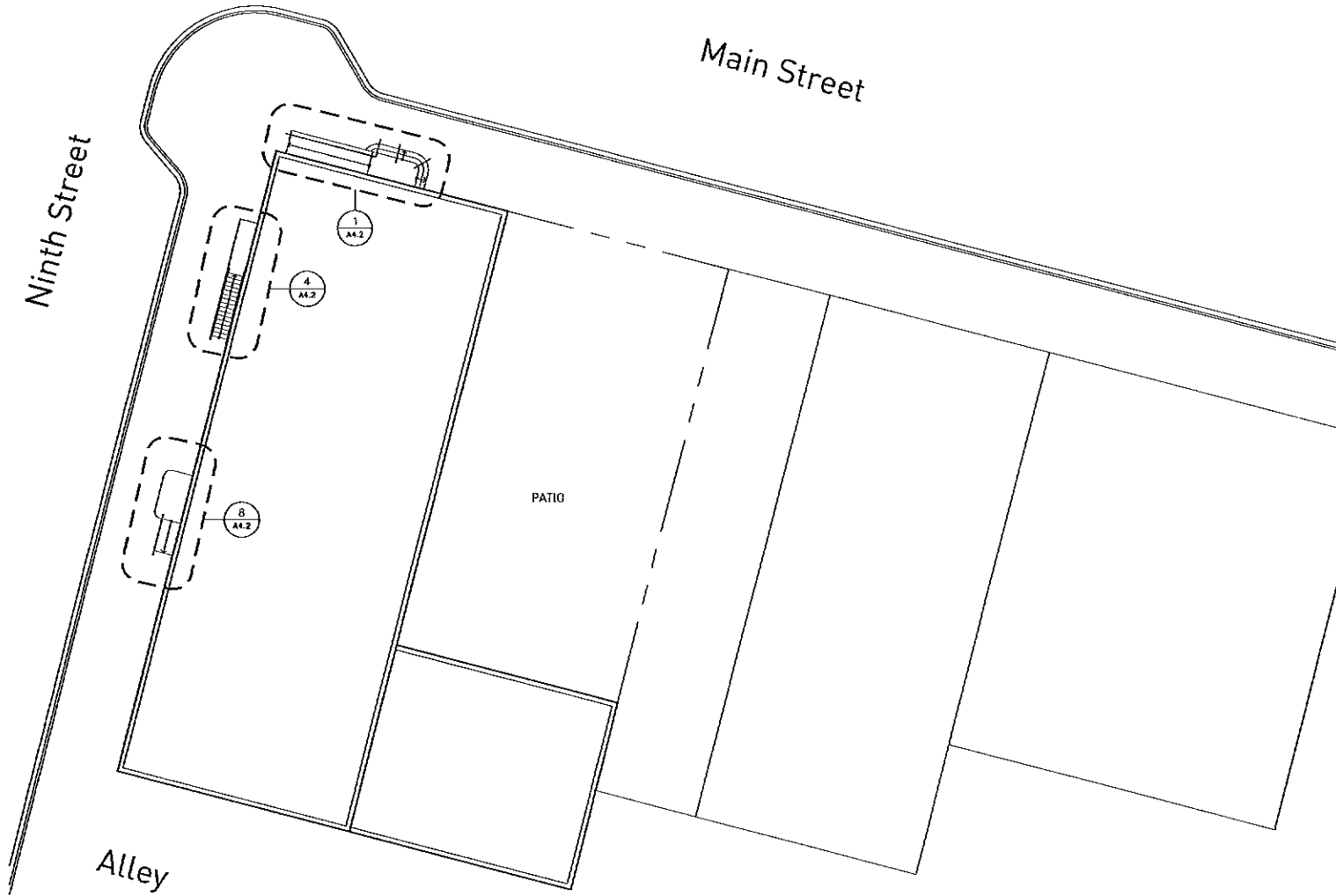


All drawings and material contained herein
© 2011 AcV2 Architecture

CODE ANALYSIS

A0.1

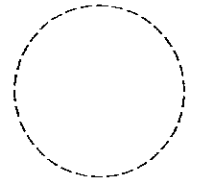
17 March 2011



RAPID CITY GARAGE
Rapid City SD

PROJECT #1008
STATUS Permit Set

AcV2
1116 Ninth Street, Rapid City SD 57701
(605) 484-6071



All drawings and material contained herein
© 2011 AcV2 Architecture

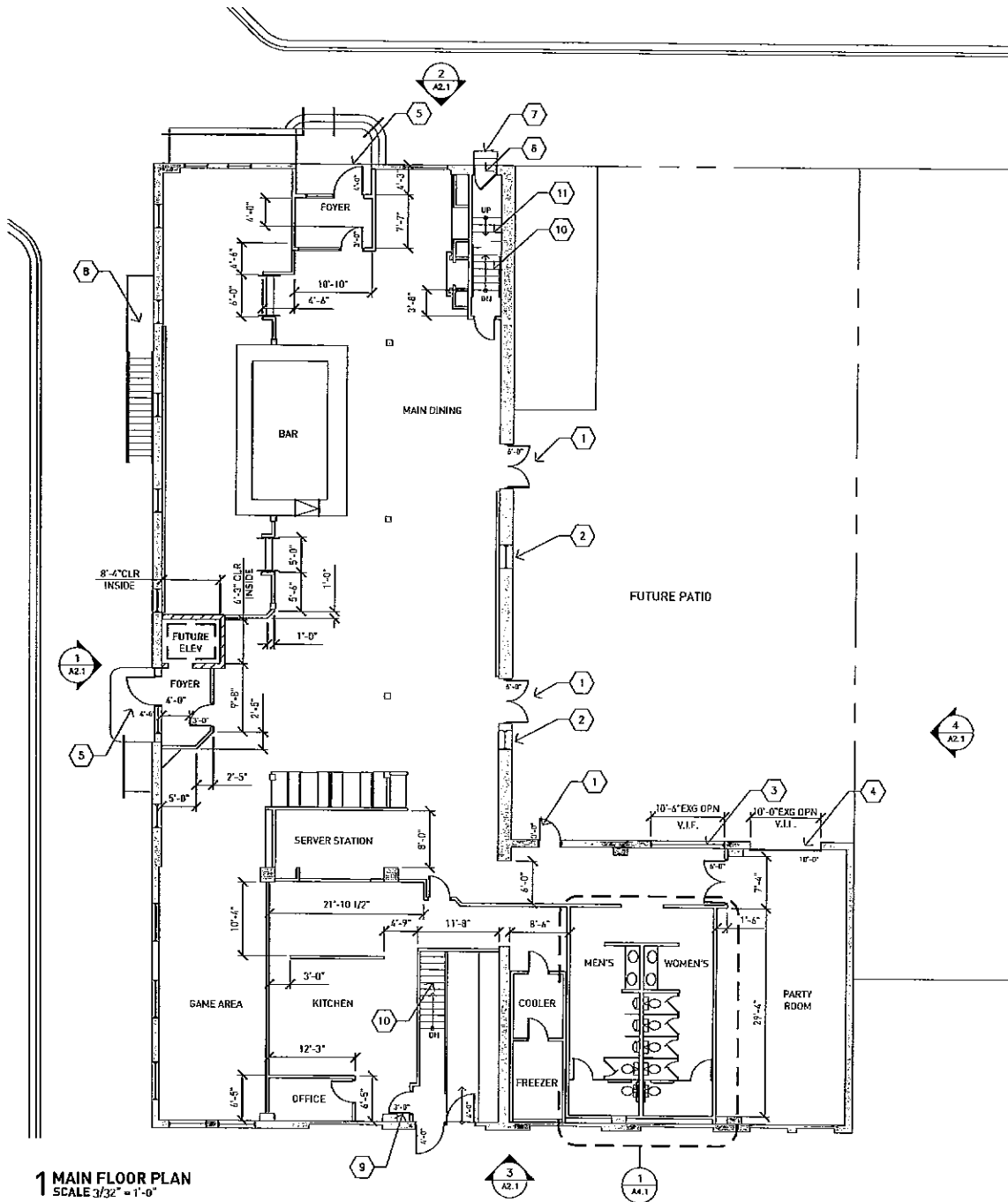
SITE PLAN

A1.1

17 March 2011

1 SITE PLAN
SCALE 1/16" = 1'-0"





1 MAIN FLOOR PLAN
SCALE 3/32" = 1'-0"

KEYNOTES

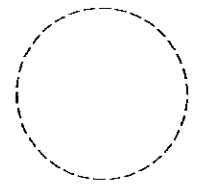
1. REMOVE EXG ALUM-FRAME + GLASS DOOR ASSEMBLY. REPLACE W/ NEW DOOR IN EXG OPENING.
2. REMOVE EXG DOOR, BLOCK IN OPENING, INSTALL NEW WOV TO MATCH EXG HISTORIC WDS
3. INSTALL NEW ALUM-FRAME + GLASS STOREFRONT FRAME IN EXG OPENING.
4. INSTALL NEW OVERHEAD ALUM-FRAME + GLASS DOOR IN EXG OPENING.
5. INSTALL NEW WOOD + GLASS ENTRANCE DOOR ASSEMBLY, SIM TO HISTORIC CARRIAGE DOORS, IN EXG OPENING.
6. INSTALL NEW WOOD + GLASS DOOR TO SECOND FLOOR IN EXG OPENING.
7. EXG HISTORIC STAIRS TO REMAIN.
8. PHASE 2: EXTERIOR ENTRANCE TO BASEMENT.
9. DOOR W/ ELECTROMAGNETIC HOLD OPEN DEVICE
10. NEW STAIRS
11. EXO STAIRS TO SECOND FLOOR

RAPID CITY GARAGE

Rapid City SD

PROJECT #1008
STATUS Permit Set

AcV2
1116 Ninth Street, Rapid City SD 57701
(605) 484-6071

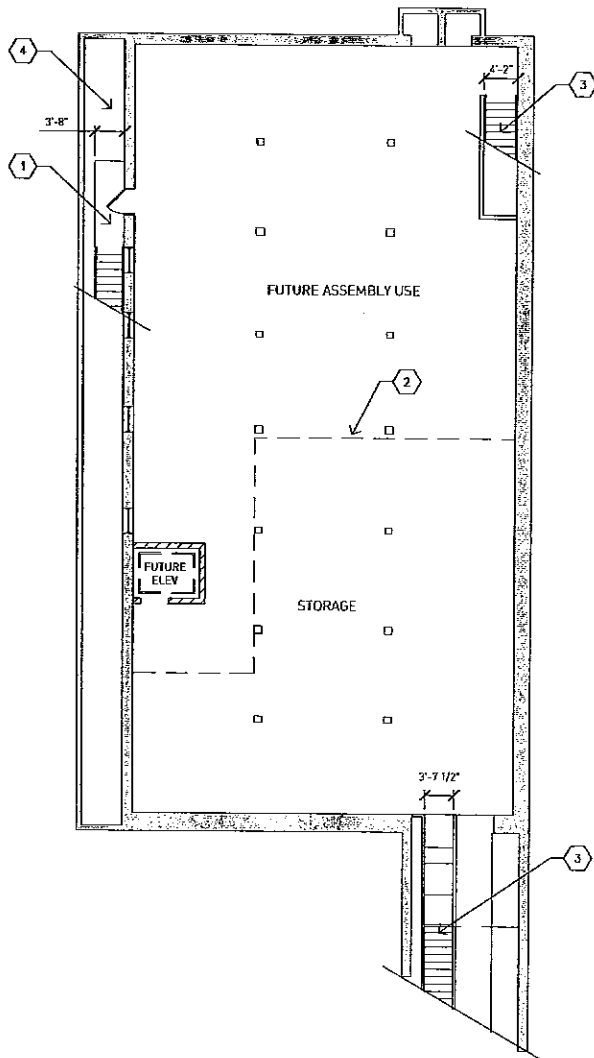


All drawings and material contained herein
© 2011 AcV2 Architecture

MAIN FLOOR

A1.2

17 March 2011



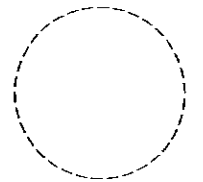
KEYNOTES

- 1. PHASE 2- EXTERIOR ENTRANCE TO BASEMENT.
- 2. FUTURE WALL
- 3. NEW STAIRS
- 4. EXG LIGHT WELL

RAPID CITY GARAGE
Rapid City SD

PROJECT #1008
STATUS Permit Set

AcV2
1116 Ninth Street, Rapid City SD 57701
(605) 484-6071



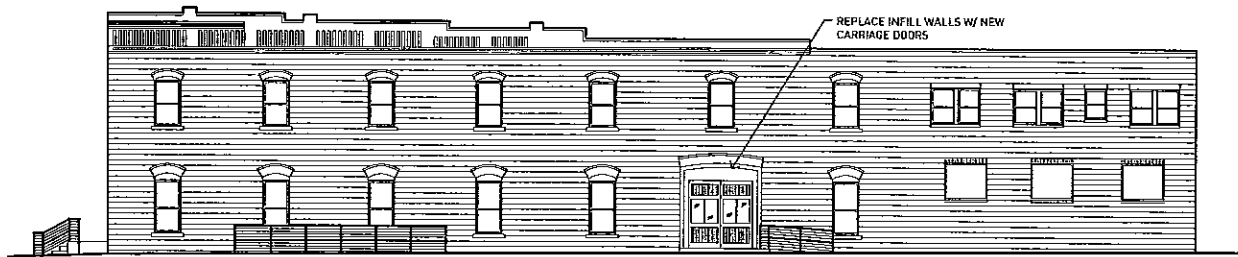
All drawings and material contained herein
© 2011 AcV2 Architecture

BASEMENT FLOOR PLAN

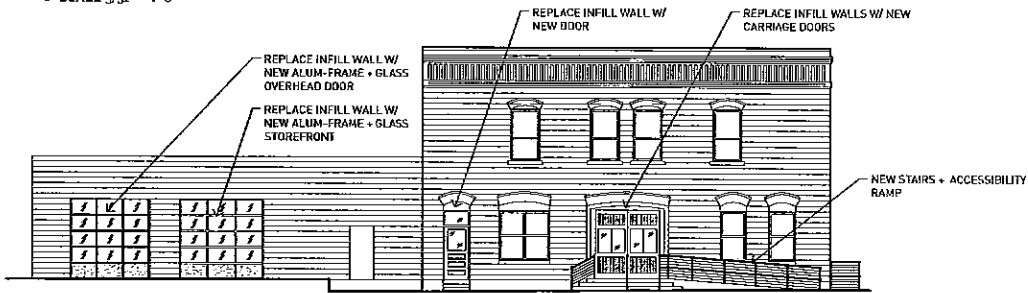
A1.3

17 March 2011

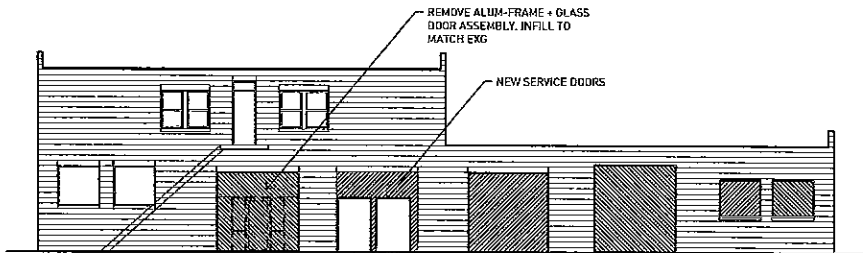
1 BASEMENT FLOOR PLAN
SCALE 3/32" = 1'-0"



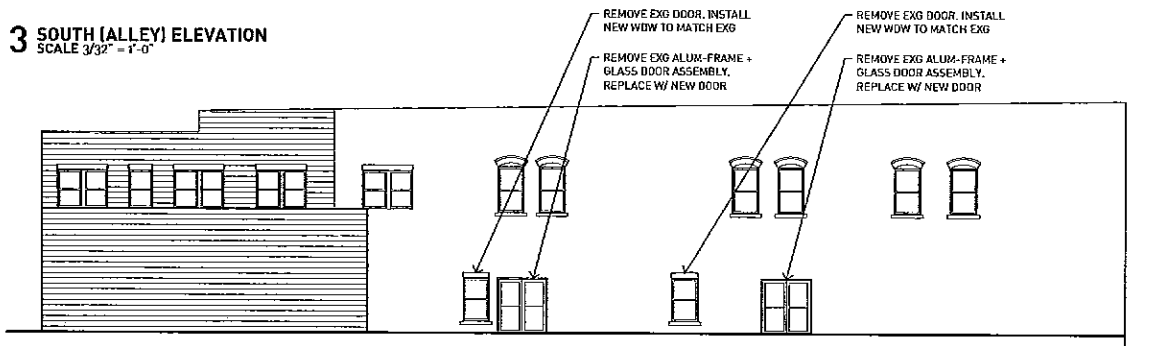
1 WEST (NINTH STREET) ELEVATION
SCALE 3/32" = 1'-0"



2 (NORTH) MAIN STREET ELEVATION
SCALE 3/32" = 1'-0"



3 SOUTH (ALLEY) ELEVATION
SCALE 3/32" = 1'-0"



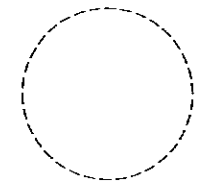
4 EAST (PATIO) ELEVATION
SCALE 3/32" = 1'-0"

RAPID CITY GARAGE

Rapid City SD

PROJECT #1008
STATUS Permit Set

AcV2
1116 Ninth Street, Rapid City SD 57701
(605) 484-6071



All drawings and material contained herein
© 2011 AcV2 Architecture

EXTERIOR ELEVATIONS

A2.1

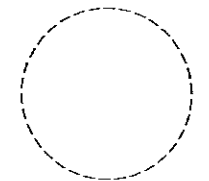
17 March 2011

RAPID CITY GARAGE

Rapid City SD

PROJECT #1008
STATUS Permit Set

AcV2
1116 Ninth Street, Rapid City SD 57701
(605) 484-6071

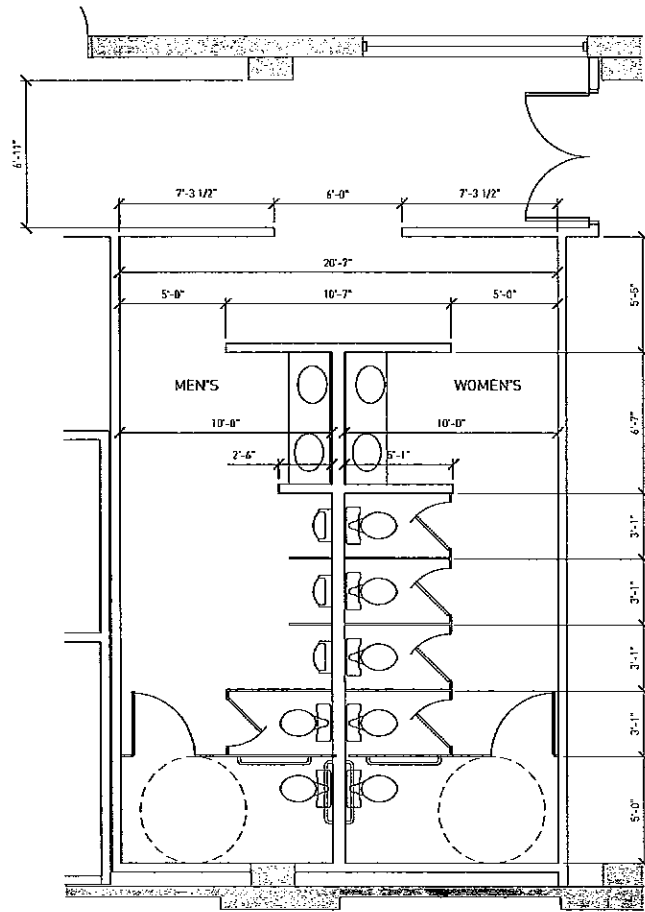


All drawings and material contained herein
© 2011 AcV2 Architecture

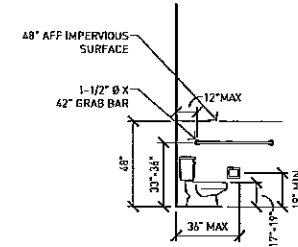
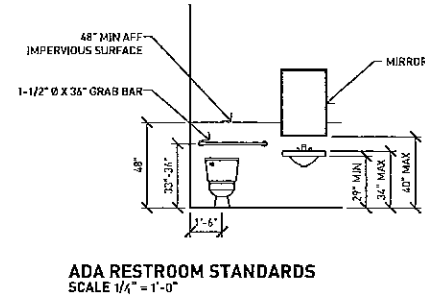
ENLARGED BATHROOM PLANS

A4.1

17 March 2011



1 ENLARGED MEN'S / WOMEN'S
SCALE 1/4" = 1'-0"



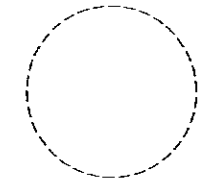
RAPID CITY GARAGE

Rapid City SD

PROJECT #1008
STATUS Permit Set

AcV2

1116 Ninth Street, Rapid City SD 57701
(605) 484-6071

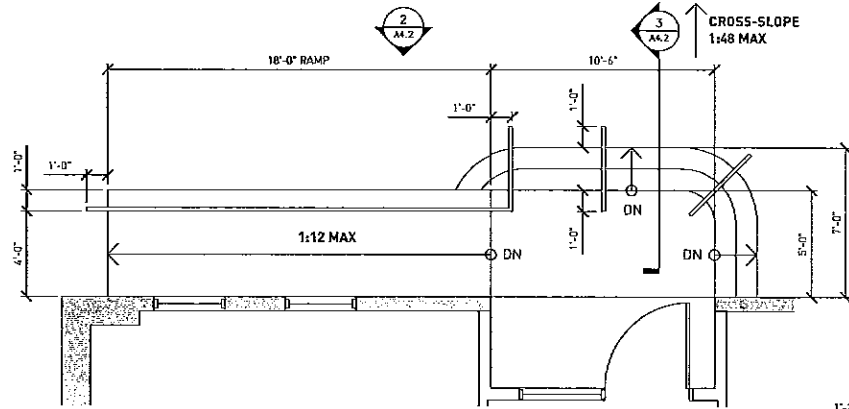


All drawings and material contained herein
© 2011 AcV2 Architecture

EXTERIOR RAMPS + STAIRS
DETAILS

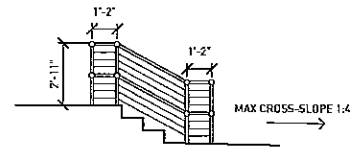
A4.2

17 March 2011

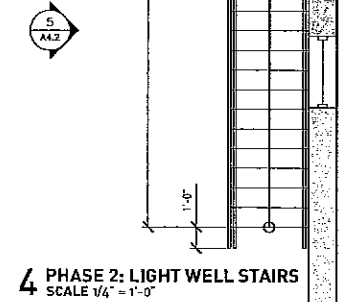


1 MAIN ENTRANCE RAMP + STAIRS
SCALE 1/4" = 1'-0"

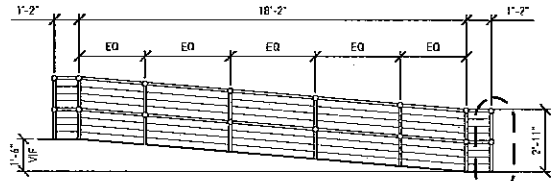
STAIRS
STAIRS AND RISER HEIGHTS SHALL BE 7 INCHES MAXIMUM AND 4 INCHES MINIMUM. THE RISER HEIGHT SHALL BE MEASURED VERTICALLY BETWEEN THE LEADING EDGES OF ADJACENT TREADS.



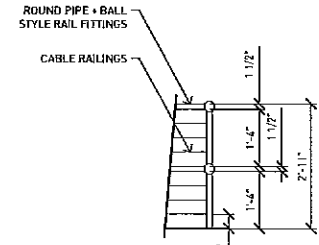
3 SECTION STAIRS
SCALE 1/4" = 1'-0"



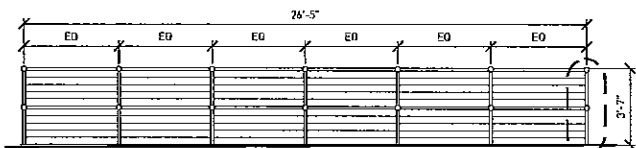
4 PHASE 2: LIGHT WELL STAIRS
SCALE 1/4" = 1'-0"



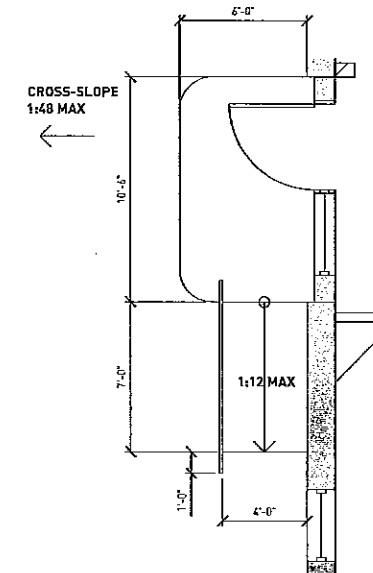
2 MAIN ENTRANCE RAMP HANDRAIL
SCALE 1/4" = 1'-0"



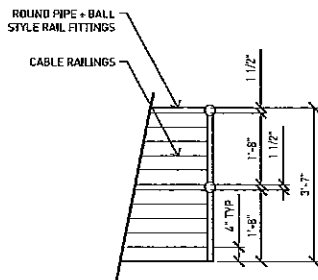
6 HANDRAIL DETAIL
SCALE 1/2" = 1'-0"



5 LIGHT WELL GUARDRAIL ELEVATION
SCALE 1/4" = 1'-0"



8 WEST ENTRANCE RAMP
SCALE 1/4" = 1'-0"



7 GUARDRAIL DETAIL
SCALE 1/2" = 1'-0"