

Bulman Karen

From: Tony DeMaro [tony_demaro@yahoo.com]
Sent: Friday, February 11, 2011 2:03 PM
To: Bulman Karen
Subject: RE: Murphys: 510 9th Street (11CM007) Submission for meeting Feb 18th
Attachments: Garage Door Bays.pdf; New Doors.pdf; New Enlarged Doors.pdf

We made some real progress this afternoon. Here is what I have attached:

1. PDF of both garage door's

Material Detail on the Overhead door: It will be an aluminum and glass overhead sectional door with a solid panel (possibly aluminum) on the bottom tier.

Storefront frame: The frame design will match the divided light layout of the overhead sectional door. Both the frame and glass color will match the overhead door's. We'll use Kawneer brand storefront, which is what Century Glass carries.

2. PDF of Carriage and door to second floor

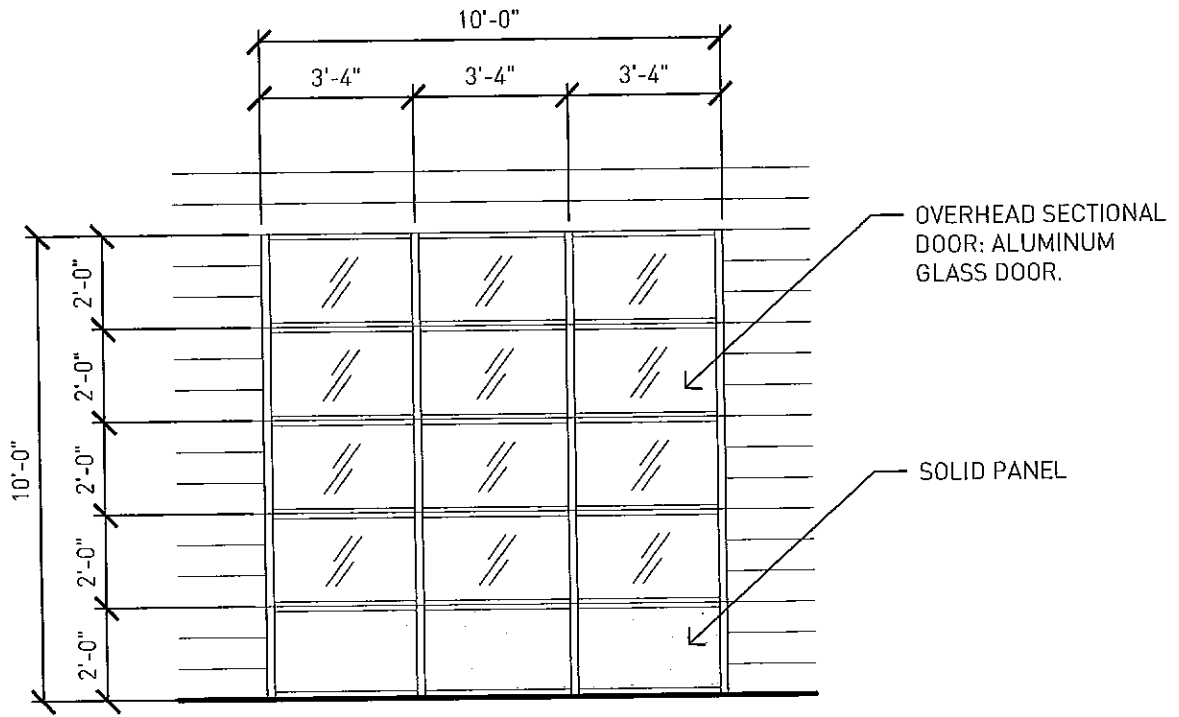
Door to Second Floor: Wood / Glass. To match historic.

Carriage Doors: Wood / Glass. To match historic doors in design. Two outside panels to be fixed and two 2'-6" center panels to be operable.

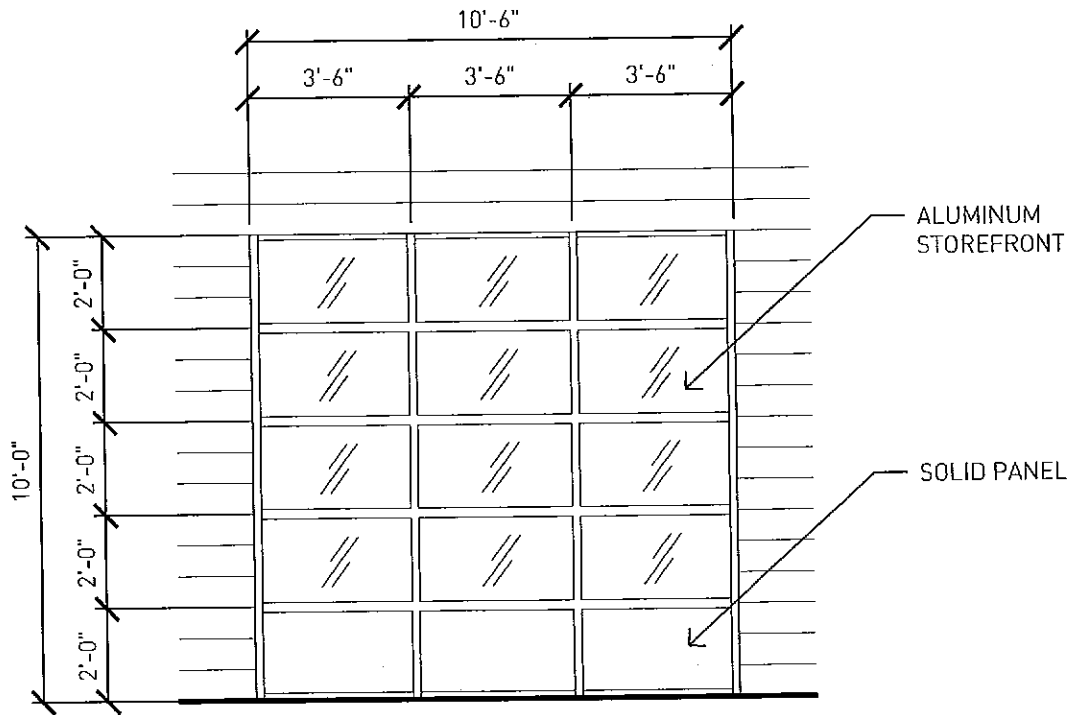
We are still working on the specs on the two doors we are turning to windows and the infill on the back door. Making progress however!

Thanks,

Tony

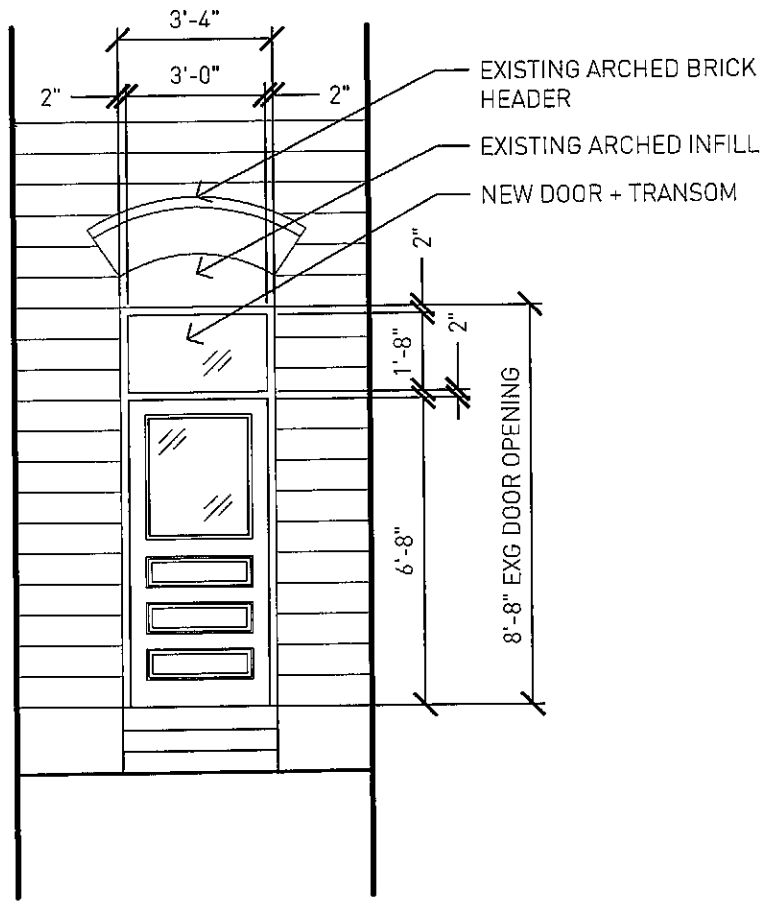


OVERHEAD SECTIONAL DOOR

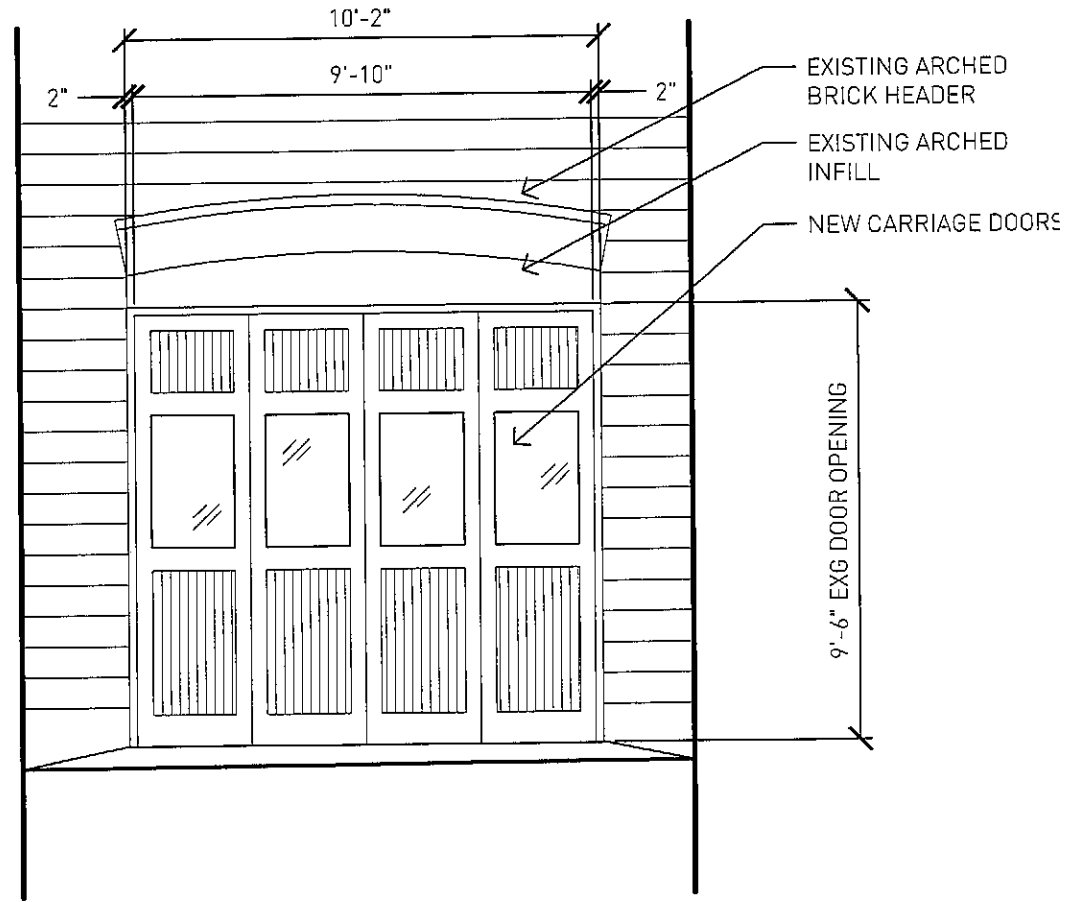


ALUMINUM STOREFRONT

GARAGE DOOR BAYS

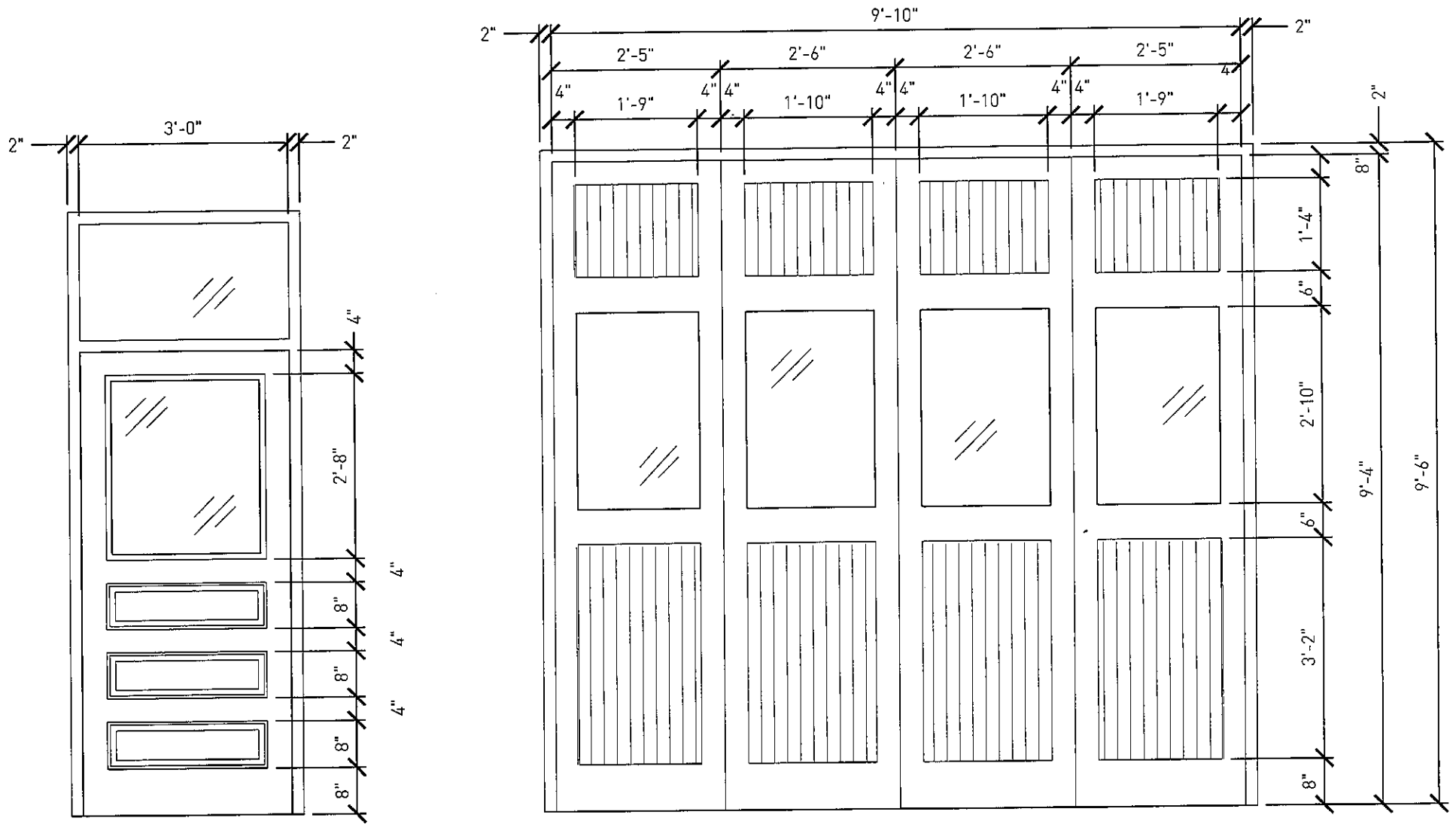


NEW DOOR



ALUMINUM STOREFRONT

NEW DOORS



NEW ENLARGED DOORS