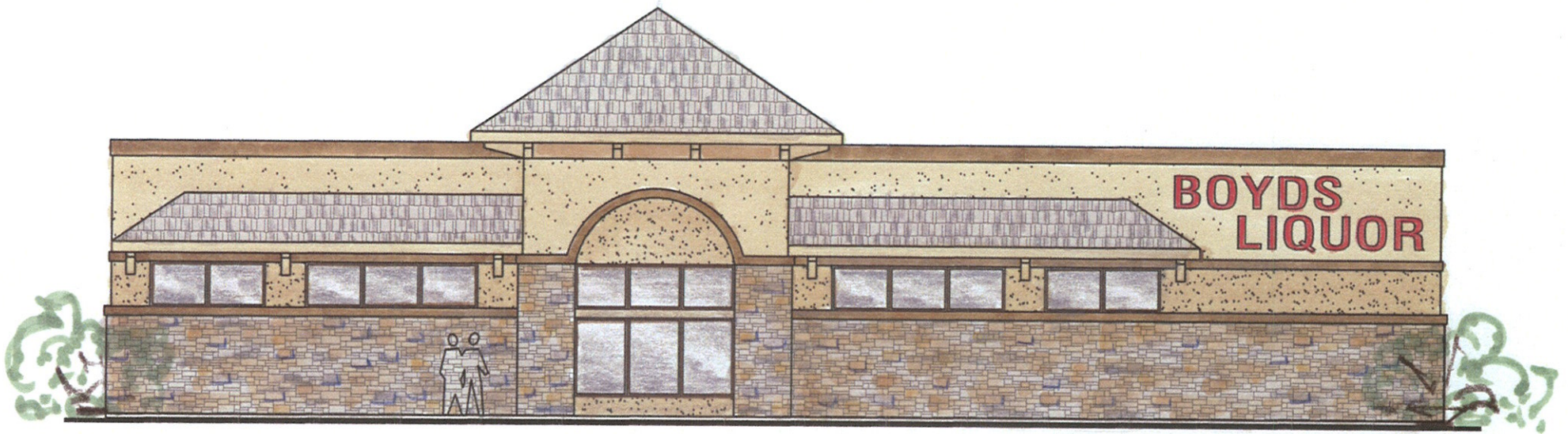


Fisk Land Surveying & Consulting, Inc.
1022 Main Street (P.O. Box 8154)
Rapid City, South Dakota 57709
(605) 348-1538
(605) 341-1112 (fx)

Boyd's Liquor
Lots 17 and 18, Block 15 Flormann Addition
Lots 4-6, Block 1 West Boulevard
1424 Mt Rushmore Rd
Rapid City, Pennington County, South Dakota

Surveyed by:	ML,BL
Date	10/21/10
Drawn by:	RWF
Checked by:	WF
Revisions	
Site Plan	1"=30'
	3 of 11
Project No.	09-12-06

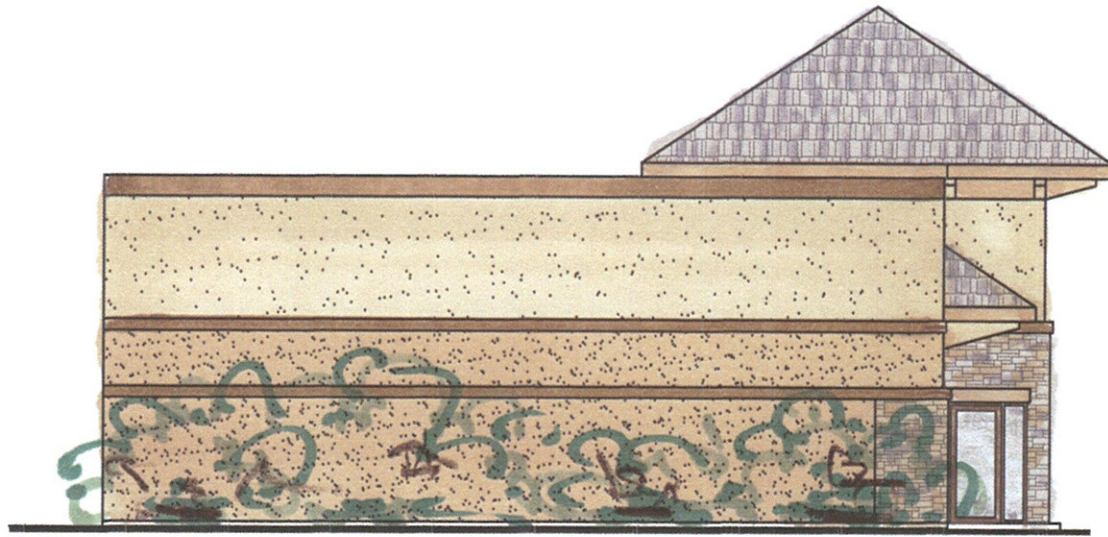
ONE CALL
BEFORE DIGGING
1-800-781-7474



WEST ELEVATION
NOT TO SCALE

BOYDS LIQUOR

ARTIST CONCEPT
1/27/10



NORTH ELEVATION
NOT TO SCALE

BOYDS LIQUOR

ARTIST CONCEPT

1/27/10