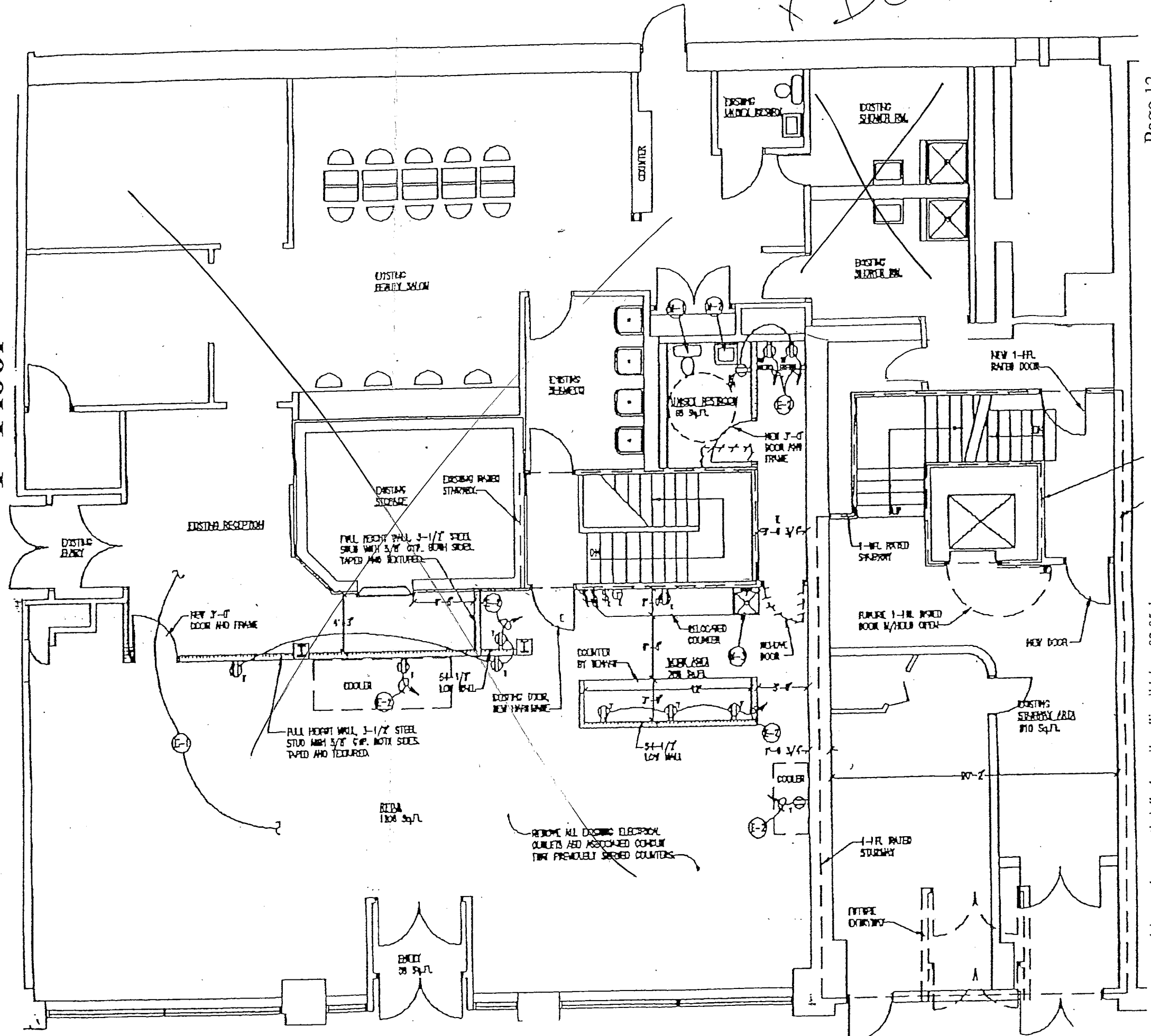
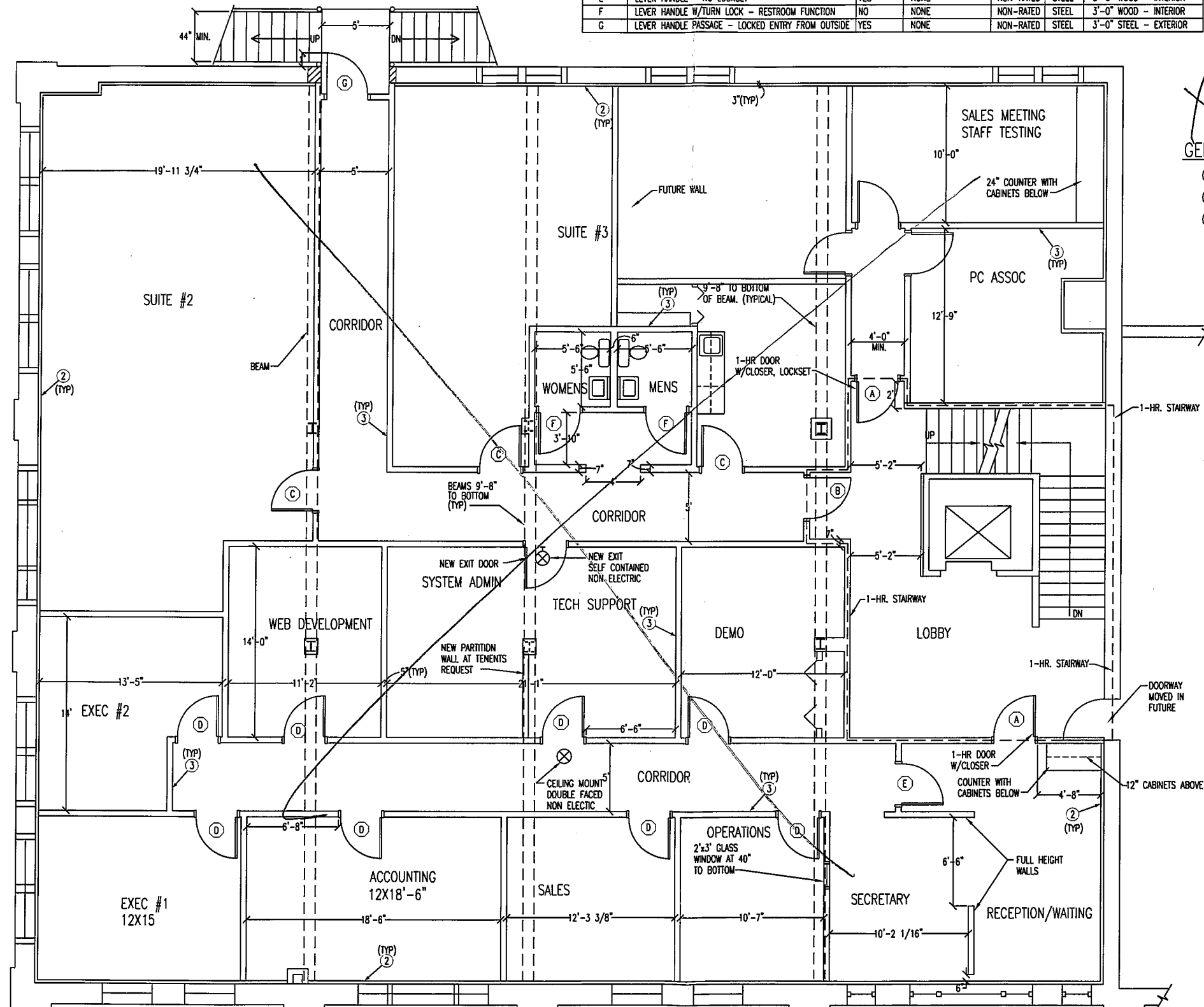


1st FLOOR

x Demo



DESIGN	HARDWARE DESCRIPTION	CLOSER	WINDOW GLAZING	RATING	FRAME	DOOR
A	LEVER HANDLE - LOCKSET	YES	NONE	1-HR	STEEL	3'-0" WOOD - INTERIOR
B	LEVER HANDLE - PASSAGE	YES	NONE	1-HR	STEEL	3'-0" WOOD - INTERIOR
C	LEVER HANDLE - LOCKSET (OFFICE ENTRY)	NO	NONE	NON-RATED	STEEL	3'-0" WOOD - INTERIOR
D	LEVER HANDLE - LOCKSET (OFFICE)	NO	NONE	NON-RATED	STEEL	3'-0" WOOD - INTERIOR
E	LEVER HANDLE - NO LOCKSET	YES	NONE	NON-RATED	STEEL	3'-0" WOOD - INTERIOR
F	LEVER HANDLE W/TURN LOCK - RESTROOM FUNCTION	NO	NONE	NON-RATED	STEEL	3'-0" WOOD - INTERIOR
G	LEVER HANDLE PASSAGE - LOCKED ENTRY FROM OUTSIDE	YES	NONE	NON-RATED	STEEL	3'-0" STEEL - EXTERIOR



X Demo

GENERAL CONSTRUCTION NOTES:

- ① CONTRACTOR TO PROVIDE ALL WALLS TAPED, TEXTURED AND PAINTED.
- ② NEW 3" FURRED WALL, 5/8" GYP, INSULATION, TAPE, TEXTURE, AND PAINT.
- ③ NEW 2x4 FRAMED WALL FROM FLOOR TO CEILING, PROVIDE 5/8" GYP. BOTH SIDES WITH SOUND INSULATION. TAPE, TEXTURE, AND PAINT.

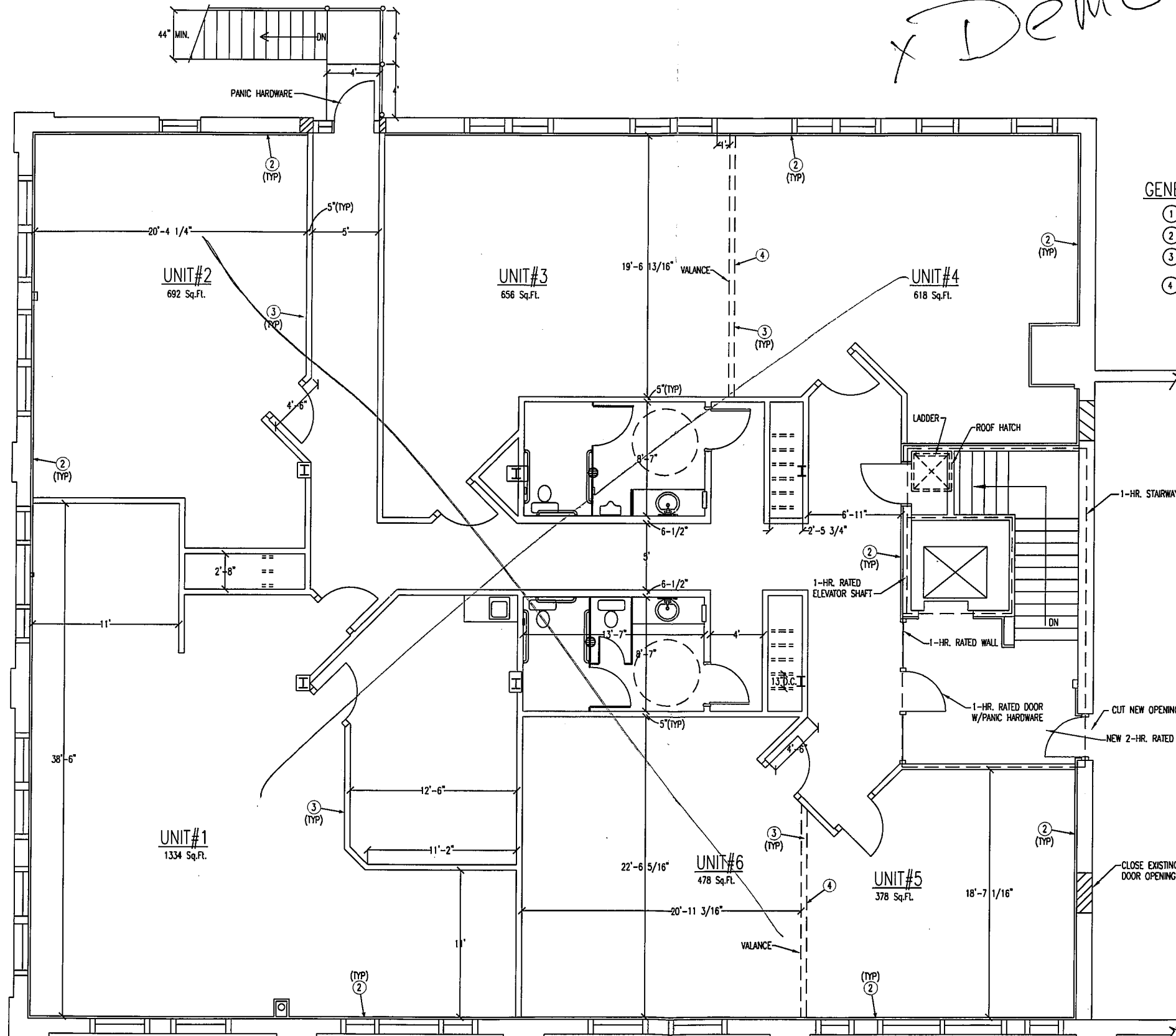
PHASE II

DRAWN BY: FK	CHECKED BY:	APPROVED BY: JWH	DATE: 9/26/97
ELKS BUILDING - RENOVATION SECOND FLOOR - PHASE II RAPID CITY, SOUTH DAKOTA			
MAC CONSTRUCTION			G-1

SECOND FLOOR GENERAL CONSTRUCTION PLAN
SCALE: 1/4" = 1'-0"



X DEMO



GENERAL CONSTRUCTION NOTES:

- ① CONTRACTOR TO PROVIDE ALL WALLS TAPED, TEXTURED AND PAINTED.
- ② NEW 2-1/2" FURRED WALL, 5/8" GYP, INSULATION, TAPE, TEXTURE, AND PAINT.
- ③ NEW 2x4 FRAMED WALL FROM FLOOR TO CEILING, PROVIDE 5/8" GYP. BOTH SIDES WITH SOUND INSULATION. TAPE, TEXTURE, AND PAINT.
- ④ FRAME VALANCE, SEE REFLECTED CEILING PLAN.

GROSS Sq.Ft.:

UNIT#1	1334 Sq.Ft.
UNIT#2	692 Sq.Ft.
UNIT#3	656 Sq.Ft.
UNIT#4	618 Sq.Ft.
UNIT#5	378 Sq.Ft.
UNIT#6	478 Sq.Ft.
COMMON	1402 Sq.Ft.
TOTAL	5558 Sq.Ft.

PHASE I

DRAWN BY: FK	CHECKED BY :	APPROVED BY: JWH	DATE: 6/18/97
ELKS BUILDING - RENOVATION THIRD FLOOR - PHASE I RAPID CITY, SOUTH DAKOTA			
MAC CONSTRUCTION			G-1

THIRD FLOOR PLAN - GENERAL
SCALE: 1/4"=1'-0"

