

**RUNDLE ERNSTBERGER ASSOCIATES, L.L.C.**  
 Land Planning • Urban Design • Landscape Architecture  
 621 W. Main Street, Suite 301, Leadville, CO 80422  
 TEL (802) 881-8076 FX (802) 561-0076  
 E-MAIL: runde@runde-ernstberger.com  
 www.runde.com  
 additional offices in:  
 Leadville, CO • Leadville, CO

**City of Rapid City**  
 Public Works Department  
 300 Sims Street, Rapid City, SD 57701  
 TEL (605) 339-4162 FX (605) 355-2063

**Destination Rapid City**  
 600 Main Street, Rapid City, SD 57701  
 TEL (605) 716-7979 FX (605) 341-6415

**Fourfront Design, Inc.**  
 Architecture and Civil Engineering  
 817 Seventh Street  
 Rapid City, SD 57701  
 TEL (605) 342-9470 FX (605) 342-9277

**Skyline Engineering, LLC**  
 Mechanical and Mechanical Engineering  
 651 12th Street  
 Rapid City, SD 57701  
 TEL (605) 327-3835 FX (605) 337-8859

**Albertson Engineering, Inc.**  
 Structural Engineering  
 3397 W. Main Street, Suite 200  
 Rapid City, SD 57702  
 TEL (605) 343-9606 FX (605) 341-7395

**Main Street Square  
 Site Development  
 Rapid City, South Dakota**

0 10 20 40  
 NORTH  
 SCALE: 1"=20'

REV.	DATE	DESCRIPTION	BY
1	06/23/10	50% CONSTRUCTION DRAWINGS REVIEW SET	REL

**COPYRIGHT NOTICE**  
 This drawing is the property of Rundle Ernstberger Associates, L.L.C. and is to be used only for the project and site for which it was prepared. It is not to be used for any other project without the written consent of Rundle Ernstberger Associates, L.L.C. The user of this drawing assumes all liability for any errors or omissions. The user of this drawing assumes all liability for any errors or omissions.

**Overall Site Plan**

City #:	091131
Project No.:	June 23, 2010
Drawn by:	EMA
Checked by:	ODR
File:	1131_501.00.dwg

50% CDs  
 OWNER  
 REVIEW SET

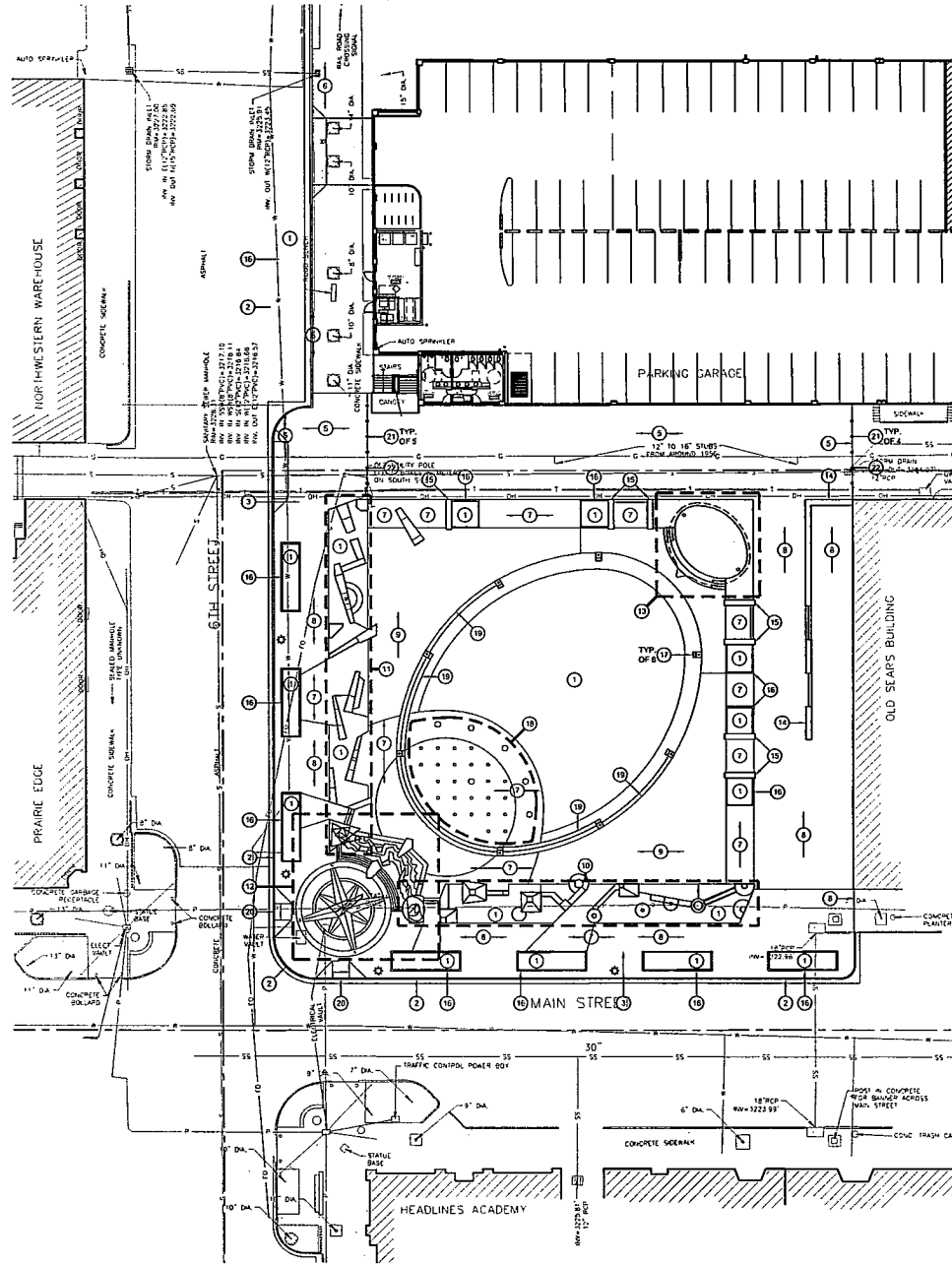
**SD 1.00**

**LAYOUT GENERAL NOTES:**

1. SITE LAYOUT DATA, INCLUDING COORDINATE POINTS, IS BASED ON A SURVEY PERFORMED BY \_\_\_\_\_ REFER TO \_\_\_\_\_ FOR HORIZONTAL LAYOUT CONTROL POINTS, REPORT ANY DISCREPANCIES BETWEEN PLANS AND FIELD CONDITIONS TO OWNER AND LANDSCAPE ARCHITECT IMMEDIATELY.
2. UNLESS NOTED OTHERWISE, ALL DIMENSIONS ARE TO THE FOLLOWING: FACE OF WALL, FACE OF BUILDING, FACE OF GUTTER, EDGE OF PAVEMENT, CENTERLINE OF PAVEMENT.
3. ALL EDGES OF PAVEMENTS ARE TO BE STRAIGHT (OR OF CONSISTENT RADIUS IN THE CASE OF CURVES) AS SHOWN HEREON; NO UNSPECIFIED TANGENTS OR KINKS WILL BE APPROVED.
4. ALL CONSTRUCTION LAYOUT STAKING IS TO BE PERFORMED BY A LAND SURVEYOR OR PROFESSIONAL ENGINEER REGISTERED IN THE STATE OF SOUTH DAKOTA, TO FACILITATE ACCURACY IN CONSTRUCTION STAKING, UPON WRITTEN REQUEST FROM CONTRACTOR, A CD CONTAINING THE ELECTRONIC DATA COMPARING THESE SITE DEVELOPMENT DRAWINGS WILL BE FORWARDED FROM THE LANDSCAPE ARCHITECT TO THE LAND SURVEYOR OR PROFESSIONAL ENGINEER EMPLOYED TO PERFORM CONSTRUCTION STAKING.
5. IN ORDER TO MAINTAIN THE INTEGRITY OF HORIZONTAL AND VERTICAL CONTROL FOR THE SITE, THE SURVEYOR OR PROFESSIONAL ENGINEER EMPLOYED BY THE CONTRACTOR TO PERFORM CONSTRUCTION LAYOUT STAKING SHALL SET AND PROTECT ADDITIONAL TRAVERSE POINTS OUTSIDE THE AREAS OF CONSTRUCTION ACTIVITY.
6. AS SOME OF THE HORIZONTAL CONTROL POINTS SHOWN ON THESE PLANS AS EXISTING MAY HAVE BEEN REMOVED OR DAMAGED SINCE THEY WERE SET, THE CONTRACTOR SHALL DURING THE BIDDING PROCESS, VERIFY THE EXISTENCE AND INTEGRITY OF THE HORIZONTAL CONTROL POINTS SHOWN HEREON. THE CONTRACTOR SHALL INCLUDE ANY WORK NECESSARY TO ESTABLISH RELIABLE LAYOUT CONTROL FOR THE PROJECT IN THE BID.
7. REFER TO SHEET SD 4.6 SITE GRADING PLAN FOR VERTICAL LAYOUT DATA.

**LAYOUT KEYNOTES:**

- 1 PLANT BED OR LAWN AREA REFER TO SHEET SD 6.0
- 2 CONCRETE CURB AND GUTTER REFER TO DETAIL, SHEET SD 5.1
- 3 CONCRETE BARRIER CURB REFER TO DETAIL, SHEET SD 5.1
- 4 CONCRETE PAVEMENT, VEHICULAR REFER TO DETAIL, SHEET SD 5.1
- 5 BRICK PAVEMENT, VEHICULAR REFER TO DETAIL, SHEET SD 5.1
- 6 CONCRETE SIDEWALK REFER TO DETAIL, SHEET SD 5.1
- 7 PRECAST PAVERS ON SUBSLAB REFER TO DETAIL, SHEET SD 5.1
- 8 BRICK PAVERS ON SUBSLAB REFER TO DETAIL, SHEET SD 5.1
- 9 CRUSHED GRANITE PAVEMENT REFER TO DETAIL, SHEET SD 5.1
- 10 BADLANDS STONE TAPESTRY REFER TO PLAN ENLARGEMENT, SHEET SD 3.2
- 11 BLACK HILLS STONE TAPESTRY REFER TO PLAN ENLARGEMENT, SHEET SD 3.2
- 12 WAYFINDING PLAZA AND CASCADES FOUNTAIN REFER TO PLAN ENLARGEMENT, SHEET SD 3.2
- 13 STAGE REFER TO PLAN ENLARGEMENT, SHEET SD 3.2
- 14 RETAINING WALL AT SEARS BUILDING REFER TO DETAIL, SHEET SD 5.2
- 15 SEATWALL REFER TO DETAIL, SHEET SD 5.2
- 16 PLANTER CURB REFER TO DETAIL, SHEET SD 5.1
- 17 GRANITE LIGHT POLE PIER REFER TO DETAIL, SHEET SD 5.2
- 18 INTERACTIVE FOUNTAIN REFER TO FOUNTAIN SHEETS
- 19 LAWN STEPS REFER TO DETAIL, SHEET SD 5.2
- 20 CURB RAMP, TYPE 1 REFER TO DETAIL, SHEET SD 5.1
- 21 BOLLARD, EMBEDDED REFER TO DETAIL, SHEET SD 5.1
- 22 BOLLARD, REMOVABLE REFER TO DETAIL, SHEET SD 5.1



**RUNDELL ERNSTBERGER ASSOCIATES, LLC**  
 Land Planning • Urban Design • Landscape Architecture  
 611 W Main Street, Suite 101, Rapid City, SD 57702  
 TE (605) 251-1670 FX (605) 251-9076  
 E ernstber@runell.com www.ernst.com  
 additional offices in:  
 Indianapolis, IN | Muncie, IN

**City of Rapid City**  
 Public Works Department  
 300 8th Street, Rapid City, SD 57701  
 TE (605) 334-4163 FX (605) 355-3083

**Destination Rapid City**  
 606 Main Street, Rapid City, SD 57701  
 TE (605) 710-7979 FX (605) 241-6415

**FourFront Design, Inc.**  
 Architect and Civil Engineering  
 517 Seventh Street  
 Rapid City, SD 57701  
 TE (605) 342-9470 FX (605) 342-2377

**Skylines Engineering, LLC**  
 Electrical and Mechanical Engineering  
 Rapid City, SD 57701  
 TE (605) 721-2550 FX (605) 337-3859

**Albertson Engineering, Inc.**  
 Structural Engineering  
 322 W Main Street, Suite C  
 Rapid City, SD 57702  
 TE (605) 342-9606 FX (605) 241-7395

**Main Street Square Site Development**  
 Rapid City, South Dakota

0' 10' 20' 40'  
 NORTH SCALE 1"=20'

NO.	REVISION	DATE
1	50% CONSTRUCTION DRAWINGS REVIEW SET	6/23/10

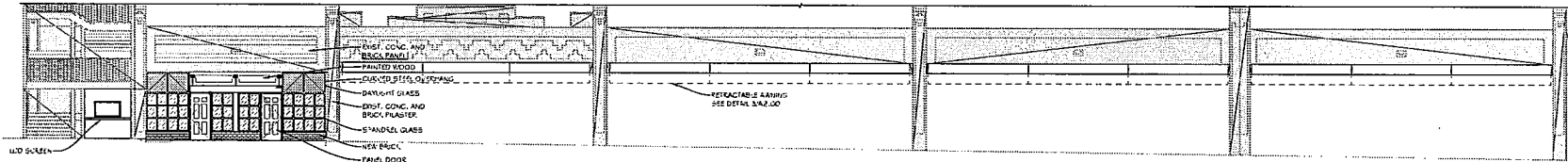
**COPYRIGHT NOTICE:**  
 The copyright in this drawing is owned by the author and is not to be reproduced, stored in a retrieval system, or transmitted in any form or by any means, electronic, mechanical, photocopying, recording, or by any information storage and retrieval system, without the prior written permission of the author.

**Site Layout Keynote Plan**

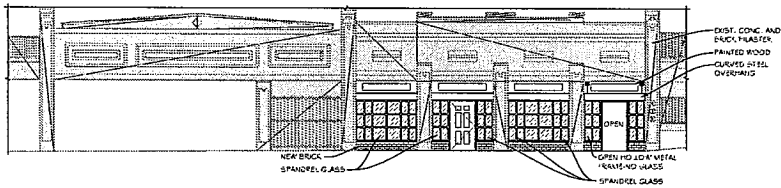
PROJECT NO.	CITY #:
091131	
DATE:	June 23, 2010
DRAWN BY:	PIA
CHECKED BY:	DDR
FILE:	1131_S03.10.dwg

50% CDs  
 OWNER  
 REVIEW SET

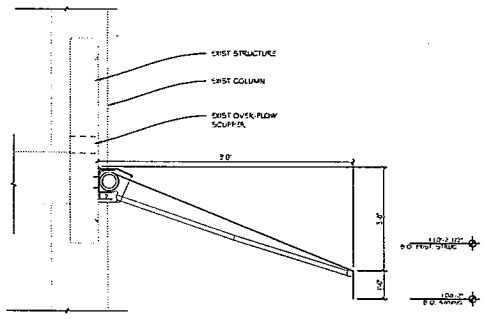
**SD 3.10**



1 PROPOSED RESTROOM EXTERIOR ELEVATION  
1/2" = 1'-0"



2 PROPOSED MECHANICAL ROOM EXTERIOR ELEVATION  
1/2" = 1'-0"



3 AWNING DETAIL  
1/2" = 1'-0"

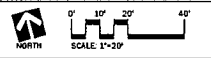


**RUNDELL ERNSTBERGER ASSOCIATES, LLC**  
 Land Planning + Urban Design + Landscape Architecture  
 411 W. Main Street, Suite 2000, Rapid City, SD 57701  
 TE (605) 342-8676 FX (605) 342-8676  
 Email: ronald@reassoc.com  
 www.reassoc.com  
 Add Special Offices in:  
 Indianapolis, IN | Knoxville, TN

**City of Rapid City**  
 Public Works Department  
 300 South Street, Rapid City, SD 57701  
 TE (605) 324-2428 FX (605) 355-3943  
  
**Destination Rapid City**  
 608 Main Street, Rapid City, SD 57701  
 TE (605) 716-7979 FX (605) 341-6415

**FourFront Design, Inc.**  
 Architecture and Civil Engineering  
 517 Seventh Street  
 Rapid City, SD 57701  
 TE (605) 342-9470 FX (605) 342-2377  
  
**Skyline Engineering, LLC**  
 Electrical and Mechanical Engineering  
 415 12th Street  
 Rapid City, SD 57701  
 TE (605) 731-3800 FX (605) 737-3859  
  
**Alhorson Engineering, Inc.**  
 Structural Engineering  
 3322 W. Main Street, Suite C  
 Rapid City, SD 57702  
 TE (605) 342-9600 FX (605) 341-7295

Main Street Square  
 Site Development  
 Rapid City, South Dakota



NO.	DATE	DESCRIPTION	BY
1	4/23/10	50% CONSTRUCTION DRAWINGS REVIEW SET	JV/DR

**COPYRIGHT NOTICE:**  
 THE CONTENTS OF THIS DRAWING ARE THE PROPERTY OF THE ARCHITECT. NO PART OF THIS DRAWING IS TO BE REPRODUCED OR TRANSMITTED IN ANY FORM OR BY ANY MEANS, ELECTRONIC OR MECHANICAL, INCLUDING PHOTOCOPYING, RECORDING, OR BY ANY INFORMATION STORAGE AND RETRIEVAL SYSTEM, WITHOUT THE WRITTEN PERMISSION OF THE ARCHITECT.

**Exterior Elevations**

**CITY PLAN**  
 City #  
 Project No. 091131  
 Date: June 23, 2010  
 Drawn by: FWA  
 Checked by: DDR  
 File: 1592\_A2.00.dwg

**50% CDs OWNER REVIEW SET**

**A2.00**