

PLANT LIST

ALT. QTY	QTY	SYMBOL	COMMON NAME	BOTANICAL NAME	SIZE	COMMENTS
DECIDUOUS TREES						
	5	NTA	NORTHERN TREASURE ASH	FRAXINUS 'NORTHERN TREASURE'	2" CAL.	SPACE PER PLANS
	7	SHL	SKYLINE HONEYLOCUST	GLEDITSIA TRIACANTHOS 'SKYLINE'	2" CAL.	SPACE PER PLANS
	7	BL	BOULEVARD LINDEN	TILIA AMERICANA 'BOULEVARD'	2" CAL.	SPACE PER PLANS
PERENNIALS						
	98	PDA	PURPLE DOME ASTER	ASTERNOVAE-ANGLIAE 'PURPLE DOME'	#1 CONTAINER	2.5' O.C.
	-36	KFG	KARL FOERSTER GRASS	CALAMAGROSTIS ACUTIFOLIA 'KARL FOERSTER'	#1 CONTAINER	2' O.C.
	-31	HFG	HAMLN FOUNTAIN GRASS	PENNISETUM ALOPECUROIDES 'HAMLIN'	#1 CONTAINER	2' O.C.
	41	BOG	BLUE OAT GRASS	HELICTOTRICHON SEMPERVIRENS	#2 CONTAINER	1.5' O.C.
	-3	SDL	STELLA D' ORO DAYLILY	HEMEROCALLIS 'STELLA D' ORO'	#1 CONTAINER	1.5' O.C.
	18	IRIS	BLUE FLAG IRIS	IRIS VERSICOLOR	#1 CONTAINER	1.5' O.C.
	51	PWC	PURPLE WINTER CREEPER	EUONYMUS FORTUNEI	#1 CONTAINER	1.5' O.C.
	143	RB	BLACK EYED SUSAN	RUDBECKIA HIRTA	#1 CONTAINER	1.5' O.C.
	4	RS	RUSSIAN SAGE	PERYSKIA ATRIPLICIFOLIA	#1 CONTAINER	1.5' O.C.

PLANTING URN PLANT LIST

ALL URN SHALL BE FILLED WITH THE FOLLOWING SPECIFIED PLANTS.

URN TYPE 1:
BLAZING STAR: (LIATRIA PYCHOSTACHYA)
GOLDSTURM RUDBECKIA (RUDBECKIA FULGIDA 'GOLDSTURM')
PURPLE POPPY MALLOW: (CALLIRHOE INVOLUCRATA)

URN TYPE 2:
BLUE LITTLE BLUE STEM (SCHIZACHYRUM SCOPANUM)
MAGNUS PURPLE CONEFLOWER (ECHINACEA PURPUREA MAGNUS)
LOGAN CALHOUN POPPY MALLOW (CALLIRHOE ALCAEODIS 'LOGAN CALHOUN')

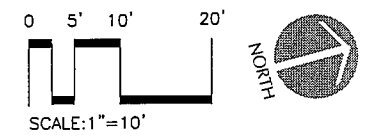
URN TYPE 3:
RED MEXICAN HAT (RATIBIDA COLUMNIFERADO 'RED')
GERSE QUEEN YARROW (ARCHILLEA MILLEFOLIUM)
CREME BRULEE COREOPSIS (COREOPSIS VERTICILLATA 'CREME BRULEE')

GENERAL PLANTING NOTES

- CONTRACTOR SHALL LOCATE AND PROTECT ALL EXISTING UTILITIES. CONTRACTOR SHALL REPAIR OR REPLACE ANY DAMAGED UTILITIES AT NO COST TO OWNER.
- ALL PLANT MATERIAL SHALL CONFORM TO THE GUIDELINES ESTABLISHED BY THE CURRENT AMERICAN STANDARD FOR NURSERY STOCK, PUBLISHED BY THE AMERICAN ASSOCIATION OF NURSERYMEN OR EQUIVALENT.
- ALL TREE AND SHRUB LOCATIONS SHALL BE STAKED BY CONTRACTOR AND APPROVED BY PROJECT LANDSCAPE ARCHITECT.
- ALL PLANTS SHALL BEAR THE SAME RELATIONSHIP TO FINISHED GRADE AS THE PLANT'S ORIGINAL GRADE BEFORE DIGGING.
- ALL PLANTS AND STAKES SHALL BE SET PLUMB UNLESS OTHERWISE SPECIFIED.
- ALL PLANTS SHALL BE INSTALLED IN ACCORDANCE WITH ALL DRAWINGS AND SPECIFICATIONS.
- ALL SHRUB BEDS ARE TO RECEIVE PEA GRAVEL MULCH, TO A 4" MINIMUM DEPTH. PERENNIAL AREAS SHALL RECEIVE 2" MIN. DEPTH.
- ALL PLANTING BEDS SHALL BE STAKED BY CONTRACTOR AND APPROVED BY LANDSCAPE ARCHITECT PRIOR TO BED PREPARATION.
- CONTRACTOR SHALL PROVIDE SOIL FILL AS SPECIFIED FOR ALL PLANTING AREAS AND PITS.
- PLANTING SEASONS SHALL BE FROM APRIL 15 TO JUNE 15 AND FROM SEPTEMBER 15 TO NOVEMBER 1, UNLESS OTHERWISE INDICATED.
- CONTRACTOR IS RESPONSIBLE FOR MAINTAINING HEALTH OF ALL PLANT MATERIAL INCLUDING TREES, SHRUBS, PERENNIALS, TURF GRASSES, AND NATIVE GRASSES UNTIL FINAL ACCEPTANCE OF PROJECT.
- ALL PLANTS SHALL BE SPRAYED WITH AN ANTIDESSICANT WITHIN 24 HOURS OF PLANTING, AND AT THE BEGINNING OF THEIR FIRST WINTER.
- THE CONTRACTOR SHALL REFER TO THE CONTRACT SPECIFICATIONS AND PLANTING DETAILS FOR ADDITIONAL REQUIREMENTS.
- THE CONTRACTOR SHALL PROVIDE A ONE (1) YEAR WARRANTY FOR ALL PLANT MATERIAL UNLESS OTHERWISE INDICATED IN SPECIFICATIONS.

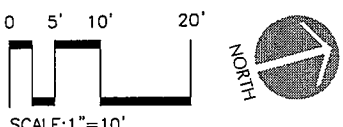
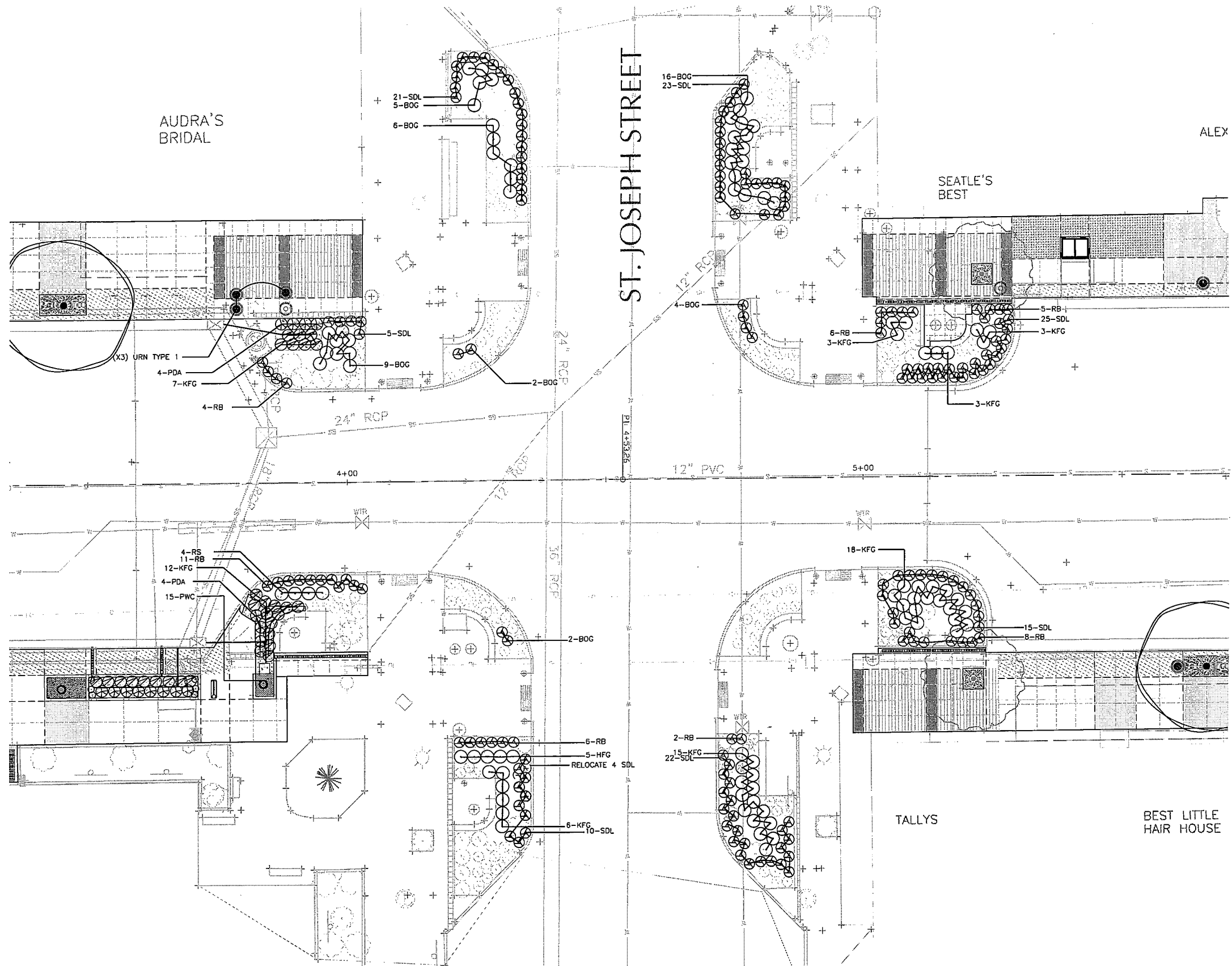
BID ALTERNATE NOTES

- IF BID ALTERNATE IS CHOSEN A PLANT MATERIAL DEDUCTION WILL BE ISSUED. DEDUCTION QUANTITY IS CALLED OUT IN THE ALT. QTY COLUMN IN THE PLANTING SCHEDULE.
- ALL EXISTING PLANT MATERIAL WITHIN THE ALTERNATE BID AREA SHALL BE REMOVED, SALVAGED, AND REPLANTED WITHIN THE DOWNTOWN AREA. REPLANTING LOCATIONS SHALL BE FLAGGED BY THE LANDSCAPE ARCHITECT DURING CONSTRUCTION.

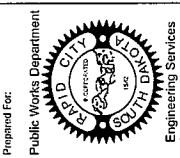


EXISTING UTILITIES LOCATIONS:
THE LOCATIONS OF EXISTING UNDERGROUND UTILITIES ARE SHOWN IN AN APPROXIMATE WAY ONLY AND HAVE NOT BEEN INDEPENDENTLY VERIFIED BY THE OWNERS OR ITS REPRESENTATIVE. THE CONTRACTOR SHALL DETERMINE THE EXACT LOCATION OF ALL EXISTING UTILITIES BEFORE COMMENCING WORK, AND AGREES TO BE FULLY RESPONSIBLE FOR ANY AND ALL DAMAGES WHICH MIGHT BE OCCASIONED BY THE CONTRACTOR'S FAILURE TO EXACTLY LOCATE AND PRESERVE ANY AND ALL UNDERGROUND UTILITIES. CONTACT THE SOUTH DAKOTA ONE CALL NOTIFICATION CENTER 2025 CENTRE POINTE BOULEVARD #310 MENDOTA HEIGHTS, MN 55120 1-800-781-7474

Wyss Associates, Inc.
Landscape Architecture - Golf Course Architecture - Parks & Recreation Design
728 Sixth Street Rapid City, South Dakota 57701-3670 605.348.2268 Fax 605.348.6506 email: info@wyssassociates.com




Wyss Associates, Inc.
 Landscape Architecture - Golf Course Architecture - Parks & Recreation Design
 728 Sixth Street Rapid City, South Dakota 57701-3670 605.348.2268 Fax 605.348.6506
 email: info@wyssassociates.com



Prepared For:
 Public Works Department
 517 7th Street Rapid City SD 57701
 ph: 605.342.9470 fax: 605.342.2377
 www.rapidcity.gov
 ARCHITECTURE ENGINEERING GIS SURVEYING



PRELIMINARY
 95%
 Review Set

Scale: AS SHOWN	
Designed By: MIF	Drawn By: MFI/AJ/AW
Design Date: 12-23-09	Print Date: 7-02-10
Internal Job No: 08103	
Surveyed By:	Survey Date:
Revisions:	

DOWNTOWN STREET RECONSTRUCTION
SIXTH STREET
OMAHA STREET TO KANSAS CITY STREET
 RAPID CITY, SOUTH DAKOTA

CITY PROJECT #	ST10-1817
Sheet Title:	
6TH ST. - KC TO ST JOE	
PLANTING PLAN	
STA 4+00 TO 5+50	
Sheet:	P-2