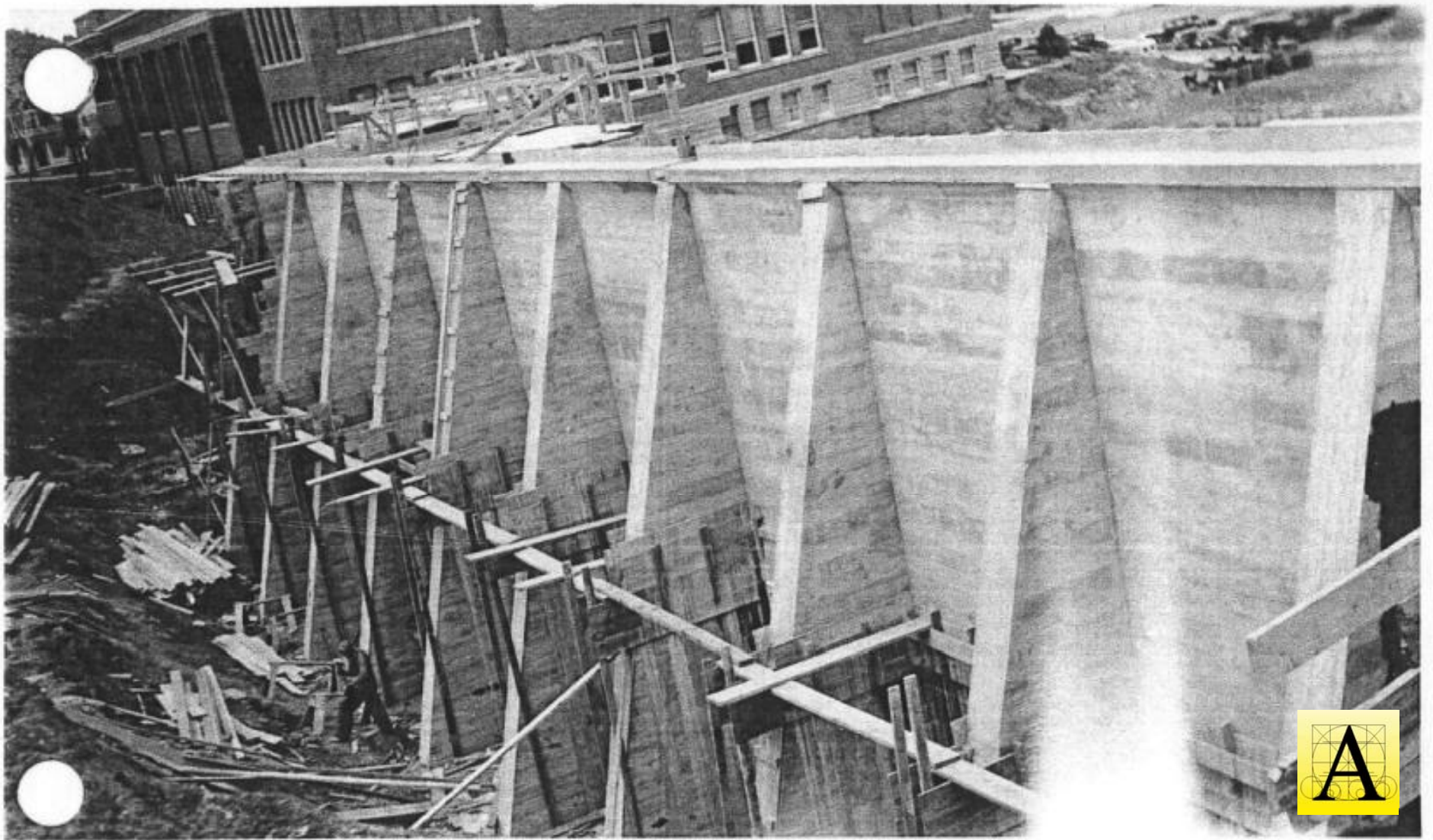


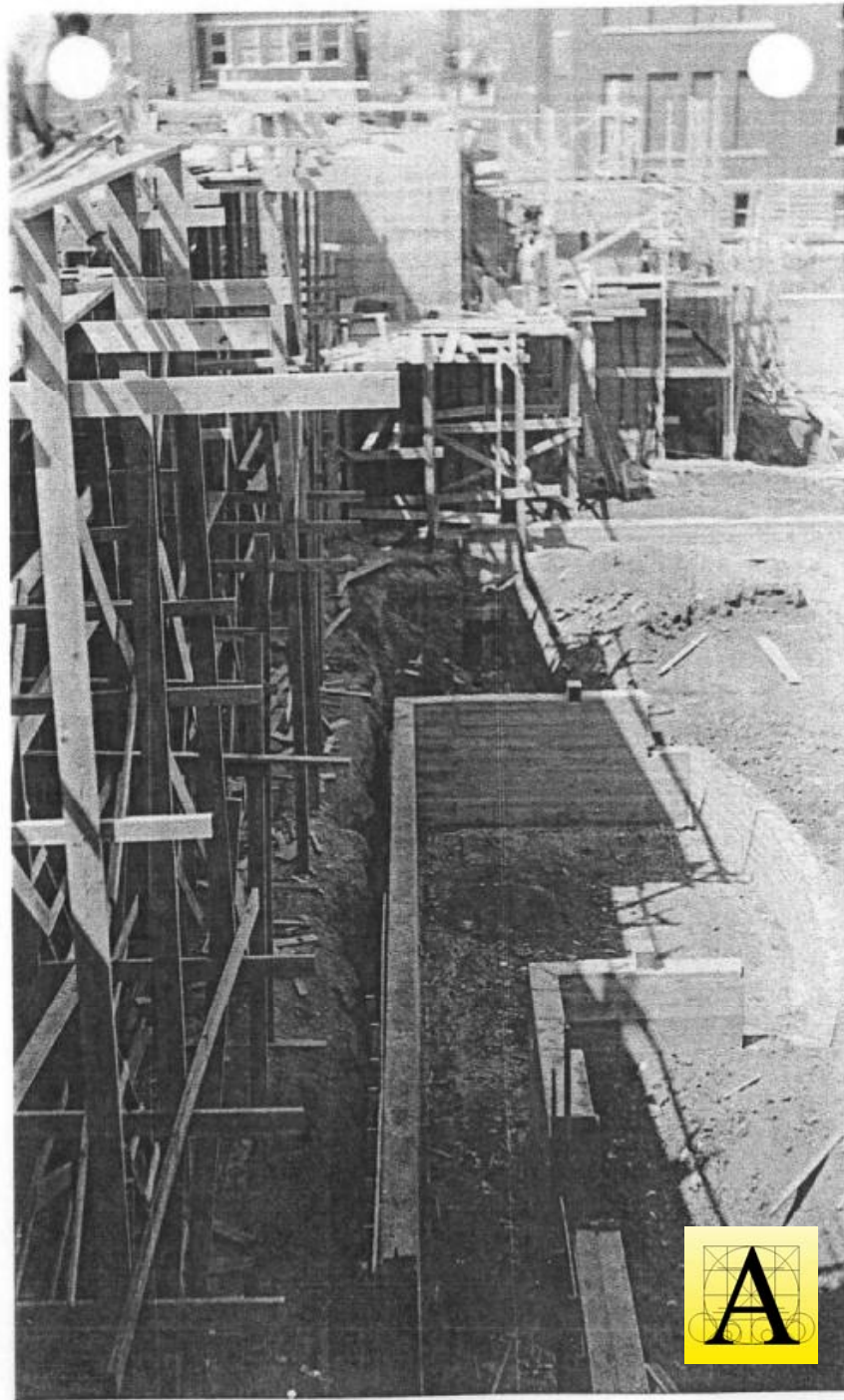
A stage with red curtains and a wooden floor. The curtains are drawn back, revealing a wooden stage floor. The stage is lit with warm, yellow light. The curtains have tassels at the top and bottom. The stage floor has several small, round, yellow lights.

# Dakota Middle School Theatre

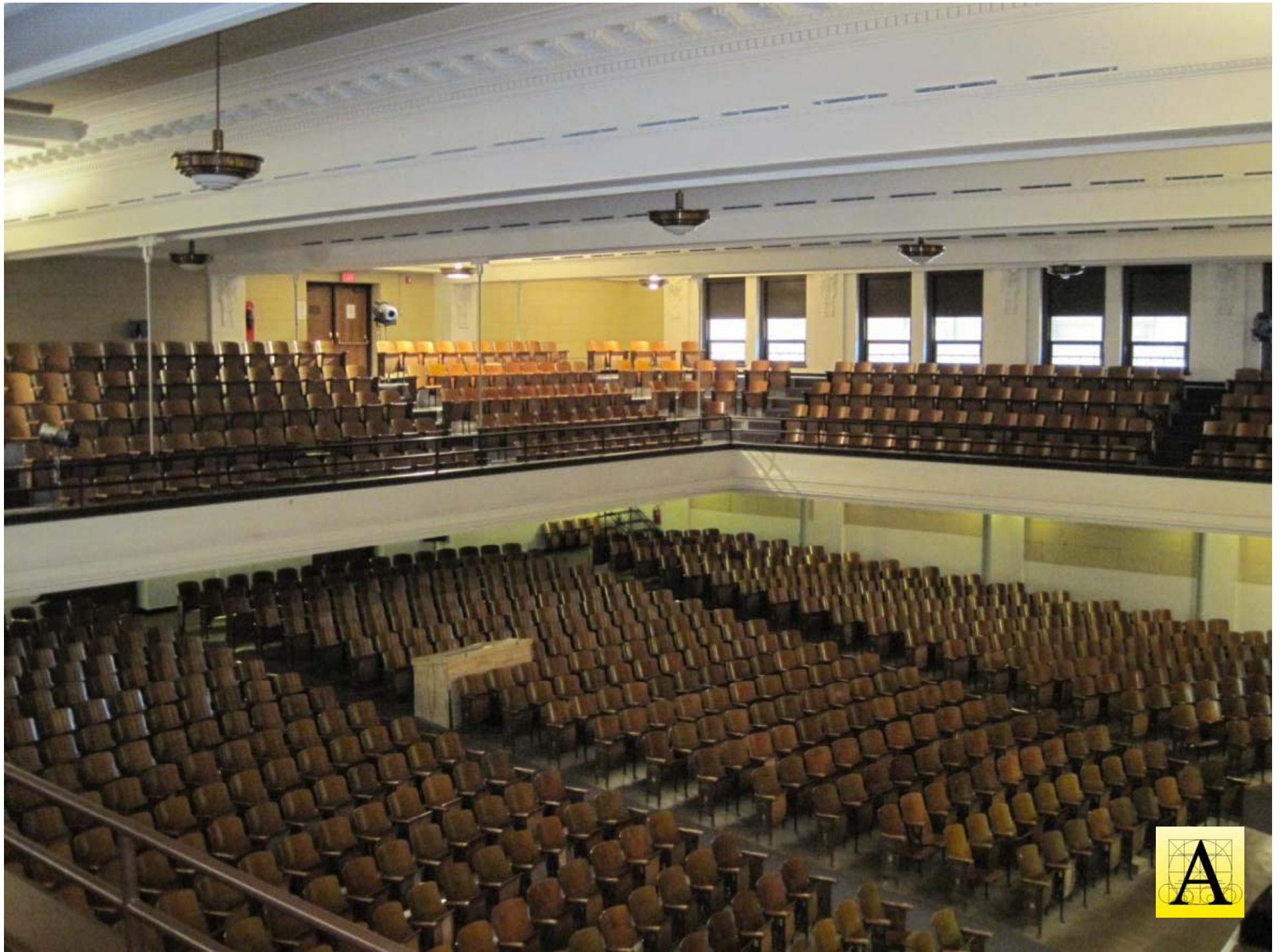
Rapid City, South Dakota









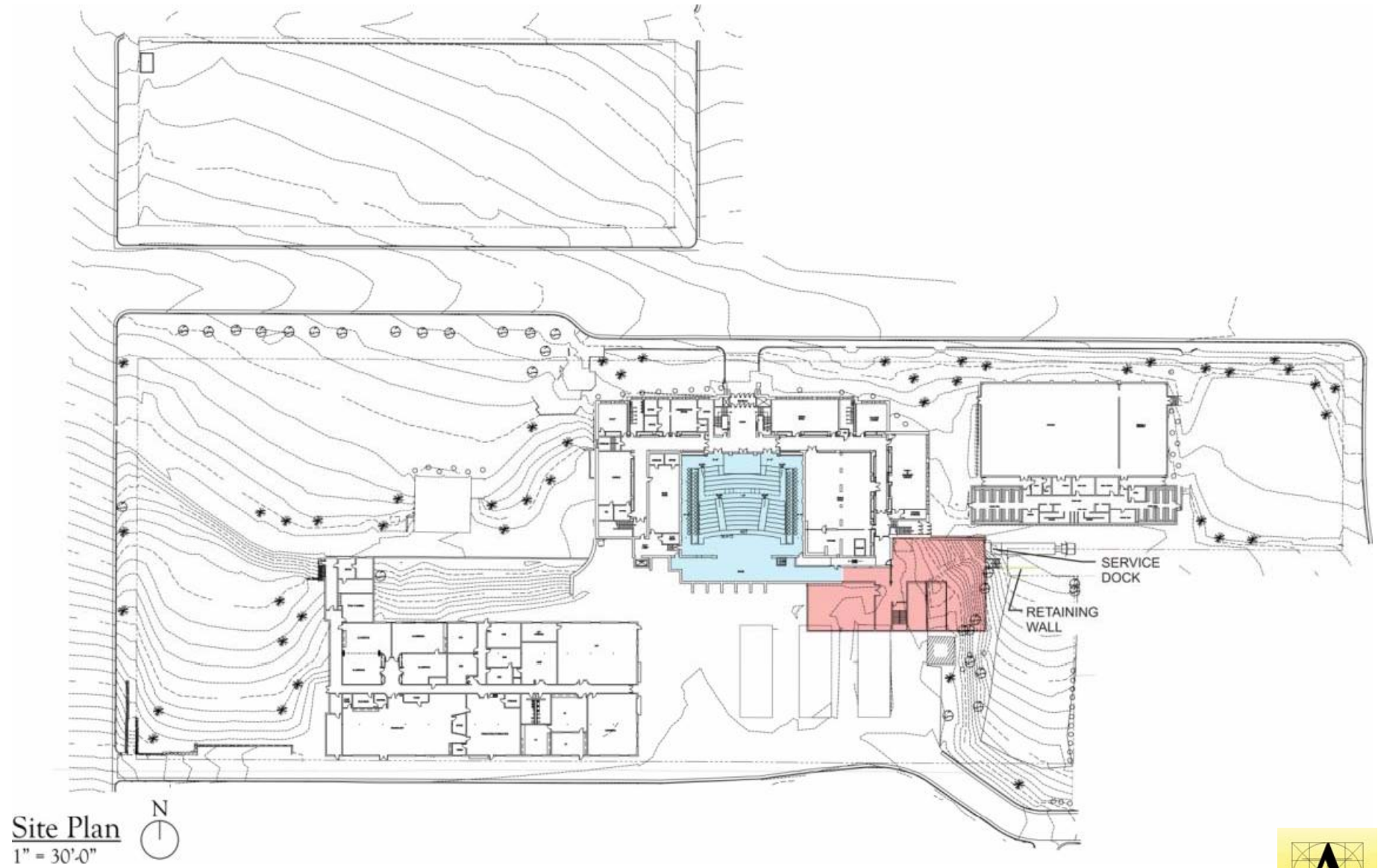






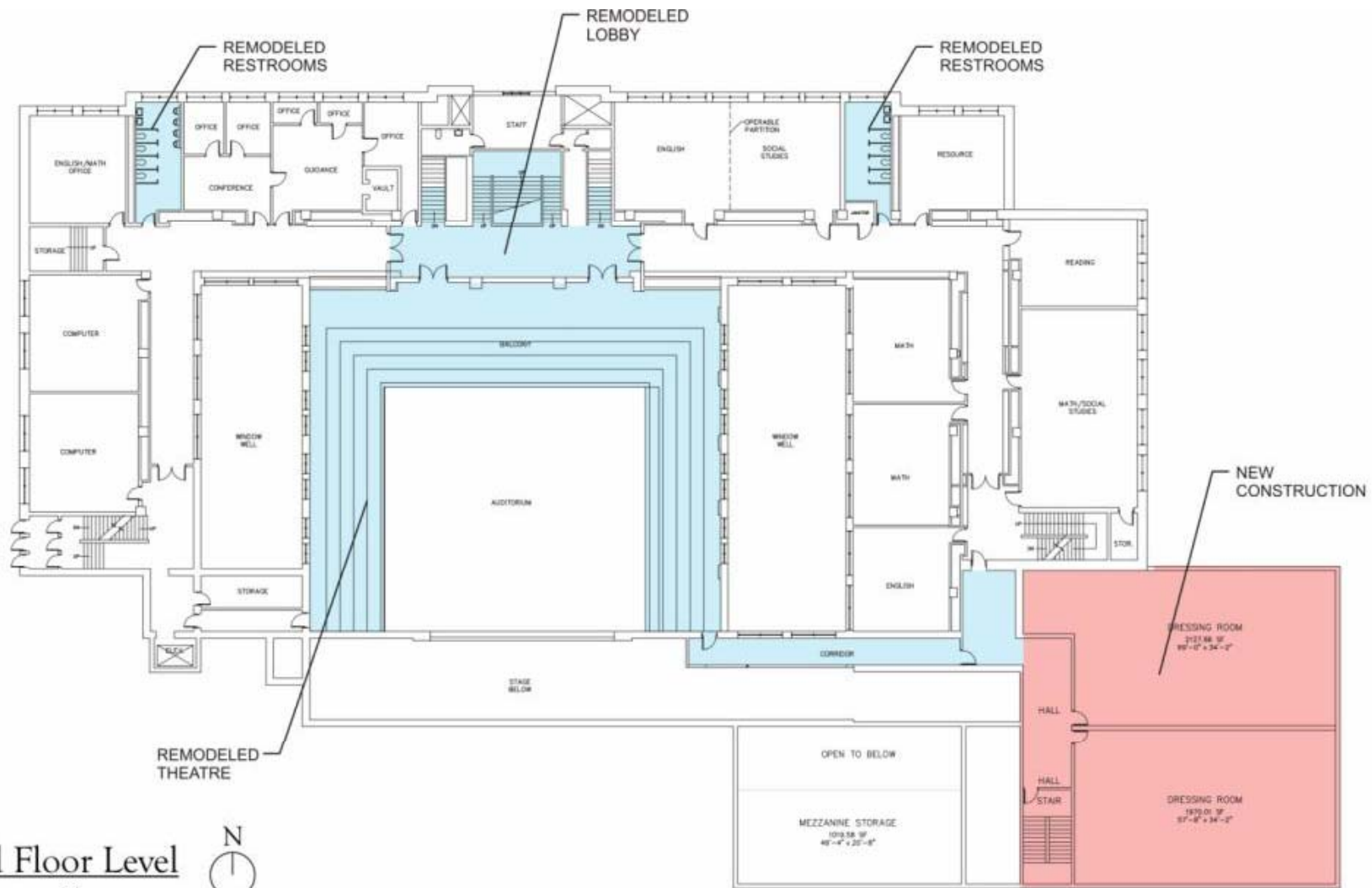












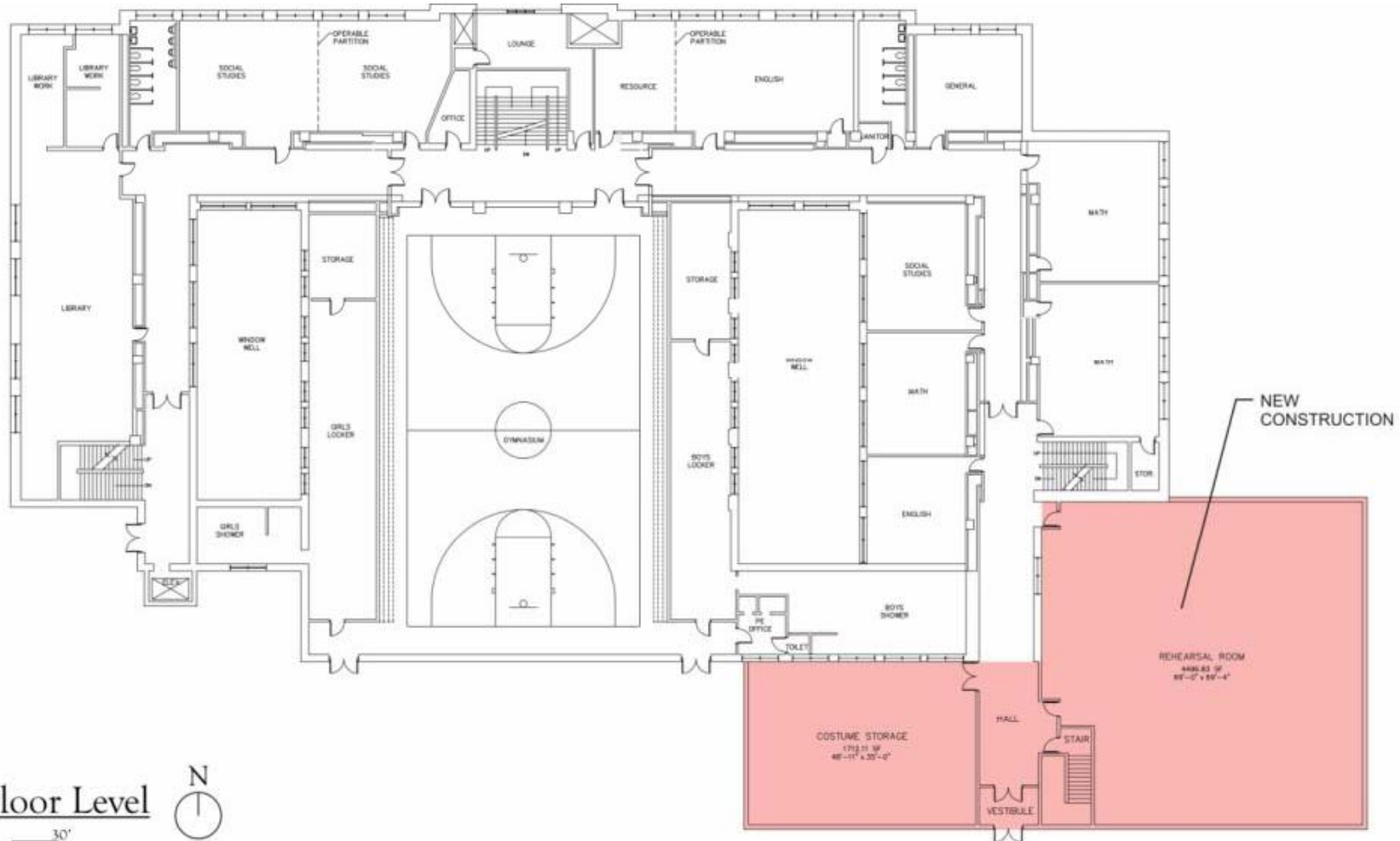
Second Floor Level

0 10' 20' 30' 40'

N



New Theatre : 7,716 sq. ft. (This Level)



Third Floor Level

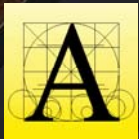
0 10' 20' 30' 40'

N

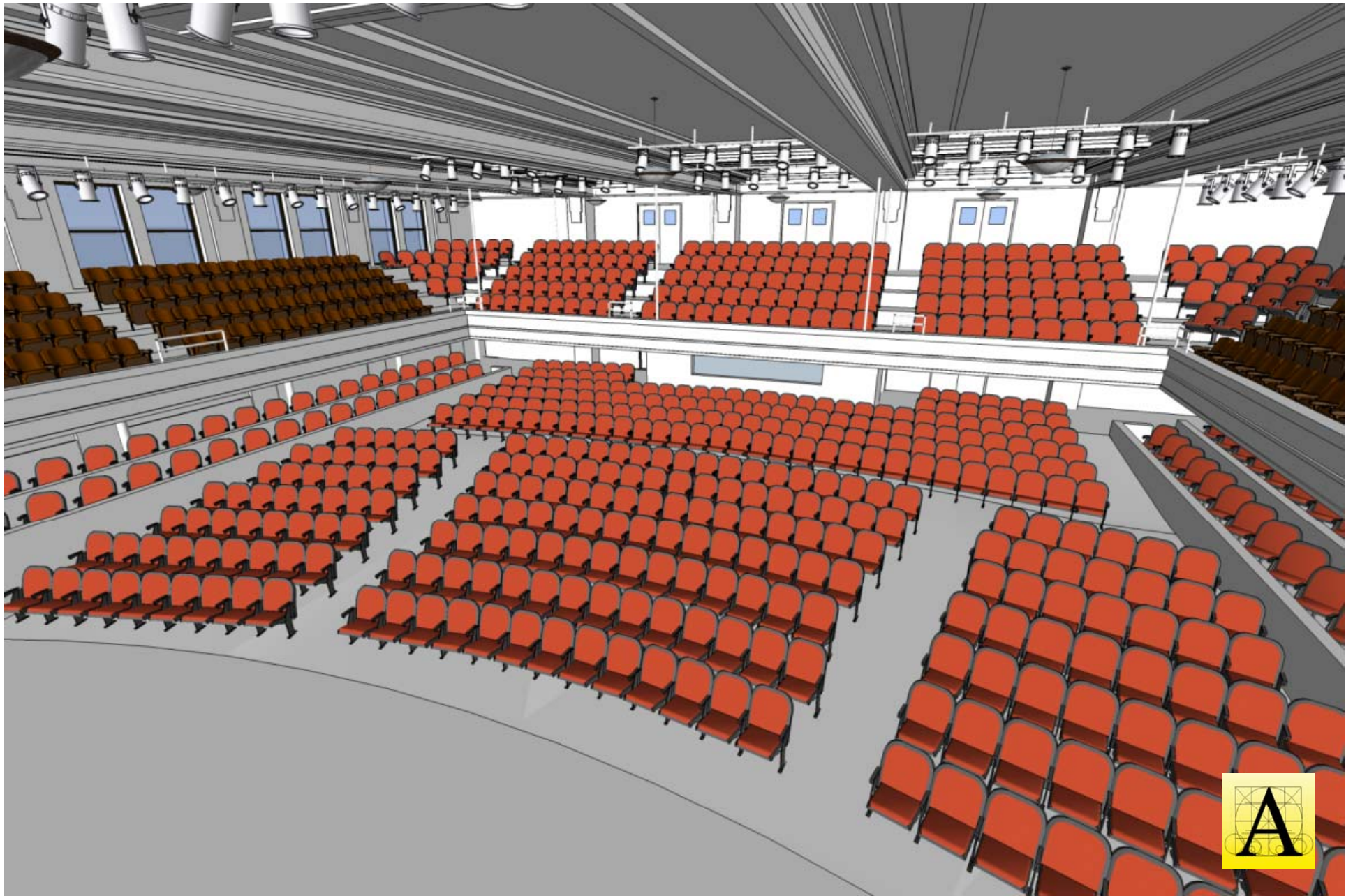
New Theatre : 7,716 sq. ft. (This Level)



















**Presented by:**  
**Dr. Ron Reed**  
**Mr. Michael Gould**

**Prepared by:**  
**Architecture Incorporated**  
**Jerit/Boys Theatre Consultants**  
**Gary Kuhl, Skyline Engineering, LLC**  
**Gary Renner, Renner & Associates, LLC**  
**Mike Albertson, Albertson Engineering, Inc.**

