

Copyright 2010. Ownership of Documents  
 This document and the ideas and designs incorporated herein, as an instrument of professional service, is the property of buffalo architecture and is not to be used in whole or part by for this or any other project without the expressed authorization of buffalo architecture.

A-203

Sheet Number

09 011

Project Number

**THIRSTY'S**  
**OUTDOOR GARDEN DINING**  
**Solution #2**

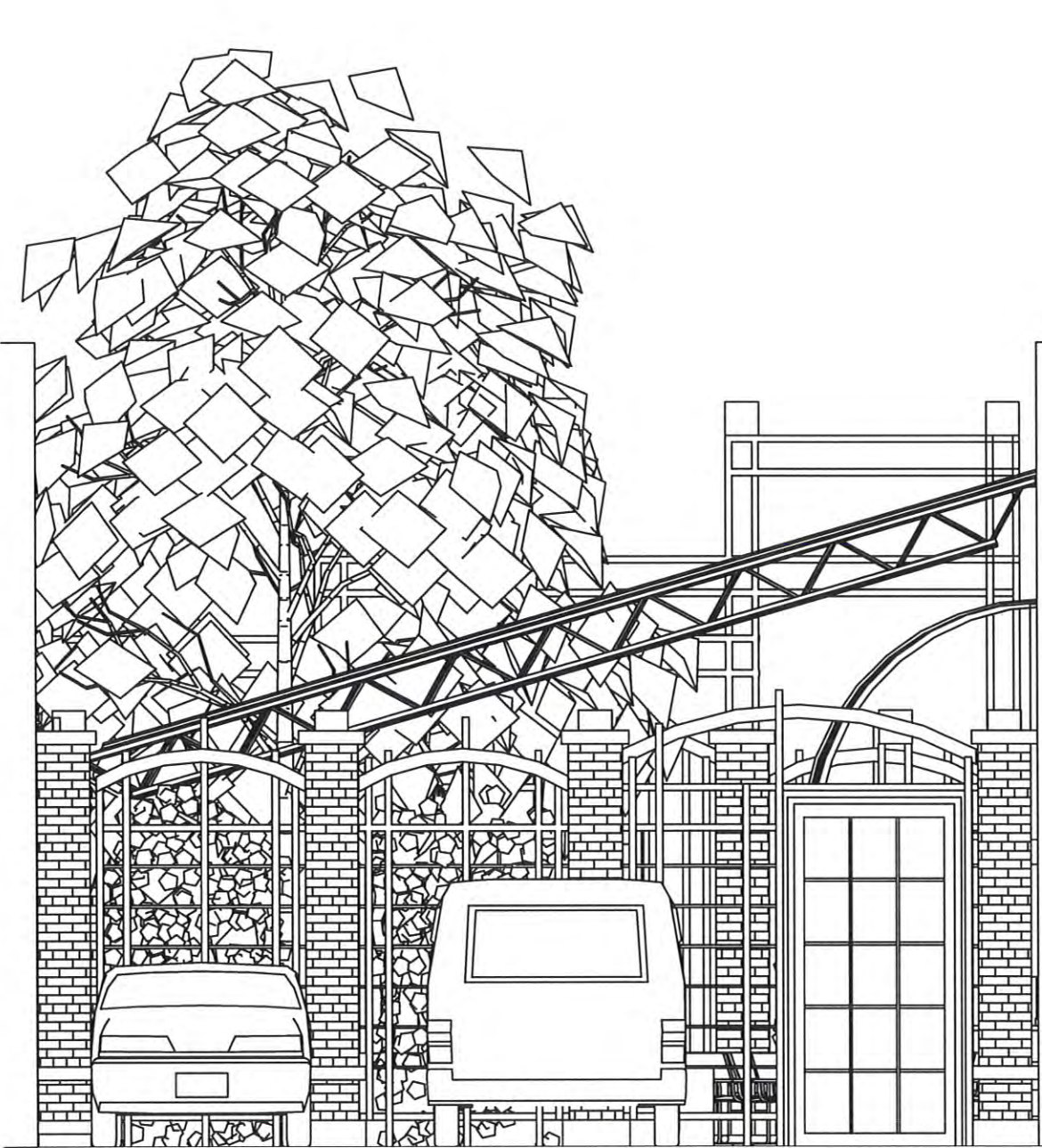
2/26/2010

RAPID CITY, SOUTH DAKOTA

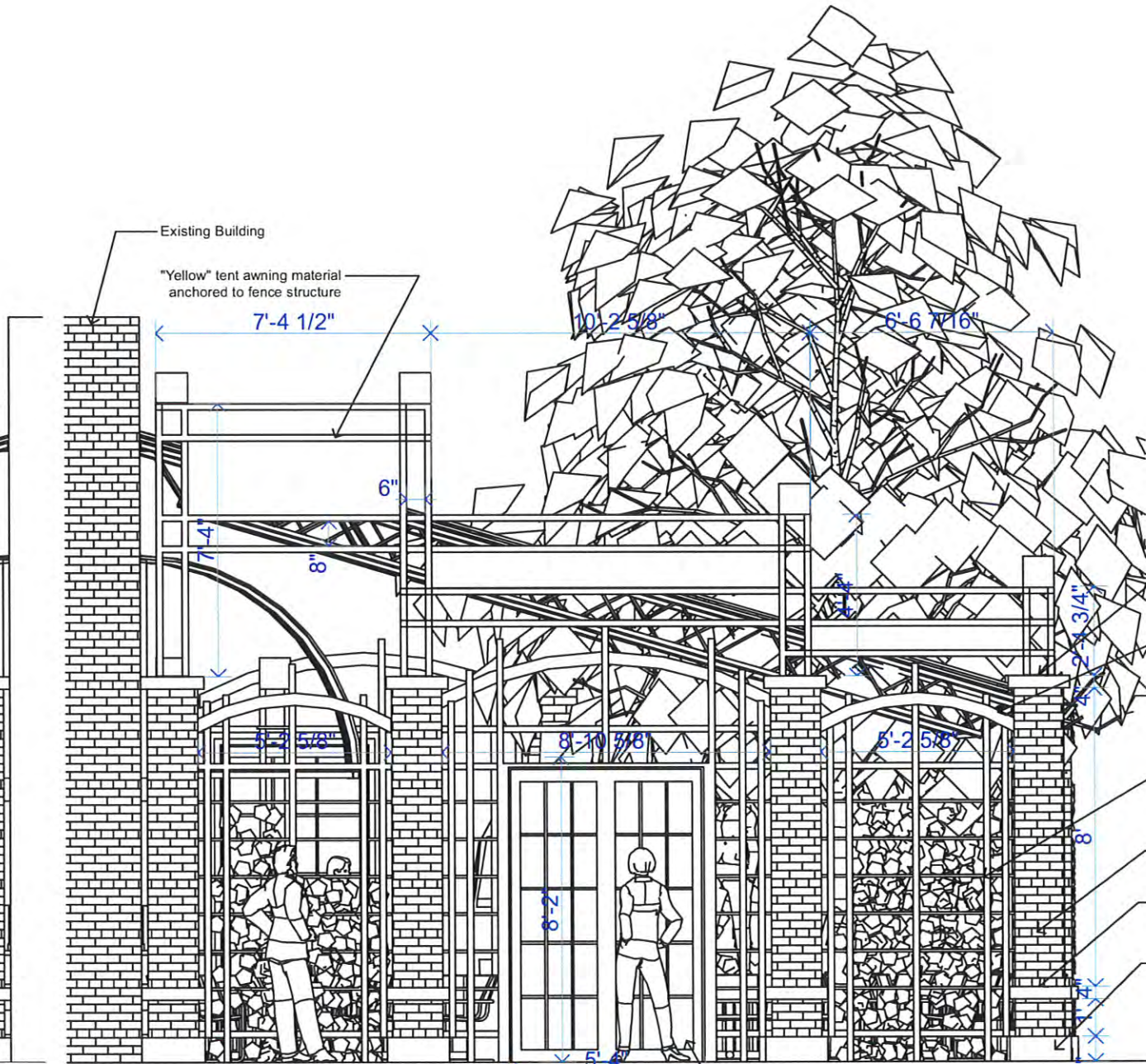
Drawn By TB  
 Checked By TB

PRELIMINARY  
 NOT FOR  
 CONSTRUCTION

*buffuto*  
 Architecture  
 art + technology equals architecture  
 In Rapid City's West Boulevard Historic District  
 425 West Boulevard, South Dakota 57701 buffuto@buffuto.com ph/fax: 605.741.7501  
 johanna zimmerman as former and my house we will serve the Lord



**2 SOUTH ELEVATION**  
**A-203 SCALE: 1/2" = 1'-0"**



**1 NORTH ELEVATION**  
**A-203 SCALE: 1/2" = 1'-0"**

- 2" Tubular steel powder coat black fence
- 1/8"x16" Square steel plate powder coat black anchored to column
- 3"x2" Tubular steel powder coat black fence top arch rail
- 4"x1'-6"x1'-6" Precast column cap
- 3/4" solid bar steel powder coat black fence
- 4" Brick veneer around 8" sq. half CMU core
- 4" Precast column wrap
- 8"x1'-6"x1'-6" Precast column base

Steel powder coat gate with steel (solid bar) grille