

Hagen Glass

Windows & Siding, Inc.

4111 Triple Crown Dr.

Rapid City, SD 57701

(605) 342-5122 (605) 342-1077 Fax

E-mail: hagenglass@yahoo.com

To: Doug or Jason

Date: 1-13-2010

RE: North Western Warehouse Window Replacement (budget numbers)

Addendums:

Hagen Glass Company is pleased to submit the following proposal:

Furnish material only or furnish and install as specified below at the quoted price(s). Materials not indicated are not included. This proposal is for immediate acceptance and is valid for 60 days from date of quote. Please review this proposal carefully as we propose to furnish only what is indicated herein subject to correction for clerical errors. Hardware supplied by others must be received complete at HGC prior to installation. Materials received incomplete may incur additional costs by others. We are not responsible for delays by strike, fires, lockouts, acts of god or other causes beyond our control.

Hagen Glass will remove existing and furnish and install the following:

Dark Bronze Anodized Finish

2 each - 38" x 55" fixed aluminum frames with 1" bronze low e insulated glass

2 each - 51" x 85" aluminum single hung windows with 3/4" bronze low e insulated glass and screens

6 each - 112-1/2" x 85" aluminum single hungs (two mulled together) with 3/4" bronze low e insulated glass and screens

2 each - 181" x 93" two bay wide fixed aluminum frame (fixed over fixed) with 1" double faced insulated panels and 1" bronze low e tempered insulated glass

For The Sum of: \$ 31,397.00

(Budget numbers)

Excluded:

Interior trim work if needed

Painting

Respectively Submitted;

Milt Wright

Commercial Sales Manager

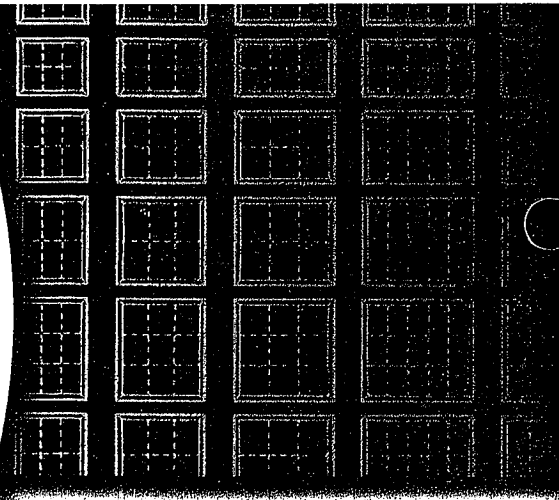
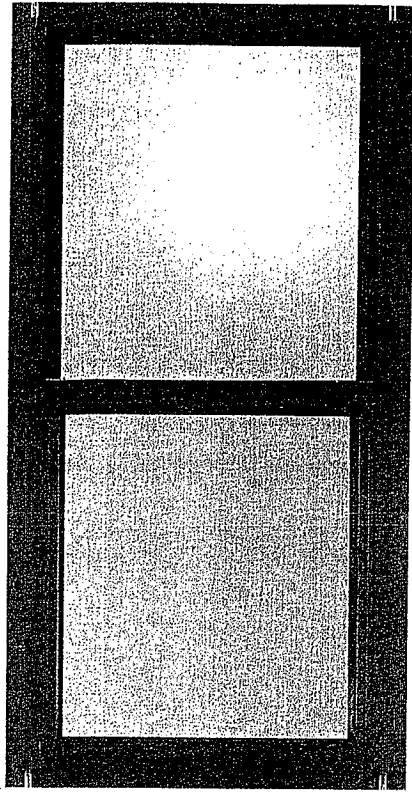
Cell 605-381-0969

Above accepted & agreed to:

Date: _____

(Your signature here makes this a contract)

"When Quality Matters"



Hagen Glass,
Windows & Siding, Inc.
4111 Triple Crown Dr.
Rapid City, SD 57701

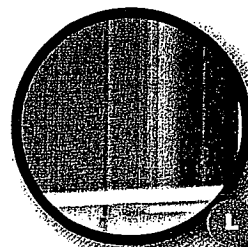
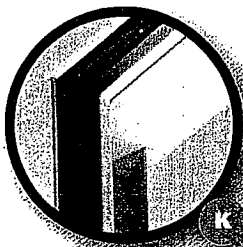
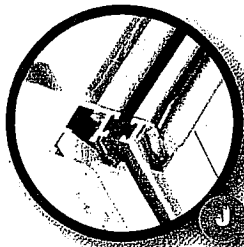
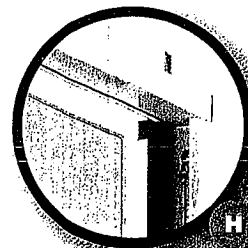
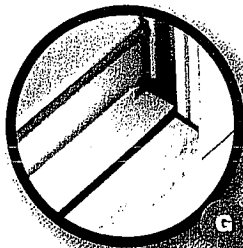
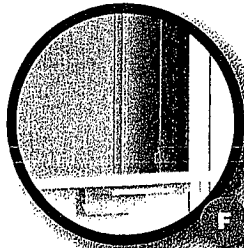
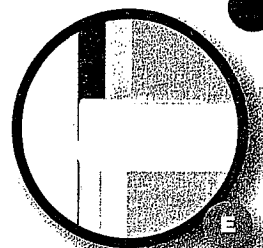
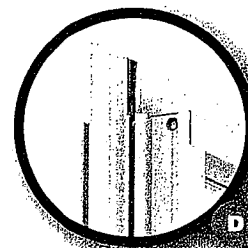
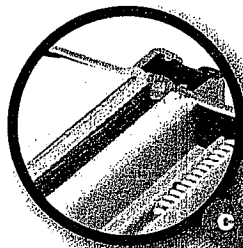
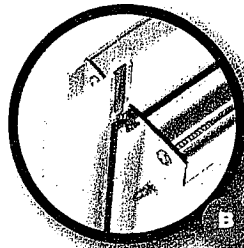
Gerkin™

WINDOWS & DOORS

Quality since 1932

Our primary focus has been to manufacture energy saving window and door products. Throughout our history we have established ourselves as an innovator in the design and manufacturing capability of insulated windows and doors.

Stringent product testing and innovative design has allowed our products to evolve as market and consumer needs change. In the winter of 1989-90 we started to conceptualize and design our Rhino Commercial Aluminum window series. Today we have several commercial window styles in the Rhino line. This window series consists of a commercial horizontal slider, casement, hopper, awning, fixed and hung windows. Each Rhino window reflects the design and manufacturing expertise we've implemented over the years. We also publish our AAMA test results to back up our claims of product performance and quality.



COMMERCIAL ALUMINUM WINDOWS



Rhino C-50

COMMERCIAL SINGLE HUNG

C-50 FEATURES

- A** AAMA C-50 rated single hung window
- B** 2 3/8" thermally broken frame depth: Gerkin uses a thermally broken frame and sash for improved thermal efficiency.
- C** Polyethylene seal pads at all sash and frame corners: Gerkin ensures a tight fit at all corners by using seal pads to seal out light, air and water.
- D** Integral nail fin: Nail fins are a standard feature for this window. The corners are closed which allows for full perimeter flashing. As an option, Gerkin will remove the nail fin for masonry or subframe installations.
- E** Easy tilt in sash: The operating sash uses attractive flush mount tilt latches for easy cleaning.
- F** Self-latching lock at sill: For safety and convenience, the operating sash locks automatically at the sill when closed. The latches are concealed from plain sight and are easily activated by lifting up on the spring-loaded latches.
- G** Sloped sill: This feature eliminates the need for weeps under the sash. Air infiltration performance is enhanced due to this feature.
- H** Smooth Block and tackle balance system: The block and tackle balance is one of the most reliable, and long lasting balances available. This balance allows for an easy operation at all operating positions.
- I** Mullion Interlock: The use of a mullion interlock helps to reduce deflection and creates a snug fit. The structure of the window is enhanced and air infiltration is reduced.
- J** Dual Weather-stripping: This window features heavy wool pile weather-stripping with a Mylar fin on two locations of the sash. A bulb seal at the sill and interlock seals make this window one of the tightest single hungs available.

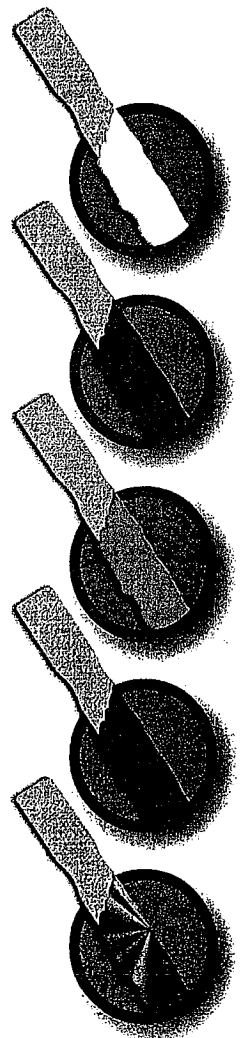
- K** 5/8" double strength glass: Gerkin insulates it's own glass and offers a ten year seal warranty as well as a one year stress crack warranty. With the use of the Swiggle warm edges spacer system Gerkin insures a long seal life and thermal efficient glass. Standard glass options are Comfort E2 Low E, bronze tint, obscure and tempered. Internal glass grills are also a standard option. Special order glass options are available.
- L** Extruded aluminum screen frames: The strength of extruded screens is a major maintenance cost advantage for Gerkin over easily damaged roll form screens.
- Standard options: Gerkin offers complete sub-frame and panning systems, snap trims, sill flashing, stacking frames, stacking "H" channel, structural mulls, mull covers and factory applied extension jambs.
- Other options: Gerkin offers insulated panels as well as a louver system with a blank-off panel for PTAC units. This unit can be incorporated into our Rhino window system and used in conjunction with any Rhino window.

ONLINE INFORMATION

Our website at www.gerkin.com offers AutoCAD details of window drawings and written specifications for architectural use. The Gerkin estimating department offers quoting and shop drawing services. Distributor catalogs are also available for over the counter quoting and architectural detail referral.

COLORS

Four standard colors: Gerkin stocks organic painted finishes in white and bronze as well as anodic finishes of clear anodized and dark bronze anodized. Custom paint and anodized finishes are available.

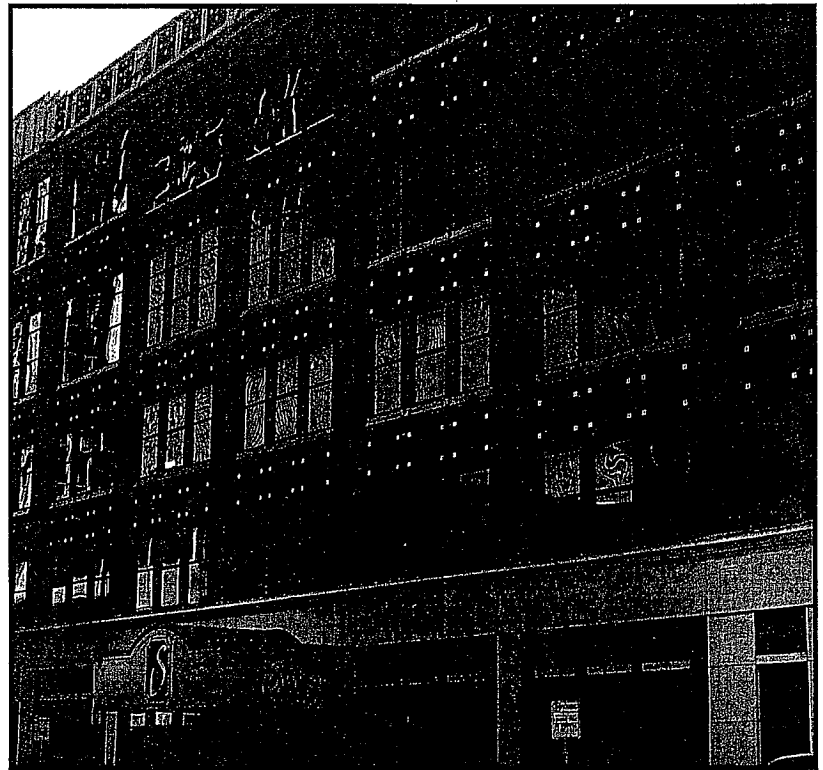
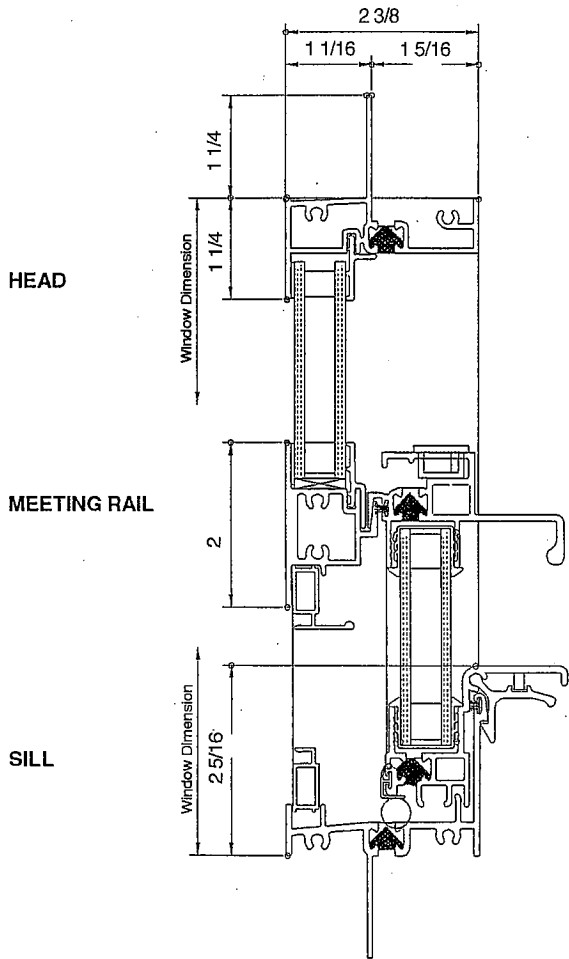


Hagen Glass,
Windows & Siding, Inc.
4111 Triple Crown Dr.
Rapid City, SD 57701



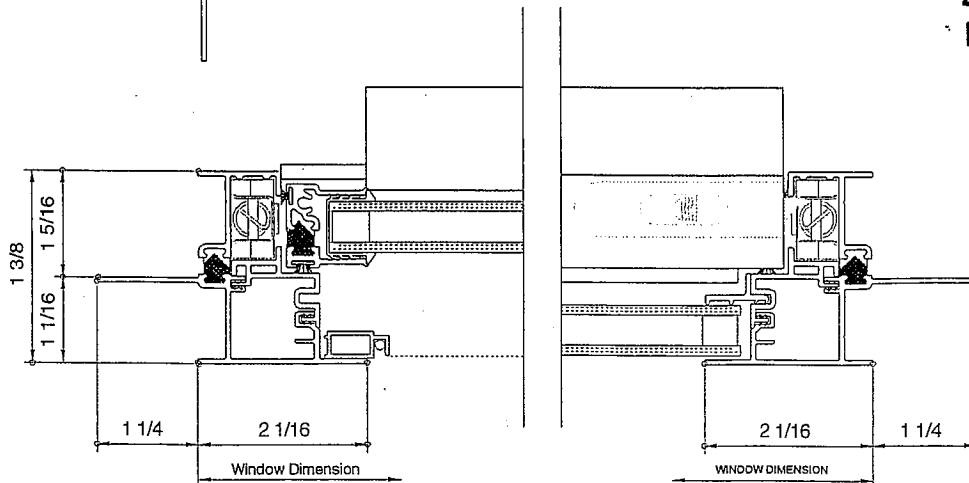
5900 SERIES

C-50 HORIZONTAL & VERTICAL DETAILS



C-50 Single Hung Windows

**Hagen Glass,
Windows & Siding, Inc.**
4111 Triple Crown Dr.
Rapid City, SD 57701



JAMB AT SASH

JAMB AT FIXED

COMMERCIAL ALUMINUM WINDOWS



Rhino C-50

COMMERCIAL SINGLE HUNG

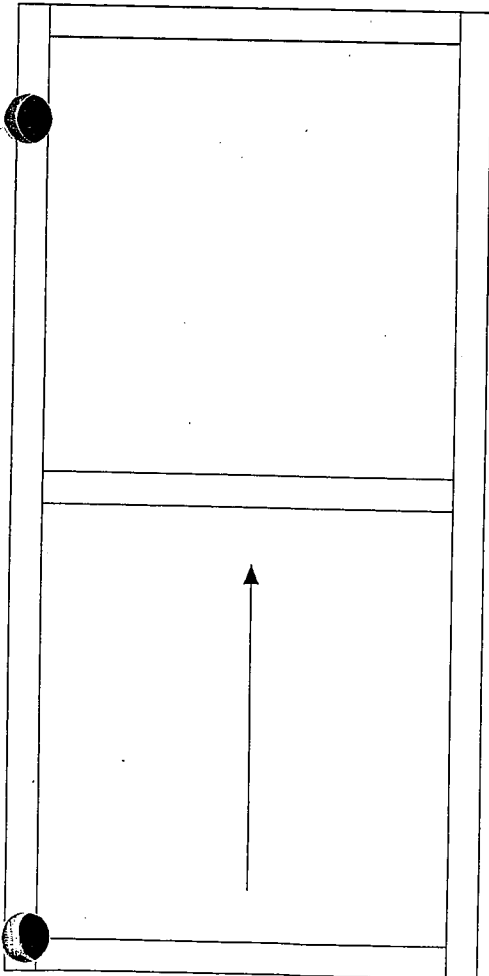
5900 SERIES

AAMA TEST RESULTS

MODEL	CLASS	TEST SIZE	AIR INFILTRATION (cfm/sq.ft.)	WATER (pcf)	STRUCTURAL WIND LOAD (psf)	U-VALUE	CONDENSATION RESISTANCE FACTOR	SOUND TRANSMISSION GLASS
5900	SH-C50	54 X 90	.06	50	75.0	50	FRAME 57 GLASS 66	STC 31 DITC 28 W/T 41/42/43/44/45/46/47/48/49

TESTED AND CERTIFIED TO AAMA/NWWDA 101/I.S.2-97

STANDARD SINGLE HUNG OPTIONS



Hagen Glass,
Windows & Siding, Inc.
4111 Triple Crown Dr.
Rapid City, SD 57701

GerkinTM

WINDOWS & DOORS

P.O. BOX 3203

SIOUX CITY, IA 51102

PHONE: 402.494.6000

FAX: 402.494.6765

TOLL FREE: 800.475.5061