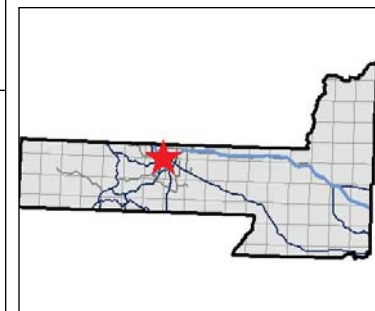
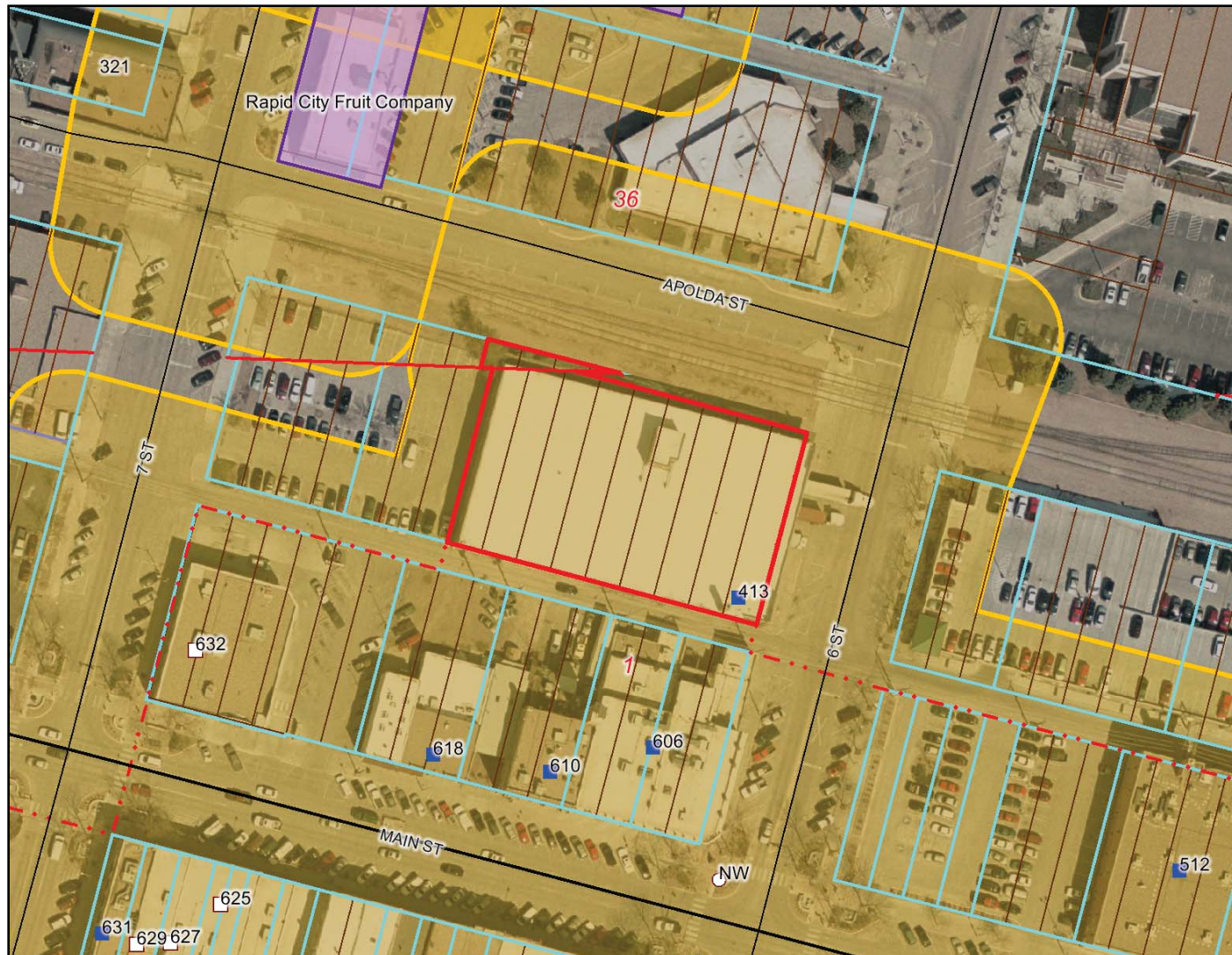


413 6th Street



Legend

Historic Structures

- CONTRIBUTING BUILDING
- CONTRIBUTING GARAGE
- CONTRIBUTING SHED
- NON-CONTRIBUTING BUILDING
- NON-CONTRIBUTING GARAGE
- NON-CONTRIBUTING SHED
- NON-CONTRIBUTING STATUE

Roads

- ⚡ Not classified
- ⚡ Interstate
- ⚡ US Highway
- ⚡ SD Highway
- ⚡ County Highway
- ⚡ Main Road
- ⚡ Minor Arterial
- ⚡ Collector
- ⚡ Ramp
- ⚡ Paved Road
- ⚡ Unpaved Road
- ⚡ Unimproved Road
- ⚡ Trail
- ⚡ other
- ⚡ Not yet coded

Historic District Boundary

Historic Properties

Township/Section lines

- ⚡ SECTION
- ⚡ TOWNSHIP
- Parcel Boundary
- Lot Lines
- ⚡ COUNTY
- ⚡ LOT LINE
- ⚡ PARCEL LINE
- ⚡ ROAD ROW

0 140 280 420 ft.

Map center: 44° 4' 55.0" N, 103° 13' 38.4" W



Scale: 1:1,435

DISCLAIMER: This map is provided 'as is' without warranty of any representation of accuracy, timeliness, or completeness. The burden for determining accuracy, completeness, timeliness, merchantability, and fitness for or the appropriateness for use rests solely on the user. Rapid City and Pennington County make no warranties, express or implied, as to the use of the map. There are no implied warranties of merchantability or fitness for a particular purpose. The user acknowledges and accepts the limitations of the map, including the fact that the data used to create the map is dynamic and is in a constant state of maintenance, correction, and update. This document does not represent a legal survey of the land. There are no restrictions on the distribution of printed Rapid City/Pennington County maps, other than the City of Rapid City copyright/credit notice must be legible on the print. The user agrees to recognize and honor in perpetuity the copyrights and other proprietary claims for the map(s) established or produced by the City of Rapid City or the vendors furnishing said items to the City of Rapid City.

Notes: 10CM009 - Downtown - Contributing