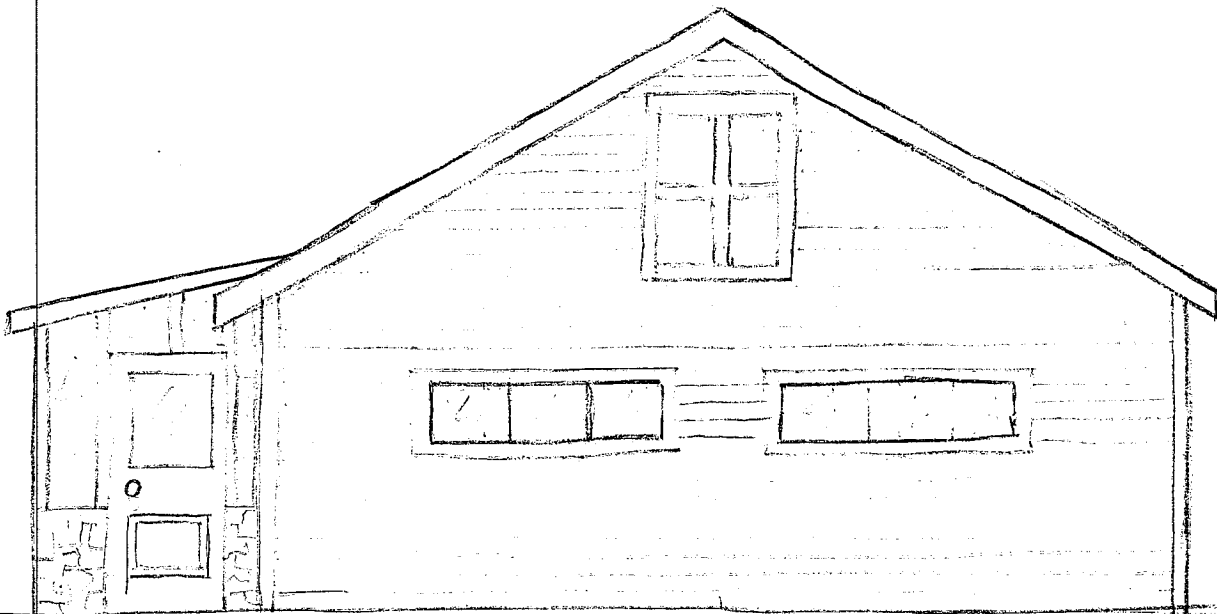


FRONT ELEVATION  
(NORTH FACING)

913 FAIRVIEW  
RAPID CITY, SD 57701



6'-0"

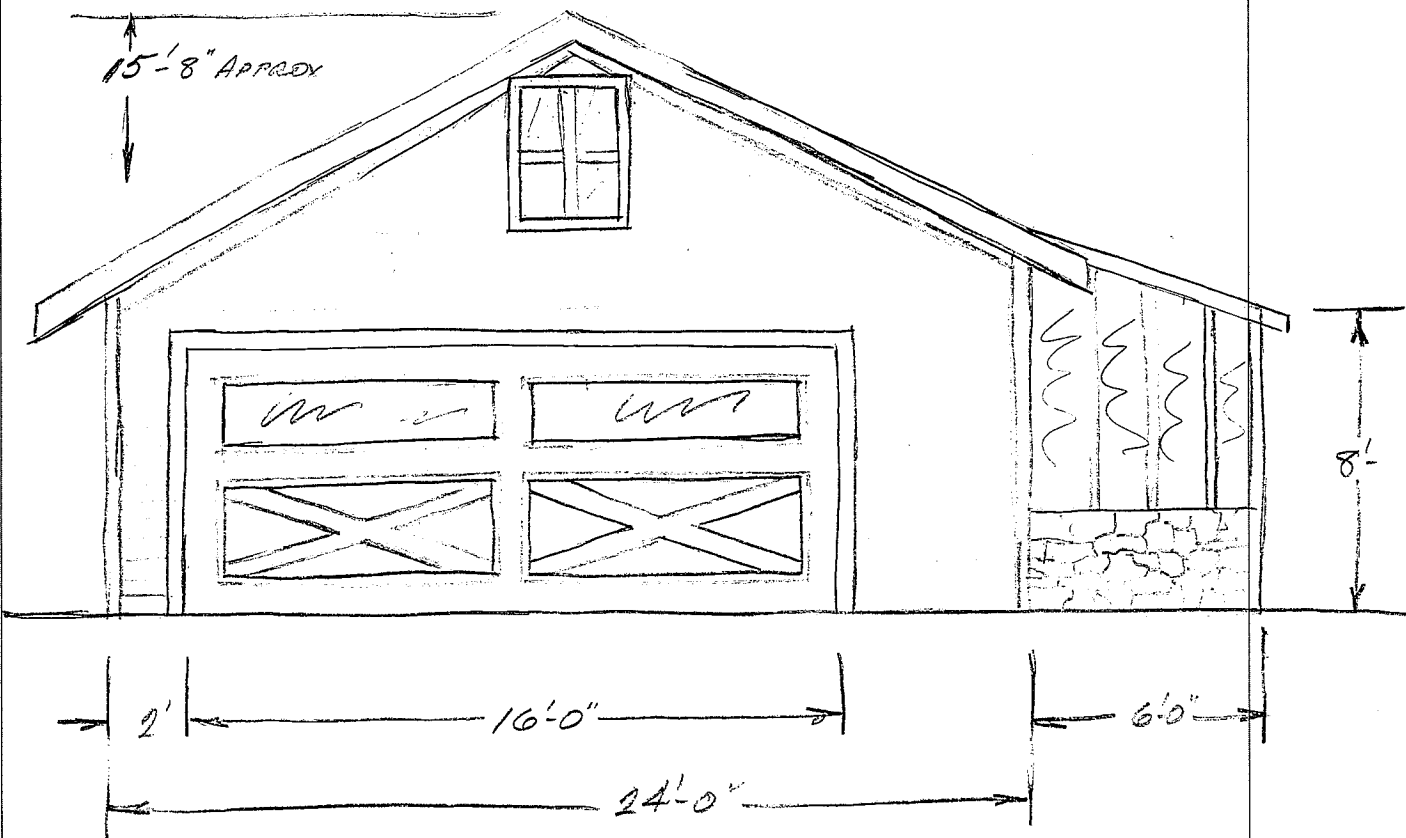
24'-0"

1/4" = 1'

Jim Green  
4-8-09

BACK ELEVATION  
(SOUTH FACED)

913 FAIRVIEW  
RAPID CITY SD 57701



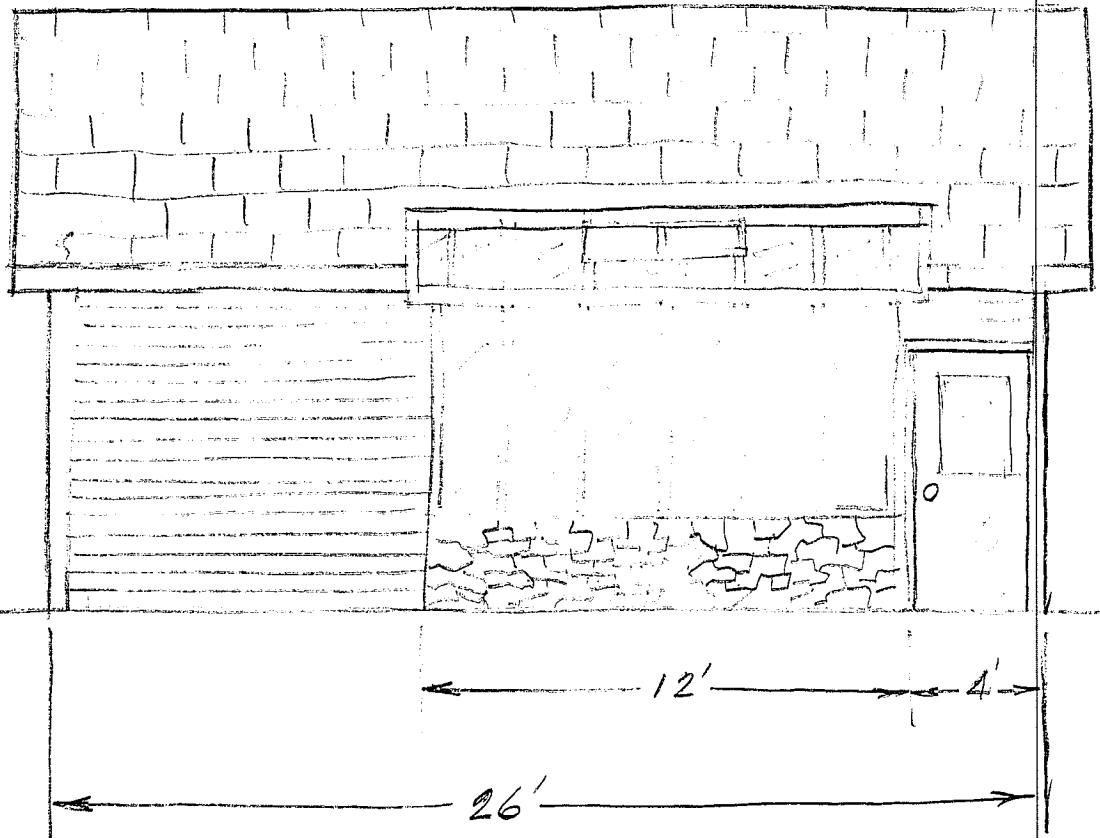
1/4" = 1'

Jim GREEN

4-8-09

# EAST ELEVATION

913 FAIRVIEW  
RAPID CITY SD 57321



$\frac{1}{4}'' = 1'$

Jim Green  
4-8-09