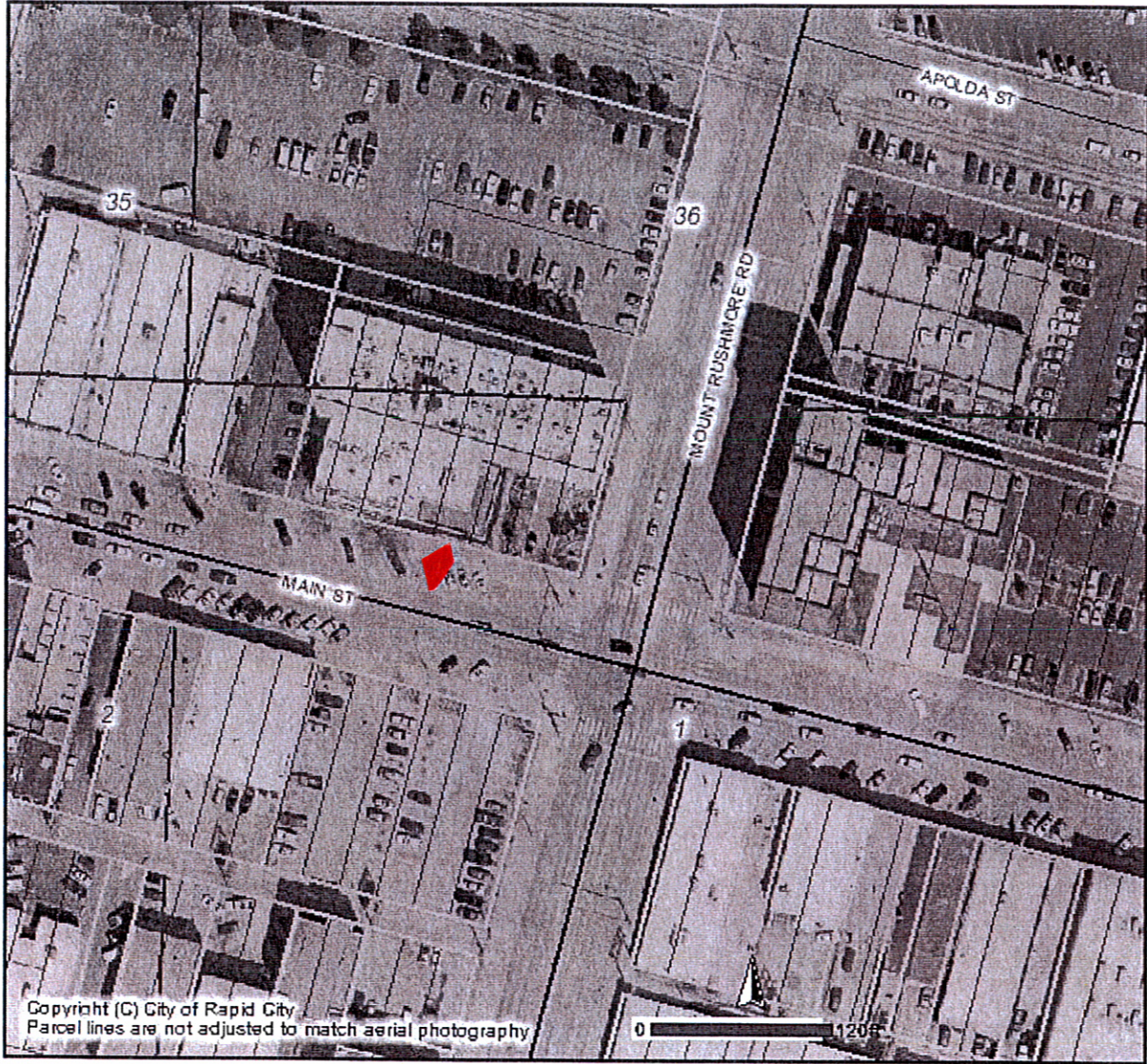


Main and Mt. Rushmore

Print Close



80' W. OF WEST SIDEWALK LINE ALONG 8TH
 2' N. OF CURB

SOUTH - IN FRONT OF RADISSON

ADJACENT TO: LOT 33-35, BLK 72
 ORIGINAL TOWN OF RAPID CITY
 SEC 1, T1N, R7E,
 BHM, RAPID CITY, PENNINGTON CO.